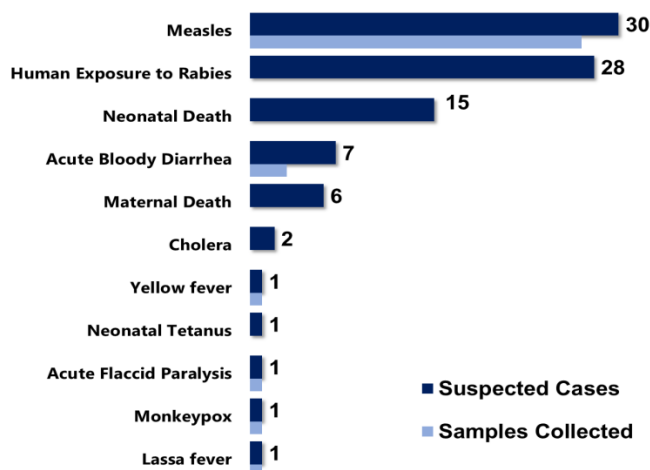


## Highlights

**Figure 1: Public Health Events reported during this week**



## Keynotes and Events of Public Health Significance

- ◆ **A total of 93** events of public health importance including **23** deaths were reported
- ◆ **Completeness and timeliness** of health facility reports were both 98%
- ◆ **Ongoing Measles outbreaks** in Rivercess and Grand Gedeh Counties
- ◆ **New measles** outbreak in River-Gee

## Reporting Coverage

**Table 1. Health Facility Weekly IDSR Reporting Coverage, Liberia, Epi week 31, 2019**

| County           | Number of Expected Report | Number of Reports Received | Number Received on Time | Completeness (%) | Timeliness (%) |
|------------------|---------------------------|----------------------------|-------------------------|------------------|----------------|
| Bomi             | 26                        | 26                         | 26                      | 100              | 100            |
| Bong             | 57                        | 57                         | 57                      | 100              | 100            |
| Gbarpolu         | 16                        | 16                         | 16                      | 100              | 100            |
| Grand Bassa      | 34                        | 34                         | 34                      | 100              | 100            |
| Grand Cape Mount | 34                        | 34                         | 34                      | 100              | 100            |
| Grand Gedeh      | 24                        | 24                         | 24                      | 100              | 100            |
| Grand Kru        | 19                        | 19                         | 19                      | 100              | 100            |
| Lofa             | 59                        | 59                         | 59                      | 100              | 100            |
| Margibi          | 59                        | 59                         | 59                      | 100              | 100            |
| Maryland         | 26                        | 26                         | 26                      | 100              | 100            |
| Montserrado      | 347                       | 332                        | 332                     | 96               | 96             |
| Nimba            | 84                        | 83                         | 83                      | 99               | 99             |
| Rivercess        | 20                        | 20                         | 20                      | 100              | 100            |
| River Gee        | 20                        | 20                         | 20                      | 100              | 100            |
| Sinoe            | 37                        | 37                         | 37                      | 100              | 100            |
| <b>Liberia</b>   | <b>862</b>                | <b>846</b>                 | <b>846</b>              | <b>98</b>        | <b>98</b>      |

**846(98%)**  
Health facilities reported IDSR data

**91(98%)**  
Health districts reported IDSR data

**846 (98%)**  
Health facilities out of 862 reported timely IDSR data

**Legend:** ≥80 <80

- ◆ The national target for weekly IDSR reporting is 80%
- ◆ Health facility timeliness is monitored at County level
- ◆ Montserrado and Grand Cape Mount counties submitted their weekly IDSR report late to the national level

## Vaccine Preventable Diseases

### Measles

- ◆ Thirty (30) suspected cases were reported from River Gee (10), Grand Kru (5), Bomi (4), Grand Bassa (2), Nimba (2), Rivercess (2) Sinoe (2), Bong (1), Margibi (1) and Montserrado (1), Counties
  - Twenty -seven (27) specimens were collected and 24 tested
  - Positive 16, Negative (6) and Equivocal (2)
- ◆ Vaccination status among suspected cases:
  - Vaccinated 11 (37%), not vaccinated 4 (13.3%) and unknown 15 (50%)
- ◆ Age distribution among suspected cases:
  - <1 year: 2 (6.7%), 1 – 4 years: 8 (26.6%), ≥5 years: 20 (66.7%)
- ◆ Cumulatively, since Epi-week one, 1240 suspected cases have been recorded; Of these, 480 have been tested by the laboratory and results showed 146 positive, 323 negative and 11 indeterminate
- ◆ Epi-classification is as follows: 904 (72.9%) confirmed (146 lab confirmed, 676 clinically confirmed, 82 epi-linked), 323 (26%) negative, 11 (0.9%) indeterminate, and 2 (0.2%) pending (*See Table 2, Figure 2*)
  - Cumulative vaccination status among lab confirmed: 46 (32%) vaccinated, 41 (28%) not vaccinated, 59 (40%) unknown
  - Age distribution among lab confirmed: <1 year: 11 (7.5%), 1 – 4 years: 17 (11.6%), ≥5 years: 118 (80.8%)
  - Of the 323 specimens tested negative for measles, 229 specimens were tested for rubella, as follows: 102 positive, 118 negative, and 9 indeterminate

### Public Health Action

- ◆ Case Management, active case search, health education, and community engagement are ongoing in affected districts and communities

**Table 2. Annualized Non-Measles Febrile Rash Illness Rate by Counties, Liberia, Epi-week 1 - 31, 2019**

| Reporting County | Epi-classification |            |                      |                           |                      |          | Total       | Annualized Non-Measles Febrile Rash Illness Rate |
|------------------|--------------------|------------|----------------------|---------------------------|----------------------|----------|-------------|--|
|                  | Lab confirmed      | Epi-linked | Clinically confirmed | Indeterminate (Equivocal) | Discarded (Negative) | Pending  |             |  |
| Bomi             | 3                  | 0          | 12                   | 1                         | 11                   | 2        | 29          | 17.5   |
| Bong             | 13                 | 0          | 33                   | 1                         | 16                   | 0        | 63          | 6.1  |
| Gbarpolu         | 5                  | 21         | 54                   | 0                         | 6                    | 0        | 86          | 9.6  |
| Grand Bassa      | 3                  | 2          | 49                   | 2                         | 18                   | 0        | 74          | 10.8   |
| Grand Cape Mount | 1                  | 0          | 7                    | 0                         | 11                   | 0        | 19          | 11.6   |
| Grand Gedeh      | 21                 | 14         | 18                   | 0                         | 16                   | 0        | 69          | 17.0   |
| Grand Kru        | 17                 | 20         | 36                   | 1                         | 14                   | 0        | 88          | 32.3   |
| Lofa             | 7                  | 0          | 85                   | 0                         | 18                   | 0        | 110         | 8.7  |
| Margibi          | 10                 | 0          | 36                   | 2                         | 33                   | 0        | 81          | 21.0   |
| Maryland         | 0                  | 0          | 0                    | 0                         | 1                    | 0        | 1           | 1.0  |
| Montserrado      | 13                 | 4          | 84                   | 1                         | 77                   | 0        | 179         | 8.9  |
| Nimba            | 9                  | 10         | 40                   | 1                         | 28                   | 0        | 88          | 8.1  |
| River Gee        | 28                 | 0          | 60                   | 0                         | 29                   | 0        | 117         | 57.9   |
| Rivercess        | 10                 | 11         | 49                   | 1                         | 37                   | 0        | 108         | 69.1   |
| Sinoe            | 6                  | 0          | 113                  | 1                         | 8                    | 0        | 128         | 10.4   |
| <b>Liberia</b>   | <b>146</b>         | <b>82</b>  | <b>676</b>           | <b>11</b>                 | <b>323</b>           | <b>2</b> | <b>1240</b> | <b>12.2</b>                                      |
| Target Achieved  | ≥2                 |            | Below Target         |                           | <2                   |          |             |  |

Figure 2. Cumulative Epi-classification Measles Cases by Reporting weeks, Liberia, Epi-week 1 - 31, 2019

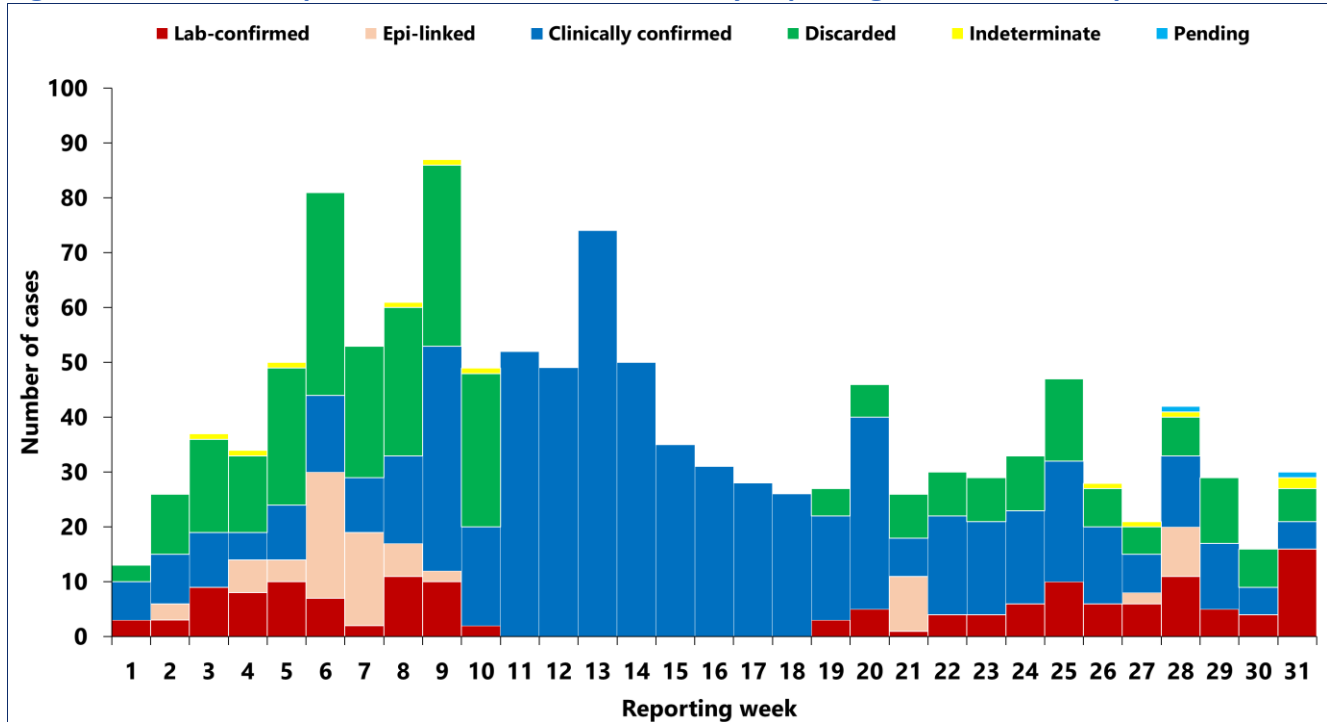
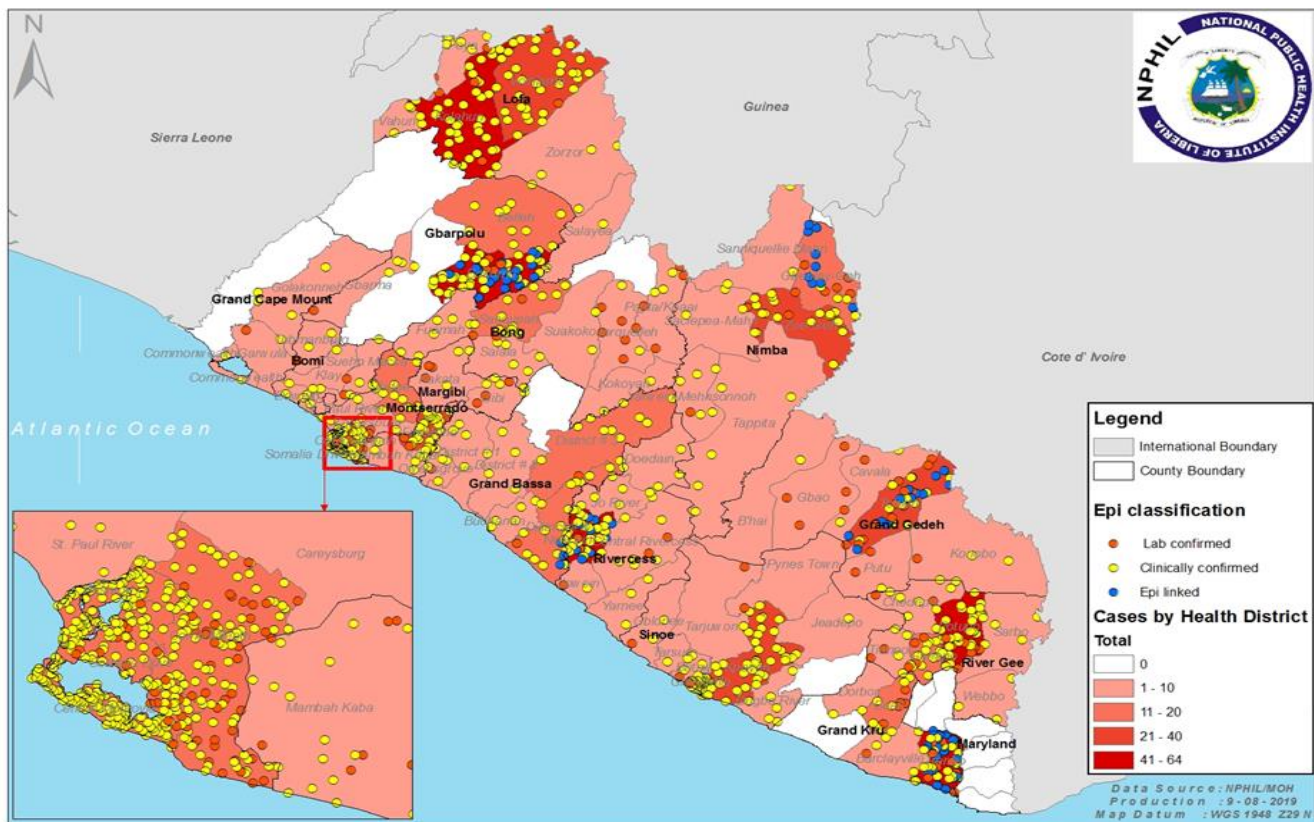


Figure 3. Cumulative Confirmed Measles Cases Reported by Health District, Liberia, Epi-week 1 - 31, 2019



## Acute Flaccid Paralysis (Suspected Polio)

- ◆ One case\* was reported from Montserrado County
- ◆ Specimen was collected and pending shipment
- ◆ Cumulatively, since Epi week one, 40 cases have been recorded:
  - Proportion of cases reported with sample collected and tested is 98%
  - Laboratory confirmed (+) zero

**NB: Case was detected through the Auto –Visual AFP Detection and Reporting (AVADAR) platform**

## Neonatal Tetanus

- ◆ One case was reported from Nimba
- ◆ Cumulatively, since Epi-week one, 22 clinically diagnosed cases have been recorded:
  - Attributable death 27% (n=6)

## Viral Hemorrhagic Diseases

### Ebola Virus Disease (EVD)

- ◆ Zero alert was reported
- ◆ Cumulatively, since Epi-week one, 13 EVD alerts have been recorded and all tested negative

### Lassa fever

- ◆ One suspected case was reported from Bong County
  - Specimen was collected and pending laboratory confirmation
- ◆ Cumulatively, since Epi week one, 81 suspected cases have been recorded:
  - Proportion of suspected cases reported with sample collected is 98% (n=79)
  - Laboratory confirmed 28.2% (n=22)
  - Case fatality in confirmed cases is 36% (n=8)
  - Epi-classification is as follows: 22 positive, 39 negative, 14 pending laboratory confirmation and 6 suspected

### Yellow fever

- ◆ One (1) suspected case was reported from Grand Gedeh County
- ◆ Specimen was collected and tested negative
- ◆ Cumulatively, since Epi-week one, 71 suspected cases have been recorded:
  - Zero laboratory confirmed
  - Proportion of suspected cases reported with sample tested is 82% (n=58)
  - Zero attributable death

### Monkeypox

- ◆ One suspected case was reported from Lofa
- ◆ Specimen was collected pending verification for shipment
- ◆ Cumulatively, since Epi week one, 52 suspected cases have been reported and 12 specimens have been shipped to Atlanta for confirmation

### Meningitis

- ◆ Zero suspected case was reported
- ◆ Cumulatively, since Epi-week one, 39 suspected cases have been recorded.
  - 35 tested negative
  - 4 specimens were not collected from Gbarpolu (3), and Lofa (1) Counties

## Events of Public Health Importance

### Maternal Mortality

- ◆ Six (6) deaths were reported from Bong (2) and one each from Bomi, Margibi, Maryland and Sinoe Counties
- ◆ Causes of death: Postpartum Hemorrhage (2), anemia (2), and Sepsis (2)
- ◆ Reporting sites: health facilities 6 (100%)
- ◆ Cumulatively, since Epi-week one, 178 maternal deaths have been recorded and the major attributable causes are: postpartum hemorrhage 85 (47.8%), eclampsia 24 (14%), and anemia 16 (9%) (See Table 3)

**Table 3. Annualized and Cumulative Maternal Death Reported by County, Liberia, Epi-week 1 - 31, 2019**

| County                    | Estimated Annual Live birth (4.3%) | Current week | Cumulative | % of Cumulative Maternal deaths | Annualized Maternal Mortality Ratio/100,000 |
|---------------------------|------------------------------------|--------------|------------|---------------------------------|---|
| Maryland                  | 7347                               | 1            | 12         | 7                               | 274   |
| Grand Gedeh               | 6770                               | 0            | 10         | 6                               | 248   |
| Bong                      | 18775                              | 2            | 27         | 15                              | 241   |
| Margibi                   | 11345                              | 1            | 14         | 8                               | 207   |
| Rivercess                 | 3865                               | 0            | 4          | 2                               | 174   |
| Nimba                     | 24970                              | 0            | 25         | 14                              | 168   |
| Sinoe                     | 5534                               | 1            | 5          | 3                               | 152   |
| Gbarpolu                  | 4507                               | 0            | 4          | 2                               | 149   |
| Montserrado               | 62479                              | 0            | 52         | 29                              | 140   |
| Grand Cape Mount          | 6868                               | 0            | 5          | 3                               | 122   |
| Grand Bassa               | 11981                              | 0            | 8          | 4                               | 112   |
| Bomi                      | 4546                               | 1            | 3          | 2                               | 111   |
| Grand Kru                 | 3130                               | 0            | 2          | 1                               | 107   |
| River Gee                 | 3610                               | 0            | 2          | 1                               | 93  |
| Lofa                      | 14911                              | 0            | 5          | 3                               | 56  |
| <b>Liberia (National)</b> | <b>190636</b>                      | <b>6</b>     | <b>178</b> | <b>100</b>                      | <b>157</b>                                  |

### Neonatal Mortality

- ◆ Fifteen (15) deaths were reported from Bong (3), Montserrado (4), Maryland (3), Nimba (2), and one each from Grand Bassa, Grand Kru (1) and Margibi Counties
- ◆ Causes of deaths: Asphyxia (11) Sepsis (3), and Preterm (1)
- ◆ Reporting sites: health facilities 11 (73.3%) communities 4 (26.6%)
- ◆ Cumulatively, since Epi-week one, 453 neonatal deaths have been reported (See Table 4) and the major attributable causes are: asphyxia 228 (50.3%), sepsis 159 (35.1%) and preterm 41 (9%)

**Table 4. Annualized and Cumulative Neonatal Death Reported by County, Liberia, Epi-week 1 – 31, 2019**

| County                    | Estimated Annual Live birth (4.3%) | Current Week | Cumulative | % of Cumulative Neonatal deaths | Annualized Neonatal Mortality Rate/1000 |
|---------------------------|------------------------------------|--------------|------------|---------------------------------|---|
| Grand Kru                 | 3130                               | 1            | 26         | 6                               | 13.9                                    |
| Grand Gedeh               | 6770                               | 0            | 28         | 6                               | 6.9                                     |
| Maryland                  | 7347                               | 3            | 24         | 5                               | 5.5                                     |
| Montserrado               | 62479                              | 4            | 193        | 43                              | 5.2                                     |
| Margibi                   | 11345                              | 1            | 33         | 7                               | 4.9                                     |
| Bong                      | 18775                              | 3            | 53         | 12                              | 4.7                                     |
| Rivercess                 | 3865                               | 0            | 10         | 2                               | 4.3                                     |
| Gbarpolu                  | 4507                               | 0            | 10         | 2                               | 3.7                                     |
| River Gee                 | 3610                               | 0            | 7          | 2                               | 3.3                                     |
| Sinoe                     | 5534                               | 0            | 9          | 2                               | 2.7                                     |
| Bomi                      | 4546                               | 0            | 6          | 1                               | 2.2                                     |
| Lofa                      | 14911                              | 0            | 19         | 4                               | 2.1                                     |
| Nimba                     | 24970                              | 2            | 27         | 6                               | 1.8                                     |
| Grand Bassa               | 11981                              | 1            | 4          | 1                               | 0.6                                     |
| Grand Cape Mount          | 6868                               | 0            | 2          | 0                               | 0.5                                     |
| <b>Liberia (National)</b> | <b>190636</b>                      | <b>15</b>    | <b>451</b> | <b>100</b>                      | <b>4.0</b>                              |

## Other Reportable Diseases

### Animal Bites (Human Exposure to Rabies)

- ◆ Twenty-eight (28) cases were reported from Montserrado (5), Nimba (5), Maryland (5), Margibi (3), Bong (2), Lofa (2), Grand Gedeh (2), Grand Kru (2), one each from Grand Bassa and Gbarpolu Counties
- ◆ Cumulatively, since Epi-week one, 1097 cases of animal bites have been recorded including Seven attributable deaths

### Acute Bloody Diarrhea (Suspected Shigellosis)

- ◆ Seven (7) cases were reported from Sinoe (4), one each from Grand Gedeh, Grand Bassa, and Margibi Counties
  - Three (3) specimens were collected and pending arrival at the lab
- ◆ Cumulatively, since Epi-week one, 182 acute bloody diarrhea cases have been recorded with 125 stool specimens collected and 84 tested. Result: 12 positive and 72 negative

### Severe Watery Diarrhea (Cholera)

- ◆ Two suspected cases were reported from Maryland and River Gee Counties
  - Specimen was collected pending arrival at the lab
- ◆ Cumulatively, since Epi-week one, 85 suspected cases have been recorded with 66 specimens collected out of which; 50 negative and 0 positive

### Unexplained Cluster of Health Events

- ◆ Zero case reported
- ◆ Cumulatively, since Epi-week one, 11 cases of unexplained death has been reported

## Points of Entry

- ◆ Zero IDSR alert detected and verified
- ◆ A total of 5096 travelers were recorded for the week (See Table 5)

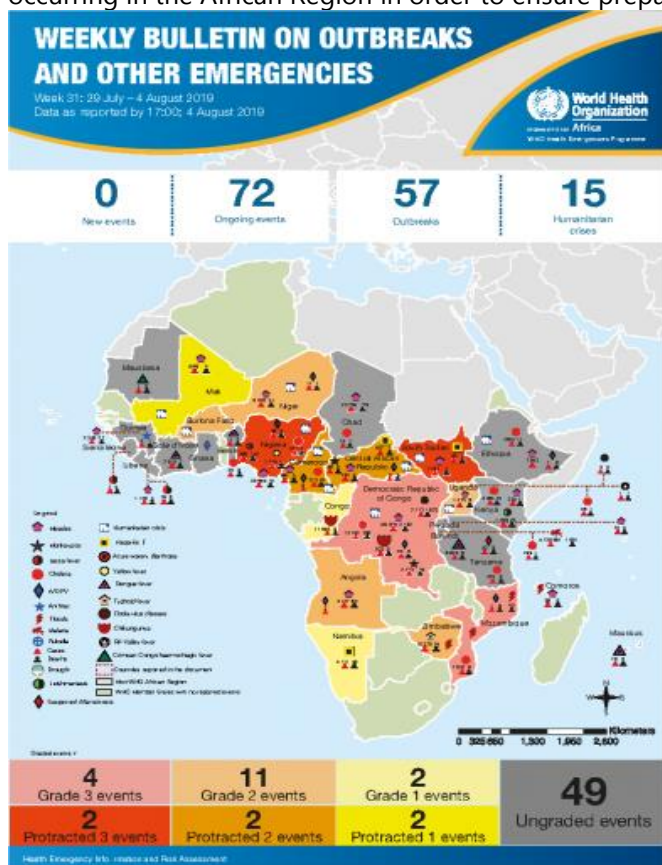
**Table 5. Total Travelers, IDSR Alerts Detected and Verified at Points of Entry, Liberia, Epi-week 31, 2019**

| Type of Ports                      | Point of Entry               | Weekly total | Arrival     | Departure   | Yellow Book Issued | Yellow Book Damage/Card Replaced | Travelers Vaccinated | IDSR Alerts | Alerts Verified |
|------------------------------------|------------------------------|--------------|-------------|-------------|--------------------|----------------------------------|----------------------|-------------|-----------------|
| <b>Airport</b>                     | James S. Paynes              | 58           | 33          | 25          | 0                  | 0                                | 0                    | 0           | 0               |
| <b>Seaport</b>                     | Robert International Airport | 3626         | 1477        | 2149        | 55                 | 46                               | 9                    | 0           | 0               |
|                                    | Freeport of Monrovia         | 158          | 79          | 79          | 0                  | 0                                | 0                    | 0           | 0               |
|                                    | Buchanan Port                | 84           | 42          | 42          | 0                  | 0                                | 0                    | 0           | 0               |
| <b>Ground Crossing</b>             | Bo Water Side                | 466          | 162         | 304         | 15                 | 15                               | 0                    | 0           | 0               |
|                                    | Ganta                        | 540          | 240         | 300         | 30                 | 30                               | 0                    | 0           | 0               |
|                                    | Yekepa                       | 83           | 45          | 38          | 0                  | 0                                | 0                    | 0           | 0               |
|                                    | Loguatu                      | 81           | 40          | 41          | 0                  | 0                                | 0                    | 0           | 0               |
| <b>Total Traveler for the Week</b> |                              | <b>5096</b>  | <b>2118</b> | <b>2978</b> | <b>100</b>         | <b>91</b>                        | <b>9</b>             | <b>0</b>    | <b>0</b>        |

Note: Yellow book issue for both arrival and departure; Vaccination coverage for both arrival and departure

## AFRO Public Health Events

The National Public Health Institute of Liberia continues to monitor acute public health emergencies and outbreaks occurring in the African Region in order to ensure preparedness and preventive measures are implemented



During this week, 72 events are being monitored through WHO Health Emergencies Program in the African Region. Key events highlighted during the week include the following:

- Measles in Democratic Republic of the Congo
- Ebola virus disease in Democratic Republic of the Congo
- Humanitarian in Northeast Nigeria
- Measles in Central African Republic

## Public Health Measures

### National level

- ◆ Providing technical remote support to Counties
  - Heighten surveillance in affected and surrounding communities
  - **URGENCY! URGENCY! URGENCY!**
    - There is no ribavirin to treat Lassa fever patients in Liberia as of June 30, 2019
    - There is no human rabies vaccine in country to provide post exposure prophylaxis
  - **ACTION! ACTION! ACTION!**
    - NPHIL requested WHO since April, 2019 for ribavirin;
    - NPHIL is sourcing money from Finance Ministry to procure rabies vaccine

### County level

- ◆ Case management for all reported cases ongoing
- ◆ Active case searches ongoing in affected communities for Measles and Lassa fever

## Outbreaks

### Gbeapo District, River Gee county Measle

- Reported two suspected cases for current week
- Total of 14 suspected cases reported (epi link-11 & lab. confirmed-3)
- All reported cases were treated and discharged
- Line listed 30 contacts, all are under follow up
- Routine vaccination coverage from January-June, 2019 31.9%

#### Public Health Actions

- Plan to conduct a 3 day mini vaccination campaign in the District
- from August 12-14, 2019 targeting 600 children ages 6-59 months

## Notes

- ◆ *Completeness* refers to the proportion of expected weekly IDSR reports received (target:  $\geq 80\%$ )
- ◆ *Timeliness* refers to the proportion of expected weekly IDSR reports received by the next level on time (target:  $\geq 80\%$ ). Time requirement for weekly IDSR reports:
  - Health facility - required on or before 5:00pm every Saturday to the district level
  - Health district - required on or before 5:00pm every Sunday to the county level
  - County - required on or before 5:00pm every Monday to the national level
- ◆ *Non-polio AFP rate* is the proportion of non-polio AFP cases per 100,000 among the estimated population under 15 years of age in 2017 (annual target:  $\geq 2/100,000$ )
- ◆ *Non-measles febrile rash illness rate* refers to the proportion of Negative measles cases per 100,000 population
- ◆ *Annualized maternal mortality rate* refers to the maternal mortality rate of a given period less than one year and it is the number of maternal deaths per 100,000 live births
- ◆ *Annualized neonatal mortality rate* refers to the neonatal mortality ratio of a given period less than one year and it is the number of neonatal deaths per 1,000 live births





# Liberia IDSR Epidemiology Bulletin

2019 Epi-week 31 (July 29 – Aug 4, 2019)



- ◆ *Epi-linked* refers to any suspected case that has not had a specimen taken for serologic confirmation but is linked to a laboratory confirmed case
- ◆ *Confirmed case* refers to a case whose specimen has tested positive or reactive upon laboratory testing, or has been classified as confirmed by either epidemiologic linkage with a confirmed case, or clinical compatibility with the disease or condition
- ◆ *Case Fatality Rate (CFR)* is the proportion of deaths among confirmed cases

# Liberia IDSR Epidemiology Bulletin

2019 Epi-week 31 (July 29 –Aug 4, 2019)

Appendix 1: Summary of immediately reportable diseases, conditions, and events by County during Epi week 31 and cumulative report, Liberia, 2019

| Counties                        | No. of Expected Health District | No. of Health District Reported | Acute Flaccid Paralysis (Suspected Polio) |          | Acute Bloody Diarrhoea (Shigellosis) |          | Severe Acute Watery Diarrhoea (Cholera) |          | Human Exposure to Animal bites (Suspected Rabies) |          | Lassa fever |           | Measles     |          | Meningitis |          | Maternal Mortality |            | Neonatal Mortality |          | Neonatal Tetanus |          | Ebola Virus Disease |          | Yellow fever |          | Monkeypox |          | Dengue fever |          | Buruli Ulcer |          | MDR Tuberculosis |          | Yaws     |          |          |
|---------------------------------|---------------------------------|---------------------------------|---|----------|--------------------------------------|----------|---|----------|---|----------|-------------|-----------|-------------|----------|------------|----------|--------------------|------------|--------------------|----------|------------------|----------|---------------------|----------|--------------|----------|-----------|----------|--------------|----------|--------------|----------|------------------|----------|----------|----------|----------|
|                                 |                                 |                                 | A   | D        | A                                    | D        | A                                       | D        | A   | D        | A           | D         | A           | D        | A          | D        | A                  | D          | A                  | D        | A                | D        | A                   | D        | A            | D        | A         | D        | A            | D        | A            | D        | A                | D        |          |          |          |
| Bomi                            | 4                               | 4                               | 0   | 0        | 0                                    | 0        | 0                                       | 0        | 0   | 0        | 0           | 0         | 0           | 0        | 0          | 0        | 0                  | 0          | 0                  | 0        | 0                | 0        | 0                   | 0        | 0            | 0        | 0         | 0        | 0            | 0        | 0            | 0        | 0                | 0        | 0        | 0        |          |
| Bong                            | 9                               | 9                               | 0   | 0        | 0                                    | 0        | 0                                       | 0        | 2   | 0        | 1           | 1         | 0           | 0        | 0          | 0        | 0                  | 2          | 3                  | 0        | 0                | 0        | 0                   | 0        | 0            | 0        | 0         | 0        | 0            | 0        | 0            | 0        | 0                | 0        | 0        | 0        |          |
| Gbarpolu                        | 5                               | 5                               | 0   | 0        | 0                                    | 0        | 0                                       | 0        | 1   | 0        | 0           | 0         | 0           | 0        | 0          | 0        | 0                  | 0          | 1                  | 0        | 0                | 0        | 0                   | 0        | 0            | 0        | 0         | 0        | 0            | 0        | 0            | 0        | 0                | 0        | 0        | 0        | 0        |
| Grand Bassa                     | 8                               | 8                               | 0   | 0        | 1                                    | 0        | 0                                       | 0        | 1   | 0        | 0           | 0         | 0           | 0        | 0          | 0        | 0                  | 0          | 0                  | 0        | 0                | 0        | 0                   | 0        | 0            | 0        | 0         | 0        | 0            | 0        | 0            | 0        | 0                | 0        | 0        | 0        | 0        |
| Grand Cape Mount                | 5                               | 5                               | 0   | 0        | 0                                    | 0        | 0                                       | 0        | 0   | 0        | 0           | 0         | 0           | 0        | 0          | 0        | 0                  | 0          | 0                  | 0        | 0                | 0        | 0                   | 0        | 0            | 0        | 0         | 0        | 0            | 0        | 0            | 0        | 0                | 0        | 0        | 0        | 0        |
| Grand Gedeh                     | 6                               | 6                               | 0   | 0        | 1                                    | 0        | 0                                       | 0        | 2   | 0        | 0           | 0         | 0           | 0        | 0          | 0        | 0                  | 0          | 0                  | 0        | 0                | 0        | 0                   | 1        | 0            | 0        | 0         | 0        | 0            | 0        | 0            | 0        | 0                | 0        | 0        | 0        | 0        |
| Grand Kru                       | 5                               | 5                               | 0   | 0        | 0                                    | 0        | 0                                       | 0        | 2   | 0        | 0           | 0         | 0           | 0        | 0          | 0        | 0                  | 0          | 1                  | 0        | 0                | 0        | 0                   | 0        | 0            | 0        | 0         | 0        | 0            | 0        | 0            | 0        | 0                | 0        | 0        | 0        | 0        |
| Lofa                            | 6                               | 6                               | 0   | 0        | 0                                    | 0        | 0                                       | 0        | 2   | 0        | 0           | 0         | 0           | 0        | 0          | 0        | 0                  | 0          | 0                  | 0        | 0                | 0        | 0                   | 0        | 0            | 1        | 0         | 0        | 0            | 0        | 0            | 0        | 0                | 0        | 0        | 0        | 0        |
| Margibi                         | 4                               | 4                               | 0   | 0        | 1                                    | 0        | 0                                       | 0        | 3   | 0        | 0           | 0         | 0           | 0        | 0          | 0        | 0                  | 1          | 1                  | 0        | 0                | 0        | 0                   | 0        | 0            | 0        | 0         | 0        | 0            | 0        | 0            | 0        | 0                | 0        | 0        | 0        | 0        |
| Maryland                        | 6                               | 6                               | 0   | 0        | 0                                    | 0        | 1                                       | 0        | 5   | 0        | 0           | 0         | 0           | 0        | 0          | 0        | 0                  | 1          | 3                  | 0        | 0                | 0        | 0                   | 0        | 0            | 0        | 0         | 0        | 0            | 0        | 0            | 0        | 0                | 0        | 0        | 0        | 0        |
| Montserrado                     | 7                               | 7                               | 1   | 0        | 0                                    | 0        | 0                                       | 0        | 5   | 0        | 0           | 0         | 0           | 0        | 0          | 0        | 0                  | 0          | 4                  | 0        | 0                | 0        | 0                   | 0        | 0            | 0        | 0         | 0        | 0            | 0        | 0            | 0        | 0                | 0        | 0        | 0        | 0        |
| Nimba                           | 6                               | 6                               | 0   | 0        | 0                                    | 0        | 0                                       | 0        | 5   | 0        | 0           | 0         | 0           | 0        | 0          | 0        | 0                  | 0          | 2                  | 1        | 0                | 0        | 0                   | 0        | 0            | 0        | 0         | 0        | 0            | 0        | 0            | 0        | 0                | 0        | 0        | 0        | 0        |
| Rivercess                       | 6                               | 6                               | 0   | 0        | 0                                    | 0        | 0                                       | 0        | 0   | 0        | 0           | 0         | 0           | 0        | 0          | 0        | 0                  | 0          | 0                  | 0        | 0                | 0        | 0                   | 0        | 0            | 0        | 0         | 0        | 0            | 0        | 0            | 0        | 0                | 0        | 0        | 0        | 0        |
| River Gee                       | 6                               | 6                               | 0   | 0        | 0                                    | 0        | 1                                       | 0        | 0   | 0        | 0           | 0         | 0           | 0        | 0          | 0        | 0                  | 0          | 0                  | 0        | 0                | 0        | 0                   | 0        | 0            | 0        | 0         | 0        | 0            | 0        | 0            | 0        | 0                | 0        | 0        | 0        | 0        |
| Sinoe                           | 10                              | 10                              | 0   | 0        | 4                                    | 0        | 0                                       | 0        | 0   | 0        | 0           | 0         | 0           | 0        | 0          | 0        | 0                  | 1          | 0                  | 0        | 0                | 0        | 0                   | 0        | 0            | 0        | 0         | 0        | 0            | 0        | 0            | 0        | 0                | 0        | 0        | 0        | 0        |
| <b>Total Weekly</b>             | <b>93</b>                       | <b>93</b>                       | <b>1</b>                                  | <b>0</b> | <b>7</b>                             | <b>0</b> | <b>2</b>                                | <b>0</b> | <b>28</b>   | <b>0</b> | <b>0</b>    | <b>1</b>  | <b>30</b>   | <b>0</b> | <b>0</b>   | <b>0</b> | <b>6</b>           | <b>15</b>  | <b>1</b>           | <b>0</b> | <b>0</b>         | <b>0</b> | <b>1</b>            | <b>0</b> | <b>1</b>     | <b>0</b> | <b>1</b>  | <b>0</b> | <b>0</b>     | <b>0</b> | <b>0</b>     | <b>0</b> | <b>0</b>         | <b>0</b> | <b>0</b> | <b>0</b> | <b>0</b> |
| <b>Cumulative Reported</b>      |                                 |                                 | <b>40</b>                                 | <b>0</b> | <b>182</b>                           | <b>0</b> | <b>85</b>                               | <b>0</b> | <b>1097</b>                                       | <b>0</b> | <b>81</b>   | <b>12</b> | <b>1240</b> | <b>0</b> | <b>39</b>  | <b>0</b> | <b>178</b>         | <b>453</b> | <b>22</b>          | <b>0</b> | <b>13</b>        | <b>0</b> | <b>71</b>           | <b>0</b> | <b>52</b>    | <b>0</b> | <b>0</b>  | <b>0</b> | <b>0</b>     | <b>0</b> | <b>0</b>     | <b>0</b> | <b>0</b>         | <b>0</b> | <b>0</b> | <b>0</b> | <b>0</b> |
| <b>Cumulative Lab-confirmed</b> |                                 |                                 | <b>0</b>                                  | <b>0</b> | <b>12</b>                            | <b>0</b> | <b>0</b>                                | <b>0</b> | <b>0</b>  | <b>0</b> | <b>22</b>   | <b>8</b>  | <b>146</b>  | <b>0</b> | <b>0</b>   | <b>0</b> |                    |            | <b>0</b>           | <b>0</b> | <b>0</b>         | <b>0</b> | <b>0</b>            | <b>0</b> | <b>0</b>     | <b>0</b> | <b>0</b>  | <b>0</b> | <b>0</b>     | <b>0</b> | <b>0</b>     | <b>0</b> | <b>0</b>         | <b>0</b> | <b>0</b> | <b>0</b> |          |

D = Dead

A = Alive

Epidemiological bulletin published with support of WHO and CDC

**For comments or questions, please contact**

**Thomas K. Nagbe, MPH**

Director, Infectious Disease and Epidemiology Division  
National IHR Focal Person  
National Public Health Institute of Liberia  
Republic of Liberia

Email: [tnknue31112@gmail.com](mailto:tnknue31112@gmail.com)

Phone: +231 886 937386/777442444

Website: [www.nationalphil.org](http://www.nationalphil.org)

**Ralph W. Jetoh, MD**

Deputy Director  
Infectious Disease and Epidemiology Division  
National Public Health Institute of Liberia  
Republic of Liberia

Email: [ralphica2000@gmail.com](mailto:ralphica2000@gmail.com)

Phone: +231 886526388/777372655

Website: [www.nationalphil.org](http://www.nationalphil.org)

**National Public Health  
Institute of Liberia  
(NPIL)**

**MISSION**

*To prevent and control  
public health threats by  
promoting healthy  
outcomes and serving as a  
source of knowledge*

**VISION**

*A center of excellence to  
create health outcomes for  
Liberians through a strong  
preventive health system*

**EDITORIAL TEAM**

**NPIL**

*Roseline N. George  
Advertus N. Mianah  
Irene P. Pewu  
Godwina B. Williams  
Samuel Zayzay  
Lasee W. Colee  
T. Lafayette Hall  
Sumor L. Flomo  
McAllen S. Quiah  
Trokon O. Yeabah*

**Ministry of Health**

**Partners: WHO & US CDC**