



Liberia COVID-19 Daily Sitrep 443 (June 1, 2021)

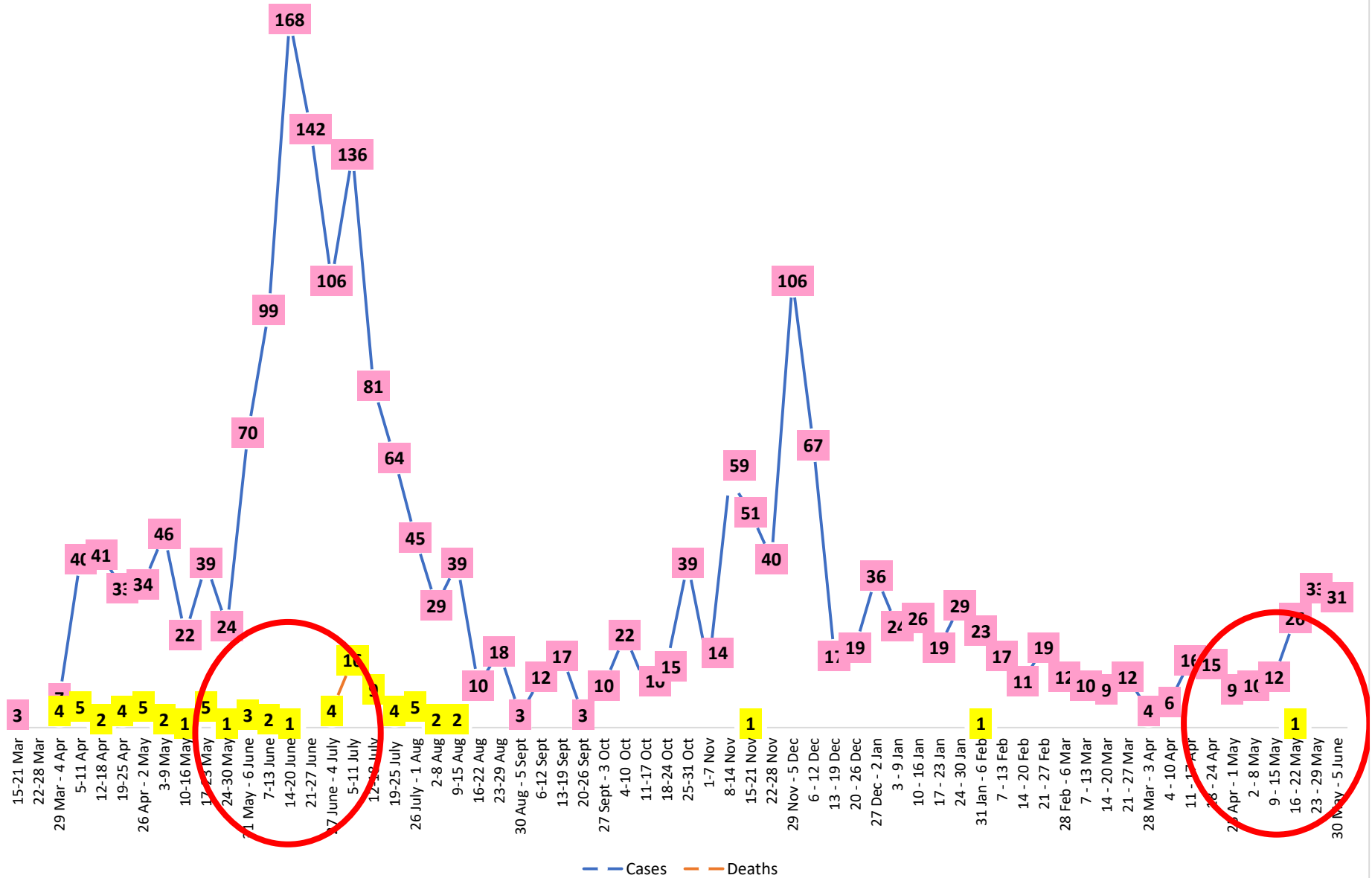
Summary of COVID-19 Cases by Reporting County, Liberia, 16 March 2020 – 1 June 2021

| County | | | Confirmed Cumulative Cases |
|-------------------------|----------------------------|---------------------------------|----------------------------|
| | Laboratory Confirmed Cases | Confirmed Cases on Contact List | |
| Bomi | 0 | 0 | 23 |
| Bong | 1 | 0 | 56 |
| Gbarpolu | 0 | 0 | 11 |
| Grand Bassa | 0 | 0 | 60 |
| Grand Cape Mount | 0 | 0 | 20 |
| Grand Kru | 0 | 0 | 18 |
| Grand Gedeh | 0 | 0 | 16 |
| Lofa | 0 | 0 | 45 |
| Margibi | 1 | 0 | 106 |
| Maryland | 0 | 0 | 34 |
| Montserrado | 7 | 0 | 1710 |
| Nimba | 0 | 0 | 73 |
| Rivercess | 0 | 0 | 5 |
| River Gee | 0 | 0 | 36 |
| Sinoe | 0 | 0 | 6 |
| NATIONAL | 9 | 0 | 2219 |

Demographic Breakdown (Gender & Age) of Confirmed COVID-19 Cases (16 March 2020 – 01 June 2021)

| County | <15 years | | 15 - 34 | | 35 - 54 | | 55+ | | All ages | | Total Confirmed |
|--------------------|-----------|-----------|------------|------------|------------|------------|------------|------------|-------------|------------|-----------------|
| | M | F | M | F | M | F | M | F | M | F | |
| Bomi | 2 | 2 | 3 | 5 | 7 | 3 | 0 | 1 | 12 | 11 | 23 |
| Bong | 3 | 1 | 6 | 6 | 20 | 9 | 8 | 3 | 37 | 19 | 56 |
| Gbarpolu | 1 | 2 | 0 | 2 | 4 | 1 | 1 | 0 | 6 | 5 | 11 |
| Grand Bassa | 11 | 2 | 9 | 11 | 13 | 8 | 4 | 2 | 37 | 23 | 60 |
| Grand Cape Mount | 0 | 0 | 11 | 0 | 8 | 0 | 1 | 0 | 20 | 0 | 20 |
| Grand Kru | 0 | 0 | 2 | 5 | 4 | 5 | 2 | 0 | 8 | 10 | 18 |
| Grand Gedeh | 0 | 1 | 1 | 2 | 7 | 3 | 2 | 0 | 10 | 6 | 16 |
| Lofa | 3 | 3 | 8 | 3 | 13 | 5 | 8 | 2 | 32 | 13 | 45 |
| Margibi | 6 | 4 | 15 | 13 | 28 | 12 | 18 | 10 | 67 | 39 | 106 |
| Maryland | 2 | 0 | 10 | 6 | 9 | 4 | 1 | 2 | 22 | 12 | 34 |
| Montserrado | 53 | 51 | 399 | 231 | 497 | 210 | 185 | 84 | 1134 | 576 | 1710 |
| Nimba | 1 | 4 | 15 | 10 | 28 | 6 | 5 | 4 | 49 | 24 | 73 |
| Rivercess | 0 | 0 | 2 | 3 | 0 | 0 | 0 | 0 | 2 | 3 | 5 |
| River Gee | 0 | 0 | 4 | 3 | 19 | 5 | 5 | 0 | 28 | 8 | 36 |
| Sinoe | 0 | 0 | 1 | 0 | 4 | 1 | 0 | 0 | 5 | 1 | 6 |
| National | 82 | 70 | 486 | 300 | 661 | 272 | 240 | 108 | 1469 | 750 | 2219 |

COVID-19 WEEKLY EPI-CURVE



Summary of COVID-19 Deaths by Reporting County, Liberia, 16 March 2020 – 1 June 2021

| County | ew Suspected Deaths | COVID-19 Treatment Unit | Total in COVID-19 Treatment Unit | Health Facility | Total in Health Facility | Community | Total in Community | Confirmed Deaths on Contact List | Cumulative Deaths |
|------------------|---------------------|-------------------------|----------------------------------|-----------------|--------------------------|-----------|--------------------|----------------------------------|-------------------|
| Bomi | 0 | 0 | 0 | 0 | 1 | 0 | 0 | 0 | 1 |
| Bong | 0 | 0 | 0 | 0 | 4 | 0 | 1 | 0 | 5 |
| Gbarpolu | 0 | 0 | 0 | 0 | 2 | 0 | 0 | 0 | 2 |
| Grand Bassa | 0 | 0 | 0 | 0 | 0 | 0 | 0 | 0 | 0 |
| Grand Cape Mount | 0 | 0 | 0 | 0 | 0 | 0 | 0 | 0 | 0 |
| Grand Gedeh | 0 | 0 | 0 | 0 | 0 | 0 | 0 | 0 | 0 |
| Grand Kru | 0 | 0 | 0 | 0 | 0 | 0 | 0 | 0 | 0 |
| Lofa | 0 | 0 | 0 | 0 | 6 | 0 | 5 | 0 | 11 |
| Maryland | 0 | 0 | 0 | 0 | 2 | 0 | 0 | 0 | 2 |
| Margibi | 0 | 0 | 2 | 0 | 4 | 0 | 0 | 0 | 6 |
| Montserrado | 0 | 0 | 9 | 1 | 20 | 0 | 16 | 0 | 46 |
| Nimba | 0 | 0 | 2 | 0 | 5 | 0 | 4 | 0 | 11 |
| Rivercess | 0 | 0 | 0 | 0 | 1 | 0 | 1 | 0 | 2 |
| River Gee | 0 | 0 | 0 | 0 | 0 | 0 | 0 | 0 | 0 |
| Sinoe | 0 | 0 | 0 | 0 | 1 | 0 | 0 | 0 | 1 |
| National | 0 | 0 | 13 | 1 | 46 | 0 | 27 | 0 | 86 |

Daily and Cumulative Healthcare Worker (HCW) COVID-19 Cases and Deaths by County, Liberia, 16 March 2020 – 1 June 2021

| County | DAILY REPORT | | | | | | CUMULATIVE CASES (ALIVE & DEAD) | |
|-----------------|---|-----------|----------|-------------------|----------------------------|---------------------------------|---------------------------------|----------|
| | New Suspected & High Risk Cases (Alive) | | | New Suspect Death | Laboratory Confirmed Cases | Confirmed Cases on Contact List | Confirmed | Deaths |
| | Suspect | High Risk | Total | | | | | |
| Bomi | 0 | 0 | 0 | 0 | 0 | 0 | 5 | 0 |
| Bong | 0 | 0 | 0 | 0 | 0 | 0 | 19 | 3 |
| Gbarpolu | 0 | 0 | 0 | 0 | 0 | 0 | 1 | 0 |
| Grand Bassa | 0 | 0 | 0 | 0 | 0 | 0 | 21 | 0 |
| Grand Gedeh | 0 | 0 | 0 | 0 | 0 | 0 | 2 | 0 |
| Grand Kru | 0 | 0 | 0 | 0 | 0 | 0 | 14 | 0 |
| Lofa | 0 | 0 | 0 | 0 | 0 | 0 | 16 | 0 |
| Margibi | 0 | 0 | 0 | 0 | 0 | 0 | 12 | 1 |
| Maryland | 0 | 0 | 0 | 0 | 0 | 0 | 16 | 0 |
| Montserrado | 0 | 0 | 0 | 0 | 0 | 0 | 88 | 1 |
| Nimba | 0 | 0 | 0 | 0 | 0 | 0 | 14 | 0 |
| Rivercess | 0 | 0 | 0 | 0 | 0 | 0 | 3 | 0 |
| River Gee | 0 | 0 | 0 | 0 | 0 | 0 | 10 | 0 |
| Sinoe | 0 | 0 | 0 | 0 | 0 | 0 | 3 | 0 |
| NATIONAL | 0 | 0 | 0 | 0 | 0 | 0 | 224 | 5 |

Cadre Cases and Deaths by Health Care Workers (16 March 2020 – 1 June 2021)

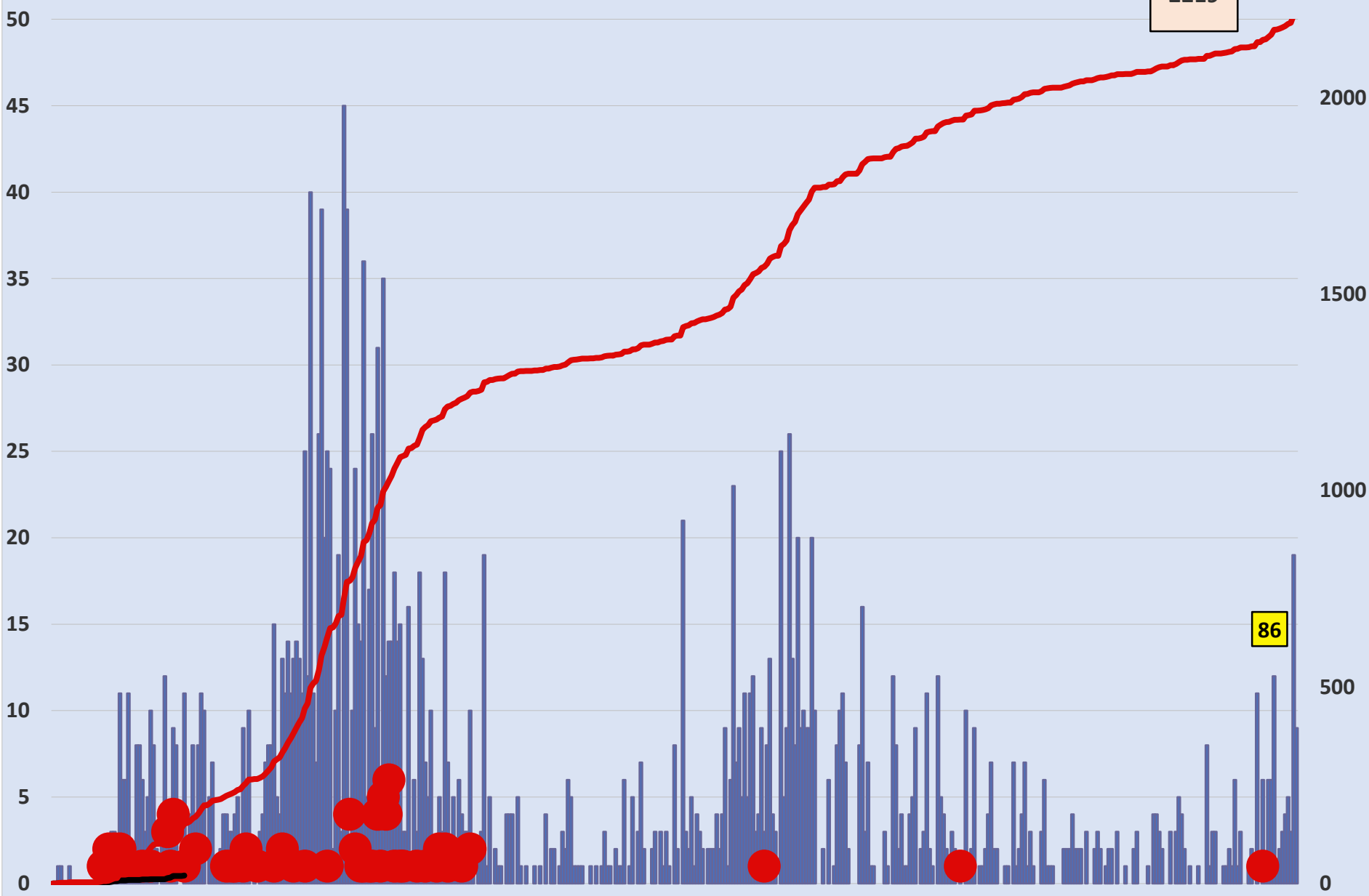
| Health Care Worker Cadre | Montserratado | | Margibi | | Nimba | | River Gee | | Sinoe | | Grand Kru | | Gbarpolu | | Bong | | Lofa | | Grand Bassa | | Maryland | | Bomi | | Rivercess | | Grand Gedeh | | National (Total) | |
|----------------------------------|---------------|----------|-----------|----------|-----------|----------|-----------|----------|----------|----------|-----------|----------|----------|----------|-----------|----------|-----------|----------|-------------|----------|-----------|----------|----------|----------|-----------|----------|-------------|----------|------------------|----------|
| | Cases | Deaths | Cases | Deaths | Cases | Deaths | Cases | Deaths | Cases | Deaths | Cases | Deaths | Cases | Deaths | Cases | Deaths | Cases | Deaths | Cases | Deaths | Cases | Deaths | Cases | Deaths | Cases | Deaths | Cases | Deaths | Cases | Deaths |
| Doctors | 17 | 0 | 1 | 0 | 0 | 0 | 1 | 0 | 0 | 0 | 0 | 0 | 0 | 0 | 1 | 0 | 0 | 0 | 1 | 0 | 0 | 0 | 0 | 0 | 0 | 0 | 0 | 21 | 0 | |
| Pharmacists | 4 | 0 | 0 | 0 | 0 | 0 | 0 | 0 | 0 | 0 | 0 | 0 | 0 | 0 | 0 | 0 | 0 | 0 | 0 | 0 | 0 | 0 | 0 | 0 | 0 | 0 | 0 | 4 | 0 | |
| Nurses | 23 | 1 | 2 | 0 | 2 | 0 | 5 | 0 | 0 | 0 | 2 | 0 | 1 | 1 | 12 | 1 | 8 | 0 | 5 | 0 | 1 | 0 | 1 | 0 | 0 | 0 | 0 | 62 | 3 | |
| Nurse Aid | 0 | 0 | 0 | 0 | 2 | 0 | 0 | 0 | 0 | 0 | 4 | 0 | 0 | 0 | 0 | 0 | 0 | 0 | 8 | 0 | 2 | 0 | 0 | 0 | 0 | 0 | 0 | 16 | 0 | |
| Midwife | 0 | 0 | 0 | 0 | 0 | 0 | 1 | 0 | 0 | 0 | 1 | 0 | 0 | 0 | 1 | 0 | 1 | 0 | 1 | 0 | 0 | 0 | 0 | 0 | 0 | 0 | 0 | 5 | 0 | |
| Physician Assistants | 8 | 0 | 1 | 0 | 1 | 0 | 1 | 0 | 0 | 0 | 1 | 0 | 0 | 0 | 0 | 0 | 1 | 0 | 1 | 0 | 0 | 0 | 0 | 0 | 0 | 0 | 0 | 14 | 0 | |
| Lab Technician | 9 | 0 | 1 | 0 | 2 | 0 | 0 | 0 | 1 | 0 | 1 | 0 | 0 | 0 | 0 | 0 | 2 | 0 | 0 | 0 | 10 | 0 | 0 | 0 | 3 | 0 | 0 | 29 | 0 | |
| Environmental Health Technicians | 5 | 0 | 0 | 0 | 0 | 0 | 0 | 0 | 0 | 0 | 0 | 0 | 0 | 0 | 0 | 0 | 0 | 0 | 0 | 0 | 0 | 0 | 0 | 0 | 0 | 0 | 0 | 5 | 0 | |
| Dieticians | 0 | 0 | 7 | 1 | 0 | 0 | 0 | 0 | 0 | 0 | 0 | 0 | 0 | 0 | 0 | 0 | 0 | 0 | 0 | 0 | 0 | 0 | 0 | 0 | 0 | 0 | 0 | 7 | 1 | |
| Hospital Cleaner | 1 | 0 | 0 | 0 | 0 | 0 | 0 | 0 | 0 | 0 | 1 | 0 | 0 | 0 | 1 | 0 | 0 | 0 | 1 | 0 | 2 | 0 | 0 | 0 | 0 | 0 | 0 | 6 | 0 | |
| Others* | 21 | 0 | 0 | 0 | 7 | 0 | 2 | 0 | 2 | 0 | 4 | 0 | 0 | 0 | 4 | 1 | 4 | 0 | 4 | 0 | 1 | 0 | 4 | 0 | 0 | 2 | 0 | 55 | 1 | |
| Total: | 88 | 1 | 12 | 1 | 14 | 0 | 10 | 0 | 3 | 0 | 14 | 0 | 1 | 1 | 19 | 2 | 16 | 0 | 21 | 0 | 16 | 0 | 5 | 0 | 3 | 0 | 2 | 0 | 224 | 5 |

***Others include the following:**

Radiologist, Microbiologist, Epidemiologist, Dispenser, Licensed Practical Nurse, Psychosocial worker, Hygienist, Logistician, Vaccinator, Ambulance Driver, Procurement Officer, Registrar, Accountant, Secretary, Hospital Administrator, Community Health Volunteer, GIS Specialist, EOC Coordinator

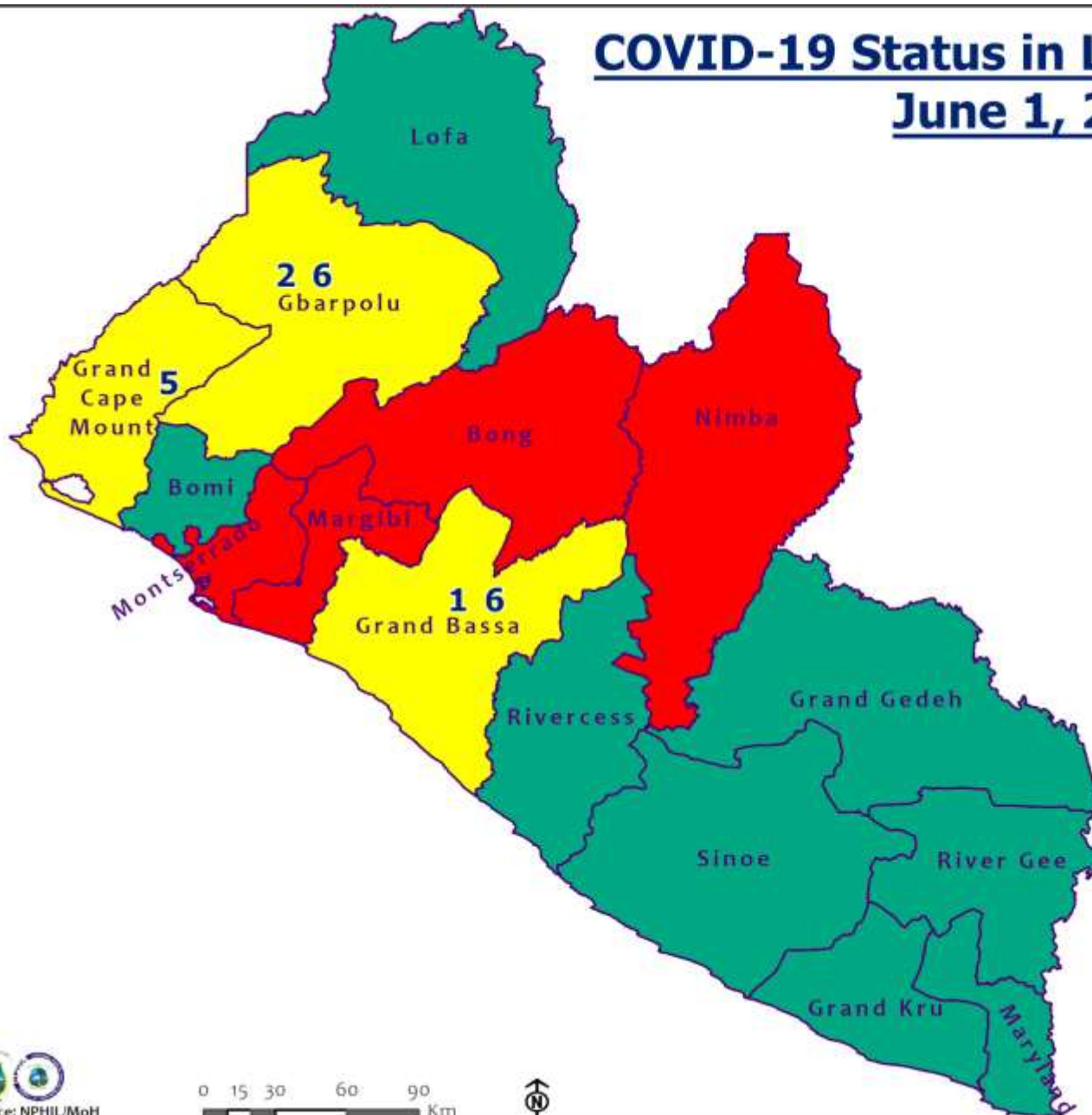
EPI-Curve of Confirmed Cases and Deaths

2219

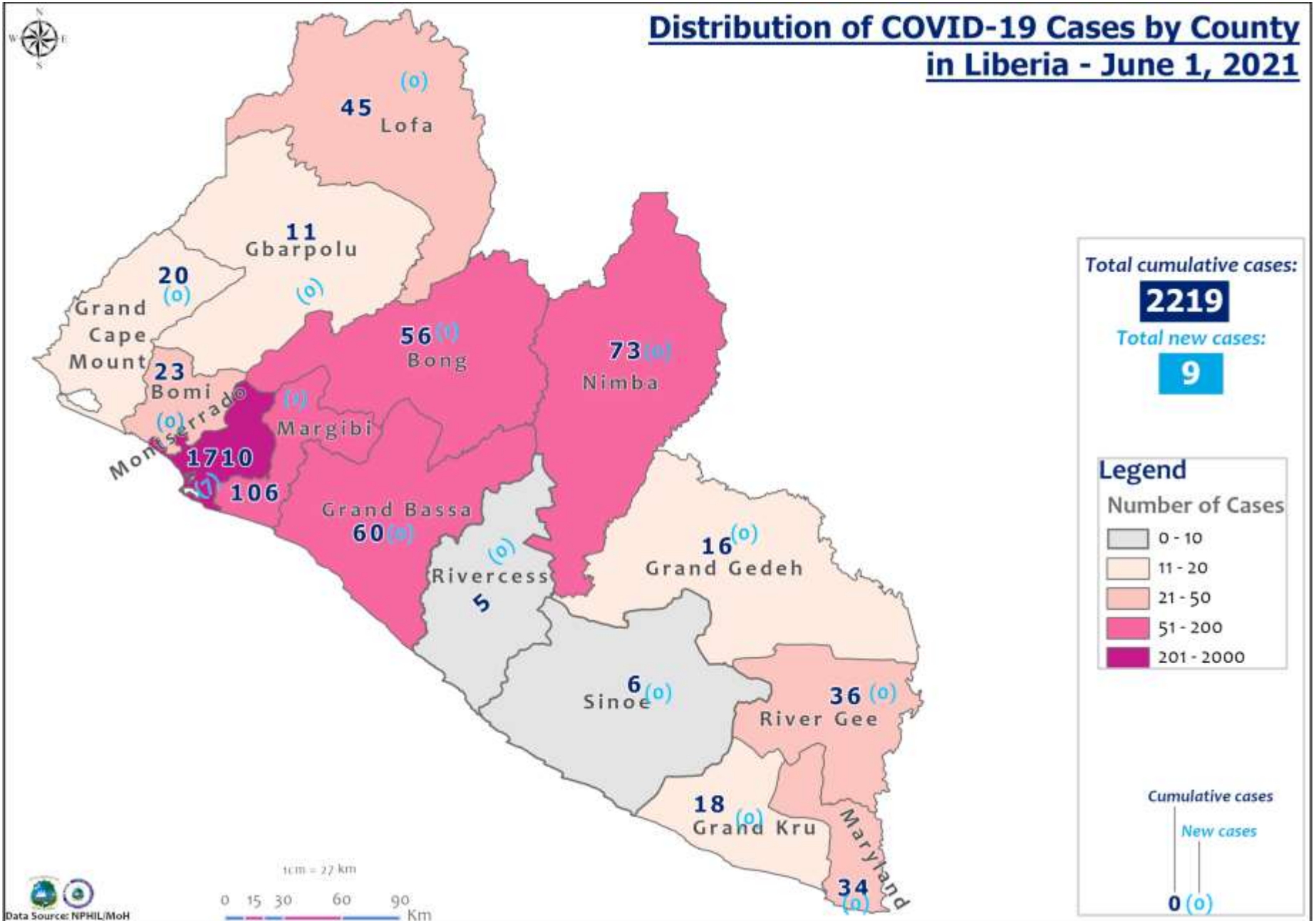


86

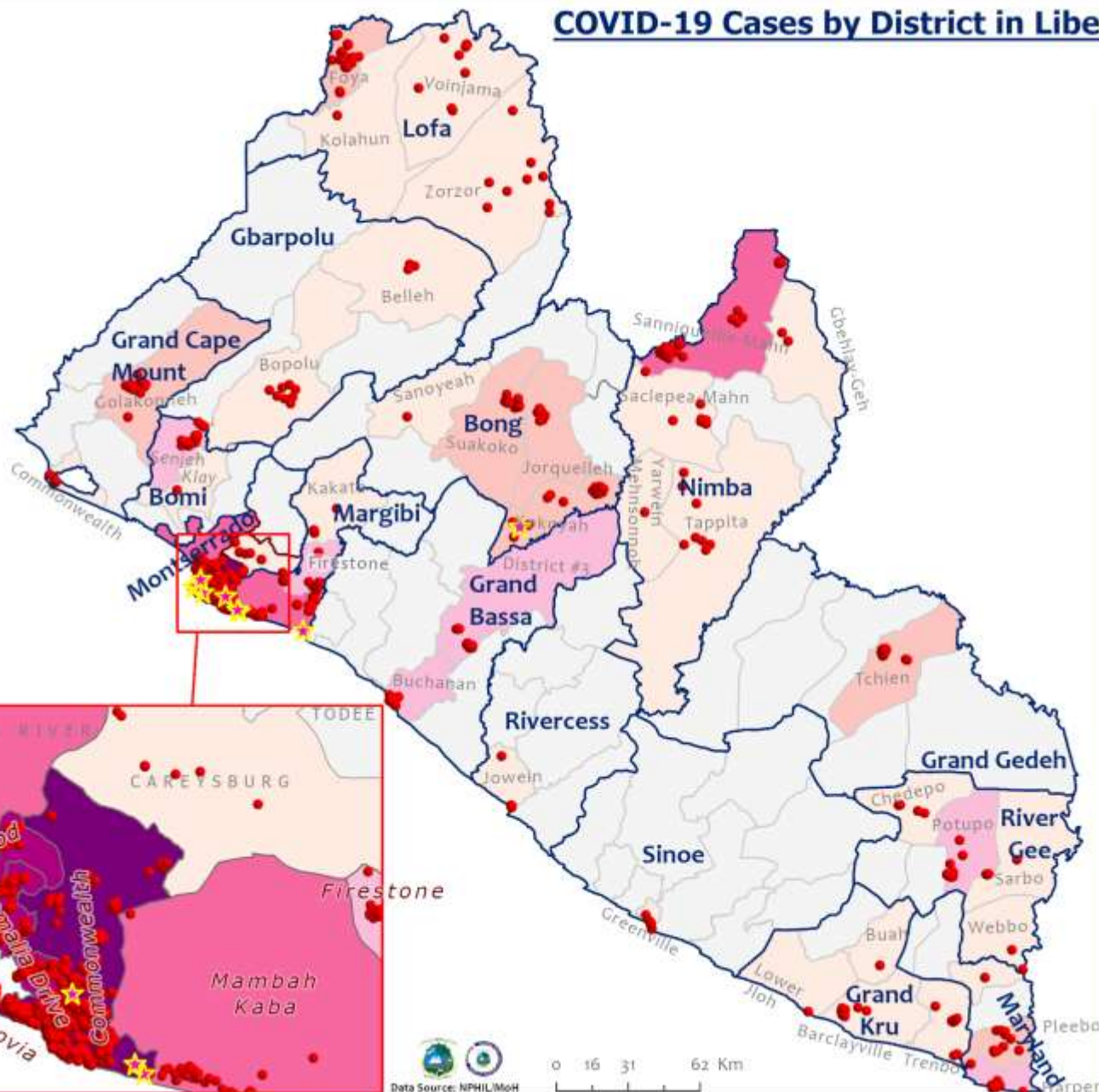
COVID-19 Status in Liberia by County June 1, 2021



Distribution of COVID-19 Cases by County in Liberia - June 1, 2021



COVID-19 Cases by District in Liberia - June 1, 2021



Total Cases: 2219

| Affected Counties | Cumulative Cases |
|-------------------|------------------|
| Montserrado | 1710 |
| Margibi | 106 |
| Nimba | 73 |
| Grand Bassa | 60 |
| Bong | 56 |
| Lofa | 45 |
| River Gee | 36 |
| Maryland | 34 |
| Bomi | 23 |
| Grand Cape Mount | 20 |
| Grand Kru | 18 |
| Grand Gedeh | 16 |
| Gbarpolu | 11 |
| Sinoe | 6 |
| Rivercess | 5 |

Legend

Case Status

- ★ New confirmed case
- Confirmed cases

Cases / District

- 0
- 1-10
- 11-20
- 21-50
- 51-100
- 101-200
- 201-600

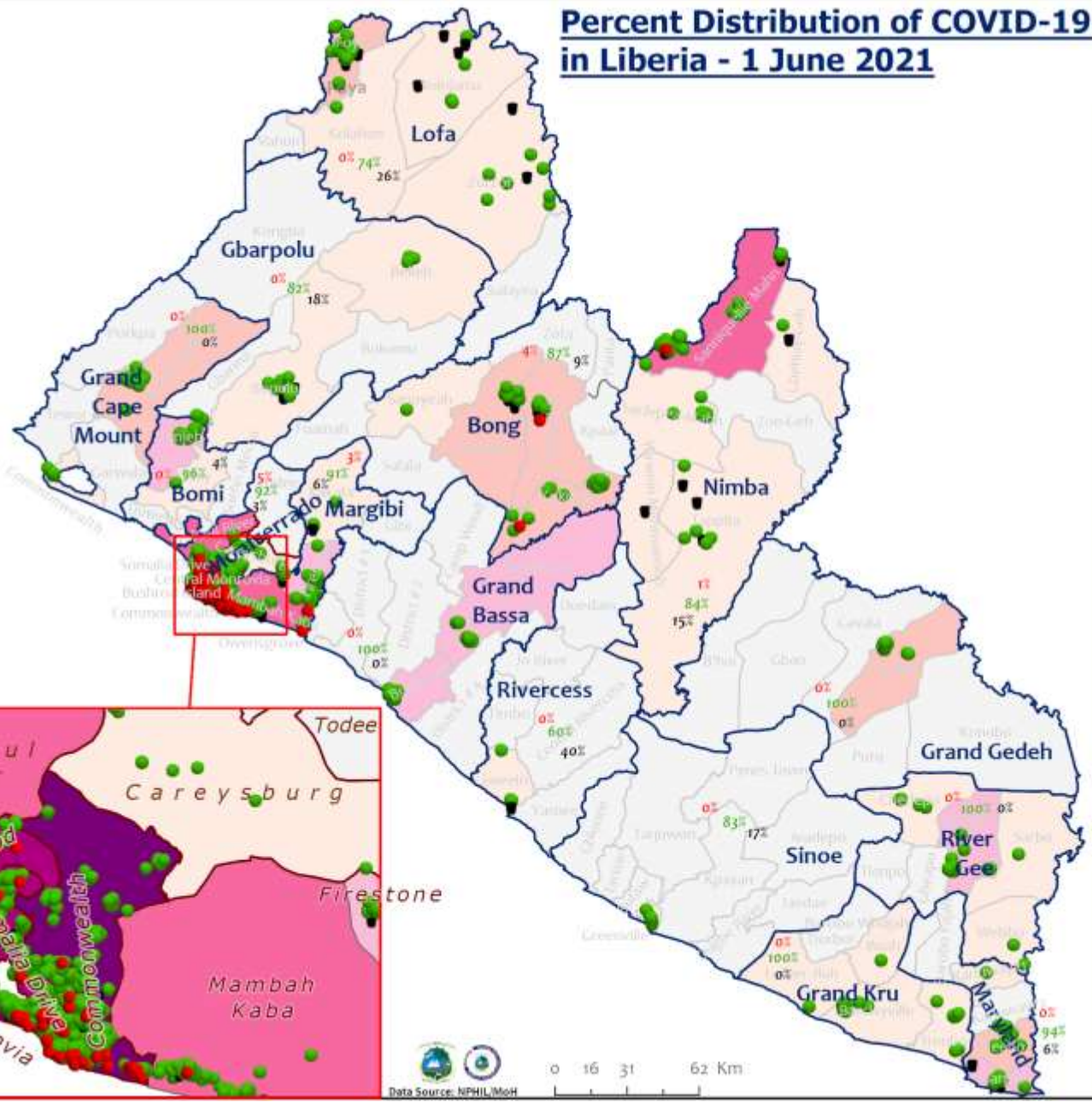


Data Source: NPHIL/MoH

0 16 31 62 Km



Percent Distribution of COVID-19 Cases by Status in Liberia - 1 June 2021



Total Cases: 2219

| Affected Counties | Cumulative Cases |
|-------------------|------------------|
| Montserrado | 1710 |
| Margibi | 106 |
| Nimba | 73 |
| Grand Bassa | 60 |
| Bong | 56 |
| Lofa | 45 |
| River Gee | 36 |
| Maryland | 34 |
| Bomi | 23 |
| Grand Cape Mount | 20 |
| Grand Kru | 18 |
| Grand Gedeh | 16 |
| Gbarpolu | 11 |
| Sinoe | 6 |
| Rivercess | 5 |

Legend

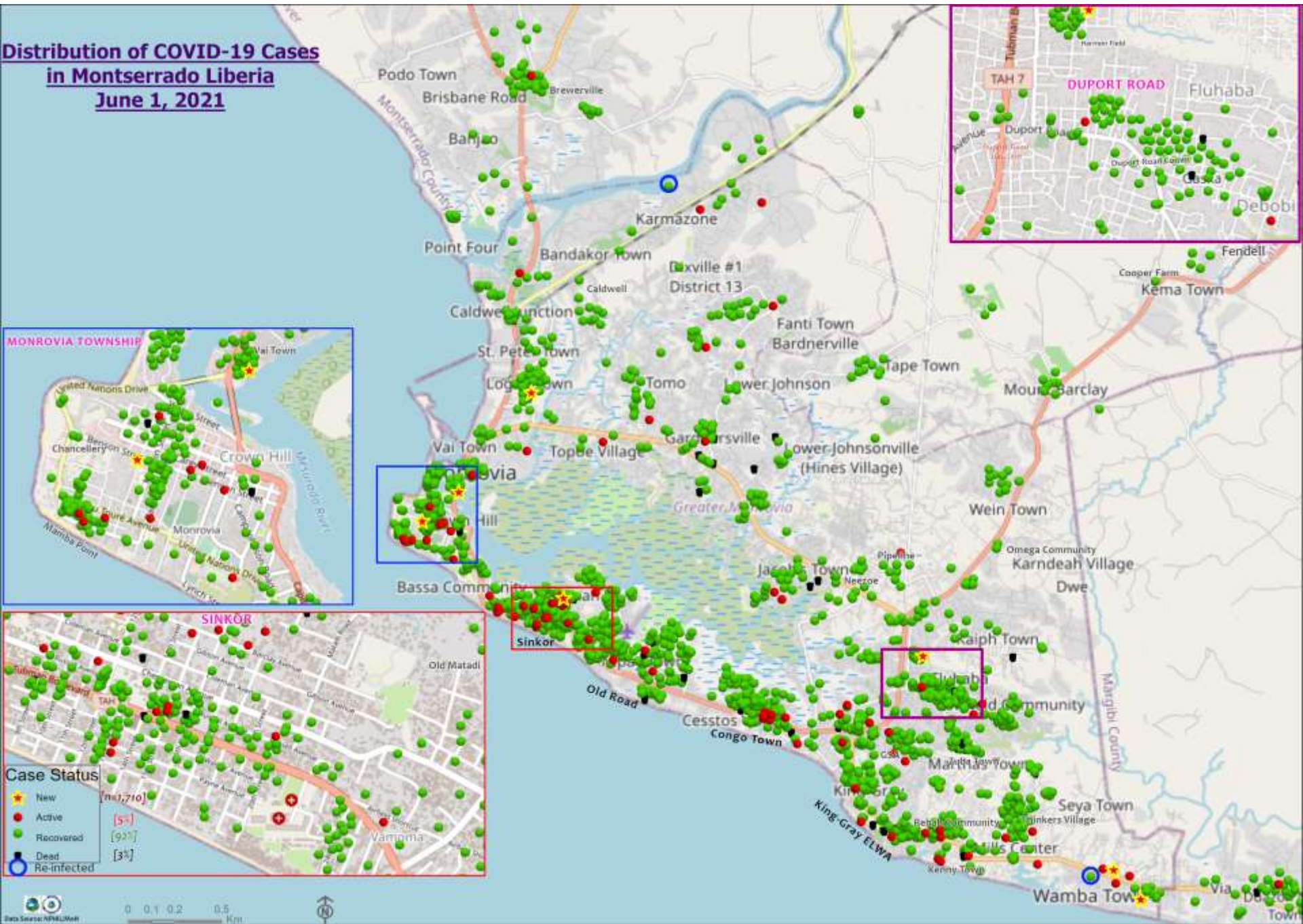
Case Status

- Active [4%]
- Recovered [92%]
- Dead [4%]

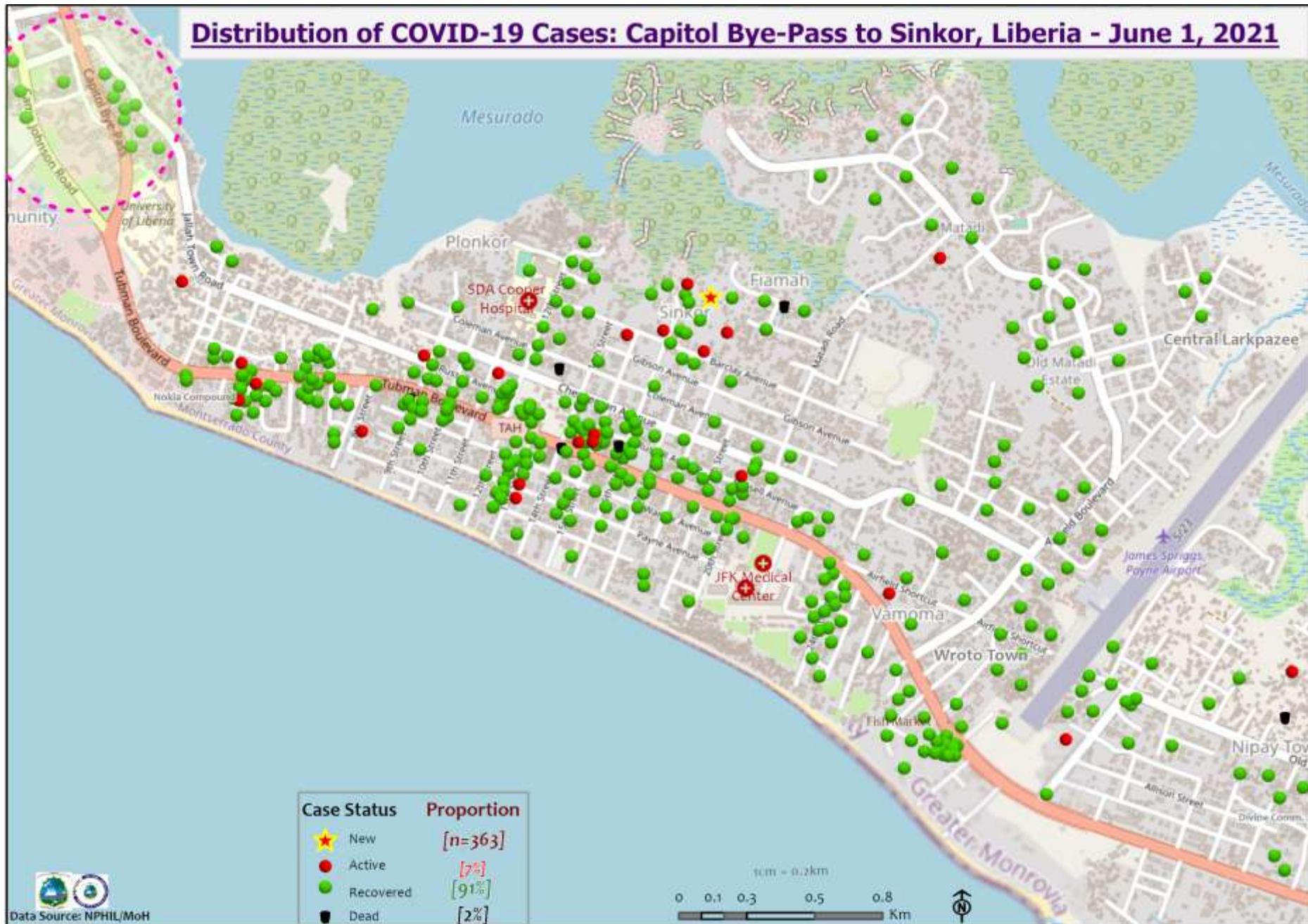
Cases / District

- 0
- 1-10
- 11-20
- 21-50
- 51-100
- 101-200
- 201-600

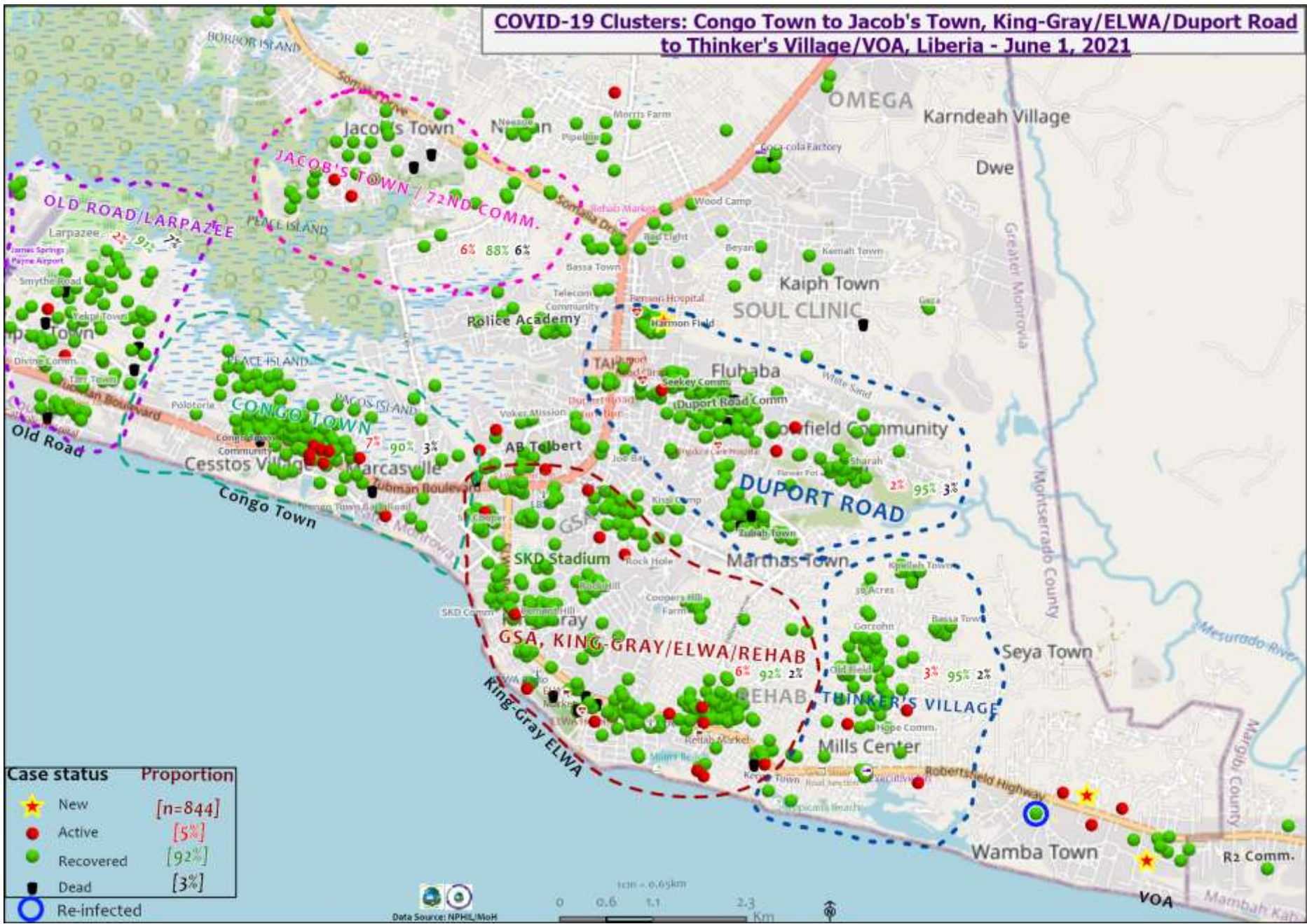
Distribution of COVID-19 Cases in Montserratado Liberia June 1, 2021



Distribution of COVID-19 Cases: Capitol Bye-Pass to Sinkor, Liberia - June 1, 2021



COVID-19 Clusters: Congo Town to Jacob's Town, King-Gray/ELWA/Duport Road to Thinker's Village/VOA, Liberia - June 1, 2021



| Case status | Proportion |
|---------------|------------|
| ★ New | [n=844] |
| ● Active | [5%] |
| ● Recovered | [92%] |
| ■ Dead | [3%] |
| ○ Re-infected | |

COVID-19 Cases Distribution: Scheffelin Township, Marshall City and Harbel, Margibi County, Liberia - June 1, 2021



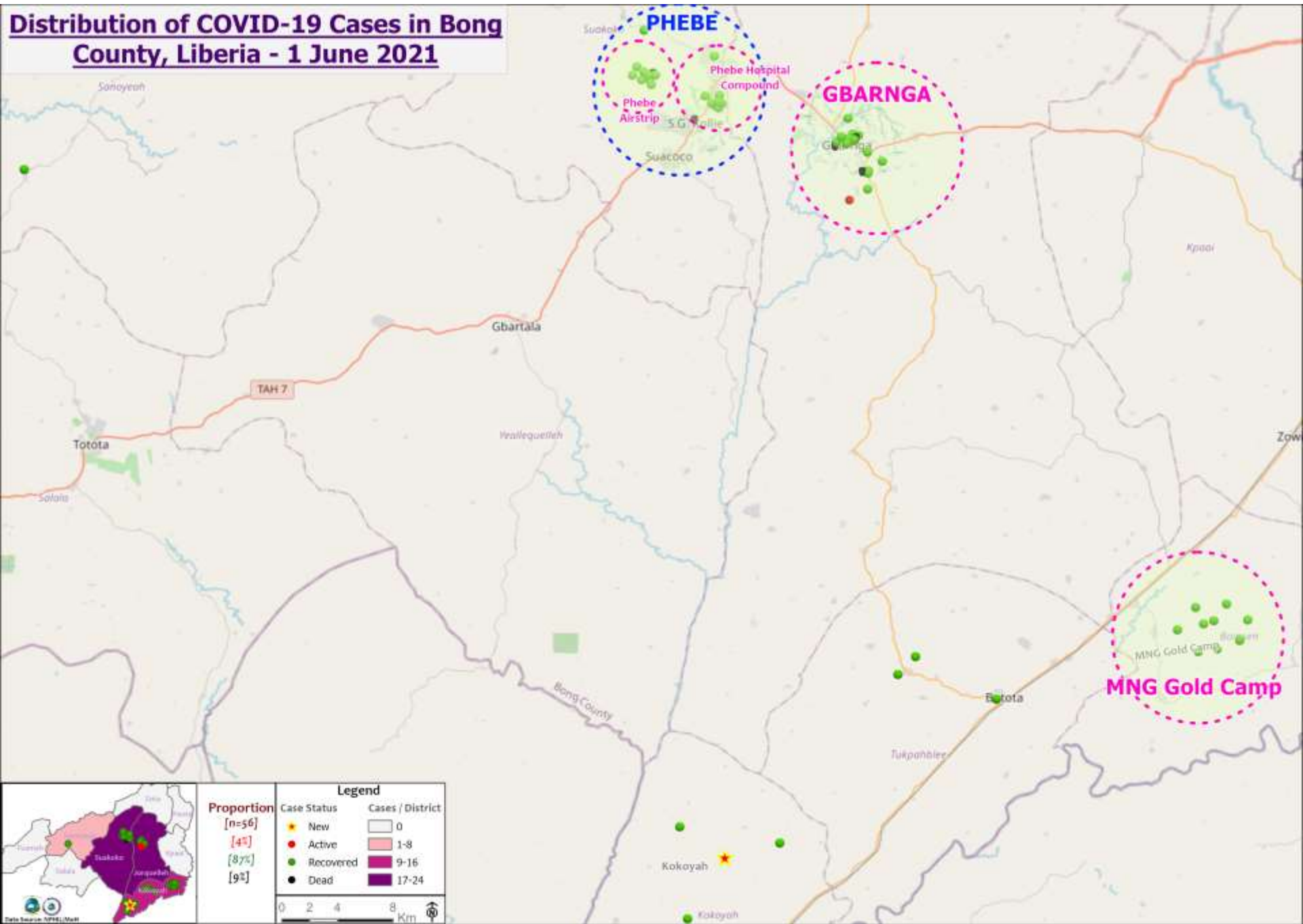
| Case Status Proportion | |
|------------------------|--------|
| ★ New | [n=82] |
| ● Active | [4%] |
| ● Recovered | [94%] |
| ■ Dead | [2%] |



Data Source: MPHIL/MoH



Distribution of COVID-19 Cases in Bong County, Liberia - 1 June 2021



| Proportion | | Legend | |
|------------|--|-------------|------------------|
| [n=56] | | Case Status | Cases / District |
| [4%] | | ● New | 0 |
| [87%] | | ● Active | 1-8 |
| [9%] | | ● Recovered | 9-16 |
| | | ● Dead | 17-24 |

0 2 4 8 Km



Daily Summary Report at Treatment Units – 1 June 2021

| Treatment Facility Name | New Admissions | Cumulative Admission | Daily Discharges | Cumulative Recoveries | Daily Deaths | Cumulative Deaths | Currently in treatment |
|--|----------------|----------------------|------------------|-----------------------|--------------|-------------------|------------------------|
| Bomi LGH Treatment Unit | 0 | 18 | 0 | 18 | 0 | 0 | 0 |
| Bong Treatment Unit | 0 | 26 | 0 | 26 | 0 | 0 | 0 |
| Chief Jallahlone Hospital Treatment Unit | 0 | 1 | 0 | 1 | 0 | 0 | 0 |
| Grand Bassa Arcelor Mittal Treatment Unit | 0 | 6 | 0 | 6 | 0 | 0 | 0 |
| Grand Bassa LGH Treatment Unit | 0 | 3 | 0 | 3 | 0 | 0 | 0 |
| LAC Treatment Unit | 0 | 42 | 0 | 42 | 0 | 0 | 0 |
| Starbase Treatment Unit | 0 | 648 | 1 | 639 | 0 | 9 | 0 |
| Union Treatment Center | 0 | 78 | 0 | 78 | 0 | 0 | 0 |
| Duside Hospital Treatment Unit | 0 | 42 | 0 | 40 | 0 | 2 | 0 |
| Martha Tubman Hospital Treatment Unit | 0 | 13 | 0 | 13 | 0 | 0 | 0 |
| Rally Time Treatment Unit | 0 | 4 | 0 | 4 | 0 | 0 | 0 |
| Sasstown Treatment Unit | 0 | 7 | 0 | 7 | 0 | 0 | 0 |
| Behwan Treatment Unit | 0 | 7 | 0 | 7 | 0 | 0 | 0 |
| FJ Grante Hospital Treatment Unit | 0 | 5 | 0 | 5 | 0 | 0 | 0 |
| JJ Dossen Hospital Treatment Unit | 0 | 9 | 0 | 9 | 0 | 0 | 0 |
| Pleebo Health Center Treatment Unit | 0 | 21 | 0 | 21 | 0 | 0 | 0 |
| Tellewoyan Memorial Hospital Treatment Unit | 0 | 13 | 0 | 13 | 0 | 0 | 0 |
| Foya Borma Hospital Treatment Unit | 0 | 12 | 0 | 12 | 0 | 0 | 0 |
| Zorzor Treatment Unit | 0 | 6 | 0 | 6 | 0 | 0 | 0 |
| Robert Sport Treatment Unit | 0 | 1 | 0 | 1 | 0 | 0 | 0 |
| Ganta United Methodist Hospital Treatment Unit | 0 | 1 | 0 | 1 | 0 | 0 | 0 |
| Arcelor Mittal Yekepa Treatment Unit | 0 | 12 | 0 | 12 | 0 | 0 | 0 |
| Jackson F. Doe Treatment Unit | 0 | 5 | 0 | 4 | 0 | 1 | 0 |
| St. Frances Hospital Treatment Unit | 0 | 2 | 0 | 2 | 0 | 0 | 0 |
| Fish Town Hospital Treatment Unit | 0 | 36 | 0 | 36 | 0 | 0 | 0 |
| E&J Medical Center Treatment Unit | 0 | 20 | 0 | 19 | 0 | 1 | 0 |
| TOTAL | 0 | 1038 | 1 | 1025 | 0 | 13 | 0 |

11 persons in POC; 2 suspected cases awaiting PCR test results

Home-Base Care of COVID-19 Cases

| County | New Admissions | Currently in Admissions | No. Followed-up (In-person/Phone) | Cumulative Admissions | New Recoveries | Cumulative Recoveries | Referrals to TU | Cumulative Referrals to TU | New Death | Cumulative Deaths |
|---------------|----------------|-------------------------|-----------------------------------|-----------------------|----------------|-----------------------|-----------------|----------------------------|-----------|-------------------|
| Montserrat | 0 | 15 | 15 | 267 | 0 | 244 | 0 | 8 | 0 | 0 |
| Nimba | | | | 0 | | | | | | |
| Margibi | | | | 0 | | | | | | |
| Bong | | | | 0 | | | | | | |
| Total: | 0 | 15 | 15 | 267 | 0 | 244 | 0 | 8 | 0 | 0 |

Laboratory Samples Evaluated – 01 June 2021

| County | Sample Evaluated | New Positive | Repeat Positive | Initial Negative | Repeat Test Negative | Pending Lab Result |
|--------------------------|------------------|--------------|-----------------|------------------|----------------------|--------------------|
| Bong | 3 | 1 | 0 | 2 | 0 | 0 |
| Grand Bassa | 2 | 0 | 0 | 2 | 0 | 0 |
| Grand cape Mount | 2 | 0 | 0 | 2 | 0 | 0 |
| Margibi | 31 | 1 | 0 | 30 | 0 | 0 |
| Montserrado | 435 | 7 | 4 | 419 | 0 | 5 |
| Nimba | 3 | 0 | 0 | 3 | 0 | 0 |
| TOTAL | 476 | 9 | 4 | 458 | 0 | 5 |
| Outgoing Traveler | 277 | 8 | 4 | 260 | 0 | 5 |
| Incoming Traveler | 150 | 0 | 0 | 150 | 0 | 0 |
| Voluntary | 49 | 1 | 0 | 48 | 0 | 0 |
| AFI Study | 0 | 0 | 0 | 0 | 0 | 0 |
| NRL | 438 | 8 | 4 | 421 | 0 | 5 |
| UN Clinic Lab | 38 | 1* | 0 | 37 | 0 | 0 |

*Contact of a case

Incoming Travelers Testing Positive for COVID-19 (May 2021)

| Country of embarkment | Cases |
|-----------------------|-----------|
| Ghana | 10 |
| UAE | 5 |
| USA | 5 |
| Australia | 1 |
| Pakistan | 1 |
| Nigeria | 1 |
| Lebanon | 1 |
| Canada | 1 |
| India | 1 |
| Others | 9 |
| Total | 35 |

| Occupation | Cases |
|----------------|-----------|
| Business | 8 |
| Student | 5 |
| PFM Consultant | 1 |
| Physician | 1 |
| Diplomat | 1 |
| Nurse Aide | 1 |
| Retired | 1 |
| Geologist | 1 |
| Others | 16 |
| Total | 35 |

| Nationality | Cases |
|--------------|-----------|
| Liberian | 13 |
| American | 4 |
| Ghanaian | 4 |
| Indian | 2 |
| Pakistani | 1 |
| Nigerian | 1 |
| Lebanese | 1 |
| Canadian | 1 |
| Australian | 1 |
| Others | 7 |
| Total | 35 |

| Flight | Cases |
|---------------|-----------|
| Kenya Airways | 14 |
| ASKY | 9 |
| SN Brussels | 6 |
| Air France | 2 |
| AWA | 1 |
| Others | 3 |
| Total | 35 |

Summary of COVID-19 Contact Tracing in Response Counties

| County | New Contacts Line listed | Cumulative Contacts | No. of Health Care Workers as Contacts | Cumulative no. of Health Care Workers as contacts | Contacts became a case | Cumulative contacts that became a case | Contacts Completed 14 Days | Cumulative Contacts Completing 14 Days | Contacts Under Follow-up | Contacts lost to Follow-up |
|-------------------------|--------------------------|---------------------|--|---|------------------------|--|----------------------------|--|--------------------------|----------------------------|
| Montserratado | 0 | 6253 | 0 | 512 | 0 | 189 | 0 | 5497 | 55 | 3 |
| Margibi | 0 | 480 | 0 | 125 | 0 | 42 | 0 | 470 | 6 | 0 |
| Grand Bassa | 0 | 457 | 0 | 140 | 0 | 51 | 0 | 410 | 0 | 0 |
| Sinoe | 0 | 191 | 0 | 30 | 0 | 1 | 0 | 191 | 0 | 0 |
| Lofa | 0 | 758 | 0 | 103 | 0 | 34 | 0 | 726 | 0 | 0 |
| Nimba | 0 | 613 | 0 | 53 | 0 | 25 | 0 | 550 | 0 | 0 |
| Bong | 0 | 302 | 0 | 70 | 0 | 28 | 0 | 300 | 0 | 0 |
| Gbarpolu | 0 | 87 | 0 | 13 | 0 | 8 | 0 | 87 | 0 | 0 |
| Grand Cape Mount | 0 | 49 | 0 | 3 | 0 | 4 | 0 | 51 | 0 | 0 |
| RiverGee | 0 | 123 | 0 | 13 | 0 | 30 | 0 | 123 | 0 | 0 |
| Maryland | 0 | 208 | 0 | 28 | 0 | 19 | 0 | 136 | 0 | 0 |
| Bomi | 0 | 180 | 0 | 17 | 0 | 15 | 0 | 177 | 0 | 0 |
| Rivercess | 0 | 102 | 0 | 55 | 0 | 0 | 0 | 88 | 0 | 0 |
| Grand Kru | 0 | 333 | 0 | 131 | 0 | 17 | 0 | 330 | 0 | 0 |
| Grand Gedeh | 0 | 163 | 0 | 49 | 0 | 6 | 0 | 125 | 0 | 0 |
| National | 0 | 10299 | 0 | 1342 | 0 | 469 | 0 | 9261 | 61 | 3 |

Thank you for Listening