



Liberia COVID-19 Daily Sitrep 433 (May 22, 2021)

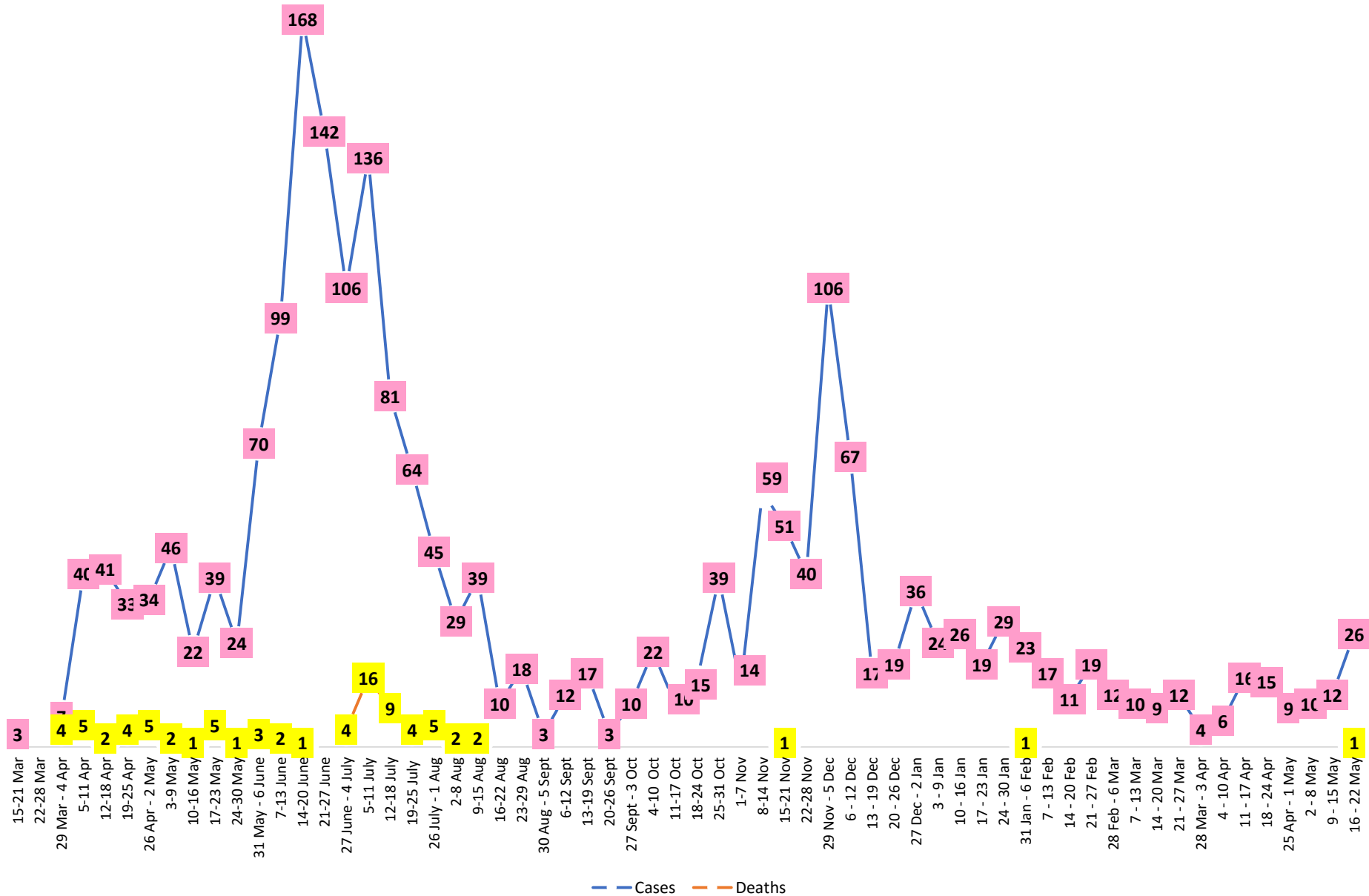
Summary of COVID-19 Cases by Reporting County, Liberia, 16 March 2020 – 22 May 2021

Bong	0	0	54
Gbarpolu	0	0	11
Grand Bassa	0	0	60
Grand Cape Mount	0	0	20
Grand Kru	0	0	18
Grand Gedeh	0	0	16
Lofa	0	0	45
Margibi	0	0	105
Maryland	0	0	34
Montserrado	6	0	1649
Nimba	0	0	73
Rivercess	0	0	5
River Gee	0	0	36
Sinoe	0	0	6
NATIONAL	6	0	2155

Demographic Breakdown (Gender & Age) of Confirmed COVID-19 Cases (16 March 2020 – 22 May 2021)

County	<15 years		15 - 34		35 - 54		55+		All ages		Total Confirmed
	M	F	M	F	M	F	M	F	M	F	
Bomi	2	2	3	5	7	3	0	1	12	11	23
Bong	3	1	4	6	20	9	8	3	35	19	54
Gbarpolu	1	2	0	2	4	1	1	0	6	5	11
Grand Bassa	11	2	9	11	13	8	4	2	37	23	60
Grand Cape Mount	0	0	11	0	8	0	1	0	20	0	20
Grand Kru	0	0	2	5	4	5	2	0	8	10	18
Grand Gedeh	0	1	1	2	7	3	2	0	10	6	16
Lofa	3	3	8	3	13	5	8	2	32	13	45
Margibi	6	4	15	13	28	12	17	10	66	39	105
Maryland	2	0	10	6	9	4	1	2	22	12	34
Montserrado	53	50	389	223	472	203	180	79	1094	555	1649
Nimba	1	4	15	10	28	6	5	4	49	24	73
Rivercess	0	0	2	3	0	0	0	0	2	3	5
River Gee	0	0	4	3	19	5	5	0	28	8	36
Sinoe	0	0	1	0	4	1	0	0	5	1	6
National	82	69	474	292	636	265	234	103	1426	729	2155

COVID-19 WEEKLY EPI-CURVE



Summary of COVID-19 Deaths by Reporting County, Liberia, 16 March 2020 – 22 May 2021

County	ew Suspected Deaths	COVID-19 Treatment Unit	Total in COVID-19 Treatment Unit	Health Facility	Total in Health Facility	Community	Total in Community	Confirmed Deaths on Contact List	Cumulative Deaths
Bomi	0	0	0	0	1	0	0	0	1
Bong	0	0	0	0	4	0	1	0	5
Gbarpolu	0	0	0	0	2	0	0	0	2
Grand Bassa	0	0	0	0	0	0	0	0	0
Grand Cape Mount	0	0	0	0	0	0	0	0	0
Grand Gedeh	0	0	0	0	0	0	0	0	0
Grand Kru	0	0	0	0	0	0	0	0	0
Lofa	0	0	0	0	6	0	5	0	11
Maryland	0	0	0	0	2	0	0	0	2
Margibi	0	0	2	0	4	0	0	0	6
Montserrado	0	0	9	1	20	0	16	0	43
Nimba	0	0	2	0	5	0	4	0	11
Rivercess	0	0	0	0	1	0	1	0	2
River Gee	0	0	0	0	0	0	0	0	0
Sinoe	0	0	0	0	1	0	0	0	1
National	0	0	13	1	46	0	27	0	86

Daily and Cumulative Healthcare Worker (HCW) COVID-19 Cases and Deaths by County, Liberia, 16 March 2020 – 22 May 2021

County	DAILY REPORT						CUMULATIVE CASES (ALIVE & DEAD)	
	New Suspected & High Risk Cases (Alive)			New Suspect Death	Laboratory Confirmed Cases	Confirmed Cases on Contact List	Confirmed	Deaths
	Suspect	High Risk	Total					
Bomi	0	0	0	0	0	0	5	0
Bong	0	0	0	0	0	0	19	3
Gbarpolu	0	0	0	0	0	0	1	0
Grand Bassa	0	0	0	0	0	0	21	0
Grand Gedeh	0	0	0	0	0	0	2	0
Grand Kru	0	0	0	0	0	0	14	0
Lofa	0	0	0	0	0	0	16	0
Margibi	0	0	0	0	0	0	12	1
Maryland	0	0	0	0	0	0	16	0
Montserrado	0	0	0	0	0	0	88	1
Nimba	0	0	0	0	0	0	14	0
Rivercess	0	0	0	0	0	0	3	0
River Gee	0	0	0	0	0	0	10	0
Sinoe	0	0	0	0	0	0	3	0
NATIONAL	0	0	0	0	0	0	224	5

Cadre Cases and Deaths by Health Care Workers (16 March 2020 – 22 May 2021)

Health Care Worker Cadre	Montserratado		Margibi		Nimba		River Gee		Sinoe		Grand Kru		Gbarpolu		Bong		Lofa		Grand Bassa		Maryland		Bomi		Rivercess		Grand Gedeh		National (Total)	
	Cases	Deaths	Cases	Deaths	Cases	Deaths	Cases	Deaths	Cases	Deaths	Cases	Deaths	Cases	Deaths	Cases	Deaths	Cases	Deaths	Cases	Deaths	Cases	Deaths	Cases	Deaths	Cases	Deaths	Cases	Deaths	Cases	Deaths
Doctors	17	0	1	0	0	0	1	0	0	0	0	0	0	0	1	0	0	0	1	0	0	0	0	0	0	0	0	21	0	
Pharmacists	4	0	0	0	0	0	0	0	0	0	0	0	0	0	0	0	0	0	0	0	0	0	0	0	0	0	0	4	0	
Nurses	23	1	2	0	2	0	5	0	0	0	2	0	1	1	12	1	8	0	5	0	1	0	1	0	0	0	0	62	3	
Nurse Aid	0	0	0	0	2	0	0	0	0	0	4	0	0	0	0	0	0	0	8	0	2	0	0	0	0	0	0	16	0	
Midwife	0	0	0	0	0	0	1	0	0	0	1	0	0	0	1	0	1	0	1	0	0	0	0	0	0	0	0	5	0	
Physician Assistants	8	0	1	0	1	0	1	0	0	0	1	0	0	0	0	0	1	0	1	0	0	0	0	0	0	0	0	14	0	
Lab Technician	9	0	1	0	2	0	0	0	1	0	1	0	0	0	0	0	2	0	0	0	10	0	0	0	3	0	0	29	0	
Environmental Health Technicians	5	0	0	0	0	0	0	0	0	0	0	0	0	0	0	0	0	0	0	0	0	0	0	0	0	0	0	5	0	
Dieticians	0	0	7	1	0	0	0	0	0	0	0	0	0	0	0	0	0	0	0	0	0	0	0	0	0	0	0	7	1	
Hospital Cleaner	1	0	0	0	0	0	0	0	0	0	1	0	0	0	1	0	0	0	1	0	2	0	0	0	0	0	0	6	0	
Others*	21	0	0	0	7	0	2	0	2	0	4	0	0	0	4	1	4	0	4	0	1	0	4	0	0	2	0	55	1	
Total:	88	1	12	1	14	0	10	0	3	0	14	0	1	1	19	2	16	0	21	0	16	0	5	0	3	0	2	0	224	5

***Others include the following:**

Radiologist, Microbiologist, Epidemiologist, Dispenser, Licensed Practical Nurse, Psychosocial worker, Hygienist, Logistician, Vaccinator, Ambulance Driver, Procurement Officer, Registrar, Accountant, Secretary, Hospital Administrator, Community Health Volunteer, GIS Specialist, EOC Coordinator

EPI-Curve of Confirmed Cases and Deaths

2155

2000

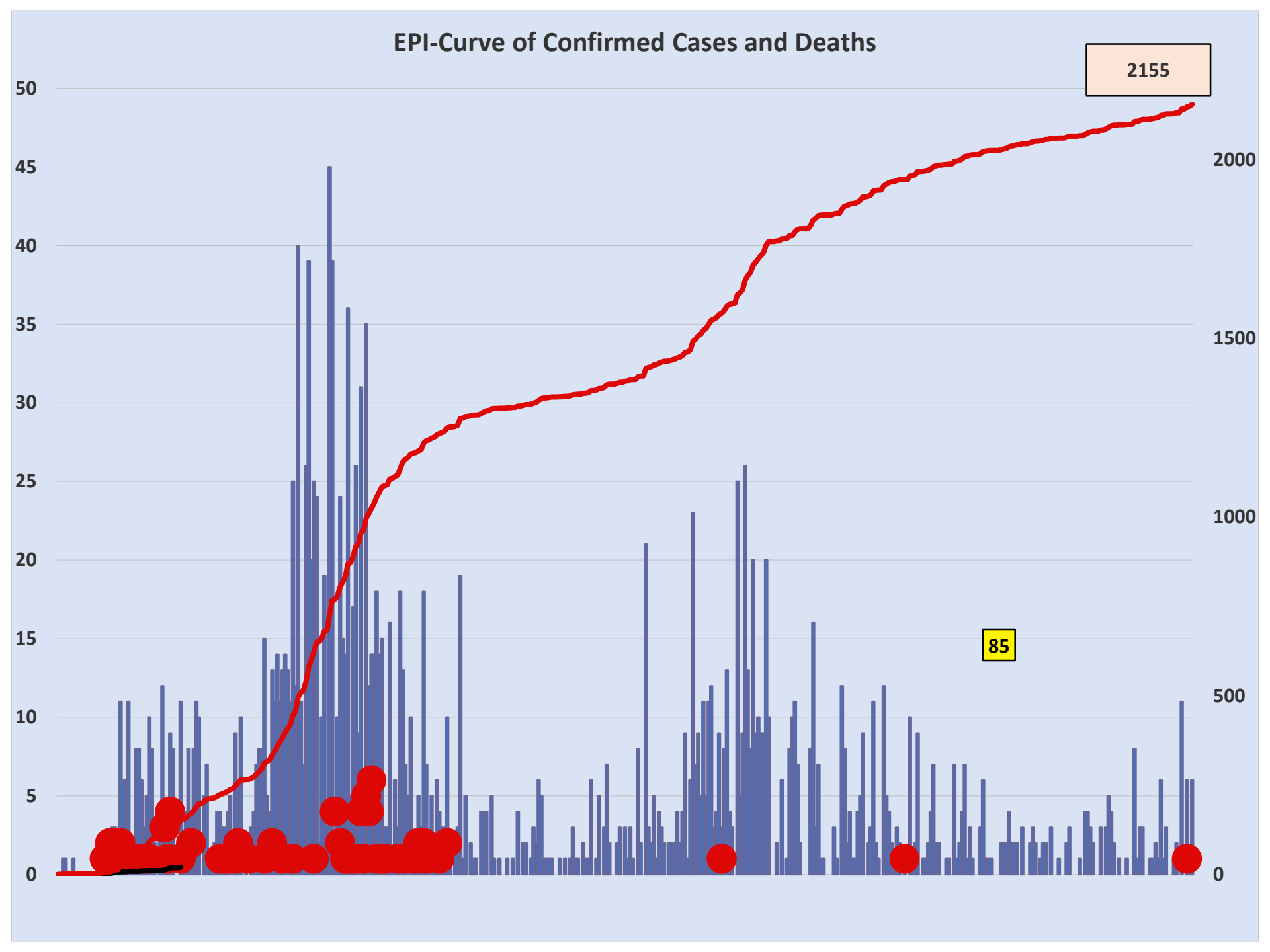
1500

1000

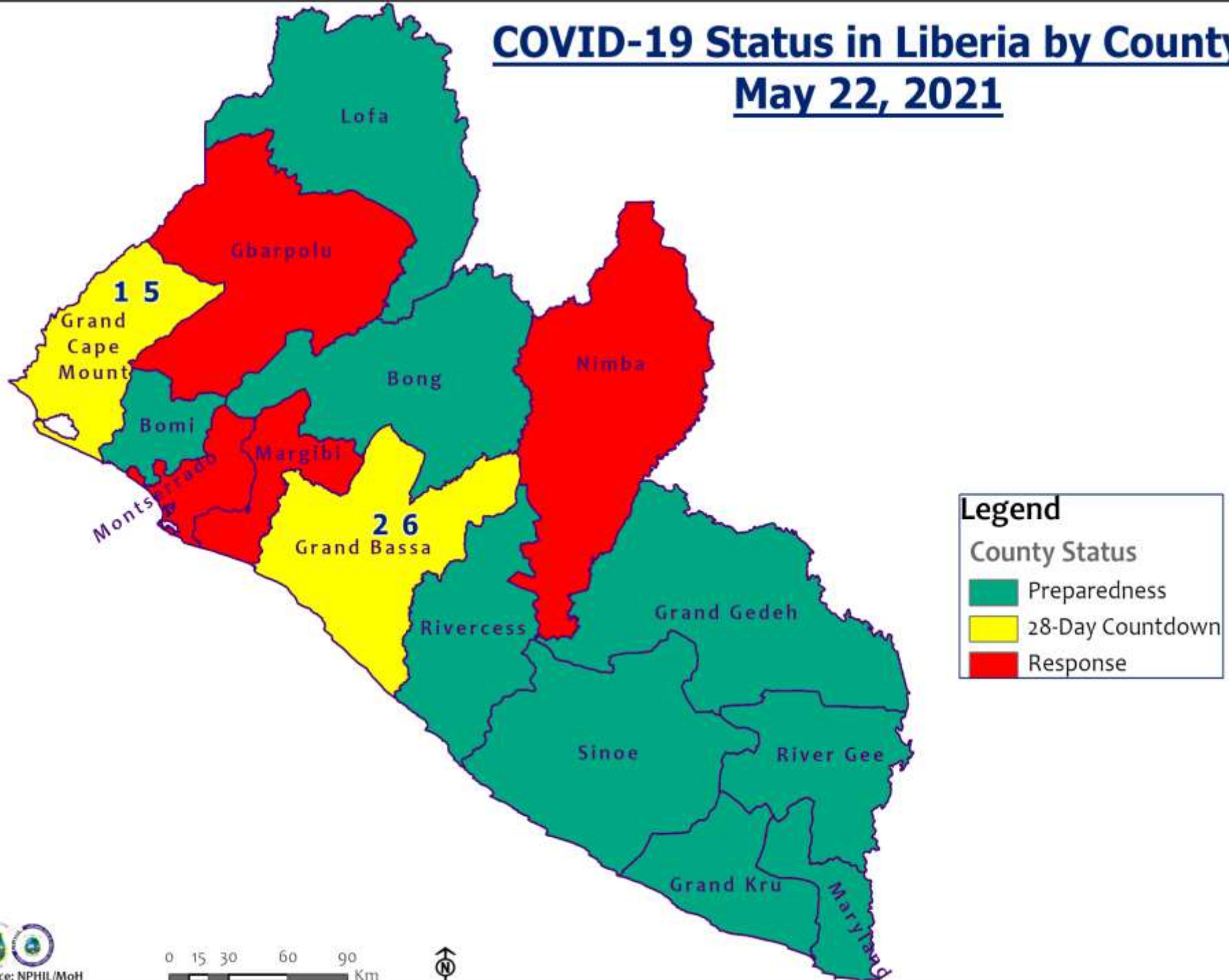
500

0

85



COVID-19 Status in Liberia by County May 22, 2021



Legend

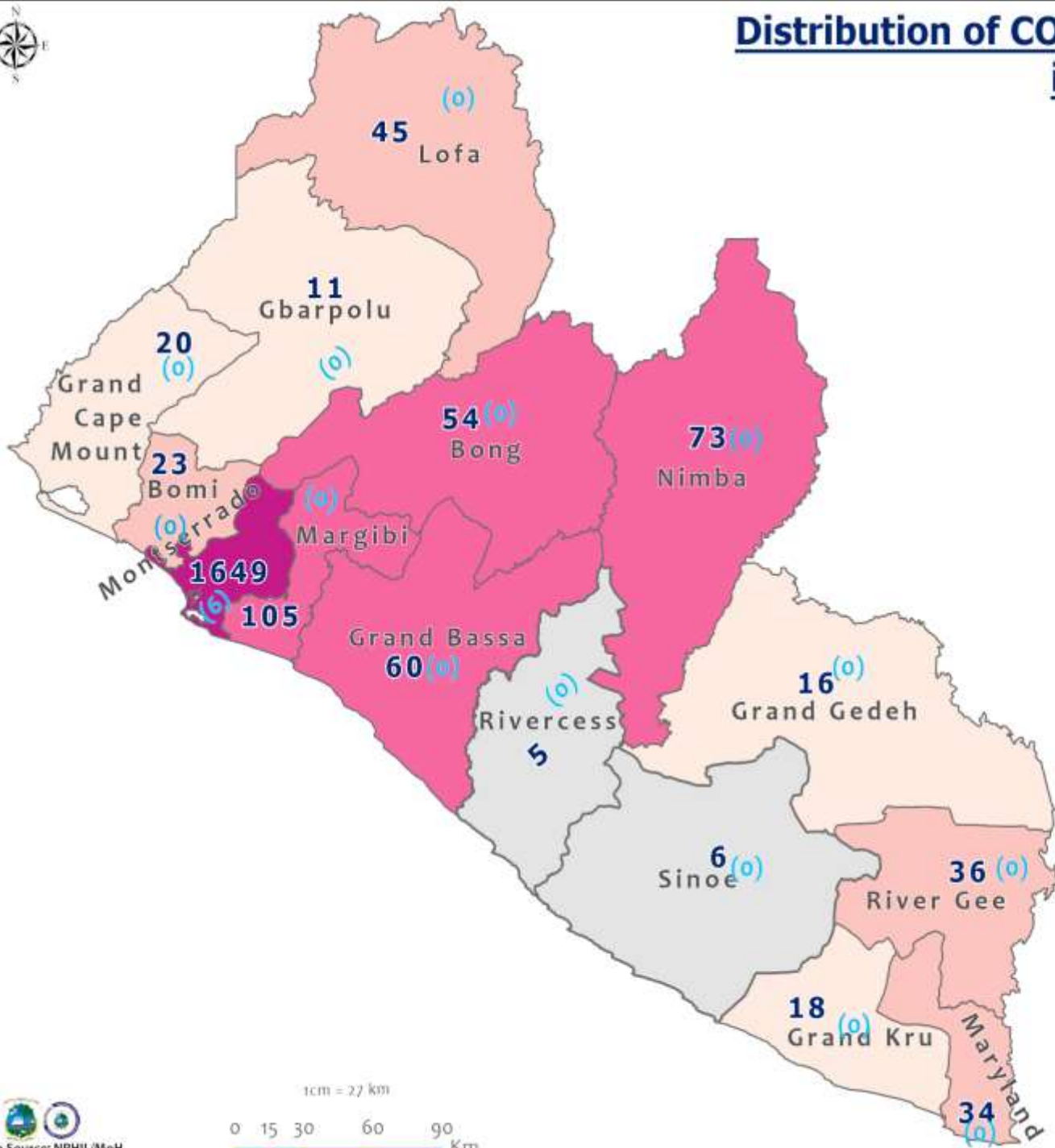
County Status

- Preparedness
- 28-Day Countdown
- Response

0 15 30 60 90 Km



Distribution of COVID-19 Cases by County in Liberia - May 22, 2021



Total cumulative cases:

2155

Total new cases:

6

Legend

Number of Cases

- 0 - 10
- 11 - 20
- 21 - 50
- 51 - 200
- 201 - 2000

Cumulative cases

New cases

0 (0)

1cm = 27 km

0 15 30 60 90 Km

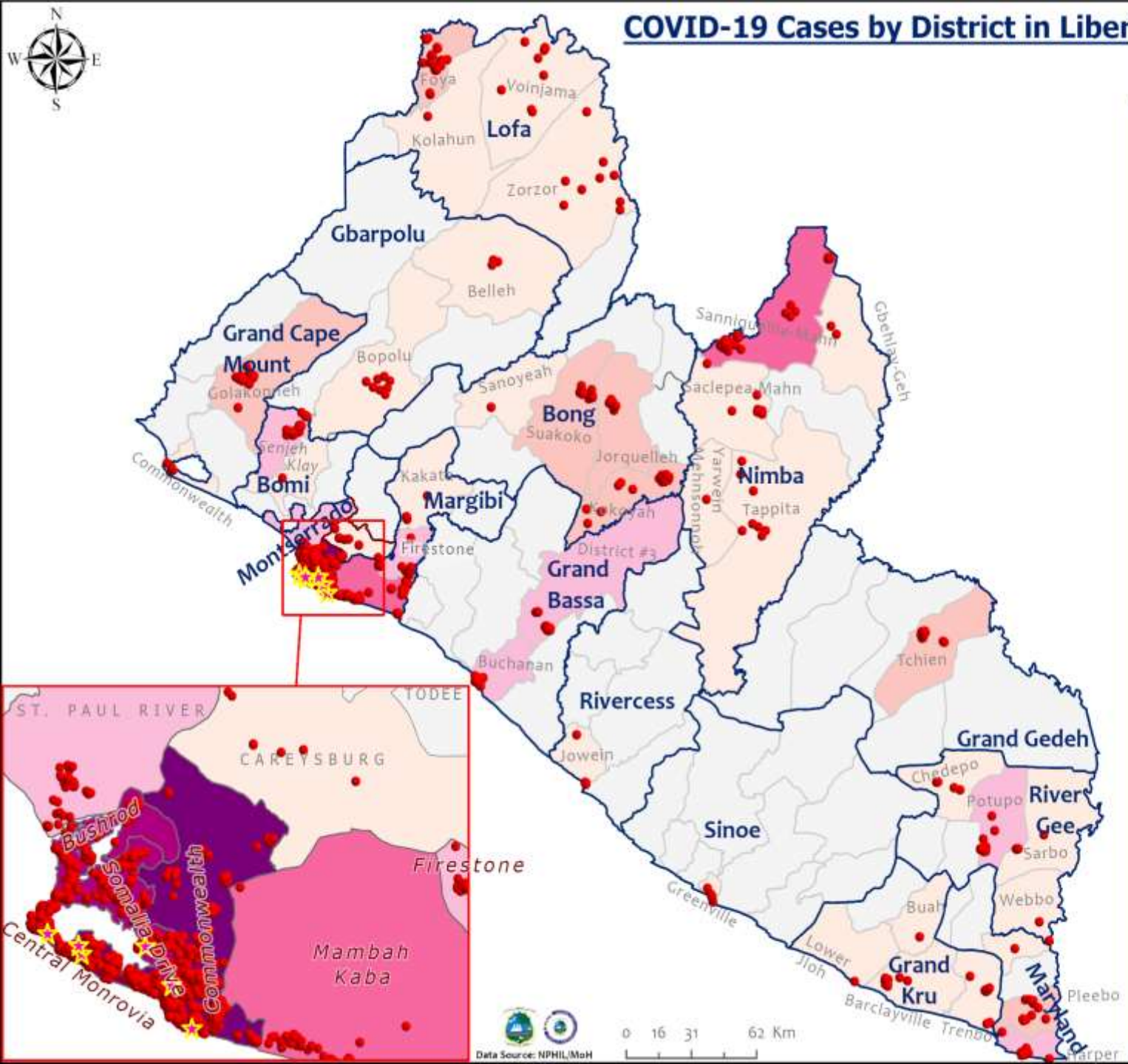


COVID-19 Cases by District in Liberia - May 22, 2021



Total Cases: 2155

Affected Counties	Cumulative Cases
Montserrado	1649
Margibi	105
Nimba	73
Grand Bassa	60
Bong	54
Lofa	45
River Gee	36
Maryland	34
Boni	23
Grand Cape Mount	20
Grand Kru	18
Grand Gedeh	16
Gbarpolu	11
Sinoe	6
Rivercess	5



Legend

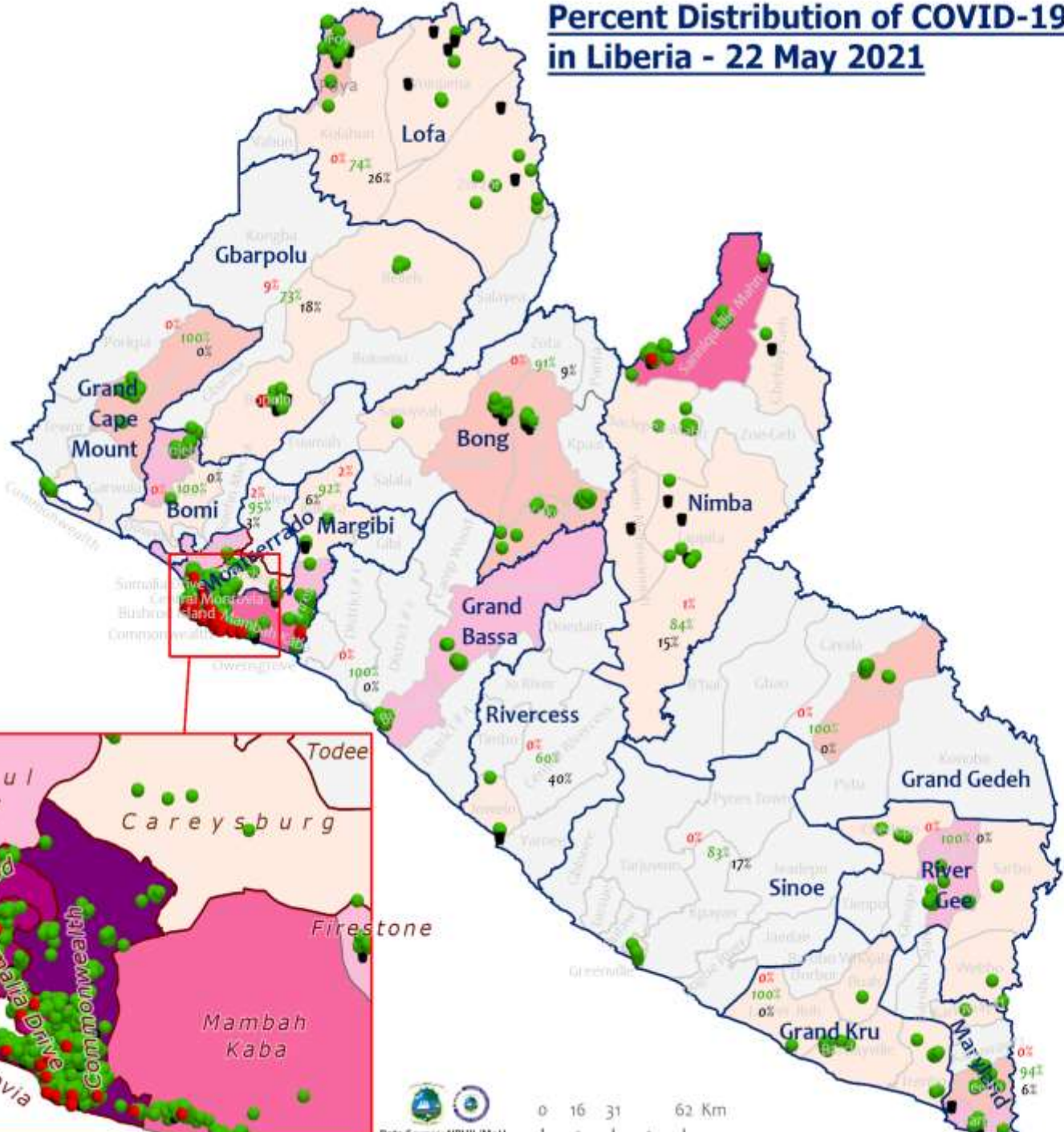
Case Status

- ★ New confirmed case
- Confirmed cases

Cases / District

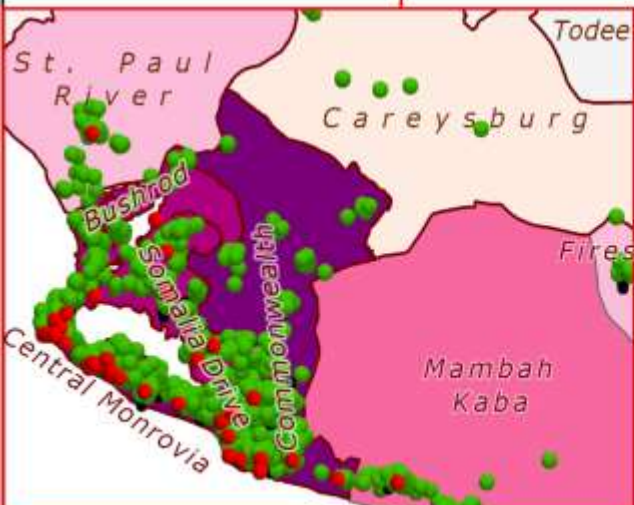
- 0
- 1-10
- 11-20
- 21-50
- 51-100
- 101-200
- 201-600

Percent Distribution of COVID-19 Cases by Status in Liberia - 22 May 2021



Total Cases: 2155

Affected Counties	Cumulative Cases
Montserrado	1649
Margibi	105
Nimba	73
Grand Bassa	60
Bong	54
Lofa	45
River Gee	36
Maryland	34
Bomi	23
Grand Cape Mount	20
Grand Kru	18
Grand Gedeh	16
Gbarpolu	11
Sinoe	6
Rivercess	5



Legend

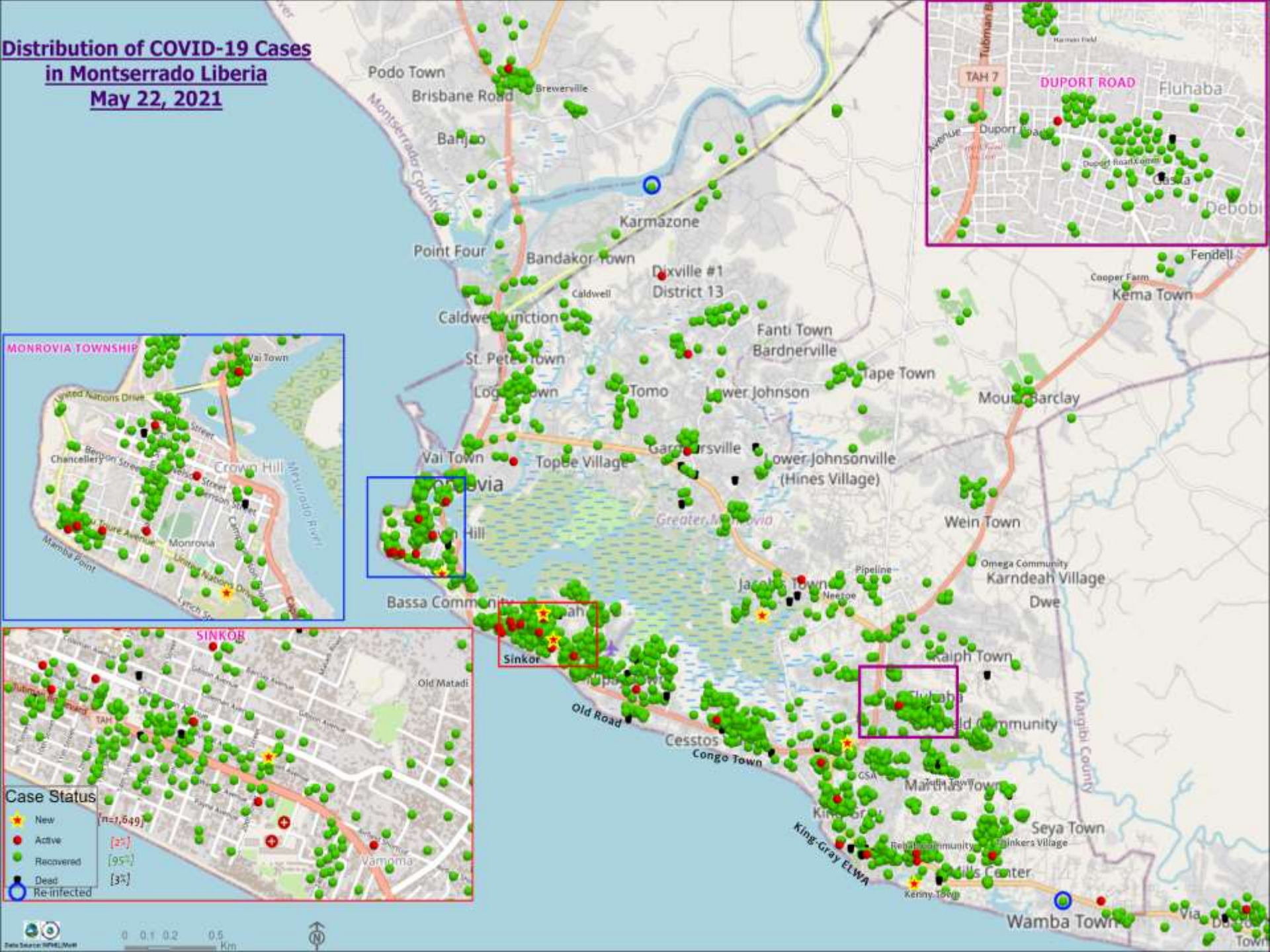
Case Status

- Active [2%]
- Recovered [94%]
- Dead [4%]

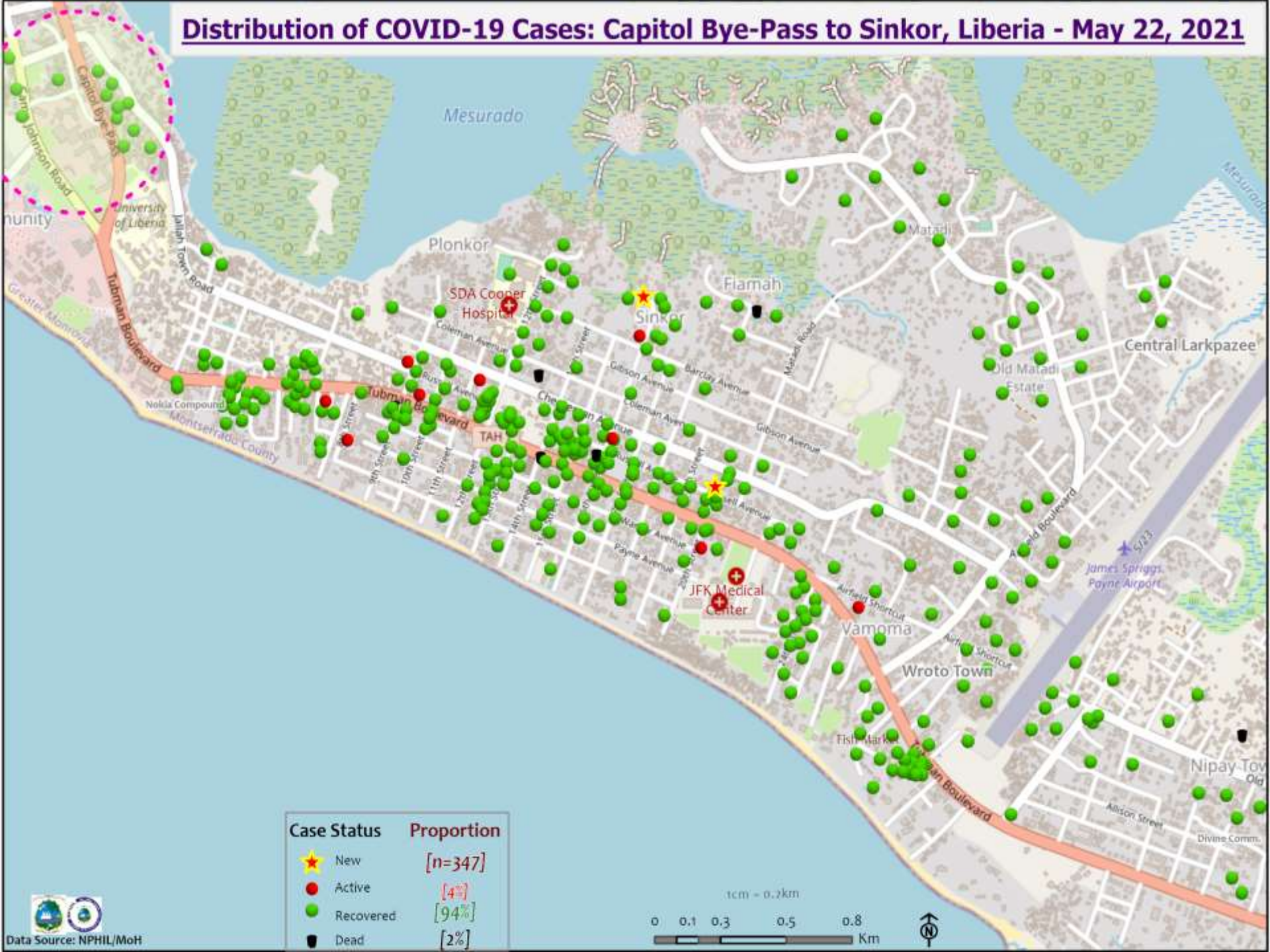
Cases / District

- 0
- 1-10
- 11-20
- 21-50
- 51-100
- 101-200
- 201-600

Distribution of COVID-19 Cases in Montserratado Liberia May 22, 2021



Distribution of COVID-19 Cases: Capitol Bye-Pass to Sinkor, Liberia - May 22, 2021



Case Status	Proportion
★ New	[n=347]
● Active	[4%]
● Recovered	[94%]
● Dead	[2%]



Daily Summary Report at Treatment Units – 22 May 2021

Treatment Facility Name	New Admissions	Cumulative Admission	Daily Discharges	Cumulative Recoveries	Daily Deaths	Cumulative Deaths	Currently in treatment
Bomi LGH Treatment Unit	0	18	0	18	0	0	0
Bong Treatment Unit	0	26	0	26	0	0	0
Chief Jallahlone Hospital Treatment Unit	0	1	0	1	0	0	0
Grand Bassa Arcelor Mittal Treatment Unit	0	6	0	6	0	0	0
Grand Bassa LGH Treatment Unit	0	3	0	3	0	0	0
LAC Treatment Unit	0	42	0	42	0	0	0
Starbase Treatment Unit	0	648	1	638	0	9	2
Union Treatment Center	0	78	0	78	0	0	0
Duside Hospital Treatment Unit	0	42	0	40	0	2	0
Martha Tubman Hospital Treatment Unit	0	13	0	13	0	0	0
Rally Time Treatment Unit	0	4	0	4	0	0	0
Sasstown Treatment Unit	0	7	0	7	0	0	0
Behwan Treatment Unit	0	7	0	7	0	0	0
FJ Grante Hospital Treatment Unit	0	5	0	5	0	0	0
JJ Dossen Hospital Treatment Unit	0	9	0	9	0	0	0
Pleebo Health Center Treatment Unit	0	21	0	21	0	0	0
Tellewoyan Memorial Hospital Treatment Unit	0	13	0	13	0	0	0
Foya Borma Hospital Treatment Unit	0	12	0	12	0	0	0
Zorzor Treatment Unit	0	6	0	6	0	0	0
Robert Sport Treatment Unit	0	1	0	1	0	0	0
Ganta United Methodist Hospital Treatment Unit	0	1	0	1	0	0	0
Arcelor Mittal Yekepa Treatment Unit	0	12	0	12	0	0	0
Jackson F. Doe Treatment Unit	0	5	0	4	0	1	0
St. Frances Hospital Treatment Unit	0	2	0	2	0	0	0
Fish Town Hospital Treatment Unit	0	36	0	36	0	0	0
E&J Medical Center Treatment Unit	0	20	0	19	0	1	0
TOTAL	0	1038	1	1024	0	13	2

Home-Base Care of COVID-19 Cases

County	New Admissions	Currently in Admissions	No. Followed-up (In-person/Phone)	Cumulative Admissions	New Recoveries	Cumulative Recoveries	Referrals to TU	Cumulative Referrals to TU	New Death	Cumulative Deaths
Montserrat	7	15	12	258	1	235	0	8	0	0
Gbarpolu				0						
Margibi				0						
Nimba				0						
Total:	7	15	13	258	0	234	0	8	0	0

Laboratory Samples Evaluated – 22 May 2021

County	Sample Evaluated	New Positive	Repeat Positive	Initial Negative	Repeat Test Negative	Pending Lab Result
Bomi	1	0	0	1	0	0
Bong	7	0	0	7	0	0
Grand Bassa	8	0	0	8	0	0
Grand Cape Mount	18	0	0	18	0	0
Grand Gedeh	1	0	0	1	0	0
Margibi	21	0	0	21	0	0
Maryland	1	0	0	1	0	0
Montserrado	388	6	0	359	0	23
Nimba	3	0	0	3	0	0
TOTAL	448	6	0	419	0	23
Outgoing Traveler	239	2	0	237	0	0
Incoming Traveler	203	4	0	176	0	23
Voluntary	6	0	0	6	0	0
AFI Study	0	0	0	0	0	0
NRL	448	6	0	419	0	23
UN Clinic Lab	0	0	0	0	0	0

Incoming Travelers Testing Positive for COVID-19 (May 2021)

Country of embarkment	Cases
Ghana	2
UAE	1
N/A	1
Total	4

Nationality	Cases
Liberian	2
Ghanaian	1
N/A	1
Total	4

Occupation	Cases
Military	1
Mechanic	1
Administrator	1
N/A	1
Total	4

Flight	Cases
ASKY	2
Kenya Airways	1
N/A	1
Total	4

Incoming Travelers Testing Positive for COVID-19 (May 2021)

Country of embarkment	Cases
Ghana	4
USA	3
UAE	2
Australia	1
Pakistan	1
Nigeria	1
Lebanon	1
Canada	1
India	1
Others	2
Total	17

Occupation	Cases
Business	4
Student	2
PFM Consultant	1
Physician	1
Diplomat	1
Nurse Aide	1
Retired	1
Geologist	1
Others	5
Total	17

Nationality	Cases
American	4
Liberian	4
Indian	2
Pakistani	1
Nigerian	1
Lebanese	1
Canadian	1
Australian	1
Ghanaian	1
N/A	1
Total	17

Flight	Cases
ASKY	6
Kenya Airways	4
SN Brussels	3
Air France	2
AWA	1
N/A	1
Total	17

National COVID-19 Vaccination Report May 22

Less than 60 years (Not Older adults)					60 years and above (Older adults)					Total
At least one health condition			No Existing health condition		At least one health condition		No Existing health condition			
	Male	Female	Male	Female	Male	Female	Male	Female		
Health Care workers	649	605	5562	4359	132	69	301	239	11916	
Others	2112	1575	19876	12598	821	736	2074	1434	41226	
Total Cov-1	2761	2180	25438	16957	953	805	2375	1673	53142	
Health Care workers	0	0	1	0	0	0	1	0	2	
Others	0	0	0	0	0	0	0	0	0	
Total Cov-2	0	0	1	0	0	0	1	0	2	

Summary of COVID-19 Daily PoE in Response Counties (22 May 2021)

Date of travel	Type of PoE	Point of Entry Name	Type of conveyance	# of Travelers Arrival	# of Travelers departure	# of travelers with elevated temp	Total Travelers screened		Total Passengers tested on Arrival	Total Foreign diplomat Exempted	# of Children under 5 years not tested	Passengers staying less than 5 days exempted	Total passports collected	Total # of Travelers	Cumulative Total		
							Male	Female									
22-May	Airport		Air Morac	0	0	0	0	0	0	0	0	0	0	0			
			Brussels	0	0	0	0	0	0	0	0	0	0	0	0		
			AWA	0	0	0	0	0	0	0	0	0	0	0	0		
			Air France	21	32	0	34	19	18	2	1	0	0	0	53		
			Air Cote D'Ivoire	38	43	0	44	37	32	6	0	0	4	0	0		
			DHL	0	0	0	0	0	0	0	0	0	0	0	0	0	
			Kenya	0	0	0	0	0	0	0	0	0	0	0	0	0	
			Asky	90	0	0	69	21	82	2	2	4	0	0	90		
			Others (Special flight)	0	0	0	0	0	0	0	0	0	0	0	0	0	
	James Spriggs Payne Airport		0	0	0	0	0	0	0	0	0	0	0	0			
	Land	Ganta Main	Land	0	0	0	0	0	0	0	0	0	0	0	0		
		Yekepa	Land	0	0	0	0	0	0	0	0	0	0	0	0		
		Loguatu	Land	0	0	0	0	0	0	0	0	0	0	0	0		
		Bo Water Side	Land	0	0	0	0	0	0	0	0	0	0	0	0		
Seaport	Buchanan	Vessel	0	0	0	0	0	0	0	0	0	0	0	0			
	Freeport of Monrovia	Vessel	0	0	0	0	0	0	0	0	0	0	0	0			
				149	75	0	147	77	132	10	3	4	4	143	224		

Summary of COVID-19 Contact Tracing in Response Counties

County	New Contacts Line listed	Cumulative Contacts	No. of Health Care Workers as Contacts	Cumulative no. of Health Care Workers as contacts	Contacts became a case	Cumulative contacts that became a case	Contacts Completed 14 Days	Cumulative Contacts Completing 14 Days	Contacts Under Follow-up	Contacts lost to Follow-up
Montserratado	0	5560	4	512	0	189	0	5492	23	3
Margibi	0	480	0	125	0	42	0	470	6	0
Grand Bassa	0	457	0	140	0	51	0	410	0	0
Sinoe	0	191	0	30	0	1	0	191	0	0
Lofa	0	758	0	103	0	34	0	726	0	0
Nimba	0	613	0	53	0	25	0	550	0	0
Bong	0	302	0	70	0	28	0	300	0	0
Gbarpolu	0	87	0	13	0	8	0	87	0	0
Grand Cape Mount	0	49	0	3	0	4	0	51	0	0
RiverGee	0	123	0	13	0	30	0	123	0	0
Maryland	0	208	0	28	0	19	0	136	0	0
Bomi	0	180	0	17	0	15	0	177	0	0
Rivercess	0	102	0	55	0	0	0	88	0	0
Grand Kru	0	333	0	131	0	17	0	330	0	0
Grand Gedeh	0	163	0	49	0	6	0	125	0	0
National	0	9606	4	1342	0	469	0	9256	29	3

Thank you for Listening