



Liberia COVID-19 Daily Sitrep 429 (May 18, 2021)

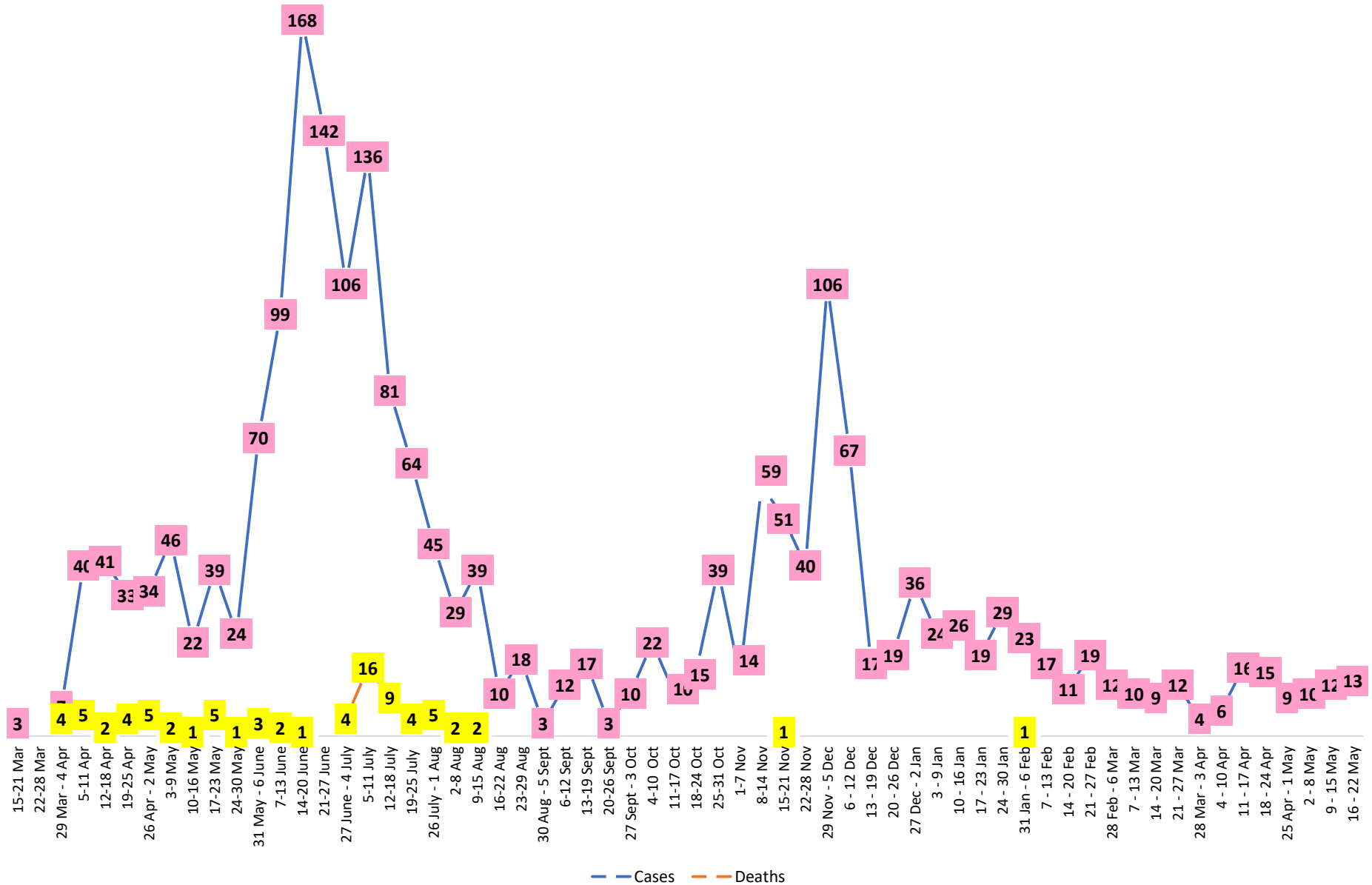
Summary of COVID-19 Cases by Reporting County, Liberia, 16 March 2020 – 18 May 2021

Bong	0	0	54
Gbarpolu	0	0	11
Grand Bassa	0	0	60
Grand Cape Mount	0	0	20
Grand Kru	0	0	18
Grand Gedeh	0	0	16
Lofa	0	0	45
Margibi	1	0	104
Maryland	0	0	34
Montserrado	9	0	1637
Nimba	1	0	73
Rivercess	0	0	5
River Gee	0	0	36
Sinoe	0	0	6
NATIONAL	11	0	2142

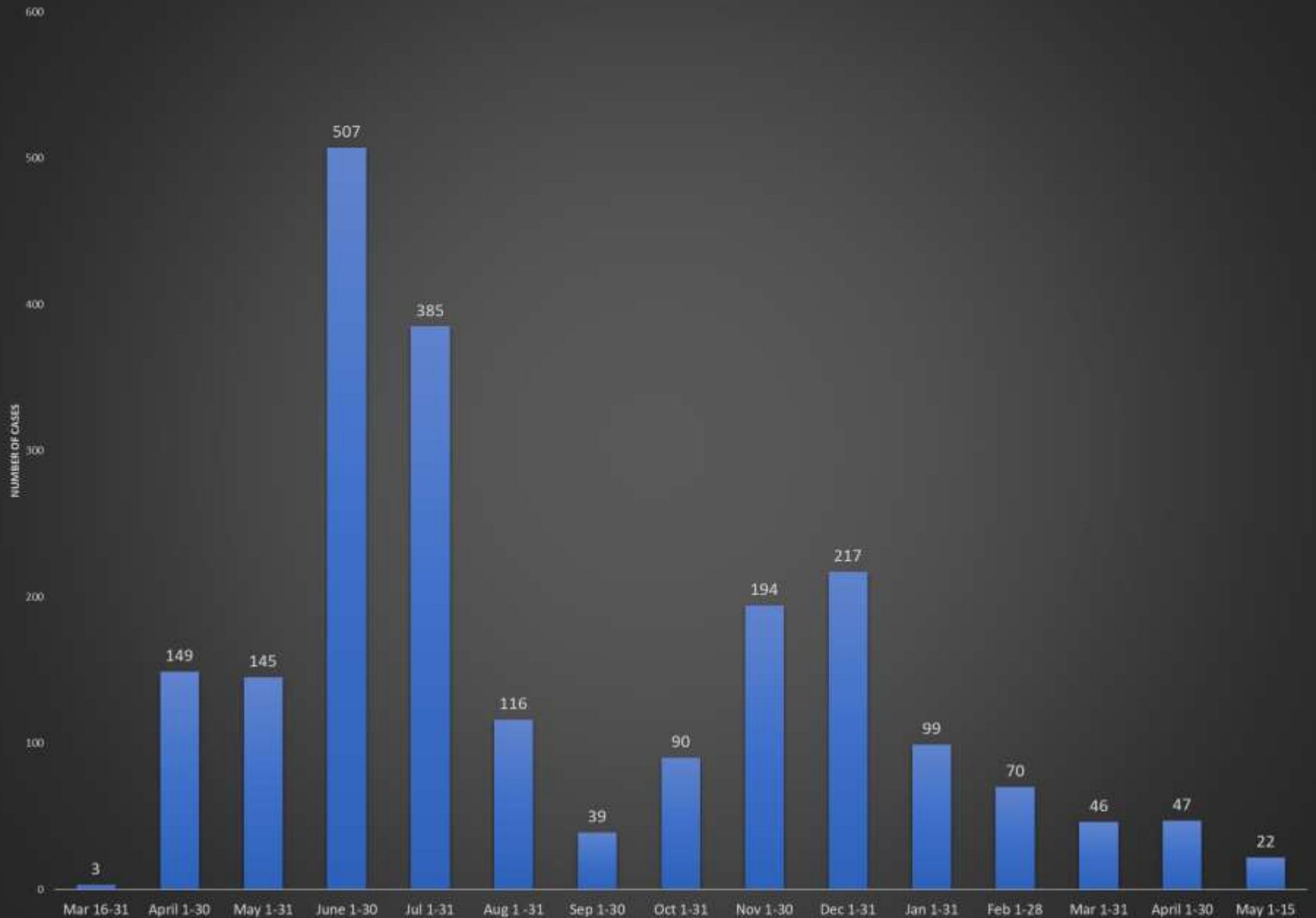
Demographic Breakdown (Gender & Age) of Confirmed COVID-19 Cases (16 March 2020 – 18 May 2021)

County	<15 years		15 - 34		35 - 54		55+		All ages		Total Confirmed
	M	F	M	F	M	F	M	F	M	F	
Bomi	2	2	3	5	7	3	0	1	12	11	23
Bong	3	1	4	6	20	9	8	3	35	19	54
Gbarpolu	1	2	0	2	4	1	1	0	6	5	11
Grand Bassa	11	2	9	11	13	8	4	2	37	23	60
Grand Cape Mount	0	0	11	0	8	0	1	0	20	0	20
Grand Kru	0	0	2	5	4	5	2	0	8	10	18
Grand Gedeh	0	1	1	2	7	3	2	0	10	6	16
Lofa	3	3	8	3	13	5	8	2	32	13	45
Margibi	6	4	15	13	28	12	16	10	65	39	104
Maryland	2	0	10	6	9	4	1	2	22	12	34
Montserrado	53	50	386	223	468	202	177	78	1084	553	1637
Nimba	1	4	15	10	28	6	5	4	49	24	73
Rivercess	0	0	2	3	0	0	0	0	2	3	5
River Gee	0	0	4	3	19	5	5	0	28	8	36
Sinoe	0	0	1	0	4	1	0	0	5	1	6
National	82	69	471	292	632	264	230	102	1415	727	2142

COVID-19 WEEKLY EPI-CURVE



Full and Partial Monthly Confirmed COVID-19 Cases in Liberia - Mar 16, 2020 - May 15, 2021. (n =2,129)



Summary of COVID-19 Deaths by Reporting County, Liberia, 16 March 2020 – 18 May 2021

County	ew Suspected Deaths	COVID-19 Treatment Unit	Total in COVID-19 Treatment Unit	Health Facility	Total in Health Facility	Community	Total in Community	Confirmed Deaths on Contact List	Cumulative Deaths
Bomi	0	0	0	0	1	0	0	0	1
Bong	0	0	0	0	4	0	1	0	5
Gbarpolu	0	0	0	0	2	0	0	0	2
Grand Bassa	0	0	0	0	0	0	0	0	0
Grand Cape Mount	0	0	0	0	0	0	0	0	0
Grand Gedeh	0	0	0	0	0	0	0	0	0
Grand Kru	0	0	0	0	0	0	0	0	0
Lofa	0	0	0	0	6	0	5	0	11
Maryland	0	0	0	0	2	0	0	0	2
Margibi	0	0	2	0	4	0	0	0	6
Montserrado	0	0	9	0	19	0	16	0	43
Nimba	0	0	2	0	5	0	4	0	11
Rivercess	0	0	0	0	1	0	1	0	2
River Gee	0	0	0	0	0	0	0	0	0
Sinoe	0	0	0	0	1	0	0	0	1

The Liberia Case Fatality rate (CFR) officially considered is for deaths that occurred among patients in care at the COVID-19 treatment units across the country. As of 30 December 2020 , a total of 13 deaths have been recorded CFR=1.3%. The country is however keeping active surveillance on community deaths and deaths in non COVID-19 treatment health units.

Daily and Cumulative Healthcare Worker (HCW) COVID-19 Cases and Deaths by County, Liberia, 16 March 2020 – 18 May 2021

County	DAILY REPORT						CUMULATIVE CASES (ALIVE & DEAD)	
	New Suspected & High Risk Cases (Alive)			New Suspect Death	Laboratory Confirmed Cases	Confirmed Cases on Contact List	Confirmed	Deaths
	Suspect	High Risk	Total					
Bomi	0	0	0	0	0	0	5	0
Bong	0	0	0	0	0	0	19	3
Gbarpolu	0	0	0	0	0	0	1	0
Grand Bassa	0	0	0	0	0	0	21	0
Grand Gedeh	0	0	0	0	0	0	2	0
Grand Kru	0	0	0	0	0	0	14	0
Lofa	0	0	0	0	0	0	16	0
Margibi	0	0	0	0	0	0	12	1
Maryland	0	0	0	0	0	0	16	0
Montserrado	0	0	0	0	0	0	88	1
Nimba	0	0	0	0	0	0	14	0
Rivercess	0	0	0	0	0	0	3	0
River Gee	0	0	0	0	0	0	10	0
Sinoe	0	0	0	0	0	0	3	0
NATIONAL	0	0	0	0	0	0	224	5

Cadre Cases and Deaths by Health Care Workers (16 March 2020 – 18 May 2021)

Health Care Worker Cadre	Montserratado		Margibi		Nimba		River Gee		Sinoe		Grand Kru		Gbarpolu		Bong		Lofa		Grand Bassa		Maryland		Bomi		Rivercess		Grand Gedeh		National (Total)	
	Cases	Deaths	Cases	Deaths	Cases	Deaths	Cases	Deaths	Cases	Deaths	Cases	Deaths	Cases	Deaths	Cases	Deaths	Cases	Deaths	Cases	Deaths	Cases	Deaths	Cases	Deaths	Cases	Deaths	Cases	Deaths	Cases	Deaths
Doctors	17	0	1	0	0	0	1	0	0	0	0	0	0	0	1	0	0	0	1	0	0	0	0	0	0	0	0	0	21	0
Pharmacists	4	0	0	0	0	0	0	0	0	0	0	0	0	0	0	0	0	0	0	0	0	0	0	0	0	0	0	4	0	
Nurses	23	1	2	0	2	0	5	0	0	0	2	0	1	1	12	1	8	0	5	0	1	0	1	0	0	0	0	62	3	
Nurse Aid	0	0	0	0	2	0	0	0	0	0	4	0	0	0	0	0	0	0	8	0	2	0	0	0	0	0	0	16	0	
Midwife	0	0	0	0	0	0	1	0	0	0	1	0	0	0	1	0	1	0	1	0	0	0	0	0	0	0	0	5	0	
Physician Assistants	8	0	1	0	1	0	1	0	0	0	1	0	0	0	0	0	1	0	1	0	0	0	0	0	0	0	0	14	0	
Lab Technician	9	0	1	0	2	0	0	0	1	0	1	0	0	0	0	0	2	0	0	0	10	0	0	0	3	0	0	29	0	
Environmental Health Technicians	5	0	0	0	0	0	0	0	0	0	0	0	0	0	0	0	0	0	0	0	0	0	0	0	0	0	0	5	0	
Dieticians	0	0	7	1	0	0	0	0	0	0	0	0	0	0	0	0	0	0	0	0	0	0	0	0	0	0	0	7	1	
Hospital Cleaner	1	0	0	0	0	0	0	0	0	0	1	0	0	0	1	0	0	0	1	0	2	0	0	0	0	0	0	6	0	
Others*	21	0	0	0	7	0	2	0	2	0	4	0	0	0	4	1	4	0	4	0	1	0	4	0	0	2	0	55	1	
Total:	88	1	12	1	14	0	10	0	3	0	14	0	1	1	19	2	16	0	21	0	16	0	5	0	3	0	2	0	224	5

***Others include the following:**

Radiologist, Microbiologist, Epidemiologist, Dispenser, Licensed Practical Nurse, Psychosocial worker, Hygienist, Logistician, Vaccinator, Ambulance Driver, Procurement Officer, Registrar, Accountant, Secretary, Hospital Administrator, Community Health Volunteer, GIS Specialist, EOC Coordinator

EPI-Curve of Confirmed Cases and Deaths

2142

2000

1500

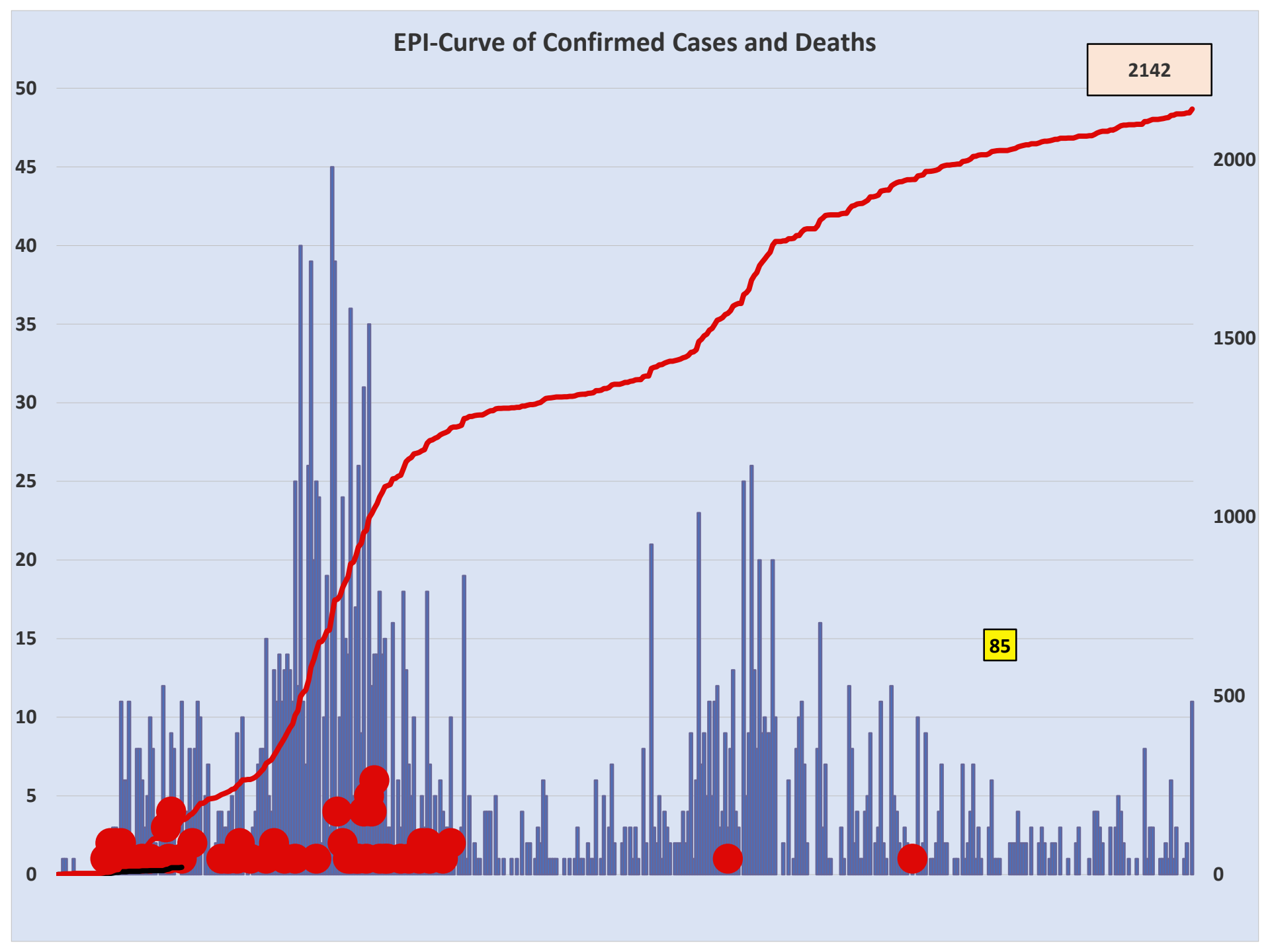
1000

500

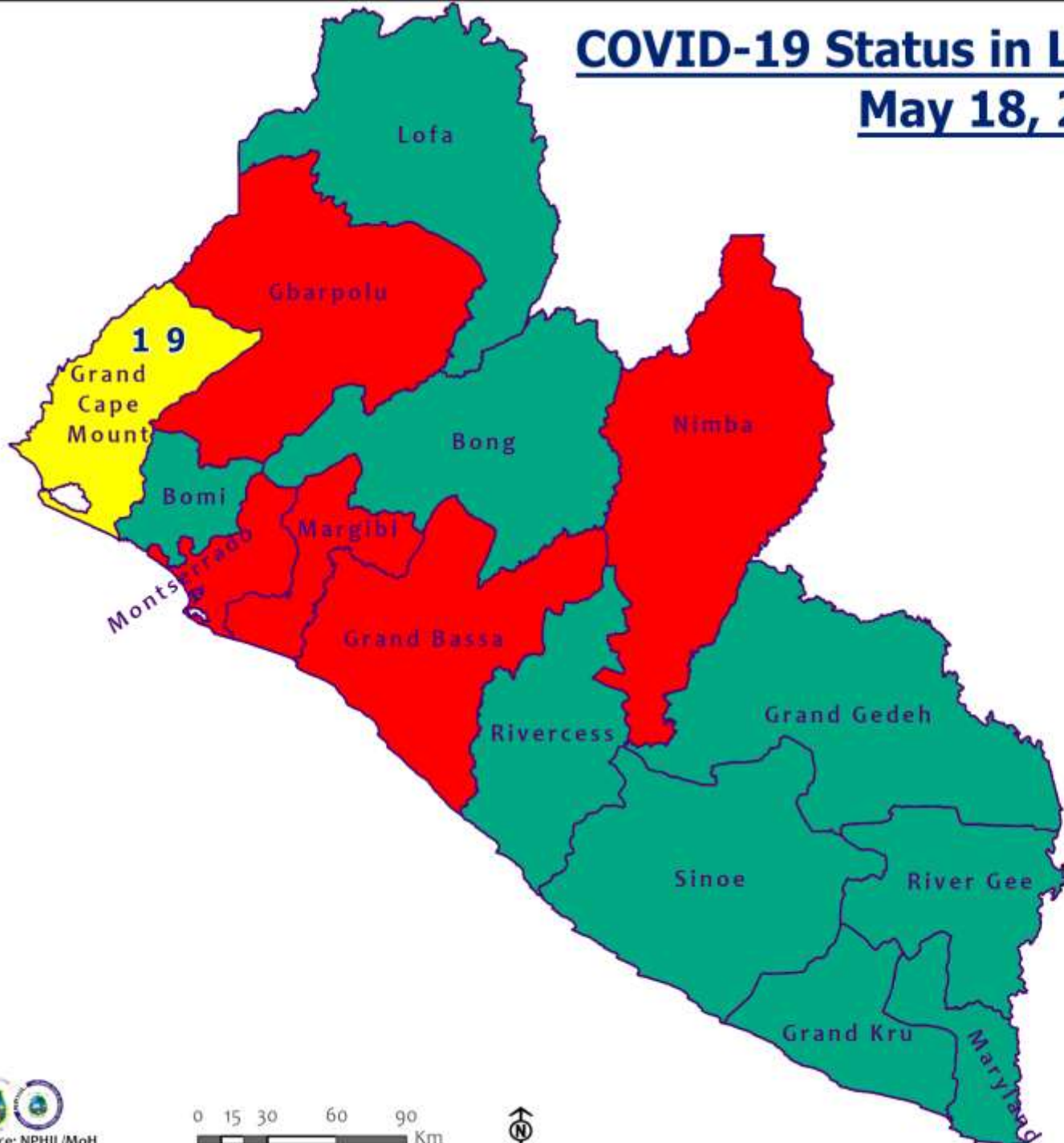
0

85

50
45
40
35
30
25
20
15
10
5
0



COVID-19 Status in Liberia by County May 18, 2021



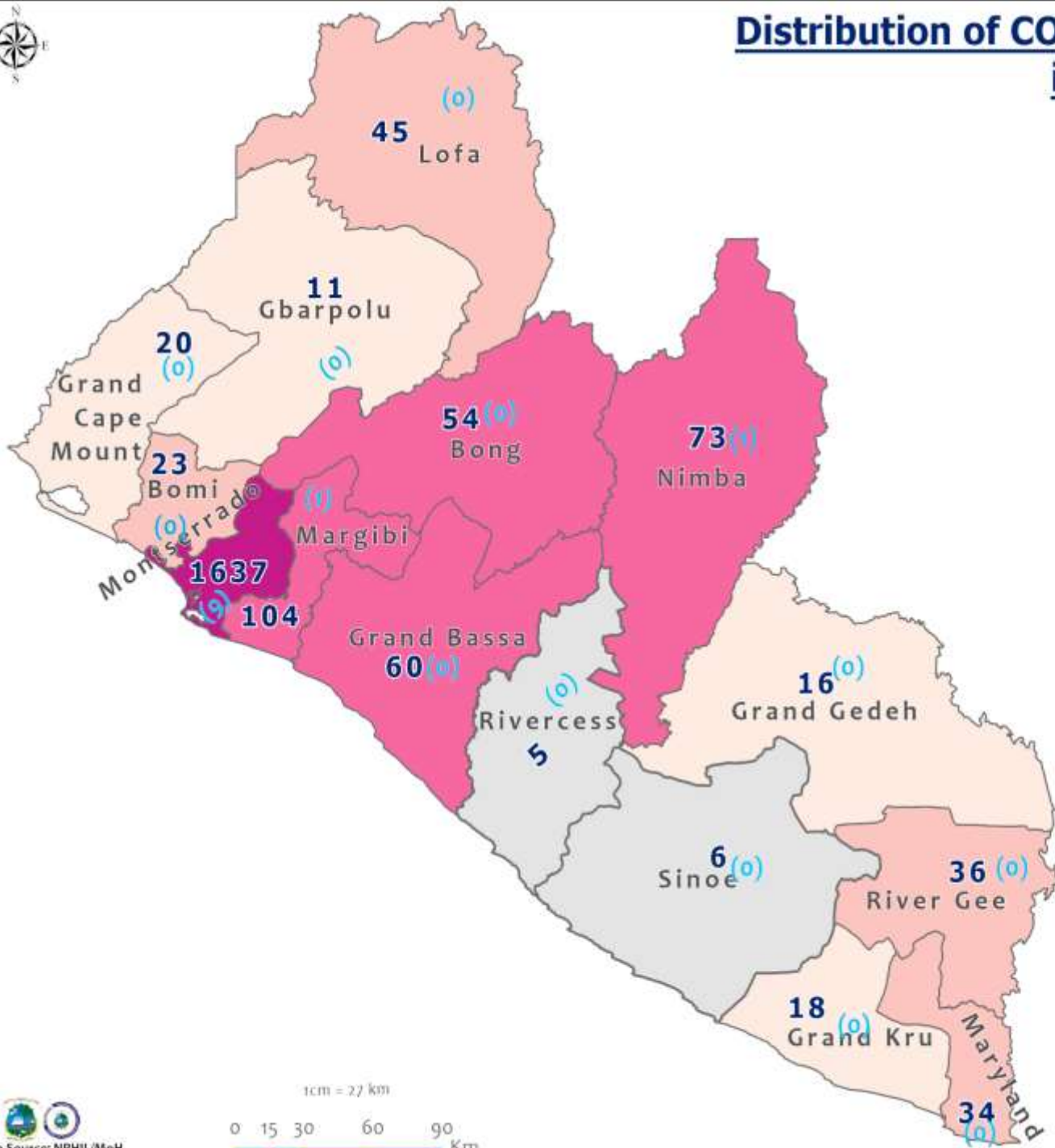
Legend

County Status

- Preparedness
- 28-Day Countdown
- Response



Distribution of COVID-19 Cases by County in Liberia - May 18, 2021



Total cumulative cases:

2142

Total new cases:

11

Legend

Number of Cases



Cumulative cases

New cases

0 (0)

1cm = 27 km

0 15 30 60 90 Km



COVID-19 Cases by District in Liberia - May 18, 2021



Total Cases: 2142

Affected Counties	Cumulative Cases
Montserrado	1637
Margibi	104
Nimba	73
Grand Bassa	60
Bong	54
Lofa	45
River Gee	36
Maryland	34
Bomi	23
Grand Cape Mount	20
Grand Kru	18
Grand Gedeh	16
Gbarpolu	11
Sinoe	6
Rivercess	5

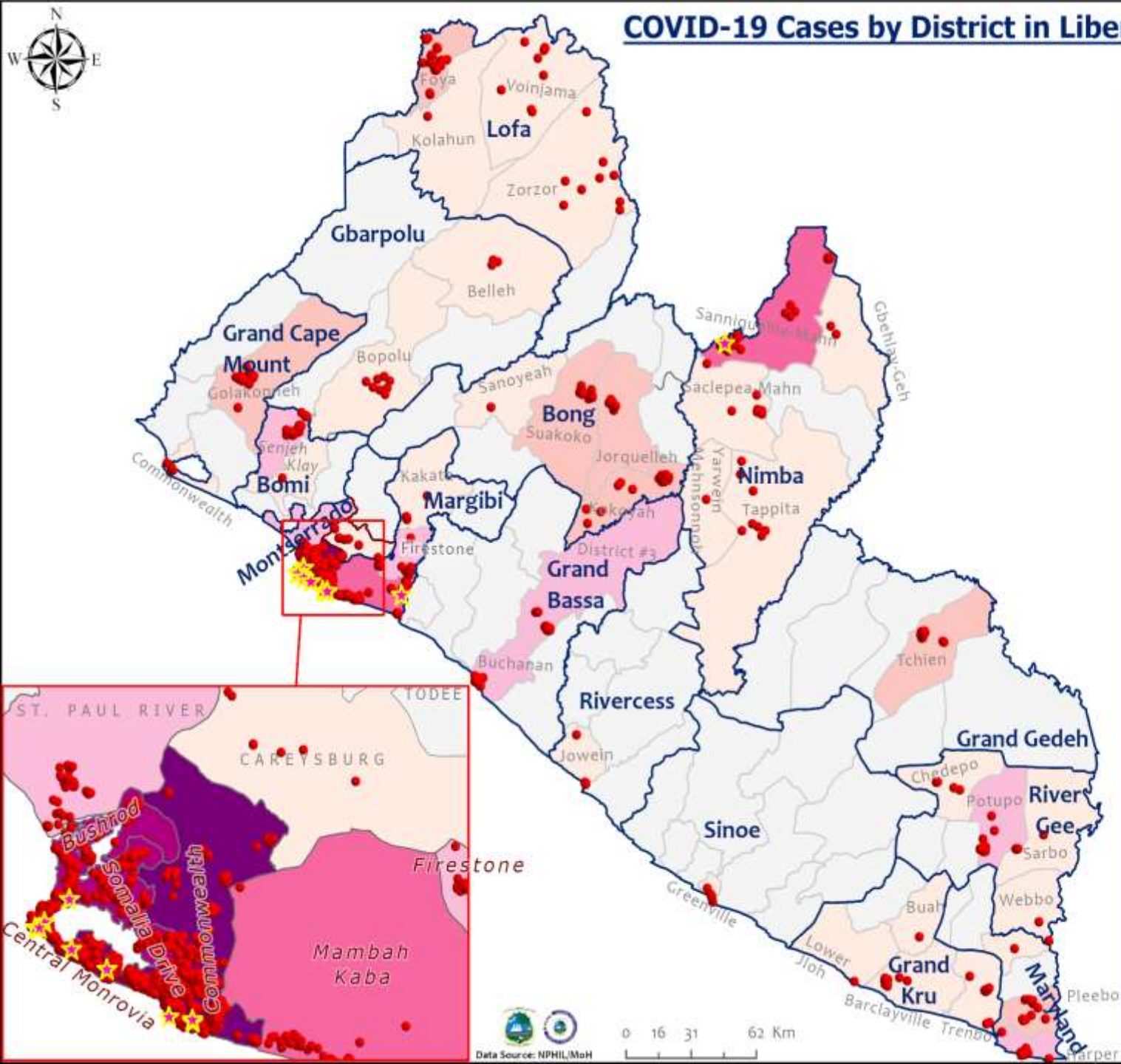
Legend

Case Status

- ★ New confirmed case
- Confirmed cases

Cases / District

- 0
- 1-10
- 11-20
- 21-50
- 51-100
- 101-200
- 201-600



Percent Distribution of COVID-19 Cases by Status in Liberia - 18 May 2021



Total Cases: 2142

Affected Counties	Cumulative Cases
Montserrado	1637
Margibi	104
Nimba	73
Grand Bassa	60
Bong	54
Lofa	45
River Gee	36
Maryland	34
Bomi	23
Grand Cape Mount	20
Grand Kru	18
Grand Gedeh	16
Gbarpolu	11
Sinoe	6
Rivercess	5

Legend

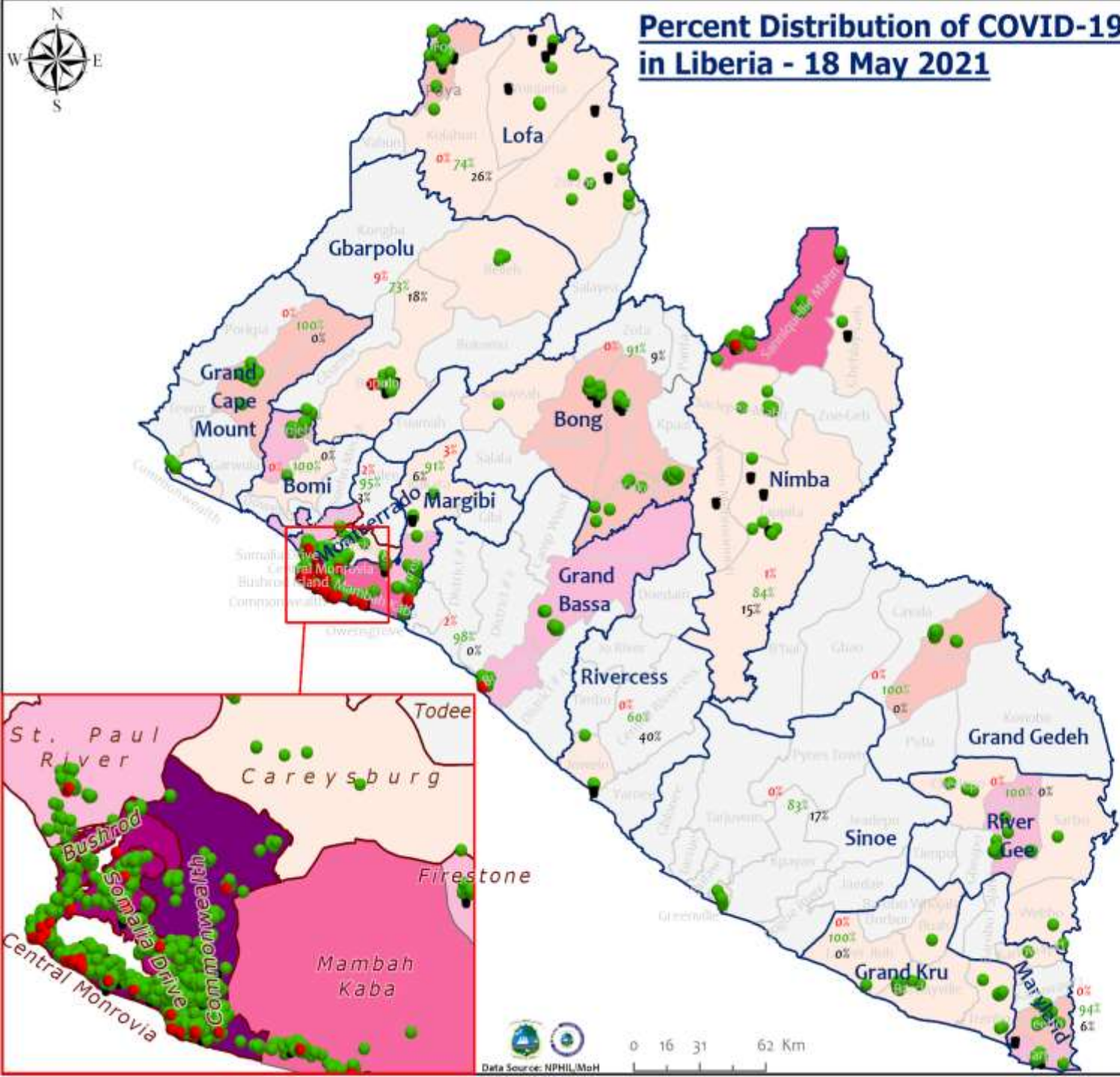
Case Status

- Active
- Recovered
- Dead

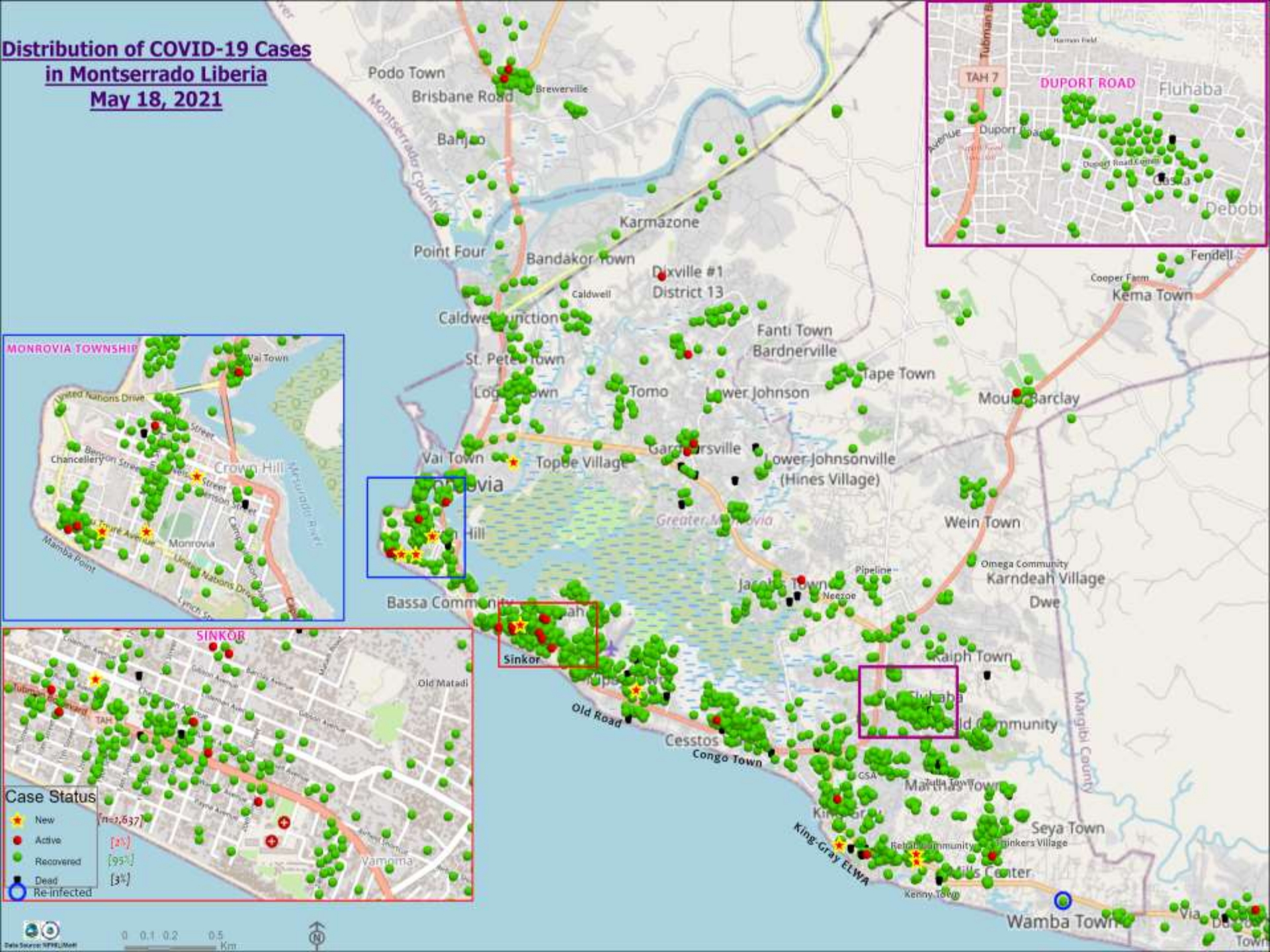
[2%]
[94%]
[4%]

Cases / District

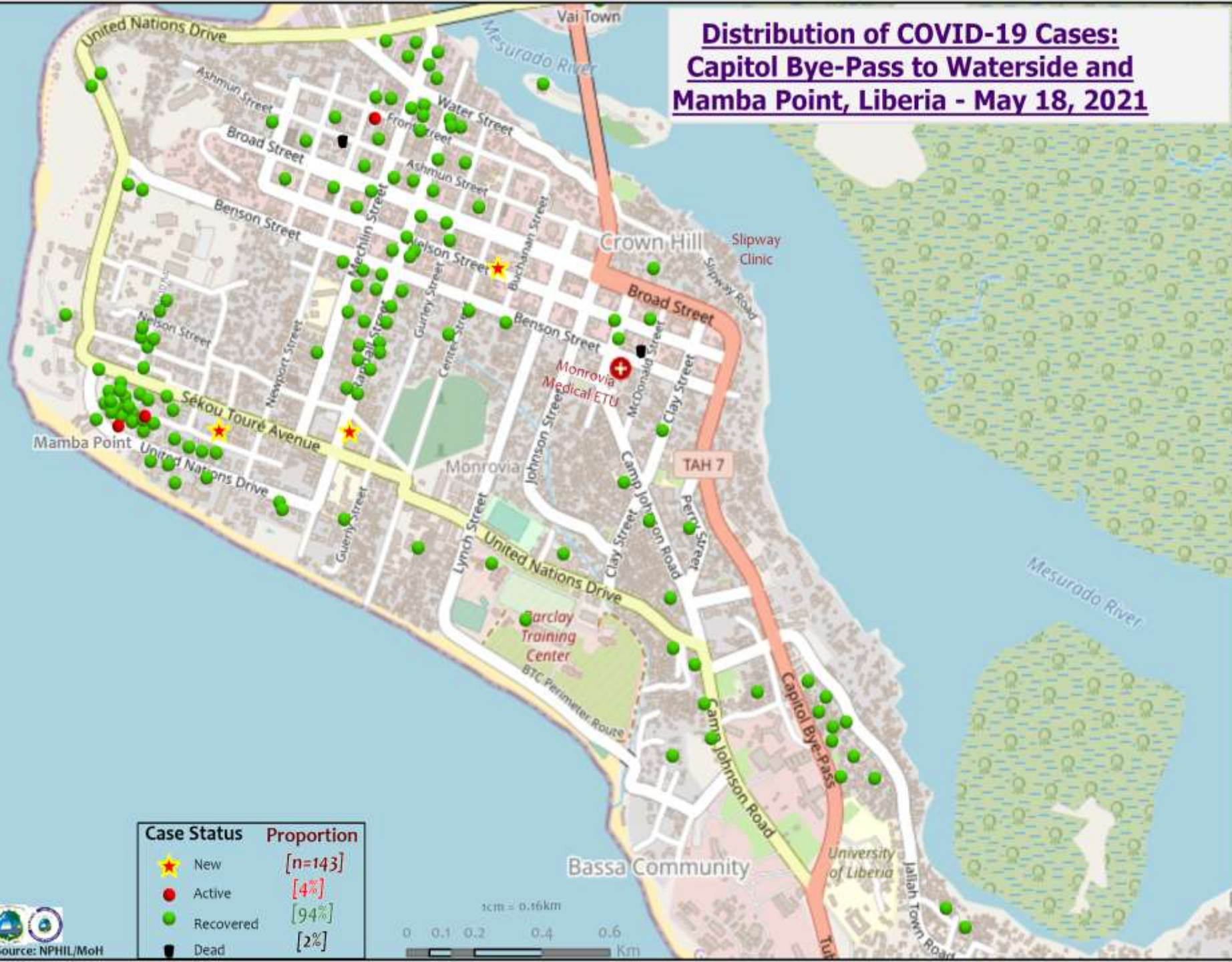
- 0
- 1-10
- 11-20
- 21-50
- 51-100
- 101-200
- 201-600



Distribution of COVID-19 Cases in Montserratado Liberia May 18, 2021

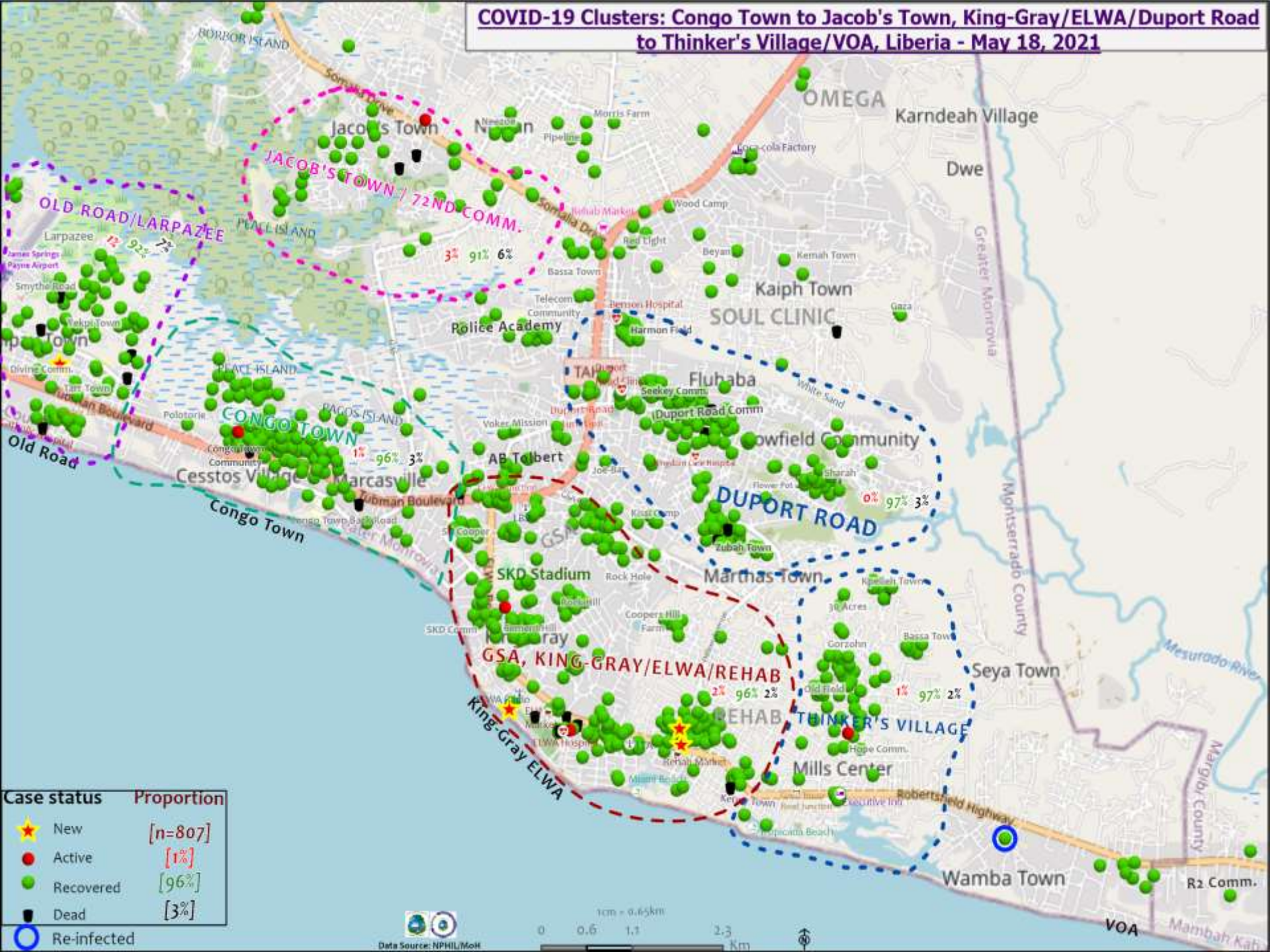


Distribution of COVID-19 Cases: Capitol Bye-Pass to Waterside and Mamba Point, Liberia - May 18, 2021



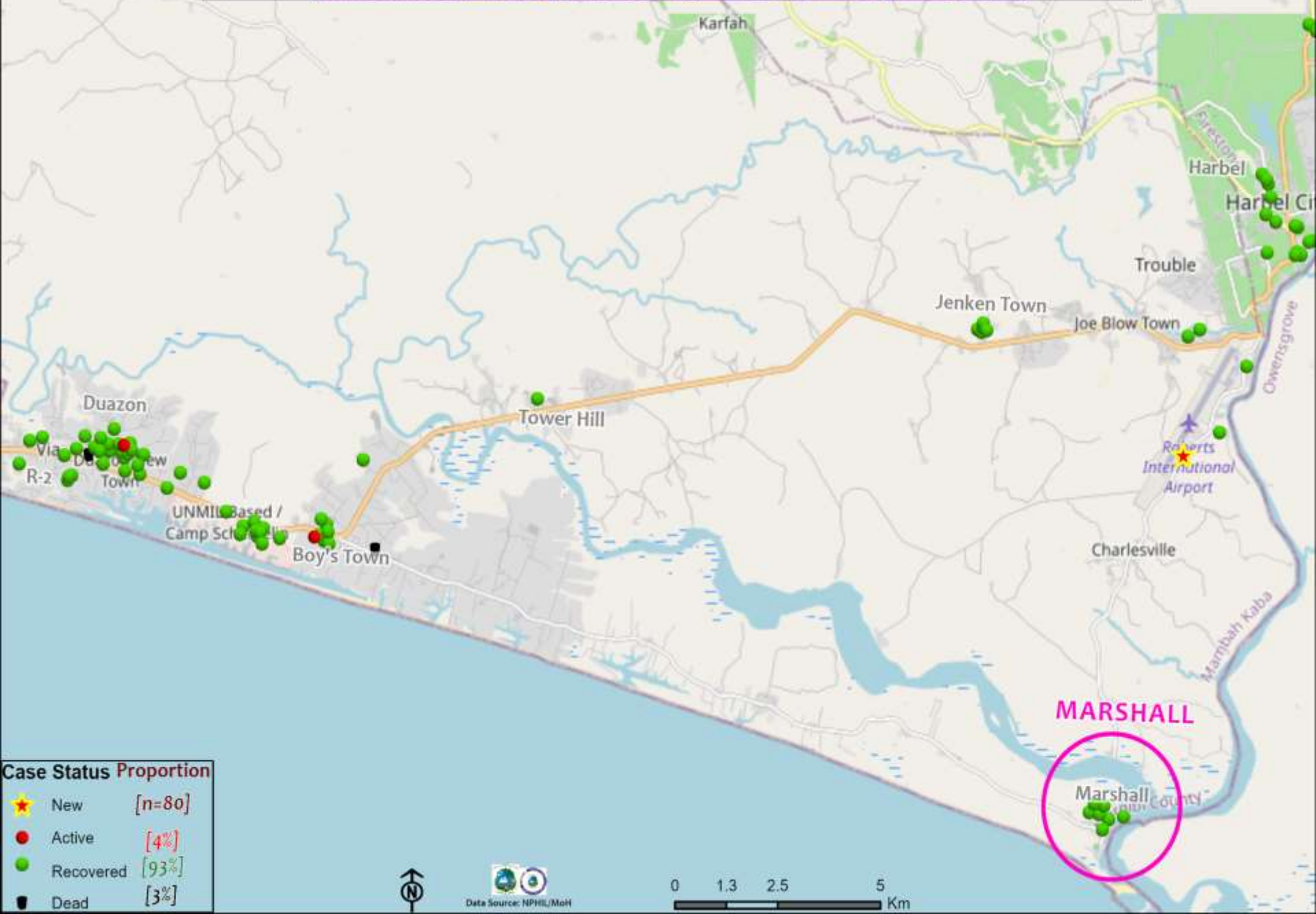
Case Status	Proportion
★ New	[n=143]
● Active	[4%]
● Recovered	[94%]
■ Dead	[2%]

COVID-19 Clusters: Congo Town to Jacob's Town, King-Gray/ELWA/Duport Road to Thinker's Village/VOA, Liberia - May 18, 2021



Case status	Proportion
★ New	[n=807]
● Active	[1%]
● Recovered	[96%]
■ Dead	[3%]
○ Re-infected	

COVID-19 Cases Distribution: Scheffelin Township, Marshall City and Harbel, Margibi County, Liberia - May 18, 2021



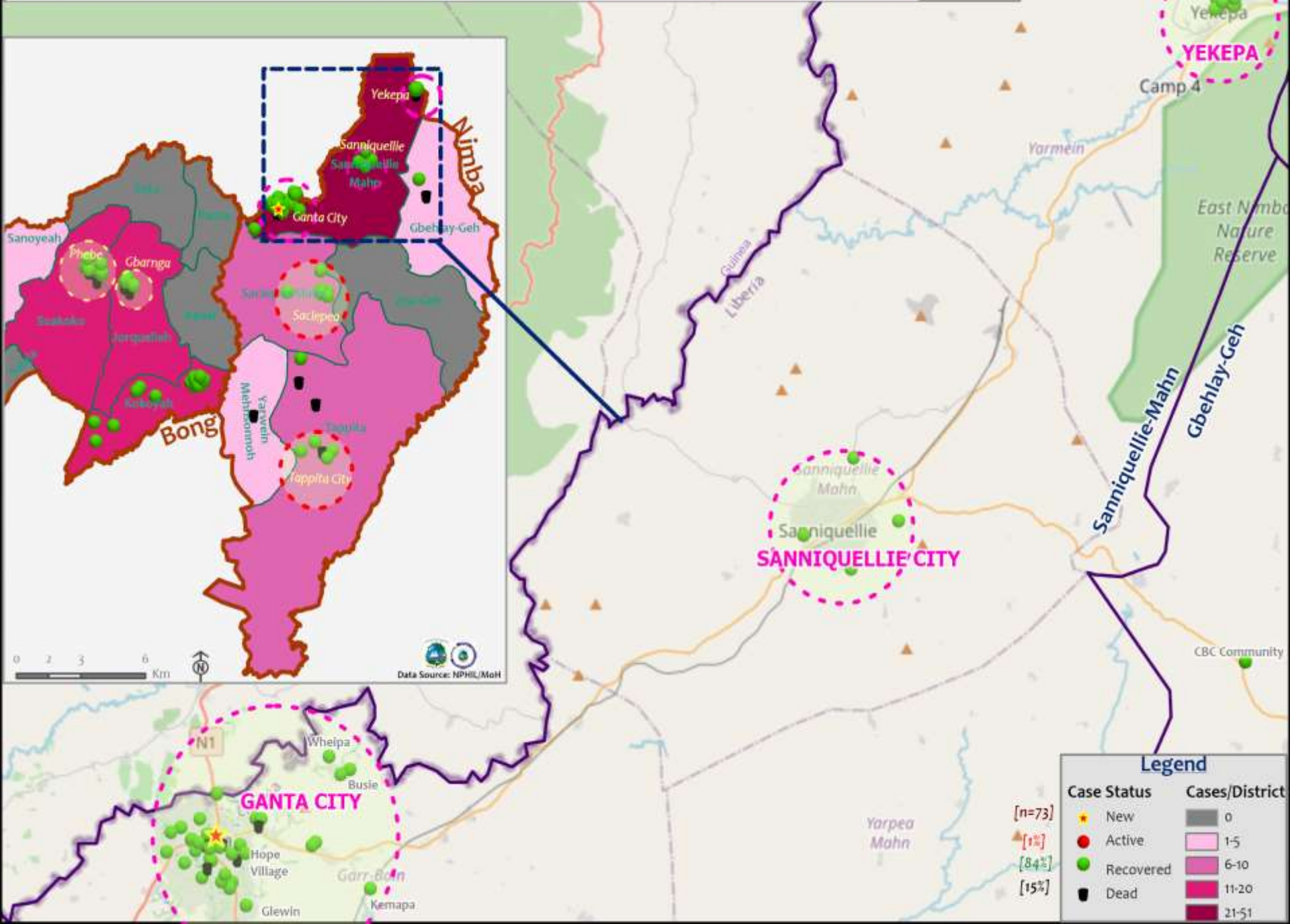
Case Status Proportion	
★ New	[n=80]
● Active	[4%]
● Recovered	[93%]
■ Dead	[3%]



MARSHALL

Marshall City

Distribution of COVID-19 Cases in Nimba, Liberia - May 18, 2021



Summary of confirmed, recovered, active, and dead cases by reporting counties, Liberia, 16 March 2020 – 18 May 2021

County	Confirmed Cases		Recovered Cases		Active Cases	Dead Cases	
	New	Cum	New	Cum		New	Cum
Bomi	0	23	0	22	0	0	1
Bong	0	54	0	49	0	0	5
Gbarpolu	0	11	0	8	1	0	2
Grand Bassa	0	60	0	59	1	0	0
Grand Cape Mount	0	20	0	20	0	0	0
Grand Gedeh	0	16	0	16	0	0	0
Grand Kru	0	18	0	18	0	0	0
Lofa	0	45	0	34	0	0	11
Margibi	1	104	0	95	3	0	6
Maryland	0	34	0	32	0	0	2
Montserrado	9	1637	0	1564	29	0	44
Nimba	1	73	0	61	1	0	11
Rivercess	0	5	0	3	0	0	2
River Gee	0	36	0	36	0	0	0
Sinoe	0	6	0	5	0	0	1
National	11	2142	0	2022	35	0	85

Daily Summary Report at Treatment Units – 18 May 2021

Treatment Facility Name	New Admissions	Cumulative Admission	Daily Discharges	Cumulative Recoveries	Daily Deaths	Cumulative Deaths	Currently in treatment
Bomi LGH Treatment Unit	0	18	0	18	0	0	0
Bong Treatment Unit	0	26	0	26	0	0	0
Chief Jallahlone Hospital Treatment Unit	0	1	0	1	0	0	0
Grand Bassa Arcelor Mittal Treatment Unit	0	6	0	6	0	0	0
Grand Bassa LGH Treatment Unit	0	3	0	3	0	0	0
LAC Treatment Unit	0	42	0	42	0	0	0
Starbase Treatment Unit	0	648	0	637	0	9	2
Union Treatment Center	0	78	0	78	0	0	0
Duside Hospital Treatment Unit	0	42	0	40	0	2	0
Martha Tubman Hospital Treatment Unit	0	13	0	13	0	0	0
Rally Time Treatment Unit	0	4	0	4	0	0	0
Sasstown Treatment Unit	0	7	0	7	0	0	0
Behwan Treatment Unit	0	7	0	7	0	0	0
FJ Grante Hospital Treatment Unit	0	5	0	5	0	0	0
JJ Dossen Hospital Treatment Unit	0	9	0	9	0	0	0
Pleebo Health Center Treatment Unit	0	21	0	21	0	0	0
Tellewoyan Memorial Hospital Treatment Unit	0	13	0	13	0	0	0
Foya Borma Hospital Treatment Unit	0	12	0	12	0	0	0
Zorzor Treatment Unit	0	6	0	6	0	0	0
Robert Sport Treatment Unit	0	1	0	1	0	0	0
Ganta United Methodist Hospital Treatment Unit	0	1	0	1	0	0	0
Arcelor Mittal Yekepa Treatment Unit	0	12	0	12	0	0	0
Jackson F. Doe Treatment Unit	0	5	0	4	0	1	0
St. Frances Hospital Treatment Unit	0	2	0	2	0	0	0
Fish Town Hospital Treatment Unit	0	36	0	36	0	0	0
E&J Medical Center Treatment Unit	0	20	0	19	0	1	0
TOTAL	0	1038	0	1023	0	13	2

3 of the 5 persons admitted at Starbase tested negative for Covid-19 but are contacts of the positive cases

Home-Base Care of COVID-19 Cases

County	New Admissions	Currently in Admissions	No. Followed-up (In-person/Phone)	Cumulative Admissions	New Recoveries	Cumulative Recoveries	Referrals to TU	Cumulative Referrals to TU	New Death	Cumulative Deaths
Montserrat	0	7	7	249	6	234	0	8	0	0
Grand Bassa				0						
Gbarpolu				0						
Margibi				0						
Total:	0	7	7	249	6	234	0	8	0	0

Laboratory Samples Evaluated – 18 May 2021

County	Sample Evaluated	New Positive	Repeat Positive	Initial Negative	Repeat Test Negative	Pending Lab Result
Bong	9	0	0	9	0	0
Grand Bassa	2	0	0	2	0	0
Grand Cape Mount	7	0	0	7	0	0
Margibi	26	1	0	22	0	3
Montserrado	355	9	0	327	0	19
Nimba	8	1	0	5	0	2
TOTAL	407	11	0	372	0	24
Outgoing Traveler						
Outgoing Traveler	61	10	0	35	0	16
Incoming Traveler						
Incoming Traveler	346	1	0	337	0	8
Voluntary						
Voluntary	0	0	0	0	0	0
NRL						
NRL	405	11	0	370	0	24
UN Clinic Lab						
UN Clinic Lab	2	0	0	2	0	0

Incoming Travelers Testing Positive for COVID-19 (May 18, 2021)

Country of embarkment	Cases
Chad	1
Total	1

Nationality	Cases
American	1
Total	1

Occupation	Cases
Teacher	1
Total	1

Flight	Cases
ASKY	1
Total	1

Incoming Travelers Testing Positive for COVID-19 (May 2021)

Country of embarkment	Cases
USA	3
Ghana	2
Australia	1
Pakistan	1
Nigeria	1
UAE	1
Lebanon	1
Canada	1
India	1
Chad	1
Total	13

Occupation	Cases
Business	4
Student	2
PFM Consultant	1
Physician	1
Diplomat	1
Nurse Aide	1
Retired	1
Geologist	1
Teacher	1
Total	13

Nationality	Cases
American	4
Liberian	2
Indian	2
Pakistani	1
Nigerian	1
Lebanese	1
Canadian	1
Australian	1
Total	13

Flight	Cases
ASKY	4
Kenya Airways	3
SN Brussels	3
Air France	2
AWA	1
Total	13

Summary of COVID-19 Daily PoE in Response Counties (18 May 2021)

Date of travel	Type of PoE	Point of Entry Name	Type of conveyance	# of Travelers Arrival	# of Travelers departure	# of travelers with elevated temp	Total Travelers screened		Total Passengers tested on Arrival	Total Foreign diplomat Exempted	# of Children under 5 years not tested	Passengers staying less than 5 days exempted	Total passengers in transit	Total Passengers from Indian	Total passports collected	Total # of Travelers		
							Male	Female										
18-May	Airport		Air Morac	0	0	0	0	0	0	0	0	0	0	0	0	0		
			Brussels	57	0	0	34	23	54	0	1	0	0	0	0	1	57	
			AWA	21	10	0	19	12	18	0	0	0	0	0	0	3	31	
			Air France	20	39	0	43	16	20	0	0	0	0	0	2	0	59	
			Air Cote D'Ivoire	36	30	0	36	30	33	3	0	0	0	0	0	5	66	
			DHL	0	0	0	0	0	0	0	0	0	0	0	0	0	0	0
			Kenya	0	0	0	0	0	0	0	0	0	0	0	0	0	0	0
			Asky	0	54	0	32	22	0	2	1	0	0	0	0	0	54	
			Others (Special flight)	0	0	0	0	0	0	0	0	0	0	0	0	0	0	0
	James Spriggs Payne Airport	Flight	16	5	0	17	4	0	0	0	0	0	0	0	0	21		
	Land	Ganta Main	Land	16	34	0	29	21	0	0	0	0	0	0	0	0	50	
		Yekepa	Land	49	8	0	23	34	0	0	0	0	0	0	0	57		
		Lehgain	Land	0	0	0	0	0	0	0	0	0	0	0	0	0		
		Loguatuo	Land	6	12	0	4	14	0	0	0	0	0	0	0	18		
		Go-Yeelah	Land	10	14	0	9	15	0	0	0	0	0	0	0	24		
		Gahnpa	Land	16	4	0	12	8	0	0	0	0	0	0	0	20		
		Wehyipa	Land	7	9	0	6	10	0	0	0	0	0	0	0	16		
		Bo Water Side	Land	78	95	0	54	119	0	0	0	0	0	0	0	173		
	Seaport	Buchanan	Vessel	0	0	0	0	0	0	0	0	0	0	0	0	0		
Freeport of Monrovia		Vessel	41	0	0	41	0	0	0	0	0	0	0	0	41			
Total:				373	314	0	359	328	125	5	2	0	0	2	9	687		

Summary of COVID-19 Contact Tracing in Response Counties

County	New Contacts Line listed	Cumulative Contacts	No. of Health Care Workers as Contacts	Cumulative no. of Health Care Workers as contacts	Contacts became a case	Cumulative contacts that became a case	Contacts Completed 14 Days	Cumulative Contacts Completing 14 Days	Contacts Under Follow-up	Contacts lost to Follow-up
Montserratado	0	5560	0	508	0	189	0	5492	6	3
Margibi	0	480	0	125	0	42	0	470	0	0
Grand Bassa	0	457	0	140	0	51	0	410	4	0
Sinoe	0	191	0	30	0	1	0	191	0	0
Lofa	0	758	0	103	0	34	0	726	0	0
Nimba	0	613	0	53	0	25	0	550	0	0
Bong	0	302	0	70	0	28	0	300	0	0
Gbarpolu	0	87	0	13	0	8	0	87	0	0
Grand Cape Mount	0	49	0	3	0	4	0	51	0	0
RiverGee	0	123	0	13	0	30	0	123	0	0
Maryland	0	208	0	28	0	19	0	136	0	0
Bomi	0	180	0	17	0	15	0	177	0	0
Rivercess	0	102	0	55	0	0	0	88	0	0
Grand Kru	0	333	0	131	0	17	0	330	0	0
Grand Gedeh	0	163	0	49	0	6	0	125	0	0
National	0	9606	0	1338	0	469	0	9256	10	3

Thank you for Listening