



# **Liberia COVID-19 Daily Sitrep 428 (May 17, 2021)**

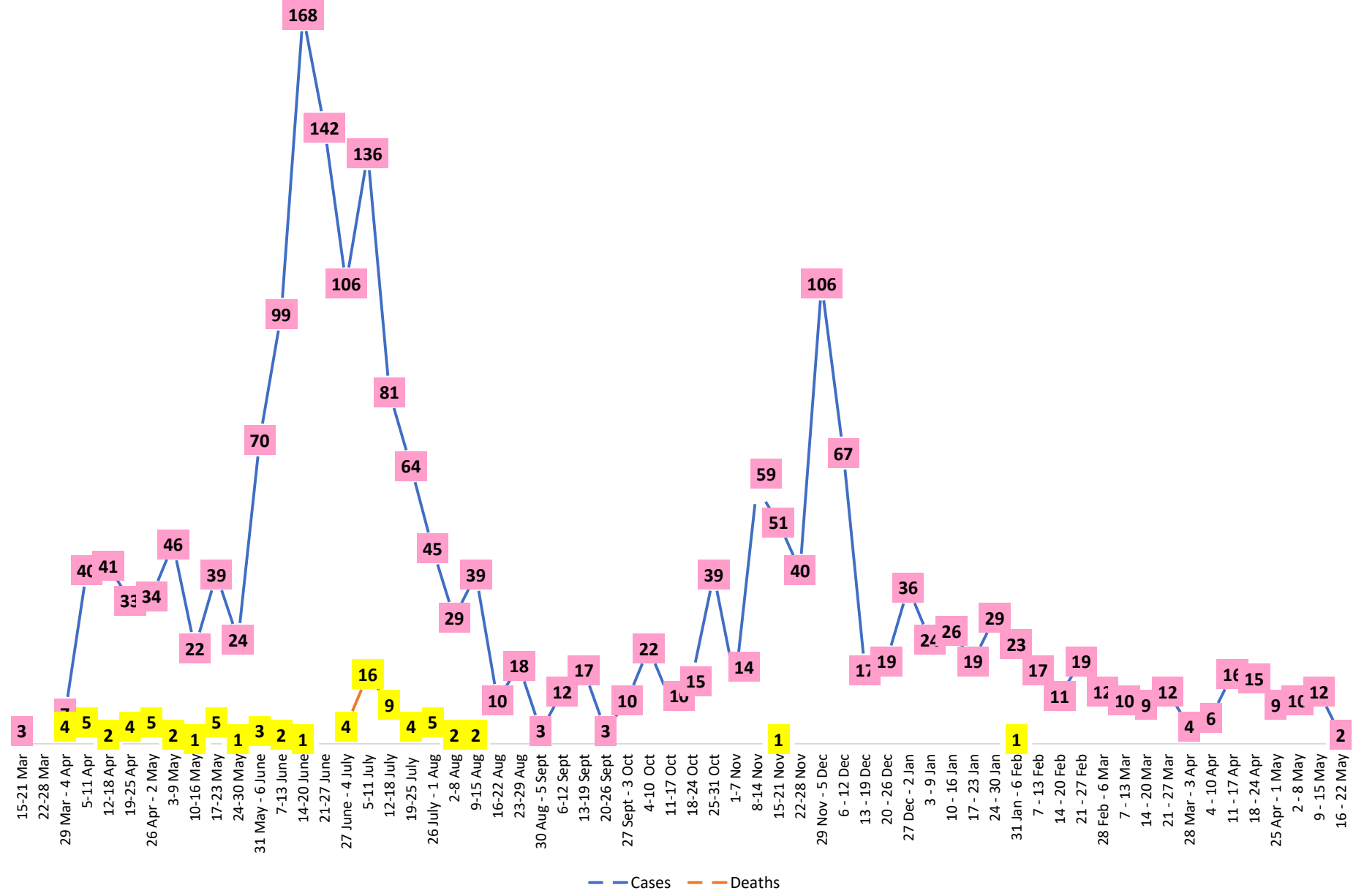
## Summary of COVID-19 Cases by Reporting County, Liberia, 16 March 2020 – 17 May 2021

|                         |          |          |             |
|-------------------------|----------|----------|-------------|
| <b>Bong</b>             | 0        | 0        | 54          |
| <b>Gbarpolu</b>         | 0        | 0        | 11          |
| <b>Grand Bassa</b>      | 0        | 0        | 60          |
| <b>Grand Cape Mount</b> | 0        | 0        | 20          |
| <b>Grand Kru</b>        | 0        | 0        | 18          |
| <b>Grand Gedeh</b>      | 0        | 0        | 16          |
| <b>Lofa</b>             | 0        | 0        | 45          |
| <b>Margibi</b>          | 0        | 0        | 103         |
| <b>Maryland</b>         | 0        | 0        | 34          |
| <b>Montserrado</b>      | <b>0</b> | <b>0</b> | <b>1628</b> |
| <b>Nimba</b>            | 0        | 0        | 72          |
| <b>Rivercess</b>        | 0        | 0        | 5           |
| <b>River Gee</b>        | 0        | 0        | 36          |
| <b>Sinoe</b>            | 0        | 0        | 6           |
| <b>NATIONAL</b>         | <b>0</b> | <b>0</b> | <b>2131</b> |

# Demographic Breakdown (Gender & Age) of Confirmed COVID-19 Cases (16 March 2020 – 17 May 2021)

| County             | <15 years |           | 15 - 34    |            | 35 - 54    |            | 55+        |            | All ages    |            | Total Confirmed |
|--------------------|-----------|-----------|------------|------------|------------|------------|------------|------------|-------------|------------|-----------------|
|                    | M         | F         | M          | F          | M          | F          | M          | F          | M           | F          |                 |
| Bomi               | 2         | 2         | 3          | 5          | 7          | 3          | 0          | 1          | 12          | 11         | 23              |
| Bong               | 3         | 1         | 4          | 6          | 20         | 9          | 8          | 3          | 35          | 19         | 54              |
| Gbarpolu           | 1         | 2         | 0          | 2          | 4          | 1          | 1          | 0          | 6           | 5          | 11              |
| Grand Bassa        | 11        | 2         | 9          | 11         | 13         | 8          | 4          | 2          | 37          | 23         | 60              |
| Grand Cape Mount   | 0         | 0         | 11         | 0          | 8          | 0          | 1          | 0          | 20          | 0          | 20              |
| Grand Kru          | 0         | 0         | 2          | 5          | 4          | 5          | 2          | 0          | 8           | 10         | 18              |
| Grand Gedeh        | 0         | 1         | 1          | 2          | 7          | 3          | 2          | 0          | 10          | 6          | 16              |
| Lofa               | 3         | 3         | 8          | 3          | 13         | 5          | 8          | 2          | 32          | 13         | 45              |
| Margibi            | 6         | 4         | 15         | 13         | 28         | 12         | 16         | 9          | 65          | 38         | 103             |
| Maryland           | 2         | 0         | 10         | 6          | 9          | 4          | 1          | 2          | 22          | 12         | 34              |
| <b>Montserrado</b> | 53        | 50        | 385        | 223        | 465        | 199        | 175        | 78         | 1078        | 550        | 1628            |
| Nimba              | 1         | 4         | 15         | 10         | 28         | 6          | 5          | 3          | 49          | 23         | 72              |
| Rivercess          | 0         | 0         | 2          | 3          | 0          | 0          | 0          | 0          | 2           | 3          | 5               |
| River Gee          | 0         | 0         | 4          | 3          | 19         | 5          | 5          | 0          | 28          | 8          | 36              |
| Sinoe              | 0         | 0         | 1          | 0          | 4          | 1          | 0          | 0          | 5           | 1          | 6               |
| <b>National</b>    | <b>82</b> | <b>69</b> | <b>470</b> | <b>292</b> | <b>629</b> | <b>261</b> | <b>228</b> | <b>100</b> | <b>1409</b> | <b>722</b> | <b>2131</b>     |

# COVID-19 WEEKLY EPI-CURVE



# Summary of COVID-19 Deaths by Reporting County, Liberia, 16 March 2020 – 17 May 2021

| County           | ew Suspected Deaths | COVID-19 Treatment Unit | Total in COVID-19 Treatment Unit | Health Facility | Total in Health Facility | Community | Total in Community | Confirmed Deaths on Contact List | Cumulative Deaths |
|------------------|---------------------|-------------------------|----------------------------------|-----------------|--------------------------|-----------|--------------------|----------------------------------|-------------------|
| Bomi             | 0                   | 0                       | 0                                | 0               | 1                        | 0         | 0                  | 0                                | 1                 |
| Bong             | 0                   | 0                       | 0                                | 0               | 4                        | 0         | 1                  | 0                                | 5                 |
| Gbarpolu         | 0                   | 0                       | 0                                | 0               | 2                        | 0         | 0                  | 0                                | 2                 |
| Grand Bassa      | 0                   | 0                       | 0                                | 0               | 0                        | 0         | 0                  | 0                                | 0                 |
| Grand Cape Mount | 0                   | 0                       | 0                                | 0               | 0                        | 0         | 0                  | 0                                | 0                 |
| Grand Gedeh      | 0                   | 0                       | 0                                | 0               | 0                        | 0         | 0                  | 0                                | 0                 |
| Grand Kru        | 0                   | 0                       | 0                                | 0               | 0                        | 0         | 0                  | 0                                | 0                 |
| Lofa             | 0                   | 0                       | 0                                | 0               | 6                        | 0         | 5                  | 0                                | 11                |
| Maryland         | 0                   | 0                       | 0                                | 0               | 2                        | 0         | 0                  | 0                                | 2                 |
| Margibi          | 0                   | 0                       | 2                                | 0               | 4                        | 0         | 0                  | 0                                | 6                 |
| Montserrado      | 0                   | 0                       | 9                                | 0               | 19                       | 0         | 16                 | 0                                | 43                |
| Nimba            | 0                   | 0                       | 2                                | 0               | 5                        | 0         | 4                  | 0                                | 11                |
| Rivercess        | 0                   | 0                       | 0                                | 0               | 1                        | 0         | 1                  | 0                                | 2                 |
| River Gee        | 0                   | 0                       | 0                                | 0               | 0                        | 0         | 0                  | 0                                | 0                 |
| Sinoe            | 0                   | 0                       | 0                                | 0               | 1                        | 0         | 0                  | 0                                | 1                 |

The Liberia Case Fatality rate (CFR) officially considered is for deaths that occurred among patients in care at the COVID-19 treatment units across the country. As of 30 December 2020 , a total of 13 deaths have been recorded CFR=1.3%. The country is however keeping active surveillance on community deaths and deaths in non COVID-19 treatment health units.

# Daily and Cumulative Healthcare Worker (HCW) COVID-19 Cases and Deaths by County, Liberia, 16 March 2020 – 17 May 2021

| County          | DAILY REPORT                            |           |          |                   |                            |                                 | CUMULATIVE CASES (ALIVE & DEAD) |          |
|-----------------|---|-----------|----------|-------------------|----------------------------|---------------------------------|---------------------------------|----------|
|                 | New Suspected & High Risk Cases (Alive) |           |          | New Suspect Death | Laboratory Confirmed Cases | Confirmed Cases on Contact List | Confirmed                       | Deaths   |
|                 | Suspect                                 | High Risk | Total    |                   |                            |                                 |                                 |          |
| Bomi            | 0                                       | 0         | 0        | 0                 | 0                          | 0                               | 5                               | 0        |
| Bong            | 0                                       | 0         | 0        | 0                 | 0                          | 0                               | 19                              | 3        |
| Gbarpolu        | 0                                       | 0         | 0        | 0                 | 0                          | 0                               | 1                               | 0        |
| Grand Bassa     | 0                                       | 0         | 0        | 0                 | 0                          | 0                               | 21                              | 0        |
| Grand Gedeh     | 0                                       | 0         | 0        | 0                 | 0                          | 0                               | 2                               | 0        |
| Grand Kru       | 0                                       | 0         | 0        | 0                 | 0                          | 0                               | 14                              | 0        |
| Lofa            | 0                                       | 0         | 0        | 0                 | 0                          | 0                               | 16                              | 0        |
| Margibi         | 0                                       | 0         | 0        | 0                 | 0                          | 0                               | 12                              | 1        |
| Maryland        | 0                                       | 0         | 0        | 0                 | 0                          | 0                               | 16                              | 0        |
| Montserrado     | 0                                       | 0         | 0        | 0                 | 0                          | 0                               | 88                              | 1        |
| Nimba           | 0                                       | 0         | 0        | 0                 | 0                          | 0                               | 14                              | 0        |
| Rivercess       | 0                                       | 0         | 0        | 0                 | 0                          | 0                               | 3                               | 0        |
| River Gee       | 0                                       | 0         | 0        | 0                 | 0                          | 0                               | 10                              | 0        |
| Sinoe           | 0                                       | 0         | 0        | 0                 | 0                          | 0                               | 3                               | 0        |
| <b>NATIONAL</b> | <b>0</b>                                | <b>0</b>  | <b>0</b> | <b>0</b>          | <b>0</b>                   | <b>0</b>                        | <b>224</b>                      | <b>5</b> |

# Cadre Cases and Deaths by Health Care Workers (16 March 2020 – 17 May 2021)

| Health Care Worker Cadre         | Montserratado |          | Margibi   |          | Nimba     |          | River Gee |          | Sinoe    |          | Grand Kru |          | Gbarpolu |          | Bong      |          | Lofa      |          | Grand Bassa |          | Maryland  |          | Bomi     |          | Rivercess |          | Grand Gedeh |          | National (Total) |          |
|----------------------------------|---------------|----------|-----------|----------|-----------|----------|-----------|----------|----------|----------|-----------|----------|----------|----------|-----------|----------|-----------|----------|-------------|----------|-----------|----------|----------|----------|-----------|----------|-------------|----------|------------------|----------|
|                                  | Cases         | Deaths   | Cases     | Deaths   | Cases     | Deaths   | Cases     | Deaths   | Cases    | Deaths   | Cases     | Deaths   | Cases    | Deaths   | Cases     | Deaths   | Cases     | Deaths   | Cases       | Deaths   | Cases     | Deaths   | Cases    | Deaths   | Cases     | Deaths   | Cases       | Deaths   | Cases            | Deaths   |
| Doctors                          | 17            | 0        | 1         | 0        | 0         | 0        | 1         | 0        | 0        | 0        | 0         | 0        | 0        | 0        | 1         | 0        | 0         | 0        | 1           | 0        | 0         | 0        | 0        | 0        | 0         | 0        | 0           | 21       | 0                |          |
| Pharmacists                      | 4             | 0        | 0         | 0        | 0         | 0        | 0         | 0        | 0        | 0        | 0         | 0        | 0        | 0        | 0         | 0        | 0         | 0        | 0           | 0        | 0         | 0        | 0        | 0        | 0         | 0        | 4           | 0        |                  |          |
| Nurses                           | 23            | 1        | 2         | 0        | 2         | 0        | 5         | 0        | 0        | 0        | 2         | 0        | 1        | 1        | 12        | 1        | 8         | 0        | 5           | 0        | 1         | 0        | 1        | 0        | 0         | 0        | 62          | 3        |                  |          |
| Nurse Aid                        | 0             | 0        | 0         | 0        | 2         | 0        | 0         | 0        | 0        | 0        | 4         | 0        | 0        | 0        | 0         | 0        | 0         | 0        | 8           | 0        | 2         | 0        | 0        | 0        | 0         | 0        | 16          | 0        |                  |          |
| Midwife                          | 0             | 0        | 0         | 0        | 0         | 0        | 1         | 0        | 0        | 0        | 1         | 0        | 0        | 0        | 1         | 0        | 1         | 0        | 1           | 0        | 0         | 0        | 0        | 0        | 0         | 0        | 5           | 0        |                  |          |
| Physician Assistants             | 8             | 0        | 1         | 0        | 1         | 0        | 1         | 0        | 0        | 0        | 1         | 0        | 0        | 0        | 0         | 0        | 1         | 0        | 1           | 0        | 0         | 0        | 0        | 0        | 0         | 0        | 14          | 0        |                  |          |
| Lab Technician                   | 9             | 0        | 1         | 0        | 2         | 0        | 0         | 0        | 1        | 0        | 1         | 0        | 0        | 0        | 0         | 0        | 2         | 0        | 0           | 0        | 10        | 0        | 0        | 0        | 3         | 0        | 29          | 0        |                  |          |
| Environmental Health Technicians | 5             | 0        | 0         | 0        | 0         | 0        | 0         | 0        | 0        | 0        | 0         | 0        | 0        | 0        | 0         | 0        | 0         | 0        | 0           | 0        | 0         | 0        | 0        | 0        | 0         | 0        | 5           | 0        |                  |          |
| Dieticians                       | 0             | 0        | 7         | 1        | 0         | 0        | 0         | 0        | 0        | 0        | 0         | 0        | 0        | 0        | 0         | 0        | 0         | 0        | 0           | 0        | 0         | 0        | 0        | 0        | 0         | 0        | 7           | 1        |                  |          |
| Hospital Cleaner                 | 1             | 0        | 0         | 0        | 0         | 0        | 0         | 0        | 0        | 0        | 1         | 0        | 0        | 0        | 1         | 0        | 0         | 0        | 1           | 0        | 2         | 0        | 0        | 0        | 0         | 0        | 6           | 0        |                  |          |
| Others*                          | 21            | 0        | 0         | 0        | 7         | 0        | 2         | 0        | 2        | 0        | 4         | 0        | 0        | 0        | 4         | 1        | 4         | 0        | 4           | 0        | 1         | 0        | 4        | 0        | 0         | 2        | 0           | 55       | 1                |          |
| <b>Total:</b>                    | <b>88</b>     | <b>1</b> | <b>12</b> | <b>1</b> | <b>14</b> | <b>0</b> | <b>10</b> | <b>0</b> | <b>3</b> | <b>0</b> | <b>14</b> | <b>0</b> | <b>1</b> | <b>1</b> | <b>19</b> | <b>2</b> | <b>16</b> | <b>0</b> | <b>21</b>   | <b>0</b> | <b>16</b> | <b>0</b> | <b>5</b> | <b>0</b> | <b>3</b>  | <b>0</b> | <b>2</b>    | <b>0</b> | <b>224</b>       | <b>5</b> |

**\*Others include the following:**

**Radiologist, Microbiologist, Epidemiologist, Dispenser, Licensed Practical Nurse, Psychosocial worker, Hygienist, Logistician, Vaccinator, Ambulance Driver, Procurement Officer, Registrar, Accountant, Secretary, Hospital Administrator, Community Health Volunteer, GIS Specialist, EOC Coordinator**

# EPI-Curve of Confirmed Cases and Deaths

2131

2000

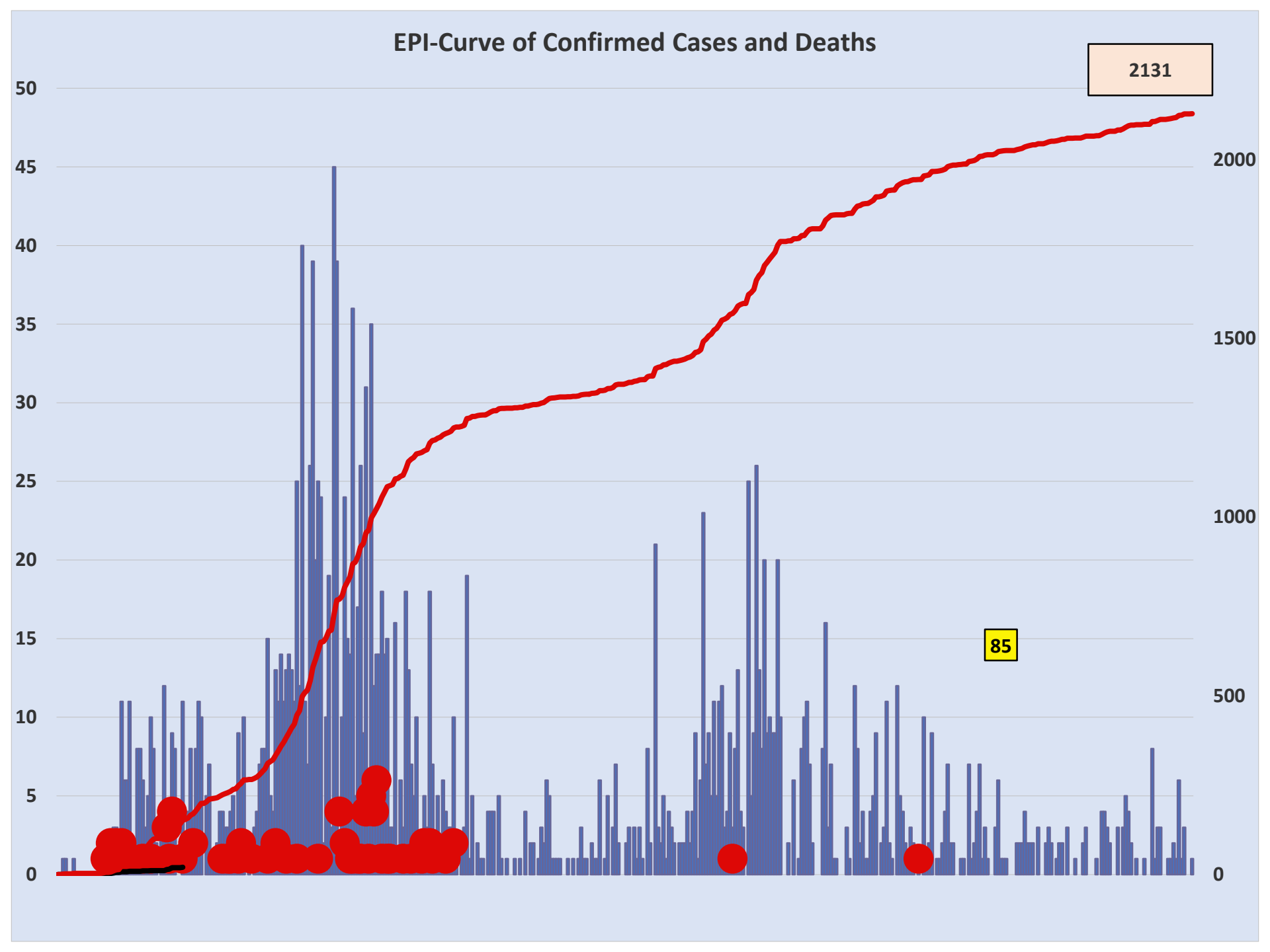
1500

1000

500

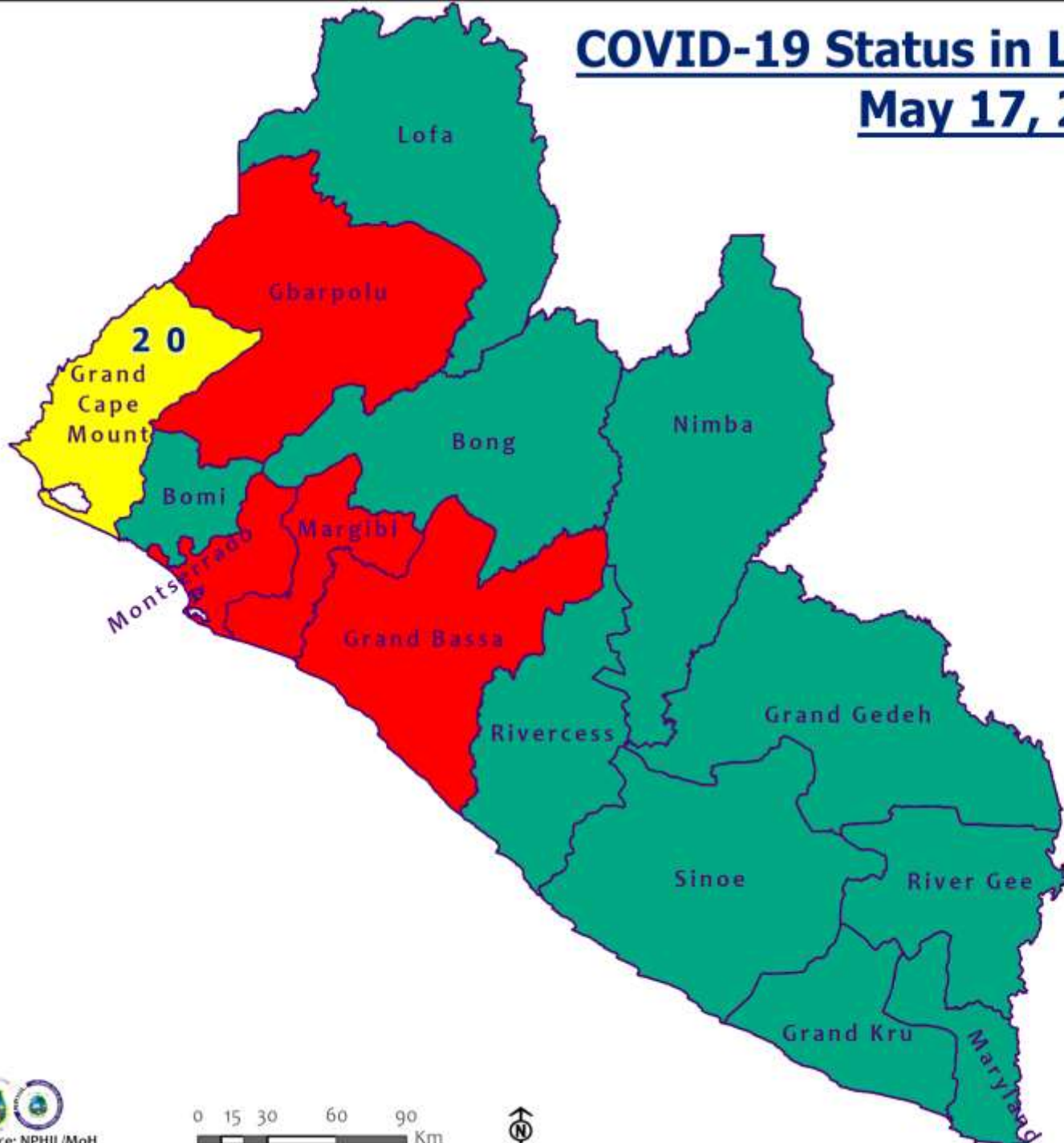
0

85





# COVID-19 Status in Liberia by County May 17, 2021



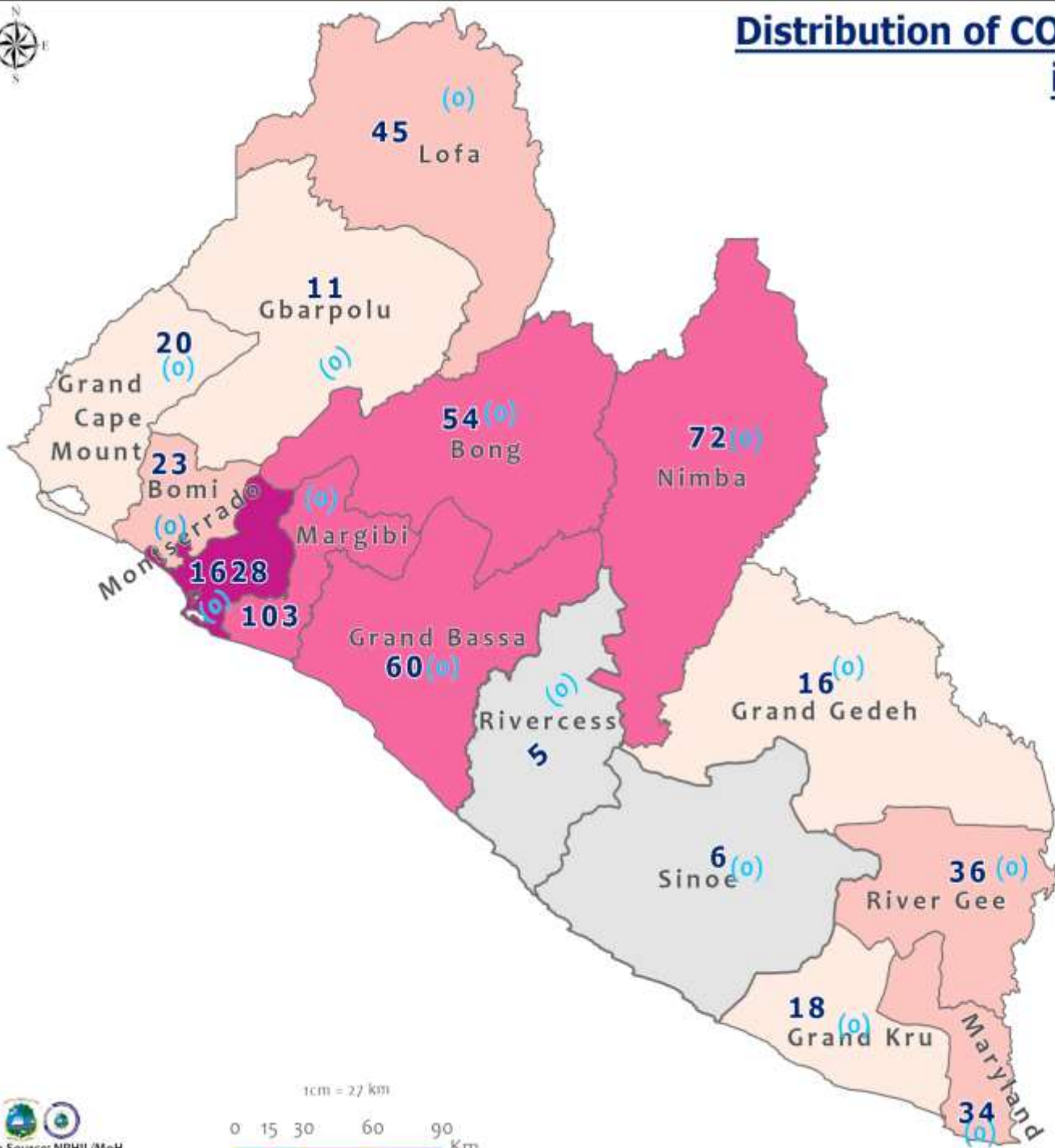
**Legend**

County Status

- Preparedness
- 28-Day Countdown
- Response



# Distribution of COVID-19 Cases by County in Liberia - May 17, 2021



Total cumulative cases:

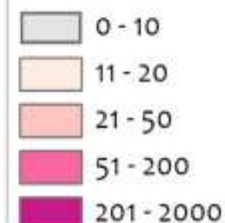
**2131**

Total new cases:

**0**

## Legend

Number of Cases



Cumulative cases

New cases

0 (0)

1cm = 27 km

0 15 30 60 90 Km



# COVID-19 Cases by District in Liberia - May 17, 2021



**Total Cases: 2131**

| Affected Counties | Cumulative Cases |
|-------------------|------------------|
| Montserrado       | 1628             |
| Margibi           | 103              |
| Nimba             | 72               |
| Grand Bassa       | 60               |
| Bong              | 54               |
| Lofa              | 45               |
| River Gee         | 36               |
| Maryland          | 34               |
| Bomi              | 23               |
| Grand Cape Mount  | 20               |
| Grand Kru         | 18               |
| Grand Gedeh       | 16               |
| Gbarpolu          | 11               |
| Sinoe             | 6                |
| Rivercess         | 5                |

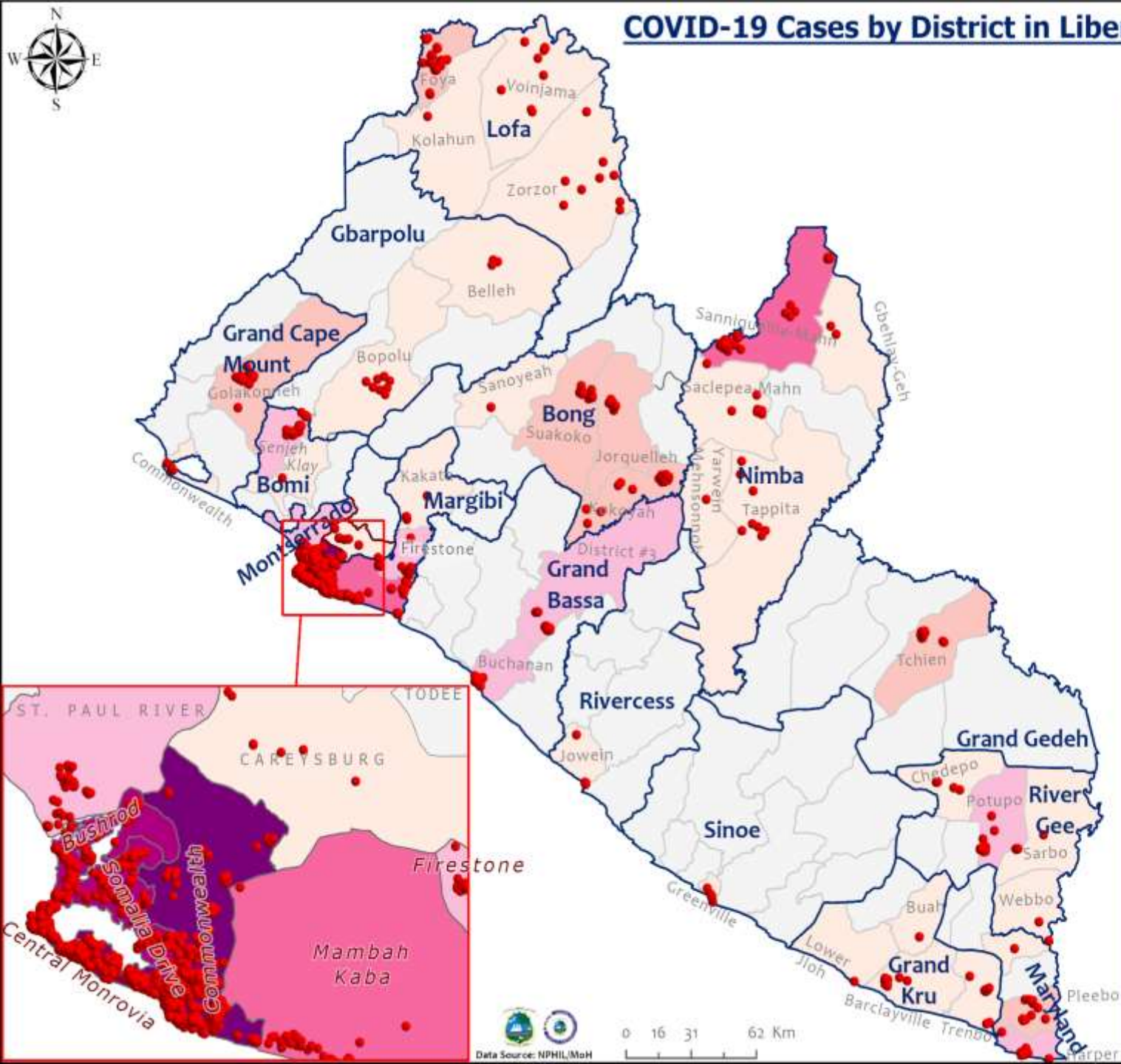
## Legend

### Case Status

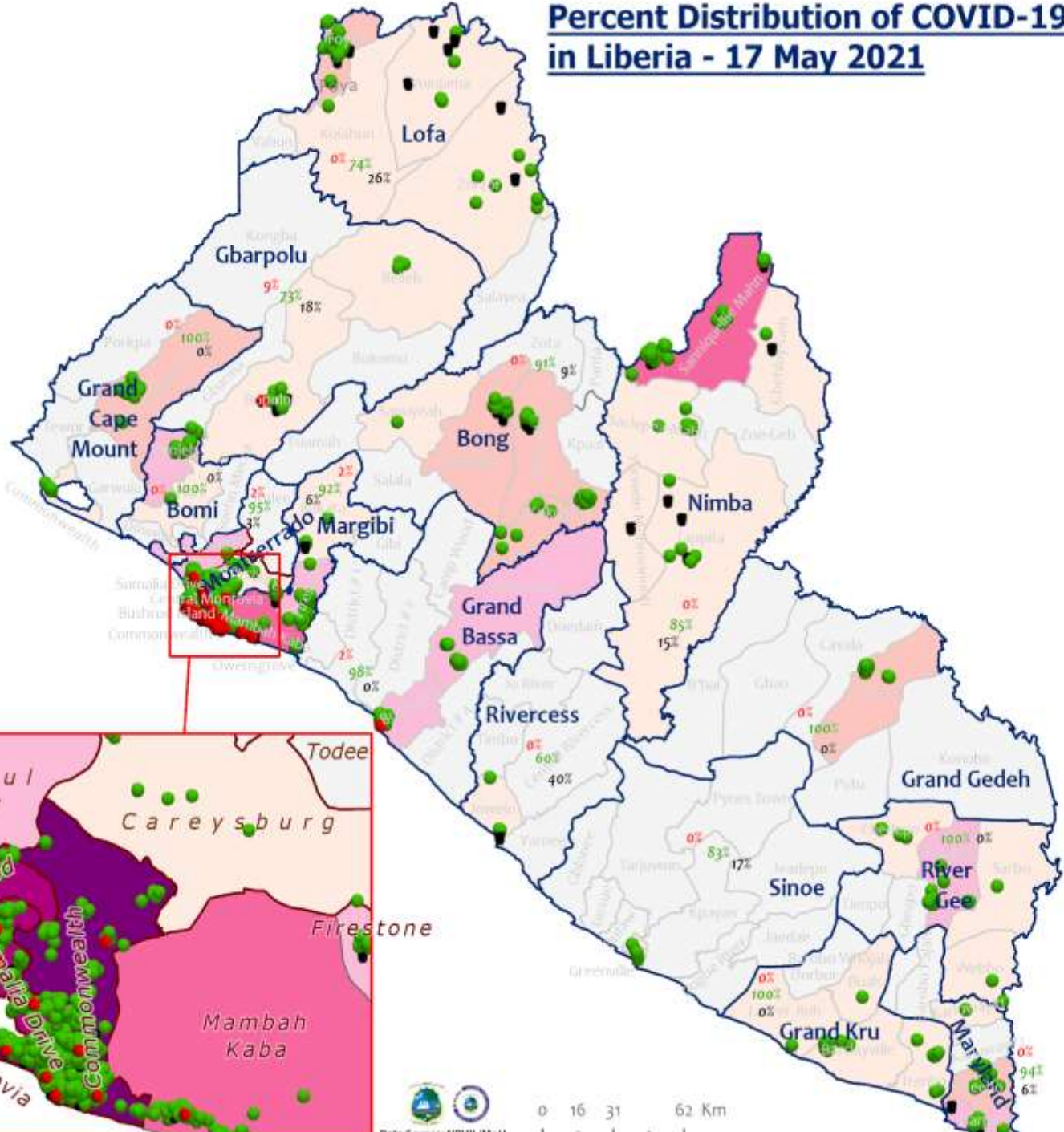
- ★ New confirmed case
- Confirmed cases

### Cases / District

- 0
- 1-10
- 11-20
- 21-50
- 51-100
- 101-200
- 201-600



# Percent Distribution of COVID-19 Cases by Status in Liberia - 17 May 2021



**Total Cases: 2131**

| Affected Counties | Cumulative Cases |
|-------------------|------------------|
| Montserrado       | 1628             |
| Margibi           | 103              |
| Nimba             | 72               |
| Grand Bassa       | 60               |
| Bong              | 54               |
| Lofa              | 45               |
| River Gee         | 36               |
| Maryland          | 34               |
| Bomi              | 23               |
| Grand Cape Mount  | 20               |
| Grand Kru         | 18               |
| Grand Gedeh       | 16               |
| Gbarpolu          | 11               |
| Sinoe             | 6                |
| Rivercess         | 5                |

## Legend

### Case Status

- Active
- Recovered
- Dead

[2%]  
[94%]  
[4%]

### Cases / District

- 0
- 1-10
- 11-20
- 21-50
- 51-100
- 101-200
- 201-600



## Daily Summary Report at Treatment Units – 17 May 2021

| Treatment Facility Name                        | New Admissions | Cumulative Admission | Daily Discharges | Cumulative Recoveries | Daily Deaths | Cumulative Deaths | Currently in treatment |
|--|----------------|----------------------|------------------|-----------------------|--------------|-------------------|------------------------|
| Bomi LGH Treatment Unit                        | 0              | 18                   | 0                | 18                    | 0            | 0                 | 0                      |
| Bong Treatment Unit                            | 0              | 26                   | 0                | 26                    | 0            | 0                 | 0                      |
| Chief Jallahlone Hospital Treatment Unit       | 0              | 1                    | 0                | 1                     | 0            | 0                 | 0                      |
| Grand Bassa Arcelor Mittal Treatment Unit      | 0              | 6                    | 0                | 6                     | 0            | 0                 | 0                      |
| Grand Bassa LGH Treatment Unit                 | 0              | 3                    | 0                | 3                     | 0            | 0                 | 0                      |
| LAC Treatment Unit                             | 0              | 42                   | 0                | 42                    | 0            | 0                 | 0                      |
| Starbase Treatment Unit                        | 0              | 648                  | 0                | 637                   | 0            | 9                 | 2                      |
| Union Treatment Center                         | 0              | 78                   | 0                | 78                    | 0            | 0                 | 0                      |
| Duside Hospital Treatment Unit                 | 0              | 42                   | 0                | 40                    | 0            | 2                 | 0                      |
| Martha Tubman Hospital Treatment Unit          | 0              | 13                   | 0                | 13                    | 0            | 0                 | 0                      |
| Rally Time Treatment Unit                      | 0              | 4                    | 0                | 4                     | 0            | 0                 | 0                      |
| Sasstown Treatment Unit                        | 0              | 7                    | 0                | 7                     | 0            | 0                 | 0                      |
| Behwan Treatment Unit                          | 0              | 7                    | 0                | 7                     | 0            | 0                 | 0                      |
| FJ Grante Hospital Treatment Unit              | 0              | 5                    | 0                | 5                     | 0            | 0                 | 0                      |
| JJ Dossen Hospital Treatment Unit              | 0              | 9                    | 0                | 9                     | 0            | 0                 | 0                      |
| Pleebo Health Center Treatment Unit            | 0              | 21                   | 0                | 21                    | 0            | 0                 | 0                      |
| Tellewoyan Memorial Hospital Treatment Unit    | 0              | 13                   | 0                | 13                    | 0            | 0                 | 0                      |
| Foya Borma Hospital Treatment Unit             | 0              | 12                   | 0                | 12                    | 0            | 0                 | 0                      |
| Zorzor Treatment Unit                          | 0              | 6                    | 0                | 6                     | 0            | 0                 | 0                      |
| Robert Sport Treatment Unit                    | 0              | 1                    | 0                | 1                     | 0            | 0                 | 0                      |
| Ganta United Methodist Hospital Treatment Unit | 0              | 1                    | 0                | 1                     | 0            | 0                 | 0                      |
| Arcelor Mittal Yekepa Treatment Unit           | 0              | 12                   | 0                | 12                    | 0            | 0                 | 0                      |
| Jackson F. Doe Treatment Unit                  | 0              | 5                    | 0                | 4                     | 0            | 1                 | 0                      |
| St. Frances Hospital Treatment Unit            | 0              | 2                    | 0                | 2                     | 0            | 0                 | 0                      |
| Fish Town Hospital Treatment Unit              | 0              | 36                   | 0                | 36                    | 0            | 0                 | 0                      |
| E&J Medical Center Treatment Unit              | 0              | 20                   | 0                | 19                    | 0            | 1                 | 0                      |
| <b>TOTAL</b>                                   | <b>0</b>       | <b>1038</b>          | <b>0</b>         | <b>1023</b>           | <b>0</b>     | <b>13</b>         | <b>2</b>               |

3 of the 5 persons admitted at Starbase tested negative for Covid-19 but are contacts of the positive cases

# Home-Base Care of COVID-19 Cases

| County        | New Admissions | Currently in Admissions | No. Followed-up (In-person/Phone) | Cumulative Admissions | New Recoveries | Cumulative Recoveries | Referrals to TU | Cumulative Referrals to TU | New Death | Cumulative Deaths |
|---------------|----------------|-------------------------|-----------------------------------|-----------------------|----------------|-----------------------|-----------------|----------------------------|-----------|-------------------|
| Montserrat    | 0              | 7                       | 7                                 | 249                   | 6              | 234                   | 0               | 8                          | 0         | 0                 |
| Grand Bassa   |                |                         |                                   | 0                     |                |                       |                 |                            |           |                   |
| Gbarpolu      |                |                         |                                   | 0                     |                |                       |                 |                            |           |                   |
| Margibi       |                |                         |                                   | 0                     |                |                       |                 |                            |           |                   |
| <b>Total:</b> | 0              | 7                       | 7                                 | 249                   | 6              | 234                   | 0               | 8                          | 0         | 0                 |

# Laboratory Samples Evaluated – 17 May 2021

| <b>County</b>            | <b>Sample Evaluated</b> | <b>New Positive</b> | <b>Repeat Positive</b> | <b>Initial Negative</b> | <b>Repeat Test Negative</b> | <b>Pending Lab Result</b> |
|--------------------------|-------------------------|---------------------|------------------------|-------------------------|-----------------------------|---------------------------|
| <b>Bong</b>              | 3                       | 0                   | 0                      | 2                       | 0                           | 1                         |
| <b>Grand Bassa</b>       | 5                       | 0                   | 0                      | 5                       | 0                           | 0                         |
| <b>Grand Cape Mount</b>  | 4                       | 0                   | 0                      | 4                       | 0                           | 0                         |
| <b>Margibi</b>           | 17                      | 0                   | 0                      | 16                      | 0                           | 1                         |
| <b>Montserrado</b>       | 317                     | 0                   | 0                      | 303                     | 0                           | 14                        |
| <b>Nimba</b>             | 4                       | 0                   | 0                      | 4                       | 0                           | 0                         |
| <b>River Gee</b>         | 2                       | 0                   | 0                      | 2                       | 0                           | 0                         |
| <b>TOTAL</b>             | <b>352</b>              | <b>0</b>            | <b>0</b>               | <b>336</b>              | <b>0</b>                    | <b>16</b>                 |
| <b>Outgoing Traveler</b> | 106                     | 0                   | 0                      | 102                     | 0                           | 4                         |
| <b>Incoming Traveler</b> | 224                     | 0                   | 0                      | 232                     | 0                           | 12                        |
| <b>Voluntary</b>         | 2                       | 0                   | 0                      | 2                       | 0                           | 0                         |
| <b>NRL</b>               | 348                     | 0                   | 0                      | 332                     | 0                           | 16                        |
| <b>UN Clinic Lab</b>     | 4                       | 0                   | 0                      | 4                       | 0                           | 0                         |



# Incoming Travelers Testing Positive for COVID-19 (May 2021)

| Country of embarkment | Cases     |
|-----------------------|-----------|
| USA                   | 3         |
| Ghana                 | 2         |
| Australia             | 1         |
| Pakistan              | 1         |
| Nigeria               | 1         |
| UAE                   | 1         |
| Lebanon               | 1         |
| Canada                | 1         |
| India                 | 1         |
| <b>Total</b>          | <b>12</b> |

| Occupation     | Cases     |
|----------------|-----------|
| Business       | 4         |
| Student        | 2         |
| PFM Consultant | 1         |
| Physician      | 1         |
| Diplomat       | 1         |
| Nurse Aide     | 1         |
| Retired        | 1         |
| Geologist      | 1         |
| <b>Total</b>   | <b>12</b> |

| Nationality  | Cases     |
|--------------|-----------|
| American     | 3         |
| Liberian     | 2         |
| Indian       | 2         |
| Pakistani    | 1         |
| Nigerian     | 1         |
| Lebanese     | 1         |
| Canadian     | 1         |
| Australian   | 1         |
| <b>Total</b> | <b>12</b> |

| Flight        | Cases     |
|---------------|-----------|
| Kenya Airways | 3         |
| ASKY          | 3         |
| SN Brussels   | 3         |
| Air France    | 2         |
| AWA           | 1         |
| <b>Total</b>  | <b>12</b> |

# COVID-19 Vaccination National Report May 17

| Less than 60 years (Not Older adults) |             |                              |              |                               | 60 years and above (Older adults) |                              |             |             | Total        |
|---------------------------------------|-------------|------------------------------|--------------|-------------------------------|-----------------------------------|------------------------------|-------------|-------------|--------------|
| At least one health condition         |             | No Existing health condition |              | At least one health condition |                                   | No Existing health condition |             |             |              |
| Male                                  | Female      | Male                         | Female       | Male                          | Female                            | Male                         | Female      |             |              |
| Health Care workers                   | 616         | 564                          | 5137         | 3954                          | 103                               | 54                           | 281         | 204         | 10913        |
| Others                                | 1970        | 1452                         | 16694        | 10273                         | 701                               | 646                          | 1878        | 1295        | 34909        |
| <b>Total Cov-1</b>                    | <b>2586</b> | <b>2016</b>                  | <b>21831</b> | <b>14227</b>                  | <b>804</b>                        | <b>700</b>                   | <b>2159</b> | <b>1499</b> | <b>45822</b> |
| Health Care workers                   | 0           | 0                            | 0            | 0                             | 0                                 | 0                            | 1           | 0           | 1            |
| Others                                | 0           | 0                            | 0            | 0                             | 0                                 | 0                            | 0           | 0           | 0            |
| <b>Total Cov-2</b>                    | <b>0</b>    | <b>0</b>                     | <b>0</b>     | <b>0</b>                      | <b>0</b>                          | <b>0</b>                     | <b>1</b>    | <b>0</b>    | <b>1</b>     |

# Summary of COVID-19 Daily PoE in Response Counties (17 May 2021)

| Date of travel       | Type of PoE                 | Point of Entry Name | Type of conveyance      | # of Travelers Arrival | # of Travelers departure | # of travelers with elevated temp | Total Travelers screened |        | Total Passengers tested on Arrival | Total Foreign diplomat Exempted | # of Children under 5 years not tested | Passengers staying less than 5 days exempted | Total passengers in transit | Total Passengers from Indian | Total passports collected | Total # of Travelers |     |     |
|----------------------|-----------------------------|---------------------|-------------------------|------------------------|--------------------------|-----------------------------------|--------------------------|--------|------------------------------------|---------------------------------|--|--|-----------------------------|------------------------------|---------------------------|----------------------|-----|-----|
|                      |                             |                     |                         |                        |                          |                                   | Male                     | Female |                                    |                                 |  |  |                             |                              |                           |                      |     |     |
| 17-May               | Airport                     |                     | Air Morac               | 0                      | 0                        | 0                                 | 0                        | 0      | 0                                  | 0                               | 0                                      | 0  | 0                           | 0                            | 0                         | 0                    |     |     |
|                      |                             |                     | Brussels                | 37                     | 83                       | 0                                 | 71                       | 49     | 34                                 | 6                               | 1                                      | 0  | 0                           | 0                            | 0                         | 1                    | 120 |     |
|                      |                             |                     | AWA                     | 0                      | 0                        | 0                                 | 0                        | 0      | 0                                  | 0                               | 0                                      | 0  | 0                           | 0                            | 0                         | 0                    | 0   |     |
|                      |                             |                     | Air France              | 18                     | 18                       | 0                                 | 21                       | 15     | 17                                 | 1                               | 0                                      | 0  | 0                           | 0                            | 0                         | 0                    | 0   | 36  |
|                      |                             |                     | Air Cote D'Ivoire       | 0                      | 0                        | 0                                 | 0                        | 0      | 0                                  | 0                               | 0                                      | 0  | 0                           | 0                            | 0                         | 0                    | 0   | 0   |
|                      |                             |                     | DHL                     | 0                      | 0                        | 0                                 | 0                        | 0      | 0                                  | 0                               | 0                                      | 0  | 0                           | 0                            | 0                         | 0                    | 0   | 0   |
|                      |                             |                     | Kenya                   | 82                     | 60                       | 0                                 | 79                       | 43     | 80                                 | 3                               | 2                                      | 0  | 0                           | 0                            | 0                         | 0                    | 1   | 142 |
|                      |                             |                     | Asky                    | 0                      | 81                       | 0                                 | 60                       | 21     | 79                                 | 4                               | 1                                      | 0  | 0                           | 0                            | 0                         | 19                   | 3   | 81  |
|                      |                             |                     | Others (Special flight) | 0                      | 0                        | 0                                 | 0                        | 0      | 0                                  | 0                               | 0                                      | 0  | 0                           | 0                            | 0                         | 0                    | 0   | 0   |
|                      | James Spriggs Payne Airport | Flight              | 16                      | 5                      | 0                        | 18                                | 4                        | 0      | 0                                  | 0                               | 0                                      | 0  | 0                           | 0                            | 0                         | 0                    | 21  |     |
|                      | Land                        | Ganta Main          | Land                    | 53                     | 39                       | 0                                 | 31                       | 61     | 0                                  | 0                               | 0                                      | 0  | 0                           | 0                            | 0                         | 0                    | 92  |     |
|                      |                             | Yekepa              | Land                    | 4                      | 8                        | 0                                 | 8                        | 4      | 0                                  | 0                               | 0                                      | 0  | 0                           | 0                            | 0                         | 0                    | 12  |     |
|                      |                             | Lehgain             | Land                    | 0                      | 0                        | 0                                 | 0                        | 0      | 0                                  | 0                               | 0                                      | 0  | 0                           | 0                            | 0                         | 0                    | 0   |     |
|                      |                             | Loguatuo            | Land                    | 0                      | 0                        | 0                                 | 4                        | 3      | 0                                  | 0                               | 0                                      | 0  | 0                           | 0                            | 0                         | 0                    | 0   |     |
|                      |                             | Go-Yeelah           | Land                    | 10                     | 11                       | 0                                 | 9                        | 12     | 0                                  | 0                               | 0                                      | 0  | 0                           | 0                            | 0                         | 0                    | 21  |     |
|                      |                             | Gahnpa              | Land                    | 16                     | 2                        | 0                                 | 12                       | 6      | 0                                  | 0                               | 0                                      | 0  | 0                           | 0                            | 0                         | 0                    | 18  |     |
|                      |                             | Wehyipa             | Land                    | 0                      | 7                        | 0                                 | 4                        | 3      | 0                                  | 0                               | 0                                      | 0  | 0                           | 0                            | 0                         | 0                    | 7   |     |
|                      |                             | Bo Water Side       | Land                    | 12                     | 40                       | 0                                 | 21                       | 31     | 0                                  | 0                               | 0                                      | 0  | 0                           | 0                            | 0                         | 0                    | 52  |     |
|                      | Seaport                     | Buchanan            | Vessel                  | 0                      | 0                        | 0                                 | 0                        | 0      | 0                                  | 0                               | 0                                      | 0  | 0                           | 0                            | 0                         | 0                    | 0   |     |
| Freeport of Monrovia |                             | Vessel              | 0                       | 0                      | 0                        | 0                                 | 0                        | 0      | 0                                  | 0                               | 0                                      | 0  | 0                           | 0                            | 0                         | 0                    |     |     |
| <b>Total:</b>        |                             |                     |                         | 236                    | 354                      | 0                                 | 338                      | 252    | 210                                | 14                              | 4                                      | 0  | 0                           | 0                            | 5                         | <b>602</b>           |     |     |

# Summary of COVID-19 Contact Tracing in Response Counties

| County           | New Contacts Line listed | Cumulative Contacts | No. of Health Care Workers as Contacts | Cumulative no. of Health Care Workers as contacts | Contacts became a case | Cumulative contacts that became a case | Contacts Completed 14 Days | Cumulative Contacts Completing 14 Days | Contacts Under Follow-up | Contacts lost to Follow-up |
|------------------|--------------------------|---------------------|--|---|------------------------|--|----------------------------|--|--------------------------|----------------------------|
| Montserrado      | 0                        | 5560                | 0                                      | 508   | 0                      | 189                                    | 4                          | 5492                                   | 6                        | 3                          |
| Margibi          | 0                        | 480                 | 0                                      | 125   | 0                      | 42                                     | 0                          | 470                                    | 0                        | 0                          |
| Grand Bassa      | 0                        | 457                 | 0                                      | 140   | 0                      | 51                                     | 0                          | 410                                    | 4                        | 0                          |
| Sinoe            | 0                        | 191                 | 0                                      | 30  | 0                      | 1                                      | 0                          | 191                                    | 0                        | 0                          |
| Lofa             | 0                        | 758                 | 0                                      | 103   | 0                      | 34                                     | 0                          | 726                                    | 0                        | 0                          |
| Nimba            | 0                        | 613                 | 0                                      | 53  | 0                      | 25                                     | 0                          | 550                                    | 0                        | 0                          |
| Bong             | 0                        | 302                 | 0                                      | 70  | 0                      | 28                                     | 0                          | 300                                    | 0                        | 0                          |
| Gbarpolu         | 0                        | 87                  | 0                                      | 13  | 0                      | 8                                      | 0                          | 87                                     | 0                        | 0                          |
| Grand Cape Mount | 0                        | 49                  | 0                                      | 3   | 0                      | 4                                      | 0                          | 51                                     | 0                        | 0                          |
| RiverGee         | 0                        | 123                 | 0                                      | 13  | 0                      | 30                                     | 0                          | 123                                    | 0                        | 0                          |
| Maryland         | 0                        | 208                 | 0                                      | 28  | 0                      | 19                                     | 0                          | 136                                    | 0                        | 0                          |
| Bomi             | 0                        | 180                 | 0                                      | 17  | 0                      | 15                                     | 0                          | 177                                    | 0                        | 0                          |
| Rivercess        | 0                        | 102                 | 0                                      | 55  | 0                      | 0                                      | 0                          | 88                                     | 0                        | 0                          |
| Grand Kru        | 0                        | 333                 | 0                                      | 131   | 0                      | 17                                     | 0                          | 330                                    | 0                        | 0                          |
| Grand Gedeh      | 0                        | 163                 | 0                                      | 49  | 0                      | 6                                      | 0                          | 125                                    | 0                        | 0                          |
| National         | 0                        | 9606                | 0                                      | 1338  | 0                      | 469                                    | 4                          | 9256                                   | 10                       | 3                          |

**Thank you for Listening**