



Liberia COVID-19 Daily Sitrep 427 (May 16, 2021)

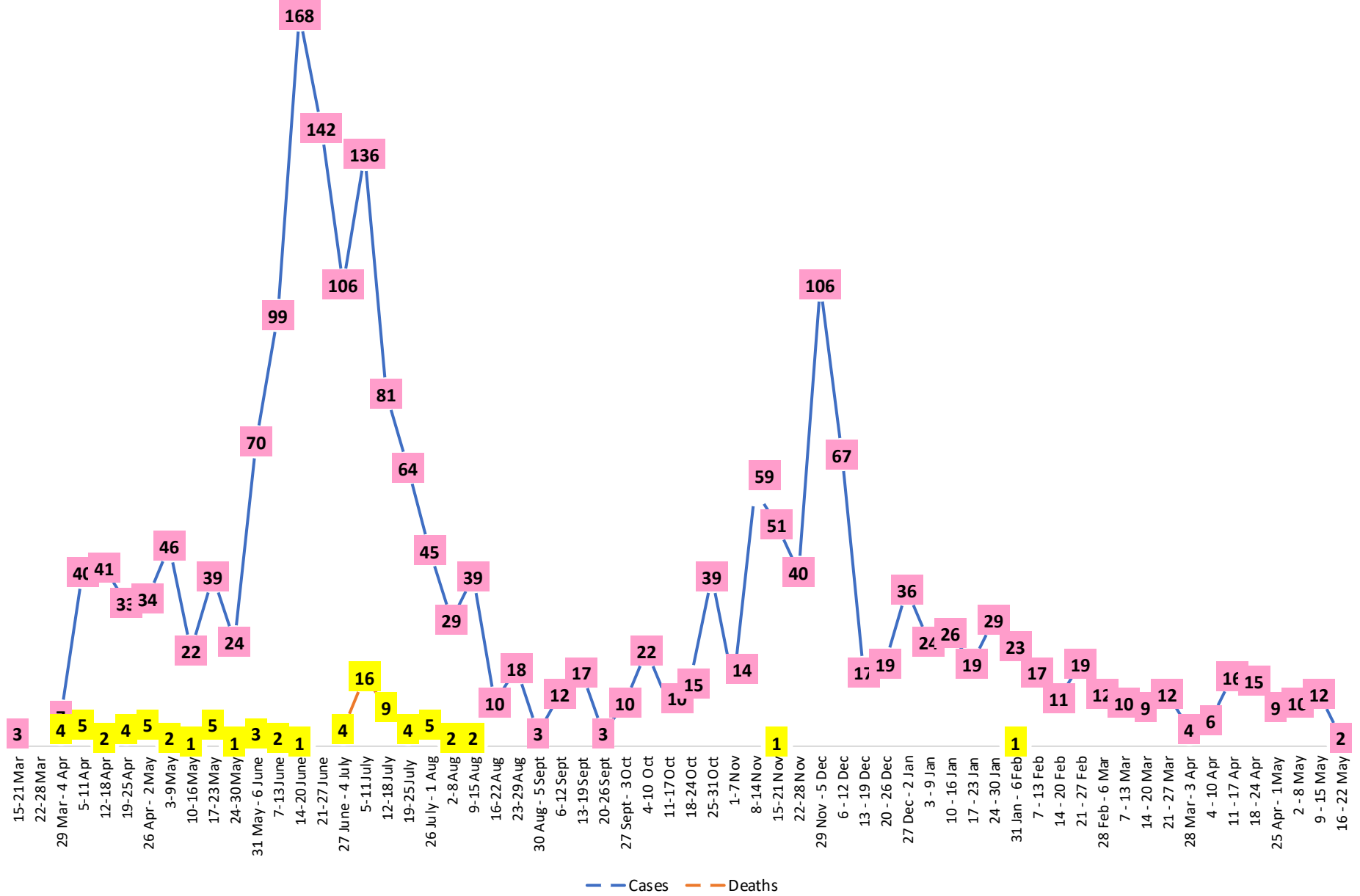
Summary of COVID-19 Cases by Reporting County, Liberia, 16 March 2020 – 16 May 2021

Bong	0	0	54
Gbarpolu	0	0	11
Grand Bassa	0	0	60
Grand Cape Mount	0	0	20
Grand Kru	0	0	18
Grand Gedeh	0	0	16
Lofa	0	0	45
Margibi	1	0	103
Maryland	0	0	34
Montserrado	1	0	1628
Nimba	0	0	72
Rivercess	0	0	5
River Gee	0	0	36
Sinoe	0	0	6
NATIONAL	2	0	2131

Demographic Breakdown (Gender & Age) of Confirmed COVID-19 Cases (16 March 2020 – 16 May 2021)

County	<15 years		15 - 34		35 - 54		55+		All ages		Total Confirmed
	M	F	M	F	M	F	M	F	M	F	
Bomi	2	2	3	5	7	3	0	1	12	11	23
Bong	3	1	4	6	20	9	8	3	35	19	54
Gbarpolu	1	2	0	2	4	1	1	0	6	5	11
Grand Bassa	11	2	9	11	13	8	4	2	37	23	60
Grand Cape Mount	0	0	11	0	8	0	1	0	20	0	20
Grand Kru	0	0	2	5	4	5	2	0	8	10	18
Grand Gedeh	0	1	1	2	7	3	2	0	10	6	16
Lofa	3	3	8	3	13	5	8	2	32	13	45
Margibi	6	4	15	13	28	12	16	9	65	38	103
Maryland	2	0	10	6	9	4	1	2	22	12	34
Montserrado	53	50	385	223	465	199	175	78	1078	550	1628
Nimba	1	4	15	10	28	6	5	3	49	23	72
Rivercess	0	0	2	3	0	0	0	0	2	3	5
River Gee	0	0	4	3	19	5	5	0	28	8	36
Sinoe	0	0	1	0	4	1	0	0	5	1	6
National	82	69	470	292	629	261	228	100	1409	722	2131

COVID-19 WEEKLY EPI-CURVE



Summary of COVID-19 Deaths by Reporting County, Liberia, 16 March 2020 – 16 May 2021

County	ew Suspected Deaths	COVID-19 Treatment Unit	Total in COVID-19 Treatment Unit	Health Facility	Total in Health Facility	Community	Total in Community	Confirmed Deaths on Contact List	Cumulative Deaths
Bomi	0	0	0	0	1	0	0	0	1
Bong	0	0	0	0	4	0	1	0	5
Gbarpolu	0	0	0	0	2	0	0	0	2
Grand Bassa	0	0	0	0	0	0	0	0	0
Grand Cape Mount	0	0	0	0	0	0	0	0	0
Grand Gedeh	0	0	0	0	0	0	0	0	0
Grand Kru	0	0	0	0	0	0	0	0	0
Lofa	0	0	0	0	6	0	5	0	11
Maryland	0	0	0	0	2	0	0	0	2
Margibi	0	0	2	0	4	0	0	0	6
Montserrado	0	0	9	0	19	0	16	0	43
Nimba	0	0	2	0	5	0	4	0	11
Rivercess	0	0	0	0	1	0	1	0	2
River Gee	0	0	0	0	0	0	0	0	0
Sinoe	0	0	0	0	1	0	0	0	1

The Liberia Case Fatality rate (CFR) officially considered is for deaths that occurred among patients in care at the COVID-19 treatment units across the country. As of 30 December 2020 , a total of 13 deaths have been recorded CFR=1.3%. The country is however keeping active surveillance on community deaths and deaths in non COVID-19 treatment health units.

Daily and Cumulative Healthcare Worker (HCW) COVID-19 Cases and Deaths by County, Liberia, 16 March 2020 – 16 May 2021

County	DAILY REPORT						CUMULATIVE CASES (ALIVE & DEAD)	
	New Suspected & High Risk Cases (Alive)			New Suspect Death	Laboratory Confirmed Cases	Confirmed Cases on Contact List	Confirmed	Deaths
	Suspect	High Risk	Total					
Bomi	0	0	0	0	0	0	5	0
Bong	0	0	0	0	0	0	19	3
Gbarpolu	0	0	0	0	0	0	1	0
Grand Bassa	0	0	0	0	0	0	21	0
Grand Gedeh	0	0	0	0	0	0	2	0
Grand Kru	0	0	0	0	0	0	14	0
Lofa	0	0	0	0	0	0	16	0
Margibi	0	0	0	0	0	0	12	1
Maryland	0	0	0	0	0	0	16	0
Montserrado	0	0	0	0	0	0	88	1
Nimba	0	0	0	0	0	0	14	0
Rivercess	0	0	0	0	0	0	3	0
River Gee	0	0	0	0	0	0	10	0
Sinoe	0	0	0	0	0	0	3	0
NATIONAL	0	0	0	0	0	0	224	5

Cadre Cases and Deaths by Health Care Workers (16 March 2020 – 16 May 2021)

Health Care Worker Cadre	Montserratado		Margibi		Nimba		River Gee		Sinoe		Grand Kru		Gbarpolu		Bong		Lofa		Grand Bassa		Maryland		Bomi		Rivercess		Grand Gedeh		National (Total)	
	Cases	Deaths	Cases	Deaths	Cases	Deaths	Cases	Deaths	Cases	Deaths	Cases	Deaths	Cases	Deaths	Cases	Deaths	Cases	Deaths	Cases	Deaths	Cases	Deaths	Cases	Deaths	Cases	Deaths	Cases	Deaths	Cases	Deaths
Doctors	17	0	1	0	0	0	1	0	0	0	0	0	0	0	1	0	0	0	1	0	0	0	0	0	0	0	0	21	0	
Pharmacists	4	0	0	0	0	0	0	0	0	0	0	0	0	0	0	0	0	0	0	0	0	0	0	0	0	0	4	0		
Nurses	23	1	2	0	2	0	5	0	0	0	2	0	1	1	12	1	8	0	5	0	1	0	1	0	0	0	62	3		
Nurse Aid	0	0	0	0	2	0	0	0	0	0	4	0	0	0	0	0	0	8	0	2	0	0	0	0	0	0	16	0		
Midwife	0	0	0	0	0	0	1	0	0	0	1	0	0	0	1	0	1	0	1	0	0	0	0	0	0	0	5	0		
Physician Assistants	8	0	1	0	1	0	1	0	0	0	1	0	0	0	0	0	1	0	1	0	0	0	0	0	0	0	14	0		
Lab Technician	9	0	1	0	2	0	0	0	1	0	1	0	0	0	0	2	0	0	0	10	0	0	0	3	0	0	29	0		
Environmental Health Technicians	5	0	0	0	0	0	0	0	0	0	0	0	0	0	0	0	0	0	0	0	0	0	0	0	0	0	5	0		
Dieticians	0	0	7	1	0	0	0	0	0	0	0	0	0	0	0	0	0	0	0	0	0	0	0	0	0	0	7	1		
Hospital Cleaner	1	0	0	0	0	0	0	0	0	0	1	0	0	0	1	0	0	0	1	0	2	0	0	0	0	0	6	0		
Others*	21	0	0	0	7	0	2	0	2	0	4	0	0	0	4	1	4	0	4	0	1	0	4	0	2	0	55	1		
Total:	88	1	12	1	14	0	10	0	3	0	14	0	1	1	19	2	16	0	21	0	16	0	5	0	3	0	2	0	224	5

***Others include the following:**

Radiologist, Microbiologist, Epidemiologist, Dispenser, Licensed Practical Nurse, Psychosocial worker, Hygienist, Logistician, Vaccinator, Ambulance Driver, Procurement Officer, Registrar, Accountant, Secretary, Hospital Administrator, Community Health Volunteer, GIS Specialist, EOC Coordinator

EPI-Curve of Confirmed Cases and Deaths

2131

2000

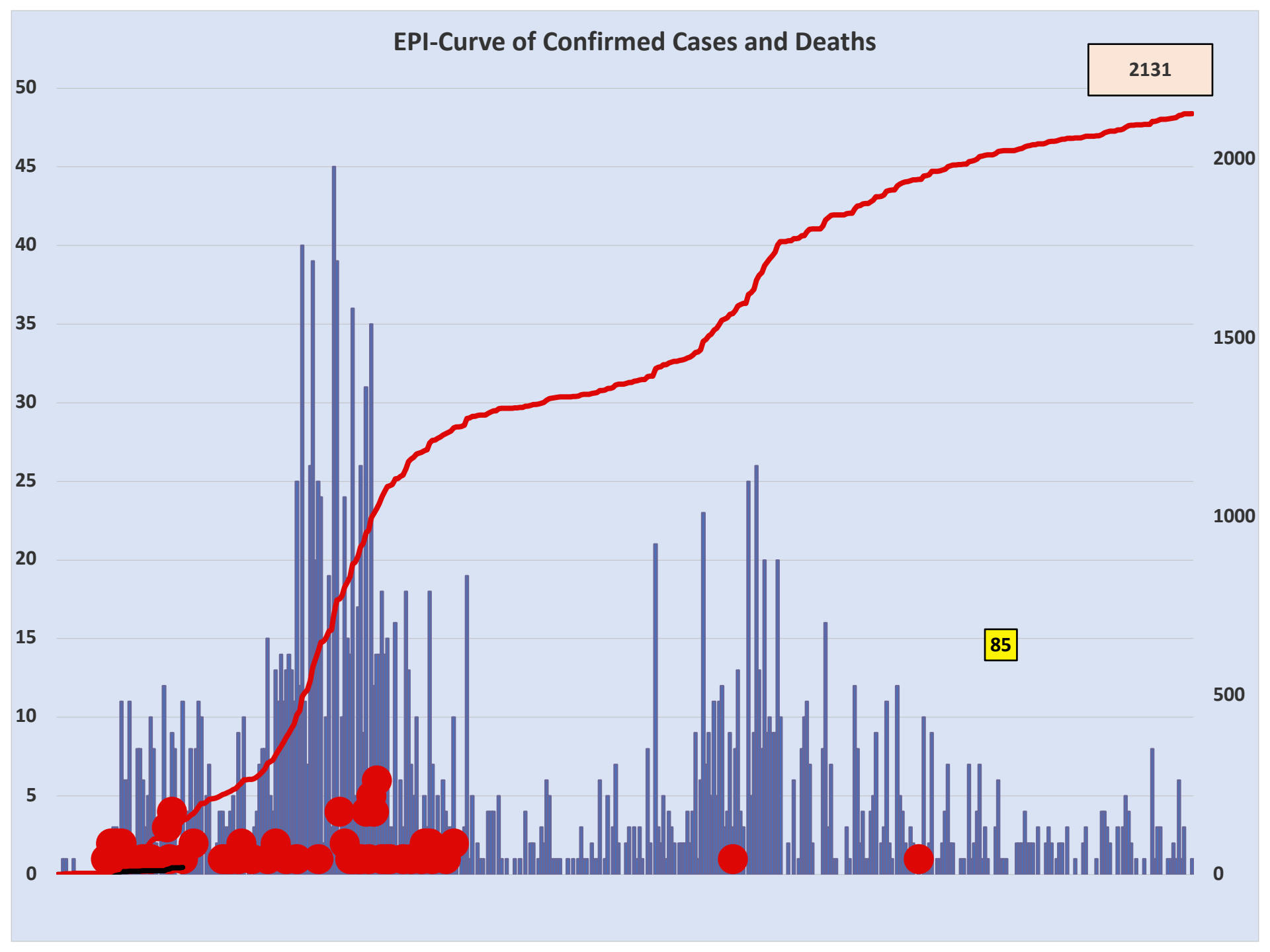
1500

1000

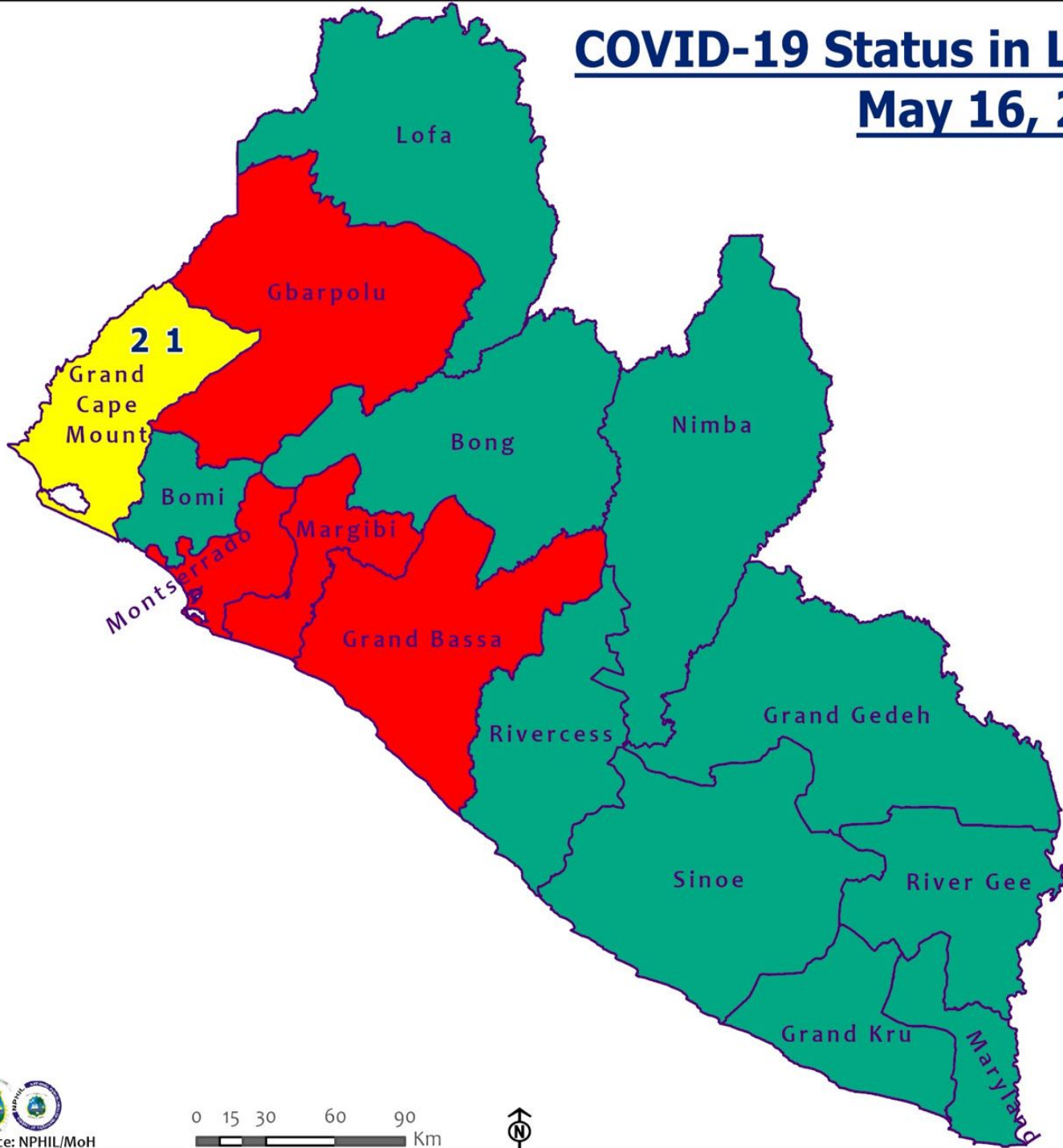
500

0

85



COVID-19 Status in Liberia by County May 16, 2021



Legend

County Status

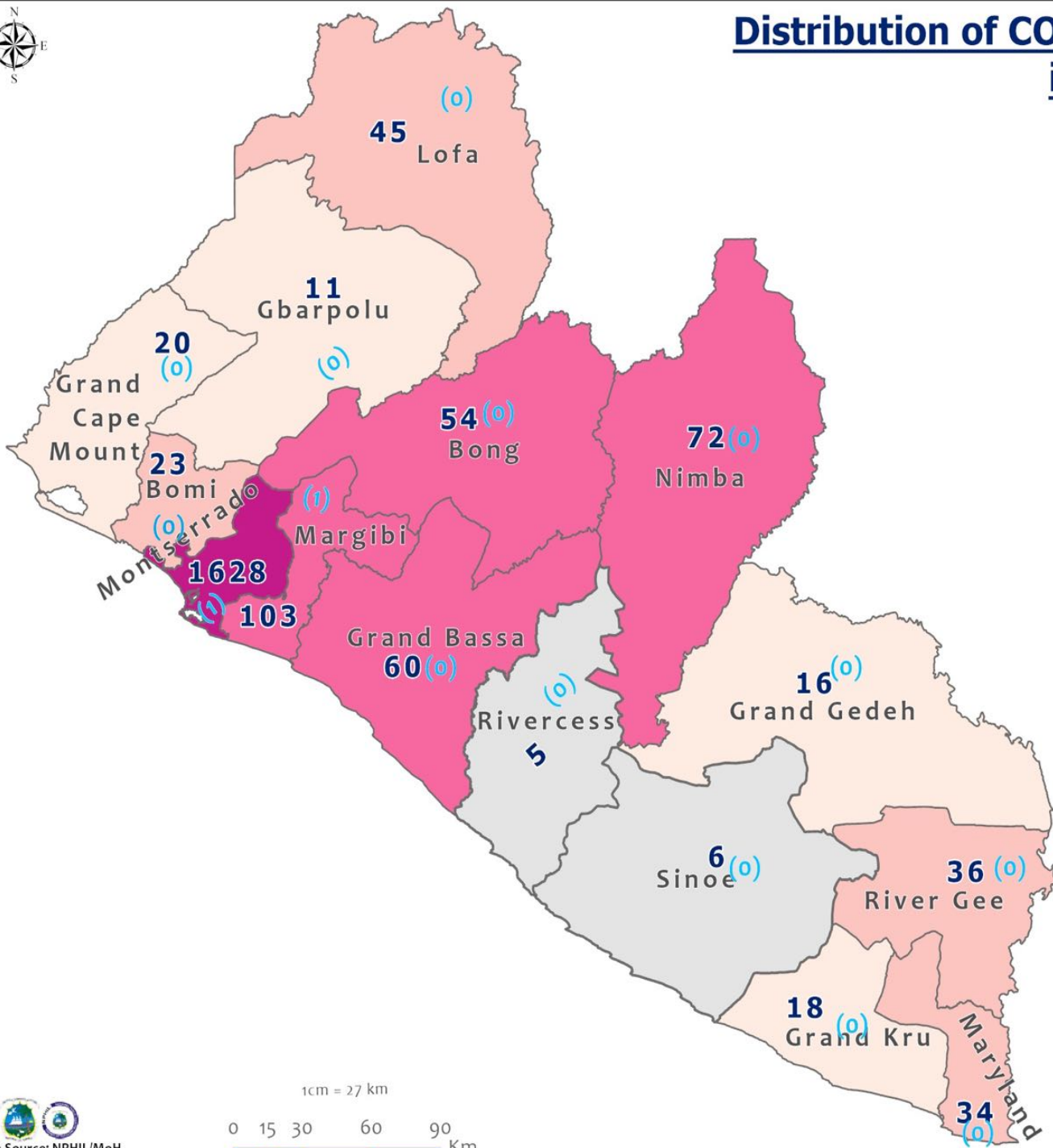
- Preparedness
- 28-Day Countdown
- Response



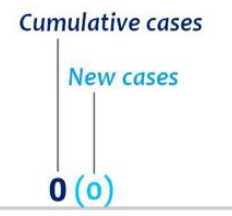
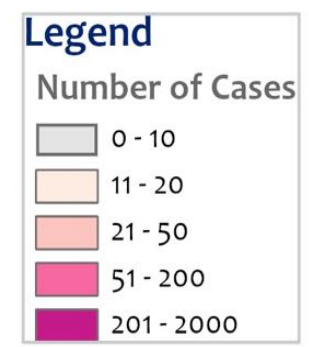
0 15 30 60 90 Km



Distribution of COVID-19 Cases by County in Liberia - May 16, 2021



Total cumulative cases:
2131
 Total new cases:
2



COVID-19 Cases by District in Liberia - May 16, 2021



Total Cases: 2131

Affected Counties	Cumulative Cases
Montserrado	1628
Margibi	103
Nimba	72
Grand Bassa	60
Bong	54
Lofa	45
River Gee	36
Maryland	34
Bomi	23
Grand Cape Mount	20
Grand Kru	18
Grand Gedeh	16
Gbarpolu	11
Sinoe	6
Rivercess	5

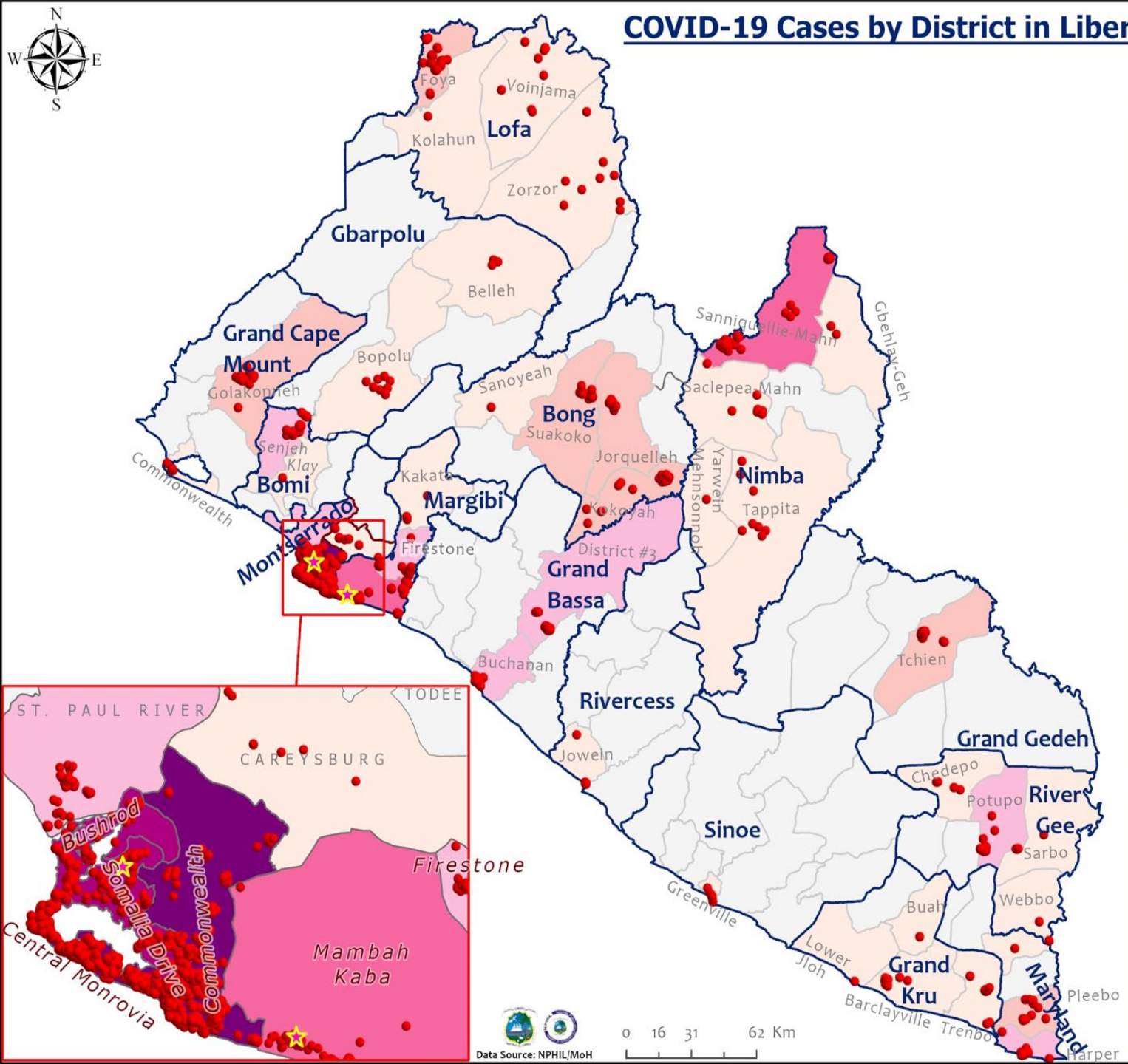
Legend

Case Status

- ★ New confirmed case
- Confirmed cases

Cases / District

- 0
- 1-10
- 11-20
- 21-50
- 51-100
- 101-200
- 201-600

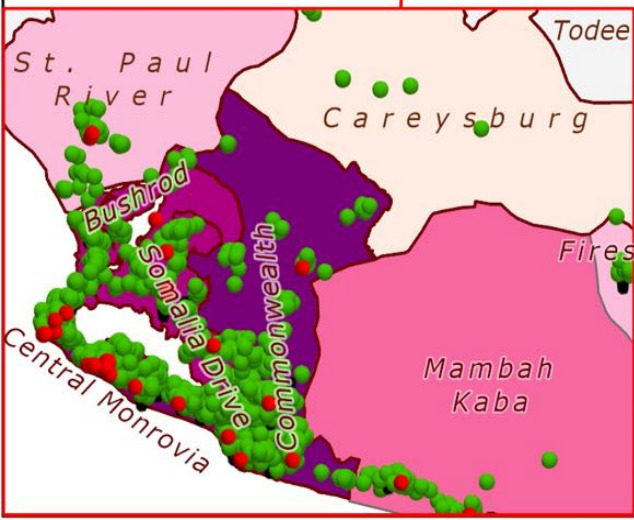
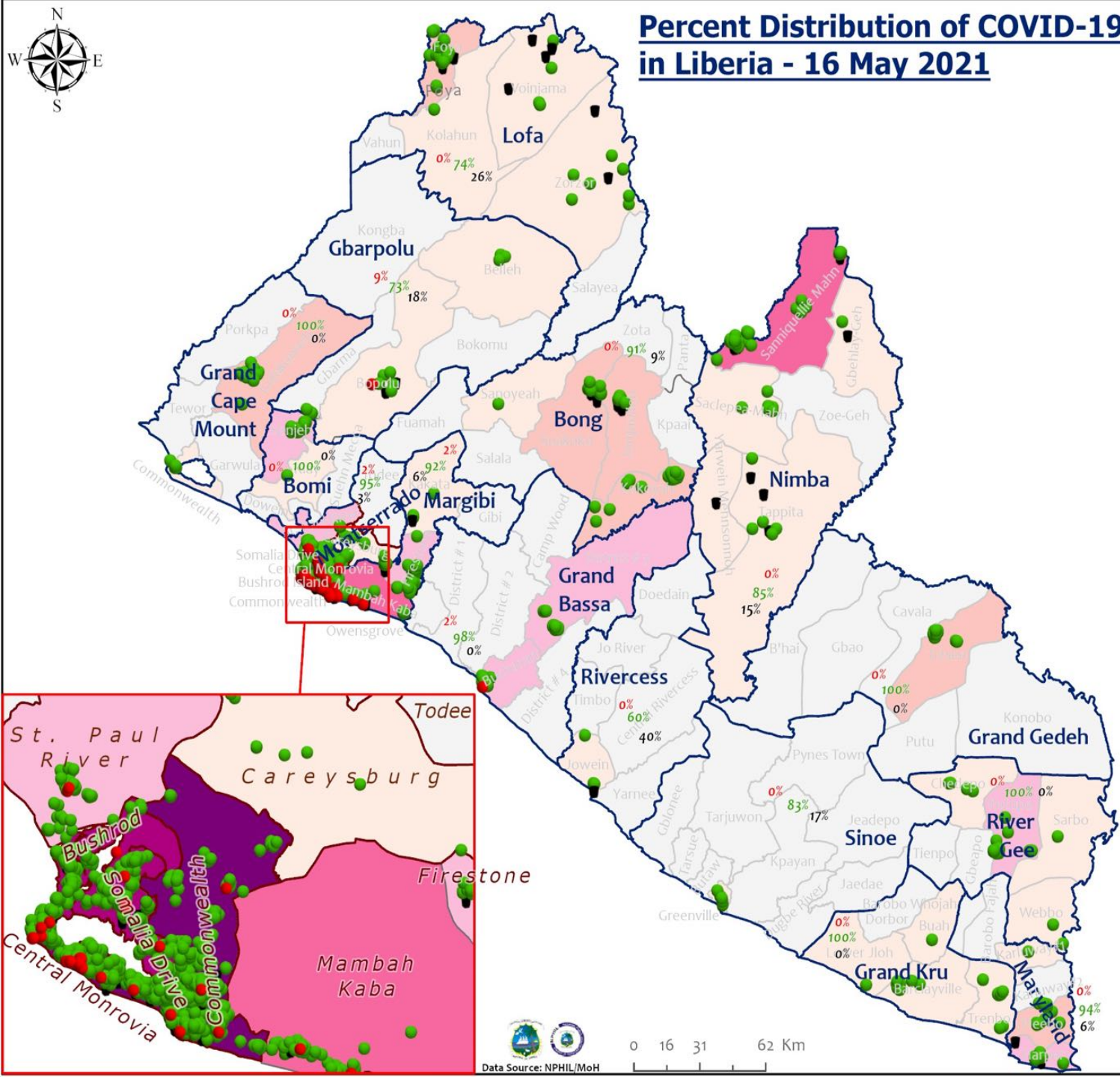


Percent Distribution of COVID-19 Cases by Status in Liberia - 16 May 2021



Total Cases: 2131

Affected Counties	Cumulative Cases
Montserrado	1628
Margibi	103
Nimba	72
Grand Bassa	60
Bong	54
Lofa	45
River Gee	36
Maryland	34
Bomi	23
Grand Cape Mount	20
Grand Kru	18
Grand Gedeh	16
Gbarpolu	11
Sinoe	6
Rivercess	5



Legend

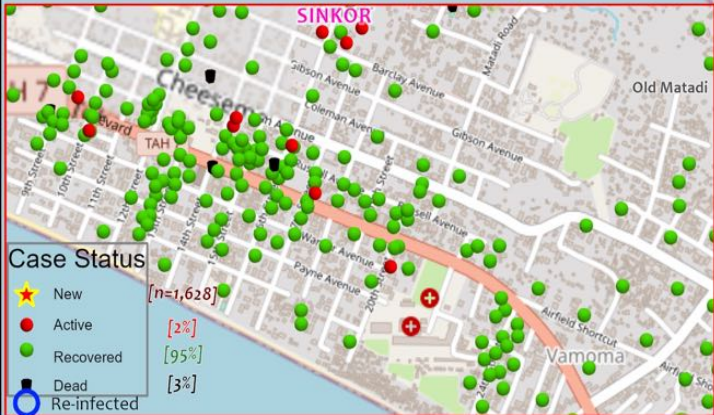
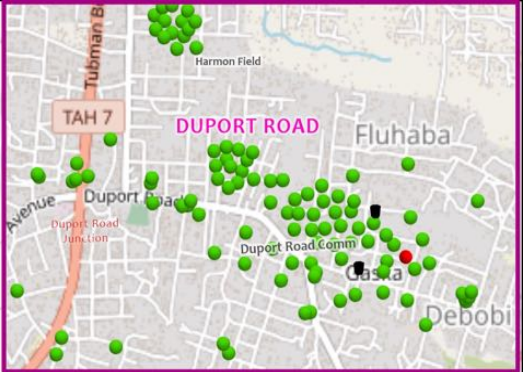
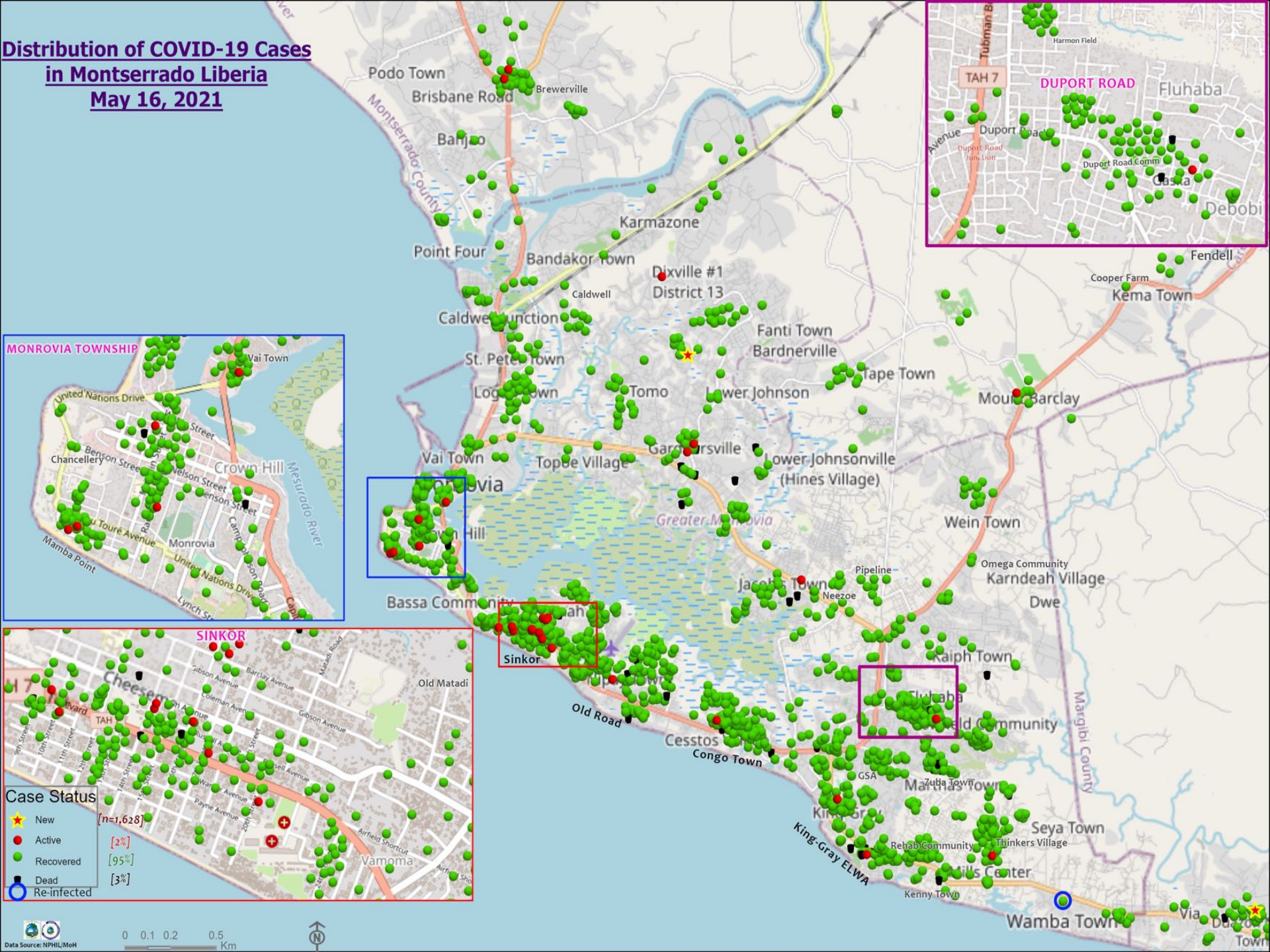
Case Status

- Active [2%]
- Recovered [94%]
- Dead [4%]

Cases / District

- 0
- 1-10
- 11-20
- 21-50
- 51-100
- 101-200
- 201-600

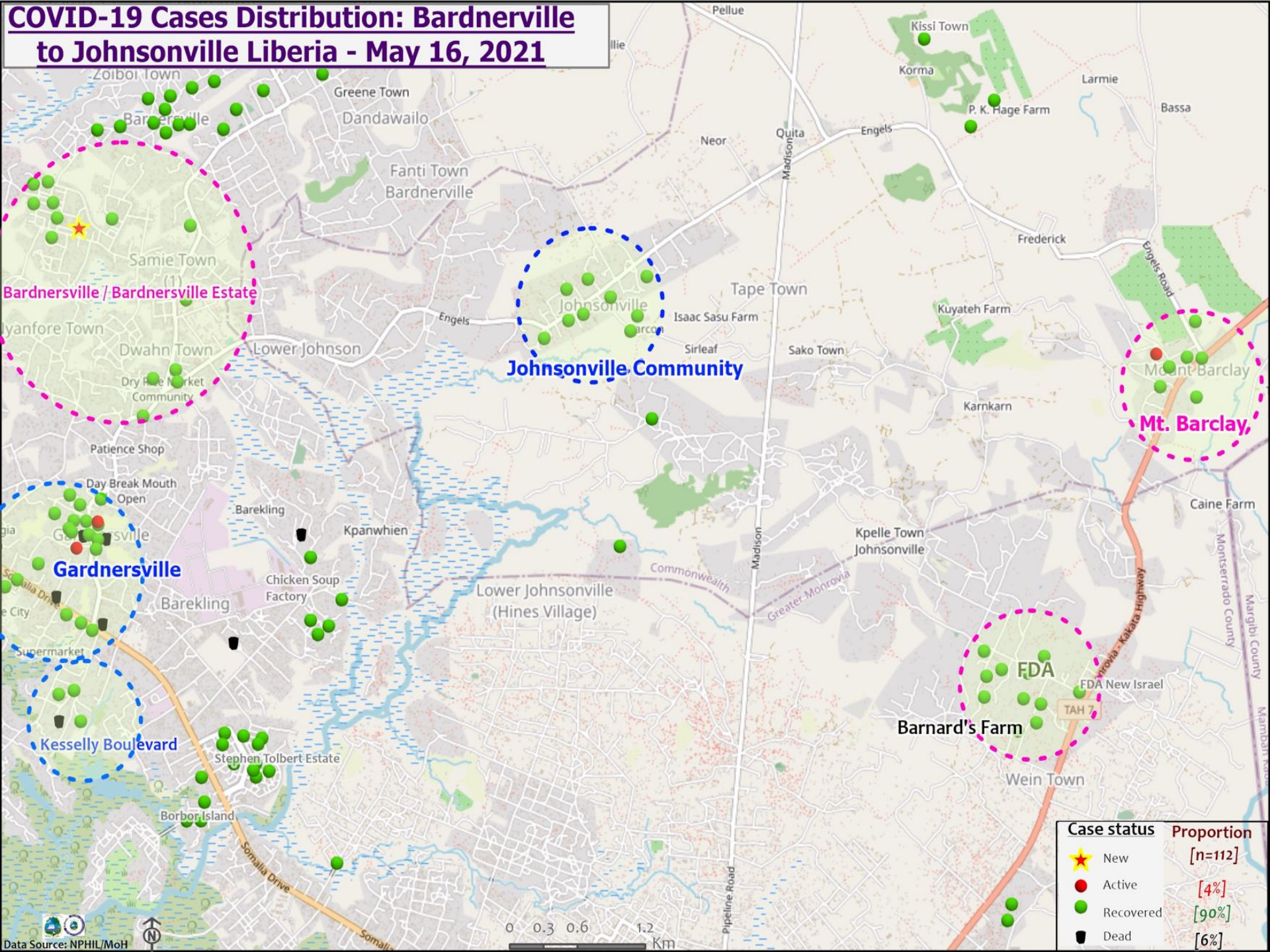
Distribution of COVID-19 Cases in Montserratido Liberia May 16, 2021



Case Status

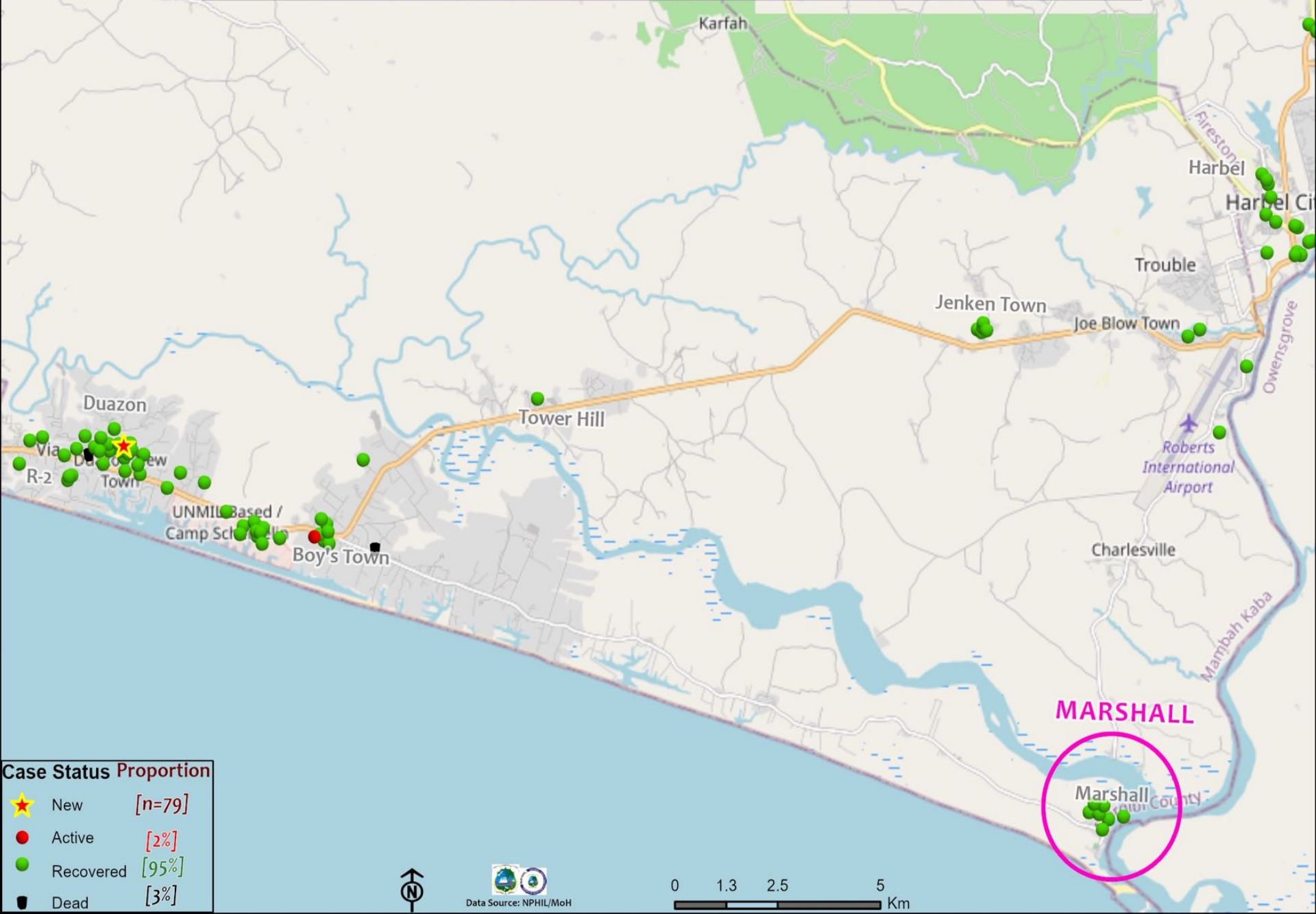
★	New	[n=1,628]
●	Active	[2%]
●	Recovered	[95%]
●	Dead	[3%]
○	Re-infected	

COVID-19 Cases Distribution: Bardnerville to Johnsonville Liberia - May 16, 2021



Case status	Proportion
★ New	[n=112]
● Active	[4%]
● Recovered	[90%]
■ Dead	[6%]

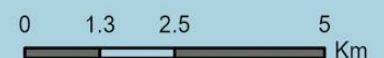
COVID-19 Cases Distribution: Scheffelin Township, Marshall City and Harbel, Margibi County, Liberia - May 16, 2021



Case Status Proportion	
★ New	[n=79]
● Active	[2%]
● Recovered	[95%]
● Dead	[3%]



Data Source: NPHIL/MoH



Summary of confirmed, recovered, active, and dead cases by reporting counties, Liberia, 16 March 2020 – 16 May 2021

County	Confirmed Cases		Recovered Cases		Active Cases	Dead Cases	
	New	Cum	New	Cum		New	Cum
Bomi	0	23	0	22	0	0	1
Bong	0	54	0	49	0	0	5
Gbarpolu	0	11	0	8	1	0	2
Grand Bassa	0	60	0	59	1	0	0
Grand Cape Mount	0	20	0	20	0	0	0
Grand Gedeh	0	16	0	16	0	0	0
Grand Kru	0	18	0	18	0	0	0
Lofa	0	45	0	34	0	0	11
Margibi	1	103	0	95	2	0	6
Maryland	0	34	0	32	0	0	2
Montserrado	1	1628	1	1558	26	0	44
Nimba	0	72	0	61	0	0	11
Rivercess	0	5	0	3	0	0	2
River Gee	0	36	0	36	0	0	0
Sinoe	0	6	0	5	0	0	1
National	2	2131	1	2016	30	0	85

Daily Summary Report at Treatment Units – 16 May 2021

Treatment Facility Name	New Admissions	Cumulative Admission	Daily Discharges	Cumulative Recoveries	Daily Deaths	Cumulative Deaths	Currently in treatment
Bomi LGH Treatment Unit	0	18	0	18	0	0	0
Bong Treatment Unit	0	26	0	26	0	0	0
Chief Jallahlone Hospital Treatment Unit	0	1	0	1	0	0	0
Grand Bassa Arcelor Mittal Treatment Unit	0	6	0	6	0	0	0
Grand Bassa LGH Treatment Unit	0	3	0	3	0	0	0
LAC Treatment Unit	0	42	0	42	0	0	0
Starbase Treatment Unit	0	648	0	637	0	9	2
Union Treatment Center	0	78	0	78	0	0	0
Duside Hospital Treatment Unit	0	42	0	40	0	2	0
Martha Tubman Hospital Treatment Unit	0	13	0	13	0	0	0
Rally Time Treatment Unit	0	4	0	4	0	0	0
Sasstown Treatment Unit	0	7	0	7	0	0	0
Behwan Treatment Unit	0	7	0	7	0	0	0
FJ Grante Hospital Treatment Unit	0	5	0	5	0	0	0
JJ Dossen Hospital Treatment Unit	0	9	0	9	0	0	0
Pleebo Health Center Treatment Unit	0	21	0	21	0	0	0
Tellewoyan Memorial Hospital Treatment Unit	0	13	0	13	0	0	0
Foya Borma Hospital Treatment Unit	0	12	0	12	0	0	0
Zorzor Treatment Unit	0	6	0	6	0	0	0
Robert Sport Treatment Unit	0	1	0	1	0	0	0
Ganta United Methodist Hospital Treatment Unit	0	1	0	1	0	0	0
Arcelor Mittal Yekepa Treatment Unit	0	12	0	12	0	0	0
Jackson F. Doe Treatment Unit	0	5	0	4	0	1	0
St. Frances Hospital Treatment Unit	0	2	0	2	0	0	0
Fish Town Hospital Treatment Unit	0	36	0	36	0	0	0
E&J Medical Center Treatment Unit	0	20	0	19	0	1	0
TOTAL	0	1038	0	1023	0	13	2

6 of the 8 persons admitted at Starbase tested negative for Covid-19 but are contacts of the positive case

Home-Base Care of COVID-19 Cases

County	New Admissions	Currently in Admissions	No. Followed-up (In-person/Phone)	Cumulative Admissions	New Recoveries	Cumulative Recoveries	Referrals to TU	Cumulative Referrals to TU	New Death	Cumulative Deaths
Montserratado	0	9	9	240	1	228	0	8	0	0
Grand Bassa				0						
Gbarpolu				0						
Margibi				0						
Total:	0	9	9	240	1	228	0	8	0	0

Laboratory Samples Evaluated – 16 May 2021

County	Sample Evaluated	New Positive	Repeat Positive	Initial Negative	Repeat Test Negative	Pending Lab Result
Bong	8	0	0	8	0	0
Grand Bassa	8	0	0	8	0	0
Grand Cape Mount	2	0	0	2	0	0
Margibi	24	1	0	23	0	0
Maryland	1	0	0	1	0	0
Montserrado	431	1	2	416	0	12
Nimba	6	0	0	6	0	0
TOTAL	480	2	2	464	0	12
Outgoing Traveler	255	2	1	240	0	12
Incoming Traveler	218	0	0	218	0	0
Voluntary	7	0	1	6	0	0
NRL	480	2	2	464	0	12
UN Clinic Lab	0	0	0	0	0	0

Incoming Travelers Testing Positive for COVID-19 (May 2021)

Country of embarkment	Cases
USA	3
Ghana	2
Australia	1
Pakistan	1
Nigeria	1
UAE	1
Lebanon	1
Canada	1
India	1
Total	12

Occupation	Cases
Business	4
Student	2
PFM Consultant	1
Physician	1
Diplomat	1
Nurse Aide	1
Retired	1
Geologist	1
Total	12

Nationality	Cases
American	3
Liberian	2
Indian	2
Pakistani	1
Nigerian	1
Lebanese	1
Canadian	1
Australian	1
Total	12

Flight	Cases
Kenya Airways	3
ASKY	3
SN Brussels	3
Air France	2
AWA	1
Total	12

Summary of COVID-19 Daily PoE in Response Counties (16 May 2021)

Date of travel	Type of PoE	Point of Entry Name	Type of conveyance	# of Travelers Arrival	# of Travelers departure	# of travelers with elevated temp	Total Travelers screened		Total Passengers tested on Arrival	Total Foreign diplomat Exempted	# of Children under 5 years not tested	Passengers staying less than 5 days exempted	Total passengers in transit	Total Passengers from Indian	Total passports collected	Total # of Travelers	
							Male	Female									
16-May	Airport		Air Morac	0	0	0	0	0	0	0	0	0	0	0	0	0	
			Brussels	32	57	0	57	32	29	3	1	0	0	0	0	1	89
			AWA	26	26	0	34	18	25	1	0	0	0	0	0	0	52
			Air France	0	0	0	0	0	0	0	0	0	0	0	0	0	0
			Air Cote D'Ivoire	0	0	0	0	0	0	0	0	0	0	0	0	0	0
			DHL	0	0	0	0	0	0	0	0	0	0	0	0	0	0
			Kenya	0	0	0	0	0	0	0	0	0	0	0	0	0	0
			Asky	0	88	0	55	33	0	2	2	0	0	0	0	0	88
			Others (Special flight)	0	0	0	0	0	0	0	0	0	0	0	0	0	0
	James Spriggs Payne Airport	Flight	0	0	0	0	0	0	0	0	0	0	0	0	0	0	
	Land	Ganta Main	Land	0	0	0	0	0	0	0	0	0	0	0	0	0	
		Yekepa	Land	0	0	0	0	0	0	0	0	0	0	0	0	0	
		Lehgain	Land	0	0	0	0	0	0	0	0	0	0	0	0	0	
		Loguatu	Land	7	3	0	4	6	0	0	0	0	0	0	0	10	
		Gahnpa	Land	0	0	0	0	0	0	0	0	0	0	0	0	0	
		Wehyipa	Land	0	0	0	0	0	0	0	0	0	0	0	0	0	
		Bo Water Side	Land	43	59	0	29	73	0	0	0	0	0	0	0	102	
Seaport	Buchanan	Vessel	41	41	0	82	0	0	0	0	0	0	0	0	82		
	Freeport of Monrovia	Vessel	0	0	0	0	0	0	0	0	0	0	0	0	0		
Total:				149	274	0	261	162	54	6	3	0	0	0	1	423	

Summary of COVID-19 Contact Tracing in Response Counties

County	New Contacts Line listed	Cumulative Contacts	No. of Health Care Workers as Contacts	Cumulative no. of Health Care Workers as contacts	Contacts became a case	Cumulative contacts that became a case	Contacts Completed 14 Days	Cumulative Contacts Completing 14 Days	Contacts Under Follow-up	Contacts lost to Follow-up
Montserratado	0	5560	0	508	0	189	0	5488	10	3
Margibi	0	480	0	125	0	42	0	470	0	0
Grand Bassa	0	457	0	140	0	51	0	410	4	0
Sinoe	0	191	0	30	0	1	0	191	0	0
Lofa	0	758	0	103	0	34	0	726	0	0
Nimba	0	613	0	53	0	25	0	550	0	0
Bong	0	302	0	70	0	28	0	300	0	0
Gbarpolu	0	87	0	13	0	8	0	87	0	0
Grand Cape Mount	0	49	0	3	0	4	0	51	0	0
RiverGee	0	123	0	13	0	30	0	123	0	0
Maryland	0	208	0	28	0	19	0	136	0	0
Bomi	0	180	0	17	0	15	0	177	0	0
Rivercess	0	102	0	55	0	0	0	88	0	0
Grand Kru	0	333	0	131	0	17	0	330	0	0
Grand Gedeh	0	163	0	49	0	6	0	125	0	0
National	0	9606	0	1338	0	469	0	9252	14	3

Thank you for Listening