



Liberia COVID-19 Daily Sitrep 422 (May 12, 2021)

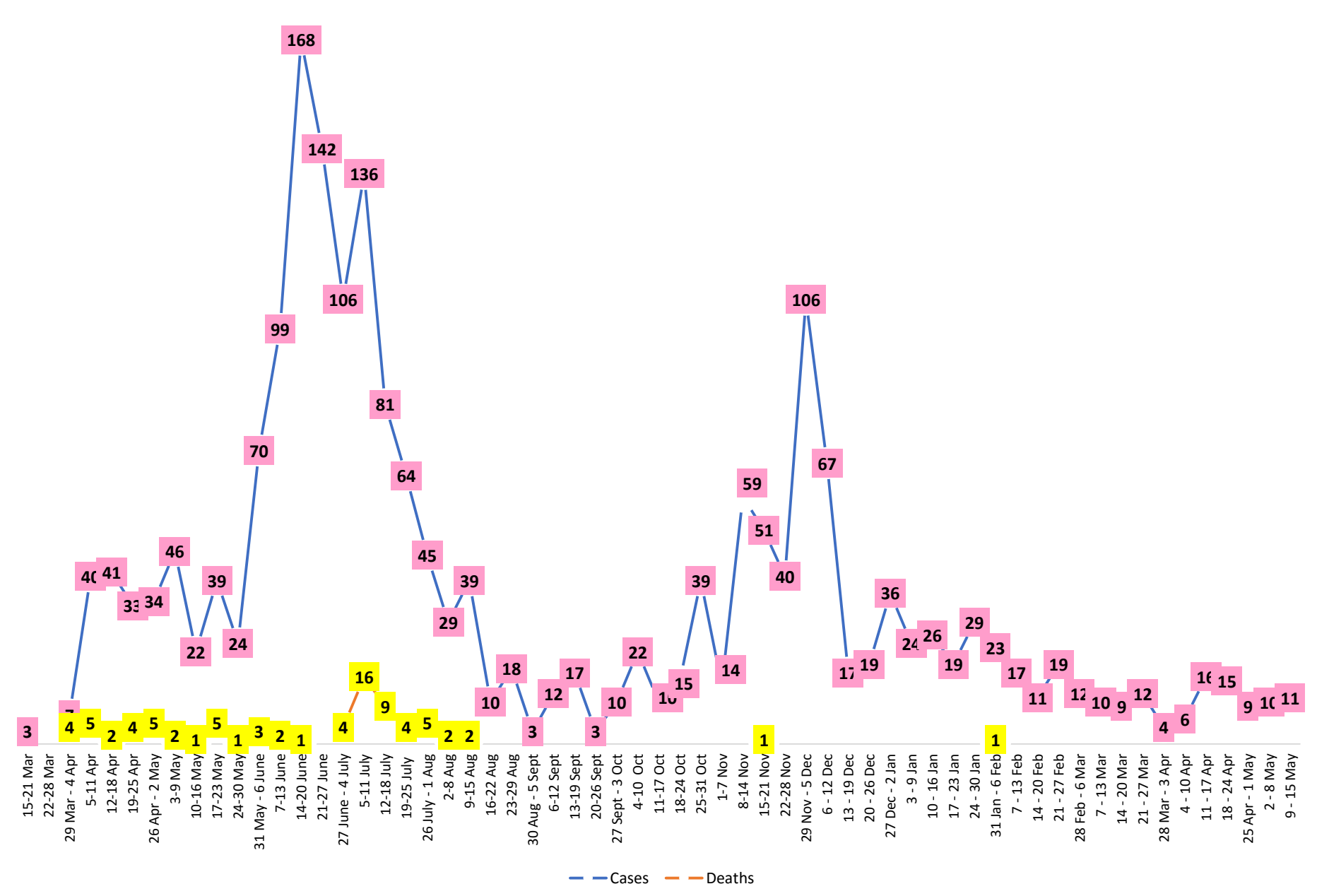
Summary of COVID-19 Cases by Reporting County, Liberia, 16 March 2020 – 12 May 2021

Bong	0	0	54
Gbarpolu	0	0	11
Grand Bassa	0	0	60
Grand Cape Mount	0	0	20
Grand Kru	0	0	18
Grand Gedeh	0	0	16
Lofa	0	0	45
Margibi	1	0	102
Maryland	0	0	34
Montserrado	2	0	1626
Nimba	0	0	72
Rivercess	0	0	5
River Gee	0	0	36
Sinoe	0	0	6
NATIONAL	3	0	2128

Demographic Breakdown (Gender & Age) of Confirmed COVID-19 Cases (16 March 2020 – 12 May 2021)

County	<15 years		15 - 34		35 - 54		55+		All ages		Total Confirmed
	M	F	M	F	M	F	M	F	M	F	
Bomi	2	2	3	5	7	3	0	1	12	11	23
Bong	3	1	4	6	20	9	8	3	35	19	54
Gbarpolu	1	2	0	2	4	1	1	0	6	5	11
Grand Bassa	11	2	9	11	13	8	4	2	37	23	60
Grand Cape Mount	0	0	11	0	8	0	1	0	20	0	20
Grand Kru	0	0	2	5	4	5	2	0	8	10	18
Grand Gedeh	0	1	1	2	7	3	2	0	10	6	16
Lofa	3	3	8	3	13	5	8	2	32	13	45
Margibi	6	4	15	13	28	12	16	8	65	37	102
Maryland	2	0	10	6	9	4	1	2	22	12	34
Montserrado	53	50	385	223	465	199	173	78	1076	550	1626
Nimba	1	4	15	10	28	6	5	3	49	23	72
Rivercess	0	0	2	3	0	0	0	0	2	3	5
River Gee	0	0	4	3	19	5	5	0	28	8	36
Sinoe	0	0	1	0	4	1	0	0	5	1	6
National	82	69	470	292	629	261	226	99	1407	721	2128

COVID-19 WEEKLY EPI-CURVE



Summary of COVID-19 Deaths by Reporting County, Liberia, 16 March 2020 – 12 May 2021

County	ew Suspected Deaths	COVID-19 Treatment Unit	Total in COVID-19 Treatment Unit	Health Facility	Total in Health Facility	Community	Total in Community	Confirmed Deaths on Contact List	Cumulative Deaths
Bomi	0	0	0	0	1	0	0	0	1
Bong	0	0	0	0	4	0	1	0	5
Gbarpolu	0	0	0	0	2	0	0	0	2
Grand Bassa	0	0	0	0	0	0	0	0	0
Grand Cape Mount	0	0	0	0	0	0	0	0	0
Grand Gedeh	0	0	0	0	0	0	0	0	0
Grand Kru	0	0	0	0	0	0	0	0	0
Lofa	0	0	0	0	6	0	5	0	11
Maryland	0	0	0	0	2	0	0	0	2
Margibi	0	0	2	0	4	0	0	0	6
Montserrado	0	0	9	0	19	0	16	0	43
Nimba	0	0	2	0	5	0	4	0	11
Rivercess	0	0	0	0	1	0	1	0	2
River Gee	0	0	0	0	0	0	0	0	0
Sinoe	0	0	0	0	1	0	0	0	1

The Liberia Case Fatality rate (CFR) officially considered is for deaths that occurred among patients in care at the COVID-19 treatment units across the country. As of 30 December 2020 , a total of 13 deaths have been recorded CFR=1.3%. The country is however keeping active surveillance on community deaths and deaths in non COVID-19 treatment health units.

Daily and Cumulative Healthcare Worker (HCW) COVID-19 Cases and Deaths by County, Liberia, 16 March 2020 – 12 May 2021

County	DAILY REPORT						CUMULATIVE CASES (ALIVE & DEAD)	
	New Suspected & High Risk Cases (Alive)			New Suspect Death	Laboratory Confirmed Cases	Confirmed Cases on Contact List	Confirmed	Deaths
	Suspect	High Risk	Total					
Bomi	0	0	0	0	0	0	5	0
Bong	0	0	0	0	0	0	19	3
Gbarpolu	0	0	0	0	0	0	1	0
Grand Bassa	0	0	0	0	0	0	21	0
Grand Gedeh	0	0	0	0	0	0	2	0
Grand Kru	0	0	0	0	0	0	14	0
Lofa	0	0	0	0	0	0	16	0
Margibi	0	0	0	0	0	0	12	1
Maryland	0	0	0	0	0	0	16	0
Montserrado	0	0	0	0	0	0	88	1
Nimba	0	0	0	0	0	0	14	0
Rivercess	0	0	0	0	0	0	3	0
River Gee	0	0	0	0	0	0	10	0
Sinoe	0	0	0	0	0	0	3	0
NATIONAL	0	0	0	0	0	0	224	5

Cadre Cases and Deaths by Health Care Workers (16 March 2020 – 12 May 2021)

Health Care Worker Cadre	Montserratado		Margibi		Nimba		River Gee		Sinoe		Grand Kru		Gbarpolu		Bong		Lofa		Grand Bassa		Maryland		Bomi		Rivercess		Grand Gedeh		National (Total)	
	Cases	Deaths	Cases	Deaths	Cases	Deaths	Cases	Deaths	Cases	Deaths	Cases	Deaths	Cases	Deaths	Cases	Deaths	Cases	Deaths	Cases	Deaths	Cases	Deaths	Cases	Deaths	Cases	Deaths	Cases	Deaths	Cases	Deaths
Doctors	17	0	1	0	0	0	1	0	0	0	0	0	0	0	1	0	0	0	1	0	0	0	0	0	0	0	0	21	0	
Pharmacists	4	0	0	0	0	0	0	0	0	0	0	0	0	0	0	0	0	0	0	0	0	0	0	0	0	0	0	4	0	
Nurses	23	1	2	0	2	0	5	0	0	0	2	0	1	1	12	1	8	0	5	0	1	0	1	0	0	0	0	62	3	
Nurse Aid	0	0	0	0	2	0	0	0	0	0	4	0	0	0	0	0	0	0	8	0	2	0	0	0	0	0	0	16	0	
Midwife	0	0	0	0	0	0	1	0	0	0	1	0	0	0	1	0	1	0	1	0	0	0	0	0	0	0	0	5	0	
Physician Assistants	8	0	1	0	1	0	1	0	0	0	1	0	0	0	0	0	1	0	1	0	0	0	0	0	0	0	0	14	0	
Lab Technician	9	0	1	0	2	0	0	0	1	0	1	0	0	0	0	0	2	0	0	0	10	0	0	0	3	0	0	29	0	
Environmental Health Technicians	5	0	0	0	0	0	0	0	0	0	0	0	0	0	0	0	0	0	0	0	0	0	0	0	0	0	0	5	0	
Dieticians	0	0	7	1	0	0	0	0	0	0	0	0	0	0	0	0	0	0	0	0	0	0	0	0	0	0	0	7	1	
Hospital Cleaner	1	0	0	0	0	0	0	0	0	0	1	0	0	0	1	0	0	0	1	0	2	0	0	0	0	0	0	6	0	
Others*	21	0	0	0	7	0	2	0	2	0	4	0	0	0	4	1	4	0	4	0	1	0	4	0	0	2	0	55	1	
Total:	88	1	12	1	14	0	10	0	3	0	14	0	1	1	19	2	16	0	21	0	16	0	5	0	3	0	2	0	224	5

***Others include the following:**

Radiologist, Microbiologist, Epidemiologist, Dispenser, Licensed Practical Nurse, Psychosocial worker, Hygienist, Logistician, Vaccinator, Ambulance Driver, Procurement Officer, Registrar, Accountant, Secretary, Hospital Administrator, Community Health Volunteer, GIS Specialist, EOC Coordinator

EPI-Curve of Confirmed Cases and Deaths

2128

2000

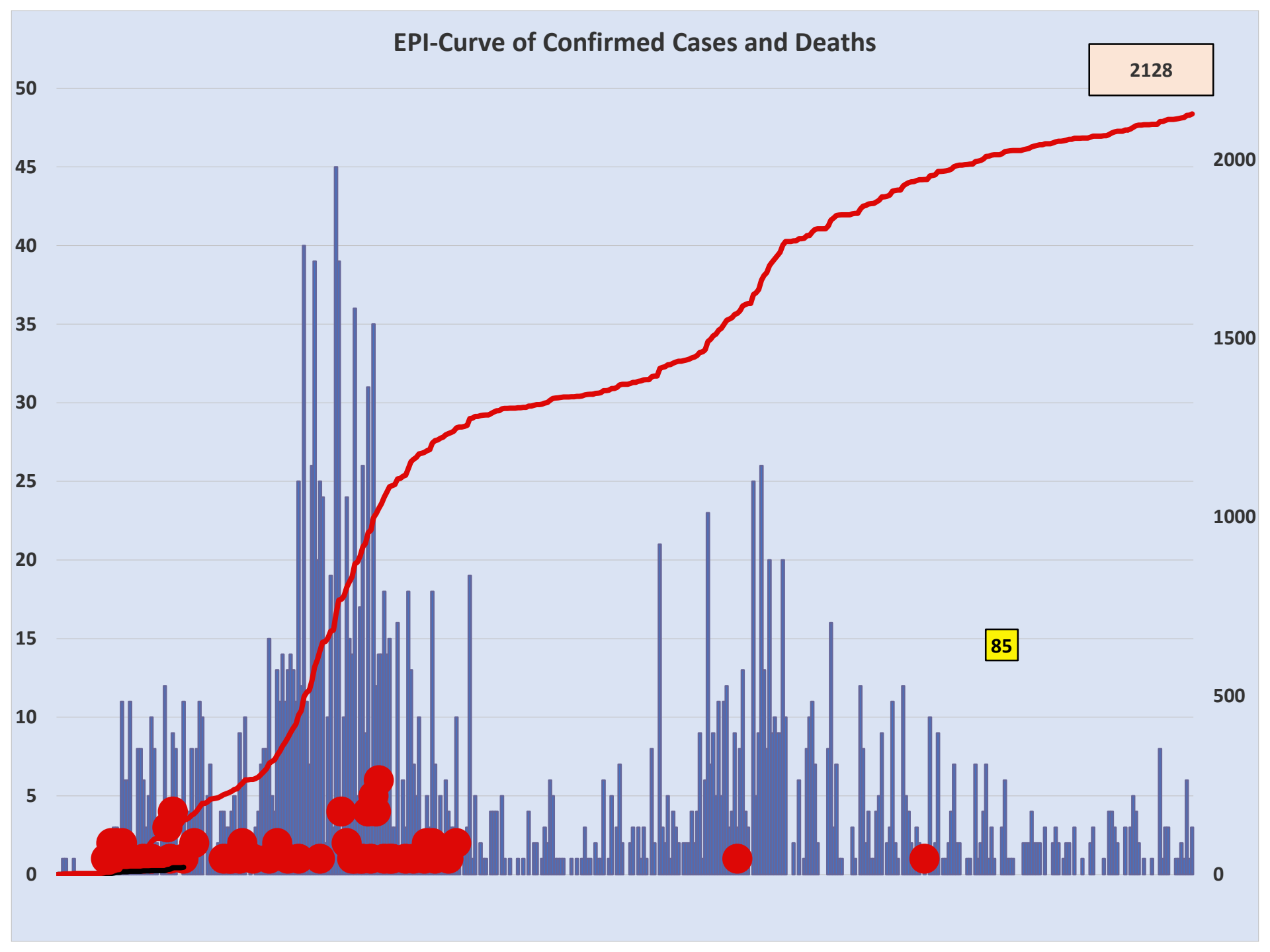
1500

1000

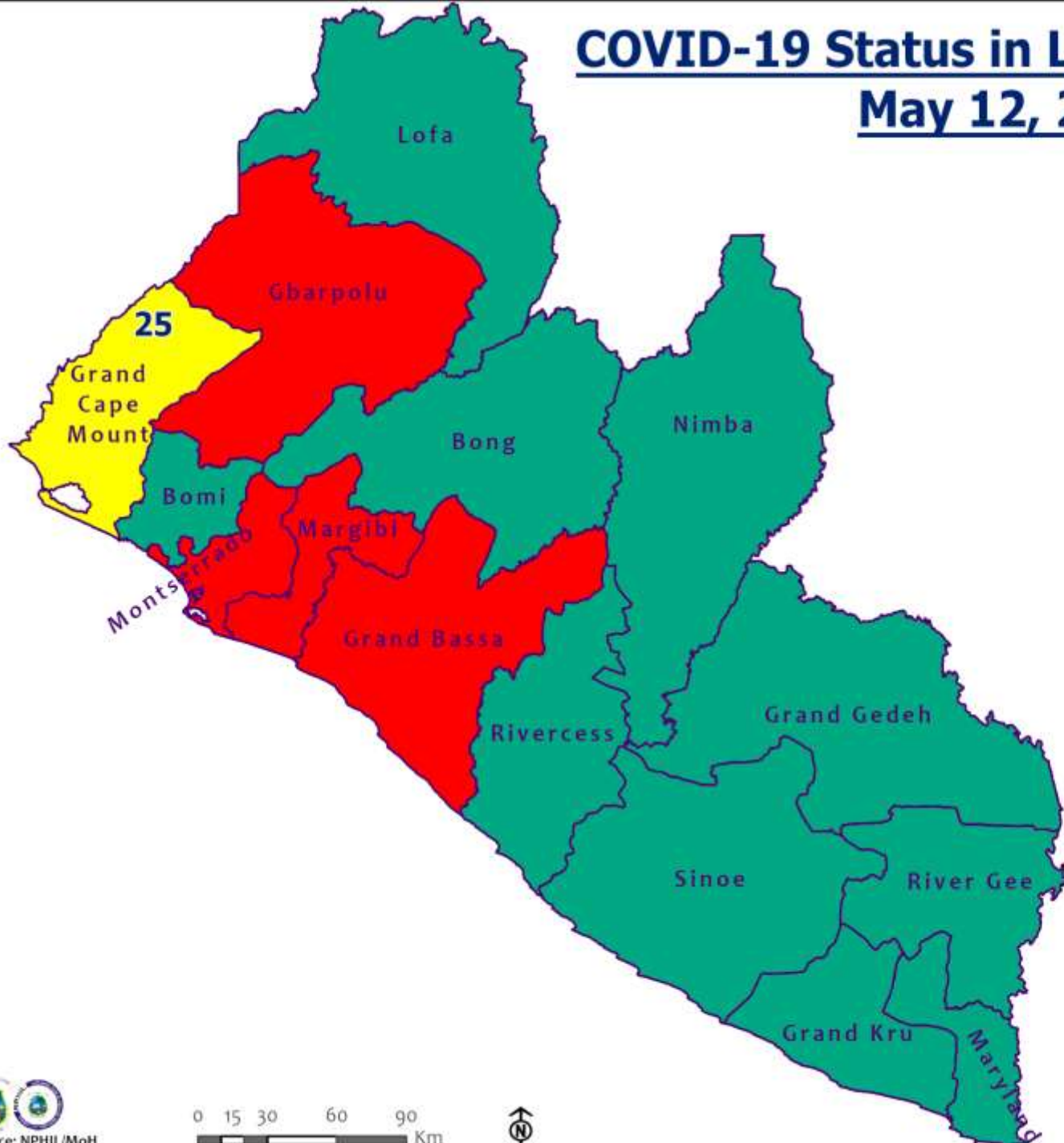
500

0

85



COVID-19 Status in Liberia by County May 12, 2021



Legend

County Status

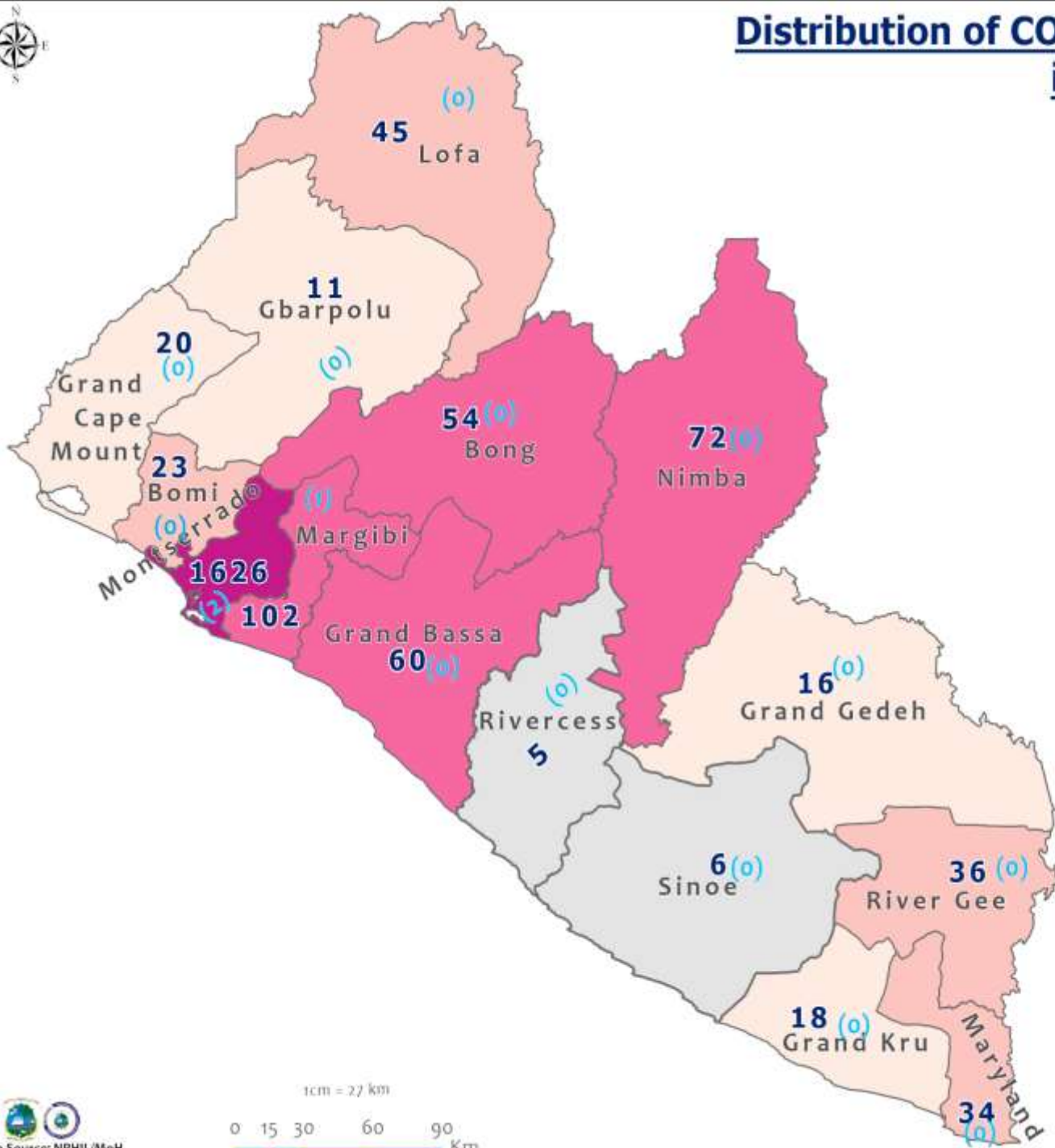
- Preparedness
- 28-Day Countdown
- Response



0 15 30 60 90 Km



Distribution of COVID-19 Cases by County in Liberia - May 12, 2021



Total cumulative cases:

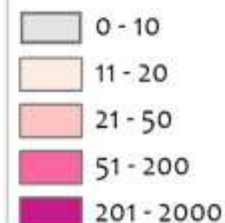
2128

Total new cases:

3

Legend

Number of Cases



Cumulative cases

New cases

0 (0)

1cm = 27 km

0 15 30 60 90 Km

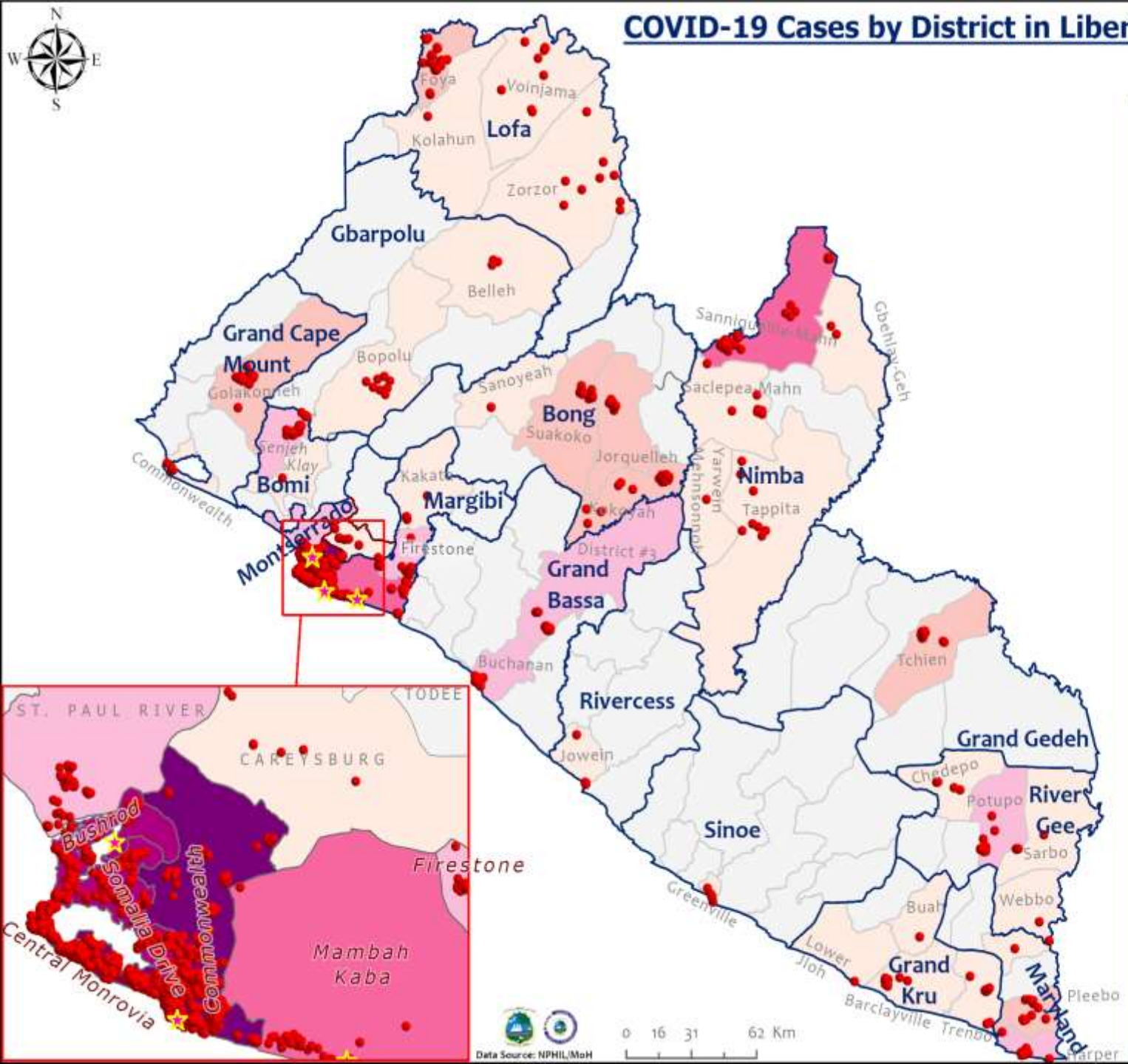


COVID-19 Cases by District in Liberia - May 12, 2021



Total Cases: 2128

Affected Counties	Cumulative Cases
Montserrado	1626
Margibi	102
Nimba	72
Grand Bassa	60
Bong	54
Lofa	45
River Gee	36
Maryland	34
Bomi	23
Grand Cape Mount	20
Grand Kru	18
Grand Gedeh	16
Gbarpolu	11
Sinoe	6
Rivercess	5



Legend

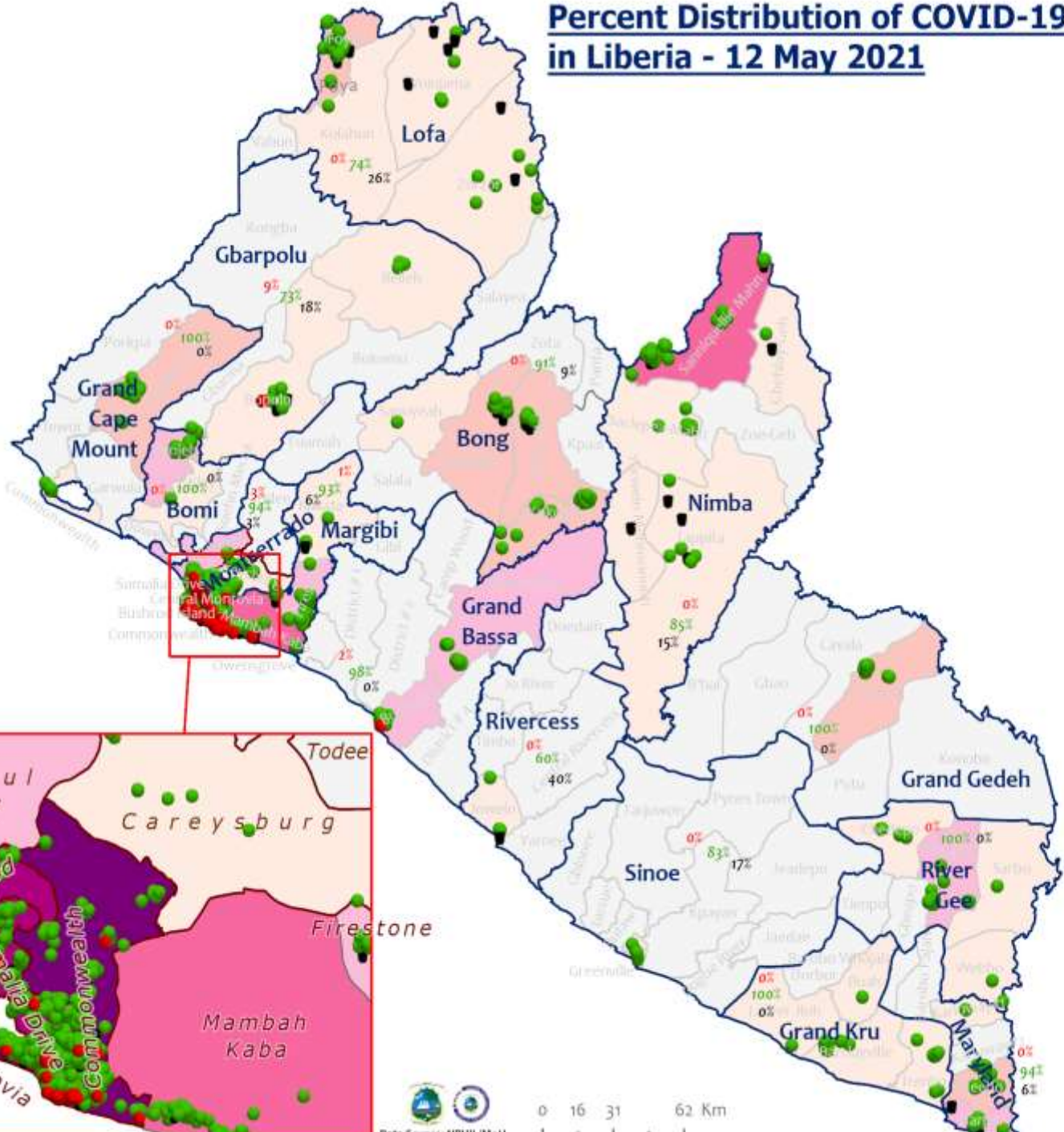
Case Status

- ★ New confirmed case
- Confirmed cases

Cases / District

- 0
- 1-10
- 11-20
- 21-50
- 51-100
- 101-200
- 201-600

Percent Distribution of COVID-19 Cases by Status in Liberia - 12 May 2021



Total Cases: 2128

Affected Counties	Cumulative Cases
Montserrado	1626
Margibi	102
Nimba	72
Grand Bassa	60
Bong	54
Lofa	45
River Gee	36
Maryland	34
Bomi	23
Grand Cape Mount	20
Grand Kru	18
Grand Gedeh	16
Gbarpolu	11
Sinoe	6
Rivercess	5

Legend

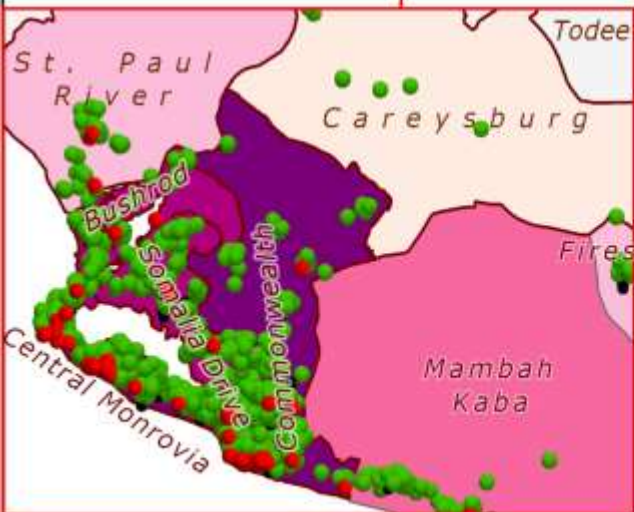
Case Status

- Active
- Recovered
- Dead

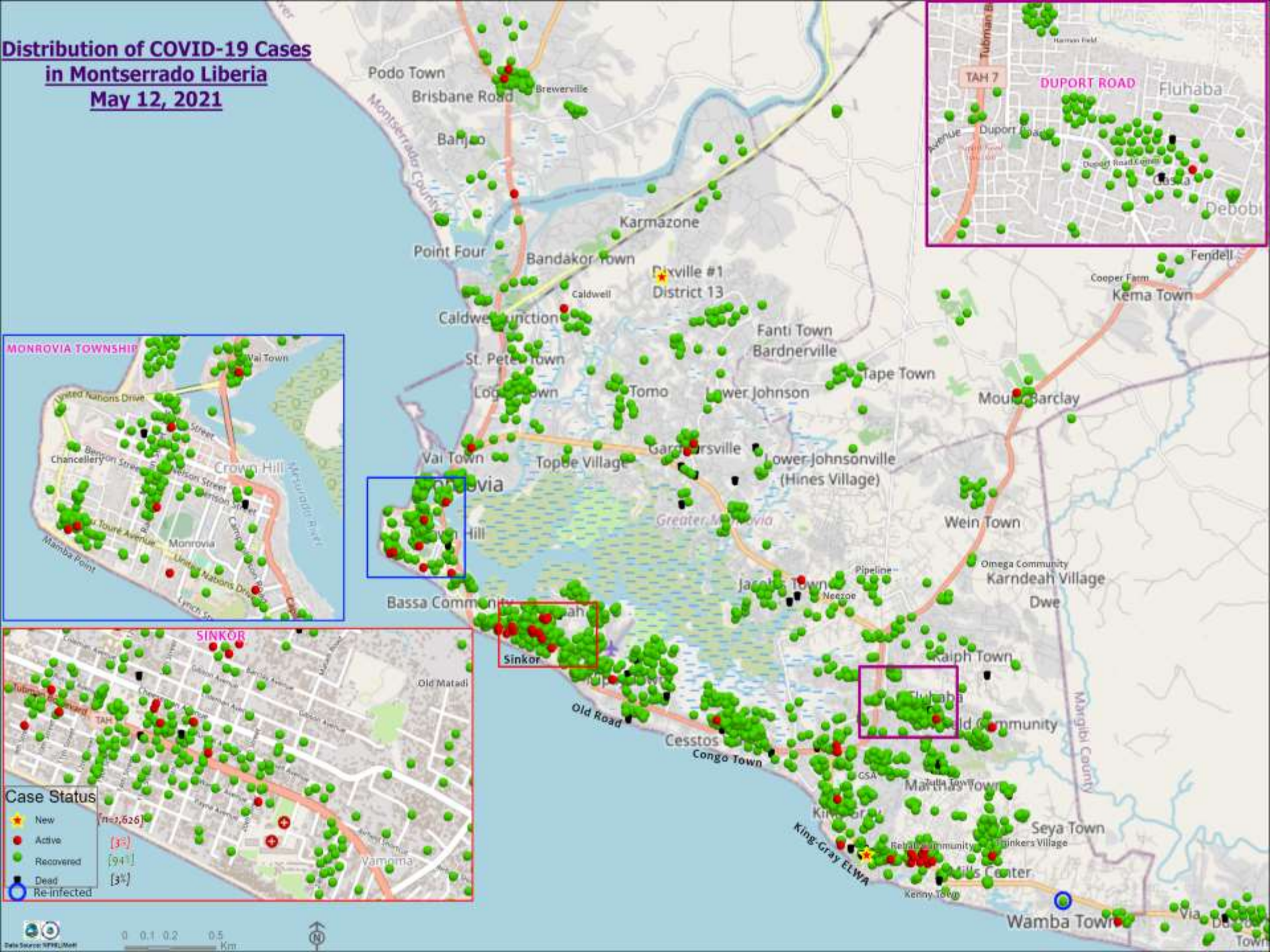
[3%]
[93%]
[4%]

Cases / District

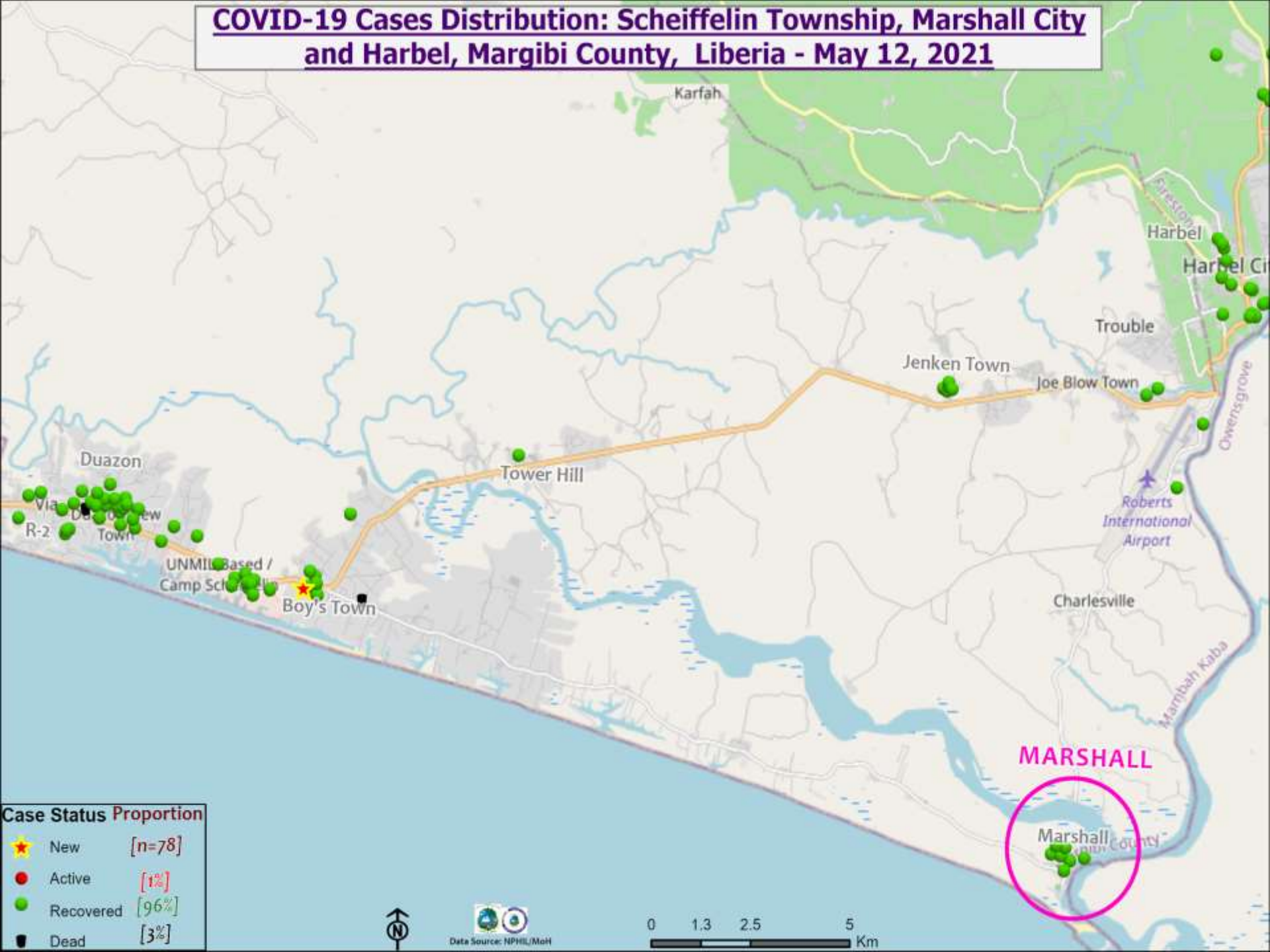
- 0
- 1-10
- 11-20
- 21-50
- 51-100
- 101-200
- 201-600



Distribution of COVID-19 Cases in Montserratado Liberia May 12, 2021



COVID-19 Cases Distribution: Scheffelin Township, Marshall City and Harbel, Margibi County, Liberia - May 12, 2021

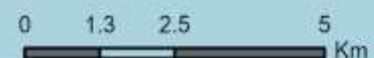


Case Status Proportion

★	New	[n=78]
●	Active	[1%]
●	Recovered	[96%]
■	Dead	[3%]



Data Source: NPHI/MoH



Summary of confirmed, recovered, active, and dead cases by reporting counties, Liberia, 16 March 2020 – 12 May 2021

County	Confirmed Cases		Recovered Cases		Active Cases	Dead Cases	
	New	Cum	New	Cum		New	Cum
Bomi	0	23	0	22	0	0	1
Bong	0	54	0	49	0	0	5
Gbarpolu	0	11	0	8	1	0	2
Grand Bassa	0	60	0	59	1	0	0
Grand Cape Mount	0	20	0	20	0	0	0
Grand Gedeh	0	16	0	16	0	0	0
Grand Kru	0	18	0	18	0	0	0
Lofa	0	45	0	34	0	0	11
Margibi	1	102	0	95	1	0	6
Maryland	0	34	0	32	0	0	2
Montserrado	2	1626	0	1557	25	0	44
Nimba	0	72	0	61	0	0	11
Rivercess	0	5	0	3	0	0	2
River Gee	0	36	0	36	0	0	0
Sinoe	0	6	0	5	0	0	1
National	3	2128	0	2015	28	0	85

Daily Summary Report at Treatment Units – 12 May 2021

Treatment Facility Name	New Admissions	Cumulative Admission	Daily Discharges	Cumulative Recoveries	Daily Deaths	Cumulative Deaths	Currently in treatment
Bomi LGH Treatment Unit	0	18	0	18	0	0	0
Bong Treatment Unit	0	26	0	26	0	0	0
Chief Jallahlone Hospital Treatment Unit	0	1	0	1	0	0	0
Grand Bassa Arcelor Mittal Treatment Unit	0	6	0	6	0	0	0
Grand Bassa LGH Treatment Unit	0	3	0	3	0	0	0
LAC Treatment Unit	0	42	0	42	0	0	0
Starbase Treatment Unit	0	648	0	637	0	9	2
Union Treatment Center	0	78	0	78	0	0	0
Duside Hospital Treatment Unit	0	42	0	40	0	2	0
Martha Tubman Hospital Treatment Unit	0	13	0	13	0	0	0
Rally Time Treatment Unit	0	4	0	4	0	0	0
Sasstown Treatment Unit	0	7	0	7	0	0	0
Behwan Treatment Unit	0	7	0	7	0	0	0
FJ Grante Hospital Treatment Unit	0	5	0	5	0	0	0
JJ Dossen Hospital Treatment Unit	0	9	0	9	0	0	0
Pleebo Health Center Treatment Unit	0	21	0	21	0	0	0
Tellewoyan Memorial Hospital Treatment Unit	0	13	0	13	0	0	0
Foya Borma Hospital Treatment Unit	0	12	0	12	0	0	0
Zorzor Treatment Unit	0	6	0	6	0	0	0
Robert Sport Treatment Unit	0	1	0	1	0	0	0
Ganta United Methodist Hospital Treatment Unit	0	1	0	1	0	0	0
Arcelor Mittal Yekepa Treatment Unit	0	12	0	12	0	0	0
Jackson F. Doe Treatment Unit	0	5	0	4	0	1	0
St. Frances Hospital Treatment Unit	0	2	0	2	0	0	0
Fish Town Hospital Treatment Unit	0	36	0	36	0	0	0
E&J Medical Center Treatment Unit	0	20	0	19	0	1	0
TOTAL	0	1038	0	1023	0	13	2

6 of the 8 persons admitted at Starbase tested negative for Covid-19 but are contacts of the positive case

Home-Base Care of COVID-19 Cases

County	New Admissions	Currently in Admissions	No. Followed-up (In-person/Phone)	Cumulative Admissions	New Recoveries	Cumulative Recoveries	Referrals to TU	Cumulative Referrals to TU	New Death	Cumulative Deaths
Montserratado	2	10	8	240	0	227	0	8	0	0
Grand Bassa				0						
Gbarpolu				0						
Margibi				0						
Total:	2	10	8	240	0	227	0	8	0	0

Laboratory Samples Evaluated – 12 May 2021

County	Sample Evaluated	New Positive	Repeat Positive	Initial Negative	Repeat Test Negative	Pending Lab Result
Bomi	1	0	0	1	0	0
Bong	9	0	0	9	0	0
Grand Bassa	4	0	0	4	0	0
Grand Cape Mount	21	0	0	21	0	0
Grand Gedeh	1	0	0	1	0	0
Lofa	2	0	0	2	0	0
Margibi	26	1	0	25	0	0
Montserrado	351	2	0	341	0	8
Nimba	2	0	0	2	0	0
River Gee	1	0	0	1	0	0
TOTAL	418	3	0	407	0	8
Outgoing Traveler	160	0	0	153	0	7
Incoming Traveler	252	3	0	249	0	0
Voluntary	6	0	0	5	0	1
NRL	410	3	0	399	0	8
UN Clinic Lab	8	0	0	8	0	0

Incoming Travelers Testing Positive for COVID-19 (May 12, 2021)

Country of embarkment	Cases
USA	3
Total	3

Nationality	Cases
American	3
Total	3

Occupation	Cases
Physician	1
Student	1
Retired	1
Total	3

Flight	Cases
SN Brussels	3
Total	3

Incoming Travelers Testing Positive for COVID-19 (May 2021)

Country of embarkment	Cases
USA	3
Ghana	2
Australia	1
Pakistan	1
Nigeria	1
UAE	1
Lebanon	1
Canada	1
India	1
Total	12

Occupation	Cases
Business	4
Student	2
PFM Consultant	1
Physician	1
Diplomat	1
Nurse Aide	1
Retired	1
Geologist	1
Total	12

Nationality	Cases
American	3
Liberian	2
Indian	2
Pakistani	1
Nigerian	1
Lebanese	1
Canadian	1
Australian	1
Total	12

Flight	Cases
Kenya Airways	3
ASKY	3
SN Brussels	3
Air France	2
AWA	1
Total	12

Summary of COVID-19 Contact Tracing in Response Counties

County	New Contacts Line listed	Cumulative Contacts	No. of Health Care Workers as Contacts	Cumulative no. of Health Care Workers as contacts	Contacts became a case	Cumulative contacts that became a case	Contacts Completed 14 Days	Cumulative Contacts Completing 14 Days	Contacts Under Follow-up	Contacts lost to Follow-up
Montserratado	1	5560	0	508	0	189	0	5483	15	3
Margibi	0	480	0	125	0	42	0	470	0	0
Grand Bassa	0	457	0	140	0	51	0	410	4	0
Sinoe	0	191	0	30	0	1	0	191	0	0
Lofa	0	758	0	103	0	34	0	726	0	0
Nimba	0	613	0	53	0	25	0	550	0	0
Bong	0	302	0	70	0	28	0	300	0	0
Gbarpolu	0	87	0	13	0	8	0	87	0	0
Grand Cape Mount	0	49	0	3	0	4	0	51	0	0
RiverGee	0	123	0	13	0	30	0	123	0	0
Maryland	0	208	0	28	0	19	0	136	0	0
Bomi	0	180	0	17	0	15	0	177	0	0
Rivercess	0	102	0	55	0	0	0	88	0	0
Grand Kru	0	333	0	131	0	17	0	330	0	0
Grand Gedeh	0	163	0	49	0	6	0	125	0	0
National	1	9606	0	1338	0	469	0	9247	19	3

Thank you for Listening