



Liberia COVID-19 Daily Sitrep 422 (May 11, 2021)

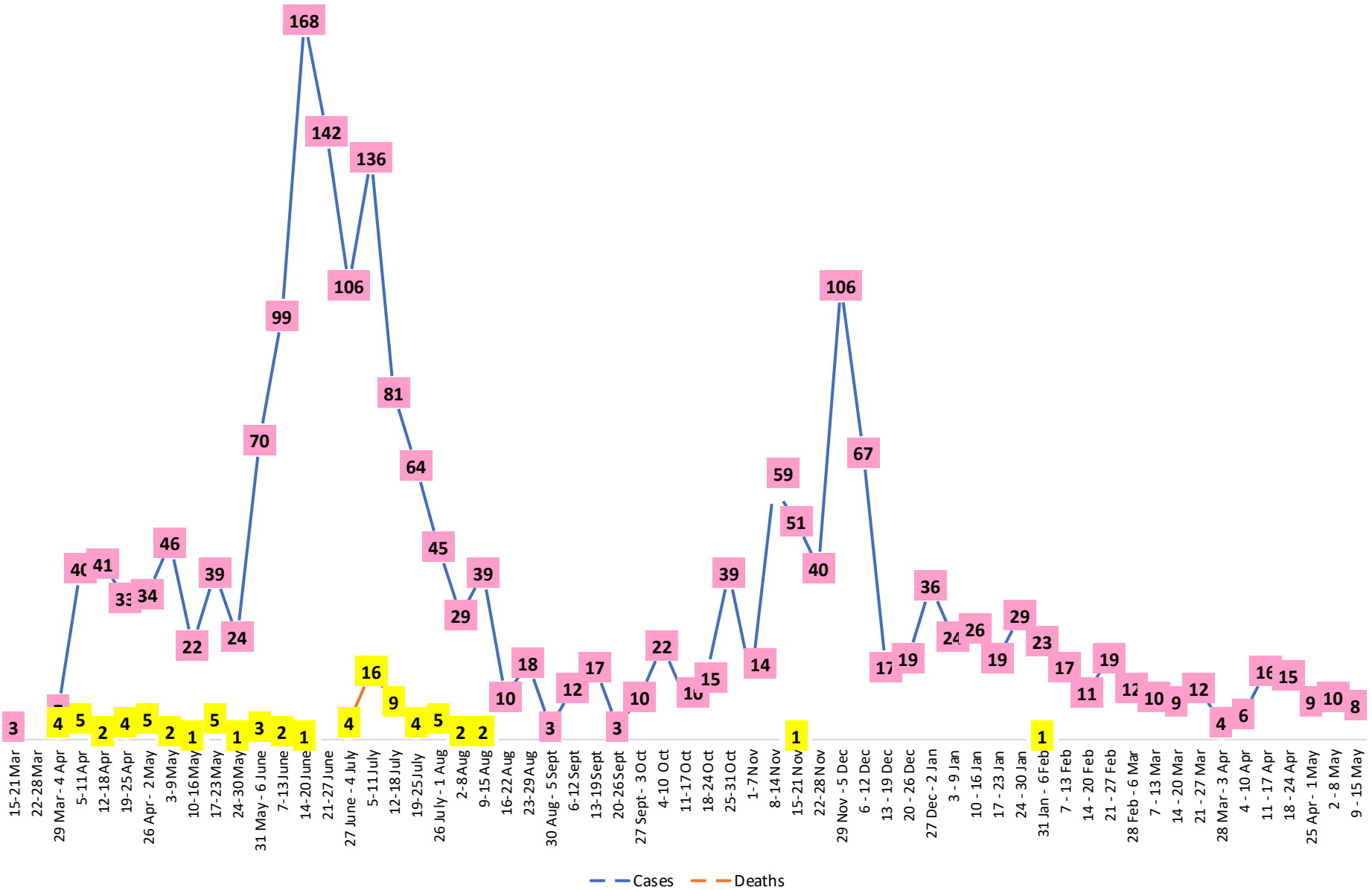
Summary of COVID-19 Cases by Reporting County, Liberia, 16 March 2020 – 11 May 2021

Bong	0	0	54
Gbarpolu	0	0	11
Grand Bassa	0	0	60
Grand Cape Mount	0	0	20
Grand Kru	0	0	18
Grand Gedeh	0	0	16
Lofa	0	0	45
Margibi	0	0	101
Maryland	0	0	34
Montserrado	1	0	1624
Nimba	0	0	72
Rivercess	0	0	5
River Gee	0	0	36
Sinoe	0	0	6
NATIONAL	1	0	2125

Demographic Breakdown (Gender & Age) of Confirmed COVID-19 Cases (16 March 2020 – 11 May 2021)

County	<15 years		15 - 34		35 - 54		55+		All ages		Total Confirmed
	M	F	M	F	M	F	M	F	M	F	
Bomi	2	2	3	5	7	3	0	1	12	11	23
Bong	3	1	4	6	20	9	8	3	35	19	54
Gbarpolu	1	2	0	2	4	1	1	0	6	5	11
Grand Bassa	11	2	9	11	13	8	4	2	37	23	60
Grand Cape Mount	0	0	11	0	8	0	1	0	20	0	20
Grand Kru	0	0	2	5	4	5	2	0	8	10	18
Grand Gedeh	0	1	1	2	7	3	2	0	10	6	16
Lofa	3	3	8	3	13	5	8	2	32	13	45
Margibi	6	4	15	13	28	12	15	8	64	37	101
Maryland	2	0	10	6	9	4	1	2	22	12	34
Montserrado	53	50	383	223	465	199	173	78	1074	550	1624
Nimba	1	4	15	10	28	6	5	3	49	23	72
Rivercess	0	0	2	3	0	0	0	0	2	3	5
River Gee	0	0	4	3	19	5	5	0	28	8	36
Sinoe	0	0	1	0	4	1	0	0	5	1	6
National	82	69	468	292	629	261	225	99	1404	721	2125

COVID-19 WEEKLY EPI-CURVE



Summary of COVID-19 Deaths by Reporting County, Liberia, 16 March 2020 – 11 May 2021

County	ew Suspected Deaths	COVID-19 Treatment Unit	Total in COVID-19 Treatment Unit	Health Facility	Total in Health Facility	Community	Total in Community	Confirmed Deaths on Contact List	Cumulative Deaths
Bomi	0	0	0	0	1	0	0	0	1
Bong	0	0	0	0	4	0	1	0	5
Gbarpolu	0	0	0	0	2	0	0	0	2
Grand Bassa	0	0	0	0	0	0	0	0	0
Grand Cape Mount	0	0	0	0	0	0	0	0	0
Grand Gedeh	0	0	0	0	0	0	0	0	0
Grand Kru	0	0	0	0	0	0	0	0	0
Lofa	0	0	0	0	6	0	5	0	11
Maryland	0	0	0	0	2	0	0	0	2
Margibi	0	0	2	0	4	0	0	0	6
Montserrado	0	0	9	0	19	0	16	0	43
Nimba	0	0	2	0	5	0	4	0	11
Rivercess	0	0	0	0	1	0	1	0	2
River Gee	0	0	0	0	0	0	0	0	0
Sinoe	0	0	0	0	1	0	0	0	1

The Liberia Case Fatality rate (CFR) officially considered is for deaths that occurred among patients in care at the COVID-19 treatment units across the country. As of 30 December 2020 , a total of 13 deaths have been recorded CFR=1.3%. The country is however keeping active surveillance on community deaths and deaths in non COVID-19 treatment health units.

Daily and Cumulative Healthcare Worker (HCW) COVID-19 Cases and Deaths by County, Liberia, 16 March 2020 – 11 May 2021

County	DAILY REPORT						CUMULATIVE CASES (ALIVE & DEAD)	
	New Suspected & High Risk Cases (Alive)			New Suspect Death	Laboratory Confirmed Cases	Confirmed Cases on Contact List	Confirmed	Deaths
	Suspect	High Risk	Total					
Bomi	0	0	0	0	0	0	5	0
Bong	0	0	0	0	0	0	19	3
Gbarpolu	0	0	0	0	0	0	1	0
Grand Bassa	0	0	0	0	0	0	21	0
Grand Gedeh	0	0	0	0	0	0	2	0
Grand Kru	0	0	0	0	0	0	14	0
Lofa	0	0	0	0	0	0	16	0
Margibi	0	0	0	0	0	0	12	1
Maryland	0	0	0	0	0	0	16	0
Montserrado	0	0	0	0	0	0	88	1
Nimba	0	0	0	0	0	0	14	0
Rivercess	0	0	0	0	0	0	3	0
River Gee	0	0	0	0	0	0	10	0
Sinoe	0	0	0	0	0	0	3	0
NATIONAL	0	0	0	0	0	0	224	5

Cadre Cases and Deaths by Health Care Workers (16 March 2020 – 11 May 2021)

Health Care Worker Cadre	Montserratado		Margibi		Nimba		River Gee		Sinoe		Grand Kru		Gbarpolu		Bong		Lofa		Grand Bassa		Maryland		Bomi		Rivercess		Grand Gedeh		National (Total)	
	Cases	Deaths	Cases	Deaths	Cases	Deaths	Cases	Deaths	Cases	Deaths	Cases	Deaths	Cases	Deaths	Cases	Deaths	Cases	Deaths	Cases	Deaths	Cases	Deaths	Cases	Deaths	Cases	Deaths	Cases	Deaths		
Doctors	17	0	1	0	0	0	1	0	0	0	0	0	0	0	1	0	0	0	1	0	0	0	0	0	0	0	0	21	0	
Pharmacists	4	0	0	0	0	0	0	0	0	0	0	0	0	0	0	0	0	0	0	0	0	0	0	0	0	0	0	4	0	
Nurses	23	1	2	0	2	0	5	0	0	0	2	0	1	1	12	1	8	0	5	0	1	0	1	0	0	0	0	62	3	
Nurse Aid	0	0	0	0	2	0	0	0	0	0	4	0	0	0	0	0	0	8	0	2	0	0	0	0	0	0	0	16	0	
Midwife	0	0	0	0	0	0	1	0	0	0	1	0	0	0	1	0	1	0	1	0	0	0	0	0	0	0	0	5	0	
Physician Assistants	8	0	1	0	1	0	1	0	0	0	1	0	0	0	0	0	1	0	1	0	0	0	0	0	0	0	0	14	0	
Lab Technician	9	0	1	0	2	0	0	0	1	0	1	0	0	0	0	2	0	0	0	0	10	0	0	0	3	0	0	29	0	
Environmental Health Technicians	5	0	0	0	0	0	0	0	0	0	0	0	0	0	0	0	0	0	0	0	0	0	0	0	0	0	0	5	0	
Dieticians	0	0	7	1	0	0	0	0	0	0	0	0	0	0	0	0	0	0	0	0	0	0	0	0	0	0	0	7	1	
Hospital Cleaner	1	0	0	0	0	0	0	0	0	0	1	0	0	0	1	0	0	0	1	0	2	0	0	0	0	0	0	6	0	
Others*	21	0	0	0	7	0	2	0	2	0	4	0	0	0	4	1	4	0	4	0	1	0	4	0	0	2	0	55	1	
Total:	88	1	12	1	14	0	10	0	3	0	14	0	1	1	19	2	16	0	21	0	16	0	5	0	3	0	2	0	224	5

***Others include the following:**

Radiologist, Microbiologist, Epidemiologist, Dispenser, Licensed Practical Nurse, Psychosocial worker, Hygienist, Logistician, Vaccinator, Ambulance Driver, Procurement Officer, Registrar, Accountant, Secretary, Hospital Administrator, Community Health Volunteer, GIS Specialist, EOC Coordinator

EPI-Curve of Confirmed Cases and Deaths

2125

2000

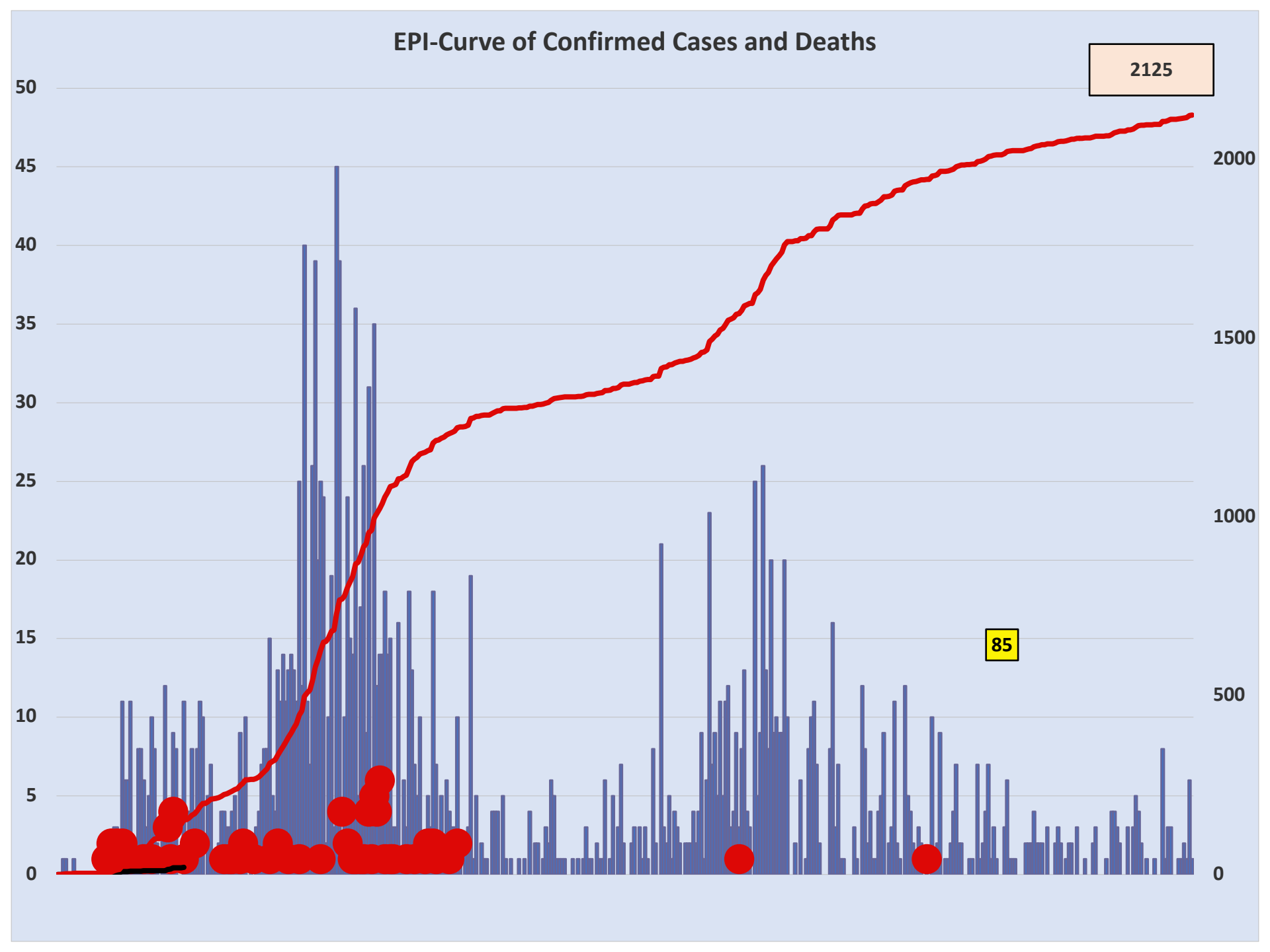
1500

1000

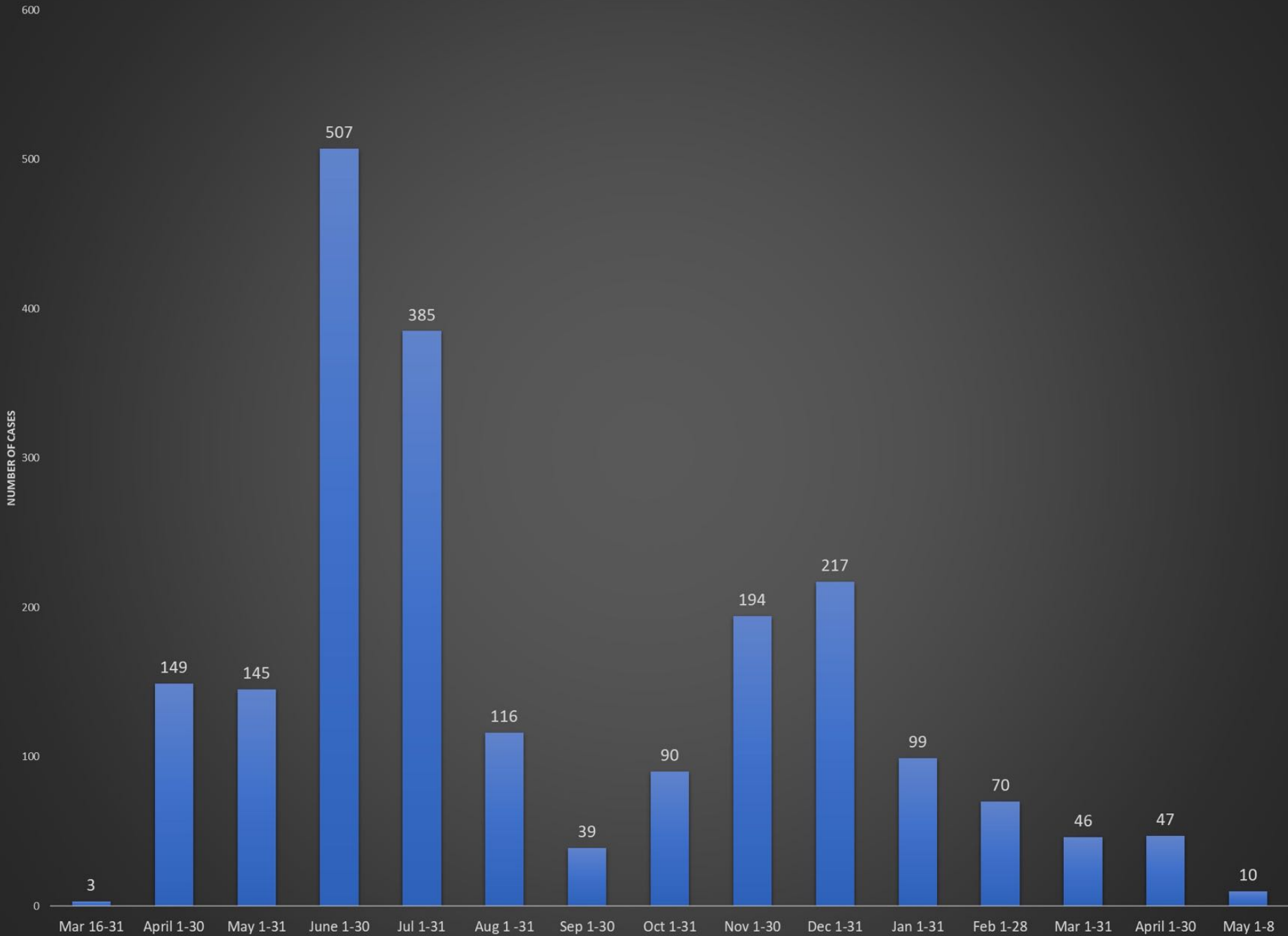
500

0

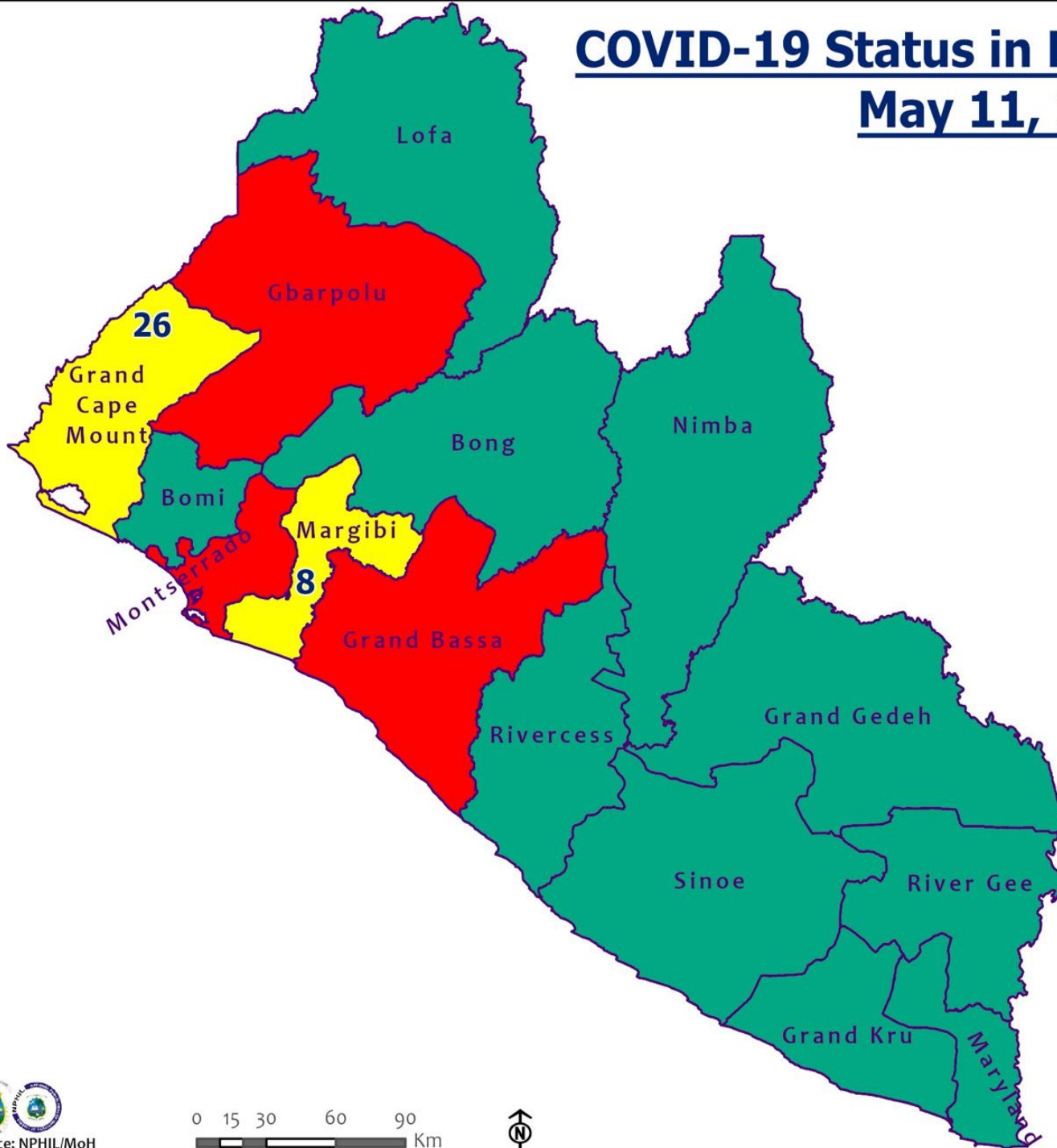
85



Full and Partial Monthly Confirmed COVID-19 Cases in Liberia - Mar 16, 2020 - May 8, 2021. (n =2117)



COVID-19 Status in Liberia by County May 11, 2021



Legend

County Status

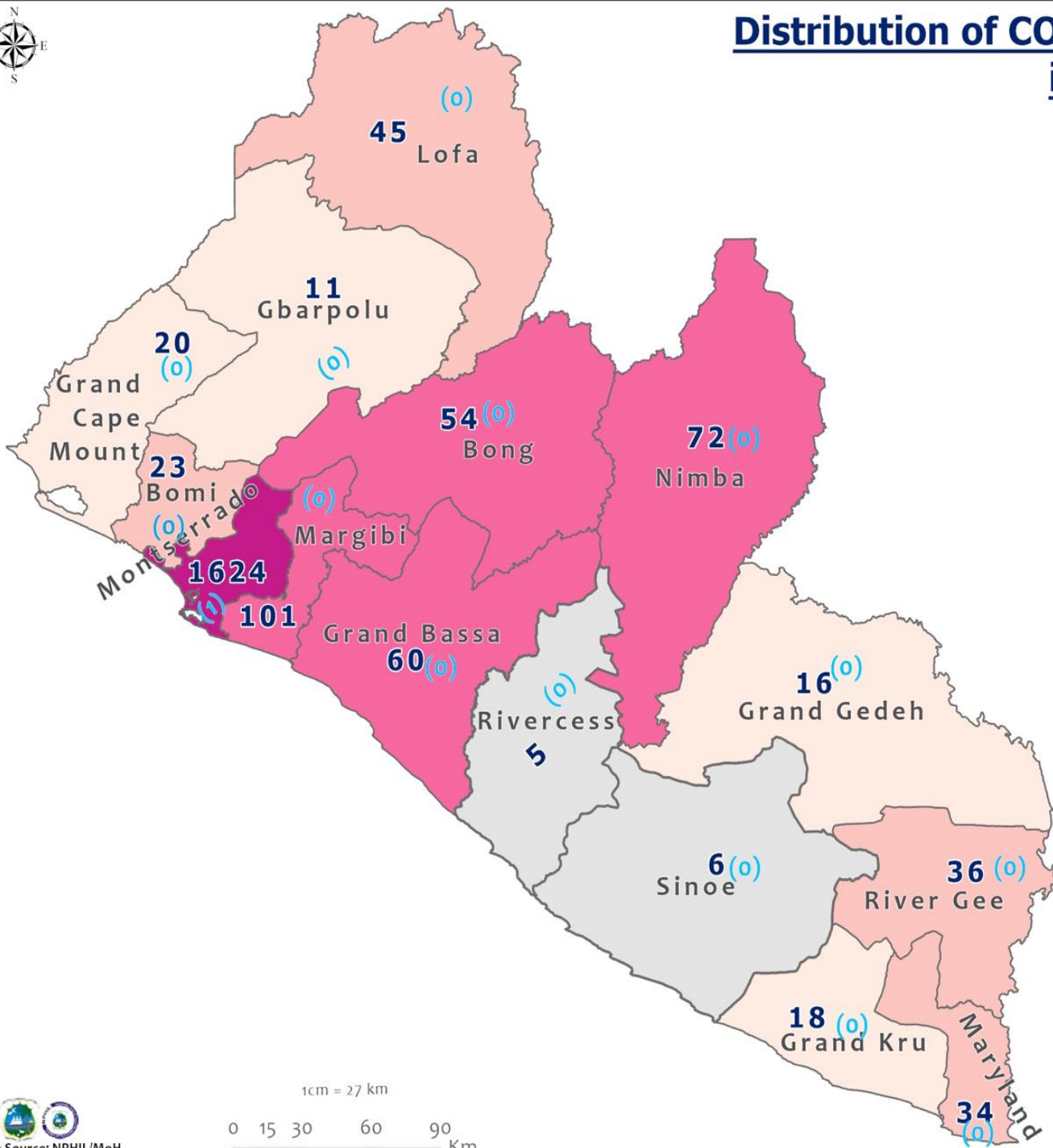
- Preparedness
- 28-Day Countdown
- Response



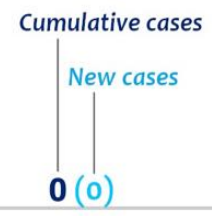
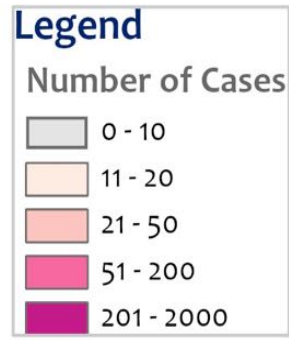
0 15 30 60 90
Km



Distribution of COVID-19 Cases by County in Liberia - May 11, 2021



Total cumulative cases:
2125
 Total new cases:
1



1cm = 27 km



COVID-19 Cases by District in Liberia - May 11, 2021



Total Cases: 2125

Affected Counties	Cumulative Cases
Montserrado	1624
Margibi	101
Nimba	72
Grand Bassa	60
Bong	54
Lofa	45
River Gee	36
Maryland	34
Bomi	23
Grand Cape Mount	20
Grand Kru	18
Grand Gedeh	16
Gbarpolu	11
Sinoe	6
Rivercess	5

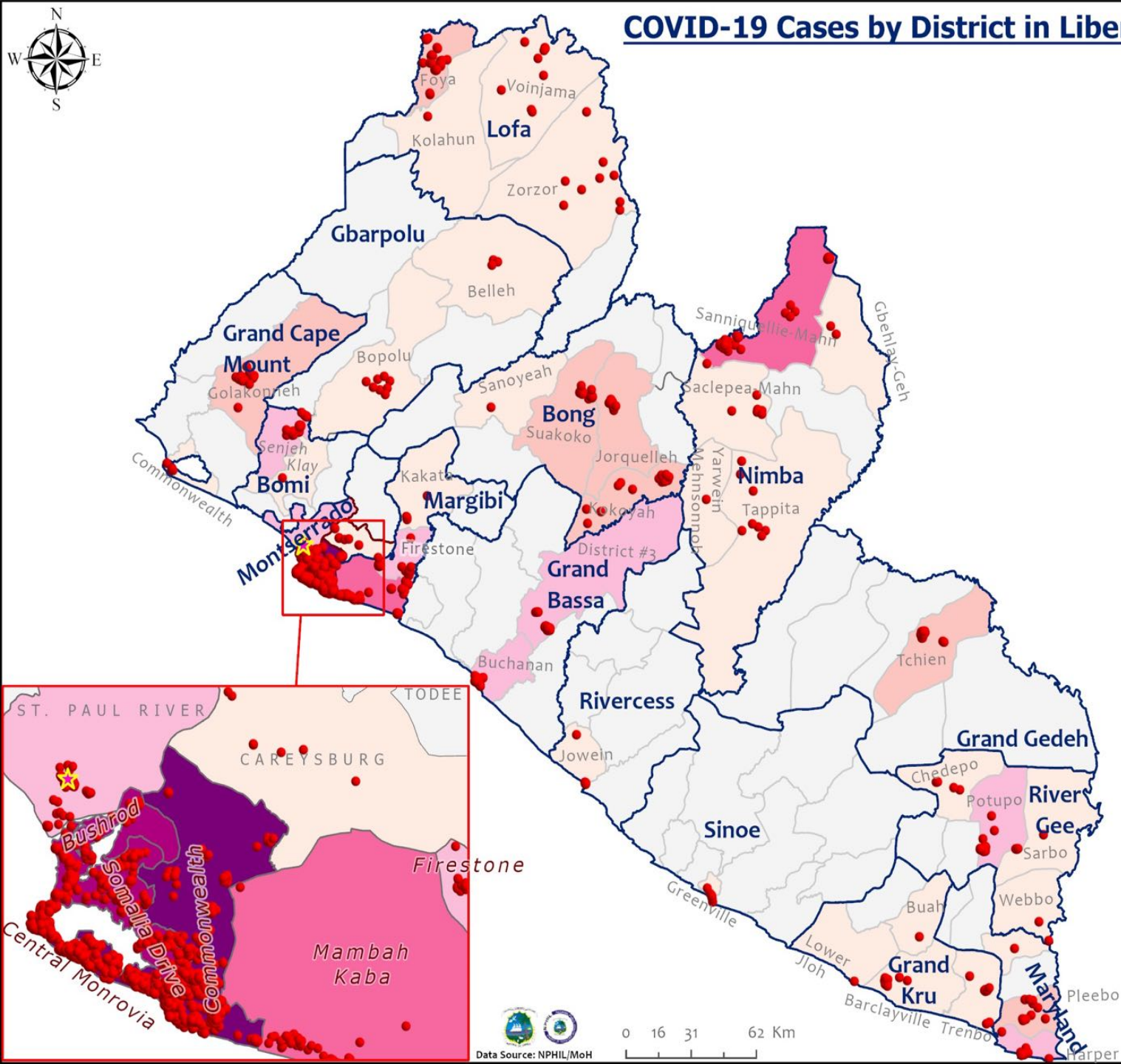
Legend

Case Status

- ★ New confirmed case
- Confirmed cases

Cases / District

- 0
- 1-10
- 11-20
- 21-50
- 51-100
- 101-200
- 201-600



Percent Distribution of COVID-19 Cases by Status in Liberia - 11 May 2021



Total Cases: 2125

Affected Counties	Cumulative Cases
Montserrado	1624
Margibi	101
Nimba	72
Grand Bassa	60
Bong	54
Lofa	45
River Gee	36
Maryland	34
Bomi	23
Grand Cape Mount	20
Grand Kru	18
Grand Gedeh	16
Gbarpolu	11
Sinoe	6
Rivercess	5

Legend

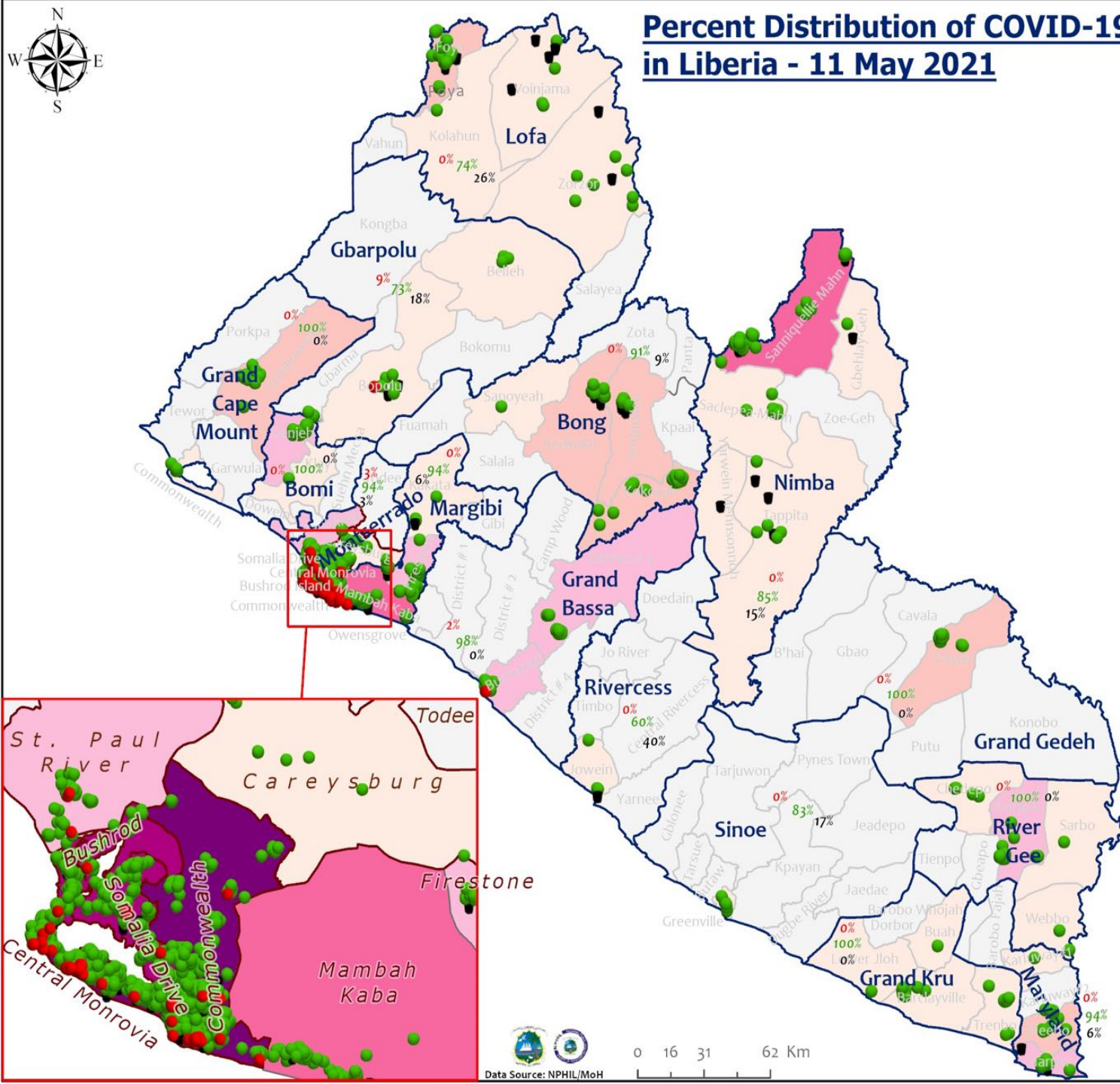
Case Status

- Active
- Recovered
- Dead

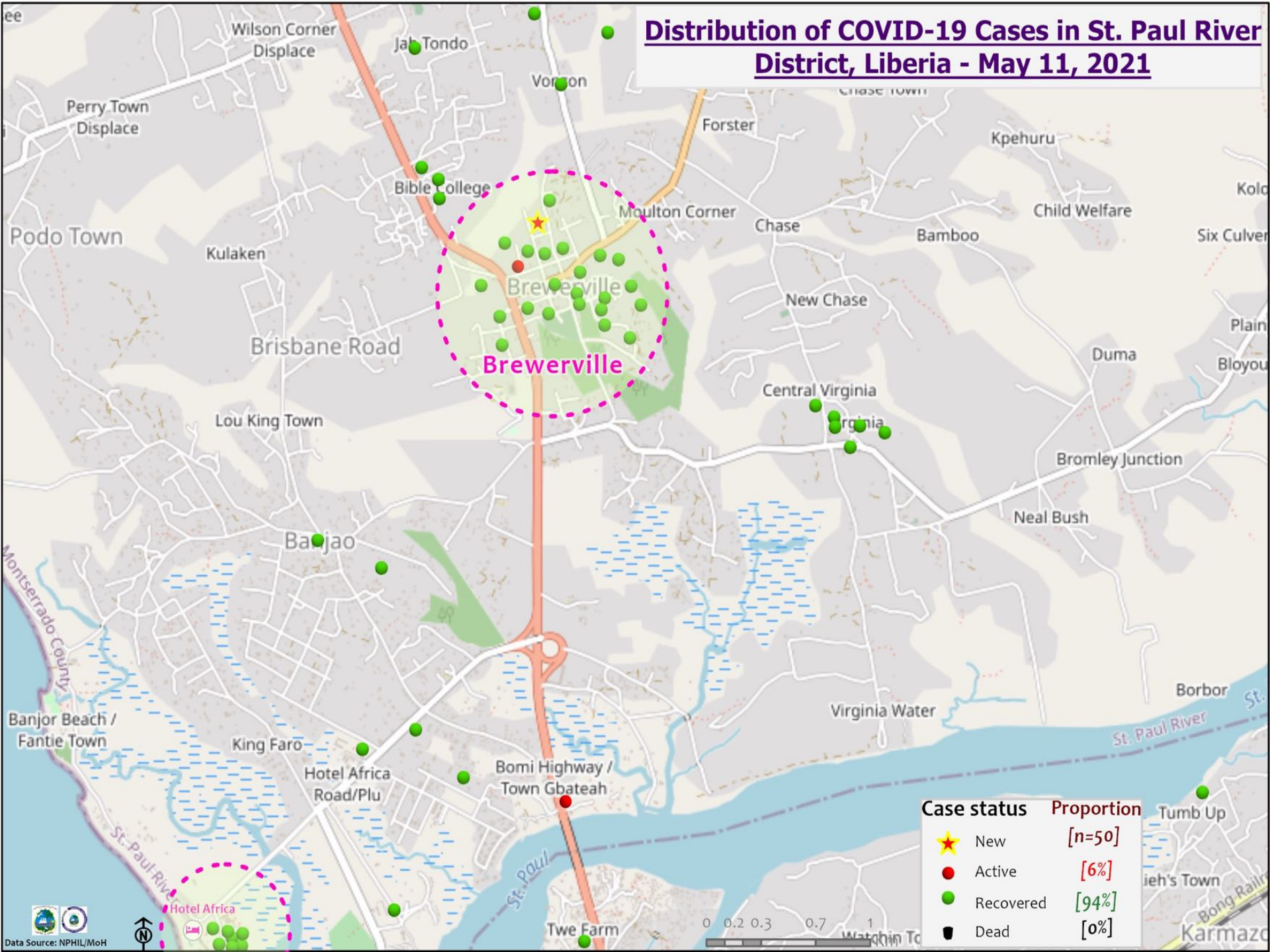
[3%]
[93%]
[4%]

Cases / District

- 0
- 1-10
- 11-20
- 21-50
- 51-100
- 101-200
- 201-600



Distribution of COVID-19 Cases in St. Paul River District, Liberia - May 11, 2021



Case status	Proportion
★ New	[n=50]
● Active	[6%]
● Recovered	[94%]
● Dead	[0%]

Summary of confirmed, recovered, active, and dead cases by reporting counties, Liberia, 16 March 2020 – 11 May 2021

County	Confirmed Cases		Recovered Cases		Active Cases	Dead Cases	
	New	Cum	New	Cum		New	Cum
Bomi	0	23	0	22	0	0	1
Bong	0	54	0	49	0	0	5
Gbarpolu	0	11	0	8	1	0	2
Grand Bassa	0	60	0	59	1	0	0
Grand Cape Mount	0	20	0	20	0	0	0
Grand Gedeh	0	16	0	16	0	0	0
Grand Kru	0	18	0	18	0	0	0
Lofa	0	45	0	34	0	0	11
Margibi	0	101	0	95	0	0	6
Maryland	0	34	0	32	0	0	2
Montserrado	1	1624	0	1507	73	0	44
Nimba	0	72	0	61	0	0	11
Rivercess	0	5	0	3	0	0	2
River Gee	0	36	0	36	0	0	0
Sinoe	0	6	0	5	0	0	1
National	1	2125	0	1965	75	0	85

Daily Summary Report at Treatment Units – 10 May 2021

Treatment Facility Name	New Admissions	Cumulative Admission	Daily Discharges	Cumulative Recoveries	Daily Deaths	Cumulative Deaths	Currently in treatment
Bomi LGH Treatment Unit	0	18	0	18	0	0	0
Bong Treatment Unit	0	26	0	26	0	0	0
Chief Jallahlone Hospital Treatment Unit	0	1	0	1	0	0	0
Grand Bassa Arcelor Mittal Treatment Unit	0	6	0	6	0	0	0
Grand Bassa LGH Treatment Unit	0	3	0	3	0	0	0
LAC Treatment Unit	0	42	0	42	0	0	0
Starbase Treatment Unit	2	648	0	637	0	9	2
Union Treatment Center	0	78	0	78	0	0	0
Duside Hospital Treatment Unit	0	42	0	40	0	2	0
Martha Tubman Hospital Treatment Unit	0	13	0	13	0	0	0
Rally Time Treatment Unit	0	4	0	4	0	0	0
Sasstown Treatment Unit	0	7	0	7	0	0	0
Behwan Treatment Unit	0	7	0	7	0	0	0
FJ Grante Hospital Treatment Unit	0	5	0	5	0	0	0
JJ Dossen Hospital Treatment Unit	0	9	0	9	0	0	0
Pleebo Health Center Treatment Unit	0	21	0	21	0	0	0
Tellewoyan Memorial Hospital Treatment Unit	0	13	0	13	0	0	0
Foya Borma Hospital Treatment Unit	0	12	0	12	0	0	0
Zorzor Treatment Unit	0	6	0	6	0	0	0
Robert Sport Treatment Unit	0	1	0	1	0	0	0
Ganta United Methodist Hospital Treatment Unit	0	1	0	1	0	0	0
Arcelor Mittal Yekepa Treatment Unit	0	12	0	12	0	0	0
Jackson F. Doe Treatment Unit	0	5	0	4	0	1	0
St. Frances Hospital Treatment Unit	0	2	0	2	0	0	0
Fish Town Hospital Treatment Unit	0	36	0	36	0	0	0
E&J Medical Center Treatment Unit	0	20	0	19	0	1	0
TOTAL	2	1038	0	1023	0	13	2

6 of the 8 persons admitted at Starbase tested negative for Covid-19 but are contacts of the positive case

Home-Base Care of COVID-19 Cases

Country	New Admissions	Currently in Admissions	No. Followed-up (In-person/Phone)	Cumulative Admissions	New Recoveries	Cumulative Recoveries	Referrals to TU	Cumulative Referrals to TU	New Death	Cumulative Deaths
Montserrat	0	8	8	238	0	227	0	8	0	0
Gbarpolu				0						
Grand Bassa				0						
Total:	0	8	8	238	0	227	0	8	0	0

Laboratory Samples Evaluated – 11 May 2021

County	Sample Evaluated	New Positive	Repeat Positive	Initial Negative	Repeat Test Negative	Pending Lab Result
Bong	6	0	0	6	0	0
Grand Bassa	3	0	0	3	0	0
Grand Cape Mount	6	0	0	6	0	0
Margibi	19	0	0	19	0	0
Montserrado	370	1	0	369	0	0
Nimba	3	0	0	3	0	0
TOTAL	407	1	0	406	0	0
Outgoing Traveler	179	0	0	179	0	0
Incoming Traveler	225	1	0	224	0	0
Voluntary	0	0	0	0	0	0
NRL	399	0	0	399	0	0
UN Clinic Lab	8	0	0	8	0	0

Incoming Travelers Testing Positive for COVID-19 (May 11, 2021)

Country of embarkment	Cases
Canada	1
Total	1

Nationality	Cases
Canadian	1
Total	1

Occupation	Cases
Nurse Aide	1
Total	1

Flight	Cases
Air France	1
Total	1

Incoming Travelers Testing Positive for COVID-19 (May 2021)

Country of embarkment	Cases
Australia	1
Ghana	2
Pakistan	1
Nigeria	1
UAE	1
Lebanon	1
Canada	1
India	1
Total	9

Occupation	Cases
Business	4
PFM Consultant	1
Diplomat	1
Nurse Aide	1
Student	1
Geologist	1
Total	9

Nationality	Cases
Liberian	2
Indian	2
Pakistani	1
Nigerian	1
Lebanese	1
Canadian	1
Australian	1
Total	9

Flight	Cases
Kenya Airways	3
ASKY	3
AWA	1
Air France	2
Total	9

Summary of COVID-19 Daily PoE in Response Counties (11 May 2021)

Date of travel	Type of PoE	Point of Entry Name	Type of conveyance	# of Travelers Arrival	# of Travelers departure	# of travelers with elevated temp	Total Travelers screened		Total Passengers tested on Arrival	Total Foreign diplomat Exempted	# of Children under 5 years not tested	Passengers staying less than 5 days exempted	Total passengers in transit	Total passports collected	Total # of Travelers	
							Male	Female								
11-May	Airport		Air Morac	0	0	0	0	0	0	0	0	0	0	0	0	
			Brussels	75	0	0	37	38	73	0	2	0	0	0	0	75
			AWA	18	17	0	17	18	9	9	0	0	0	0	1	35
			Air France	33	28	0	29	32	30	0	3	0	0	0	0	61
			Air Cote D'Ivoire	21	38	0	29	30	21	0	0	0	0	0	0	59
			DHL	0	0	0	0	0	0	0	0	0	0	0	0	0
			Kenya	0	0	0	0	0	0	0	0	0	0	0	0	0
			Askya	0	58	0	41	17	0	0	0	0	0	0	0	58
			Others (Special flight)	0	0	0	0	0	0	0	0	0	0	0	0	0
	James Spriggs Payne Airport	Flight	10	4	0	10	4	0	0	0	0	0	0	0	14	
	Land	Ganta Main	Land	17	43	0	28	32	0	0	0	0	0	0	60	
		Yekepa	Land	21	4	0	6	19	0	0	0	0	0	0	25	
		Lehgain	Land	5	4	0	3	6	0	0	0	0	0	0	9	
		Loguatu	Land	0	0	0	0	0	0	0	0	0	0	0	0	
		Gahnpa	Land	0	2	0	0	2	0	0	0	0	0	0	2	
Wehyipa		Land	6	8	0	5	9	0	0	0	0	0	0	14		
Bo Water Side		Land	28	79	0	34	73	0	0	0	0	0	0	107		
Seaport	Buchanan	Vessel	0	0	0	0	0	0	0	0	0	0	0	0		
	Freeport of Monrovia	Vessel	0	0	0	0	0	0	0	0	0	0	0	0		
Total:				234	285	0	239	280	133	9	5	0	0	1	519	

Summary of COVID-19 Contact Tracing in Response Counties

County	New Contacts Line listed	Cumulative Contacts	No. of Health Care Workers as Contacts	Cumulative no. of Health Care Workers as contacts	Contacts became a case	Cumulative contacts that became a case	Contacts Completed 14 Days	Cumulative Contacts Completing 14 Days	Contacts Under Follow-up	Contacts lost to Follow-up
Montserratado	0	5559	0	508	0	189	0	5483	14	3
Margibi	0	480	0	125	0	42	0	470	0	0
Grand Bassa	0	457	0	140	0	51	0	410	4	0
Sinoe	0	191	0	30	0	1	0	191	0	0
Lofa	0	758	0	103	0	34	0	726	0	0
Nimba	0	613	0	53	0	25	0	550	0	0
Bong	0	302	0	70	0	28	0	300	0	0
Gbarpolu	0	87	0	13	0	8	0	87	0	0
Grand Cape Mount	0	49	0	3	0	4	0	51	0	0
RiverGee	0	123	0	13	0	30	0	123	0	0
Maryland	0	208	0	28	0	19	0	136	0	0
Bomi	0	180	0	17	0	15	0	177	0	0
Rivercess	0	102	0	55	0	0	0	88	0	0
Grand Kru	0	333	0	131	0	17	0	330	0	0
Grand Gedeh	0	163	0	49	0	6	0	125	0	0
National	0	9605	0	1338	0	469	0	9247	18	3

Thank you for Listening