



# **Liberia COVID-19 Daily Sitrep 386**

## **(5<sup>th</sup> April 2021)**

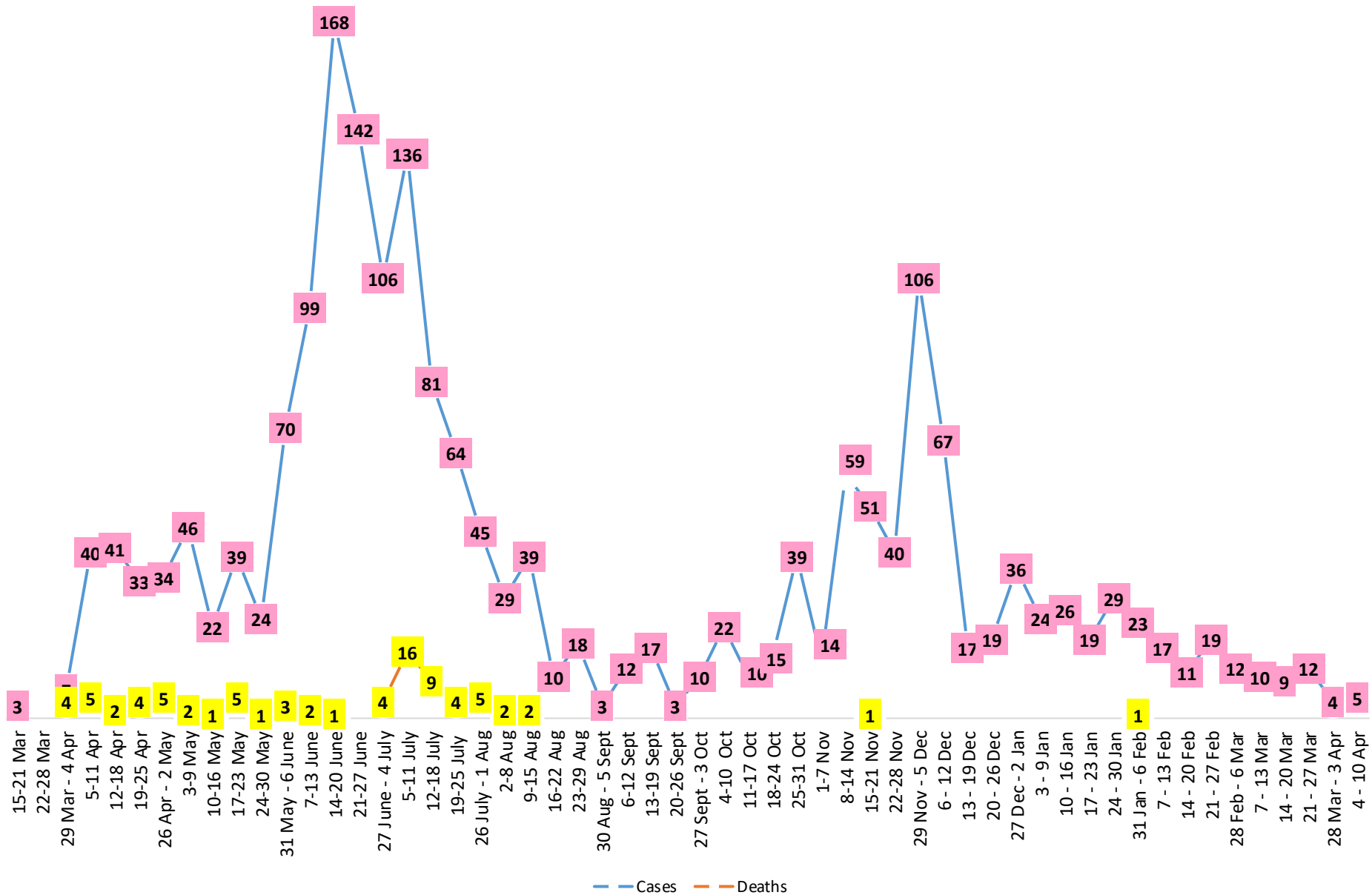
# Summary of COVID-19 Cases by Reporting County, Liberia, 16 March 2020 – 5 April 2021

<b>Bomi</b>	0	0	23
<b>Bong</b>	0	0	54
<b>Gbarpolu</b>	0	0	10
<b>Grand Bassa</b>	0	0	59
<b>Grand Cape Mount</b>	0	0	18
<b>Grand Kru</b>	0	0	18
<b>Grand Gedeh</b>	0	0	16
<b>Lofa</b>	0	0	45
<b>Margibi</b>	0	0	101
<b>Maryland</b>	0	0	34
<b>Montserrado</b>	<b>3</b>	<b>0</b>	<b>1569</b>
<b>Nimba</b>	0	0	72
<b>Rivercess</b>	0	0	5
<b>River Gee</b>	0	0	36
<b>Sinoe</b>	0	0	6
<b>NATIONAL</b>	<b>3</b>	<b>0</b>	<b>2066</b>

# Demographic Breakdown (Gender & Age) of Confirmed COVID-19 Cases (16 March 2020 – 5 April 2021)

County	<15 years		15 - 34		35 - 54		55+		All ages		Total Confirmed
	M	F	M	F	M	F	M	F	M	F	
Bomi	2	2	3	5	7	3	0	1	12	11	23
Bong	3	1	4	6	20	9	8	3	35	19	54
Gbarpolu	1	2	0	2	3	1	1	0	5	5	10
Grand Bassa	11	2	9	11	13	8	3	2	36	23	59
Grand Cape Mount	0	0	10	0	7	0	1	0	18	0	18
Grand Kru	0	0	2	5	4	5	2	0	8	10	18
Grand Gedeh	0	1	1	2	7	3	2	0	10	6	16
Lofa	3	3	8	3	13	5	8	2	32	13	45
Margibi	6	4	15	13	28	12	15	8	64	37	101
Maryland	2	0	10	6	9	4	1	2	22	12	34
<b>Montserrado</b>	53	49	369	215	446	194	169	74	1037	532	1569
Nimba	1	4	15	10	28	6	5	3	49	23	72
Rivercess	0	0	2	3	0	0	0	0	2	3	5
River Gee	0	0	4	3	19	5	5	0	28	8	36
Sinoe	0	0	1	0	4	1	0	0	5	1	6
<b>National</b>	<b>82</b>	<b>68</b>	<b>453</b>	<b>284</b>	<b>608</b>	<b>256</b>	<b>220</b>	<b>95</b>	<b>1363</b>	<b>703</b>	<b>2066</b>

# COVID-19 WEEKLY EPI-CURVE



# Summary of COVID-19 Deaths by Reporting County, Liberia, 16 March 2020 – 5 April 2021

County	Unconfirmed Suspected Deaths	COVID-19 Treatment Unit	Total in COVID-19 Treatment Unit	Health Facility	Total in Health Facility	Community	Total in Community	Confirmed Deaths on Contact List	Cumulative Deaths
Bomi	0	0	0	0	1	0	0	0	1
Bong	0	0	0	0	4	0	1	0	5
Gbarpolu	0	0	0	0	2	0	0	0	2
Grand Bassa	0	0	0	0	0	0	0	0	0
Grand Cape Mount	0	0	0	0	0	0	0	0	0
Grand Gedeh	0	0	0	0	0	0	0	0	0
Grand Kru	0	0	0	0	0	0	0	0	0
Lofa	0	0	0	0	6	0	5	0	11
Maryland	0	0	0	0	2	0	0	0	2
Margibi	0	0	2	0	4	0	0	0	6
Montserrado	0	0	9	0	19	0	16	0	43
Nimba	0	0	2	0	5	0	4	0	11
Rivercess	0	0	0	0	1	0	1	0	2
River Gee	0	0	0	0	0	0	0	0	0
Sinoe	0	0	0	0	1	0	0	0	1
<b>National</b>	<b>0</b>	<b>0</b>	<b>13</b>	<b>0</b>	<b>45</b>	<b>0</b>	<b>27</b>	<b>0</b>	<b>85</b>

The Liberia Case Fatality rate (CFR) officially considered is for deaths that occurred among patients in care at the COVID-19 treatment units across the country. As of 30 December 2020 , a total of 13 deaths have been recorded CFR=1.3%. The country is however keeping active surveillance on community deaths and deaths in non COVID-19 treatment health units.

# Daily and Cumulative Healthcare Worker (HCW) COVID-19 Cases and Deaths by County, Liberia, 16 March 2020 – 5 April 2021

County	DAILY REPORT						CUMULATIVE CASES (ALIVE & DEAD)	
	New Suspected & High Risk Cases (Alive)			New Suspect Death	Laboratory Confirmed Cases	Confirmed Cases on Contact List	Confirmed	Deaths
	Suspect	High Risk	Total					
Bomi	0	0	0	0	0	0	5	0
Bong	0	0	0	0	0	0	19	3
Gbarpolu	0	0	0	0	0	0	1	0
Grand Bassa	0	0	0	0	0	0	21	0
Grand Gedeh	0	0	0	0	0	0	2	0
Grand Kru	0	0	0	0	0	0	14	0
Lofa	0	0	0	0	0	0	16	0
Margibi	0	0	0	0	0	0	12	1
Maryland	0	0	0	0	0	0	16	0
Montserrado	0	0	0	0	0	0	88	1
Nimba	0	0	0	0	0	0	14	0
Rivercess	0	0	0	0	0	0	3	0
River Gee	0	0	0	0	0	0	10	0
Sinoe	0	0	0	0	0	0	3	0
NATIONAL	0	0	0	0	0	0	224	5

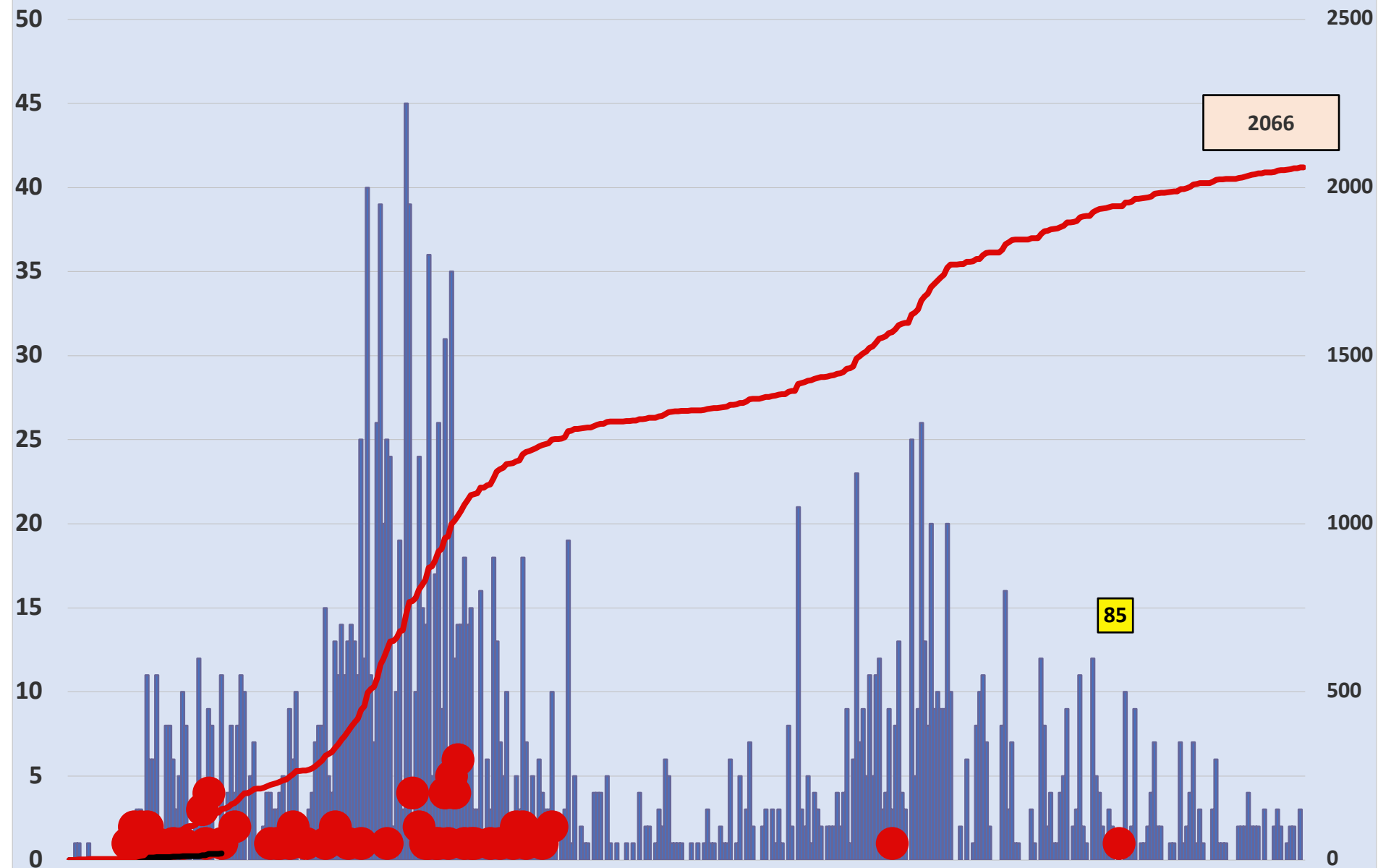
# Cadre Cases and Deaths by Health Care Workers (16 March 2020 – 5 April 2021)

National (Total)	Deaths	Cases	Grand Gedeh	Deaths	Cases	Rivercess	Deaths	Cases	Bomi	Deaths	Cases	Maryland	Deaths	Cases	Grand Bassa	Deaths	Cases	Lofa	Deaths	Cases	Bong	Deaths	Cases	Gbarpolu	Deaths	Cases	Grand Kru	Deaths	Cases	Sinoe	Deaths	Cases	River Gee	Deaths	Cases	Nimba	Deaths	Cases	Margibi	Deaths	Cases	Montserrat	Deaths	Cases	Health Care Worker Cadre																																																																																																																																																																																																																																																																																																																																																																																																																																																																																																																																																																																																																																																																																																																																																																																																																																																																																																																																																																																																																																																																																																																																																																																																																																																																

**\*Others include the following:**

**Radiologist, Microbiologist, Epidemiologist, Dispenser, Licensed Practical Nurse, Psychosocial worker, Hygienist, Logistician, Vaccinator, Ambulance Driver, Procurement Officer, Registrar, Accountant, Secretary, Hospital Administrator, Community Health Volunteer, GIS Specialist, EOC Coordinator**

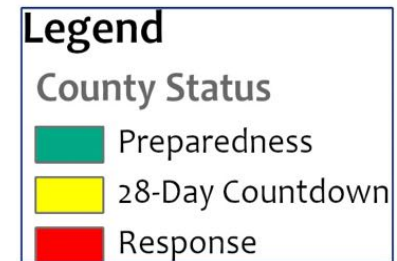
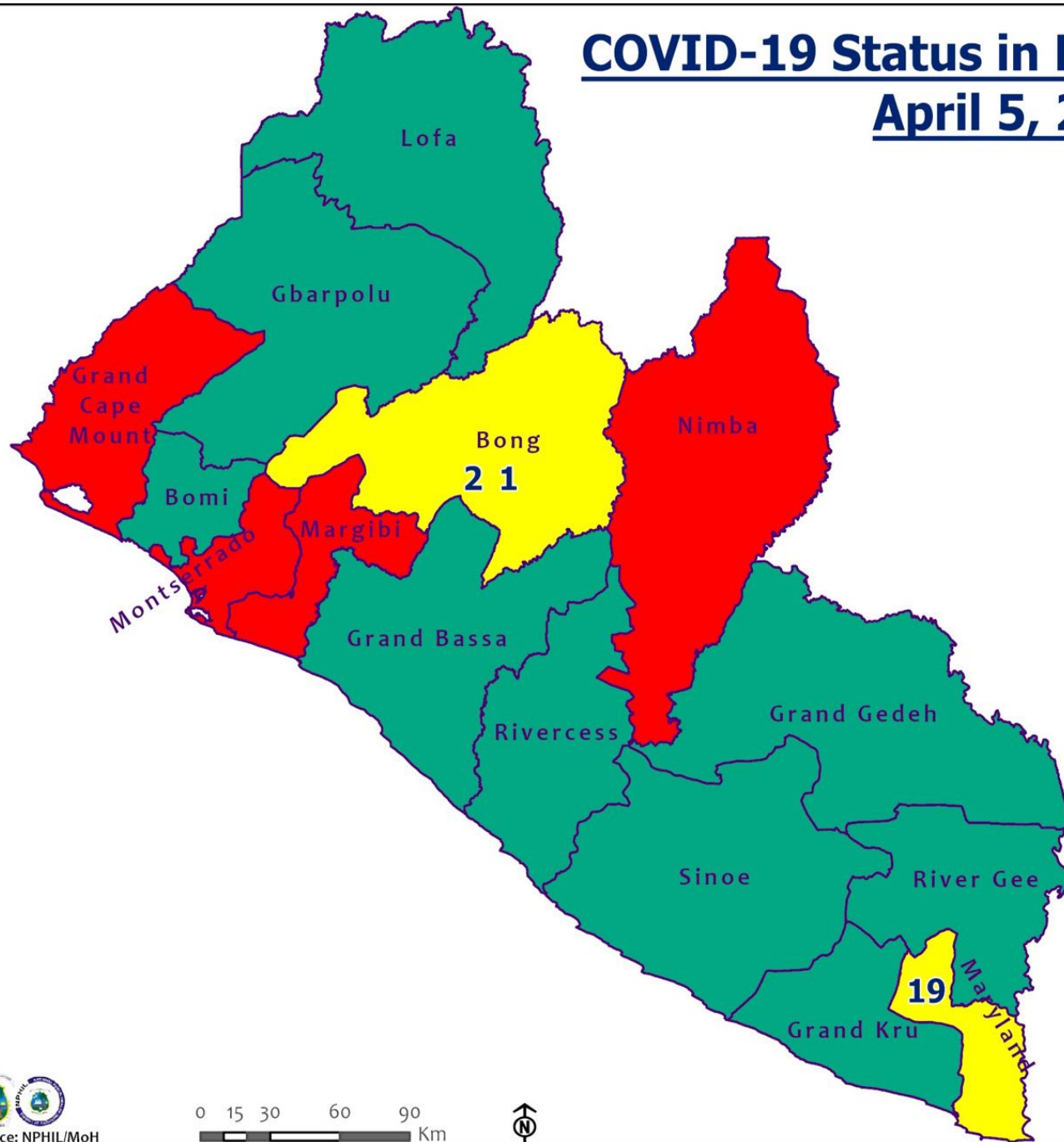
# EPI-Curve of Confirmed Cases and Deaths





# COVID-19 Status in Liberia by County

## April 5, 2021



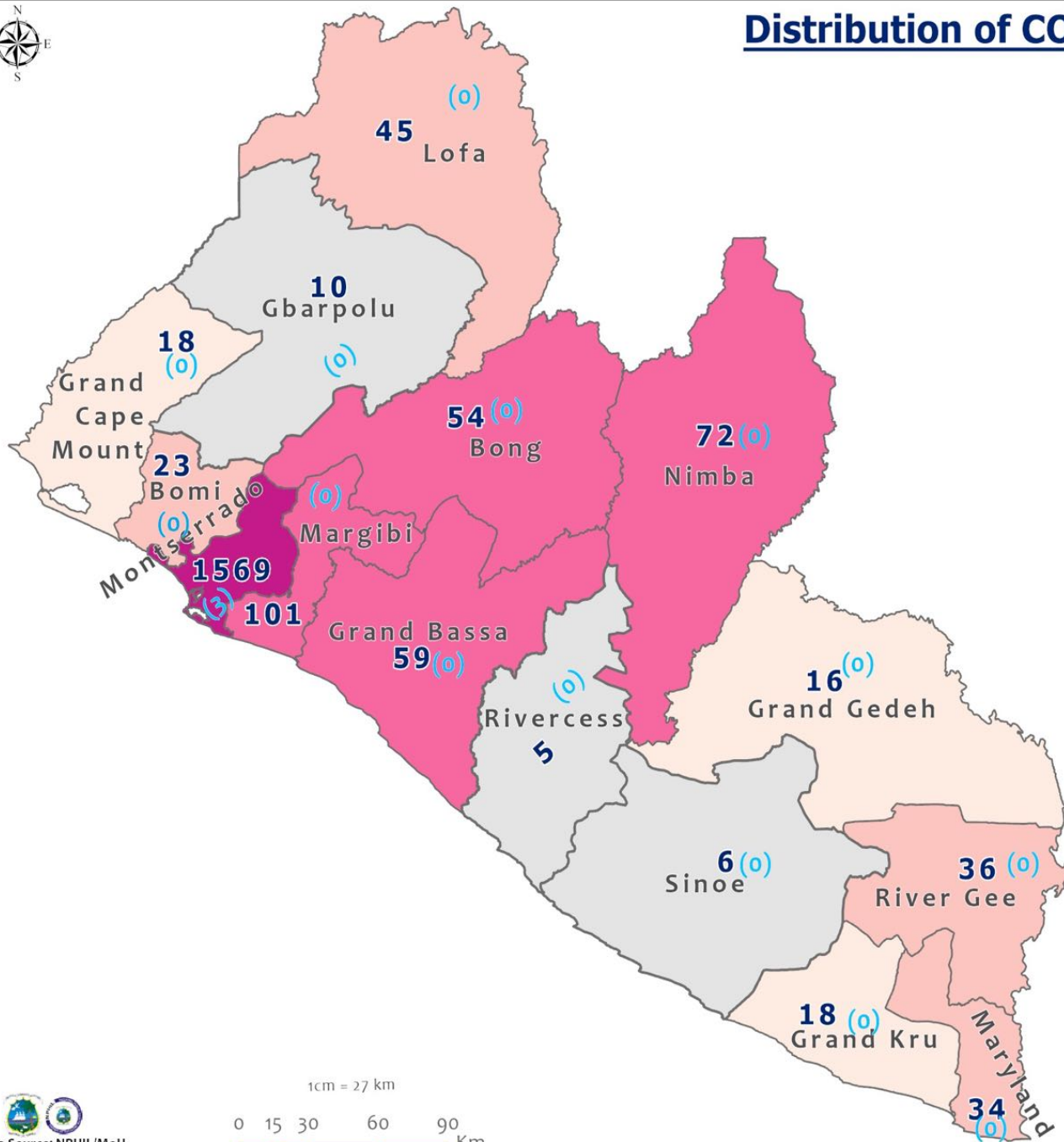
Data Source: NPHIL/MoH

0 15 30 60 90 Km





## Distribution of COVID-19 Cases by County in Liberia - April 5, 2021



Total cumulative cases:

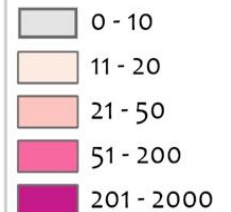
**2066**

Total new cases:

**3**

### Legend

Number of Cases



Cumulative cases

New cases

**0** (0)

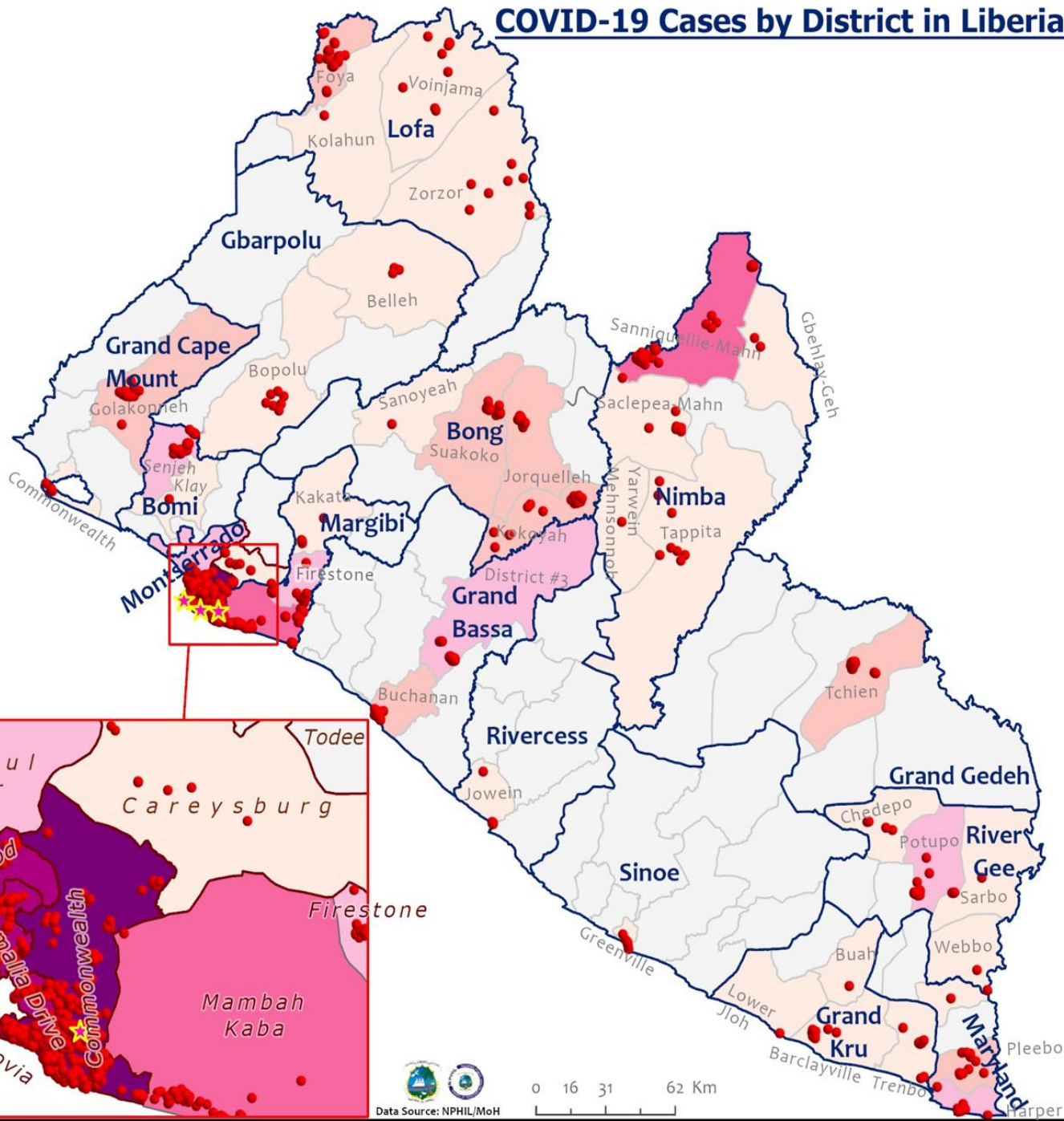


Data Source: NPHIL/MoH





## COVID-19 Cases by District in Liberia - April 5, 2021



**Total Cases: 2066**

Affected Counties	Cumulative Cases
Montserrado	1569
Margibi	101
Nimba	72
Grand Bassa	59
Bong	54
Lofa	45
River Gee	36
Maryland	34
Bomi	23
Grand Kru	18
Grand Cape Mount	18
Grand Gedeh	16
Gbarpolu	10
Sinoe	6
Rivercess	5

### Legend

#### Case Status

- ★ New confirmed case
- Confirmed cases

#### Cases / District

- 0
- 1-10
- 11-20
- 21-50
- 51-100
- 101-200
- 201-600





Affected Counties	Cumulative Cases
Montserrado	1569
Margibi	101
Nimba	72
Grand Bassa	59
Bong	54
Lofa	45
River Gee	36
Maryland	34
Boni	23
Grand Kru	18
Grand Cape Mount	18
Grand Gedeh	16
Gbarpolu	10
Sinoe	6
Rivercess	5

### Legend

### Case Status

- Active
- Recovered
- Dead

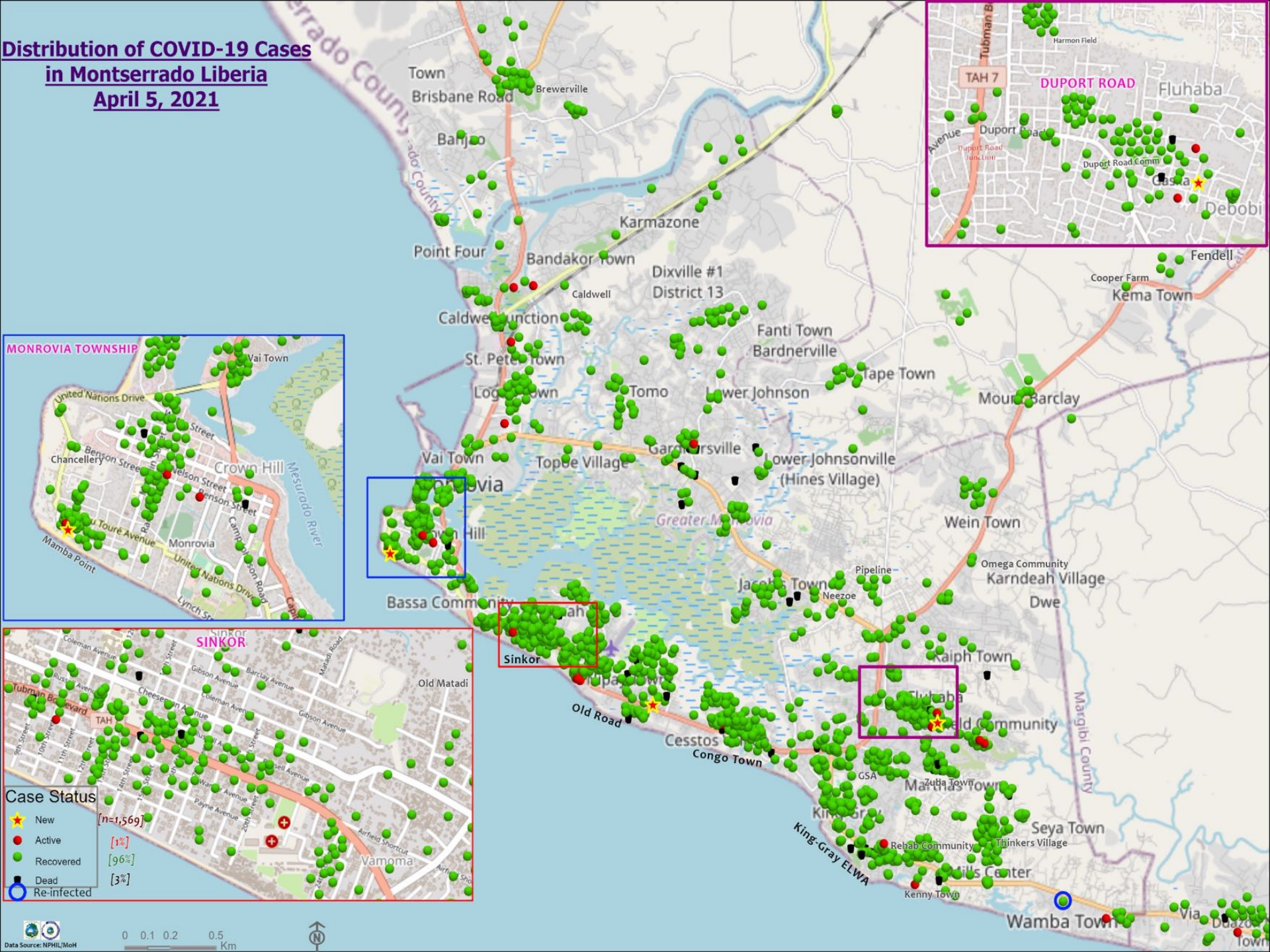
[1%]  
[95%]  
[4%]

## Cases / District





## Distribution of COVID-19 Cases in Montserrado Liberia April 5, 2021



# Summary of confirmed, recovered, active, and dead cases by reporting counties, Liberia, 16 March 2020 – 5 April 2021

County	Confirmed Cases		Recovered Cases		Active Cases	Dead Cases	
	New	Cum	New	Cum		New	Cum
Bomi	0	23	0	22	0	0	1
Bong	0	54	0	49	0	0	5
Gbarpolu	0	10	0	8	0	0	2
Grand Bassa	0	59	0	59	0	0	0
Grand Cape Mount	0	18	0	16	2	0	0
Grand Gedeh	0	16	0	16	0	0	0
Grand Kru	0	18	0	18	0	0	0
Lofa	0	45	0	34	0	0	11
Margibi	0	101	0	93	2	0	6
Maryland	0	34	0	32	0	0	2
Montserrado	3	1569	0	1471	54	0	44
Nimba	0	72	0	60	1	0	11
Rivercess	0	5	0	3	0	0	2
River Gee	0	36	0	36	0	0	0
Sinoe	0	6	0	5	0	0	1
National	3	2066	0	1922	59	0	85

# Daily Summary Report at Treatment Units – 5 April 2021

Treatment Facility Name	New Admissions	Cumulative Admission	Daily Discharges	Cumulative Recoveries	Daily Deaths	Cumulative Deaths	Currently in treatment
Bomi LGH Treatment Unit	0	18	0	18	0	0	0
Bong Treatment Unit	0	26	0	26	0	0	0
Chief Jallahlone Hospital Treatment Unit	0	1	0	1	0	0	0
Grand Bassa Arcelor Mittal Treatment Unit	0	6	0	6	0	0	0
Grand Bassa LGH Treatment Unit	0	3	0	3	0	0	0
LAC Treatment Unit	0	42	0	42	0	0	0
Starbase Treatment Unit	0	644	0	634	0	9	0
Union Treatment Center	0	78	0	78	0	0	0
Duside Hospital Treatment Unit	0	42	0	40	0	2	0
Martha Tubman Hospital Treatment Unit	0	13	0	13	0	0	0
Rally Time Treatment Unit	0	4	0	4	0	0	0
Sasstown Treatment Unit	0	7	0	7	0	0	0
Behwan Treatment Unit	0	7	0	7	0	0	0
FJ Grante Hospital Treatment Unit	0	5	0	5	0	0	0
JJ Dossen Hospital Treatment Unit	0	9	0	9	0	0	0
Pleebo Health Center Treatment Unit	0	21	0	21	0	0	0
Tellewoyan Memorial Hospital Treatment Unit	0	13	0	13	0	0	0
Foya Borma Hospital Treatment Unit	0	12	0	12	0	0	0
Zorzor Treatment Unit	0	6	0	6	0	0	0
Robert Sport Treatment Unit	0	1	0	1	0	0	0
Ganta United Methodist Hospital Treatment Unit	0	1	0	1	0	0	0
Arcelor Mittal Yekepa Treatment Unit	0	12	0	12	0	0	0
Jackson F. Doe Treatment Unit	0	5	0	4	0	1	0
St. Frances Hospital Treatment Unit	0	2	0	2	0	0	0
Fish Town Hospital Treatment Unit	0	36	0	36	0	0	0
E&J Medical Center Treatment Unit	0	20	0	19	0	1	0
<b>TOTAL</b>	<b>0</b>	<b>1034</b>	<b>0</b>	<b>1020</b>	<b>0</b>	<b>13</b>	<b>0</b>

# Home-Base Care of COVID-19 Cases

County	New Admissions	Currently in Admissions	No. Followed-up (In-person/Phone)	Cumulative Admissions	New Recoveries	Cumulative Recoveries	Referrals to TU	Cumulative Referrals to TU	New Death	Cumulative Deaths
Montserrat	2	9	9	204	2	194	0	5	0	0
Grand Cape Mount				0						
Nimba				0						
Margibi				0						
Maryland				0						
Bong				0						
<b>Total:</b>	0	9	9	204	0	194	0	5	0	0



# Laboratory Samples Evaluated – 5 April 2021

County	Sample Evaluated	New Positive	Repeat Positive	Initial Negative	Repeat Test Negative	Pending Lab Result
Bong	2	0	0	2	0	0
Grand Bassa	4	0	0	4	0	0
Grand Cape Mount	2	0	0	2	0	0
Margibi	30	0	0	29	0	1
Montserrado	340	3	1	330	0	6
Nimba	11	0	0	10	0	1
<b>TOTAL</b>	<b>389</b>	<b>3</b>	<b>1</b>	<b>377</b>	<b>0</b>	<b>8</b>
Outgoing Traveler	108	1	1	98	0	8
Incoming Traveler	281	2	0	279	0	0
Voluntary	0	0	0	0	0	0
NRL	389	3	1	377	0	8
UN Clinic Lab	0	0	0	0	0	0

# Summary of COVID-19 Daily PoE in Response Counties (5 April 2021)

Date of travel	Type of PoE	Point of Entry Name	Type of conveyance	# of Travelers Arrival	# of Travelers departure	# of travelers with elevated temp	Total Travelers screened		Total Passengers tested on Arrival	Total Foreign diplomat Exempted	# of Children under 5 years not tested	Passengers staying less than 5 days exempted	Total passengers in transit	Total passports collected	Total # of Travelers
							Male	Female							
5-Apr	Airport		Air Morac	28	29	0	48	9	28	0	0	0	0	0	57
			Brussels	125	118	0	144	99	121	2	2	0	0	0	243
			AWA	0	0	0	0	0	0	0	0	0	0	0	0
			Air France	27	45	0	42	30	21	0	6	0	0	0	72
			Air Cote D'Ivoire	0	0	0	0	0	0	0	0	0	0	0	0
			DHL	0	0	0	0	0	0	0	0	0	0	0	0
			Kenya	63	72	0	86	49	63	0	0	0	0	0	135
			Askya	93	0	0	62	31	86	2	5	0	0	0	93
			Others (Special flight)	0	0	0	0	0	0	0	0	0	0	0	0
	James Spriggs Payne Airport	Flight	4	6	0	7	3	4	0	0	0	0	0	10	
	Land	Ganta Main	Land	16	29	0	15	30	0	0	0	0	0	0	45
		Yekepa	Land	28	9	0	18	19	0	0	0	0	0	0	37
		Loguatu	Land	15	8	0	11	12	0	0	0	0	0	0	23
		Bo Water Side	Land	42	36	0	29	49	0	0	0	0	0	0	78
Seaport	Buchanan	Vessel	0	0	0	0	0	0	0	0	0	0	0	0	
	Freeport of Monrovia	Vessel	0	0	0	0	0	0	0	0	0	0	0	0	
Total:				441	352	0	462	331	323	4	13	0	0	0	793

# Summary of COVID-19 Contact Tracing in Response Counties

County	New Contacts Line listed	Cumulative Contacts	No. of Health Care Workers as Contacts	Cumulative no. of Health Care Workers as contacts	Contacts became a case	Cumulative contacts that became a case	Contacts Completed 14 Days	Cumulative Contacts Completing 14 Days	Contacts Under Follow-up	Contacts lost to Follow-up
Montserrado	0	5528	0	508	0	189	0	5416	32	3
Margibi	0	480	0	125	0	42	0	470	62	0
Grand Bassa	0	457	0	140	0	51	0	410	0	0
Sinoe	0	191	0	30	0	1	0	191	0	0
Lofa	0	758	0	103	0	34	0	726	0	0
Nimba	0	613	0	53	0	25	0	550	0	0
Bong	0	302	0	70	0	28	0	300	20	0
Gbarpolu	0	87	0	13	0	8	0	87	0	0
Grand Cape Mount	0	49	0	3	0	4	0	51	3	0
RiverGee	0	123	0	13	0	30	0	123	0	0
Maryland	0	208	0	28	0	19	0	136	0	0
Bomi	0	180	0	17	0	15	0	177	0	0
Rivercess	0	102	0	55	0	0	0	88	0	0
Grand Kru	0	333	0	131	0	17	0	330	0	0
Grand Gedeh	0	163	0	49	0	6	0	125	0	0
National	0	9574	0	1338	0	469	0	9180	117	3

**Thank you for Listening**