



Liberia COVID-19 Daily Sitrep 380 (30th March 2021)

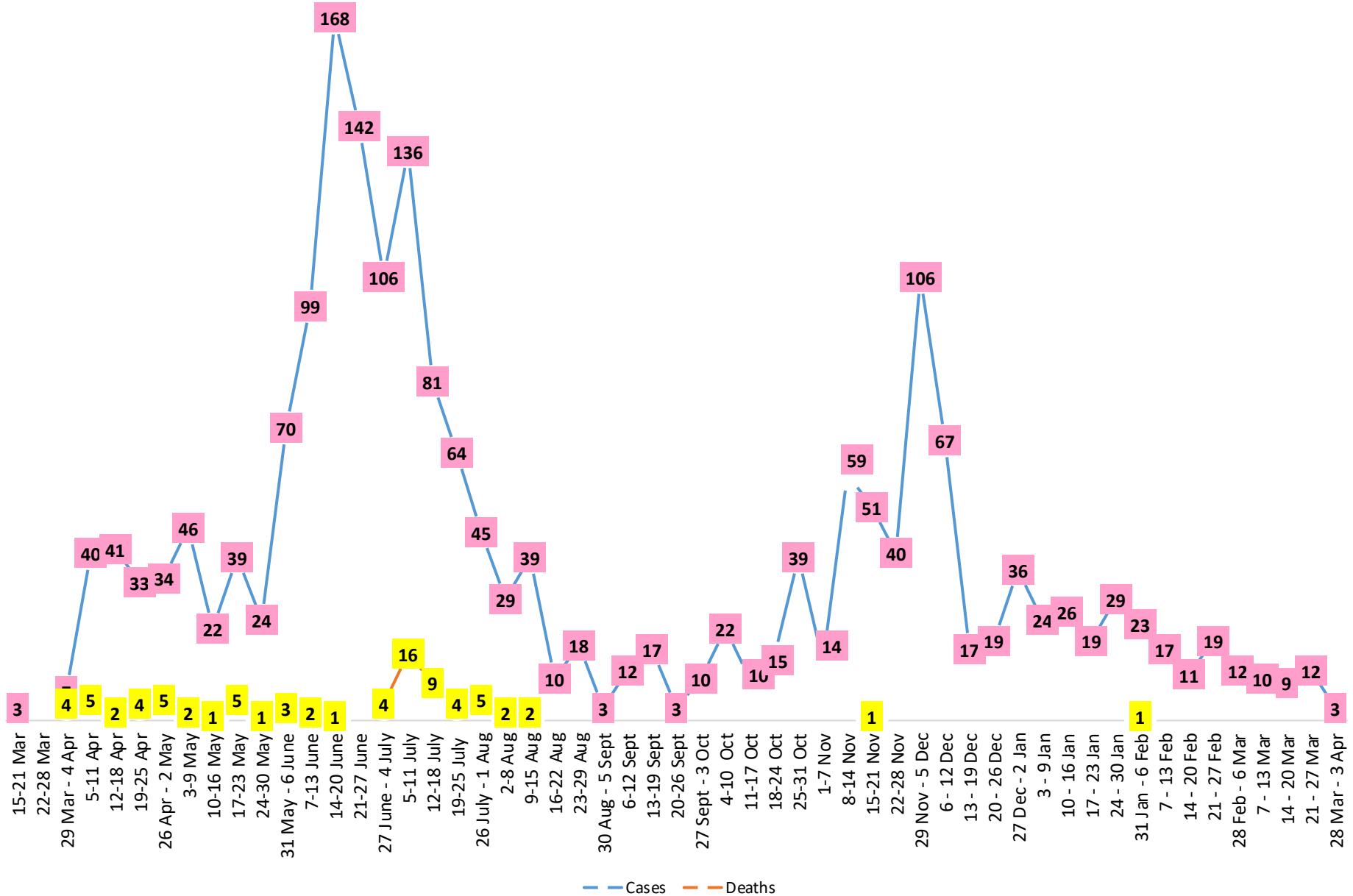
Summary of COVID-19 Cases by Reporting County, Liberia, 16 March 2020 – 30 March 2021

Bomi	0	0	23
Bong	0	0	54
Gbarpolu	0	0	10
Grand Bassa	0	0	59
Grand Cape Mount	0	0	17
Grand Kru	0	0	18
Grand Gedeh	0	0	16
Lofa	0	0	45
Margibi	0	0	101
Maryland	0	0	34
Montserrado	0	0	1564
Nimba	0	0	72
Rivercess	0	0	5
River Gee	0	0	36
Sinoe	0	0	6
NATIONAL	0	0	2060

Demographic Breakdown (Gender & Age) of Confirmed COVID-19 Cases (16 March 2020 – 30 March 2021)

County	<15 years		15 - 34		35 - 54		55+		All ages		Total Confirmed
	M	F	M	F	M	F	M	F	M	F	
Bomi	2	2	3	5	7	3	0	1	12	11	23
Bong	3	1	4	6	20	9	8	3	35	19	54
Gbarpolu	1	2	0	2	3	1	1	0	5	5	10
Grand Bassa	11	2	9	11	13	8	3	2	36	23	59
Grand Cape Mount	0	0	10	0	6	0	1	0	17	0	17
Grand Kru	0	0	2	5	4	5	2	0	8	10	18
Grand Gedeh	0	1	1	2	7	3	2	0	10	6	16
Lofa	3	3	8	3	13	5	8	2	32	13	45
Margibi	6	4	15	13	28	12	15	8	64	37	101
Maryland	2	0	10	6	9	4	1	2	22	12	34
Montserrado	53	49	368	214	446	193	168	73	1035	529	1564
Nimba	1	4	15	10	28	6	5	3	49	23	72
Rivercess	0	0	2	3	0	0	0	0	2	3	5
River Gee	0	0	4	3	19	5	5	0	28	8	36
Sinoe	0	0	1	0	4	1	0	0	5	1	6
National	82	68	452	283	607	255	219	94	1360	700	2060

COVID-19 WEEKLY EPI-CURVE



Summary of COVID-19 Deaths by Reporting County, Liberia, 16 March 2020 – 30 March 2021

County	New Suspected Deaths	COVID-19 Treatment Unit	Total in COVID-19 Treatment Unit	Health Facility	Total in Health Facility	Community	Total in Community	Confirmed Deaths on Contact List	Cumulative Deaths
Bomi	0	0	0	0	1	0	0	0	1
Bong	0	0	0	0	4	0	1	0	5
Gbarpolu	0	0	0	0	2	0	0	0	2
Grand Bassa	0	0	0	0	0	0	0	0	0
Grand Cape Mount	0	0	0	0	0	0	0	0	0
Grand Gedeh	0	0	0	0	0	0	0	0	0
Grand Kru	0	0	0	0	0	0	0	0	0
Lofa	0	0	0	0	6	0	5	0	11
Maryland	0	0	0	0	2	0	0	0	2
Margibi	0	0	2	0	4	0	0	0	6
Montserrado	0	0	9	0	19	0	16	0	43
Nimba	0	0	2	0	5	0	4	0	11
Rivercess	0	0	0	0	1	0	1	0	2
River Gee	0	0	0	0	0	0	0	0	0
Sinoe	0	0	0	0	1	0	0	0	1
National	0	0	13	0	45	0	27	0	85

The Liberia Case Fatality rate (CFR) officially considered is for deaths that occurred among patients in care at the COVID-19 treatment units across the country. As of 30 December 2020 , a total of 13 deaths have been recorded CFR=1.3%. The country is however keeping active surveillance on community deaths and deaths in non COVID-19 treatment health units.

Daily and Cumulative Healthcare Worker (HCW) COVID-19 Cases and Deaths by County, Liberia, 16 March 2020 – 30 March 2021

County	DAILY REPORT						CUMULATIVE CASES (ALIVE & DEAD)	
	New Suspected & High Risk Cases (Alive)			New Suspect Death	Laboratory Confirmed Cases	Confirmed Cases on Contact List	Confirmed	Deaths
	Suspect	High Risk	Total					
Bomi	0	0	0	0	0	0	5	0
Bong	0	0	0	0	0	0	19	3
Gbarpolu	0	0	0	0	0	0	1	0
Grand Bassa	0	0	0	0	0	0	21	0
Grand Gedeh	0	0	0	0	0	0	2	0
Grand Kru	0	0	0	0	0	0	14	0
Lofa	0	0	0	0	0	0	16	0
Margibi	0	0	0	0	0	0	12	1
Maryland	0	0	0	0	0	0	16	0
Montserrado	0	0	0	0	0	0	88	1
Nimba	0	0	0	0	0	0	14	0
Rivercess	0	0	0	0	0	0	3	0
River Gee	0	0	0	0	0	0	10	0
Sinoe	0	0	0	0	0	0	3	0
NATIONAL	0	0	0	0	0	0	224	5

Cadre Cases and Deaths by Health Care Workers (16 March 2020 – 30 March 2021)

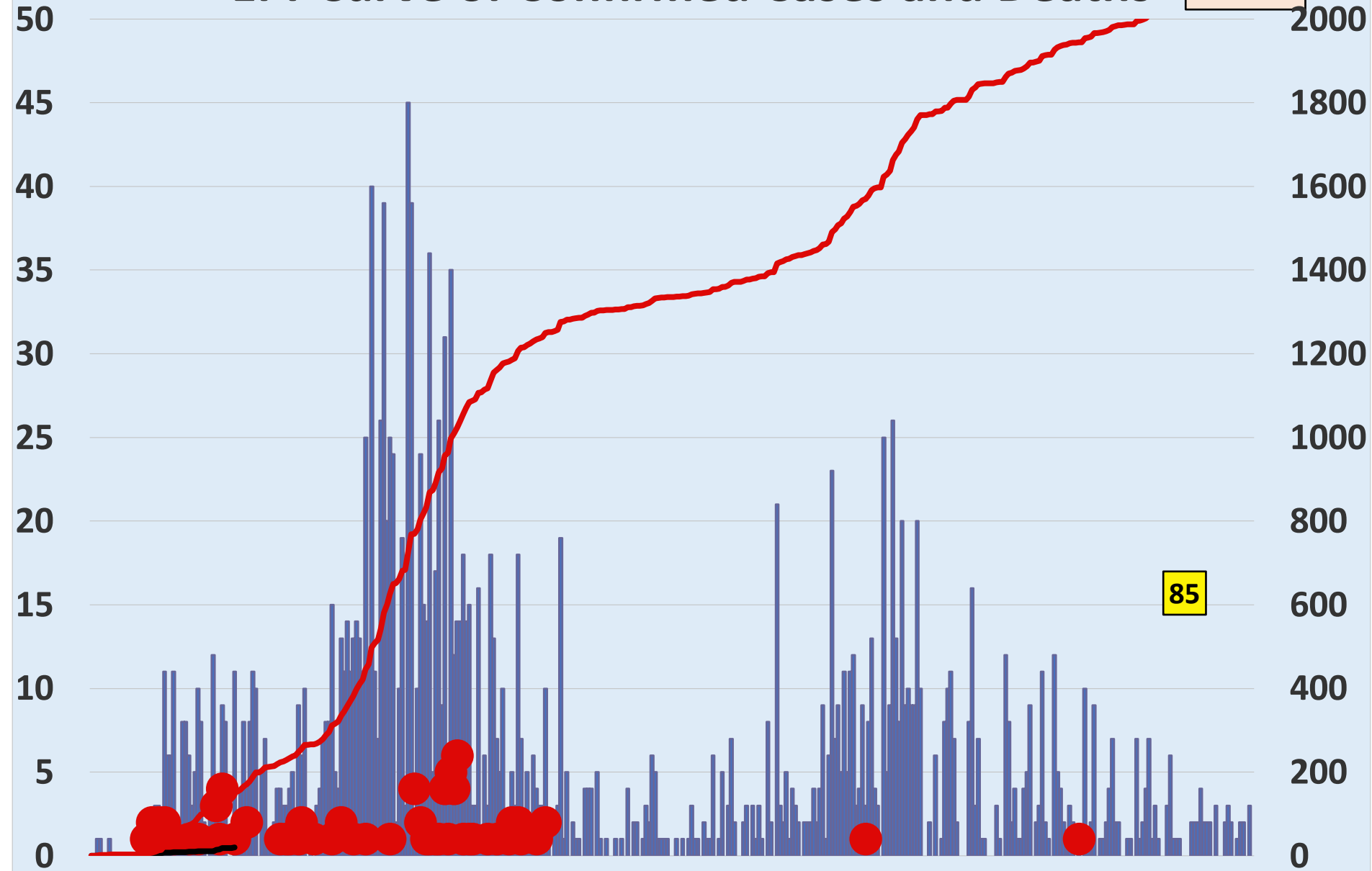
Health Care Worker Cadre	Montserratado		Margibi		Nimba		River Gee		Sinoe		Grand Kru		Gbarpolu		Bong		Lofa		Grand Bassa		Maryland		Bomi		Rivercess		Grand Gedeh		National (Total)	
	Cases	Deaths	Cases	Deaths	Cases	Deaths	Cases	Deaths	Cases	Deaths	Cases	Deaths	Cases	Deaths	Cases	Deaths	Cases	Deaths	Cases	Deaths	Cases	Deaths	Cases	Deaths	Cases	Deaths	Cases	Deaths	Cases	Deaths
Doctors	17	0	1	0	0	0	1	0	0	0	0	0	0	0	1	0	0	0	1	0	0	0	0	0	0	0	0	21	0	
Pharmacists	4	0	0	0	0	0	0	0	0	0	0	0	0	0	0	0	0	0	0	0	0	0	0	0	0	0	0	4	0	
Nurses	23	1	2	0	2	0	5	0	0	0	2	0	1	1	12	1	8	0	5	0	1	0	1	0	0	0	0	62	3	
Nurse Aid	0	0	0	0	2	0	0	0	0	0	4	0	0	0	0	0	0	8	0	2	0	0	0	0	0	0	0	16	0	
Midwife	0	0	0	0	0	0	1	0	0	0	1	0	0	0	1	0	1	0	1	0	0	0	0	0	0	0	0	5	0	
Physician Assistants	8	0	1	0	1	0	1	0	0	0	1	0	0	0	0	0	1	0	1	0	0	0	0	0	0	0	0	14	0	
Lab Technician	9	0	1	0	2	0	0	0	1	0	1	0	0	0	0	2	0	0	0	10	0	0	0	3	0	0	0	29	0	
Environmental Health Technicians	5	0	0	0	0	0	0	0	0	0	0	0	0	0	0	0	0	0	0	0	0	0	0	0	0	0	0	5	0	
Dieticians	0	0	7	1	0	0	0	0	0	0	0	0	0	0	0	0	0	0	0	0	0	0	0	0	0	0	0	7	1	
Hospital Cleaner	1	0	0	0	0	0	0	0	0	0	1	0	0	0	1	0	0	0	1	0	2	0	0	0	0	0	0	6	0	
Others*	21	0	0	0	7	0	2	0	2	0	4	0	0	0	4	1	4	0	4	0	1	0	4	0	0	2	0	55	1	
Total:	88	1	12	1	14	0	10	0	3	0	14	0	1	1	19	2	16	0	21	0	16	0	5	0	3	0	2	0	224	5

***Others include the following:**

Radiologist, Microbiologist, Epidemiologist, Dispenser, Licensed Practical Nurse, Psychosocial worker, Hygienist, Logistician, Vaccinator, Ambulance Driver, Procurement Officer, Registrar, Accountant, Secretary, Hospital Administrator, Community Health Volunteer, GIS Specialist, EOC Coordinator

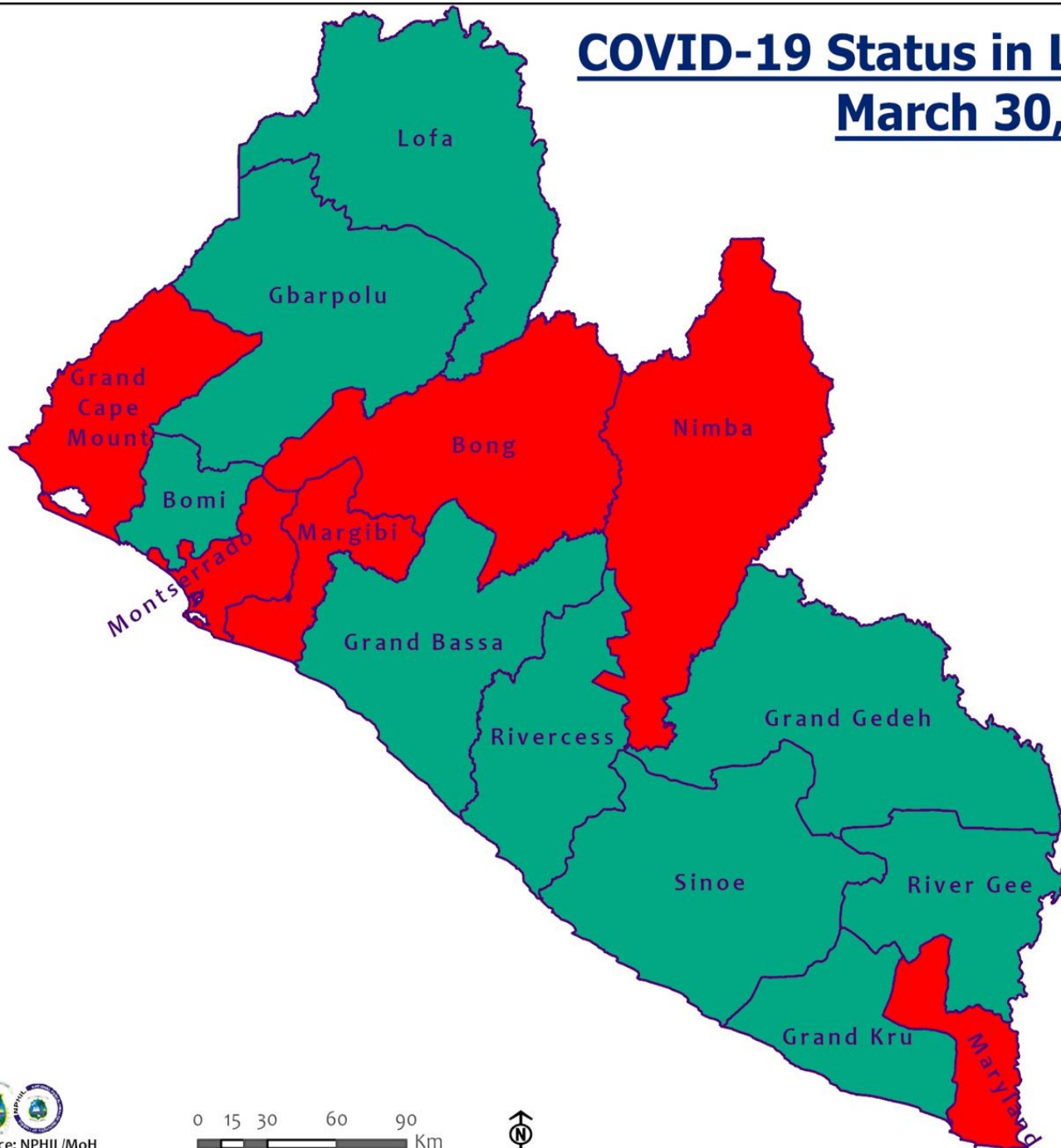
EPI-Curve of Confirmed Cases and Deaths

2060



■ Daily Cases
● Daily Deaths

COVID-19 Status in Liberia by County March 30, 2021



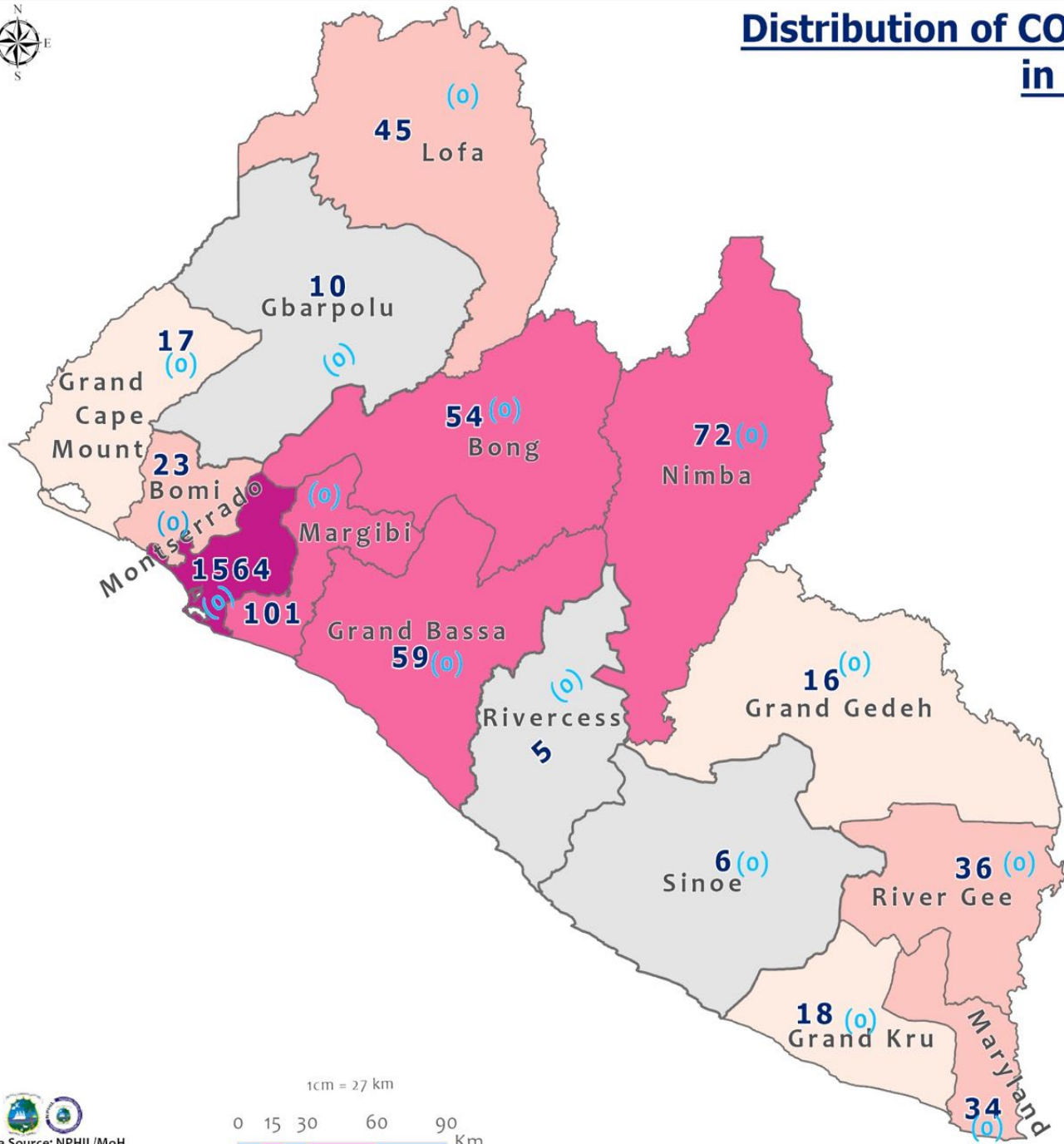
Legend

County Status

- Preparedness
- 28-Day Countdown
- Response



Distribution of COVID-19 Cases by County in Liberia - March 30, 2021



Total cumulative cases:

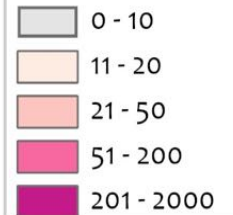
2060

Total new cases:

0

Legend

Number of Cases



Cumulative cases

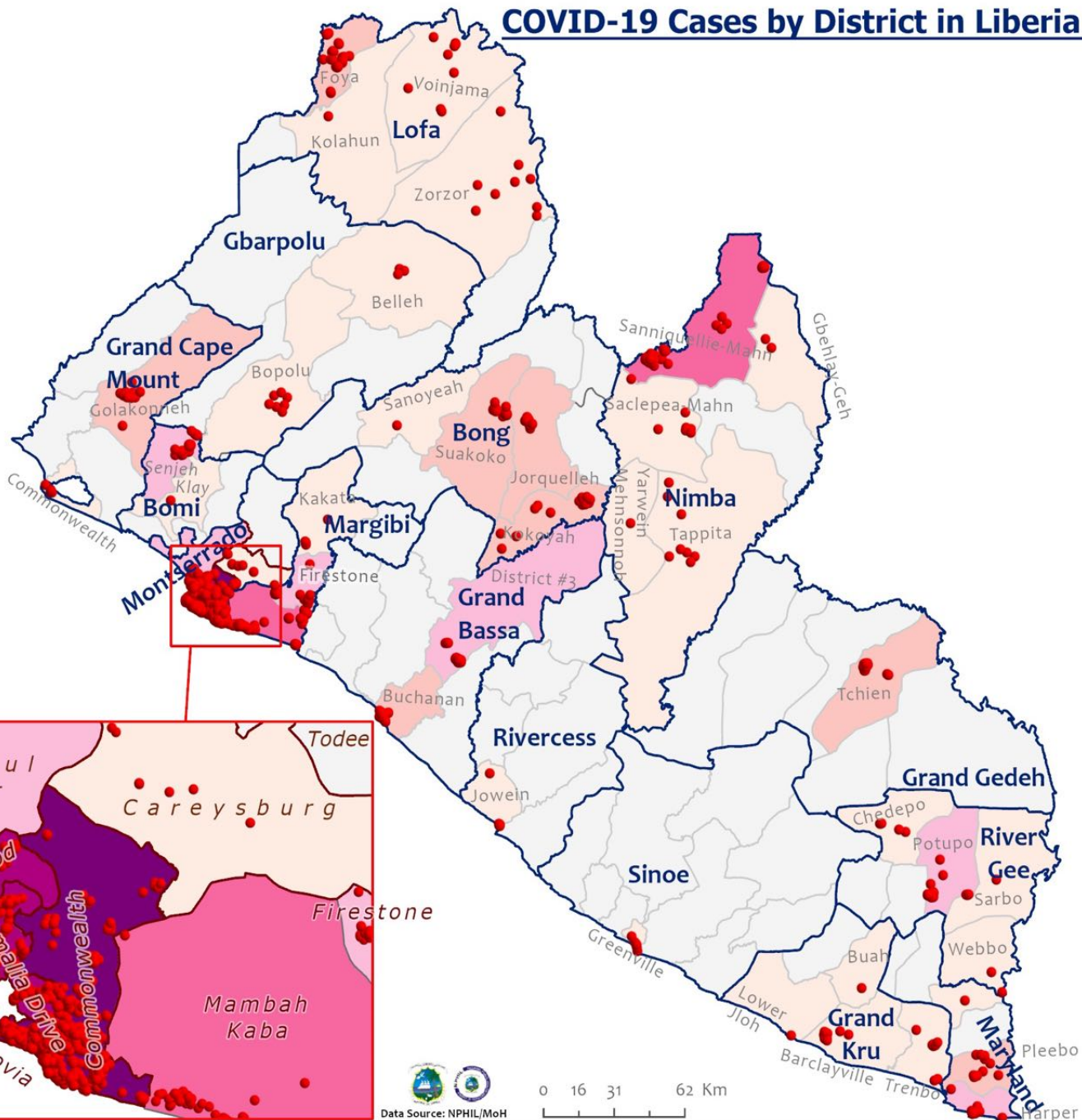
New cases

0 (0)

1cm = 27 km

0 15 30 60 90 Km

COVID-19 Cases by District in Liberia - March 30, 2021



Total Cases: 2060

Affected Counties	Cumulative Cases
Montserrado	1564
Margibi	101
Nimba	72
Grand Bassa	59
Bong	54
Lofa	45
River Gee	36
Maryland	34
Bomi	23
Grand Kru	18
Grand Cape	17
Mount	16
Grand Gedeh	16
Gbarpolu	10
Sinoe	6
Rivercess	5

Legend

Case Status

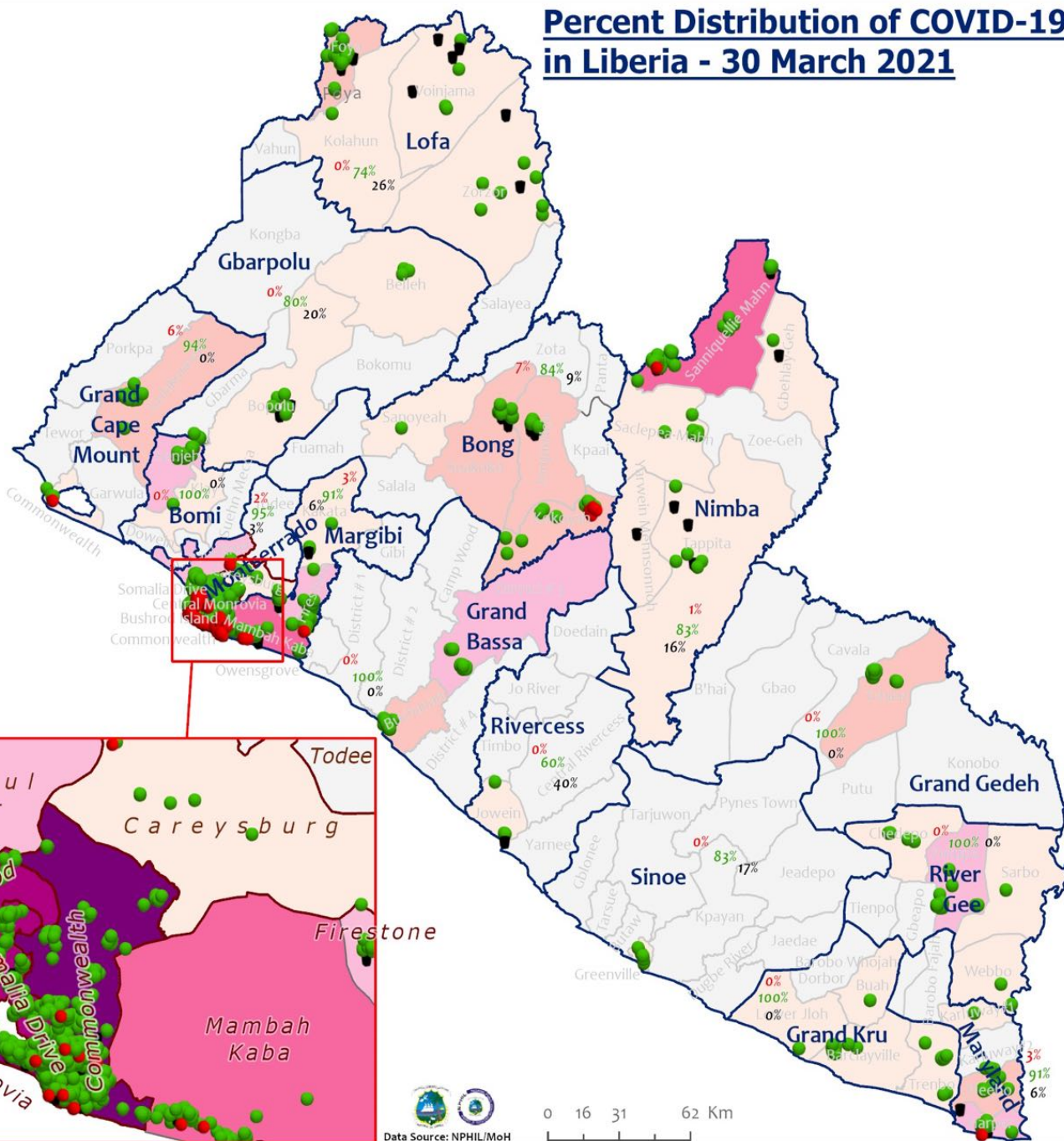
- ★ New confirmed case
- Confirmed cases

Cases / District

- 0
- 1-10
- 11-20
- 21-50
- 51-100
- 101-200
- 201-600



Percent Distribution of COVID-19 Cases by Status in Liberia - 30 March 2021



Total Cases: 2060

Affected Counties	Cumulative Cases
Montserrado	1564
Margibi	101
Nimba	72
Grand Bassa	59
Bong	54
Lofa	45
River Gee	36
Maryland	34
Bomi	23
Grand Kru	18
Grand Cape Mount	17
Grand Gedeh	16
Gbarpolu	10
Sinoe	6
Rivercess	5

Legend

Case Status

- Active [2%]
- Recovered [94%]
- Dead [4%]

Cases / District

- 0
- 1-10
- 11-20
- 21-50
- 51-100
- 101-200
- 201-600



0 16 31 62 Km

Data Source: NPHIL/MoH

Summary of confirmed, recovered, active, and dead cases by reporting counties, Liberia, 16 March 2020 – 30 March 2021

County	Confirmed Cases		Recovered Cases		Active Cases	Dead Cases	
	New	Cum	New	Cum		New	Cum
Bomi	0	23	0	22	0	0	1
Bong	0	54	0	45	3	0	5
Gbarpolu	0	10	0	8	0	0	2
Grand Bassa	0	59	0	59	0	0	0
Grand Cape Mount	0	17	0	16	1	0	0
Grand Gedeh	0	16	0	16	0	0	0
Grand Kru	0	18	0	18	0	0	0
Lofa	0	45	0	34	0	0	11
Margibi	0	101	0	93	2	0	6
Maryland	0	34	0	31	1	0	2
Montserrado	0	1564	0	1470	49	0	44
Nimba	0	72	0	60	1	0	11
Rivercess	0	5	0	3	0	0	2
River Gee	0	36	0	36	0	0	0
Sinoe	0	6	0	5	0	0	1
National	0	2060	0	1916	57	0	85

Daily Summary Report at Treatment Units – 30 March 2021

Treatment Facility Name	New Admissions	Cumulative Admission	Daily Discharges	Cumulative Recoveries	Daily Deaths	Cumulative Deaths	Currently in treatment
Bomi LGH Treatment Unit	0	18	0	18	0	0	0
Bong Treatment Unit	0	26	0	26	0	0	0
Chief Jallahlone Hospital Treatment Unit	0	1	0	1	0	0	0
Grand Bassa Arcelor Mittal Treatment Unit	0	6	0	6	0	0	0
Grand Bassa LGH Treatment Unit	0	3	0	3	0	0	0
LAC Treatment Unit	0	42	0	42	0	0	0
Starbase Treatment Unit	0	644	0	634	0	9	1
Union Treatment Center	0	78	0	78	0	0	0
Duside Hospital Treatment Unit	0	42	0	40	0	2	0
Martha Tubman Hospital Treatment Unit	0	13	0	13	0	0	0
Rally Time Treatment Unit	0	4	0	4	0	0	0
Sasstown Treatment Unit	0	7	0	7	0	0	0
Behwan Treatment Unit	0	7	0	7	0	0	0
FJ Grante Hospital Treatment Unit	0	5	0	5	0	0	0
JJ Dossen Hospital Treatment Unit	0	9	0	9	0	0	0
Pleebo Health Center Treatment Unit	0	21	0	21	0	0	0
Tellewoyan Memorial Hospital Treatment Unit	0	13	0	13	0	0	0
Foya Borma Hospital Treatment Unit	0	12	0	12	0	0	0
Zorzor Treatment Unit	0	6	0	6	0	0	0
Robert Sport Treatment Unit	0	1	0	1	0	0	0
Ganta United Methodist Hospital Treatment Unit	0	1	0	1	0	0	0
Arcelor Mittal Yekepa Treatment Unit	0	12	0	12	0	0	0
Jackson F. Doe Treatment Unit	0	5	0	4	0	1	0
St. Frances Hospital Treatment Unit	0	2	0	2	0	0	0
Fish Town Hospital Treatment Unit	0	36	0	36	0	0	0
E&J Medical Center Treatment Unit	0	20	0	19	0	1	0
TOTAL	0	1034	0	1020	0	13	1

Home-Base Care of COVID-19 Cases

County	New Admissions	Currently in Admissions	No. Followed-up (In-person/Phone)	Cumulative Admissions	New Recoveries	Cumulative Recoveries	Referrals to TU	Cumulative Referrals to TU	New Death	Cumulative Deaths
Montserrat	2	9	9	204	2	194	0	5	0	0
Grand Cape Mount				0						
Nimba				0						
Margibi				0						
Maryland				0						
Bong				0						
Total:	2	9	9	204	0	194	0	5	0	0

Laboratory Samples Evaluated – 30 March 2021

County	Sample Evaluated	New Positive	Repeat Positive	Initial Negative	Repeat Test Negative	Pending Lab Result
Bong	1	0	0	1	0	0
Grand Bassa	2	0	0	2	0	0
Grand Cape Mount	8	0	0	8	0	0
Margibi	23	0	0	23	0	0
Montserrado	421	0	0	413	0	8
Maryland	1	0	0	1	0	0
Nimba	3	0	0	3	0	0
TOTAL	459	0	0	451	0	8
Outgoing Traveler	358	0	0	350	0	8
Incoming Traveler	100	0	0	100	0	0
Voluntary	1	0	0	1	0	0
NRL	456	0	0	448	0	8
UN Clinic Lab	3	0	0	3	0	0

Summary of COVID-19 Daily PoE in Response Counties – 30 March 2021

Date of travel	Type of PoE	Point of Entry Name	Type of conveyance	# of Travelers Arrival	# of Travelers departure	# of travelers with elevated temp	Total Travelers screened		Total Passengers tested on Arrival	Total Foreign diplomat Exempted	# of Children under 5 years not tested	Passengers staying less than 5 days exempted	Total passangers in transit	Total passports collected	Total # of Travelers	
							Male	Female								
30-Mar	Airport		Air Morac	0	0	0	0	0	0	0	0	0	0	0	0	
			Brussels	60	0	0	32	28	55	2	3	0	0	0	0	60
			AWA	9	11	0	9	11	7	2	0	0	0	0	0	20
			Air France	25	34	0	36	23	24	1	0	0	0	0	0	59
			Air Cote D'Ivoire	29	22	0	33	18	25	0	2	0	0	2	0	51
			DHL	0	0	0	0	0	0	0	0	0	0	0	0	0
			Kenya	0	0	0	0	0	0	0	0	0	0	0	0	0
			Asky	0	0	0	0	0	0	0	0	0	0	0	0	0
			Others (Special flight)	0	0	0	0	0	0	0	0	0	0	0	0	0
	James Spriggs Payne Airport	Flight	0	0	0	0	0	0	0	0	0	0	0	0	0	
	Land	Ganta Main	Land	0	0	0	0	0	0	0	0	0	0	0	0	
		Yekepa	Land	0	0	0	0	0	0	0	0	0	0	0	0	
		Loguatu	Land	0	0	0	0	0	0	0	0	0	0	0	0	
		Bo Water Side	Land	110	102	0	84	128	0	0	0	0	0	0	212	
Seaport	Buchanan	Vessel	0	0	0	0	0	0	0	0	0	0	0	0		
	Freeport of Monrovia	Vessel	0	0	0	0	0	0	0	0	0	0	0	0		
Total:				233	169	0	194	208	111	5	5	0	2	0	402	

Summary of COVID-19 Contact Tracing in Response Counties

County	New Contacts Line listed	Cumulative Contacts	No. of Health Care Workers as Contacts	Cumulative no. of Health Care Workers as contacts	Contacts became a case	Cumulative contacts that became a case	Contacts Completed 14 Days	Cumulative Contacts Completing 14 Days	Contacts Under Follow-up	Contacts lost to Follow-up
Montserrado	0	5516	0	508	0	189	0	5416	21	3
Margibi	0	480	0	125	0	42	0	470	12	0
Grand Bassa	0	457	0	140	0	51	0	410	0	0
Sinoe	0	191	0	30	0	1	0	191	0	0
Lofa	0	758	0	103	0	34	0	726	0	0
Nimba	0	613	0	53	0	25	0	550	0	0
Bong	0	302	0	70	0	28	0	300	20	0
Gbarpolu	0	87	0	13	0	8	0	87	0	0
Grand Cape Mount	0	49	0	3	0	4	0	51	0	0
RiverGee	0	123	0	13	0	30	0	123	0	0
Maryland	0	208	0	28	0	19	0	136	0	0
Bomi	0	180	0	17	0	15	0	177	0	0
Rivercess	0	102	0	55	0	0	0	88	0	0
Grand Kru	0	333	0	131	0	17	0	330	0	0
Grand Gedeh	0	163	0	49	0	6	0	125	0	0
National	0	9562	0	1338	0	469	0	9180	53	3

Thank you for Listening