



# **Liberia COVID-19 Daily Sitrep 368 (18<sup>th</sup> March 2021)**

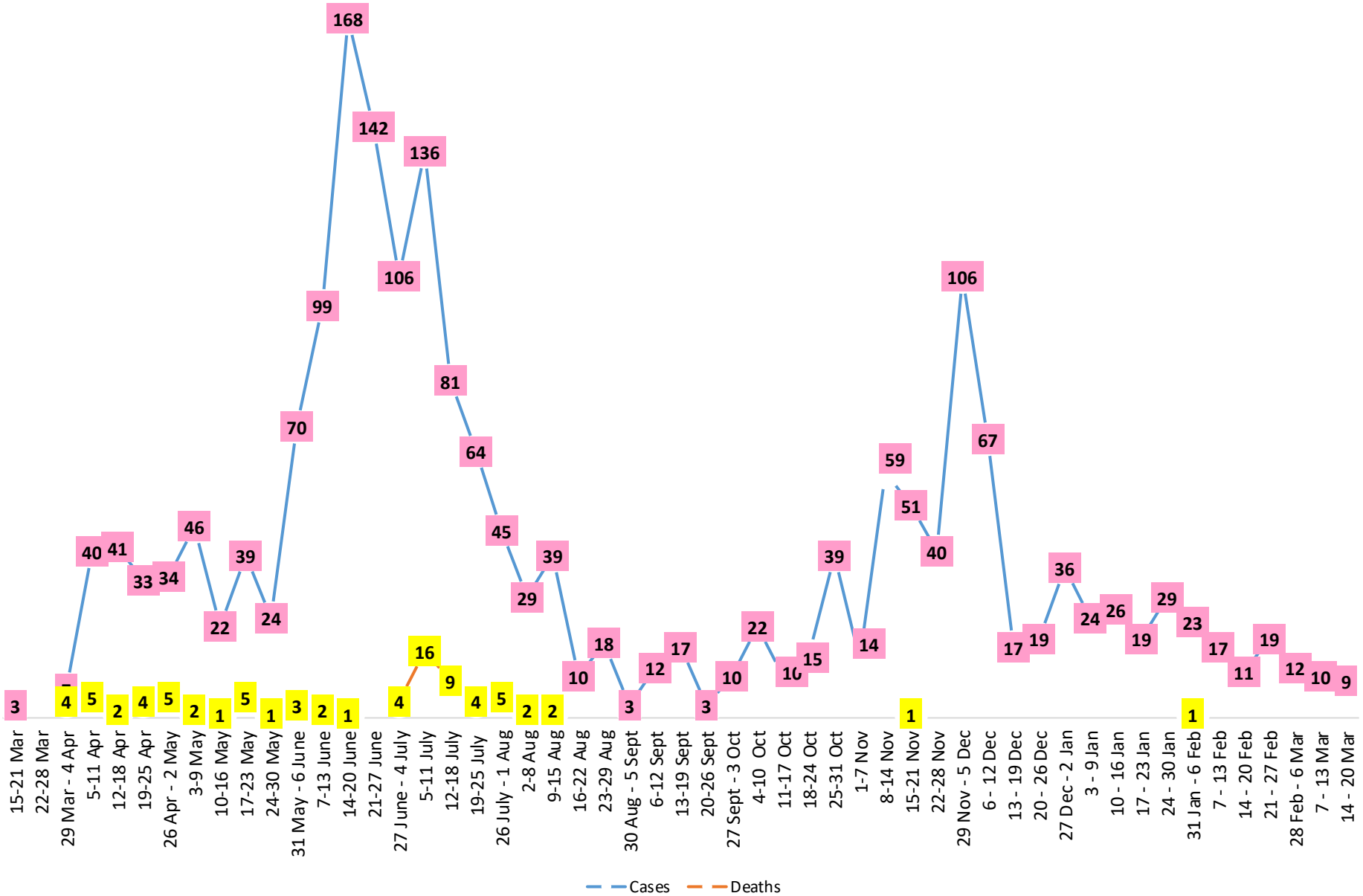
## Summary of COVID-19 Cases by Reporting County, Liberia, 16 March 2020 – 18 March 2021

<b>Bomi</b>	0	0	23
<b>Bong</b>	0	0	54
<b>Gbarpolu</b>	0	0	10
<b>Grand Bassa</b>	0	0	59
<b>Grand Cape Mount</b>	0	0	16
<b>Grand Kru</b>	0	0	18
<b>Grand Gedeh</b>	0	0	16
<b>Lofa</b>	0	0	45
<b>Margibi</b>	1	0	100
<b>Maryland</b>	0	0	34
<b>Montserrado</b>	<b>2</b>	<b>0</b>	<b>1551</b>
<b>Nimba</b>	0	0	72
<b>Rivercess</b>	0	0	5
<b>River Gee</b>	0	0	36
<b>Sinoe</b>	0	0	6
<b>NATIONAL</b>	<b>3</b>	<b>0</b>	<b>2045</b>

# Demographic Breakdown (Gender & Age) of Confirmed COVID-19 Cases (16 March 2020 – 18 March 2021)

County	<15 years		15 - 34		35 - 54		55+		All ages		Total Confirmed
	M	F	M	F	M	F	M	F	M	F	
Bomi	2	2	3	5	7	3	0	1	12	11	23
Bong	3	1	4	6	20	9	8	3	35	19	54
Gbarpolu	1	2	0	2	3	1	1	0	5	5	10
Grand Bassa	11	2	9	11	13	8	3	2	36	23	59
Grand Cape Mount	0	0	9	0	6	0	1	0	16	0	16
Grand Kru	0	0	2	5	4	5	2	0	8	10	18
Grand Gedeh	0	1	1	2	7	3	2	0	10	6	16
Lofa	3	3	8	3	13	5	8	2	32	13	45
Margibi	6	4	15	13	27	12	15	8	63	37	100
Maryland	2	0	10	6	9	4	1	2	22	12	34
<b>Montserrado</b>	53	49	366	214	441	191	167	70	1027	524	1551
Nimba	1	4	15	10	28	6	5	3	49	23	72
Rivercess	0	0	2	3	0	0	0	0	2	3	5
River Gee	0	0	4	3	19	5	5	0	28	8	36
Sinoe	0	0	1	0	4	1	0	0	5	1	6
<b>National</b>	<b>82</b>	<b>68</b>	<b>449</b>	<b>283</b>	<b>601</b>	<b>253</b>	<b>218</b>	<b>91</b>	<b>1350</b>	<b>695</b>	<b>2045</b>

# COVID-19 WEEKLY EPI-CURVE



# Summary of COVID-19 Deaths by Reporting County, Liberia, 16 March 2020 – 18 March 2021

County	aw Suspected Deaths	COVID-19 Treatment Unit	Total in COVID-19 Treatment Unit	Health Facility	Total in Health Facility	Community	Total in Community	Confirmed Deaths on Contact List	Cumulative Deaths
Bomi	0	0	0	0	1	0	0	0	1
Bong	0	0	0	0	4	0	1	0	5
Gbarpolu	0	0	0	0	2	0	0	0	2
Grand Bassa	0	0	0	0	0	0	0	0	0
Grand Cape Mount	0	0	0	0	0	0	0	0	0
Grand Gedeh	0	0	0	0	0	0	0	0	0
Grand Kru	0	0	0	0	0	0	0	0	0
Lofa	0	0	0	0	6	0	5	0	11
Maryland	0	0	0	0	2	0	0	0	2
Margibi	0	0	2	0	4	0	0	0	6
Montserrado	0	0	9	0	19	0	16	0	43
Nimba	0	0	2	0	5	0	4	0	11
Rivercess	0	0	0	0	1	0	1	0	2
River Gee	0	0	0	0	0	0	0	0	0
Sinoe	0	0	0	0	1	0	0	0	1
<b>National</b>	<b>0</b>	<b>0</b>	<b>13</b>	<b>0</b>	<b>45</b>	<b>0</b>	<b>27</b>	<b>0</b>	<b>85</b>

The Liberia Case Fatality rate (CFR) officially considered is for deaths that occurred among patients in care at the COVID-19 treatment units across the country. As of 30 December 2020 , a total of 13 deaths have been recorded CFR=1.3%. The country is however keeping active surveillance on community deaths and deaths in non COVID-19 treatment health units.

# Daily and Cumulative Healthcare Worker (HCW) COVID-19 Cases and Deaths by County, Liberia, 16 March 2020 – 18 March 2021

County	DAILY REPORT						CUMULATIVE CASES (ALIVE & DEAD)	
	New Suspected & High Risk Cases (Alive)			New Suspect Death	Laboratory Confirmed Cases	Confirmed Cases on Contact List	Confirmed	Deaths
	Suspect	High Risk	Total					
Bomi	0	0	0	0	0	0	5	0
Bong	0	0	0	0	0	0	19	3
Gbarpolu	0	0	0	0	0	0	1	0
Grand Bassa	0	0	0	0	0	0	21	0
Grand Gedeh	0	0	0	0	0	0	2	0
Grand Kru	0	0	0	0	0	0	14	0
Lofa	0	0	0	0	0	0	16	0
Margibi	0	0	0	0	0	0	12	1
Maryland	0	0	0	0	0	0	16	0
Montserrado	0	0	0	0	0	0	88	1
Nimba	0	0	0	0	0	0	14	0
Rivercess	0	0	0	0	0	0	3	0
River Gee	0	0	0	0	0	0	10	0
Sinoe	0	0	0	0	0	0	3	0
<b>NATIONAL</b>	<b>0</b>	<b>0</b>	<b>0</b>	<b>0</b>	<b>0</b>	<b>0</b>	<b>224</b>	<b>5</b>

# Cadre Cases and Deaths by Health Care Workers (16 March 2020 – 18 March 2021)

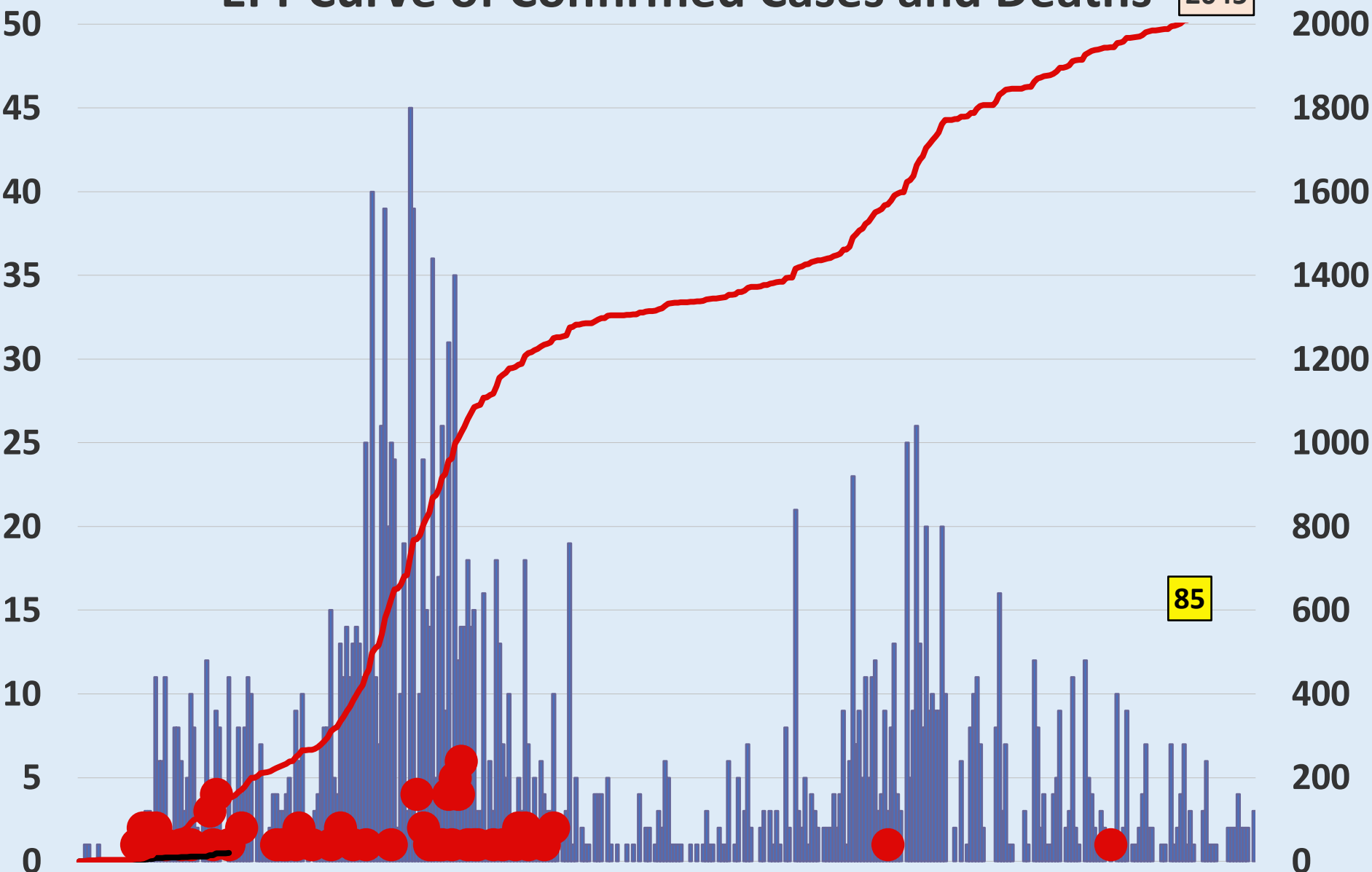
Health Care Worker Cadre	Montserratado		Margibi		Nimba		River Gee		Sinoe		Grand Kru		Gbarpolu		Bong		Lofa		Grand Bassa		Maryland		Bomi		Rivercess		Grand Gedeh		National (Total)	
	Cases	Deaths	Cases	Deaths	Cases	Deaths	Cases	Deaths	Cases	Deaths	Cases	Deaths	Cases	Deaths	Cases	Deaths	Cases	Deaths	Cases	Deaths	Cases	Deaths	Cases	Deaths	Cases	Deaths	Cases	Deaths		
Doctors	17	0	1	0	0	0	1	0	0	0	0	0	0	0	1	0	0	0	1	0	0	0	0	0	0	0	0	21	0	
Pharmacists	4	0	0	0	0	0	0	0	0	0	0	0	0	0	0	0	0	0	0	0	0	0	0	0	0	0	4	0		
Nurses	23	1	2	0	2	0	5	0	0	0	2	0	1	1	12	1	8	0	5	0	1	0	1	0	0	0	62	3		
Nurse Aid	0	0	0	0	2	0	0	0	0	0	4	0	0	0	0	0	0	8	0	2	0	0	0	0	0	0	16	0		
Midwife	0	0	0	0	0	0	1	0	0	0	1	0	0	0	1	0	1	0	1	0	0	0	0	0	0	0	5	0		
Physician Assistants	8	0	1	0	1	0	1	0	0	0	1	0	0	0	0	0	1	0	1	0	0	0	0	0	0	0	14	0		
Lab Technician	9	0	1	0	2	0	0	0	1	0	1	0	0	0	0	0	2	0	0	0	10	0	0	3	0	0	29	0		
Environmental Health Technicians	5	0	0	0	0	0	0	0	0	0	0	0	0	0	0	0	0	0	0	0	0	0	0	0	0	0	5	0		
Dieticians	0	0	7	1	0	0	0	0	0	0	0	0	0	0	0	0	0	0	0	0	0	0	0	0	0	0	7	1		
Hospital Cleaner	1	0	0	0	0	0	0	0	0	0	1	0	0	0	1	0	0	0	1	0	2	0	0	0	0	0	6	0		
Others*	21	0	0	0	7	0	2	0	2	0	4	0	0	0	4	1	4	0	4	0	1	0	4	0	2	0	55	1		
<b>Total:</b>	<b>88</b>	<b>1</b>	<b>12</b>	<b>1</b>	<b>14</b>	<b>0</b>	<b>10</b>	<b>0</b>	<b>3</b>	<b>0</b>	<b>14</b>	<b>0</b>	<b>1</b>	<b>1</b>	<b>19</b>	<b>2</b>	<b>16</b>	<b>0</b>	<b>21</b>	<b>0</b>	<b>16</b>	<b>0</b>	<b>5</b>	<b>0</b>	<b>3</b>	<b>0</b>	<b>2</b>	<b>0</b>	<b>224</b>	<b>5</b>

**\*Others include the following:**

**Radiologist, Microbiologist, Epidemiologist, Dispenser, Licensed Practical Nurse, Psychosocial worker, Hygienist, Logistician, Vaccinator, Ambulance Driver, Procurement Officer, Registrar, Accountant, Secretary, Hospital Administrator, Community Health Volunteer, GIS Specialist, EOC Coordinator**

# EPI-Curve of Confirmed Cases and Deaths

2045

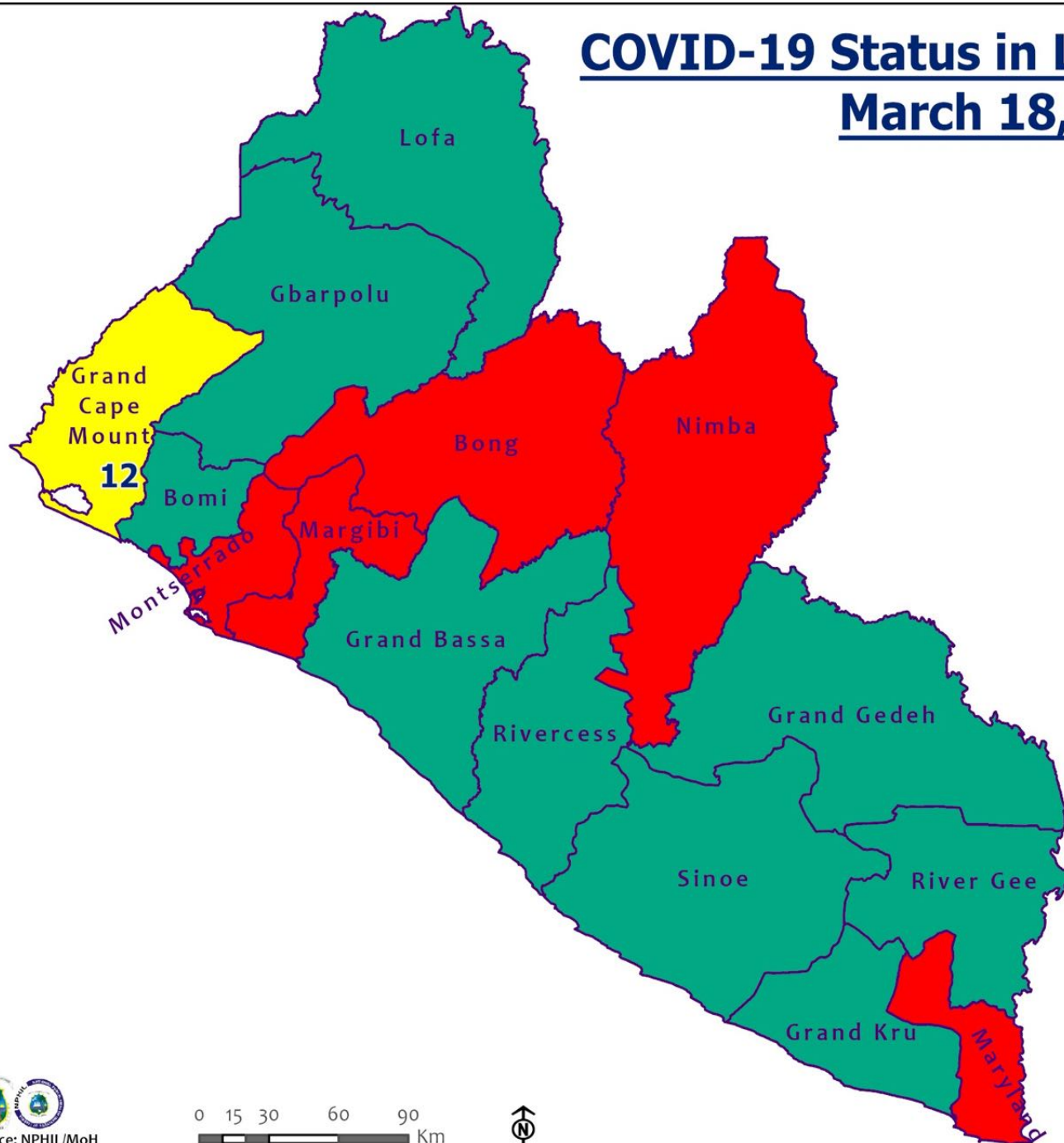


85

■ Daily Cases  
● Daily Deaths



# COVID-19 Status in Liberia by County March 18, 2021



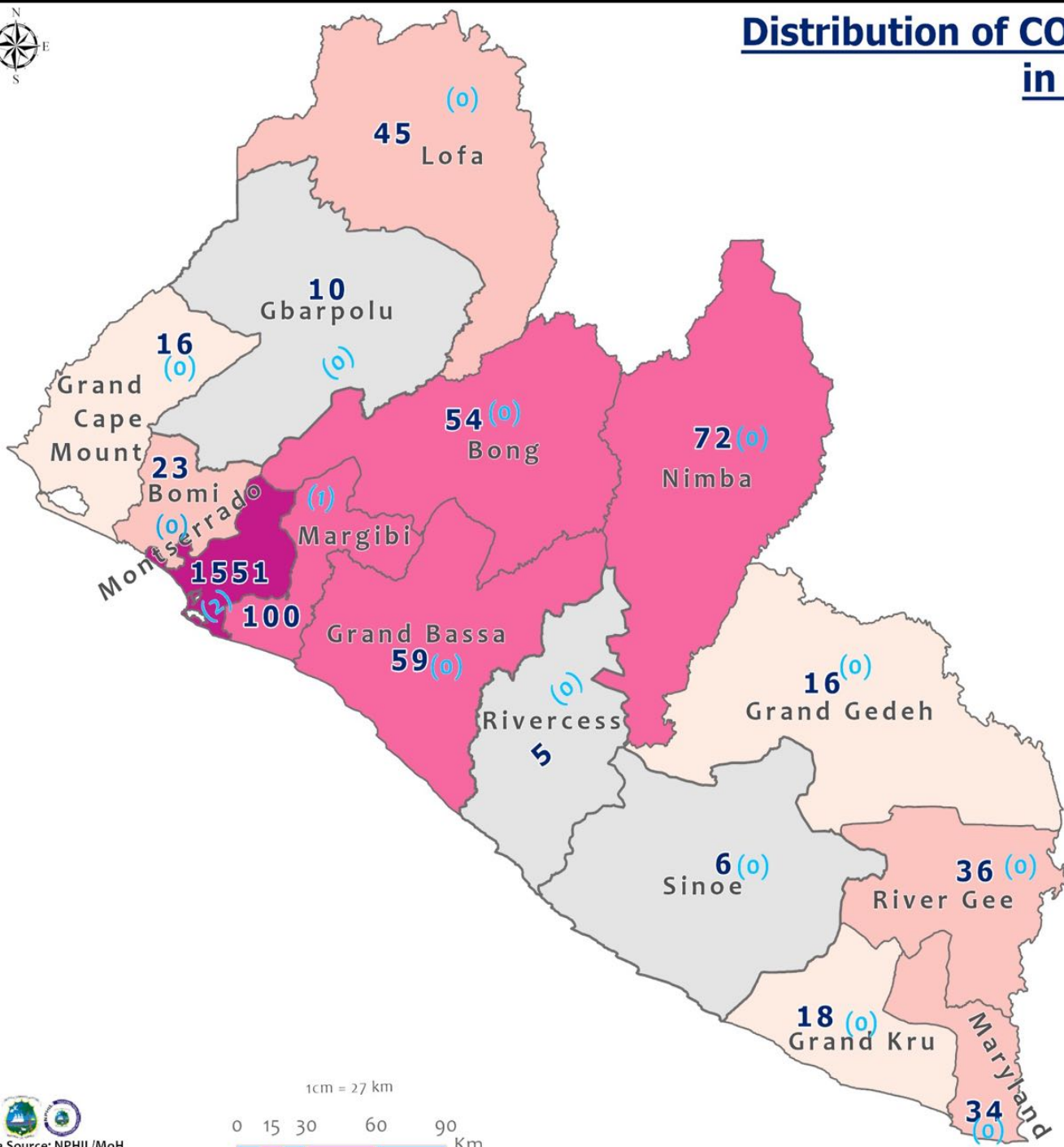
**Legend**

County Status

- Preparedness
- 28-Day Countdown
- Response



# Distribution of COVID-19 Cases by County in Liberia - March 18, 2021



Total cumulative cases:

**2045**

Total new cases:

**3**

## Legend

Number of Cases

- 0 - 10
- 11 - 20
- 21 - 50
- 51 - 200
- 201 - 2000

Cumulative cases

New cases

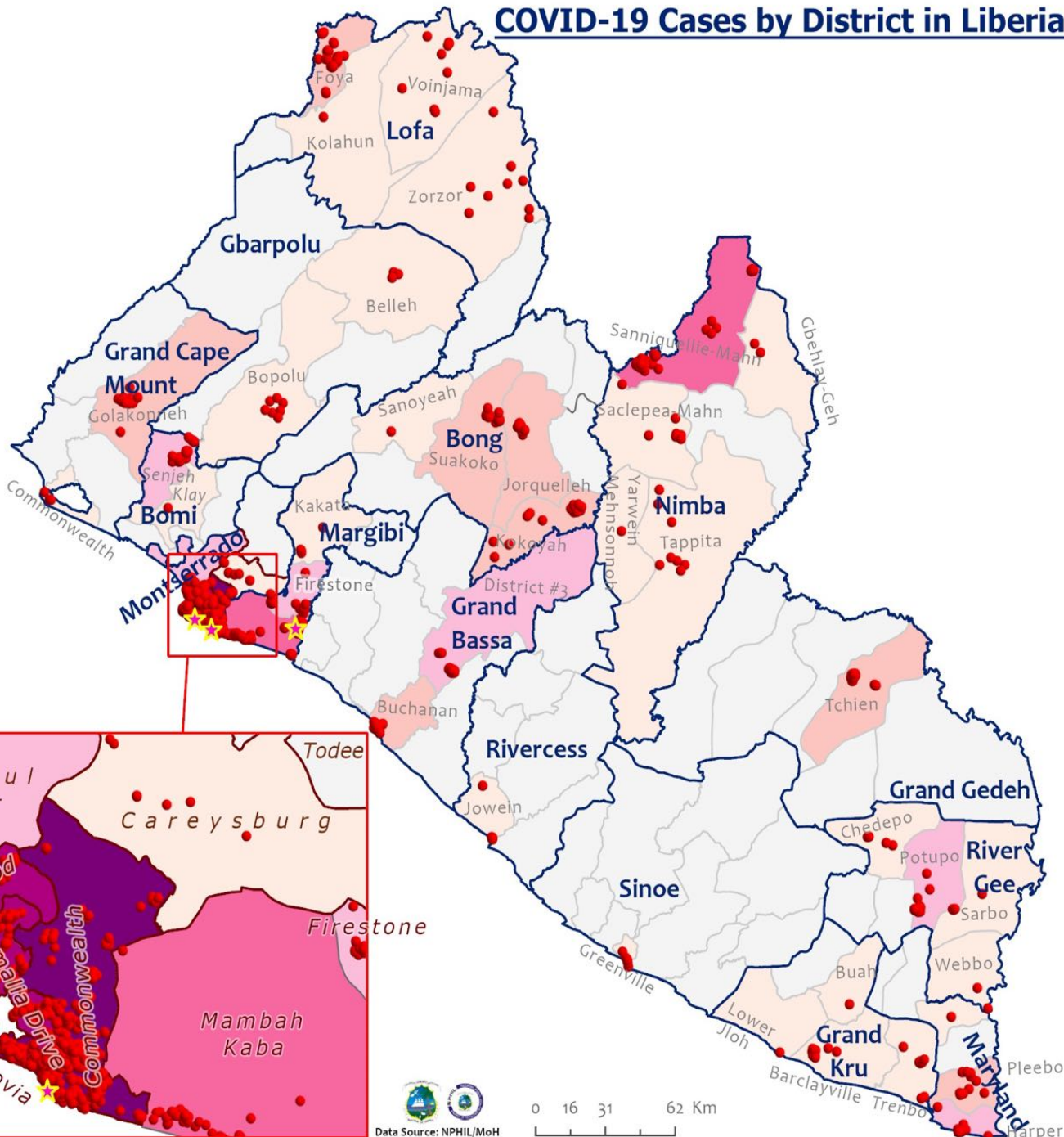
0 (0)

1cm = 27 km

0 15 30 60 90 Km



# COVID-19 Cases by District in Liberia - March 18, 2021



**Total Cases: 2045**

Affected Counties	Cumulative Cases
Montserrado	1551
Margibi	100
Nimba	72
Grand Bassa	59
Bong	54
Lofa	45
River Gee	36
Maryland	34
Bomi	23
Grand Kru	18
Grand Gedeh	16
Grand Cape Mount	16
Gbarpolu	10
Sinoe	6
Rivercess	5

## Legend

### Case Status

- ★ New confirmed case
- Confirmed cases

### Cases / District

- 0
- 1-10
- 11-20
- 21-50
- 51-100
- 101-200
- 201-600

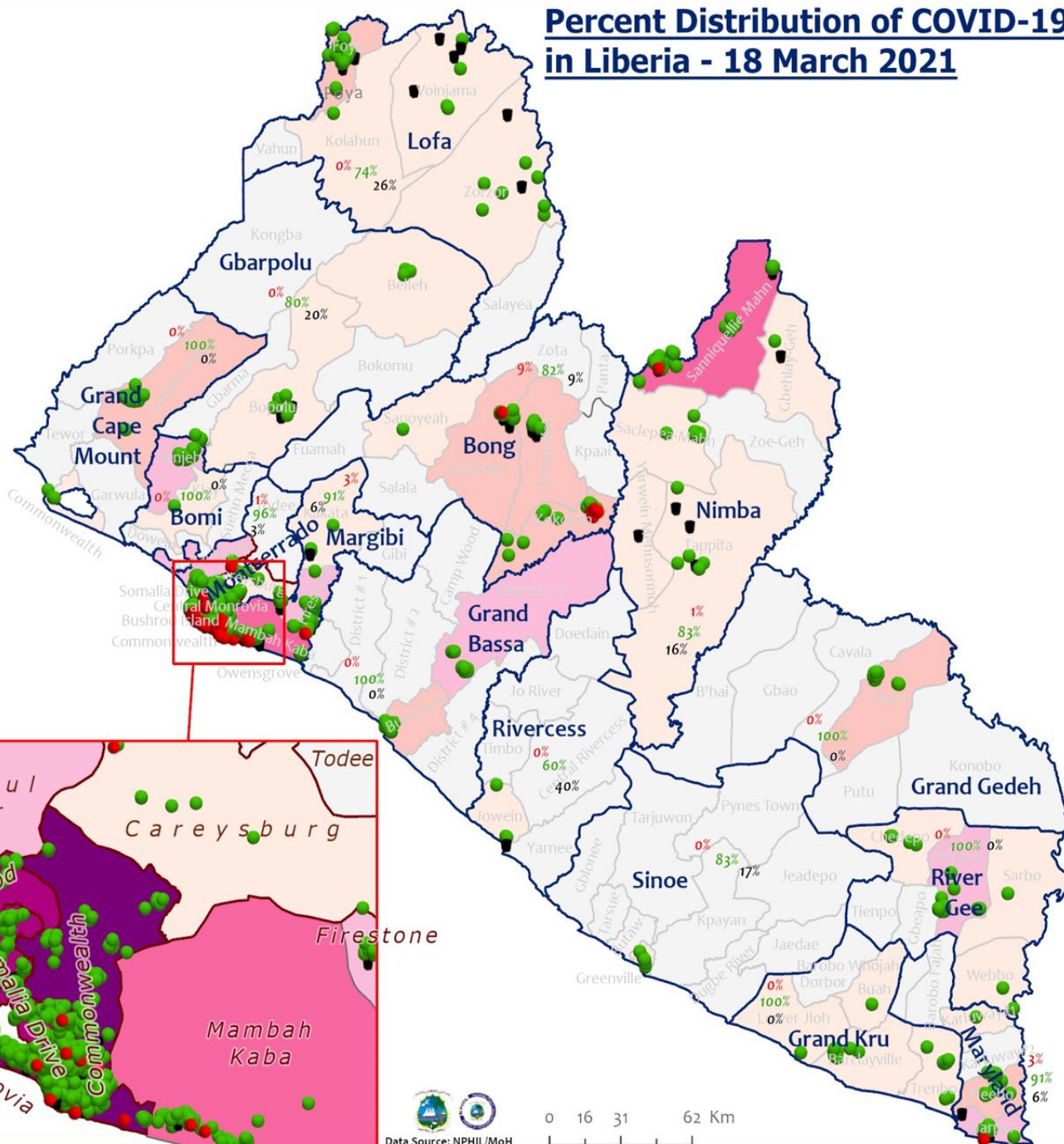


0 16 31 62 Km

Data Source: NP/IL/MoH



# Percent Distribution of COVID-19 Cases by Status in Liberia - 18 March 2021



**Total Cases: 2045**

Affected Counties	Cumulative Cases
Montserrado	1551
Margibi	100
Nimba	72
Grand Bassa	59
Bong	54
Lofa	45
River Gee	36
Maryland	34
Bomi	23
Grand Kru	18
Grand Gedeh	16
Grand Cape	16
Gbarpolu	10
Sinoe	6
Rivercess	5

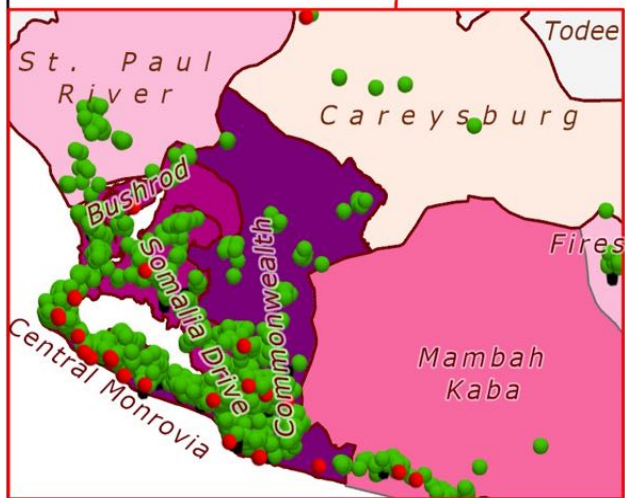
**Legend**

**Case Status**

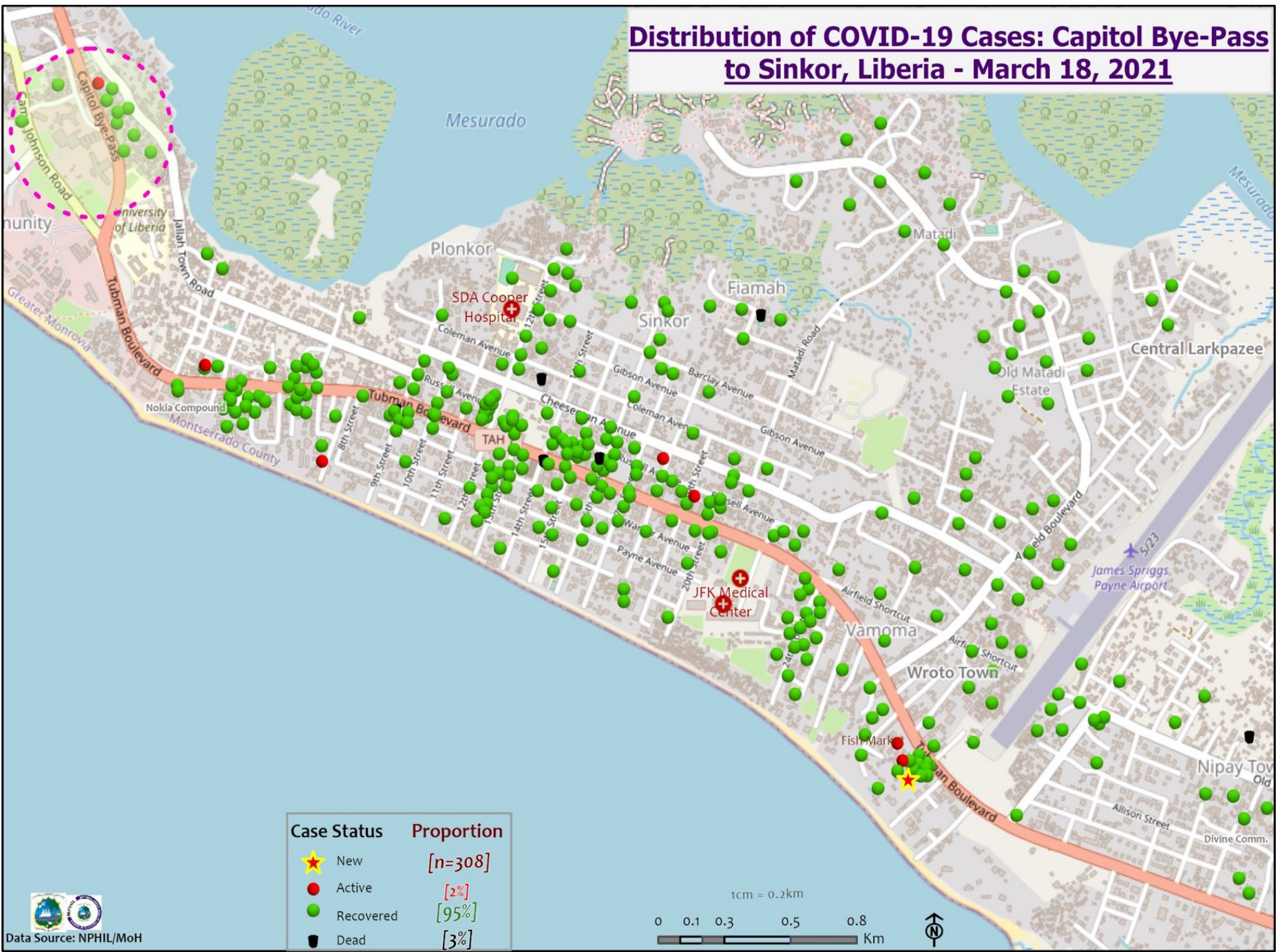
- Active [2%]
- Recovered [94%]
- Dead [4%]

**Cases / District**

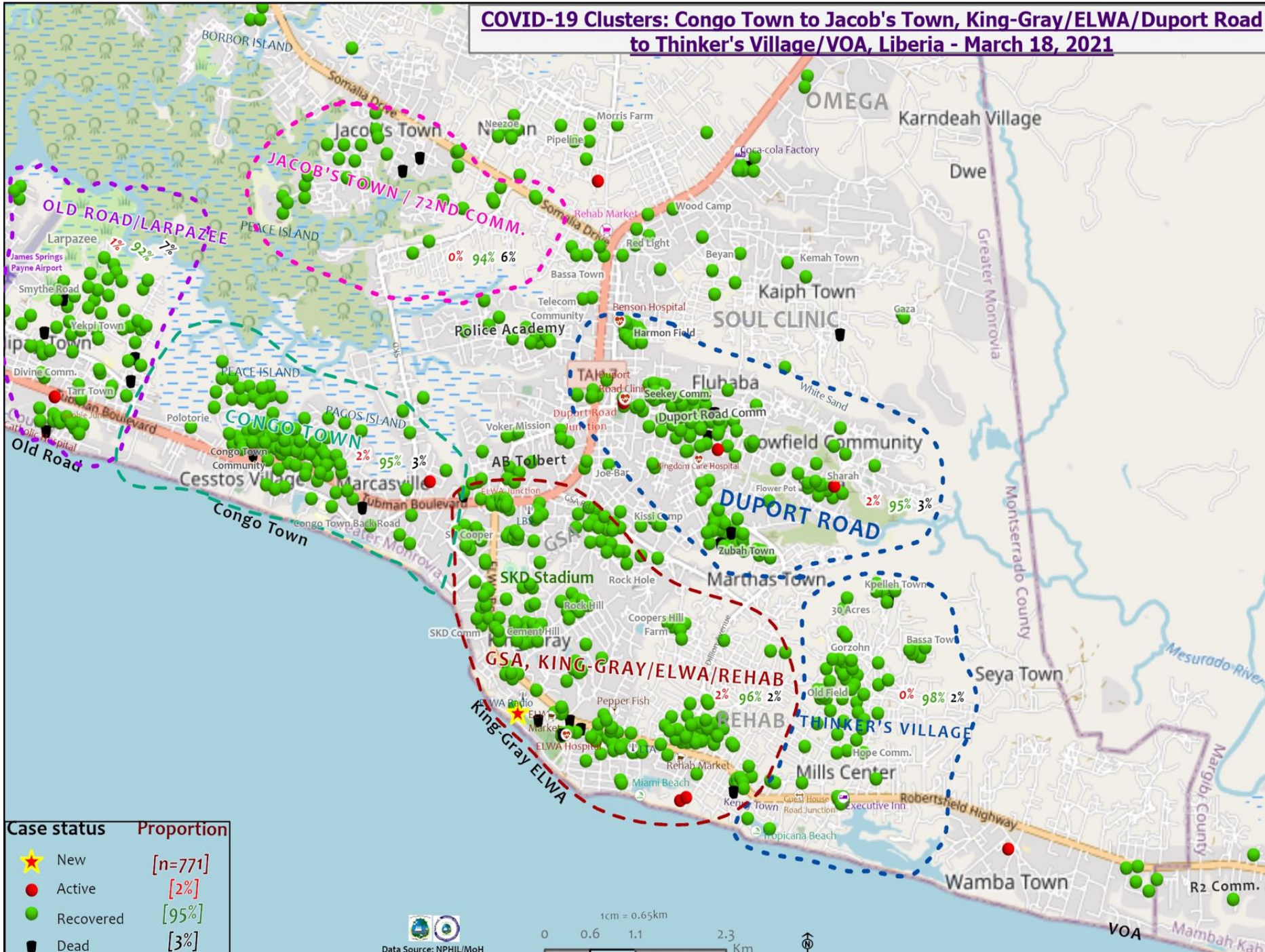
- 0
- 1-10
- 11-20
- 21-50
- 51-100
- 101-200
- 201-600



# Distribution of COVID-19 Cases: Capitol Bye-Pass to Sinkor, Liberia - March 18, 2021



# COVID-19 Clusters: Congo Town to Jacob's Town, King-Gray/ELWA/Duport Road to Thinker's Village/VOA, Liberia - March 18, 2021

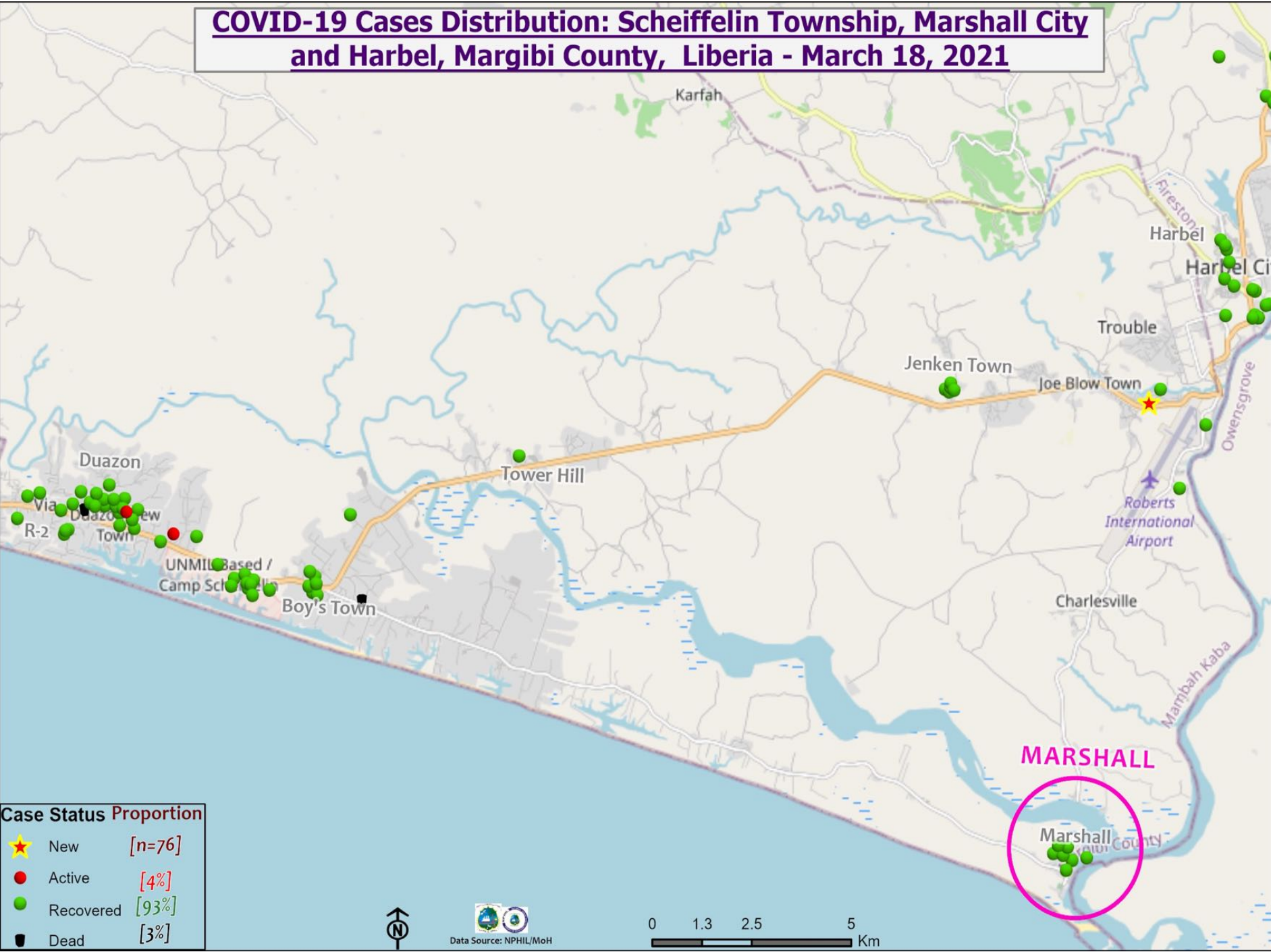


Case status	Proportion
★ New	[n=771]
● Active	[2%]
● Recovered	[95%]
■ Dead	[3%]



Data Source: NPHIL/MoH

# COVID-19 Cases Distribution: Scheffelin Township, Marshall City and Harbel, Margibi County, Liberia - March 18, 2021



# Summary of confirmed, recovered, active, and dead cases by reporting counties, Liberia, 16 March 2020 – 18 March 2021

County	Confirmed Cases		Recovered Cases		Active Cases	Dead Cases	
	New	Cum	New	Cum		New	Cum
Bomi	0	<b>23</b>	0	<b>22</b>	<b>0</b>	0	<b>1</b>
Bong	0	<b>53</b>	0	<b>45</b>	<b>3</b>	0	<b>5</b>
Gbarpolu	0	<b>10</b>	0	<b>8</b>	<b>0</b>	0	<b>2</b>
Grand Bassa	0	<b>59</b>	0	<b>59</b>	<b>0</b>	0	<b>0</b>
Grand Cape Mount	0	<b>16</b>	0	<b>16</b>	<b>0</b>	0	<b>0</b>
Grand Gedeh	0	<b>16</b>	0	<b>16</b>	<b>0</b>	0	<b>0</b>
Grand Kru	0	<b>18</b>	0	<b>18</b>	<b>0</b>	0	<b>0</b>
Lofa	0	<b>45</b>	0	<b>34</b>	<b>0</b>	0	<b>11</b>
Margibi	1	<b>100</b>	0	<b>93</b>	<b>1</b>	0	<b>6</b>
Maryland	0	<b>34</b>	0	<b>31</b>	<b>1</b>	0	<b>2</b>
Montserrado	2	<b>1552</b>	0	<b>1462</b>	<b>46</b>	0	<b>44</b>
Nimba	0	<b>72</b>	0	<b>60</b>	<b>1</b>	0	<b>11</b>
Rivercess	0	<b>5</b>	0	<b>3</b>	<b>0</b>	0	<b>2</b>
River Gee	0	<b>36</b>	0	<b>36</b>	<b>0</b>	0	<b>0</b>
Sinoe	0	<b>6</b>	0	<b>5</b>	<b>0</b>	0	<b>1</b>
<b>National</b>	<b>3</b>	<b>2045</b>	<b>0</b>	<b>1908</b>	<b>52</b>	<b>0</b>	<b>85</b>



# Daily Summary Report at Treatment Units – 18 March 2021

Treatment Facility Name	New Admissions	Cumulative Admission	Daily Discharges	Cumulative Recoveries	Daily Deaths	Cumulative Deaths	Currently in treatment
Bomi LGH Treatment Unit	0	18	0	18	0	0	0
Bong Treatment Unit	0	26	0	26	0	0	0
Chief Jallahlone Hospital Treatment Unit	0	1	0	1	0	0	0
Grand Bassa Arcelor Mittal Treatment Unit	0	6	0	6	0	0	0
Grand Bassa LGH Treatment Unit	0	3	0	3	0	0	0
LAC Treatment Unit	0	42	0	42	0	0	0
Starbase Treatment Unit	0	644	0	634	0	9	1
Union Treatment Center	0	78	0	78	0	0	0
Duside Hospital Treatment Unit	0	42	0	40	0	2	0
Martha Tubman Hospital Treatment Unit	0	13	0	13	0	0	0
Rally Time Treatment Unit	0	4	0	4	0	0	0
Sasstown Treatment Unit	0	7	0	7	0	0	0
Behwan Treatment Unit	0	7	0	7	0	0	0
FJ Grante Hospital Treatment Unit	0	5	0	5	0	0	0
JJ Dossen Hospital Treatment Unit	0	9	0	9	0	0	0
Pleebo Health Center Treatment Unit	0	21	0	21	0	0	0
Tellewoyan Memorial Hospital Treatment Unit	0	13	0	13	0	0	0
Foya Borma Hospital Treatment Unit	0	12	0	12	0	0	0
Zorzor Treatment Unit	0	6	0	6	0	0	0
Robert Sport Treatment Unit	0	1	0	1	0	0	0
Ganta United Methodist Hospital Treatment Unit	0	1	0	1	0	0	0
Arcelor Mittal Yekepa Treatment Unit	0	12	0	12	0	0	0
Jackson F. Doe Treatment Unit	0	5	0	4	0	1	0
St. Frances Hospital Treatment Unit	0	2	0	2	0	0	0
Fish Town Hospital Treatment Unit	0	36	0	36	0	0	0
E&J Medical Center Treatment Unit	0	20	0	19	0	1	0
<b>TOTAL</b>	<b>0</b>	<b>1034</b>	<b>0</b>	<b>1020</b>	<b>0</b>	<b>13</b>	<b>1</b>

# Home-Base Care of COVID-19 Cases

County	New Admissions	Currently in Admissions	No. Followed-up (In-person/Phone)	Cumulative Admissions	New Recoveries	Cumulative Recoveries	Referrals to TU	Cumulative Referrals to TU	New Death	Cumulative Deaths
Montserrado	0	11	11	198	1	185	0	5	0	0
Nimba				0						
Margibi				0						
Maryland				0						
Bong				0						
<b>Total:</b>	0	11	11	198	0	185	0	5	0	0

# Laboratory Samples Evaluated – 18 March 2021

County	Sample Evaluated	New Positive	Repeat Positive	Initial Negative	Repeat Test Negative	Pending Lab Result
Bomi	2	0	0	2	0	0
Bong	1	0	0	1	0	0
Grand Cape Mount	1	0	0	1	0	0
Grand Gedeh	1	0	0	1	0	0
Margibi	18	1	0	16	0	1
Montserrado	282	2	1	271	0	8
Nimba	3	0	0	3	0	0
<b>TOTAL</b>	<b>308</b>	<b>3</b>	<b>1</b>	<b>295</b>	<b>0</b>	<b>9</b>
<b>Outgoing Traveler</b>	<b>123</b>	<b>1</b>	<b>1</b>	<b>121</b>	<b>0</b>	<b>0</b>
<b>Incoming Traveler</b>	<b>185</b>	<b>2</b>	<b>0</b>	<b>174</b>	<b>0</b>	<b>9</b>
<b>Voluntary</b>	<b>0</b>	<b>0</b>	<b>0</b>	<b>0</b>	<b>0</b>	<b>0</b>
<b>NRL</b>	<b>307</b>	<b>3</b>	<b>1</b>	<b>294</b>	<b>0</b>	<b>9</b>
<b>UN Clinic Lab</b>	<b>1</b>	<b>0</b>	<b>0</b>	<b>1</b>	<b>0</b>	<b>0</b>

## Summary of COVID-19 Daily PoE in Response Counties – 18 March 2021

Date of travel	Type of PoE	Point of Entry Name	Type of conveyance	# of Travelers Arrival	# of Travelers departure	# of travelers with elevated temp	Total Travelers screened		Total Passengers tested on Arrival	Total Foreign diplomat Exempted	# of Children under 5 years not tested	Passengers staying less than 5 days exempted	Total passports collected	Total # of Travelers
							Male	Female						
18-Mar	Airport		Air Morac	0	0	0	0	0	0	0	0	0	0	0
			Brussels	206	72	0	184	94	192	5	8	1	0	278
			AWA	15	16	0	24	7	15	0	0	0	1	31
			Air France	28	22	0	29	21	26	0	2	0	0	50
			Air Cote D'Ivoire	21	8	0	20	9	17	0	2	2	3	29
			DHL	0	0	0	0	0	0	0	0	0	0	0
			Kenya	39	59	0	66	32	35	2	2	0	1	98
			Asky	0	0	0	0	0	0	0	0	0	0	0
			MNG (Special flight)	7	0	0	7	0	7	0	0	0	0	7
	James Spriggs Payne Airport		0	0	0	0	0	0	0	0	0	0	0	
	Land	Ganta Main	Land	0	0	0	0	0	0	0	0	0	0	0
		Yekepa	Land	0	0	0	0	0	0	0	0	0	0	0
		Loguatu	Land	0	0	0	0	0	0	0	0	0	0	0
		Bo Water Side	Land	63	45	0	36	72	0	0	0	0	0	108
Seaport	Buchanan	Vessel	0	0	0	0	0	0	0	0	0	0	0	
	Freeport of Monrovia	Vessel	12	0	0	12	0	0	0	0	0	0	12	
<b>Total:</b>				391	222	0	378	235	292	7	14	3	5	613

# Summary of COVID-19 Contact Tracing in Response Counties

County	New Contacts Line listed	Cumulative Contacts	No. of Health Care Workers as Contacts	Cumulative no. of Health Care Workers as contacts	Contacts became a case	Cumulative contacts that became a case	Contacts Completed 14 Days	Cumulative Contacts Completing 14 Days	Contacts Under Follow-up	Contacts lost to Follow-up
<b>Montserratado</b>	0	5516	0	508	0	189	0	5411	26	3
<b>Margibi</b>	0	480	0	125	0	42	0	470	12	0
<b>Grand Bassa</b>	0	457	0	140	0	51	0	410	0	0
<b>Sinoe</b>	0	191	0	30	0	1	0	191	0	0
<b>Lofa</b>	0	758	0	103	0	34	0	726	0	0
<b>Nimba</b>	0	613	0	53	0	25	0	550	0	0
<b>Bong</b>	0	302	0	70	0	28	0	300	2	0
<b>Gbarpolu</b>	0	87	0	13	0	8	0	87	0	0
<b>Grand Cape Mount</b>	0	49	0	3	0	4	0	51	0	0
<b>RiverGee</b>	0	123	0	13	0	30	0	123	0	0
<b>Maryland</b>	0	208	0	28	0	19	0	136	0	0
<b>Bomi</b>	0	180	0	17	0	15	0	177	0	0
<b>Rivercess</b>	0	102	0	55	0	0	0	88	0	0
<b>Grand Kru</b>	0	333	0	131	0	17	0	330	0	0
<b>Grand Gedeh</b>	0	163	0	49	0	6	0	125	0	0
<b>National</b>	<b>0</b>	<b>9562</b>	<b>0</b>	<b>1338</b>	<b>0</b>	<b>469</b>	<b>0</b>	<b>9175</b>	<b>40</b>	<b>3</b>

**Thank you for Listening**