



# **Liberia COVID-19 Daily Sitrep 363 (13<sup>th</sup> March 2021)**

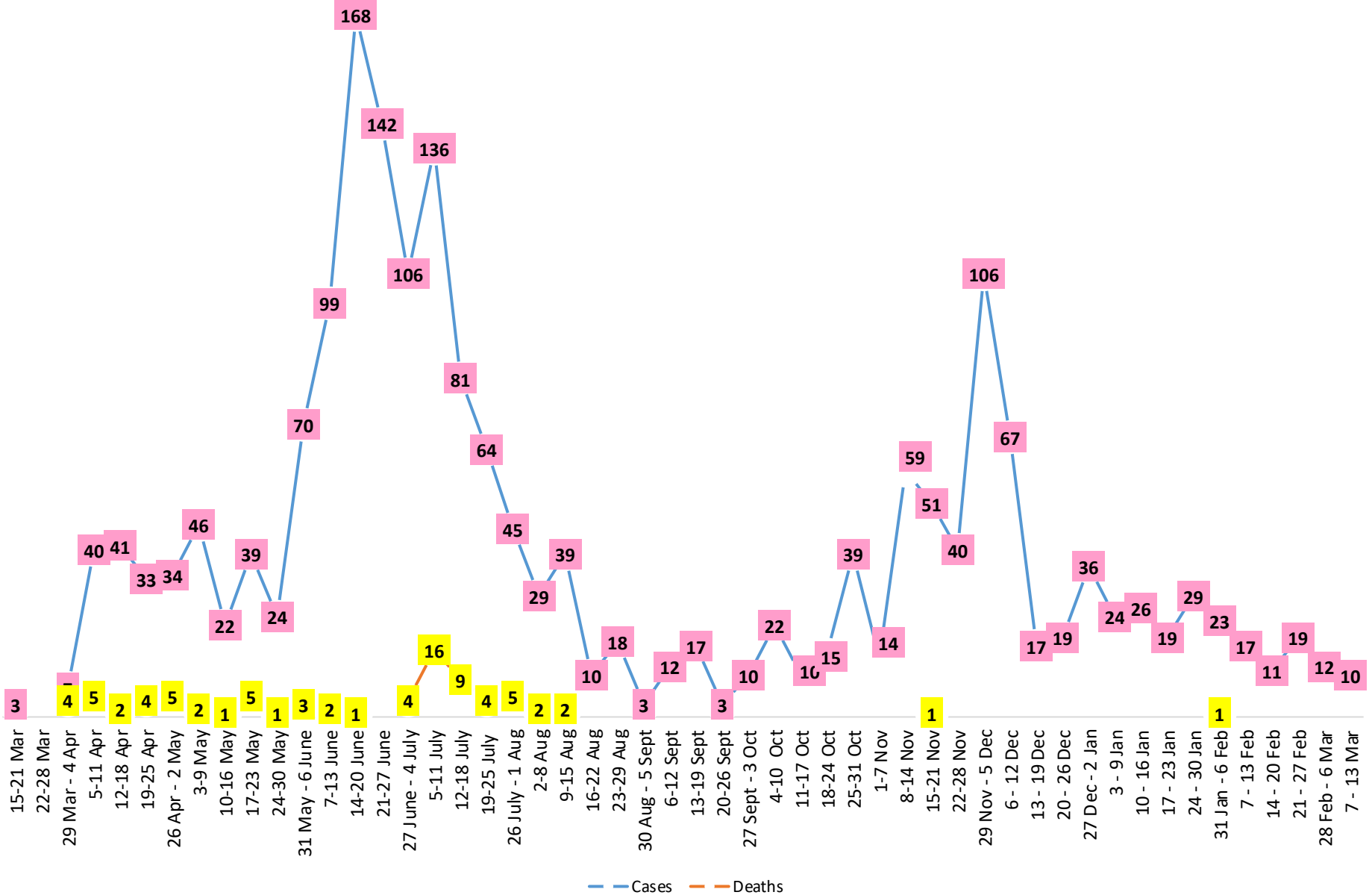
## Summary of COVID-19 Cases by Reporting County, Liberia, 16 March 2020 – 13 March 2021

|                         |          |          |             |
|-------------------------|----------|----------|-------------|
| <b>Bomi</b>             | 0        | 0        | 23          |
| <b>Bong</b>             | 1        | 0        | 53          |
| <b>Gbarpolu</b>         | 0        | 0        | 10          |
| <b>Grand Bassa</b>      | 0        | 0        | 59          |
| <b>Grand Cape Mount</b> | 0        | 0        | 16          |
| <b>Grand Kru</b>        | 0        | 0        | 18          |
| <b>Grand Gedeh</b>      | 0        | 0        | 16          |
| <b>Lofa</b>             | 0        | 0        | 45          |
| <b>Margibi</b>          | 0        | 0        | 98          |
| <b>Maryland</b>         | 0        | 0        | 34          |
| <b>Montserrado</b>      | <b>3</b> | <b>0</b> | <b>1545</b> |
| <b>Nimba</b>            | 0        | 0        | 72          |
| <b>Rivercess</b>        | 0        | 0        | 5           |
| <b>River Gee</b>        | 0        | 0        | 36          |
| <b>Sinoe</b>            | 0        | 0        | 6           |
| <b>NATIONAL</b>         | <b>4</b> | <b>0</b> | <b>2036</b> |

# Demographic Breakdown (Gender & Age) of Confirmed COVID-19 Cases (16 March 2020 – 13 March 2021)

| County             | <15 years |           | 15 - 34    |            | 35 - 54    |            | 55+        |           | All ages    |            | Total Confirmed |
|--------------------|-----------|-----------|------------|------------|------------|------------|------------|-----------|-------------|------------|-----------------|
|                    | M         | F         | M          | F          | M          | F          | M          | F         | M           | F          |                 |
| Bomi               | 2         | 2         | 3          | 5          | 7          | 3          | 0          | 1         | 12          | 11         | 23              |
| Bong               | 3         | 1         | 4          | 6          | 19         | 9          | 8          | 3         | 34          | 19         | 53              |
| Gbarpolu           | 1         | 2         | 0          | 2          | 3          | 1          | 1          | 0         | 5           | 5          | 10              |
| Grand Bassa        | 11        | 2         | 9          | 11         | 13         | 8          | 3          | 2         | 36          | 23         | 59              |
| Grand Cape Mount   | 0         | 0         | 9          | 0          | 6          | 0          | 1          | 0         | 16          | 0          | 16              |
| Grand Kru          | 0         | 0         | 2          | 5          | 4          | 5          | 2          | 0         | 8           | 10         | 18              |
| Grand Gedeh        | 0         | 1         | 1          | 2          | 7          | 3          | 2          | 0         | 10          | 6          | 16              |
| Lofa               | 3         | 3         | 8          | 3          | 13         | 5          | 8          | 2         | 32          | 13         | 45              |
| Margibi            | 6         | 4         | 14         | 13         | 26         | 12         | 15         | 8         | 61          | 37         | 98              |
| Maryland           | 2         | 0         | 10         | 6          | 9          | 4          | 1          | 2         | 22          | 12         | 34              |
| <b>Montserrado</b> | 53        | 49        | 365        | 213        | 439        | 190        | 166        | 70        | 1023        | 522        | 1545            |
| Nimba              | 1         | 4         | 15         | 10         | 28         | 6          | 5          | 3         | 49          | 23         | 72              |
| Rivercess          | 0         | 0         | 2          | 3          | 0          | 0          | 0          | 0         | 2           | 3          | 5               |
| River Gee          | 0         | 0         | 4          | 3          | 19         | 5          | 5          | 0         | 28          | 8          | 36              |
| Sinoe              | 0         | 0         | 1          | 0          | 4          | 1          | 0          | 0         | 5           | 1          | 6               |
| <b>National</b>    | <b>82</b> | <b>68</b> | <b>447</b> | <b>282</b> | <b>597</b> | <b>252</b> | <b>217</b> | <b>91</b> | <b>1343</b> | <b>693</b> | <b>2036</b>     |

# COVID-19 WEEKLY EPI-CURVE



# Summary of COVID-19 Deaths by Reporting County, Liberia, 16 March 2020 – 13 March 2021

| County           | aw Suspected Deaths | COVID-19 Treatment Unit | Total in COVID-19 Treatment Unit | Health Facility | Total in Health Facility | Community | Total in Community | Confirmed Deaths on Contact List | Cumulative Deaths |
|------------------|---------------------|-------------------------|----------------------------------|-----------------|--------------------------|-----------|--------------------|----------------------------------|-------------------|
| Bomi             | 0                   | 0                       | 0                                | 0               | 1                        | 0         | 0                  | 0                                | 1                 |
| Bong             | 0                   | 0                       | 0                                | 0               | 4                        | 0         | 1                  | 0                                | 5                 |
| Gbarpolu         | 0                   | 0                       | 0                                | 0               | 2                        | 0         | 0                  | 0                                | 2                 |
| Grand Bassa      | 0                   | 0                       | 0                                | 0               | 0                        | 0         | 0                  | 0                                | 0                 |
| Grand Cape Mount | 0                   | 0                       | 0                                | 0               | 0                        | 0         | 0                  | 0                                | 0                 |
| Grand Gedeh      | 0                   | 0                       | 0                                | 0               | 0                        | 0         | 0                  | 0                                | 0                 |
| Grand Kru        | 0                   | 0                       | 0                                | 0               | 0                        | 0         | 0                  | 0                                | 0                 |
| Lofa             | 0                   | 0                       | 0                                | 0               | 6                        | 0         | 5                  | 0                                | 11                |
| Maryland         | 0                   | 0                       | 0                                | 0               | 2                        | 0         | 0                  | 0                                | 2                 |
| Margibi          | 0                   | 0                       | 2                                | 0               | 4                        | 0         | 0                  | 0                                | 6                 |
| Montserrado      | 0                   | 0                       | 9                                | 0               | 19                       | 0         | 16                 | 0                                | 43                |
| Nimba            | 0                   | 0                       | 2                                | 0               | 5                        | 0         | 4                  | 0                                | 11                |
| Rivercess        | 0                   | 0                       | 0                                | 0               | 1                        | 0         | 1                  | 0                                | 2                 |
| River Gee        | 0                   | 0                       | 0                                | 0               | 0                        | 0         | 0                  | 0                                | 0                 |
| Sinoe            | 0                   | 0                       | 0                                | 0               | 1                        | 0         | 0                  | 0                                | 1                 |
| <b>National</b>  | <b>0</b>            | <b>0</b>                | <b>13</b>                        | <b>0</b>        | <b>45</b>                | <b>0</b>  | <b>27</b>          | <b>0</b>                         | <b>85</b>         |

The Liberia Case Fatality rate (CFR) officially considered is for deaths that occurred among patients in care at the COVID-19 treatment units across the country. As of 30 December 2020 , a total of 13 deaths have been recorded CFR=1.3%. The country is however keeping active surveillance on community deaths and deaths in non COVID-19 treatment health units.

# Daily and Cumulative Healthcare Worker (HCW) COVID-19 Cases and Deaths by County, Liberia, 16 March 2020 – 13 March 2021

| County          | DAILY REPORT                            |           |          |                   |                            |                                 | CUMULATIVE CASES (ALIVE & DEAD) |          |
|-----------------|---|-----------|----------|-------------------|----------------------------|---------------------------------|---------------------------------|----------|
|                 | New Suspected & High Risk Cases (Alive) |           |          | New Suspect Death | Laboratory Confirmed Cases | Confirmed Cases on Contact List | Confirmed                       | Deaths   |
|                 | Suspect                                 | High Risk | Total    |                   |                            |                                 |                                 |          |
| Bomi            | 0                                       | 0         | 0        | 0                 | 0                          | 0                               | 5                               | 0        |
| Bong            | 0                                       | 0         | 0        | 0                 | 0                          | 0                               | 19                              | 3        |
| Gbarpolu        | 0                                       | 0         | 0        | 0                 | 0                          | 0                               | 1                               | 0        |
| Grand Bassa     | 0                                       | 0         | 0        | 0                 | 0                          | 0                               | 21                              | 0        |
| Grand Gedeh     | 0                                       | 0         | 0        | 0                 | 0                          | 0                               | 2                               | 0        |
| Grand Kru       | 0                                       | 0         | 0        | 0                 | 0                          | 0                               | 14                              | 0        |
| Lofa            | 0                                       | 0         | 0        | 0                 | 0                          | 0                               | 16                              | 0        |
| Margibi         | 0                                       | 0         | 0        | 0                 | 0                          | 0                               | 12                              | 1        |
| Maryland        | 0                                       | 0         | 0        | 0                 | 0                          | 0                               | 16                              | 0        |
| Montserrado     | 0                                       | 0         | 0        | 0                 | 0                          | 0                               | 88                              | 1        |
| Nimba           | 0                                       | 0         | 0        | 0                 | 0                          | 0                               | 14                              | 0        |
| Rivercess       | 0                                       | 0         | 0        | 0                 | 0                          | 0                               | 3                               | 0        |
| River Gee       | 0                                       | 0         | 0        | 0                 | 0                          | 0                               | 10                              | 0        |
| Sinoe           | 0                                       | 0         | 0        | 0                 | 0                          | 0                               | 3                               | 0        |
| <b>NATIONAL</b> | <b>0</b>                                | <b>0</b>  | <b>0</b> | <b>0</b>          | <b>0</b>                   | <b>0</b>                        | <b>224</b>                      | <b>5</b> |

# Cadre Cases and Deaths by Health Care Workers (16 March 2020 – 13 March 2021)

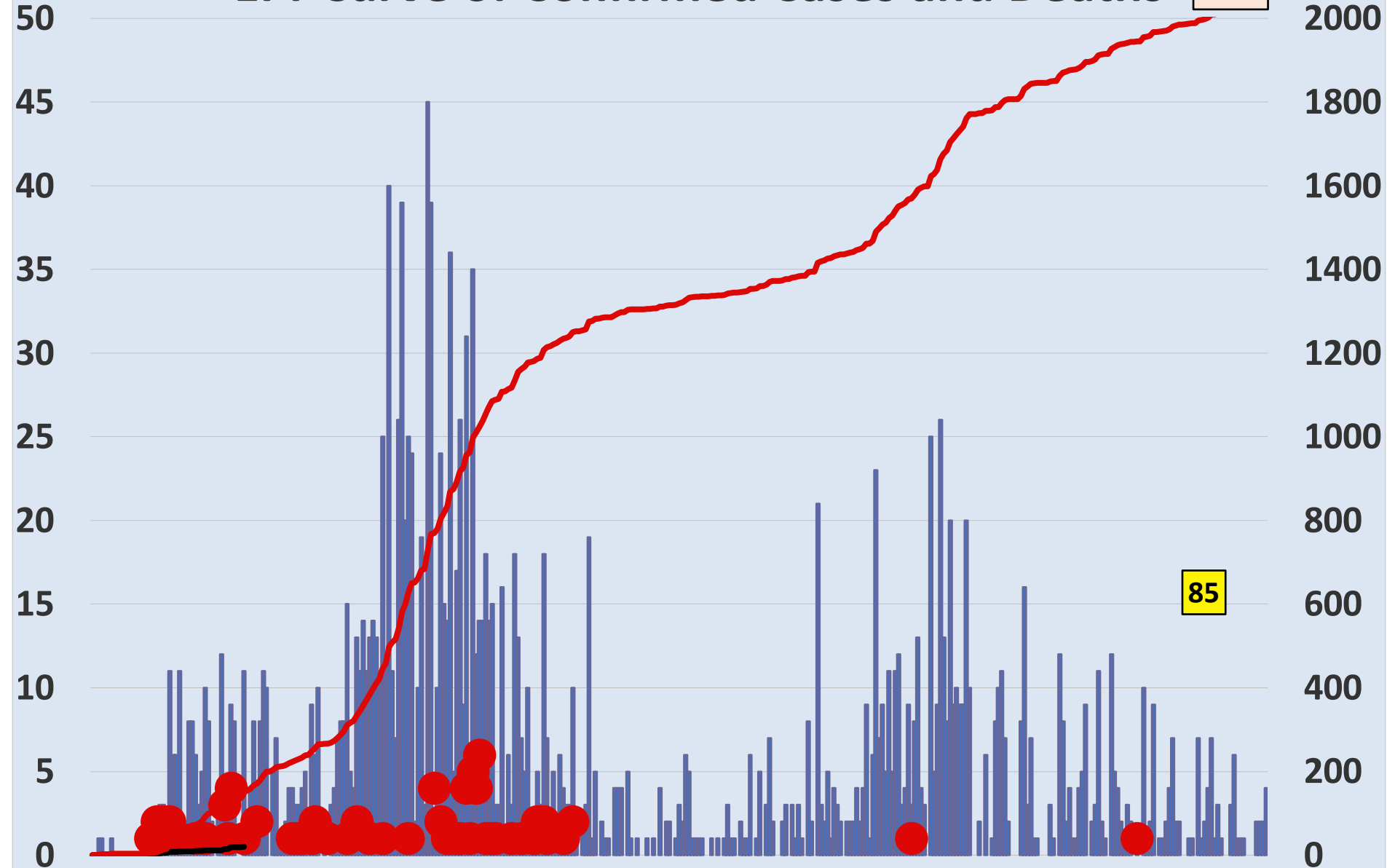
| Health Care Worker Cadre         | Montserratado |          | Margibi   |          | Nimba     |          | River Gee |          | Sinoe    |          | Grand Kru |          | Gbarpolu |          | Bong      |          | Lofa      |          | Grand Bassa |          | Maryland  |          | Bomi     |          | Rivercess |          | Grand Gedeh |          | National (Total) |          |
|----------------------------------|---------------|----------|-----------|----------|-----------|----------|-----------|----------|----------|----------|-----------|----------|----------|----------|-----------|----------|-----------|----------|-------------|----------|-----------|----------|----------|----------|-----------|----------|-------------|----------|------------------|----------|
|                                  | Cases         | Deaths   | Cases     | Deaths   | Cases     | Deaths   | Cases     | Deaths   | Cases    | Deaths   | Cases     | Deaths   | Cases    | Deaths   | Cases     | Deaths   | Cases     | Deaths   | Cases       | Deaths   | Cases     | Deaths   | Cases    | Deaths   | Cases     | Deaths   | Cases       | Deaths   |                  |          |
| Doctors                          | 17            | 0        | 1         | 0        | 0         | 0        | 1         | 0        | 0        | 0        | 0         | 0        | 0        | 0        | 1         | 0        | 0         | 0        | 1           | 0        | 0         | 0        | 0        | 0        | 0         | 0        | 0           | 21       | 0                |          |
| Pharmacists                      | 4             | 0        | 0         | 0        | 0         | 0        | 0         | 0        | 0        | 0        | 0         | 0        | 0        | 0        | 0         | 0        | 0         | 0        | 0           | 0        | 0         | 0        | 0        | 0        | 0         | 0        | 0           | 4        | 0                |          |
| Nurses                           | 23            | 1        | 2         | 0        | 2         | 0        | 5         | 0        | 0        | 0        | 2         | 0        | 1        | 1        | 12        | 1        | 8         | 0        | 5           | 0        | 1         | 0        | 1        | 0        | 0         | 0        | 0           | 62       | 3                |          |
| Nurse Aid                        | 0             | 0        | 0         | 0        | 2         | 0        | 0         | 0        | 0        | 0        | 4         | 0        | 0        | 0        | 0         | 0        | 0         | 8        | 0           | 2        | 0         | 0        | 0        | 0        | 0         | 0        | 0           | 16       | 0                |          |
| Midwife                          | 0             | 0        | 0         | 0        | 0         | 0        | 1         | 0        | 0        | 0        | 1         | 0        | 0        | 0        | 1         | 0        | 1         | 0        | 1           | 0        | 0         | 0        | 0        | 0        | 0         | 0        | 0           | 5        | 0                |          |
| Physician Assistants             | 8             | 0        | 1         | 0        | 1         | 0        | 1         | 0        | 0        | 0        | 1         | 0        | 0        | 0        | 0         | 0        | 1         | 0        | 1           | 0        | 0         | 0        | 0        | 0        | 0         | 0        | 0           | 14       | 0                |          |
| Lab Technician                   | 9             | 0        | 1         | 0        | 2         | 0        | 0         | 0        | 1        | 0        | 1         | 0        | 0        | 0        | 0         | 0        | 2         | 0        | 0           | 0        | 10        | 0        | 0        | 0        | 3         | 0        | 0           | 29       | 0                |          |
| Environmental Health Technicians | 5             | 0        | 0         | 0        | 0         | 0        | 0         | 0        | 0        | 0        | 0         | 0        | 0        | 0        | 0         | 0        | 0         | 0        | 0           | 0        | 0         | 0        | 0        | 0        | 0         | 0        | 0           | 5        | 0                |          |
| Dieticians                       | 0             | 0        | 7         | 1        | 0         | 0        | 0         | 0        | 0        | 0        | 0         | 0        | 0        | 0        | 0         | 0        | 0         | 0        | 0           | 0        | 0         | 0        | 0        | 0        | 0         | 0        | 0           | 7        | 1                |          |
| Hospital Cleaner                 | 1             | 0        | 0         | 0        | 0         | 0        | 0         | 0        | 0        | 0        | 1         | 0        | 0        | 0        | 1         | 0        | 0         | 0        | 1           | 0        | 2         | 0        | 0        | 0        | 0         | 0        | 0           | 6        | 0                |          |
| Others*                          | 21            | 0        | 0         | 0        | 7         | 0        | 2         | 0        | 2        | 0        | 4         | 0        | 0        | 0        | 4         | 1        | 4         | 0        | 4           | 0        | 1         | 0        | 4        | 0        | 0         | 2        | 0           | 55       | 1                |          |
| <b>Total:</b>                    | <b>88</b>     | <b>1</b> | <b>12</b> | <b>1</b> | <b>14</b> | <b>0</b> | <b>10</b> | <b>0</b> | <b>3</b> | <b>0</b> | <b>14</b> | <b>0</b> | <b>1</b> | <b>1</b> | <b>19</b> | <b>2</b> | <b>16</b> | <b>0</b> | <b>21</b>   | <b>0</b> | <b>16</b> | <b>0</b> | <b>5</b> | <b>0</b> | <b>3</b>  | <b>0</b> | <b>2</b>    | <b>0</b> | <b>224</b>       | <b>5</b> |

**\*Others include the following:**

***Radiologist, Microbiologist, Epidemiologist, Dispenser, Licensed Practical Nurse, Psychosocial worker, Hygienist, Logistician, Vaccinator, Ambulance Driver, Procurement Officer, Registrar, Accountant, Secretary, Hospital Administrator, Community Health Volunteer, GIS Specialist, EOC Coordinator***

# EPI-Curve of Confirmed Cases and Deaths

2036

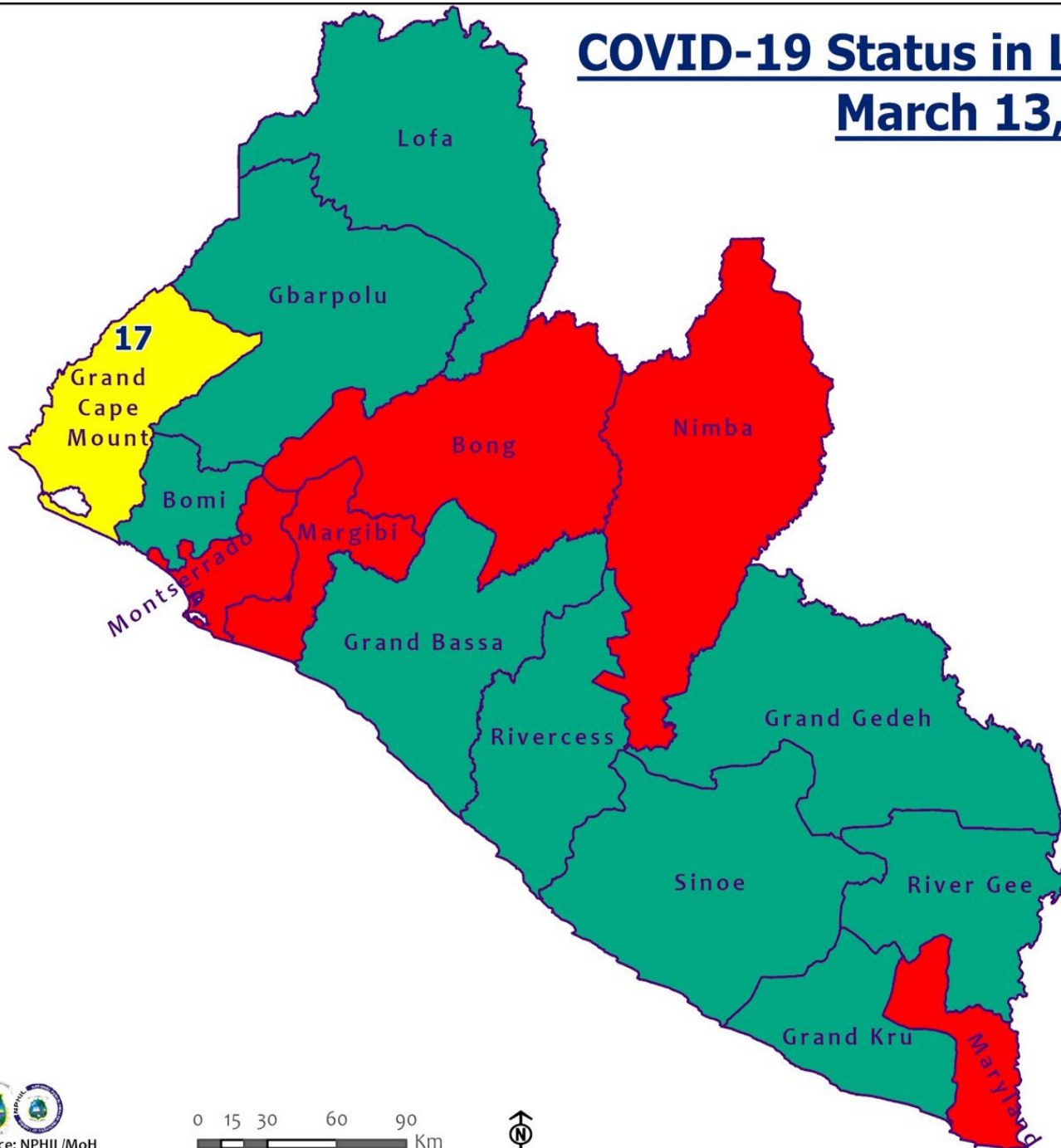


85

■ Daily Cases  
● Daily Deaths



# COVID-19 Status in Liberia by County March 13, 2021



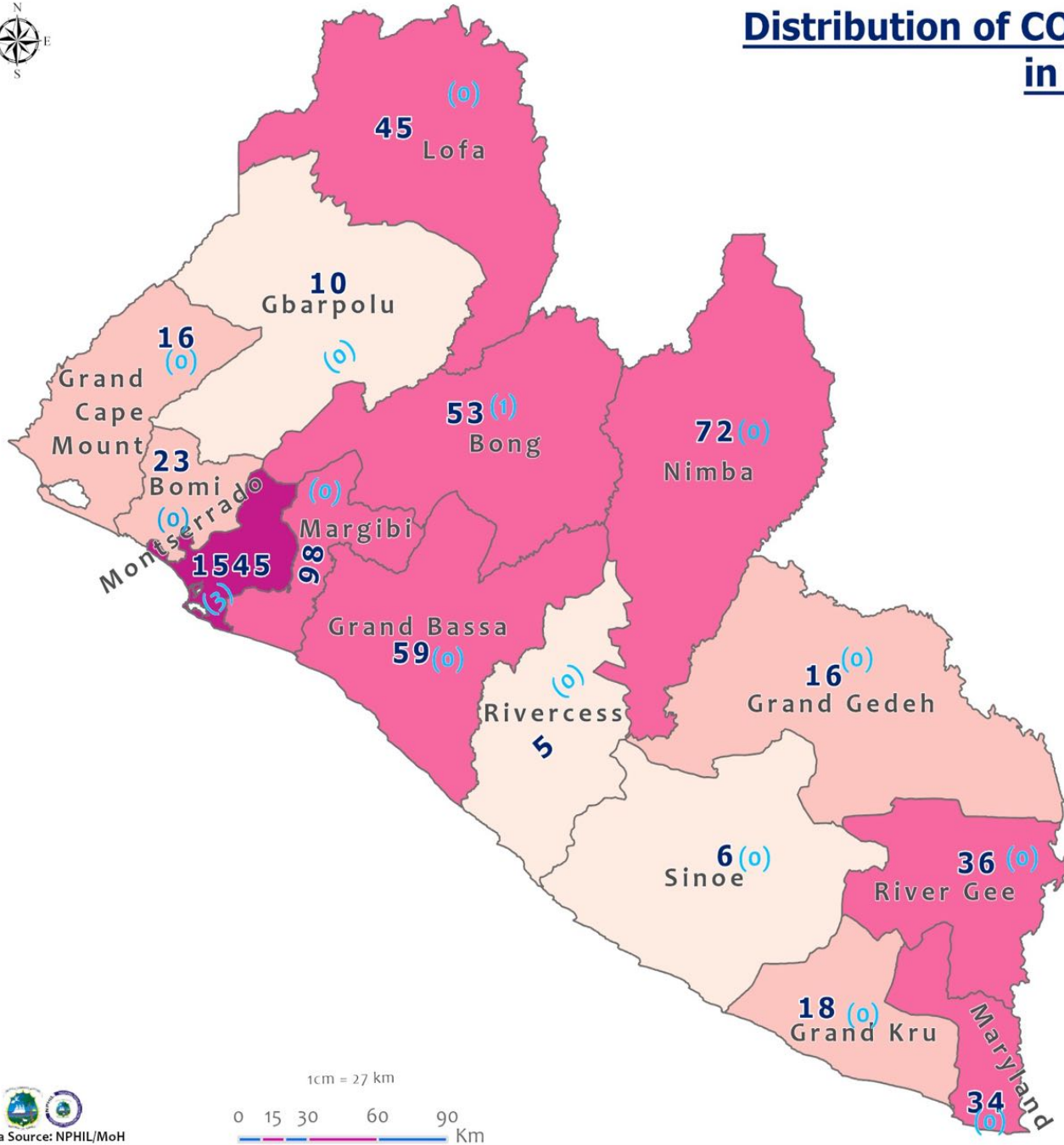
**Legend**

County Status

- Preparedness
- 28-Day Countdown
- Response



# Distribution of COVID-19 Cases by County in Liberia - March 13, 2021



Total cumulative cases:

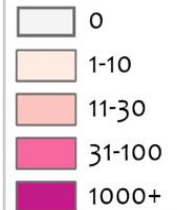
**2036**

Total new cases:

**4**

## Legend

Number of Cases



Cumulative cases

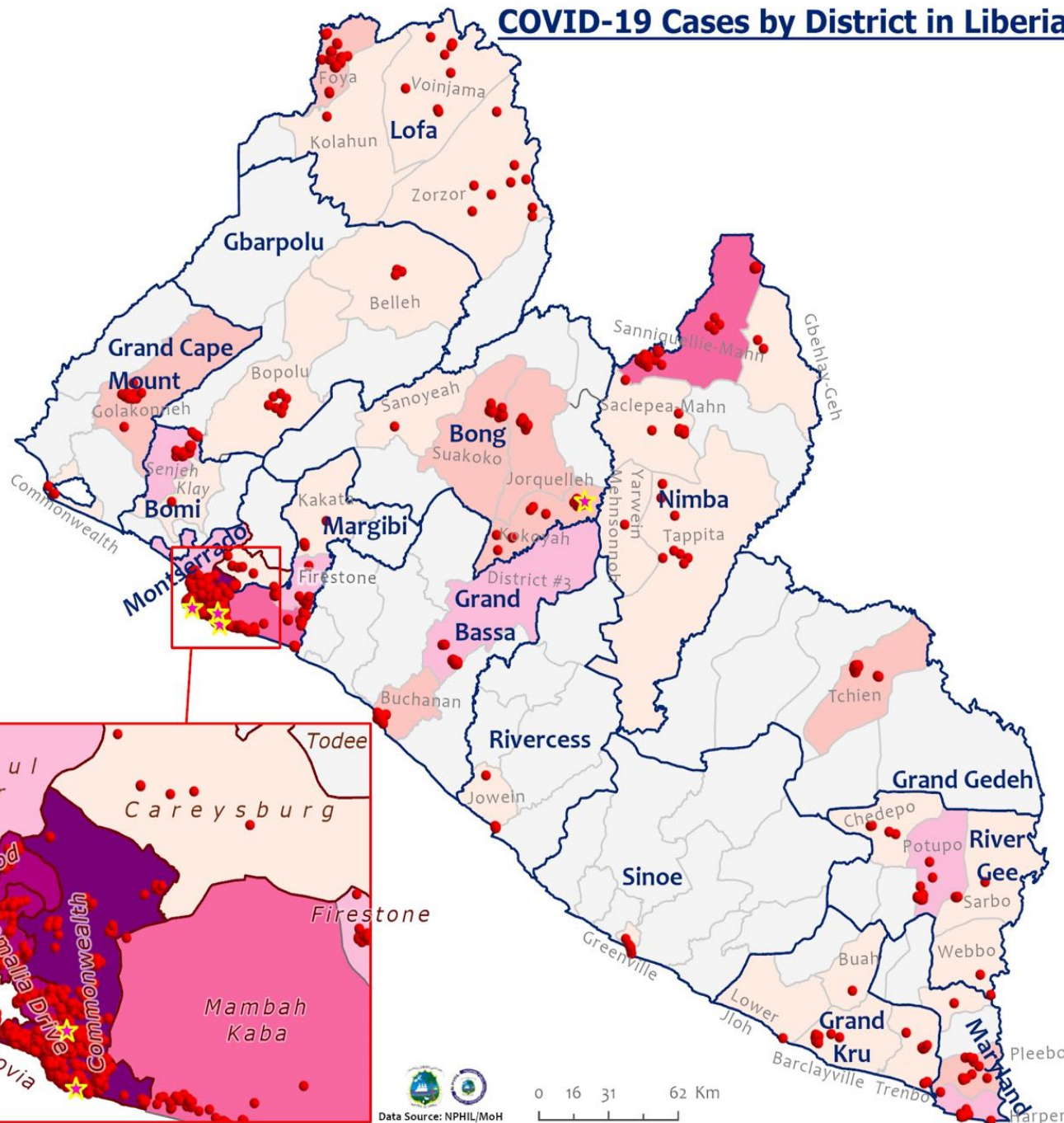
New cases

**0** (0)

1cm = 27 km



# COVID-19 Cases by District in Liberia - March 13, 2021



**Total Cases: 2036**

| Affected Counties | Cumulative Cases |
|-------------------|------------------|
| Montserrado       | 1545             |
| Margibi           | 98               |
| Nimba             | 72               |
| Grand Bassa       | 59               |
| Bong              | 53               |
| Lofa              | 45               |
| River Gee         | 36               |
| Maryland          | 34               |
| Bomi              | 23               |
| Grand Kru         | 18               |
| Grand Gedeh       | 16               |
| Grand Cape Mount  | 16               |
| Gbarpolu          | 10               |
| Sinoe             | 6                |
| Rivercess         | 5                |

## Legend

### Case Status

- New confirmed case
- Confirmed cases

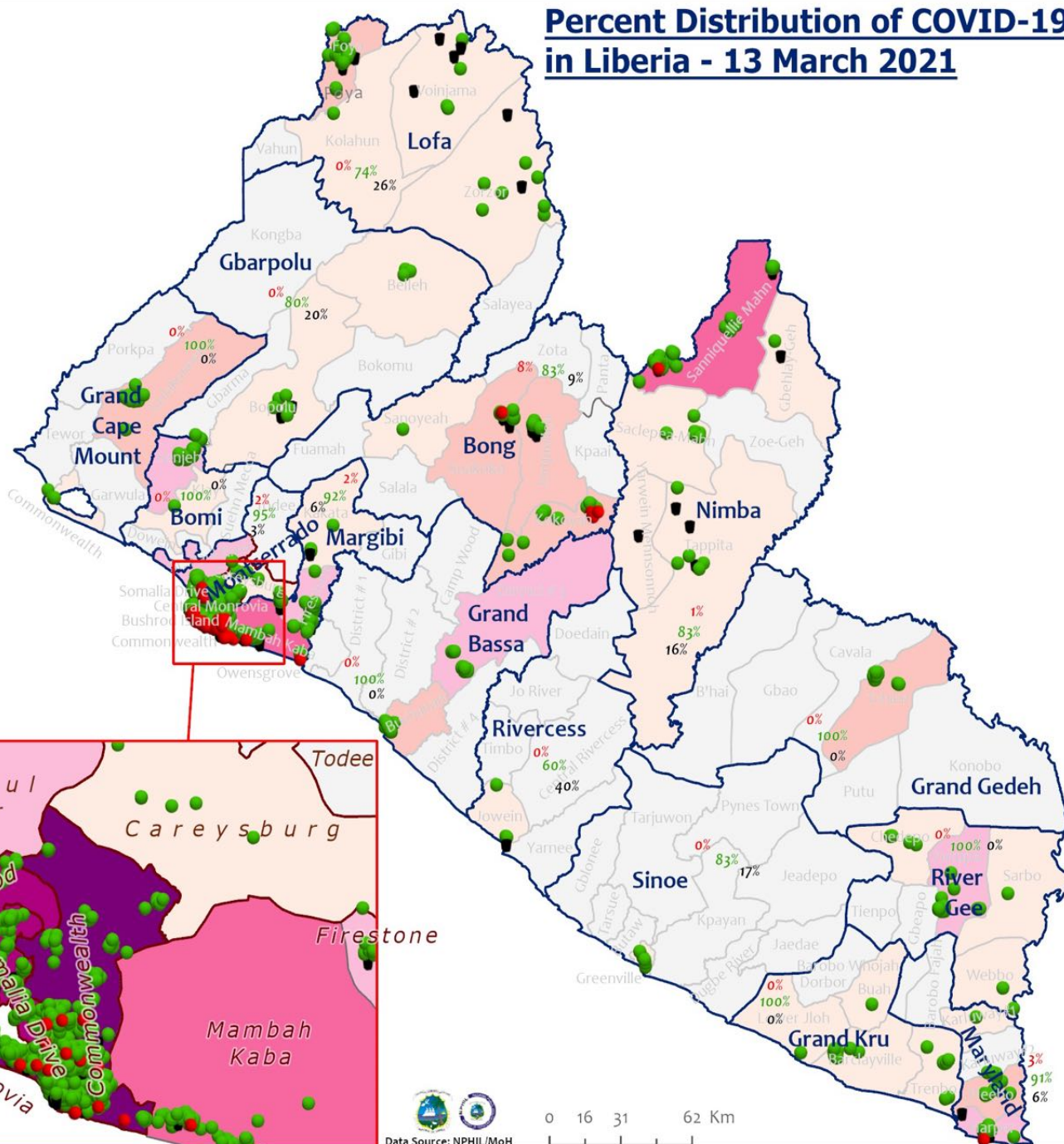
### Cases / District

- 0
- 1-10
- 11-20
- 21-50
- 51-100
- 101-200
- 201-600





# Percent Distribution of COVID-19 Cases by Status in Liberia - 13 March 2021



**Total Cases: 2036**

| Affected Counties | Cumulative Cases |
|-------------------|------------------|
| Montserrado       | 1545             |
| Margibi           | 98               |
| Nimba             | 72               |
| Grand Bassa       | 59               |
| Bong              | 53               |
| Lofa              | 45               |
| River Gee         | 36               |
| Maryland          | 34               |
| Bomi              | 23               |
| Grand Kru         | 18               |
| Grand Gedeh       | 16               |
| Grand Cape        | 16               |
| Gbarpolu          | 10               |
| Sinoe             | 6                |
| Rivercess         | 5                |

**Legend**

**Case Status**

- Active
- Recovered
- Dead

**Cases / District**

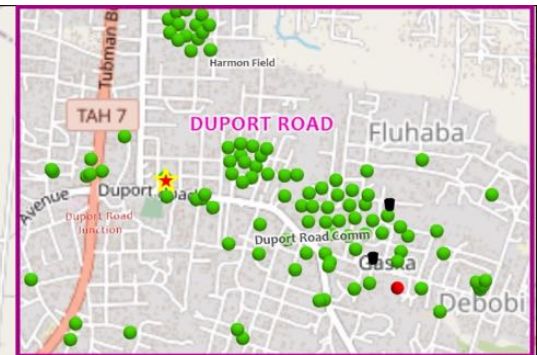
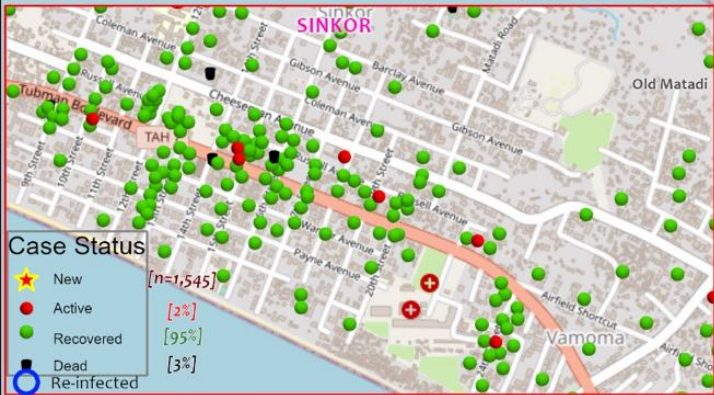
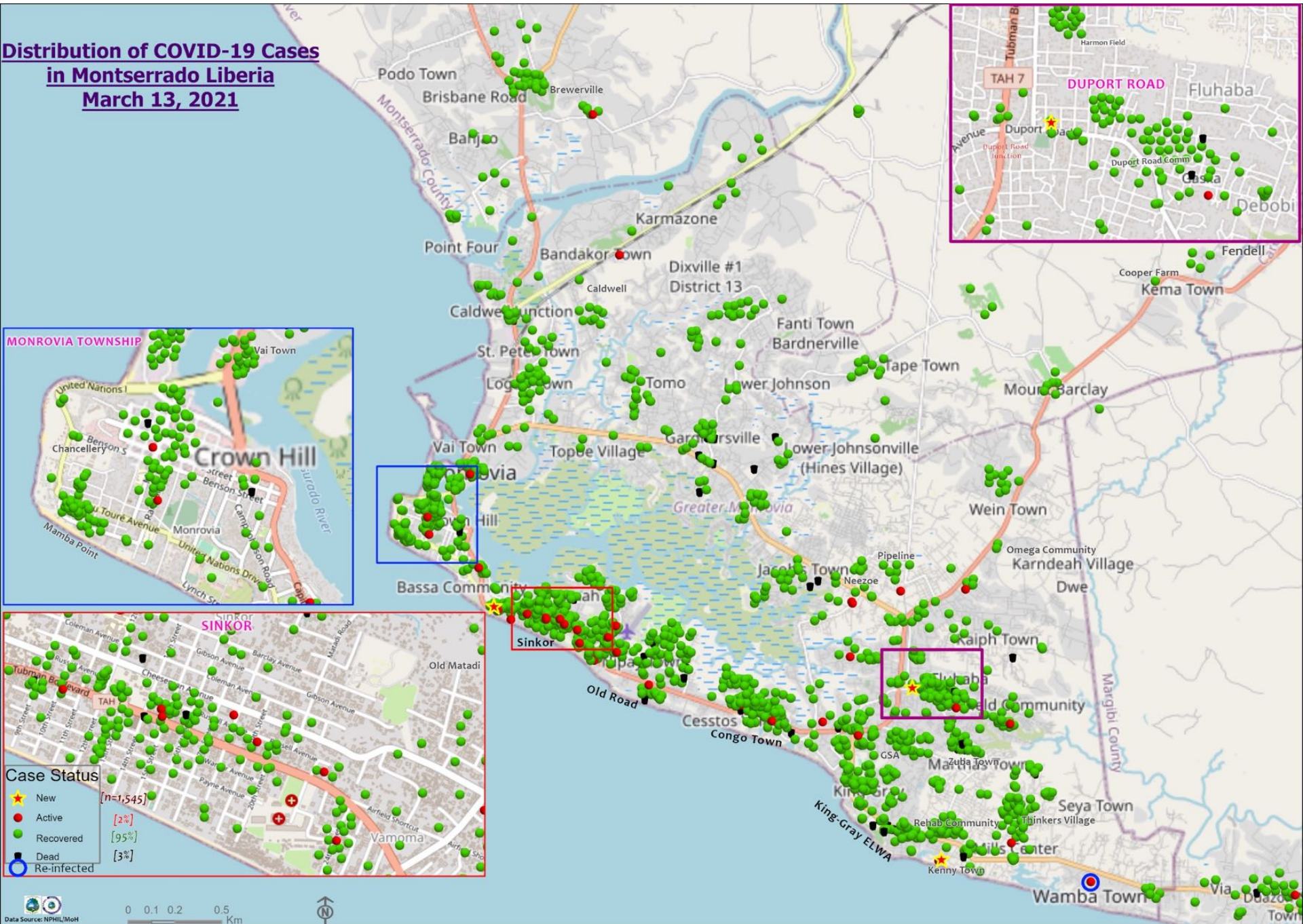
- 0
- 1-10
- 11-20
- 21-50
- 51-100
- 101-200
- 201-600

**Recovered Case Percentages**

- [2%]
- [94%]
- [4%]

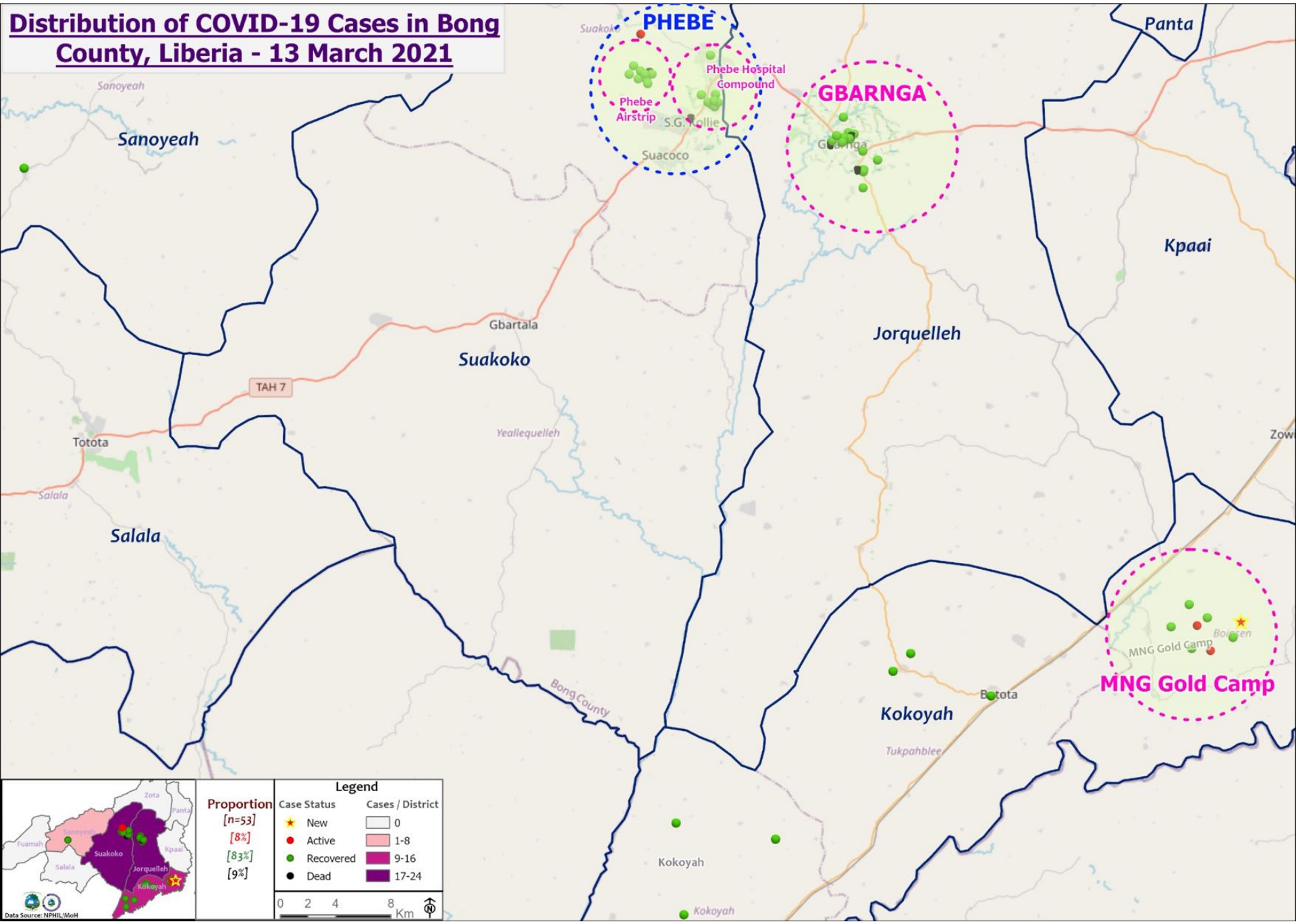


# Distribution of COVID-19 Cases in Montserratado Liberia March 13, 2021





# Distribution of COVID-19 Cases in Bong County, Liberia - 13 March 2021



| Proportion |  | Legend      |                  |
|------------|--|-------------|------------------|
| [n=53]     |  | Case Status | Cases / District |
| [8%]       |  | ★ New       | 0                |
| [83%]      |  | ● Active    | 1-8              |
| [9%]       |  | ● Recovered | 9-16             |
|            |  | ● Dead      | 17-24            |

0 2 4 8 Km

Data Source: NPHIL/MoH

# Summary of confirmed, recovered, active, and dead cases by reporting counties, Liberia, 16 March 2020 – 13 March 2021

| County           | Confirmed Cases |             | Recovered Cases |             | Active Cases | Dead Cases |           |
|------------------|-----------------|-------------|-----------------|-------------|--------------|------------|-----------|
|                  | New             | Cum         | New             | Cum         |              | New        | Cum       |
| Bomi             | 0               | 23          | 0               | 22          | 0            | 0          | 1         |
| Bong             | 1               | 53          | 0               | 43          | 4            | 0          | 5         |
| Gbarpolu         | 0               | 10          | 0               | 8           | 0            | 0          | 2         |
| Grand Bassa      | 0               | 59          | 0               | 59          | 0            | 0          | 0         |
| Grand Cape Mount | 0               | 16          | 0               | 16          | 0            | 0          | 0         |
| Grand Gedeh      | 0               | 16          | 0               | 16          | 0            | 0          | 0         |
| Grand Kru        | 0               | 18          | 0               | 18          | 0            | 0          | 0         |
| Lofa             | 0               | 45          | 0               | 34          | 0            | 0          | 11        |
| Margibi          | 0               | 98          | 0               | 90          | 2            | 0          | 6         |
| Maryland         | 0               | 34          | 0               | 31          | 1            | 0          | 2         |
| Montserrado      | 3               | 1545        | 0               | 1460        | 41           | 0          | 44        |
| Nimba            | 0               | 72          | 0               | 58          | 3            | 0          | 11        |
| Rivercess        | 0               | 5           | 0               | 3           | 0            | 0          | 2         |
| River Gee        | 0               | 36          | 0               | 36          | 0            | 0          | 0         |
| Sinoe            | 0               | 6           | 0               | 5           | 0            | 0          | 1         |
| <b>National</b>  | <b>4</b>        | <b>2036</b> | <b>0</b>        | <b>1899</b> | <b>51</b>    | <b>0</b>   | <b>85</b> |

# Daily Summary Report at Treatment Units – 13 March 2021

| Treatment Facility Name                        | New Admissions | Cumulative Admission | Daily Discharges | Cumulative Recoveries | Daily Deaths | Cumulative Deaths | Currently in treatment |
|--|----------------|----------------------|------------------|-----------------------|--------------|-------------------|------------------------|
| Bomi LGH Treatment Unit                        | 0              | 18                   | 0                | 18                    | 0            | 0                 | 0                      |
| Bong Treatment Unit                            | 0              | 26                   | 0                | 26                    | 0            | 0                 | 0                      |
| Chief Jallahlone Hospital Treatment Unit       | 0              | 1                    | 0                | 1                     | 0            | 0                 | 0                      |
| Grand Bassa Arcelor Mittal Treatment Unit      | 0              | 6                    | 0                | 6                     | 0            | 0                 | 0                      |
| Grand Bassa LGH Treatment Unit                 | 0              | 3                    | 0                | 3                     | 0            | 0                 | 0                      |
| LAC Treatment Unit                             | 0              | 42                   | 0                | 42                    | 0            | 0                 | 0                      |
| Starbase Treatment Unit                        | 0              | 643                  | 0                | 634                   | 0            | 9                 | 0                      |
| Union Treatment Center                         | 0              | 78                   | 0                | 78                    | 0            | 0                 | 0                      |
| Duside Hospital Treatment Unit                 | 0              | 42                   | 0                | 40                    | 0            | 2                 | 0                      |
| Martha Tubman Hospital Treatment Unit          | 0              | 13                   | 0                | 13                    | 0            | 0                 | 0                      |
| Rally Time Treatment Unit                      | 0              | 4                    | 0                | 4                     | 0            | 0                 | 0                      |
| Sasstown Treatment Unit                        | 0              | 7                    | 0                | 7                     | 0            | 0                 | 0                      |
| Behwan Treatment Unit                          | 0              | 7                    | 0                | 7                     | 0            | 0                 | 0                      |
| FJ Grante Hospital Treatment Unit              | 0              | 5                    | 0                | 5                     | 0            | 0                 | 0                      |
| JJ Dossen Hospital Treatment Unit              | 0              | 9                    | 0                | 9                     | 0            | 0                 | 0                      |
| Pleebo Health Center Treatment Unit            | 0              | 21                   | 0                | 21                    | 0            | 0                 | 0                      |
| Tellewoyan Memorial Hospital Treatment Unit    | 0              | 13                   | 0                | 13                    | 0            | 0                 | 0                      |
| Foya Borma Hospital Treatment Unit             | 0              | 12                   | 0                | 12                    | 0            | 0                 | 0                      |
| Zorzor Treatment Unit                          | 0              | 6                    | 0                | 6                     | 0            | 0                 | 0                      |
| Robert Sport Treatment Unit                    | 0              | 1                    | 0                | 1                     | 0            | 0                 | 0                      |
| Ganta United Methodist Hospital Treatment Unit | 0              | 1                    | 0                | 1                     | 0            | 0                 | 0                      |
| Arcelor Mittal Yekepa Treatment Unit           | 0              | 12                   | 0                | 12                    | 0            | 0                 | 0                      |
| Jackson F. Doe Treatment Unit                  | 0              | 5                    | 0                | 4                     | 0            | 1                 | 0                      |
| St. Frances Hospital Treatment Unit            | 0              | 2                    | 0                | 2                     | 0            | 0                 | 0                      |
| Fish Town Hospital Treatment Unit              | 0              | 36                   | 0                | 36                    | 0            | 0                 | 0                      |
| E&J Medical Center Treatment Unit              | 0              | 20                   | 0                | 19                    | 0            | 1                 | 0                      |
| <b>TOTAL</b>                                   | <b>0</b>       | <b>1033</b>          | <b>0</b>         | <b>1020</b>           | <b>0</b>     | <b>13</b>         | <b>0</b>               |



# Home-Base Care of COVID-19 Cases

| County        | New Admissions | Currently in Admissions | No. Followed-up (In-person/Phone) | Cumulative Admissions | New Recoveries | Cumulative Recoveries | Referrals to TU | Cumulative Referrals to TU | New Death | Cumulative Deaths |
|---------------|----------------|-------------------------|-----------------------------------|-----------------------|----------------|-----------------------|-----------------|----------------------------|-----------|-------------------|
| Montserratado | 1              | 11                      | 10                                | 196                   | 0              | 183                   | 0               | 5                          | 0         | 0                 |
| Nimba         |                |                         |                                   | 0                     |                |                       |                 |                            |           |                   |
| Margibi       |                |                         |                                   | 0                     |                |                       |                 |                            |           |                   |
| Bong          |                |                         |                                   | 0                     |                |                       |                 |                            |           |                   |
| <b>Total:</b> | 1              | 11                      | 10                                | 196                   | 0              | 183                   | 0               | 5                          | 0         | 0                 |

# Laboratory Samples Evaluated – 13 March 2021

| County            | Sample Evaluated | New Positive | Repeat Positive | Initial Negative | Repeat Test Negative | Pending Lab Result |
|-------------------|------------------|--------------|-----------------|------------------|----------------------|--------------------|
| Bong              | 9                | 1            | 0               | 8                | 0                    | 0                  |
| Grand Bassa       | 6                | 0            | 0               | 6                | 0                    | 0                  |
| Grand Cape Mount  | 12               | 0            | 0               | 12               | 0                    | 0                  |
| Lofa              | 2                | 0            | 0               | 2                | 0                    | 0                  |
| Margibi           | 29               | 0            | 0               | 29               | 0                    | 0                  |
| Montserrado       | 266              | 3            | 0               | 261              | 0                    | 2                  |
| Nimba             | 3                | 0            | 0               | 3                | 0                    | 0                  |
| Sinoe             | 1                | 0            | 0               | 1                | 0                    | 0                  |
| <b>TOTAL</b>      | <b>328</b>       | <b>4</b>     | <b>0</b>        | <b>322</b>       | <b>0</b>             | <b>2</b>           |
| <b> </b>          |                  |              |                 |                  |                      |                    |
| Outgoing Traveler | 235              | 3            | 0               | 230              | 0                    | 2                  |
| Incoming Traveler | 88               | 1            | 0               | 87               | 0                    | 0                  |
| Voluntary         | 5                | 0            | 0               | 5                | 0                    | 0                  |

# Summary of COVID-19 Daily PoE in Response Counties – 13 March 2021

| Date of travel | Type of PoE                 | Point of Entry Name | Type of conveyance      | # of Travelers Arrival | # of Travelers departure | # of travelers with elevated temp | Total Travelers screened |        | Total Passengers tested on Arrival | Total Foreign diplomat Exempted | # of Children under 5 years not tested | Passengers staying less than 5 days exempted | Total passports collected | Total # of Travelers | Cumulative Total |   |  |
|----------------|-----------------------------|---------------------|-------------------------|------------------------|--------------------------|-----------------------------------|--------------------------|--------|------------------------------------|---------------------------------|--|--|---------------------------|----------------------|------------------|---|--|
|                |                             |                     |                         |                        |                          |                                   | Male                     | Female |                                    |                                 |  |  |                           |                      |                  |   |  |
| 13-Mar         | Airport                     |                     | Air Morac               | 0                      | 0                        | 0                                 | 0                        | 0      | 0                                  | 0                               | 0                                      | 0  | 0                         | 0                    |                  |   |  |
|                |                             |                     | Brussels                | 0                      | 0                        | 0                                 | 0                        | 0      | 0                                  | 0                               | 0                                      | 0  | 0                         | 0                    | 0                |   |  |
|                |                             |                     | AWA                     | 0                      | 0                        | 0                                 | 0                        | 0      | 0                                  | 0                               | 0                                      | 0  | 0                         | 0                    | 0                |   |  |
|                |                             |                     | Air France              | 0                      | 41                       | 0                                 | 26                       | 15     | 0                                  | 2                               | 1                                      | 0  | 0                         | 0                    | 41               |   |  |
|                |                             |                     | Air Cote D'Ivoire       | 18                     | 27                       | 0                                 | 27                       | 18     | 18                                 | 0                               | 0                                      | 0  | 0                         | 2                    | 45               |   |  |
|                |                             |                     | DHL                     | 0                      | 0                        | 0                                 | 0                        | 0      | 0                                  | 0                               | 0                                      | 0  | 0                         | 0                    | 0                | 0 |  |
|                |                             |                     | Kenya                   | 26                     | 75                       | 0                                 | 59                       | 42     | 25                                 | 0                               | 1                                      | 0  | 0                         | 0                    | 101              |   |  |
|                |                             |                     | Asky                    | 86                     | 0                        | 0                                 | 56                       | 30     | 82                                 | 2                               | 1                                      | 1  | 2                         | 86                   |                  |   |  |
|                |                             |                     | Others (Special flight) | 0                      | 0                        | 0                                 | 0                        | 0      | 0                                  | 0                               | 0                                      | 0  | 0                         | 0                    | 0                |   |  |
|                | James Spriggs Payne Airport |                     | 4                       | 8                      | 0                        | 0                                 | 12                       | 0      | 0                                  | 0                               | 0                                      | 0  | 12                        |                      |                  |   |  |
|                | Land                        | Ganta Main          | Land                    | 29                     | 46                       | 0                                 | 26                       | 49     | 29                                 | 0                               | 0                                      | 0  | 0                         | 75                   |                  |   |  |
|                |                             | Yekepa              | Land                    | 5                      | 0                        | 0                                 | 1                        | 4      | 0                                  | 0                               | 0                                      | 0  | 0                         | 5                    |                  |   |  |
|                |                             | Loguatu             | Land                    | 7                      | 0                        | 0                                 | 3                        | 4      | 0                                  | 0                               | 0                                      | 0  | 0                         | 7                    |                  |   |  |
|                |                             | Bo Water Side       | Land                    | 28                     | 32                       | 0                                 | 26                       | 34     | 0                                  | 0                               | 0                                      | 0  | 0                         | 60                   |                  |   |  |
| Seaport        | Buchanan                    | Vessel              | 0                       | 0                      | 0                        | 0                                 | 0                        | 0      | 0                                  | 0                               | 0                                      | 0  | 0                         |                      |                  |   |  |
|                | Freeport of Monrovia        | Vessel              | 0                       | 0                      | 0                        | 0                                 | 0                        | 0      | 0                                  | 0                               | 0                                      | 0  | 0                         |                      |                  |   |  |
| <b>Total:</b>  |                             |                     |                         | 203                    | 229                      | 0                                 | 224                      | 208    | 154                                | 4                               | 3                                      | 1  | 4                         | 432                  | <b>432</b>       |   |  |

# Summary of COVID-19 Contact Tracing in Response Counties

| County           | New Contacts Line listed | Cumulative Contacts | No. of Health Care Workers as Contacts | Cumulative no. of Health Care Workers as contacts | Contacts became a case | Cumulative contacts that became a case | Contacts Completed 14 Days | Cumulative Contacts Completing 14 Days | Contacts Under Follow-up | Contacts lost to Follow-up |
|------------------|--------------------------|---------------------|--|---|------------------------|--|----------------------------|--|--------------------------|----------------------------|
| Montserrado      | 0                        | 5503                | 0                                      | 508   | 0                      | 189                                    | 0                          | 5411                                   | 13                       | 3                          |
| Margibi          | 0                        | 480                 | 0                                      | 125   | 0                      | 42                                     | 0                          | 470                                    | 25                       | 0                          |
| Grand Bassa      | 0                        | 457                 | 0                                      | 140   | 0                      | 51                                     | 0                          | 410                                    | 0                        | 0                          |
| Sinoe            | 0                        | 191                 | 0                                      | 30  | 0                      | 1                                      | 0                          | 191                                    | 0                        | 0                          |
| Lofa             | 0                        | 758                 | 0                                      | 103   | 0                      | 34                                     | 0                          | 726                                    | 0                        | 0                          |
| Nimba            | 0                        | 613                 | 0                                      | 53  | 0                      | 25                                     | 0                          | 550                                    | 0                        | 0                          |
| Bong             | 0                        | 302                 | 0                                      | 70  | 0                      | 28                                     | 0                          | 300                                    | 2                        | 0                          |
| Gbarpolu         | 0                        | 87                  | 0                                      | 13  | 0                      | 8                                      | 0                          | 87                                     | 0                        | 0                          |
| Grand Cape Mount | 0                        | 49                  | 0                                      | 3   | 0                      | 4                                      | 0                          | 51                                     | 0                        | 0                          |
| RiverGee         | 0                        | 123                 | 0                                      | 13  | 0                      | 30                                     | 0                          | 123                                    | 0                        | 0                          |
| Maryland         | 0                        | 208                 | 0                                      | 28  | 0                      | 19                                     | 0                          | 136                                    | 0                        | 0                          |
| Bomi             | 0                        | 180                 | 0                                      | 17  | 0                      | 15                                     | 0                          | 177                                    | 0                        | 0                          |
| Rivercess        | 0                        | 102                 | 0                                      | 55  | 0                      | 0                                      | 0                          | 88                                     | 0                        | 0                          |
| Grand Kru        | 0                        | 333                 | 0                                      | 131   | 0                      | 17                                     | 0                          | 330                                    | 0                        | 0                          |
| Grand Gedeh      | 0                        | 163                 | 0                                      | 49  | 0                      | 6                                      | 0                          | 125                                    | 0                        | 0                          |
| <b>National</b>  | <b>0</b>                 | <b>9549</b>         | <b>0</b>                               | <b>1338</b>                                       | <b>0</b>               | <b>469</b>                             | <b>0</b>                   | <b>9175</b>                            | <b>40</b>                | <b>3</b>                   |

**Thank you for Listening**