



Liberia COVID-19 Daily Sitrep 362 (12th March 2021)

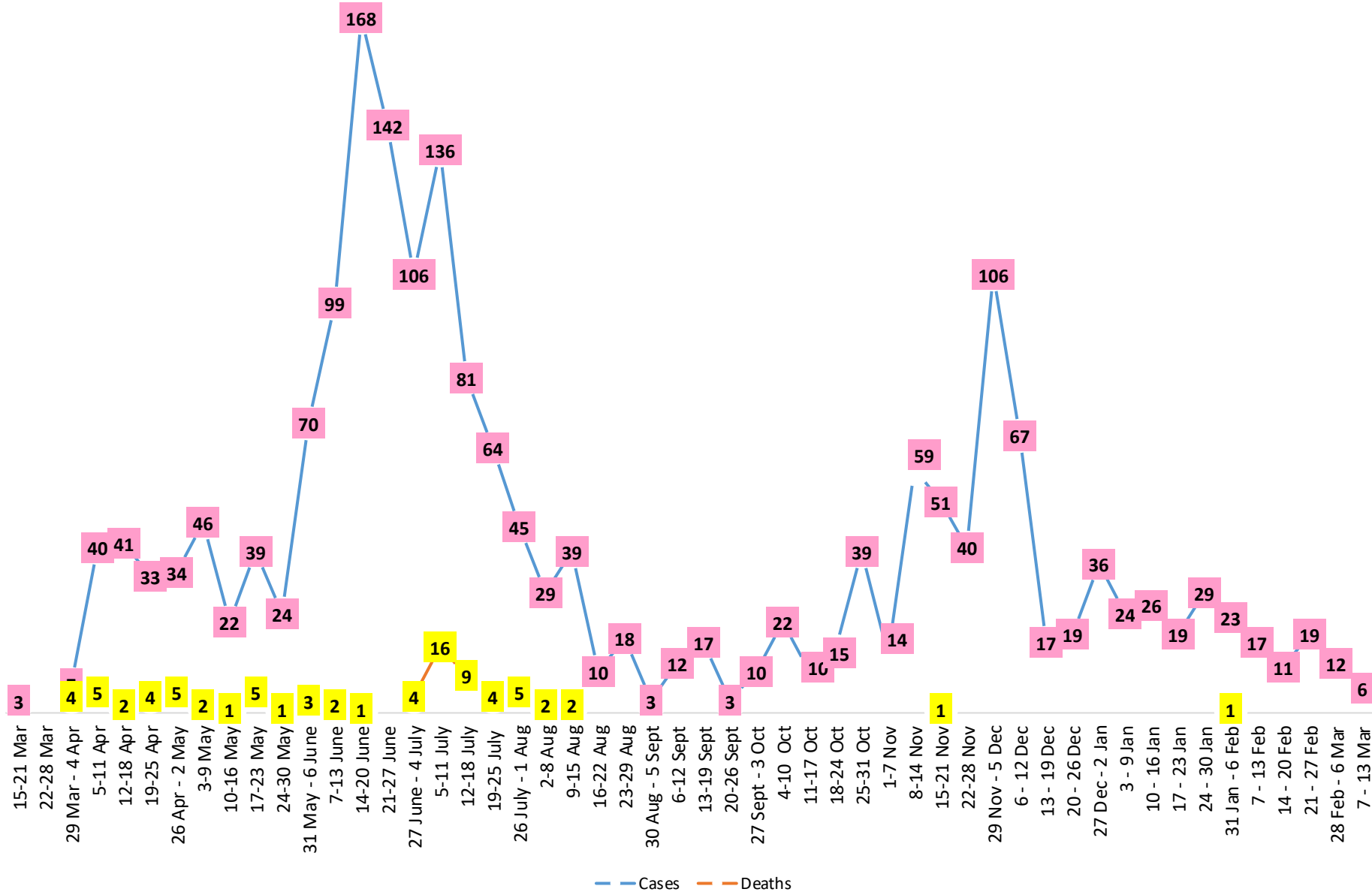
Summary of COVID-19 Cases by Reporting County, Liberia, 16 March 2020 – 12 March 2021

Bomi	0	0	23
Bong	1	0	52
Gbarpolu	0	0	10
Grand Bassa	0	0	59
Grand Cape Mount	0	0	16
Grand Kru	0	0	18
Grand Gedeh	0	0	16
Lofa	0	0	45
Margibi	0	0	98
Maryland	1	0	34
Montserrado	0	0	1542
Nimba	0	0	72
Rivercess	0	0	5
River Gee	0	0	36
Sinoe	0	0	6
NATIONAL	2	0	2032

Demographic Breakdown (Gender & Age) of Confirmed COVID-19 Cases (16 March 2020 – 12 March 2021)

County	<15 years		15 - 34		35 - 54		55+		All ages		Total Confirmed
	M	F	M	F	M	F	M	F	M	F	
Bomi	2	2	3	5	7	3	0	1	12	11	23
Bong	3	1	4	6	18	9	8	3	33	19	52
Gbarpolu	1	2	0	2	3	1	1	0	5	5	10
Grand Bassa	11	2	9	11	13	8	3	2	36	23	59
Grand Cape Mount	0	0	9	0	6	0	1	0	16	0	16
Grand Kru	0	0	2	5	4	5	2	0	8	10	18
Grand Gedeh	0	1	1	2	7	3	2	0	10	6	16
Lofa	3	3	8	3	13	5	8	2	32	13	45
Margibi	6	4	14	13	26	12	15	8	61	37	98
Maryland	2	0	10	6	9	4	1	2	22	12	34
Montserrado	53	49	363	213	439	189	166	70	1021	521	1542
Nimba	1	4	15	10	28	6	5	3	49	23	72
Rivercess	0	0	2	3	0	0	0	0	2	3	5
River Gee	0	0	4	3	19	5	5	0	28	8	36
Sinoe	0	0	1	0	4	1	0	0	5	1	6
National	82	68	445	282	596	251	217	91	1340	692	2032

COVID-19 WEEKLY EPI-CURVE



Summary of COVID-19 Deaths by Reporting County, Liberia, 16 March 2020 – 12 March 2021

County	aw Suspected Deaths	COVID-19 Treatment Unit	Total in COVID-19 Treatment Unit	Health Facility	Total in Health Facility	Community	Total in Community	Confirmed Deaths on Contact List	Cumulative Deaths
Bomi	0	0	0	0	1	0	0	0	1
Bong	0	0	0	0	4	0	1	0	5
Gbarpolu	0	0	0	0	2	0	0	0	2
Grand Bassa	0	0	0	0	0	0	0	0	0
Grand Cape Mount	0	0	0	0	0	0	0	0	0
Grand Gedeh	0	0	0	0	0	0	0	0	0
Grand Kru	0	0	0	0	0	0	0	0	0
Lofa	0	0	0	0	6	0	5	0	11
Maryland	0	0	0	0	2	0	0	0	2
Margibi	0	0	2	0	4	0	0	0	6
Montserrado	0	0	9	0	19	0	16	0	43
Nimba	0	0	2	0	5	0	4	0	11
Rivercess	0	0	0	0	1	0	1	0	2
River Gee	0	0	0	0	0	0	0	0	0
Sinoe	0	0	0	0	1	0	0	0	1
National	0	0	13	0	45	0	27	0	85

The Liberia Case Fatality rate (CFR) officially considered is for deaths that occurred among patients in care at the COVID-19 treatment units across the country. As of 30 December 2020 , a total of 13 deaths have been recorded CFR=1.3%. The country is however keeping active surveillance on community deaths and deaths in non COVID-19 treatment health units.

Daily and Cumulative Healthcare Worker (HCW) COVID-19 Cases and Deaths by County, Liberia, 16 March 2020 – 12 March 2021

County	DAILY REPORT						CUMULATIVE CASES (ALIVE & DEAD)	
	New Suspected & High Risk Cases (Alive)			New Suspect Death	Laboratory Confirmed Cases	Confirmed Cases on Contact List	Confirmed	Deaths
	Suspect	High Risk	Total					
Bomi	0	0	0	0	0	0	5	0
Bong	0	0	0	0	0	0	19	3
Gbarpolu	0	0	0	0	0	0	1	0
Grand Bassa	0	0	0	0	0	0	21	0
Grand Gedeh	0	0	0	0	0	0	2	0
Grand Kru	0	0	0	0	0	0	14	0
Lofa	0	0	0	0	0	0	16	0
Margibi	0	0	0	0	0	0	12	1
Maryland	0	0	0	0	0	0	16	0
Montserrado	0	0	0	0	0	0	88	1
Nimba	0	0	0	0	0	0	14	0
Rivercess	0	0	0	0	0	0	3	0
River Gee	0	0	0	0	0	0	10	0
Sinoe	0	0	0	0	0	0	3	0
NATIONAL	0	0	0	0	0	0	224	5

Cadre Cases and Deaths by Health Care Workers (16 March 2020 – 12 March 2021)

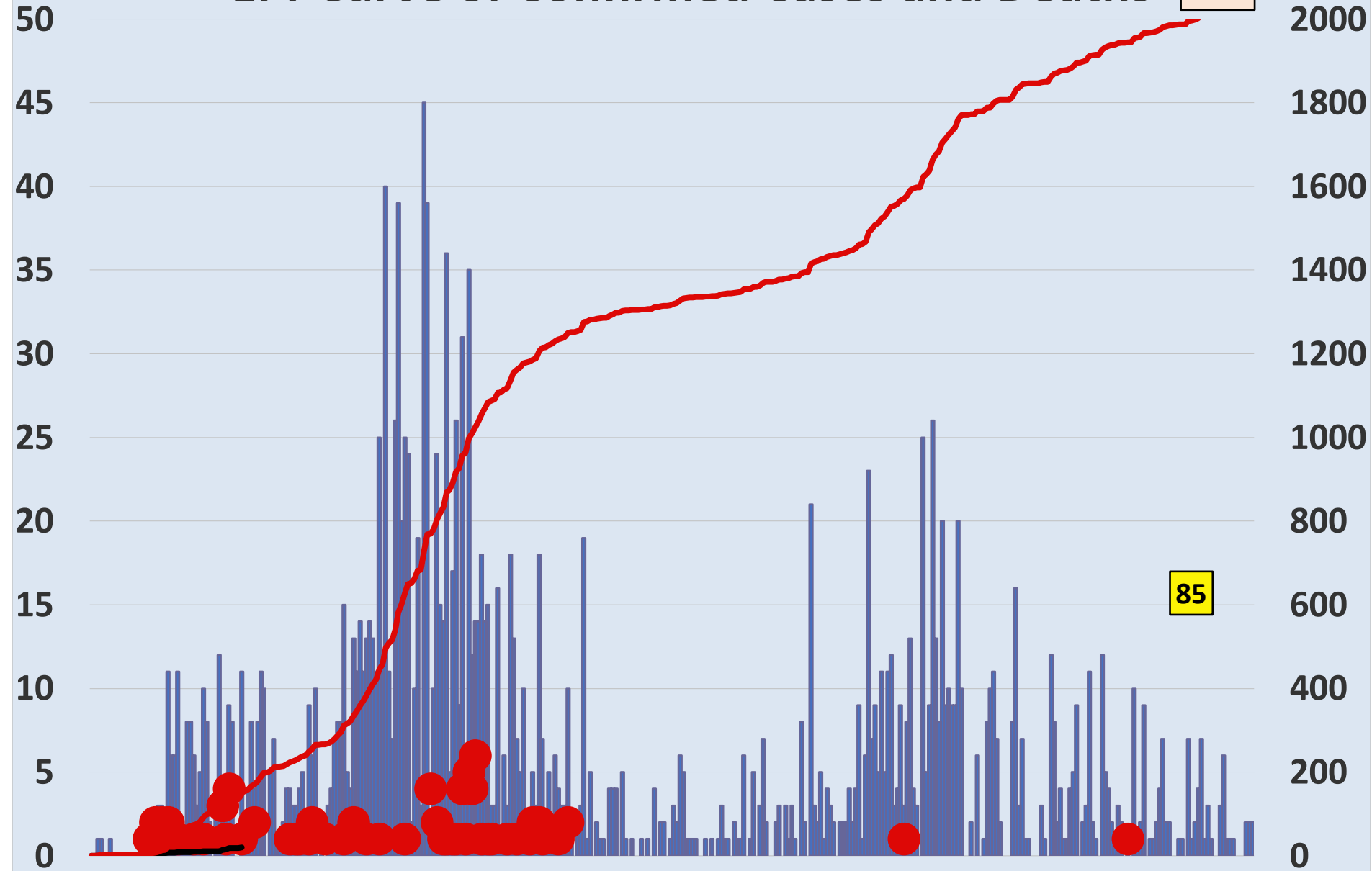
Health Care Worker Cadre	Montserratado		Margibi		Nimba		River Gee		Sinoe		Grand Kru		Gbarpolu		Bong		Lofa		Grand Bassa		Maryland		Bomi		Rivercess		Grand Gedeh		National (Total)	
	Cases	Deaths	Cases	Deaths	Cases	Deaths	Cases	Deaths	Cases	Deaths	Cases	Deaths	Cases	Deaths	Cases	Deaths	Cases	Deaths	Cases	Deaths	Cases	Deaths	Cases	Deaths	Cases	Deaths	Cases	Deaths	Cases	Deaths
Doctors	17	0	1	0	0	0	1	0	0	0	0	0	0	0	1	0	0	0	1	0	0	0	0	0	0	0	0	21	0	
Pharmacists	4	0	0	0	0	0	0	0	0	0	0	0	0	0	0	0	0	0	0	0	0	0	0	0	0	0	0	4	0	
Nurses	23	1	2	0	2	0	5	0	0	0	2	0	1	1	12	1	8	0	5	0	1	0	1	0	0	0	0	62	3	
Nurse Aid	0	0	0	0	2	0	0	0	0	0	4	0	0	0	0	0	0	8	0	2	0	0	0	0	0	0	0	16	0	
Midwife	0	0	0	0	0	0	1	0	0	0	1	0	0	0	1	0	1	0	1	0	0	0	0	0	0	0	0	5	0	
Physician Assistants	8	0	1	0	1	0	1	0	0	0	1	0	0	0	0	0	1	0	1	0	0	0	0	0	0	0	0	14	0	
Lab Technician	9	0	1	0	2	0	0	0	1	0	1	0	0	0	0	2	0	0	0	0	10	0	0	0	3	0	0	29	0	
Environmental Health Technicians	5	0	0	0	0	0	0	0	0	0	0	0	0	0	0	0	0	0	0	0	0	0	0	0	0	0	0	5	0	
Dieticians	0	0	7	1	0	0	0	0	0	0	0	0	0	0	0	0	0	0	0	0	0	0	0	0	0	0	0	7	1	
Hospital Cleaner	1	0	0	0	0	0	0	0	0	0	1	0	0	0	1	0	0	0	1	0	2	0	0	0	0	0	0	6	0	
Others*	21	0	0	0	7	0	2	0	2	0	4	0	0	0	4	1	4	0	4	0	1	0	4	0	0	2	0	55	1	
Total:	88	1	12	1	14	0	10	0	3	0	14	0	1	1	19	2	16	0	21	0	16	0	5	0	3	0	2	0	224	5

***Others include the following:**

Radiologist, Microbiologist, Epidemiologist, Dispenser, Licensed Practical Nurse, Psychosocial worker, Hygienist, Logistician, Vaccinator, Ambulance Driver, Procurement Officer, Registrar, Accountant, Secretary, Hospital Administrator, Community Health Volunteer, GIS Specialist, EOC Coordinator

EPI-Curve of Confirmed Cases and Deaths

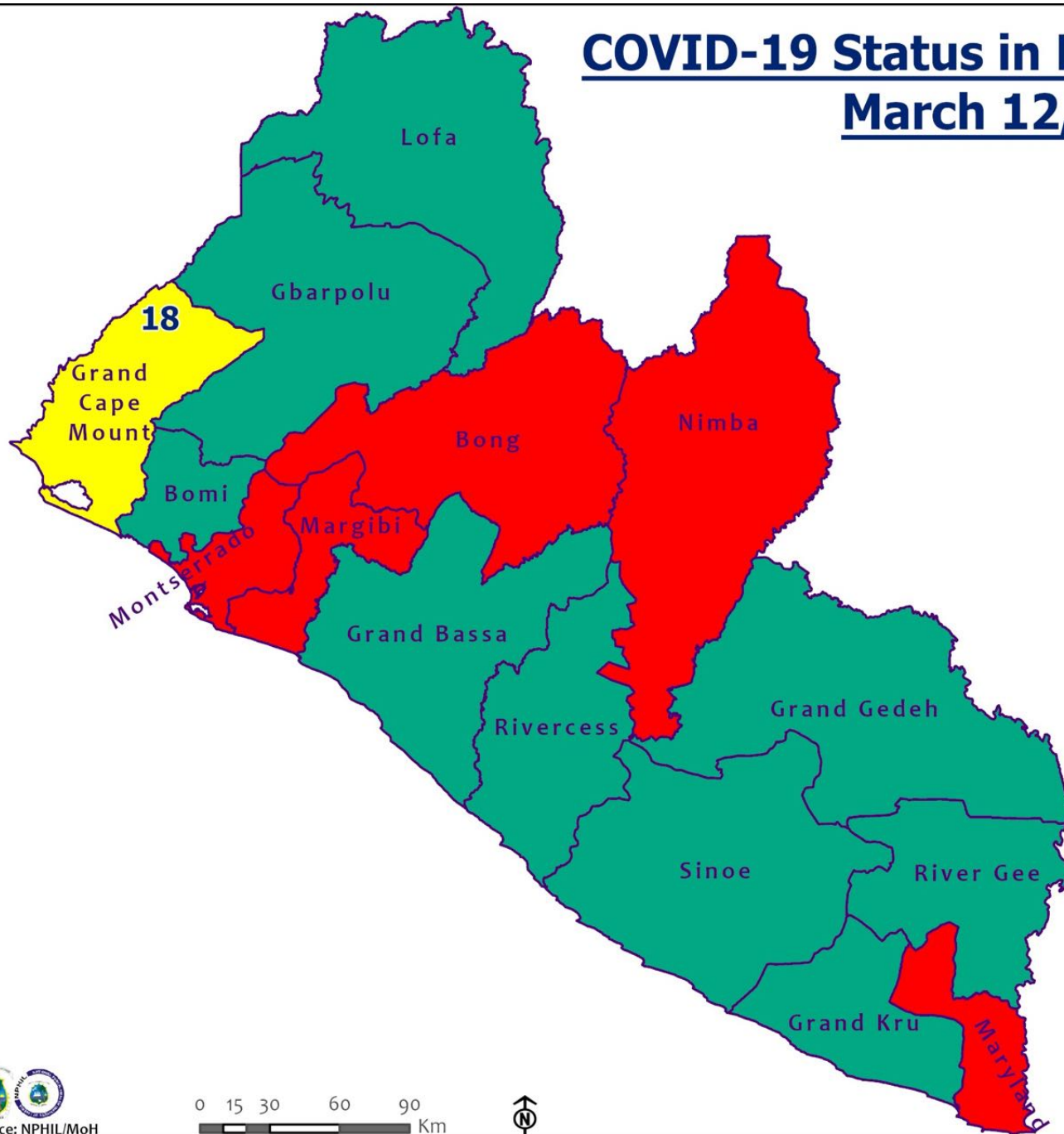
2032



85

■ Daily Cases
● Daily Deaths

COVID-19 Status in Liberia by County March 12, 2021



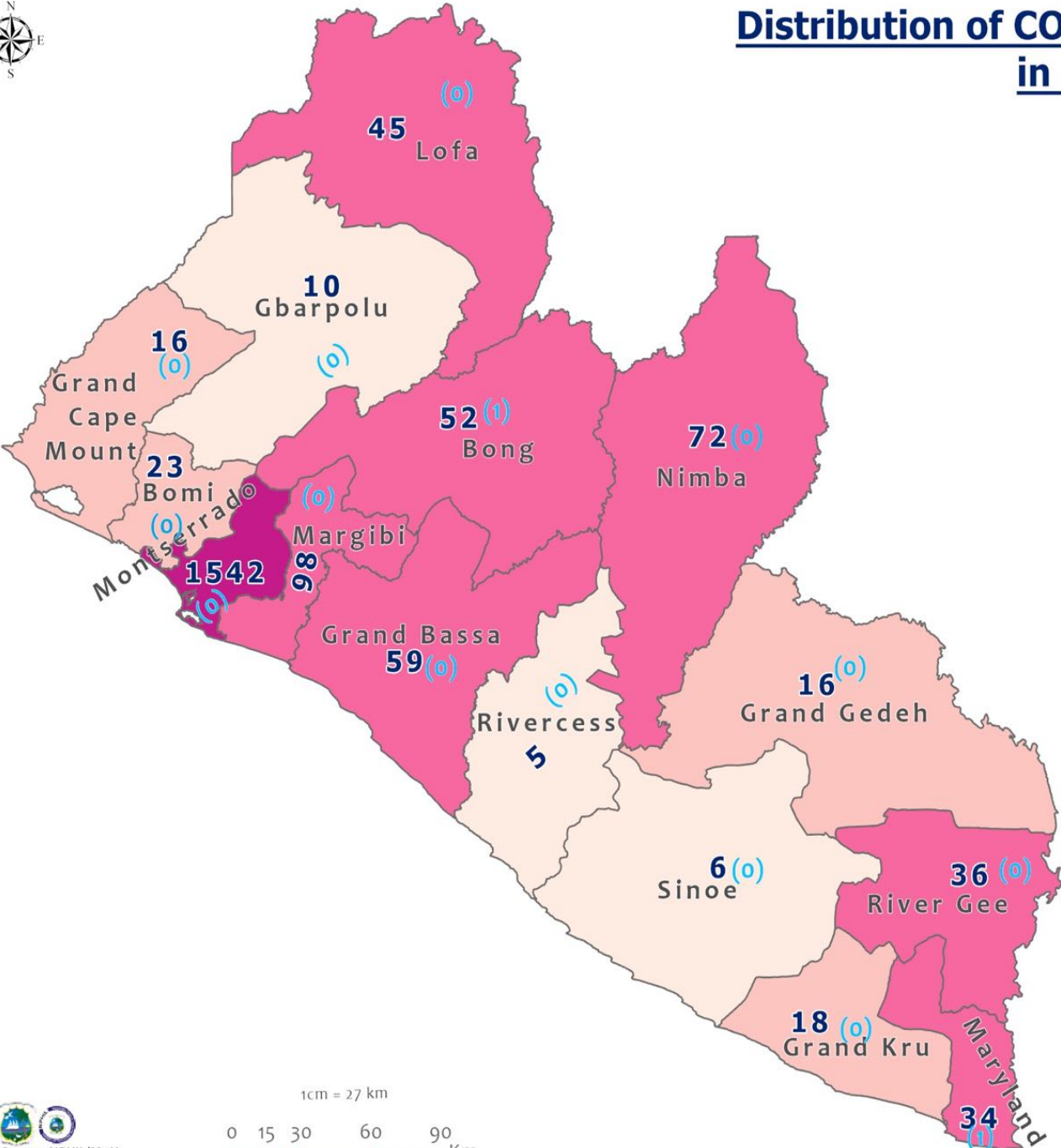
Legend

County Status

- Preparedness
- 28-Day Countdown
- Response



Distribution of COVID-19 Cases by County in Liberia - March 12, 2021



Total cumulative cases:

2032

Total new cases:

2

Legend

Number of Cases

- 0
- 1-10
- 11-30
- 31-100
- 1000+

Cumulative cases

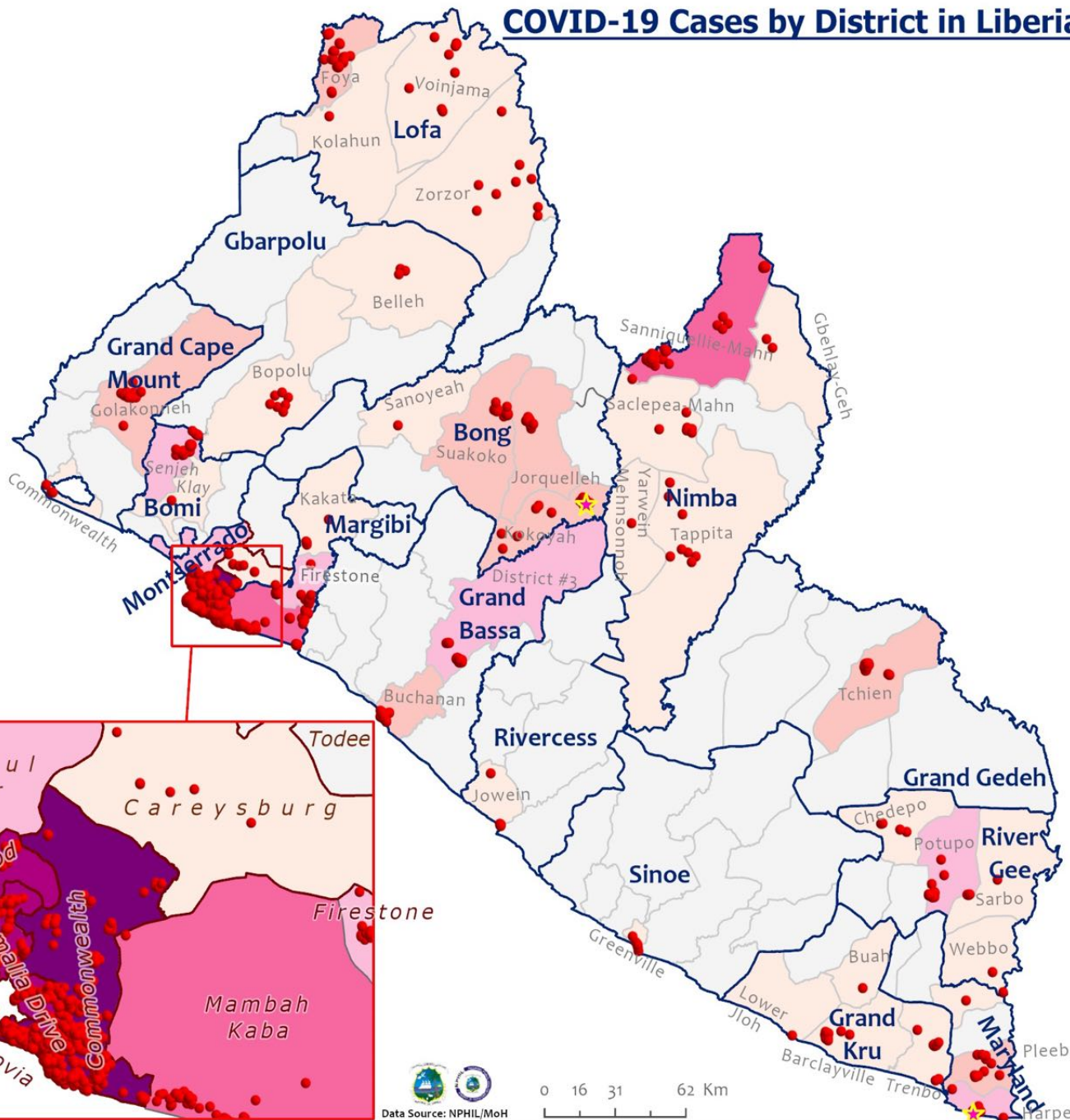
New cases

0 (o)

1cm = 27 km



COVID-19 Cases by District in Liberia - March 12, 2021



Total Cases: 2032

Affected Counties	Cumulative Cases
Montserrado	1542
Margibi	98
Nimba	72
Grand Bassa	59
Bong	52
Lofa	45
River Gee	36
Maryland	34
Bomi	23
Grand Kru	18
Grand Gedeh	16
Grand Cape Mount	16
Gbarpolu	10
Sinoe	6
Rivercess	5

Legend

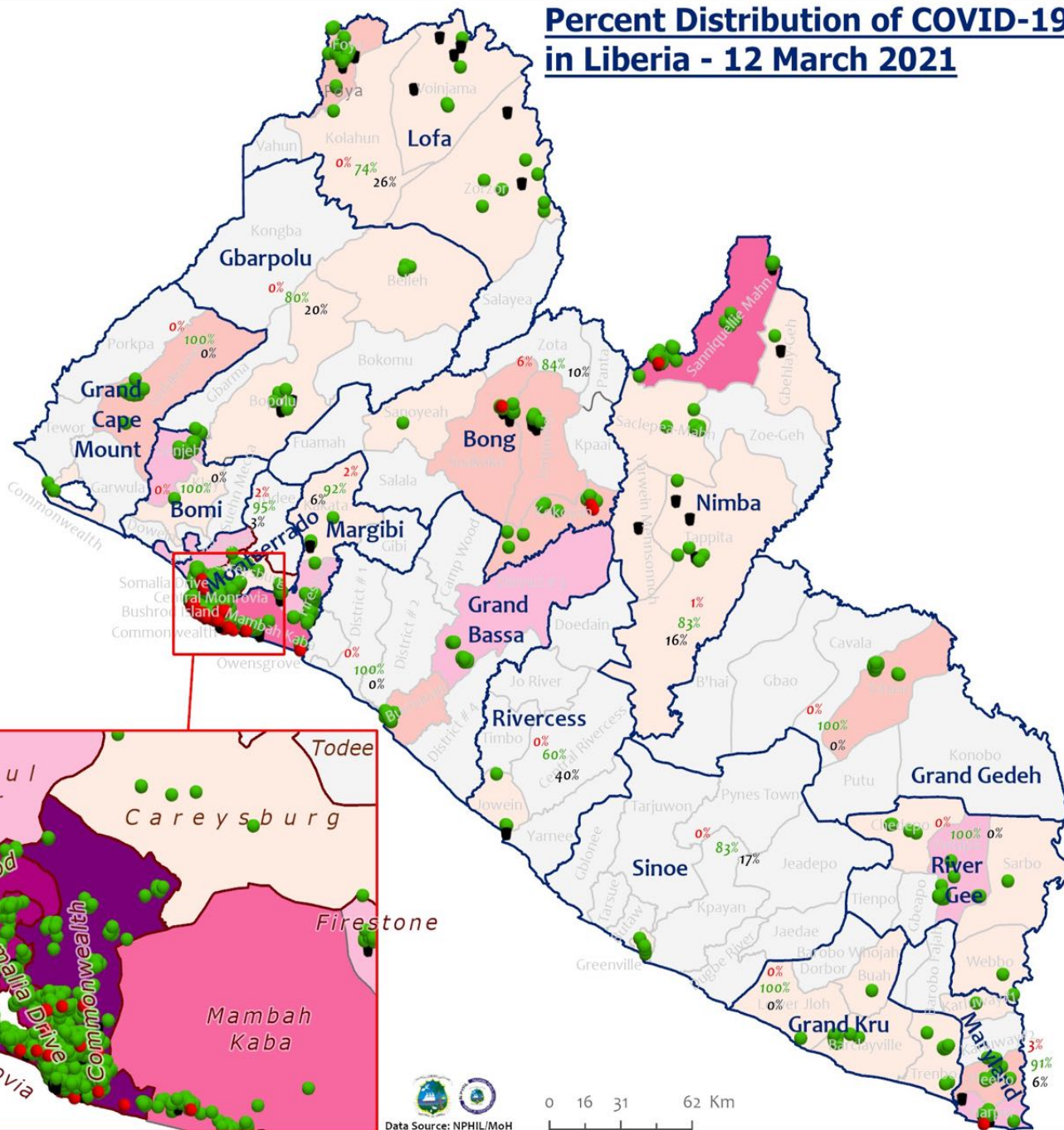
Case Status

- ★ New confirmed case
- Confirmed cases

Cases / District

- 0
- 1-10
- 11-20
- 21-50
- 51-100
- 101-200
- 201-600

Percent Distribution of COVID-19 Cases by Status in Liberia - 12 March 2021



Total Cases: 2032

Affected Counties	Cumulative Cases
Montserrado	1542
Margibi	98
Nimba	72
Grand Bassa	59
Bong	52
Lofa	45
River Gee	36
Maryland	34
Bomi	23
Grand Kru	18
Grand Gedeh	16
Grand Cape Mount	16
Gbarpolu	10
Sinoe	6
Rivercess	5

Legend

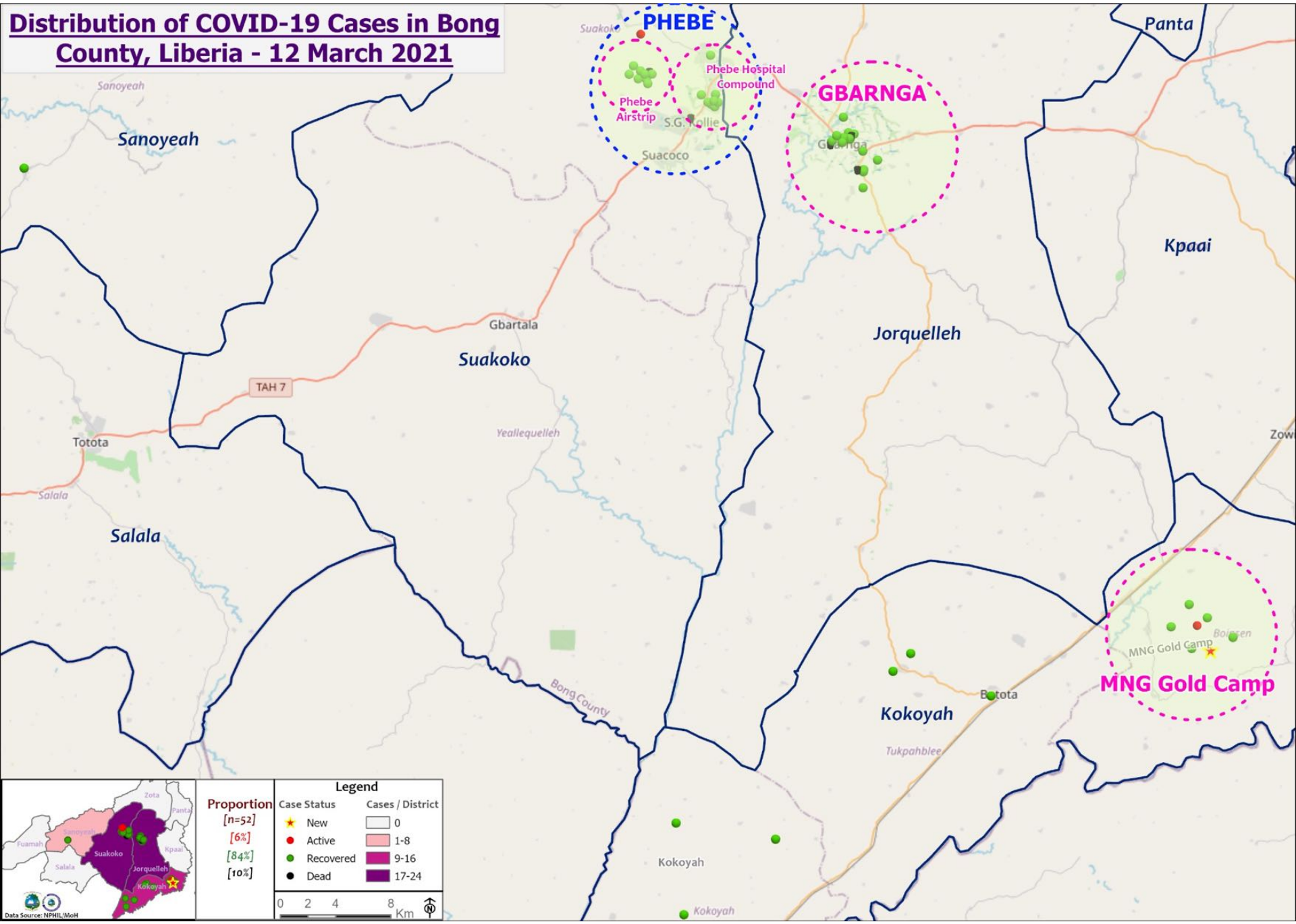
Case Status

- Active [2%]
- Recovered [94%]
- Dead [4%]

Cases / District

- 0
- 1-10
- 11-20
- 21-50
- 51-100
- 101-200
- 201-600

Distribution of COVID-19 Cases in Bong County, Liberia - 12 March 2021



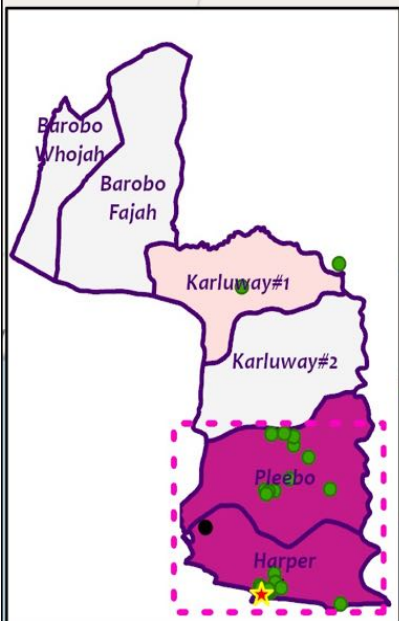
Proportion		Legend	
[n=52]		Case Status	Cases / District
[6%]		★ New	0
[84%]		● Active	1-8
[10%]		● Recovered	9-16
		● Dead	17-24

0 2 4 8 Km



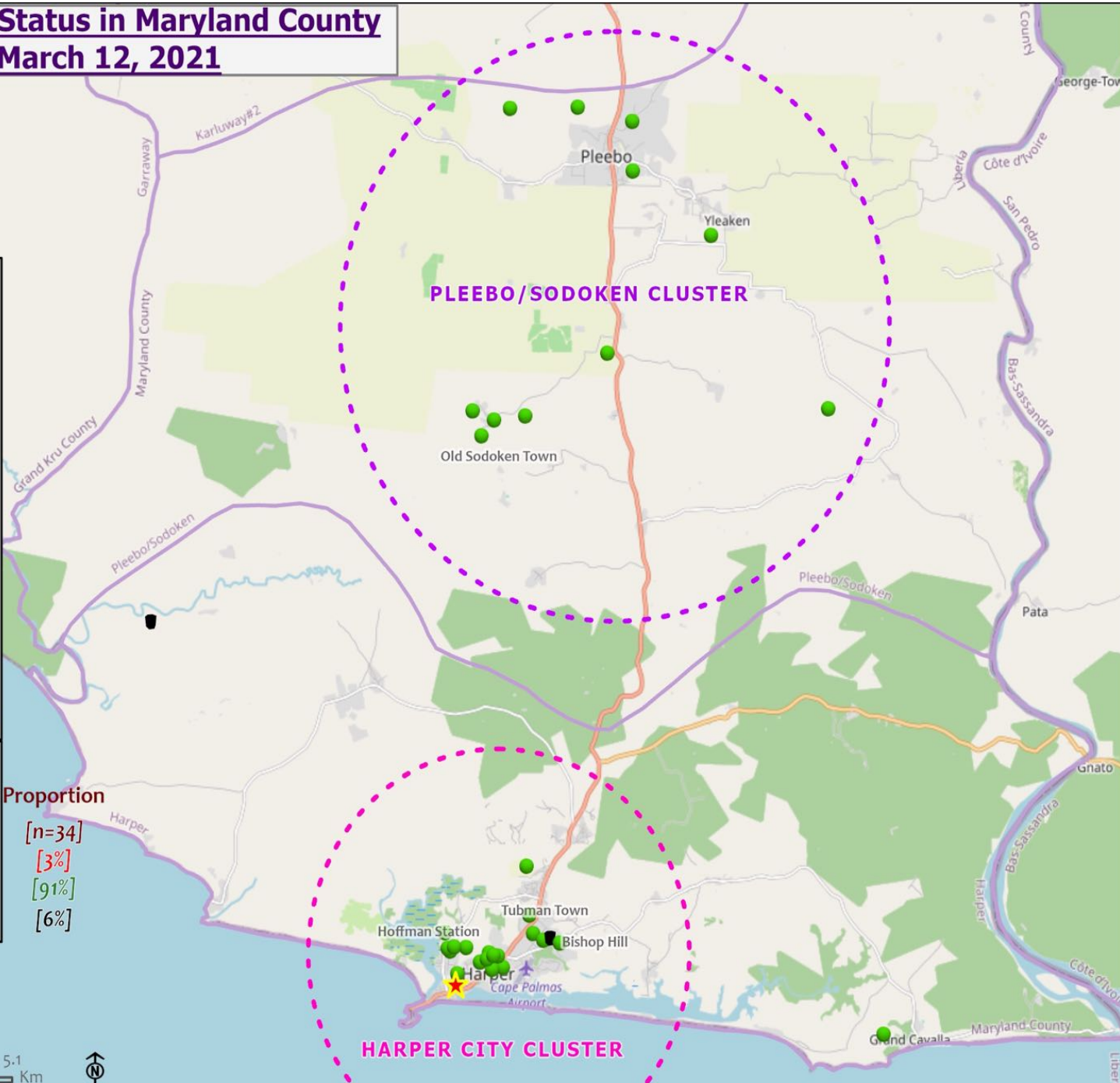
Data Source: NPHIL/MoH

COVID-19 Clusters/Status in Maryland County Liberia - March 12, 2021



Legend

Cases Status	Cases / District	Proportion
★ New	0	[n=34]
● Active	1	[3%]
● Recovered	2-10	[91%]
● Dead	11-25	[6%]



Summary of confirmed, recovered, active, and dead cases by reporting counties, Liberia, 16 March 2020 – 12 March 2021

County	Confirmed Cases		Recovered Cases		Active Cases	Dead Cases	
	New	Cum	New	Cum		New	Cum
Bomi	0	23	0	22	0	0	1
Bong	1	52	0	43	3	0	5
Gbarpolu	0	10	0	8	0	0	2
Grand Bassa	0	59	0	59	0	0	0
Grand Cape Mount	0	16	0	16	0	0	0
Grand Gedeh	0	16	0	16	0	0	0
Grand Kru	0	18	0	18	0	0	0
Lofa	0	45	0	34	0	0	11
Margibi	0	98	0	90	2	0	6
Maryland	1	34	0	31	1	0	2
Montserrado	0	1542	0	1460	38	0	44
Nimba	0	72	0	58	3	0	11
Rivercess	0	5	0	3	0	0	2
River Gee	0	36	0	36	0	0	0
Sinoe	0	6	0	5	0	0	1
National	2	2032	0	1899	47	0	85

Daily Summary Report at Treatment Units – 12 March 2021

Treatment Facility Name	New Admissions	Cumulative Admission	Daily Discharges	Cumulative Recoveries	Daily Deaths	Cumulative Deaths	Currently in treatment
Bomi LGH Treatment Unit	0	18	0	18	0	0	0
Bong Treatment Unit	0	26	0	26	0	0	0
Chief Jallahlone Hospital Treatment Unit	0	1	0	1	0	0	0
Grand Bassa Arcelor Mittal Treatment Unit	0	6	0	6	0	0	0
Grand Bassa LGH Treatment Unit	0	3	0	3	0	0	0
LAC Treatment Unit	0	42	0	42	0	0	0
Starbase Treatment Unit	0	643	0	634	0	9	0
Union Treatment Center	0	78	0	78	0	0	0
Duside Hospital Treatment Unit	0	42	0	40	0	2	0
Martha Tubman Hospital Treatment Unit	0	13	0	13	0	0	0
Rally Time Treatment Unit	0	4	0	4	0	0	0
Sasstown Treatment Unit	0	7	0	7	0	0	0
Behwan Treatment Unit	0	7	0	7	0	0	0
FJ Grante Hospital Treatment Unit	0	5	0	5	0	0	0
JJ Dossen Hospital Treatment Unit	0	9	0	9	0	0	0
Pleebo Health Center Treatment Unit	0	21	0	21	0	0	0
Tellewoyan Memorial Hospital Treatment Unit	0	13	0	13	0	0	0
Foya Borma Hospital Treatment Unit	0	12	0	12	0	0	0
Zorzor Treatment Unit	0	6	0	6	0	0	0
Robert Sport Treatment Unit	0	1	0	1	0	0	0
Ganta United Methodist Hospital Treatment Unit	0	1	0	1	0	0	0
Arcelor Mittal Yekepa Treatment Unit	0	12	0	12	0	0	0
Jackson F. Doe Treatment Unit	0	5	0	4	0	1	0
St. Frances Hospital Treatment Unit	0	2	0	2	0	0	0
Fish Town Hospital Treatment Unit	0	36	0	36	0	0	0
E&J Medical Center Treatment Unit	0	20	0	19	0	1	0
TOTAL	0	1033	0	1020	0	13	0

Laboratory Samples Evaluated – 12 March 2021

County	Sample Evaluated	New Positive	Repeat Positive	Initial Negative	Repeat Test Negative	Pending Lab Result
Bong	6	1	0	4	0	1
Grand Bassa	13	0	0	13	0	0
Grand Cape Mount	5	0	0	5	0	0
Lofa	1	0	0	1	0	0
Margibi	18	0	0	15	0	3
Maryland	1	1	0	0	0	0
Montserrado	212	0	0	200	0	12
Sinoe	2	0	0	2	0	0
TOTAL	258	2	0	240	0	16
Outgoing Traveler	103	0	0	103	0	0
Incoming Traveler	153	0	0	137	0	16
Voluntary	2	2	0	0	0	0

Summary of COVID-19 Daily PoE in Response Counties – 12 March 2021

Date of travel	Type of PoE	Point of Entry Name	Type of conveyance	# of Travelers Arrival	# of Travelers departure	# of travelers with elevated temp	Total Travelers screened		Total Passengers tested on Arrival	Total Foreign diplomat Exempted	# of Children under 5 years not tested	Passengers staying less than 5 days exempted	Total passports collected	Total # of Travelers	Cumulative Total
							Male	Female							
12-Mar	Airport	Air Morac		0	0	0	0	0	0	0	0	0	0	0	
		Brussels		80	73	0	78	75	78	0	2	0	0	153	
		AWA		18	18	0	25	11	17	0	1	0	0	36	
		Air France		29	25	0	35	19	28	1	1	1	0	54	
		Air Cote D'Ivoire		0	0	0	0	0	0	0	0	0	0	0	
		DHL		0	0	0	0	0	0	0	0	0	0	0	
		Kenya		0	0	0	0	0	0	0	0	0	0	0	
		Asky		0	0	0	0	0	0	0	0	0	0	0	
		Others (Special flight)		0	0	0	0	0	0	0	0	0	0	0	
	James Spriggs Payne Airport		0	0	0	0	0	0	0	0	0	0	0		
	Land	Ganta Main	Land	29	46	0	26	49	29	0	0	0	0	75	
		Yekepa	Land	0	0	0	0	0	0	0	0	0	0	0	
		Loguatu	Land	0	0	0	0	0	0	0	0	0	0	0	
		Bo Water Side	Land	28	32	0	26	34	0	0	0	0	0	60	
Seaport	Buchanan	Vessel	19	19	0	38	0	0	0	0	0	0	38		
	Freeport of Monrovia	Vessel	16	16	0	16	16	16	0	0	0	0	32		
Total:				219	229	0	244	204	168	1	4	1	0	448	448

Summary of COVID-19 Contact Tracing in Response Counties

County	New Contacts Line listed	Cumulative Contacts	No. of Health Care Workers as Contacts	Cumulative no. of Health Care Workers as contacts	Contacts became a case	Cumulative contacts that became a case	Contacts Completed 14 Days	Cumulative Contacts Completing 14 Days	Contacts Under Follow-up	Contacts lost to Follow-up
Montserratado	2	5503	0	508	0	189	0	5411	13	3
Margibi	0	480	0	125	0	42	0	470	25	0
Grand Bassa	0	457	0	140	0	51	0	410	0	0
Sinoe	0	191	0	30	0	1	0	191	0	0
Lofa	0	758	0	103	0	34	0	726	0	0
Nimba	0	613	0	53	0	25	0	550	0	0
Bong	0	302	0	70	0	28	0	300	2	0
Gbarpolu	0	87	0	13	0	8	0	87	0	0
Grand Cape Mount	0	49	0	3	0	4	0	51	0	0
RiverGee	0	123	0	13	0	30	0	123	0	0
Maryland	0	208	0	28	0	19	0	136	0	0
Bomi	0	180	0	17	0	15	0	177	0	0
Rivercess	0	102	0	55	0	0	0	88	0	0
Grand Kru	0	333	0	131	0	17	0	330	0	0
Grand Gedeh	0	163	0	49	0	6	0	125	0	0
National	2	9549	0	1338	0	469	0	9175	40	3

Thank you for Listening