



# **Liberia COVID-19 Daily Sitrep 311 (20<sup>th</sup> January 2021)**

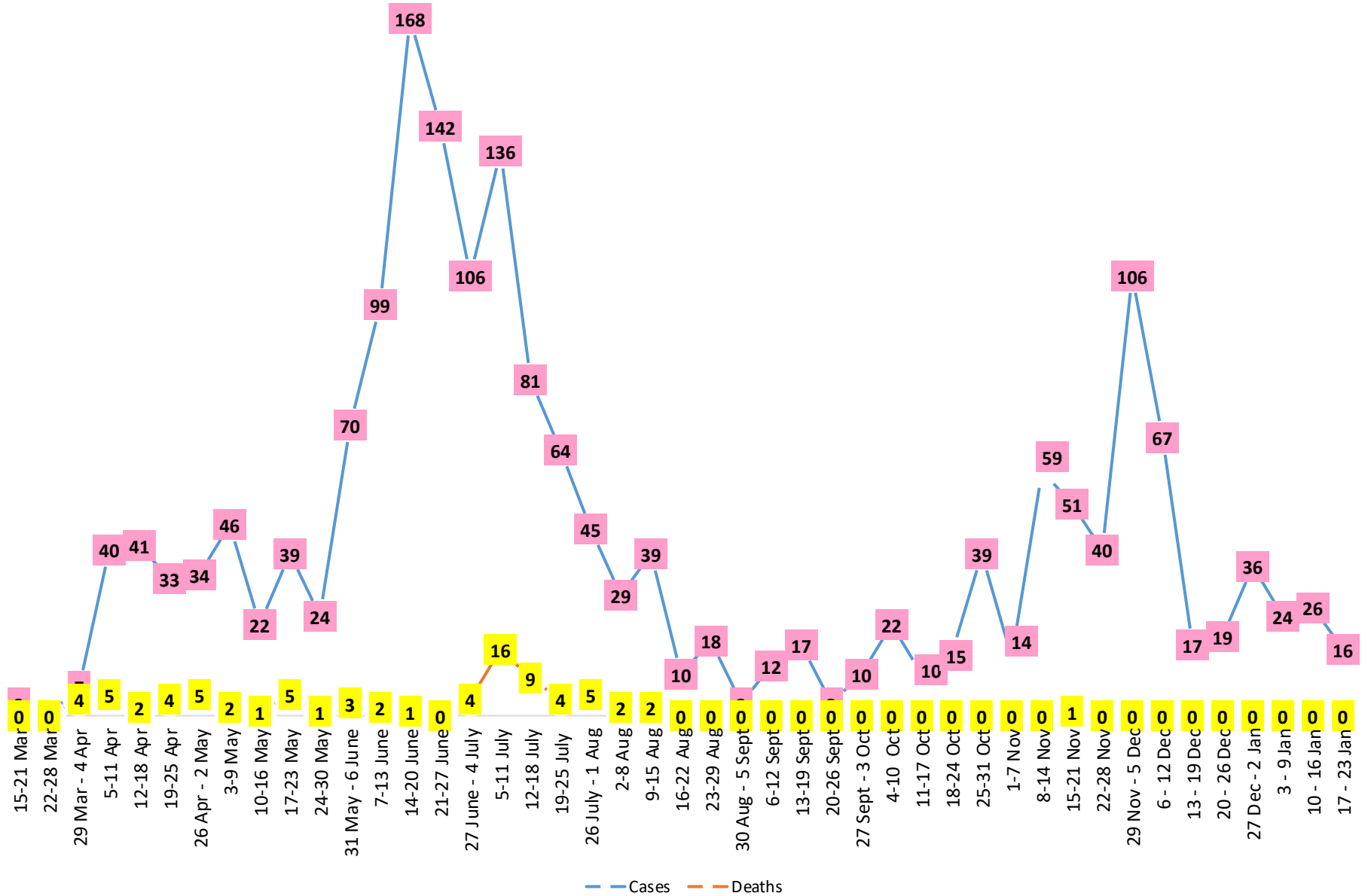
# Summary of COVID-19 Cases by Reporting County, Liberia, 16 March 2020 – 20 January 2021

County	Laboratory Confirmed Cases	Confirmed Cases on Contact List	Confirmed Cumulative Cases
<b>Bomi</b>	0	0	23
<b>Bong</b>	0	0	46
<b>Gbarpolu</b>	0	0	10
<b>Grand Bassa</b>	0	0	58
<b>Grand Cape Mount</b>	0	0	13
<b>Grand Kru</b>	0	0	18
<b>Grand Gedeh</b>	0	0	16
<b>Lofa</b>	0	0	45
<b>Margibi</b>	2	0	92
<b>Maryland</b>	0	0	33
<b>Montserrado</b>	7	0	<b>1442</b>
<b>Nimba</b>	2	0	69
<b>Rivercess</b>	0	0	5
<b>River Gee</b>	0	0	36
<b>Sinoe</b>	0	0	6
<b>NATIONAL</b>	<b>11</b>	<b>0</b>	<b>1912</b>

# Demographic Breakdown (Gender & Age) of Confirmed COVID-19 Cases (16 March 2020 – 20 January 2021)

County	<15 years		15 - 34		35 - 54		55+		All ages		Total Confirmed
	M	F	M	F	M	F	M	F	M	F	
Bomi	2	2	3	5	7	3	0	1	12	11	23
Bong	3	1	3	6	14	7	8	3	28	17	46
Gbarpolu	1	2	0	2	3	1	1	0	5	5	10
Grand Bassa	11	2	9	11	12	8	3	2	35	23	58
Grand Cape Mount	0	0	9	0	3	0	1	0	13	0	13
Grand Kru	0	0	2	5	4	5	2	0	8	10	18
Grand Gedeh	0	1	1	2	7	3	2	0	10	6	16
Lofa	3	3	8	3	13	5	8	2	32	13	45
Margibi	6	4	14	12	25	11	12	8	57	35	92
Maryland	2	0	9	6	9	4	1	2	21	12	33
<b>Montserrado</b>	50	47	352	201	397	170	153	72	952	490	1442
Nimba	1	4	15	9	26	6	5	3	47	22	69
Rivercess	0	0	2	3	0	0	0	0	2	3	5
River Gee	0	0	4	3	19	5	5	0	28	8	36
Sinoe	0	0	1	0	4	1	0	0	5	1	6
<b>National</b>	<b>79</b>	<b>66</b>	<b>432</b>	<b>268</b>	<b>543</b>	<b>229</b>	<b>201</b>	<b>93</b>	<b>1255</b>	<b>656</b>	<b>1912</b>

# COVID-19 WEEKLY EPI-CURVE



# Summary of COVID-19 Deaths by Reporting County, Liberia, 16 March 2020 – 20 January 2021

County	DAILY REPORT								Cumulative Deaths
	New Suspected Deaths	Laboratory Confirmed Deaths						Confirmed Deaths on Contact List	
		COVID-19 Treatment Unit	Total in COVID-19 Treatment Unit	Health Facility	Total in Health Facility	Community	Total in Community		
Bomi	0	0	0	0	1	0	0	0	1
Bong	0	0	0	0	4	0	1	0	5
Gbarpolu	0	0	0	0	2	0	0	0	2
Grand Bassa	0	0	0	0	0	0	0	0	0
Grand Cape Mount	0	0	0	0	0	0	0	0	0
Grand Gedeh	0	0	0	0	0	0	0	0	0
Grand Kru	0	0	0	0	0	0	0	0	0
Lofa	0	0	0	0	6	0	5	0	11
Maryland	0	0	0	0	2	0	0	0	2
Margibi	0	0	2	0	4	0	0	0	6
Montserrado	0	0	9	0	19	0	16	0	43
Nimba	0	0	2	0	5	0	4	0	11
Rivercess	0	0	0	0	1	0	1	0	2

**The Liberia Case Fatality rate (CFR) officially considered is for deaths that occurred among patients in care at the COVID-19 treatment units across the country. As of 30 December 2020 , a total of 13 deaths have been recorded CFR=1.3%. The country is however keeping active surveillance on community deaths and deaths in non COVID-19 treatment health units.**

# Daily and Cumulative Healthcare Worker (HCW) COVID-19 Cases and Deaths by County, Liberia, 16 March 2020 – 20 January 2021

County	DAILY REPORT						CUMULATIVE CASES (ALIVE & DEAD)	
	New Suspected & High Risk Cases (Alive)			New Suspect Death	Laboratory Confirmed Cases	Confirmed Cases on Contact List	Confirmed	Deaths
	Suspect	High Risk	Total					
Bomi	0	0	0	0	0	0	5	0
Bong	0	0	0	0	0	0	19	3
Gbarpolu	0	0	0	0	0	0	1	0
Grand Bassa	0	0	0	0	0	0	21	0
Grand Gedeh	0	0	0	0	0	0	2	0
Grand Kru	0	0	0	0	0	0	14	0
Lofa	0	0	0	0	0	0	16	0
Margibi	0	0	0	0	0	0	12	1
Maryland	0	0	0	0	0	0	16	0
Montserrado	0	0	0	0	0	0	86	1
Nimba	0	0	0	0	0	0	14	0
Rivercess	0	0	0	0	0	0	3	0
River Gee	0	0	0	0	0	0	10	0
Sinoe	0	0	0	0	0	0	3	0
<b>NATIONAL</b>	<b>0</b>	<b>0</b>	<b>0</b>	<b>0</b>	<b>0</b>	<b>0</b>	<b>222</b>	<b>5</b>

# Cadre Cases and Deaths by Health Care Workers (16 March 2020 – 20 January 2021)

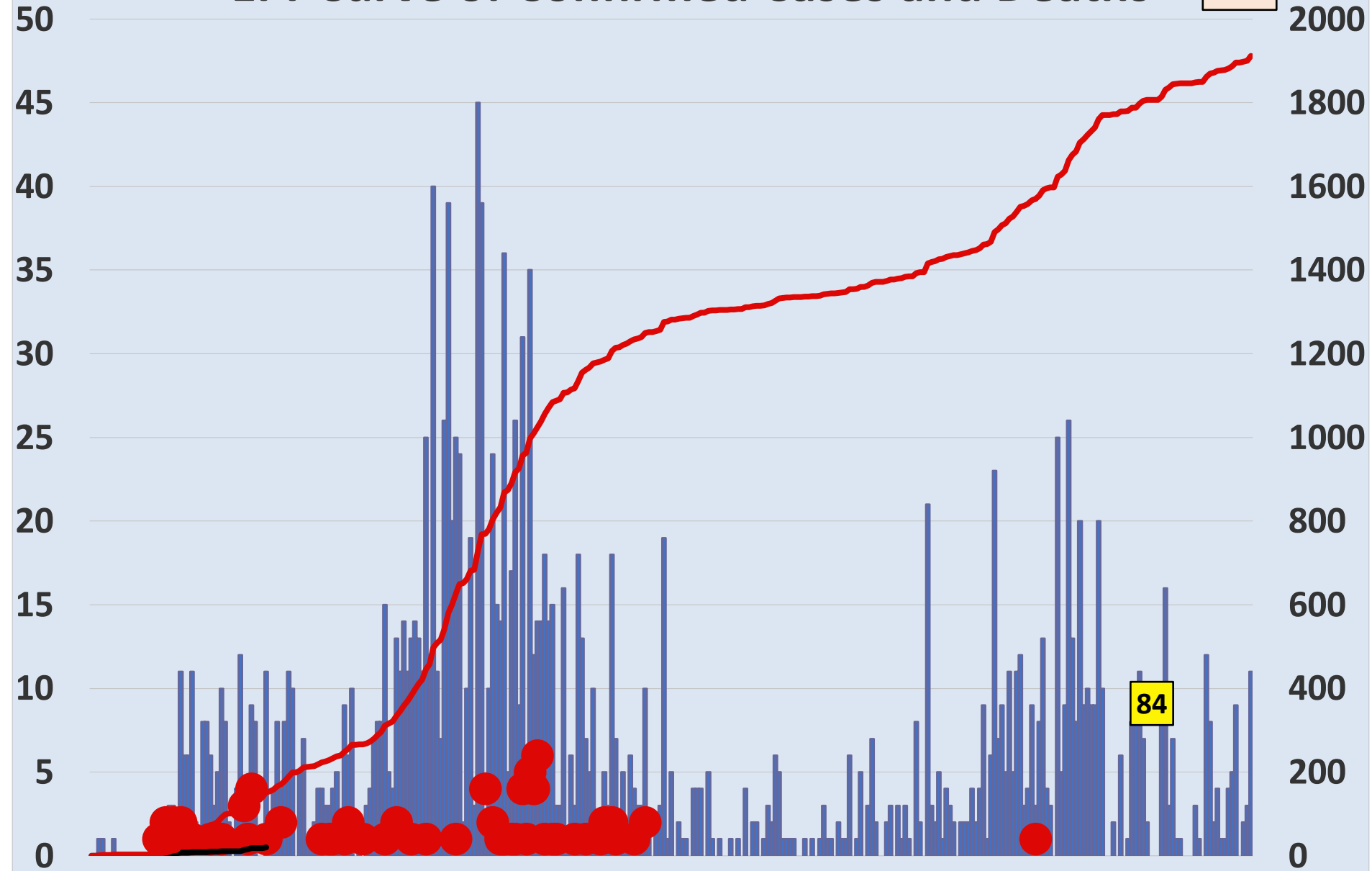
Health Care Worker Cadre	Montserratado		Margibi		Nimba		River Gee		Sinoe		Grand Kru		Gbarpolu		Bong		Lofa		Grand Bassa		Maryland		Bomi		Rivercess		Grand Gedeh		National (Total)	
	Cases	Deaths	Cases	Deaths	Cases	Deaths	Cases	Deaths	Cases	Deaths	Cases	Deaths	Cases	Deaths	Cases	Deaths	Cases	Deaths	Cases	Deaths	Cases	Deaths	Cases	Deaths	Cases	Deaths	Cases	Deaths	Cases	Deaths
Doctors	17	0	1	0	0	0	1	0	0	0	0	0	0	0	1	0	0	0	1	0	0	0	0	0	0	0	0	0	21	0
Pharmacists	4	0	0	0	0	0	0	0	0	0	0	0	0	0	0	0	0	0	0	0	0	0	0	0	0	0	0	0	4	0
Nurses	22	1	2	0	2	0	5	0	0	0	2	0	1	1	12	1	8	0	5	0	1	0	1	0	0	0	0	0	61	3
Nurse Aid	0	0	0	0	2	0	0	0	0	0	4	0	0	0	0	0	0	0	8	0	2	0	0	0	0	0	0	0	16	0
Midwife	0	0	0	0	0	0	1	0	0	0	1	0	0	0	1	0	1	0	1	0	0	0	0	0	0	0	0	0	5	0
Physician Assistants	8	0	1	0	1	0	1	0	0	0	1	0	0	0	0	0	1	0	1	0	0	0	0	0	0	0	0	0	14	0
Lab Technician	9	0	1	0	2	0	0	0	1	0	1	0	0	0	0	0	2	0	0	0	10	0	0	0	3	0	0	0	29	0
Environmental Health Technicians	5	0	0	0	0	0	0	0	0	0	0	0	0	0	0	0	0	0	0	0	0	0	0	0	0	0	0	0	5	0
Dieticians	0	0	7	1	0	0	0	0	0	0	0	0	0	0	0	0	0	0	0	0	0	0	0	0	0	0	0	0	7	1
Hospital Cleaner	1	0	0	0	0	0	0	0	0	0	1	0	0	0	1	0	0	0	1	0	2	0	0	0	0	0	0	0	6	0
Others*	20	0	0	0	7	0	2	0	2	0	4	0	0	0	4	1	4	0	4	0	1	0	4	0	0	2	0	0	54	1
<b>Total:</b>	<b>86</b>	<b>1</b>	<b>12</b>	<b>1</b>	<b>14</b>	<b>0</b>	<b>10</b>	<b>0</b>	<b>3</b>	<b>0</b>	<b>14</b>	<b>0</b>	<b>1</b>	<b>1</b>	<b>19</b>	<b>2</b>	<b>16</b>	<b>0</b>	<b>21</b>	<b>0</b>	<b>16</b>	<b>0</b>	<b>5</b>	<b>0</b>	<b>3</b>	<b>0</b>	<b>2</b>	<b>0</b>	<b>222</b>	<b>5</b>

**\*Others include the following:**

**Radiologist, Microbiologist, Epidemiologist, Dispenser, Licensed Practical Nurse, Psychosocial worker, Hygienist, Logistician, Vaccinator, Ambulance Driver, Procurement Officer, Registrar, Accountant, Secretary, Hospital Administrator, Community Health Volunteer, GIS Specialist, EOC Coordinator**

# EPI-Curve of Confirmed Cases and Deaths

1912

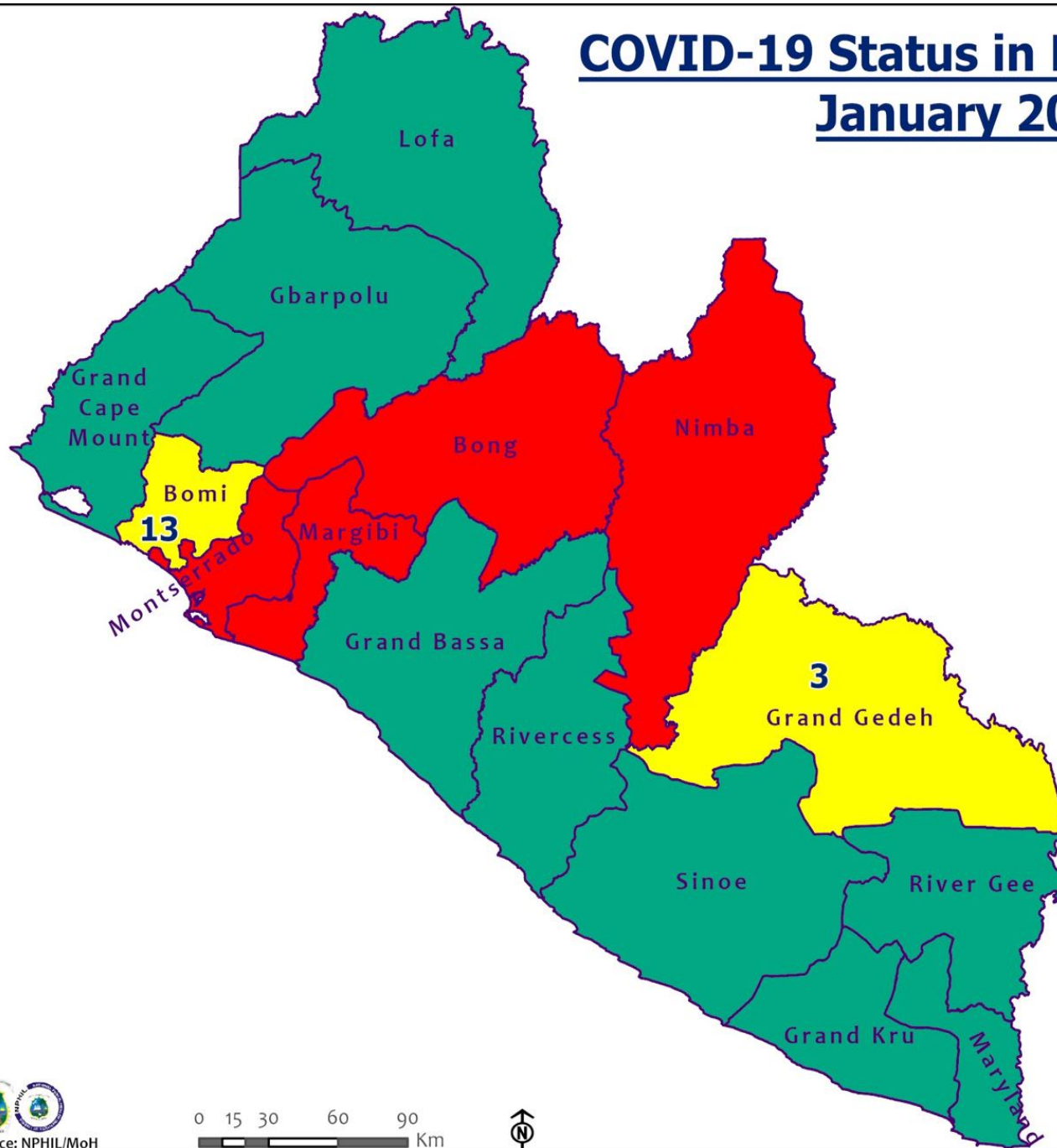


84

■ Daily Cases  
● Daily Deaths



# COVID-19 Status in Liberia by County January 20, 2021



**Legend**

County Status

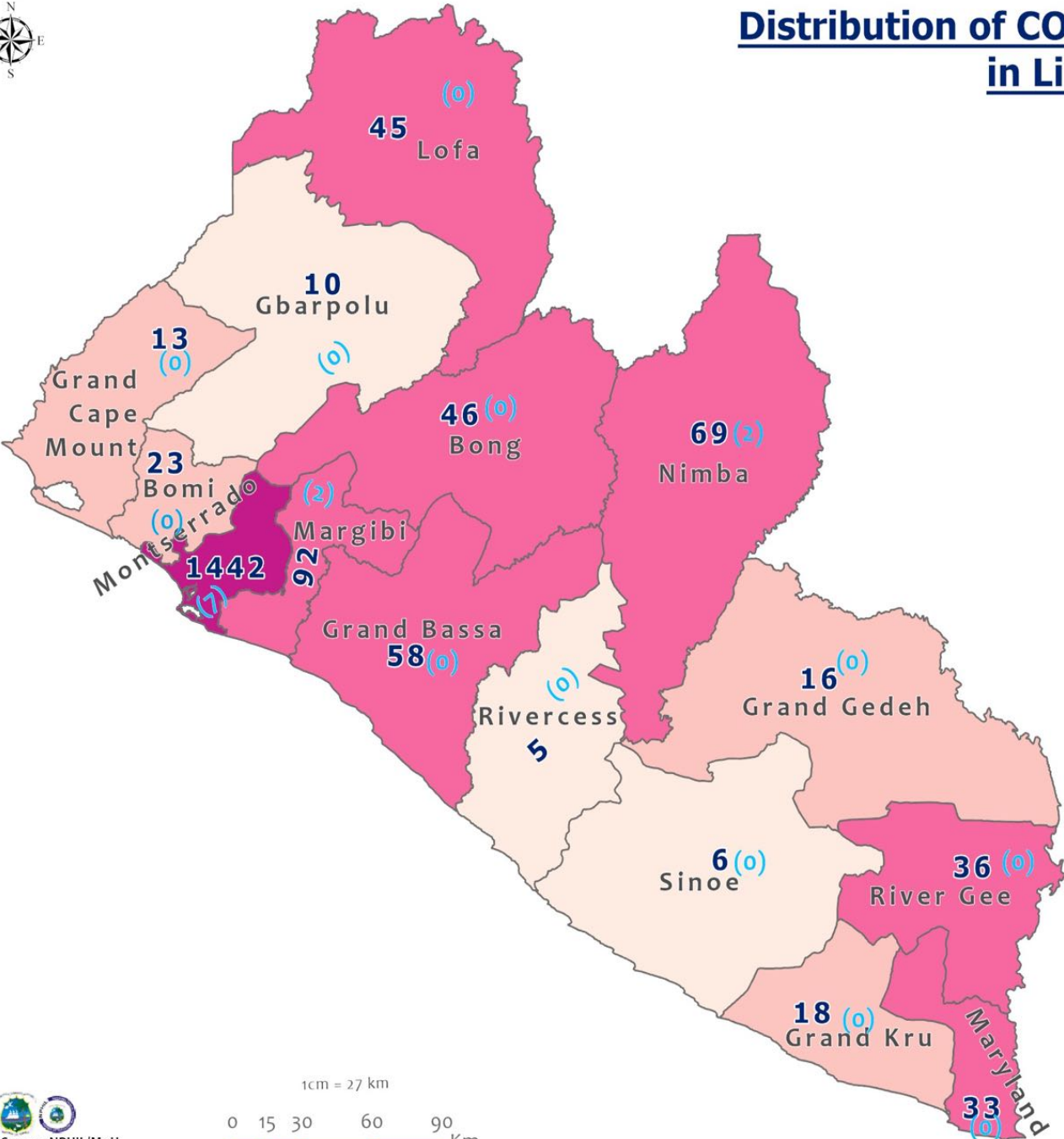
- Preparedness
- 28-Day Countdown
- Response



Data Source: NPHIL/MoH



# Distribution of COVID-19 Cases by County in Liberia - January 20, 2021



Total cumulative cases:

**1912**

Total new cases:

**11**

### Legend

Number of Cases



Cumulative cases

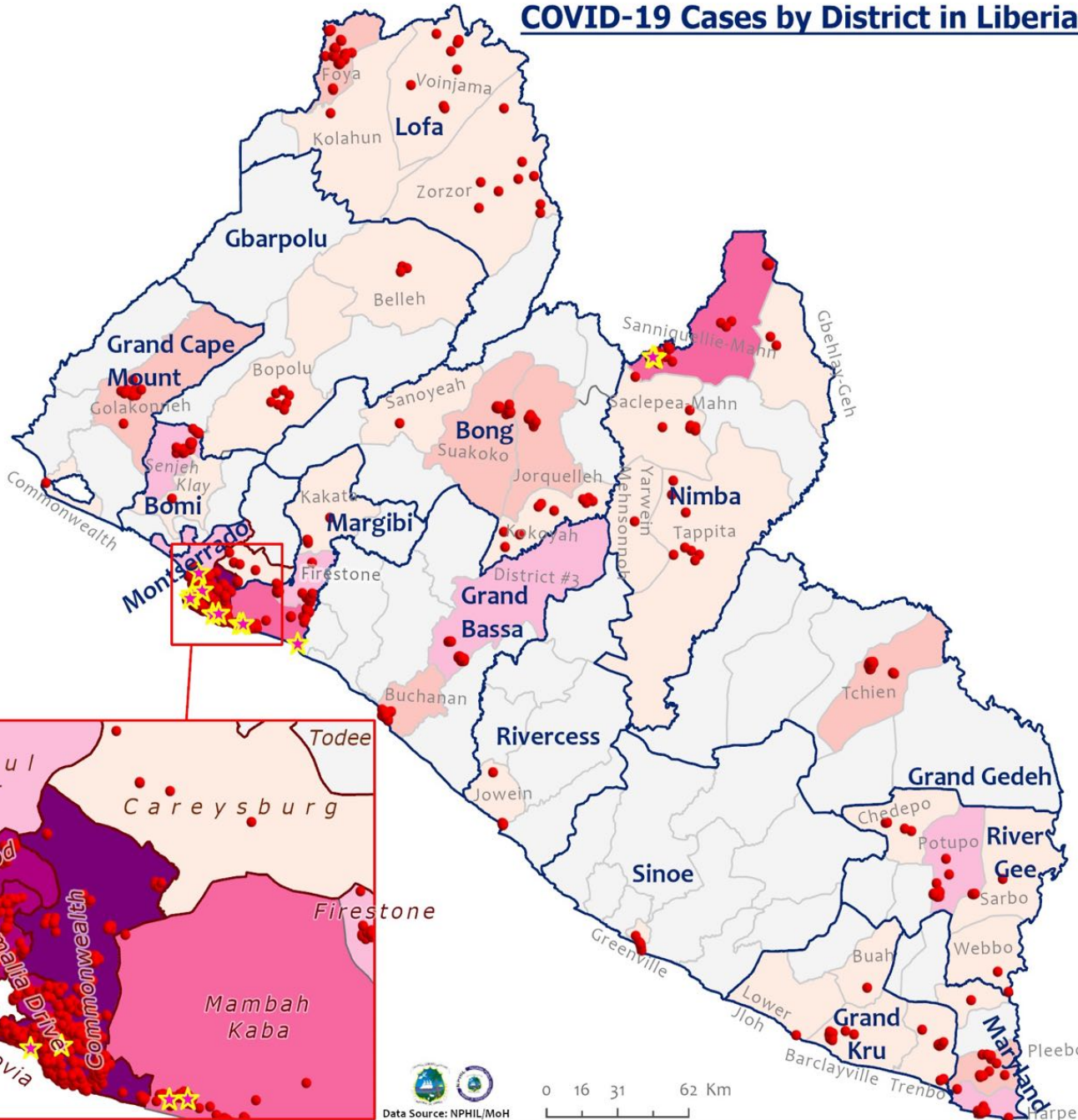
New cases

**0** (0)

1cm = 27 km



# COVID-19 Cases by District in Liberia - January 20, 2021



**Total Cases: 1912**

Affected Counties	Cumulative Cases
Montserrado	1442
Margibi	90
Nimba	69
Grand Bassa	58
Bong	46
Lofa	45
River Gee	36
Maryland	33
Bomi	23
Grand Kru	18
Grand Gedeh	16
Grand Cape Mount	13
Gbarpolu	10
Sinoe	6
Rivercess	5

## Legend

### Case Status

- ★ New confirmed case
- Confirmed cases

### Cases / District

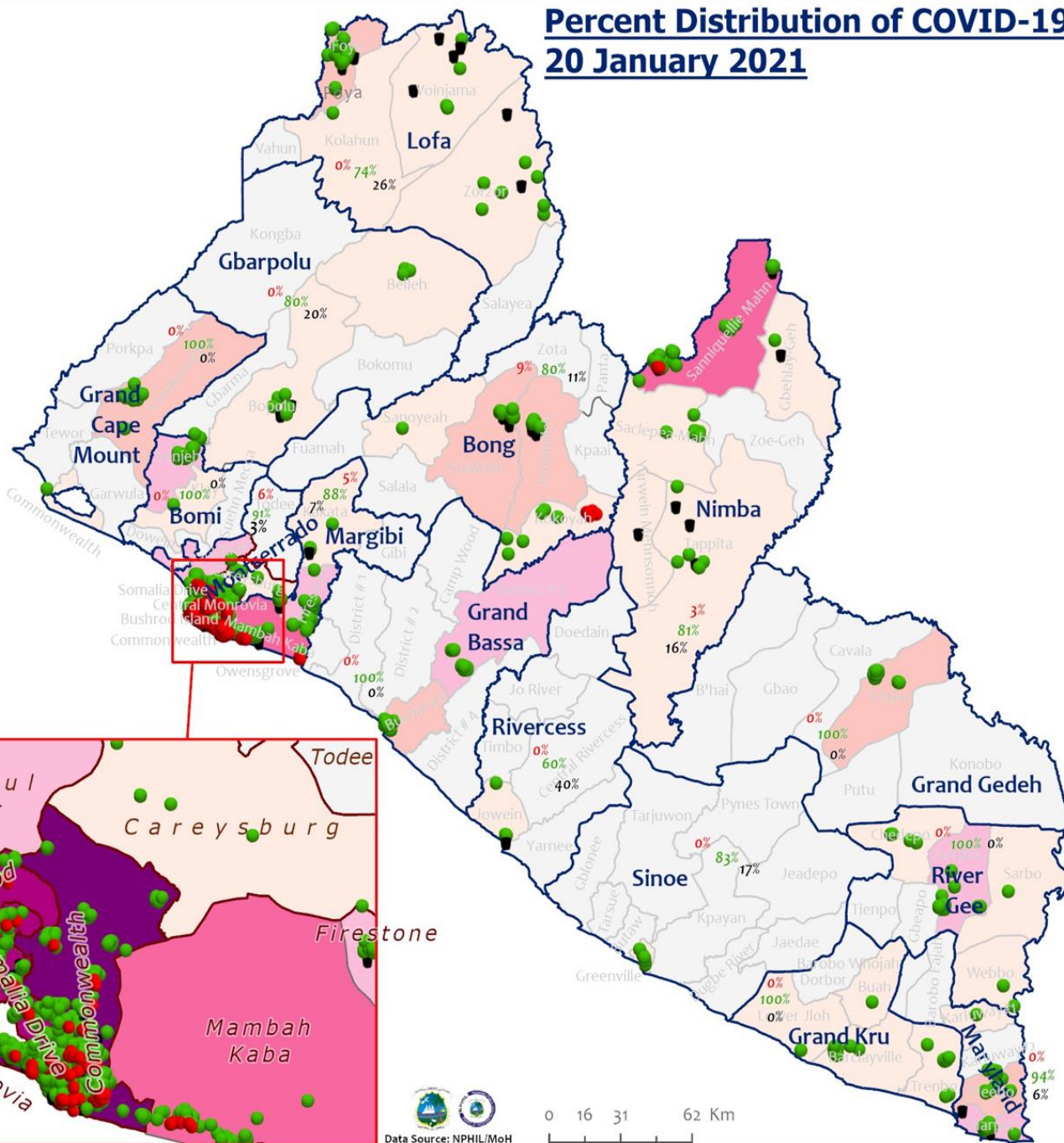
- 0
- 1-10
- 11-20
- 21-50
- 51-100
- 101-200
- 201-600



Data Source: NP/HIL/MoH



# Percent Distribution of COVID-19 Cases Status, Liberia 20 January 2021



**Total Cases: 1912**

Affected Counties	Cumulative Cases
Montserrado	1442
Margibi	92
Nimba	69
Grand Bassa	58
Bong	46
Lofa	45
River Gee	36
Maryland	33
Bomi	23
Grand Kru	18
Grand Gedeh	16
Grand Cape Mount	13
Gbarpolu	10
Sinoe	6
Rivercess	5

## Legend

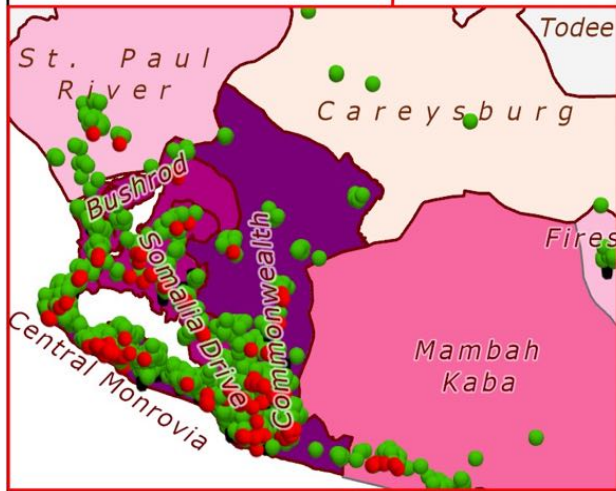
### Case Status

- Active
- Recovered
- Dead

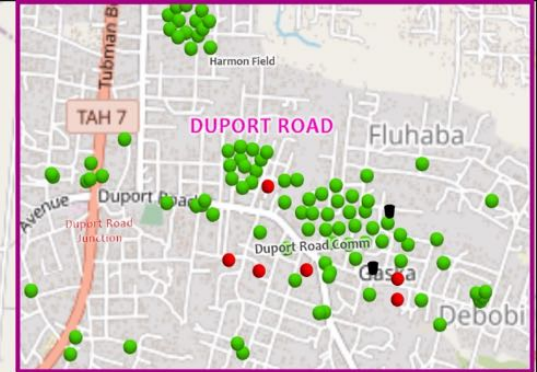
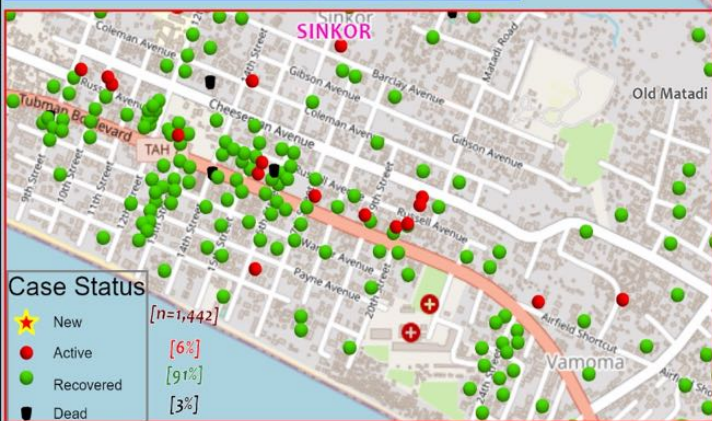
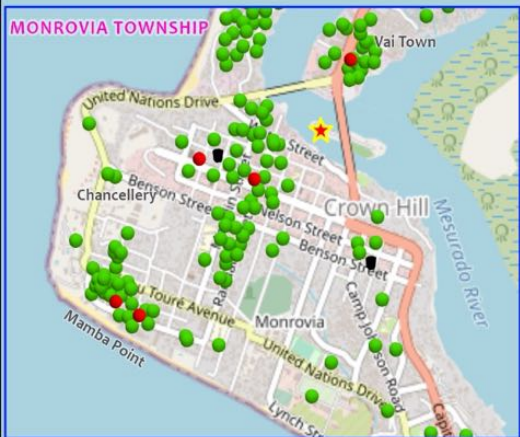
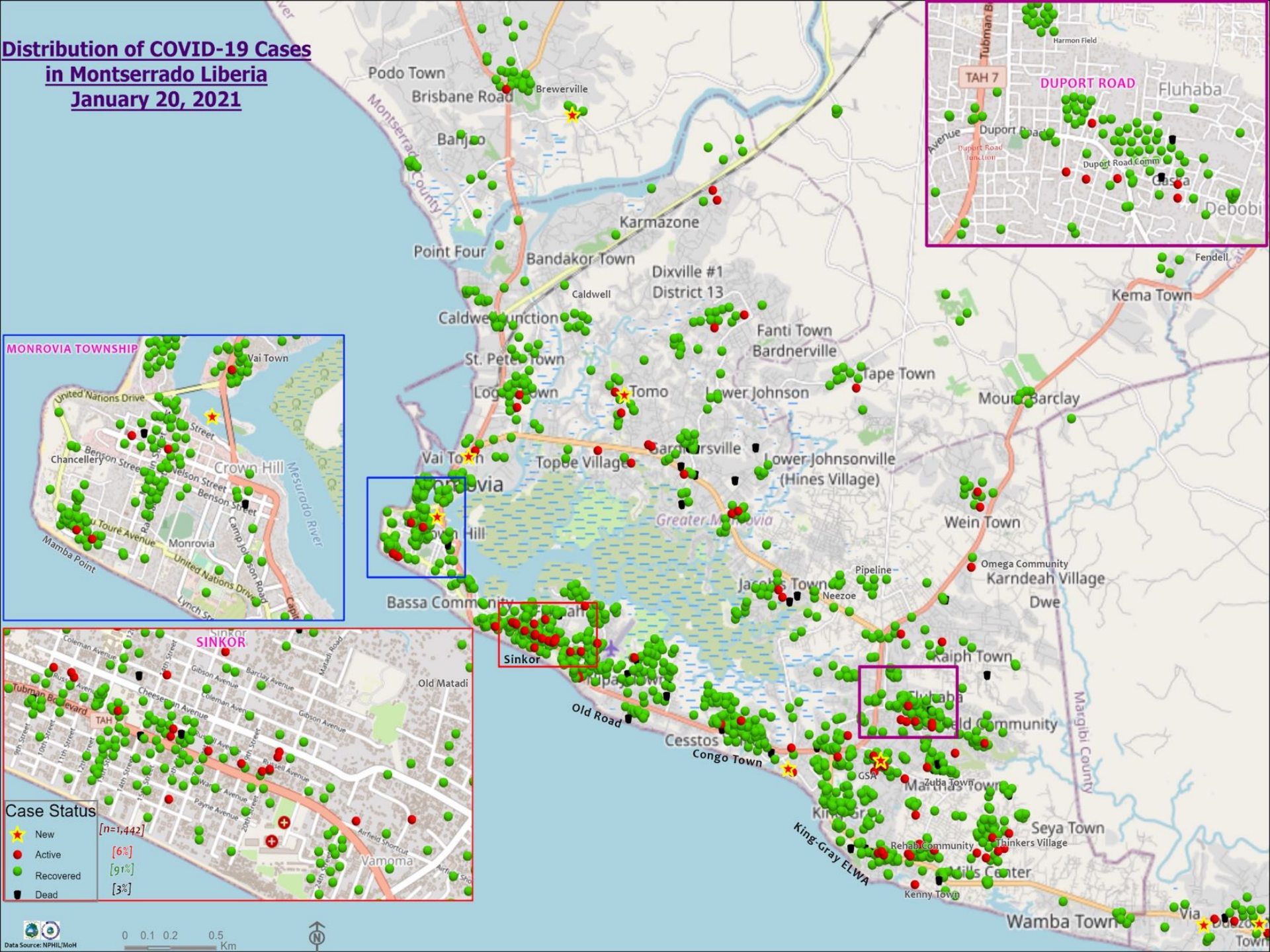
[6%]  
[90%]  
[4%]

### Cases / District

- 0
- 1-10
- 11-20
- 21-50
- 51-100
- 101-200
- 201-600



# Distribution of COVID-19 Cases in Montserrato Liberia January 20, 2021



**Case Status**

★ New	[n=1,442]
● Active	[6%]
● Recovered	[91%]
■ Dead	[3%]

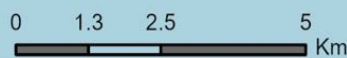
# COVID-19 Cases Distribution: Scheffelin Township, Marshall City and Harbel, Margibi County, Liberia - January 20, 2021



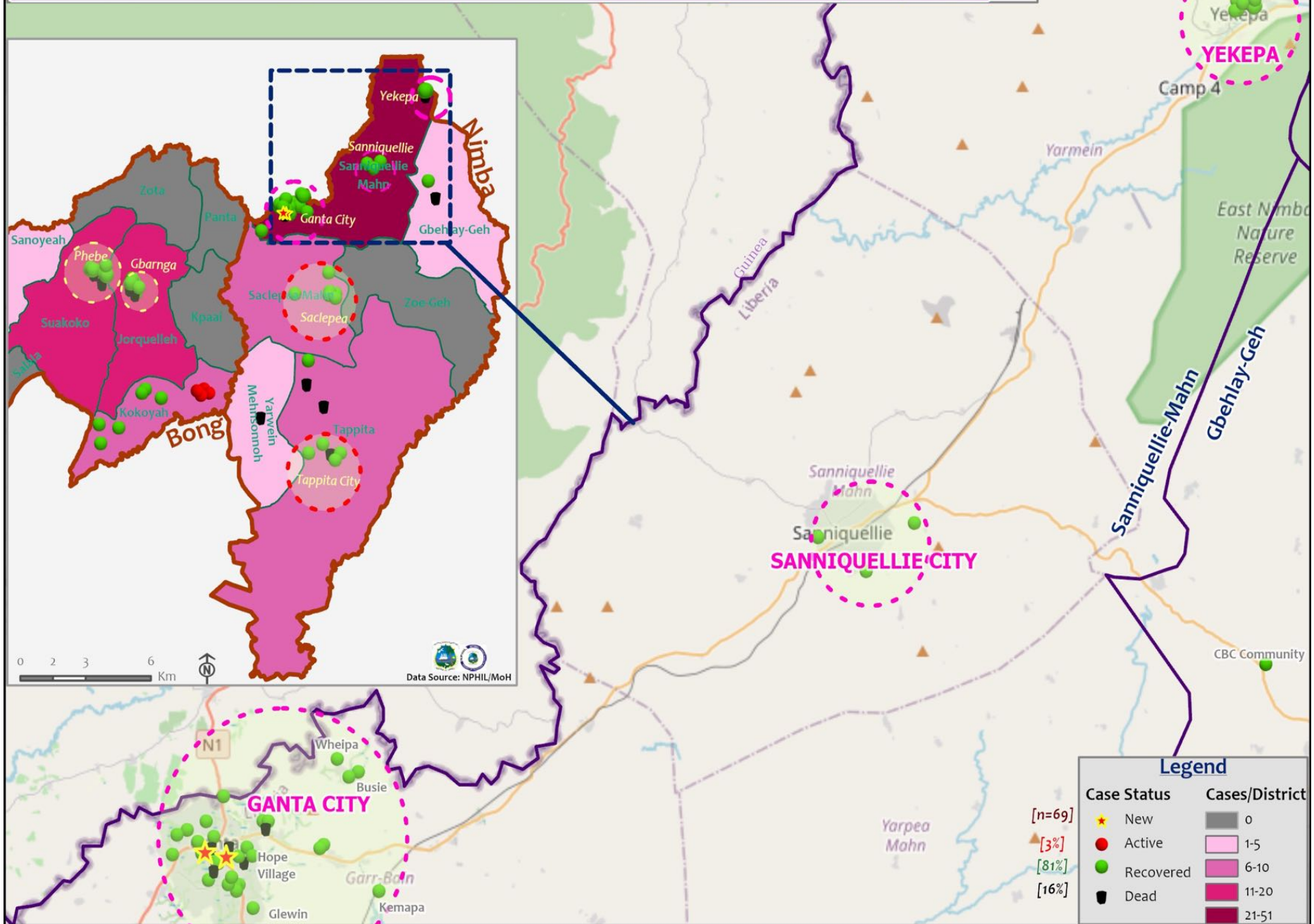
Case Status Proportion	
<span style="color: yellow;">★</span> New	[n=68]
<span style="color: red;">●</span> Active	[9%]
<span style="color: green;">●</span> Recovered	[88%]
<span style="color: black;">■</span> Dead	[3%]



Data Source: NPHIL/MoH



# Distribution of COVID-19 Cases in Nimba, Liberia - January 20, 2021



# Summary of confirmed, recovered, active, and dead cases by reporting counties, Liberia, 16 March 2020 – 20 January 2021

County	Confirmed Cases		Recovered Cases		Active Cases	Dead Cases	
	New	Cum	New	Cum		New	Cum
Bomi	0	23	0	22	0	0	1
Bong	0	46	0	36	5	0	5
Gbarpolu	0	10	0	8	0	0	2
Grand Bassa	0	58	0	58	0	0	0
Grand Cape Mount	0	13	0	13	0	0	0
Grand Gedeh	0	16	0	16	0	0	0
Grand Kru	0	18	0	18	0	0	0
Lofa	0	45	0	34	0	0	11
Margibi	2	92	0	81	5	0	6
Maryland	0	33	0	31	0	0	2
Montserrado	7	1442	0	1297	102	0	43
Nimba	2	69	0	56	2	0	11
Rivercess	0	5	0	3	0	0	2
River Gee	0	36	0	36	0	0	0
Sinoe	0	6	0	5	0	0	1
<b>National</b>	<b>11</b>	<b>1912</b>	<b>0</b>	<b>1714</b>	<b>114</b>	<b>0</b>	<b>84</b>



# Daily Summary Report at Treatment Units – 20 January 2021

Treatment Facility Name	New Admissions	Cumulative Admission	Daily Discharges	Cumulative Recoveries	Daily Deaths	Cumulative Deaths	Currently in treatment
Bomi LGH Treatment Unit	0	18	0	18	0	0	0
Bong Treatment Unit	0	26	0	26	0	0	0
Chief Jallahlone Hospital Treatment Unit	0	1	0	1	0	0	0
Grand Bassa Arcelor Mittal Treatment Unit	0	5	0	5	0	0	0
Grand Bassa LGH Treatment Unit	0	3	0	3	0	0	0
LAC Treatment Unit	0	42	0	42	0	0	0
14 Military Hospital Treatment Unit	0	637	0	631	0	9	2
Union Treatment Center	0	78	0	78	0	0	0
Duside Hospital Treatment Unit	0	42	0	40	0	2	0
Martha Tubman Hospital Treatment Unit	0	12	0	13	0	0	0
Rally Time Treatment Unit	0	4	0	4	0	0	0
Sasstown Treatment Unit	0	7	0	7	0	0	0
Behwan Treatment Unit	0	7	0	7	0	0	0
FJ Grante Hospital Treatment Unit	0	5	0	5	0	0	0
JJ Dossen Hospital Treatment Unit	0	9	0	9	0	0	0
Pleebo Health Center Treatment Unit	0	21	0	21	0	0	0
Tellewoyan Memorial Hospital Treatment Unit	0	13	0	13	0	0	0
Foya Borma Hospital Treatment Unit	0	12	0	12	0	0	0
Zorzor Treatment Unit	0	6	0	6	0	0	0
Robert Sport Treatment Unit	0	1	0	1	0	0	0
Ganta United Methodist Hospital Treatment Unit	0	1	0	1	0	0	0
Arcelor Mittal Yekepa Treatment Unit	0	12	0	12	0	0	0
Jackson F. Doe Treatment Unit	0	5	0	4	0	1	0
St. Frances Hospital Treatment Unit	0	2	0	2	0	0	0
Fish Town Hospital Treatment Unit	0	36	0	36	0	0	0
E&J Medical Center Treatment Unit	0	20	0	19	0	1	0
<b>TOTAL</b>	<b>0</b>	<b>1025</b>	<b>0</b>	<b>1016</b>	<b>0</b>	<b>13</b>	<b>2</b>

# Home-Base Care of COVID-19 Cases

County	New Admissions	Currently in Admissions	No. Followed-up (In-person/Phone)	Cumulative Admissions	New Recoveries	Cumulative Recoveries	Referrals to TU	Cumulative Referrals to TU	New Death	Cumulative Deaths
Montserrado	1	33	20	159	1	137	0	5	0	0
Grand Cape Mount				0						
Grand Gedeh				0						
Nimba				0						
Bomi				0						
Maryland				0						
Bong				0						
<b>Total:</b>	<b>1</b>	<b>33</b>	<b>20</b>	<b>159</b>	<b>1</b>	<b>137</b>	<b>0</b>	<b>5</b>	<b>0</b>	<b>0</b>

# Laboratory Samples Evaluated – 20 January 2021

<b>County</b>	<b>Sample Evaluated</b>	<b>New Positive</b>	<b>Repeat Positive</b>	<b>Initial Negative</b>	<b>Repeat Test Negative</b>	<b>Pending Lab Result</b>
<b>Bong</b>	5	0	0	2	0	3
<b>Grand Bassa</b>	2	0	0	2	0	0
<b>Grand Cape Mount</b>	2	0	0	1	0	1
<b>Margibi</b>	10	2	0	7	0	1
<b>Montserrado</b>	201	7	0	162	0	32
<b>Nimba</b>	6	2	0	3	0	1
<b>TOTAL</b>	<b>226</b>	<b>11</b>	<b>0</b>	<b>177</b>	<b>0</b>	<b>38</b>
<b> </b>						
<b>Outgoing Traveler</b>	205	0	0	169	0	36
<b>Incoming Traveler</b>	21	11	0	8	0	2
<b>Voluntary</b>	0	0	0	0	0	0

# Summary of COVID-19 Daily PoE in Response Counties – Jan. 20

Date of travel	Type of PoE	Point of Entry Name	Type of conveyance	# of Travelers Arrival	# of Travelers departure	Total Travelers screened		Total passengers tested	Total Foreign diplomat Exempted	# of Children under 5 years not tested	Total # of Travelers
						Male	Female				
20-Jan	Airport	RIA	Air Morac	0	0	0	0	0	0	0	0
			Brussels	0	0	0	0	0	0	0	0
			AWA	22	32	34	20	50	2	2	54
			Air France	13	39	34	18	49	3	0	52
			Air Cote D'Ivoire	0	0	0	0	0	0	0	0
			DHL	0	0	0	0	0	0	0	0
			Kenya	0	0	0	0	0	0	0	0
			Askya	55	0	33	22	49	3	3	55
			Others	0	0	0	0	0	0	0	0
	James Spriggs Payne Airport		0	0	0	0	0	0	0	0	
	Bo Water Side	Land	56	66	24	98	122	0	0	122	
	Seaport	Buchanan	Vessel	0	0	0	0	0	0	0	0
Freeport of Monrovia		Vessel	19	0	19	0	19	0	0	19	
<b>Total:</b>				<b>165</b>	<b>137</b>	<b>144</b>	<b>158</b>	<b>289</b>	<b>8</b>	<b>5</b>	<b>302</b>

# Summary of COVID-19 Contact Tracing in Response Counties

County	New Contacts Line listed	Cumulative Contacts	No. of Health Care Workers as Contacts	Cumulative no. of Health Care Workers as contacts	Contacts became a case	Cumulative contacts that became a case	Contacts Completed 14 Days	Cumulative Contacts Completing 14 Days	Contacts Under Follow-up	Contacts lost to Follow-up
<b>Montserratado</b>	0	5426	0	508	0	189	0	5339	11	3
<b>Margibi</b>	0	480	0	125	0	42	0	470	10	0
<b>Grand Bassa</b>	0	457	0	140	0	51	0	407	0	0
<b>Sinoe</b>	0	191	0	30	0	1	0	191	0	0
<b>Lofa</b>	0	758	0	103	0	34	0	726	0	0
<b>Nimba</b>	0	613	0	53	0	25	0	550	0	0
<b>Bong</b>	0	302	0	70	0	28	0	300	13	0
<b>Gbarpolu</b>	0	87	0	13	0	8	0	87	0	0
<b>Grand Cape Mount</b>	0	49	0	3	0	4	0	51	0	0
<b>RiverGee</b>	0	123	0	13	0	30	0	123	0	0
<b>Maryland</b>	0	208	0	28	0	19	0	136	0	0
<b>Bomi</b>	0	180	0	17	0	15	0	177	0	0
<b>Rivercess</b>	0	102	0	55	0	0	0	88	0	0
<b>Grand Kru</b>	0	333	0	131	0	17	0	330	0	0
<b>Grand Gedeh</b>	0	163	0	49	0	6	0	125	0	0
<b>National</b>	<b>0</b>	<b>9472</b>	<b>0</b>	<b>1338</b>	<b>0</b>	<b>469</b>	<b>0</b>	<b>9100</b>	<b>34</b>	<b>3</b>

**Thank you for Listening**