



Liberia COVID-19 Daily Sitrep 309 (18th January 2021)

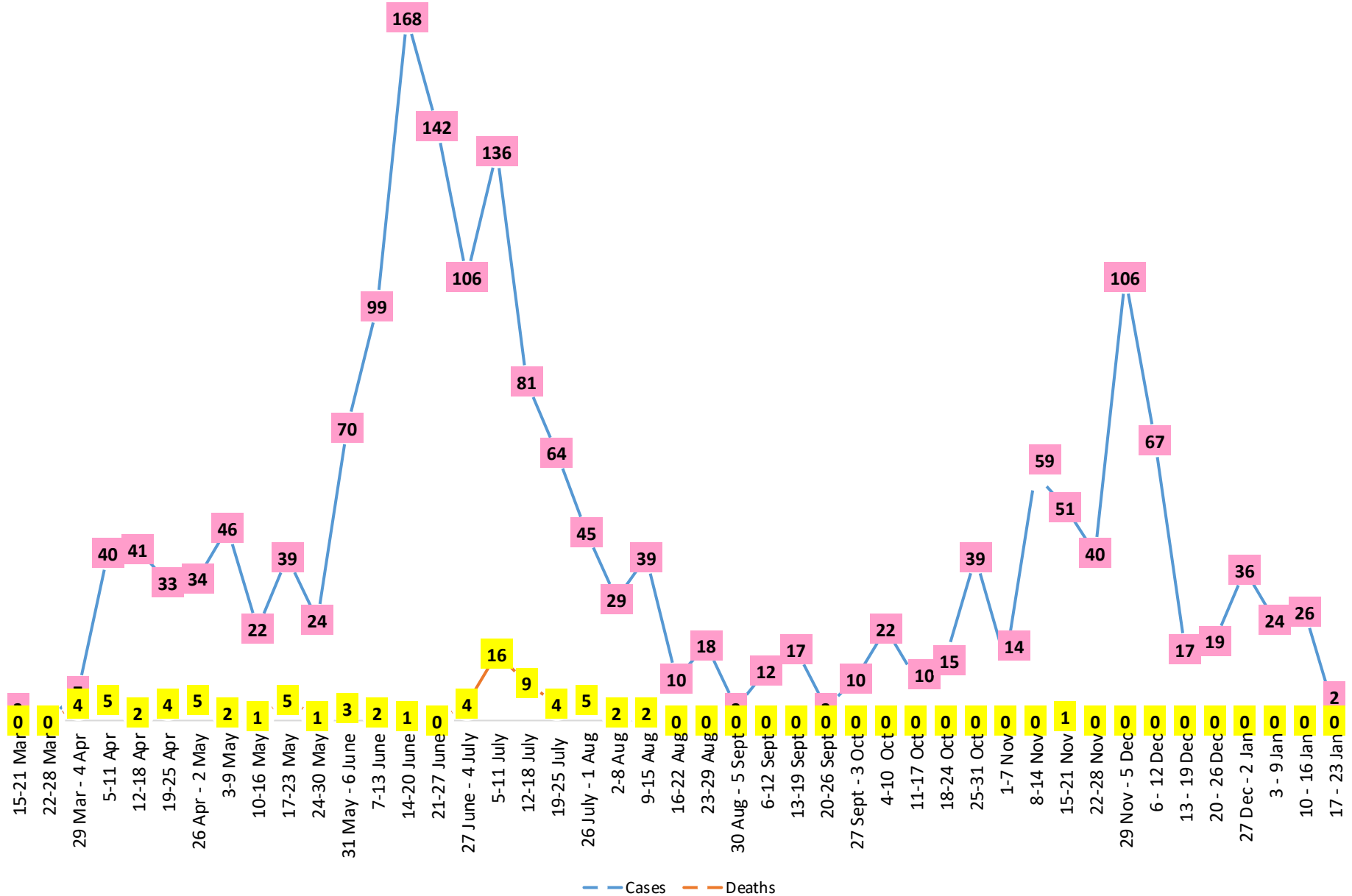
Summary of COVID-19 Cases by Reporting County, Liberia, 16 March 2020 – 18 January 2021

County	Laboratory Confirmed Cases	Confirmed Cases on Contact List	Confirmed Cumulative Cases
Bomi	0	0	23
Bong	0	0	46
Gbarpolu	0	0	10
Grand Bassa	0	0	58
Grand Cape Mount	0	0	13
Grand Kru	0	0	18
Grand Gedeh	0	0	16
Lofa	0	0	45
Margibi	0	0	90
Maryland	0	0	33
Montserrado	2	0	1432
Nimba	0	0	67
Rivercess	0	0	5
River Gee	0	0	36
Sinoe	0	0	6
NATIONAL	2	0	1898

Demographic Breakdown (Gender & Age) of Confirmed COVID-19 Cases (16 March 2020 – 18 January 2021)

County	<15 years		15 - 34		35 - 54		55+		All ages		Total Confirmed
	M	F	M	F	M	F	M	F	M	F	
Bomi	2	2	3	5	7	3	0	1	12	11	23
Bong	3	1	3	6	14	7	8	3	28	17	46
Gbarpolu	1	2	0	2	3	1	1	0	5	5	10
Grand Bassa	11	2	9	11	12	8	3	2	35	23	58
Grand Cape Mount	0	0	9	0	3	0	1	0	13	0	13
Grand Kru	0	0	2	5	4	5	2	0	8	10	18
Grand Gedeh	0	1	1	2	7	3	2	0	10	6	16
Lofa	3	3	8	3	13	5	8	2	32	13	45
Margibi	6	4	14	12	24	10	12	8	56	34	90
Maryland	2	0	9	6	9	4	1	2	21	12	33
Montserrado	50	47	350	200	393	169	152	71	945	487	1432
Nimba	1	4	14	8	26	6	5	3	46	21	67
Rivercess	0	0	2	3	0	0	0	0	2	3	5
River Gee	0	0	4	3	19	5	5	0	28	8	36
Sinoe	0	0	1	0	4	1	0	0	5	1	6
National	79	66	429	266	538	227	200	92	1246	651	1898

COVID-19 WEEKLY EPI-CURVE



Summary of COVID-19 Deaths by Reporting County, Liberia, 16 March 2020 – 18 January 2021

County	DAILY REPORT								Cumulative Deaths
	New Suspected Deaths	Laboratory Confirmed Deaths						Confirmed Deaths on Contact List	
		COVID-19 Treatment Unit	Total in COVID-19 Treatment Unit	Health Facility	Total in Health Facility	Community	Total in Community		
Bomi	0	0	0	0	1	0	0	0	1
Bong	0	0	0	0	4	0	1	0	5
Gbarpolu	0	0	0	0	2	0	0	0	2
Grand Bassa	0	0	0	0	0	0	0	0	0
Grand Cape Mount	0	0	0	0	0	0	0	0	0
Grand Gedeh	0	0	0	0	0	0	0	0	0
Grand Kru	0	0	0	0	0	0	0	0	0
Lofa	0	0	0	0	6	0	5	0	11
Maryland	0	0	0	0	2	0	0	0	2
Margibi	0	0	2	0	4	0	0	0	6
Montserrado	0	0	9	0	19	0	16	0	43
Nimba	0	0	2	0	5	0	4	0	11
Rivercess	0	0	0	0	1	0	1	0	2

The Liberia Case Fatality rate (CFR) officially considered is for deaths that occurred among patients in care at the COVID-19 treatment units across the country. As of 30 December 2020 , a total of 13 deaths have been recorded CFR=1.3%. The country is however keeping active surveillance on community deaths and deaths in non COVID-19 treatment health units.

Daily and Cumulative Healthcare Worker (HCW) COVID-19 Cases and Deaths by County, Liberia, 16 March 2020 – 18 January 2021

County	DAILY REPORT						CUMULATIVE CASES (ALIVE & DEAD)	
	New Suspected & High Risk Cases (Alive)			New Suspect Death	Laboratory Confirmed Cases	Confirmed Cases on Contact List	Confirmed	Deaths
	Suspect	High Risk	Total					
Bomi	0	0	0	0	0	0	5	0
Bong	0	0	0	0	0	0	19	3
Gbarpolu	0	0	0	0	0	0	1	0
Grand Bassa	0	0	0	0	0	0	21	0
Grand Gedeh	0	0	0	0	0	0	2	0
Grand Kru	0	0	0	0	0	0	14	0
Lofa	0	0	0	0	0	0	16	0
Margibi	0	0	0	0	0	0	12	1
Maryland	0	0	0	0	0	0	16	0
Montserrado	0	0	0	0	0	0	86	1
Nimba	0	0	0	0	0	0	14	0
Rivercess	0	0	0	0	0	0	3	0
River Gee	0	0	0	0	0	0	10	0
Sinoe	0	0	0	0	0	0	3	0
NATIONAL	0	0	0	0	0	0	222	5

Cadre Cases and Deaths by Health Care Workers (16 March 2020 – 18 January 2021)

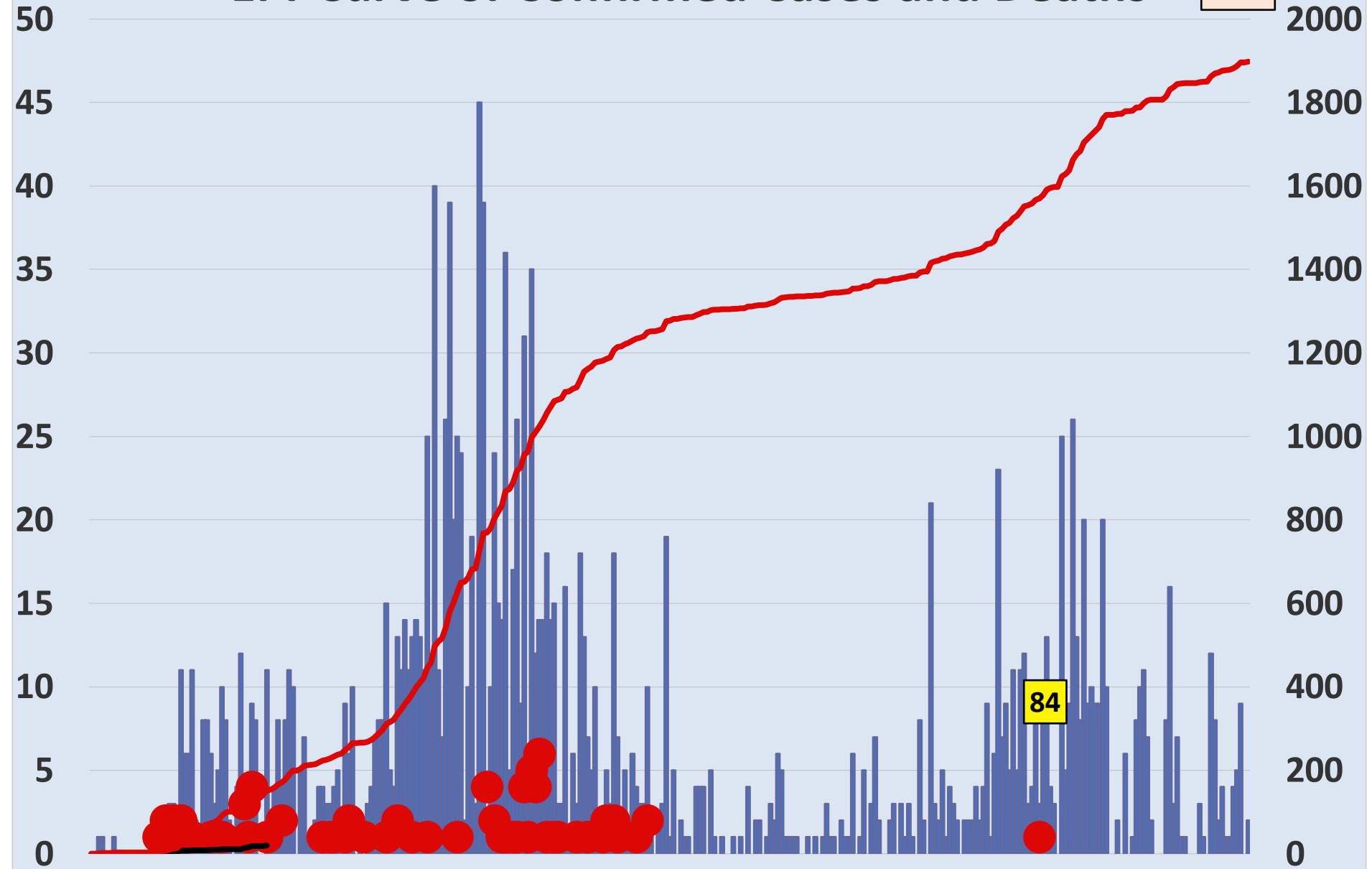
Health Care Worker Cadre	Montserratado		Margibi		Nimba		River Gee		Sinoe		Grand Kru		Gbarpolu		Bong		Lofa		Grand Bassa		Maryland		Bomi		Rivercess		Grand Gedeh		National (Total)	
	Cases	Deaths	Cases	Deaths	Cases	Deaths	Cases	Deaths	Cases	Deaths	Cases	Deaths	Cases	Deaths	Cases	Deaths	Cases	Deaths	Cases	Deaths	Cases	Deaths	Cases	Deaths	Cases	Deaths	Cases	Deaths	Cases	Deaths
Doctors	17	0	1	0	0	0	1	0	0	0	0	0	0	0	1	0	0	0	1	0	0	0	0	0	0	0	0	0	21	0
Pharmacists	4	0	0	0	0	0	0	0	0	0	0	0	0	0	0	0	0	0	0	0	0	0	0	0	0	0	0	4	0	
Nurses	22	1	2	0	2	0	5	0	0	0	2	0	1	1	12	1	8	0	5	0	1	0	1	0	0	0	0	61	3	
Nurse Aid	0	0	0	0	2	0	0	0	0	0	4	0	0	0	0	0	0	8	0	2	0	0	0	0	0	0	0	16	0	
Midwife	0	0	0	0	0	0	1	0	0	0	1	0	0	0	1	0	1	0	1	0	0	0	0	0	0	0	0	5	0	
Physician Assistants	8	0	1	0	1	0	1	0	0	0	1	0	0	0	0	0	1	0	1	0	0	0	0	0	0	0	0	14	0	
Lab Technician	9	0	1	0	2	0	0	0	1	0	1	0	0	0	0	0	2	0	0	0	10	0	0	0	3	0	0	29	0	
Environmental Health Technicians	5	0	0	0	0	0	0	0	0	0	0	0	0	0	0	0	0	0	0	0	0	0	0	0	0	0	0	5	0	
Dieticians	0	0	7	1	0	0	0	0	0	0	0	0	0	0	0	0	0	0	0	0	0	0	0	0	0	0	0	7	1	
Hospital Cleaner	1	0	0	0	0	0	0	0	0	0	1	0	0	0	1	0	0	0	1	0	2	0	0	0	0	0	0	6	0	
Others*	20	0	0	0	7	0	2	0	2	0	4	0	0	0	4	1	4	0	4	0	1	0	4	0	0	2	0	54	1	
Total:	86	1	12	1	14	0	10	0	3	0	14	0	1	1	19	2	16	0	21	0	16	0	5	0	3	0	2	0	222	5

***Others include the following:**

Radiologist, Microbiologist, Epidemiologist, Dispenser, Licensed Practical Nurse, Psychosocial worker, Hygienist, Logistician, Vaccinator, Ambulance Driver, Procurement Officer, Registrar, Accountant, Secretary, Hospital Administrator, Community Health Volunteer, GIS Specialist, EOC Coordinator

EPI-Curve of Confirmed Cases and Deaths

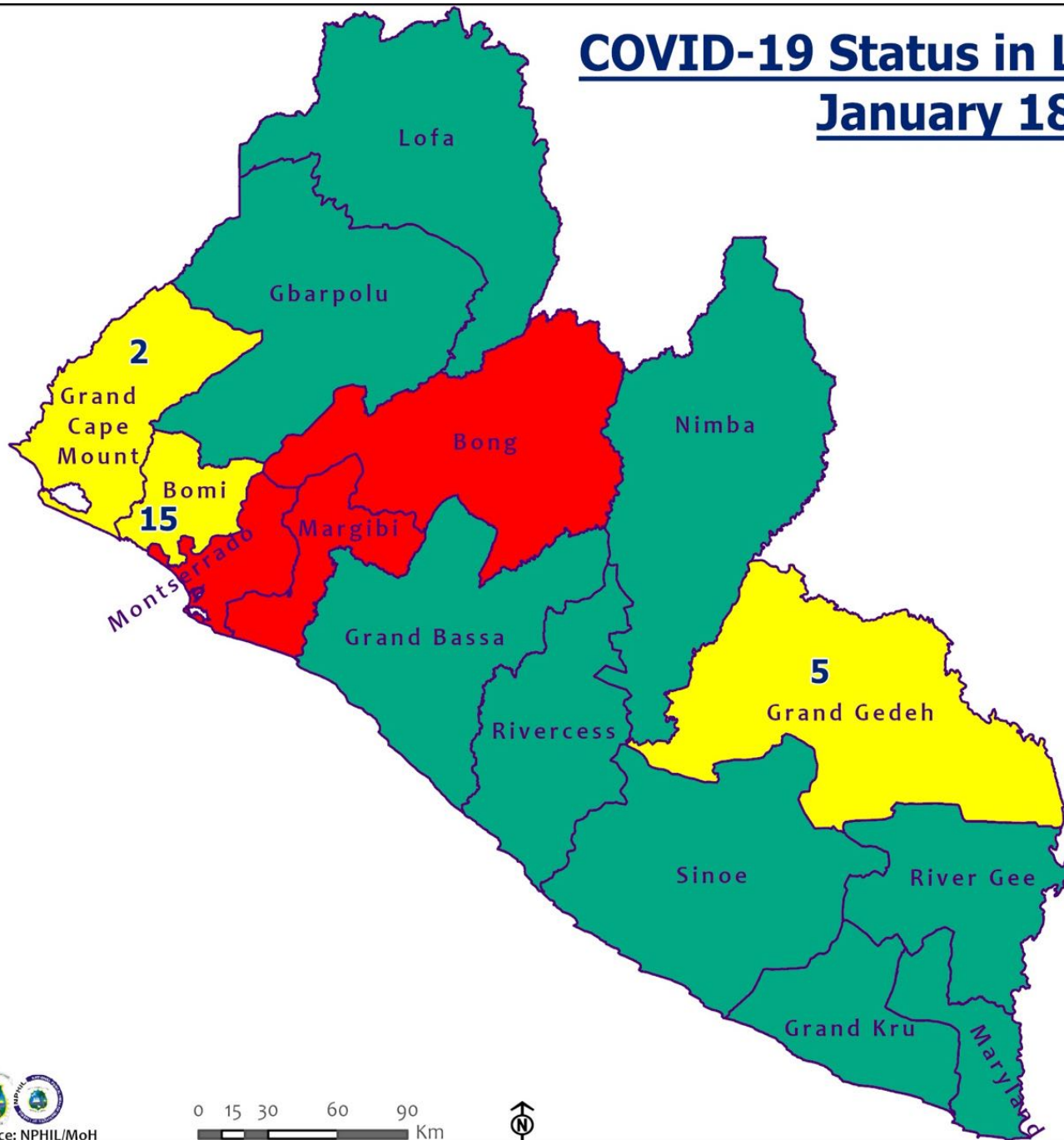
1898



■ Daily Cases
● Daily Deaths

84

COVID-19 Status in Liberia by County January 18, 2021



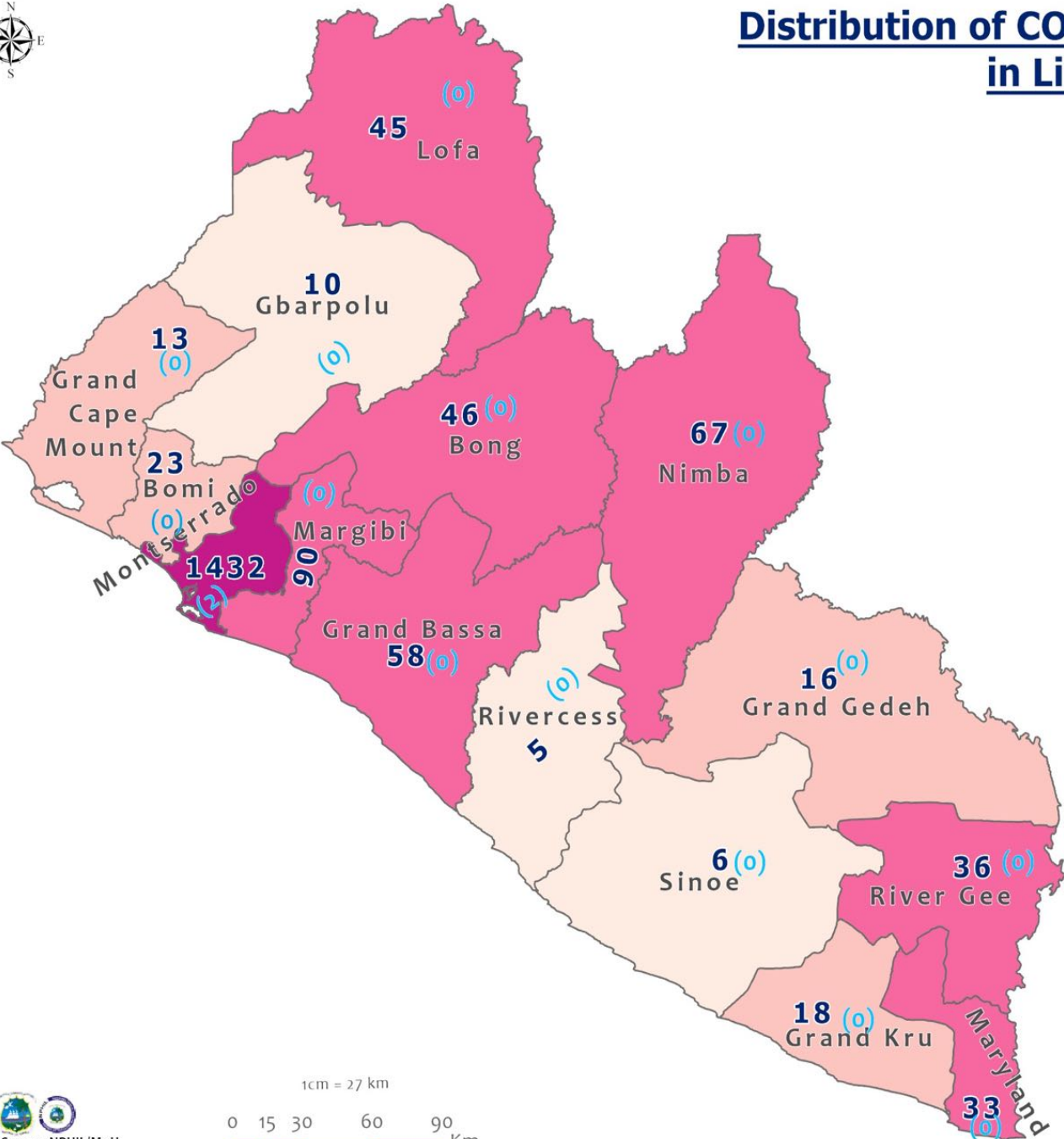
Legend

County Status

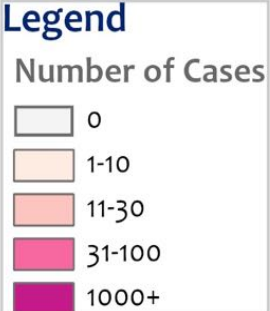
- Preparedness
- 28-Day Countdown
- Response



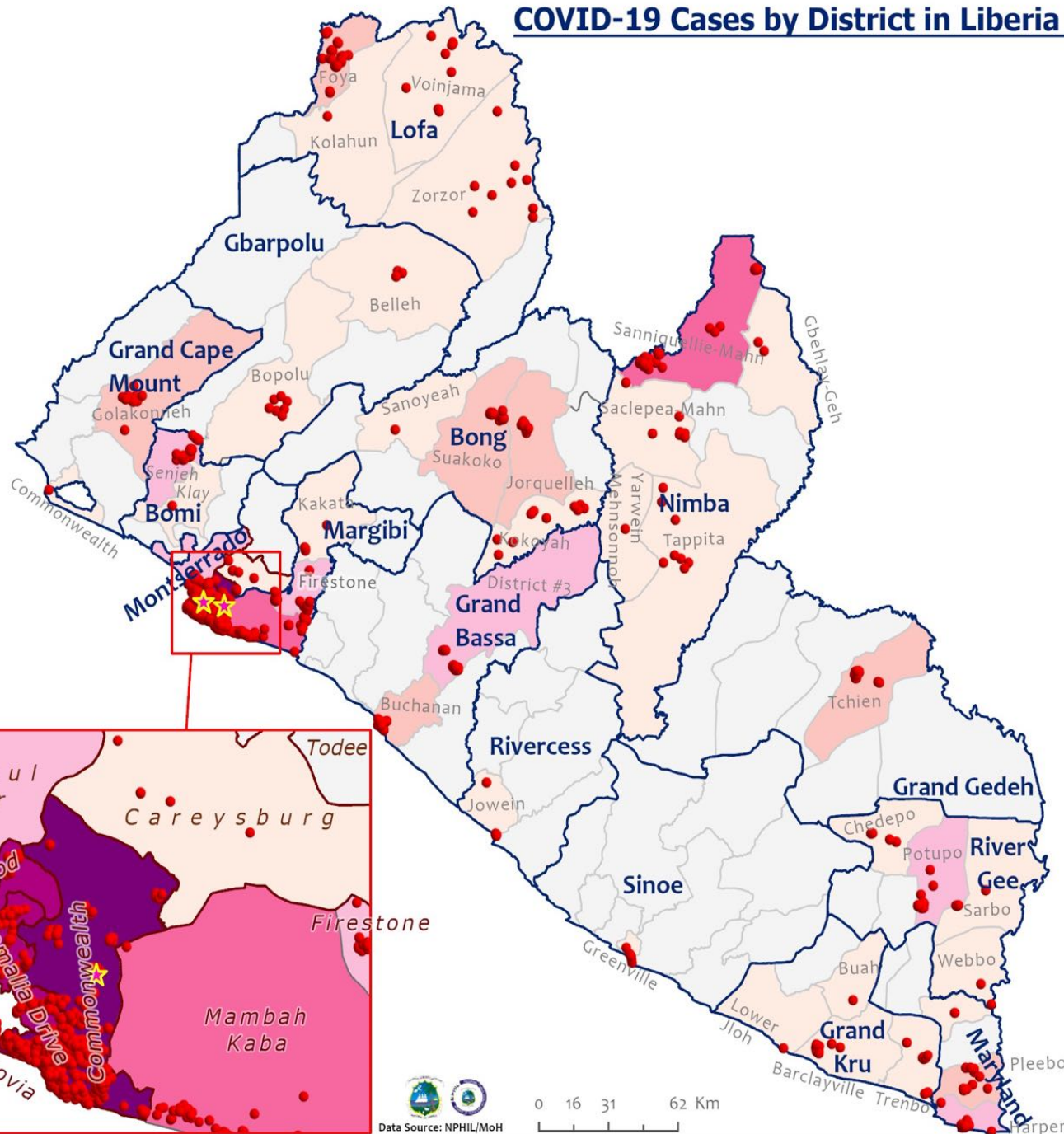
Distribution of COVID-19 Cases by County in Liberia - January 18, 2021



Total cumulative cases:
1898
 Total new cases:
2



COVID-19 Cases by District in Liberia - January 18, 2021



Total Cases: 1898

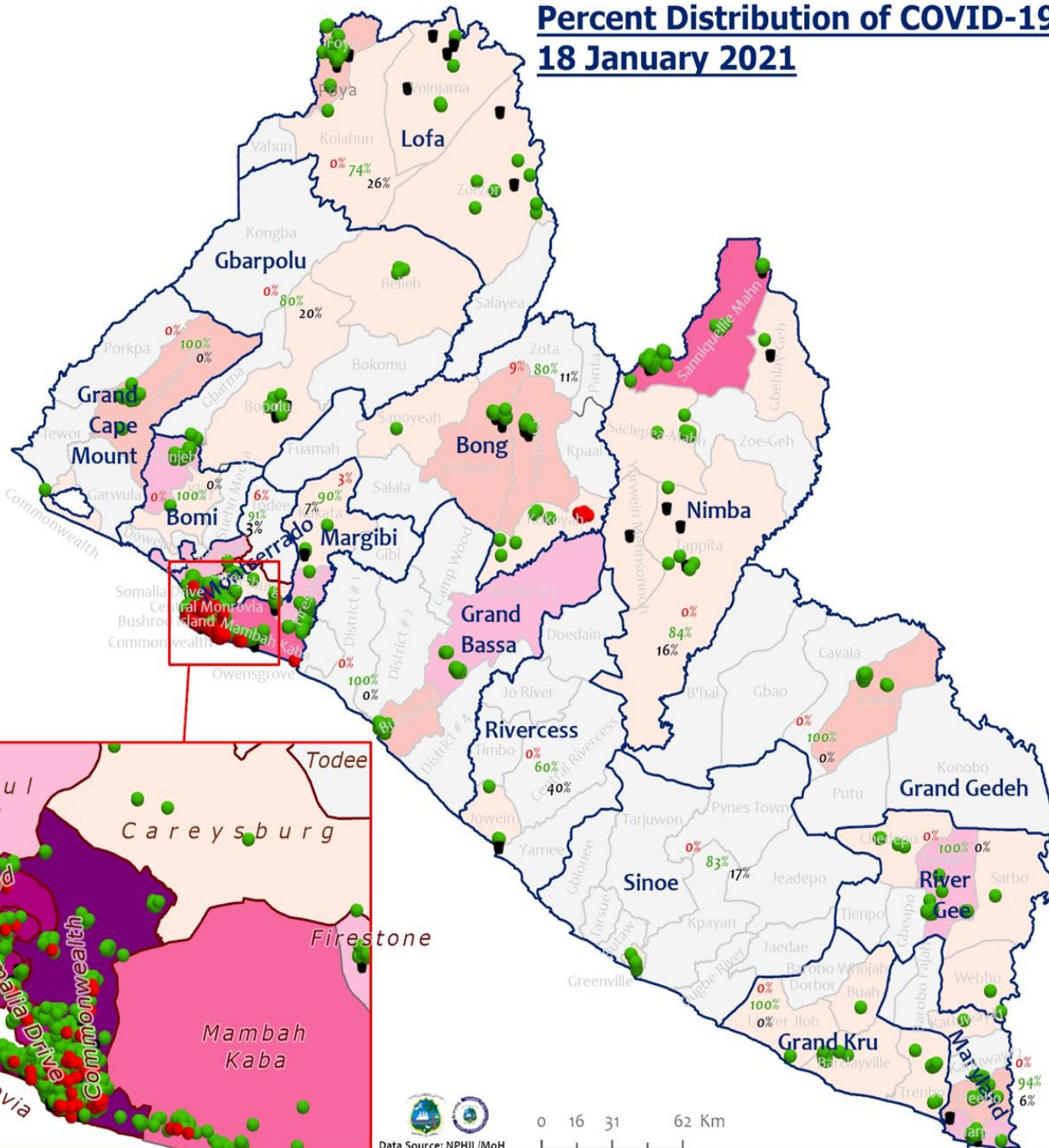
Affected Counties	Cumulative Cases
Montserrado	1432
Margibi	90
Nimba	67
Grand Bassa	58
Bong	46
Lofa	45
River Gee	36
Maryland	33
Bomi	23
Grand Kru	18
Grand Gedeh	16
Grand Cape Mount	13
Gbarpolu	10
Sinoe	6
Rivercess	5

Legend

- Case Status**
- New confirmed case
 - Confirmed cases

- Cases / District**
- 0
 - 1-10
 - 11-20
 - 21-50
 - 51-100
 - 101-200
 - 201-500

Percent Distribution of COVID-19 Cases Status, Liberia 18 January 2021



Total Cases: 1898

Affected Counties	Cumulative Cases
Montserrado	1432
Margibi	90
Nimba	67
Grand Bassa	58
Bong	46
Lofa	45
River Gee	36
Maryland	33
Bomi	23
Grand Kru	18
Grand Gedeh	16
Grand Cape	13
Gbarpolu	10
Sinoe	6
Rivercess	5

Legend

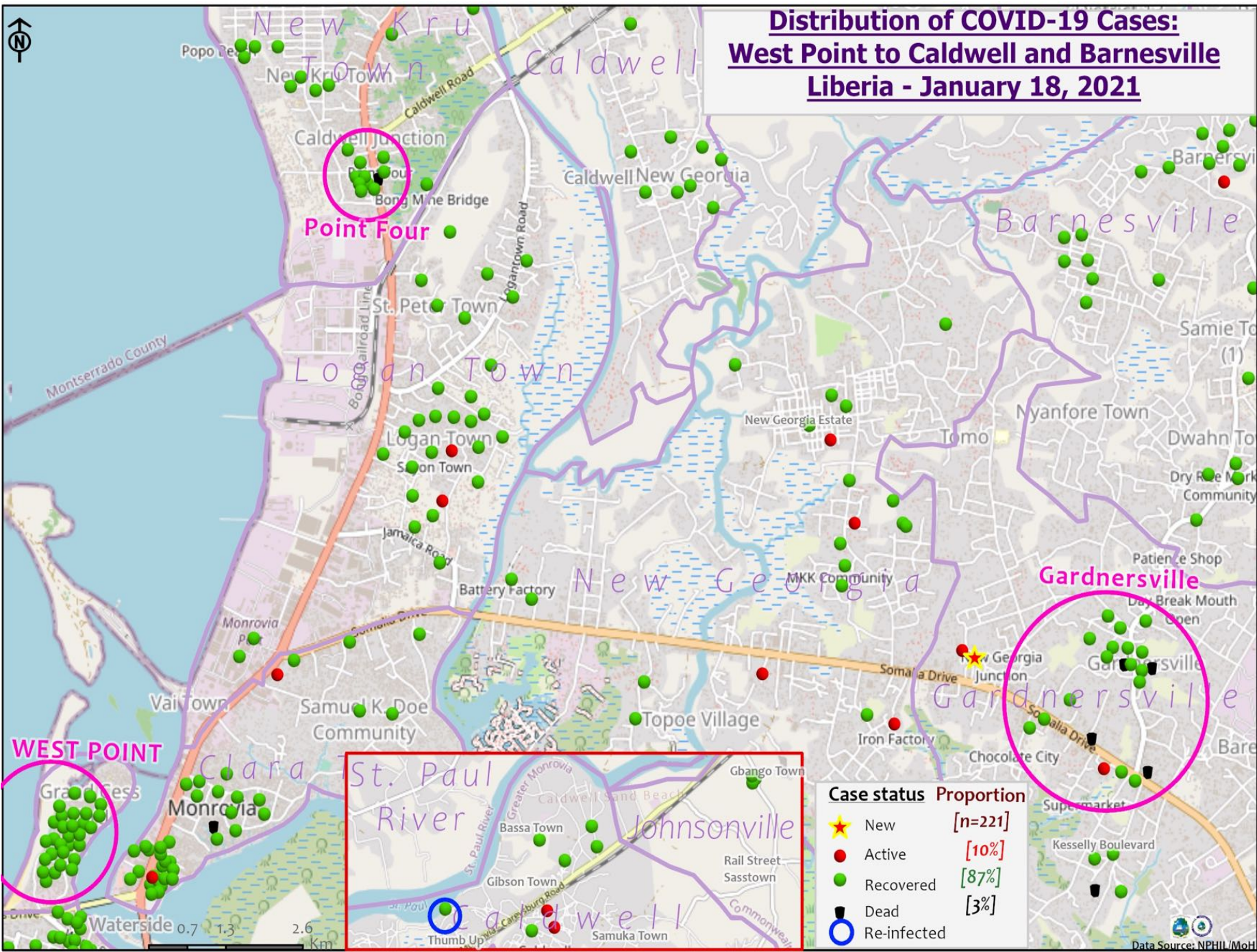
Case Status

- Active [5%]
- Recovered [91%]
- Dead [4%]

Cases / District

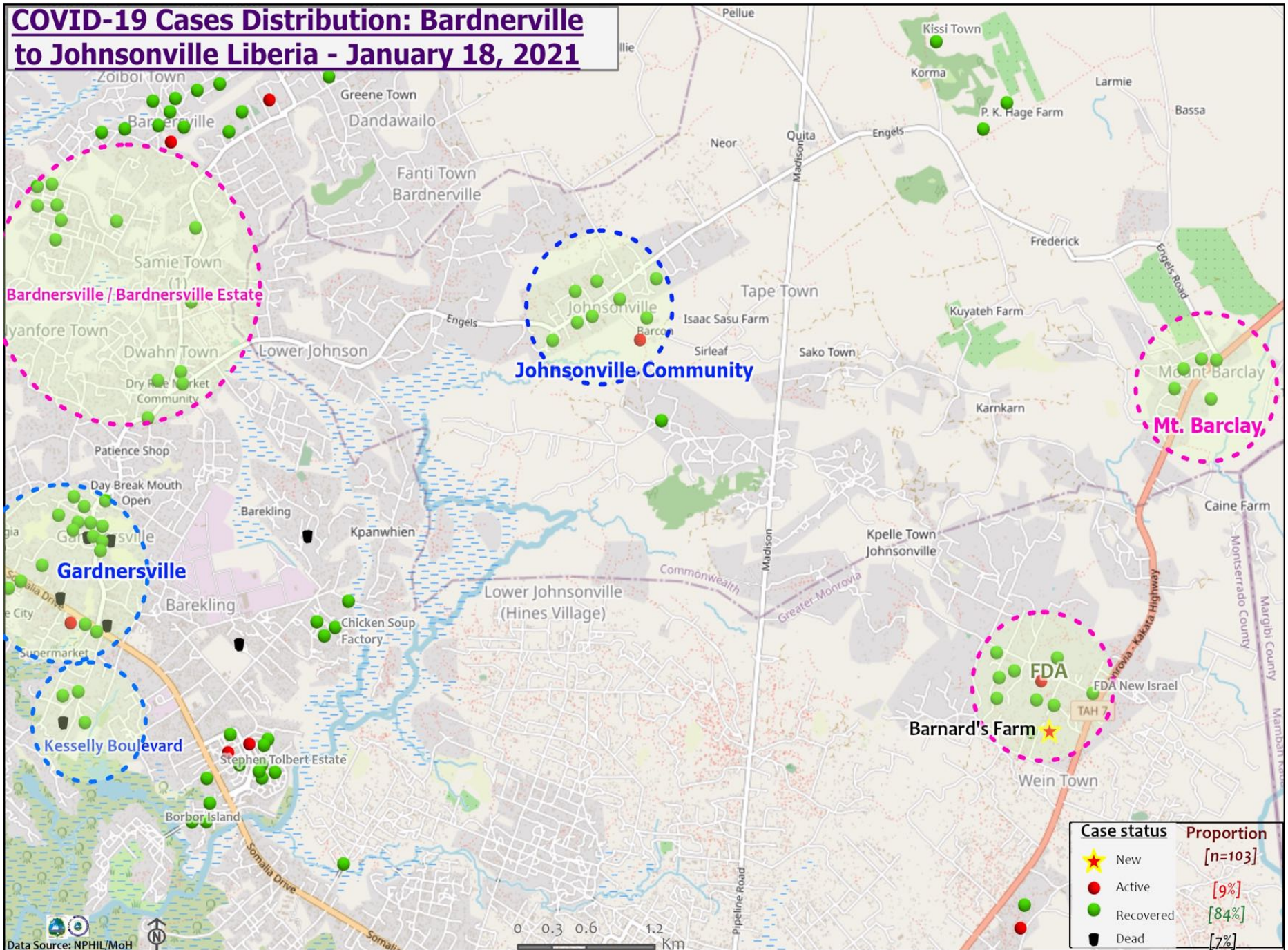
- 0
- 1-10
- 11-20
- 21-50
- 51-100
- 101-200
- 201-500

Distribution of COVID-19 Cases: West Point to Caldwell and Barnesville Liberia - January 18, 2021



Case status	Proportion
★ New	[n=221]
● Active	[10%]
● Recovered	[87%]
● Dead	[3%]
○ Re-infected	

COVID-19 Cases Distribution: Bardnerville to Johnsonville Liberia - January 18, 2021



Daily Summary Report at Treatment Units – 18 January 2021

Treatment Facility Name	New Admissions	Cumulative Admission	Daily Discharges	Cumulative Recoveries	Daily Deaths	Cumulative Deaths	Currently in treatment
Bomi LGH Treatment Unit	0	18	0	18	0	0	0
Bong Treatment Unit	0	26	0	26	0	0	0
Chief Jallahlone Hospital Treatment Unit	0	1	0	1	0	0	0
Grand Bassa Arcelor Mittal Treatment Unit	0	5	0	5	0	0	0
Grand Bassa LGH Treatment Unit	0	3	0	3	0	0	0
LAC Treatment Unit	0	42	0	42	0	0	0
14 Military Hospital Treatment Unit	0	637	0	631	0	9	2
Union Treatment Center	0	78	0	78	0	0	0
Duside Hospital Treatment Unit	0	42	0	40	0	2	0
Martha Tubman Hospital Treatment Unit	0	12	0	13	0	0	0
Rally Time Treatment Unit	0	4	0	4	0	0	0
Sasstown Treatment Unit	0	7	0	7	0	0	0
Behwan Treatment Unit	0	7	0	7	0	0	0
FJ Grante Hospital Treatment Unit	0	5	0	5	0	0	0
JJ Dossen Hospital Treatment Unit	0	9	0	9	0	0	0
Pleebo Health Center Treatment Unit	0	21	0	21	0	0	0
Tellewoyan Memorial Hospital Treatment Unit	0	13	0	13	0	0	0
Foya Borma Hospital Treatment Unit	0	12	0	12	0	0	0
Zorzor Treatment Unit	0	6	0	6	0	0	0
Robert Sport Treatment Unit	0	1	0	1	0	0	0
Ganta United Methodist Hospital Treatment Unit	0	1	0	1	0	0	0
Arcelor Mittal Yekepa Treatment Unit	0	12	0	12	0	0	0
Jackson F. Doe Treatment Unit	0	5	0	4	0	1	0
St. Frances Hospital Treatment Unit	0	2	0	2	0	0	0
Fish Town Hospital Treatment Unit	0	36	0	36	0	0	0
E&J Medical Center Treatment Unit	0	20	0	19	0	1	0
TOTAL	0	1025	0	1016	0	13	2

Home-Base Care of COVID-19 Cases

County	New Admissions	Currently in Admissions	No. Followed-up (In-person/Phone)	Cumulative Admissions	New Recoveries	Cumulative Recoveries	Referrals to TU	Cumulative Referrals to TU	New Death	Cumulative Deaths
Montserrado	0	39	26	157	0	129	0	5	0	0
Grand Cape Mount				0						
Grand Gedeh				0						
Nimba				0						
Bomi				0						
Maryland				0						
Bong				0						
Total:	0	39	26	157	0	129	0	5	0	0

Laboratory Samples Evaluated – 18 January 2021

County	Sample Evaluated	New Positive	Repeat Positive	Initial Negative	Repeat Test Negative	Pending Lab Result
Bomi	1	0	0	1	0	0
Grand Bassa	4	0	0	2	0	2
Grand Cape Mount	3	0	0	3	0	0
Margibi	12	0	0	12	0	0
Montserrado	178	2	0	170	0	6
Nimba	9	0	0	9	0	0
Sinoe	1	0	0	1	0	0
TOTAL	208	2	0	198	0	8
Outgoing Traveler	8	2	0	6	0	0
Incoming Traveler	200	0	0	192	0	8
Voluntary	0	0	0	0	0	0

Summary of COVID-19 Daily PoE in Response Counties – Jan. 18

Date of travel	Type of PoE	Point of Entry Name	Type of conveyance	# of Travelers Arrival	# of Travelers departure	# of travelers with elevated temp	Total Travelers screened		Total passengers tested	Total Foreign diplomat Exempted	Total # of fake certificate on departure	Total # of reactive on departure	# of Children under 5 years not tested	Total passports collected	Total # of Travelers	Cumulative Total	
							Male	Female									
18-Jan	Airport	RIA	Air Morac	15	26	0	35	6	41	0	0	0	0	0	41		
			Brussels	71	90	0	88	73	155	3	0	0	0	3	0	161	
			AWA	0	0	0	0	0	0	0	0	0	0	0	0	0	
			Air France	12	40	0	31	21	52	0	2	0	0	0	0	52	
			Air Cote D'Ivoire	20	0	0	17	3	19	1	0	0	0	0	0	20	
			DHL	0	0	0	0	0	0	0	0	0	0	0	0	0	
			Kenya	95	87	0	105	77	176	3	1	0	0	3	0	182	
			Asky	62	0	0	44	18	58	2	0	0	0	2	0	62	
			Others	0	0	0	0	0	0	0	0	0	0	0	0	0	
	James Spriggs Payne Airport	0	0	0	0	0	0	0	0	0	0	0	0	0			
	Bo Water Side	Land	0	0	0	0	0	0	0	0	0	0	0	0	0		
	Buchanan	Vessel	0	0	0	0	0	0	0	0	0	0	0	0			
Seaport	Freeport of Monrovia	Vessel	0	0	0	0	0	0	0	0	0	0	0	0			
Total:				275	243	0	320	198	501	9	3	0	8	0	518	518	

Summary of COVID-19 Contact Tracing in Response Counties

County	New Contacts Line listed	Cumulative Contacts	No. of Health Care Workers as Contacts	Cumulative no. of Health Care Workers as contacts	Contacts became a case	Cumulative contacts that became a case	Contacts Completed 14 Days	Cumulative Contacts Completing 14 Days	Contacts Under Follow-up	Contacts lost to Follow-up
Montserratado	0	5426	0	508	0	189	0	5339	11	3
Margibi	0	480	0	125	0	42	0	470	10	0
Grand Bassa	0	457	0	140	0	51	0	407	0	0
Sinoe	0	191	0	30	0	1	0	191	0	0
Lofa	0	758	0	103	0	34	0	726	0	0
Nimba	0	613	0	53	0	25	0	550	0	0
Bong	0	302	0	70	0	28	0	300	13	0
Gbarpolu	0	87	0	13	0	8	0	87	0	0
Grand Cape Mount	0	49	0	3	0	4	0	51	0	0
RiverGee	0	123	0	13	0	30	0	123	0	0
Maryland	0	208	0	28	0	19	0	136	0	0
Bomi	0	180	0	17	0	15	0	177	0	0
Rivercess	0	102	0	55	0	0	0	88	0	0
Grand Kru	0	333	0	131	0	17	0	330	0	0
Grand Gedeh	0	163	0	49	0	6	0	125	0	0
National	0	9472	0	1338	0	469	0	9100	34	3

Thank you for Listening