



# **Liberia COVID-19 Daily Sitrep 299 (8<sup>th</sup> January 2021)**

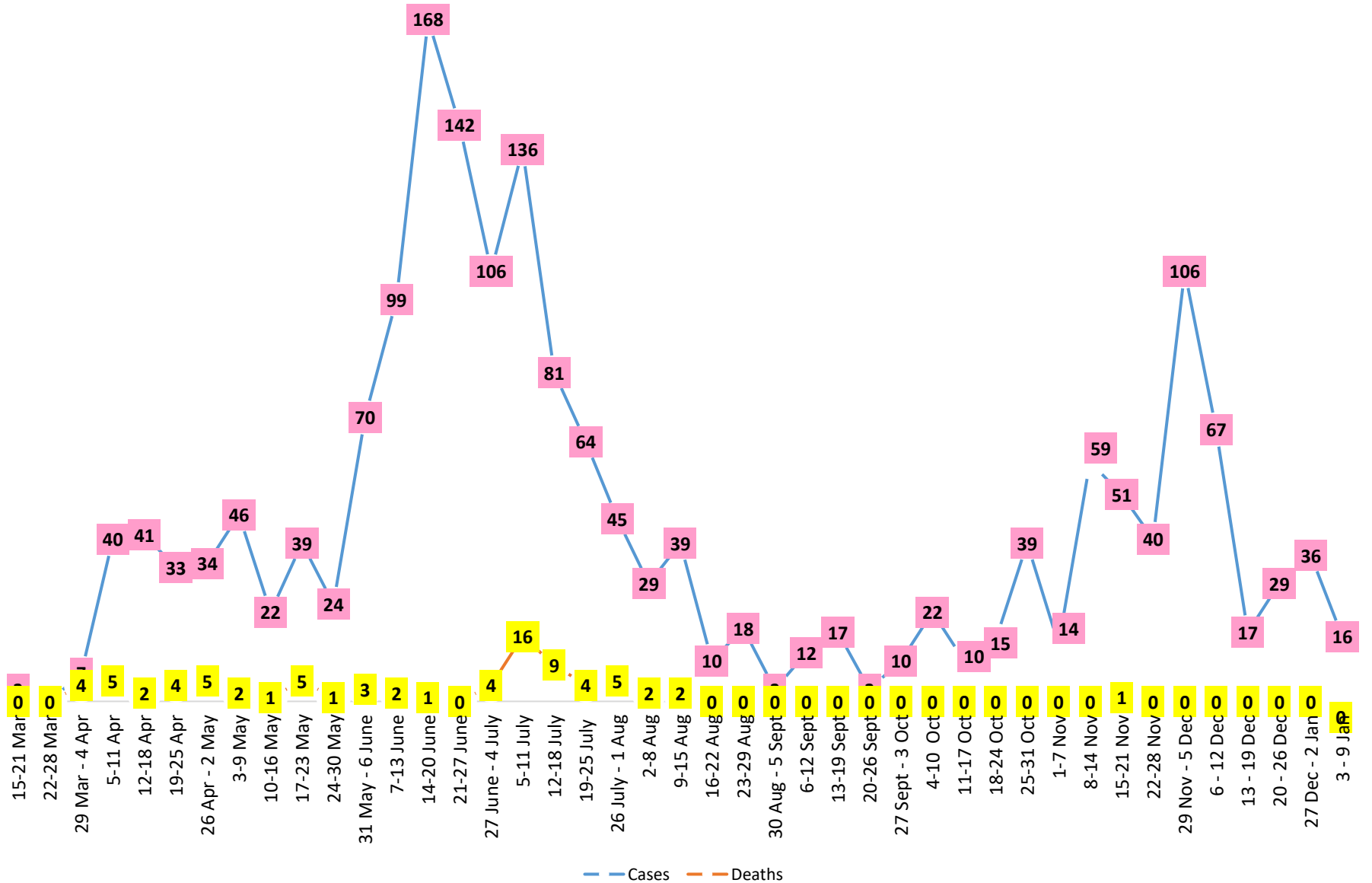
# Summary of COVID-19 Cases by Reporting County, Liberia, 16 March 2020 – 8 January 2021

County	Laboratory Confirmed Cases	Confirmed Cases on Contact List	Confirmed Cumulative Cases
<b>Bomi</b>	0	0	23
<b>Bong</b>	0	0	45
<b>Gbarpolu</b>	0	0	10
<b>Grand Bassa</b>	0	0	58
<b>Grand Cape Mount</b>	0	0	13
<b>Grand Kru</b>	0	0	18
<b>Grand Gedeh</b>	0	0	16
<b>Lofa</b>	0	0	45
<b>Margibi</b>	2	0	89
<b>Maryland</b>	0	0	33
<b>Montserrado</b>	<b>10</b>	<b>0</b>	<b>1398</b>
<b>Nimba</b>	0	0	67
<b>Rivercess</b>	0	0	5
<b>River Gee</b>	0	0	36
<b>Sinoe</b>	0	0	6
<b>NATIONAL</b>	<b>12</b>	<b>0</b>	<b>1862</b>

# Demographic Breakdown (Gender & Age) of Confirmed COVID-19 Cases (16 March 2020 – 8 January 2021)

County	<15 years		15 - 34		35 - 54		55+		All ages		Total Confirmed
	M	F	M	F	M	F	M	F	M	F	
Bomi	2	2	3	5	7	3	0	1	12	11	23
Bong	3	1	3	6	14	7	8	3	25	17	45
Gbarpolu	1	2	0	2	3	1	1	0	5	5	10
Grand Bassa	11	2	9	11	12	8	3	2	35	23	58
Grand Cape Mount	0	0	9	0	3	0	1	0	13	0	13
Grand Kru	0	0	2	5	4	5	2	0	8	10	18
Grand Gedeh	0	1	1	2	7	3	2	0	10	6	16
Lofa	3	3	8	3	13	5	8	2	32	13	45
Margibi	6	4	14	12	24	10	12	7	56	33	89
Maryland	2	0	9	6	9	4	1	2	21	12	33
<b>Montserrado</b>	49	46	344	194	379	164	150	68	925	473	1398
Nimba	1	4	14	8	26	6	5	3	46	21	67
Rivercess	0	0	2	3	0	0	0	0	2	3	5
River Gee	0	0	4	3	19	5	5	0	28	8	36
Sinoe	0	0	1	0	4	1	0	0	5	1	6
<b>National</b>	<b>78</b>	<b>65</b>	<b>423</b>	<b>260</b>	<b>524</b>	<b>222</b>	<b>198</b>	<b>88</b>	<b>1223</b>	<b>636</b>	<b>1862</b>

# COVID-19 WEEKLY EPI-CURVE



# Summary of COVID-19 Deaths by Reporting County, Liberia, 16 March 2020 – 8 January 2021

County	DAILY REPORT								Cumulative Deaths
	New Suspected Deaths	Laboratory Confirmed Deaths						Confirmed Deaths on Contact List	
		COVID-19 Treatment Unit	Total in COVID-19 Treatment Unit	Health Facility	Total in Health Facility	Community	Total in Community		
Bomi	0	0	0	0	1	0	0	0	1
Bong	0	0	0	0	4	0	1	0	5
Gbarpolu	0	0	0	0	2	0	0	0	2
Grand Bassa	0	0	0	0	0	0	0	0	0
Grand Cape Mount	0	0	0	0	0	0	0	0	0
Grand Gedeh	0	0	0	0	0	0	0	0	0
Grand Kru	0	0	0	0	0	0	0	0	0
Lofa	0	0	0	0	6	0	5	0	11
Maryland	0	0	0	0	2	0	0	0	2
Margibi	0	0	2	0	4	0	0	0	6
Montserrado	0	0	9	0	19	0	16	0	43
Nimba	0	0	2	0	5	0	4	0	11
Rivercess	0	0	0	0	1	0	1	0	2

**The Liberia Case Fatality rate (CFR) officially considered is for deaths that occurred among patients in care at the COVID-19 treatment units across the country. As of 30 December 2020 , a total of 13 deaths have been recorded CFR=1.3%. The country is however keeping active surveillance on community deaths and deaths in non COVID-19 treatment health units.**

# Daily and Cumulative Healthcare Worker (HCW) COVID-19 Cases and Deaths by County, Liberia, 16 March 2020 – 8 January 2021

County	DAILY REPORT						CUMULATIVE CASES (ALIVE & DEAD)	
	New Suspected & High Risk Cases (Alive)			New Suspect Death	Laboratory Confirmed Cases	Confirmed Cases on Contact List	Confirmed	Deaths
	Suspect	High Risk	Total					
<b>Bomi</b>	0	0	0	0	0	0	5	0
<b>Bong</b>	0	0	0	0	0	0	19	3
<b>Gbarpolu</b>	0	0	0	0	0	0	1	0
<b>Grand Bassa</b>	0	0	0	0	0	0	21	0
<b>Grand Gedeh</b>	0	0	0	0	0	0	2	0
<b>Grand Kru</b>	0	0	0	0	0	0	14	0
<b>Lofa</b>	0	0	0	0	0	0	16	0
<b>Margibi</b>	0	0	0	0	0	0	12	1
<b>Maryland</b>	0	0	0	0	0	0	16	0
<b>Montserrado</b>	0	0	0	0	0	0	86	1
<b>Nimba</b>	0	0	0	0	0	0	14	0
<b>Rivercess</b>	0	0	0	0	0	0	3	0
<b>River Gee</b>	0	0	0	0	0	0	10	0
<b>Sinoe</b>	0	0	0	0	0	0	3	0
<b>NATIONAL</b>	<b>0</b>	<b>0</b>	<b>0</b>	<b>0</b>	<b>0</b>	<b>0</b>	<b>222</b>	<b>5</b>

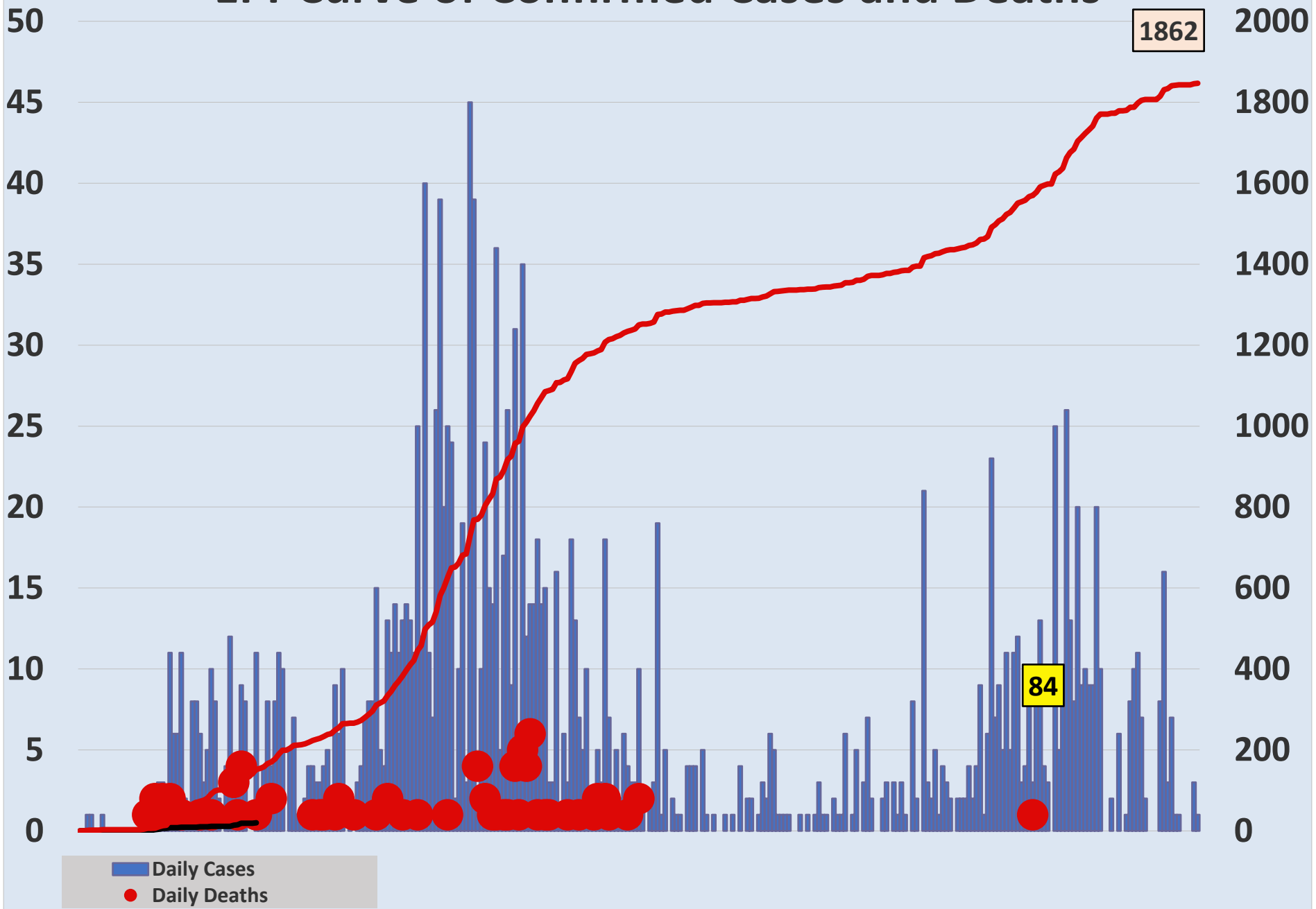
# Cadre Cases and Deaths by Health Care Workers (16 March 2020 – 8 January 2021)

Health Care Worker Cadre	Montserratado		Margibi		Nimba		River Gee		Sinoe		Grand Kru		Gbarpolu		Bong		Lofa		Grand Bassa		Maryland		Bomi		Rivercess		Grand Gedeh		National (Total)	
	Cases	Deaths	Cases	Deaths	Cases	Deaths	Cases	Deaths	Cases	Deaths	Cases	Deaths	Cases	Deaths	Cases	Deaths	Cases	Deaths	Cases	Deaths	Cases	Deaths	Cases	Deaths	Cases	Deaths	Cases	Deaths	Cases	Deaths
Doctors	17	0	1	0	0	0	1	0	0	0	0	0	0	0	1	0	0	0	1	0	0	0	0	0	0	0	0	21	0	
Pharmacists	4	0	0	0	0	0	0	0	0	0	0	0	0	0	0	0	0	0	0	0	0	0	0	0	0	0	4	0		
Nurses	22	1	2	0	2	0	5	0	0	0	2	0	1	1	12	1	8	0	5	0	1	0	1	0	0	0	61	3		
Nurse Aid	0	0	0	0	2	0	0	0	0	0	4	0	0	0	0	0	0	8	0	2	0	0	0	0	0	0	16	0		
Midwife	0	0	0	0	0	0	1	0	0	0	1	0	0	0	1	0	1	0	1	0	0	0	0	0	0	0	5	0		
Physician Assistants	8	0	1	0	1	0	1	0	0	0	1	0	0	0	0	0	1	0	1	0	0	0	0	0	0	0	14	0		
Lab Technician	9	0	1	0	2	0	0	0	1	0	1	0	0	0	0	0	2	0	0	0	10	0	0	0	3	0	29	0		
Environmental Health Technicians	5	0	0	0	0	0	0	0	0	0	0	0	0	0	0	0	0	0	0	0	0	0	0	0	0	0	5	0		
Dieticians	0	0	7	1	0	0	0	0	0	0	0	0	0	0	0	0	0	0	0	0	0	0	0	0	0	0	7	1		
Hospital Cleaner	1	0	0	0	0	0	0	0	0	0	1	0	0	0	1	0	0	0	1	0	2	0	0	0	0	0	6	0		
Others*	20	0	0	0	7	0	2	0	2	0	4	0	0	0	4	1	4	0	4	0	1	0	4	0	2	0	54	1		
<b>Total:</b>	<b>86</b>	<b>1</b>	<b>12</b>	<b>1</b>	<b>14</b>	<b>0</b>	<b>10</b>	<b>0</b>	<b>3</b>	<b>0</b>	<b>14</b>	<b>0</b>	<b>1</b>	<b>1</b>	<b>19</b>	<b>2</b>	<b>16</b>	<b>0</b>	<b>21</b>	<b>0</b>	<b>16</b>	<b>0</b>	<b>5</b>	<b>0</b>	<b>3</b>	<b>0</b>	<b>2</b>	<b>0</b>	<b>222</b>	<b>5</b>

**\*Others include the following:**

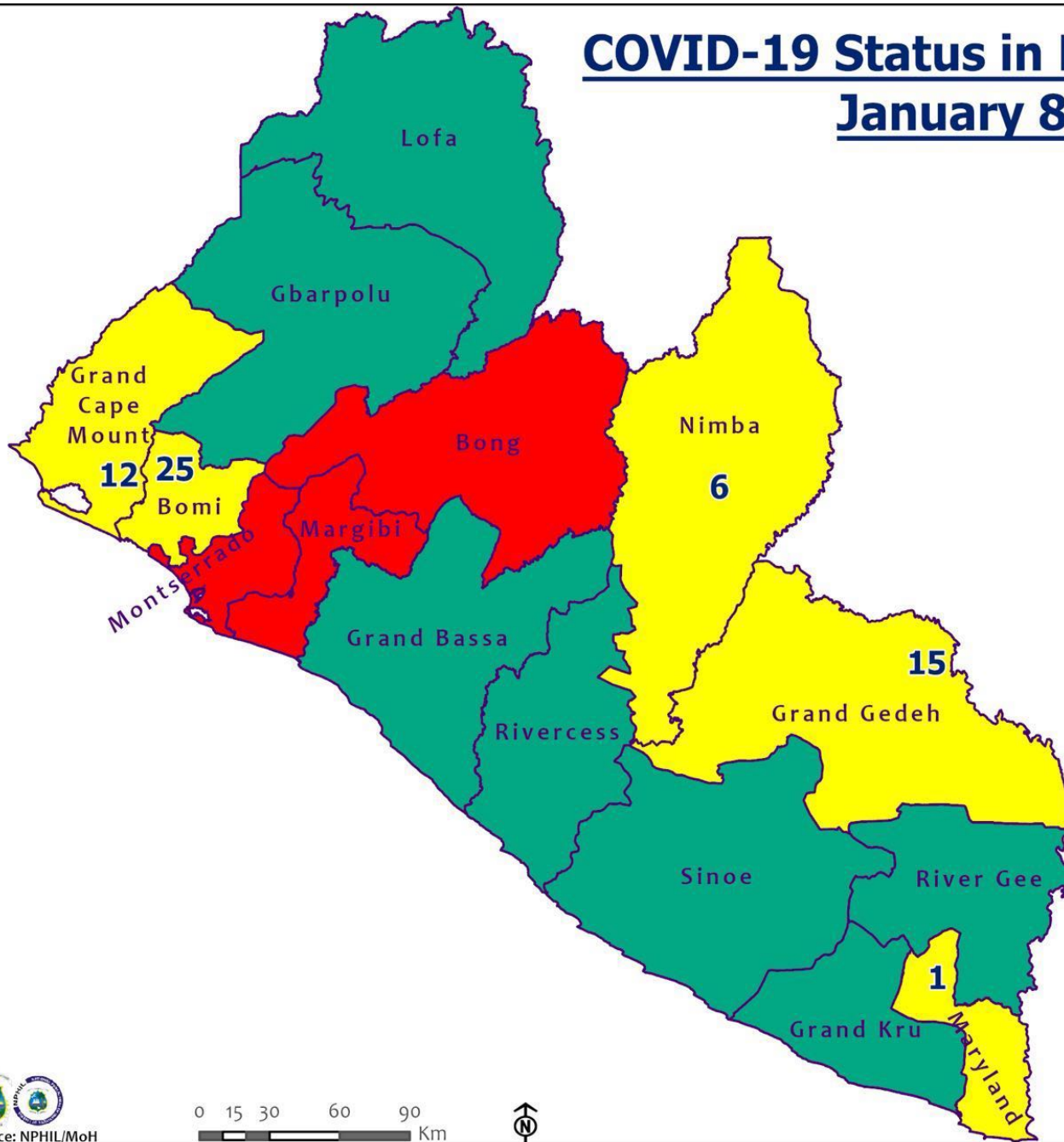
***Radiologist, Microbiologist, Epidemiologist, Dispenser, Licensed Practical Nurse, Psychosocial worker, Hygienist, Logistician, Vaccinator, Ambulance Driver, Procurement Officer, Registrar, Accountant, Secretary, Hospital Administrator, Community Health Volunteer, GIS Specialist, EOC Coordinator***

# EPI-Curve of Confirmed Cases and Deaths





# COVID-19 Status in Liberia by County January 8, 2021



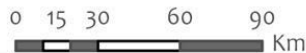
**Legend**

**County Status**

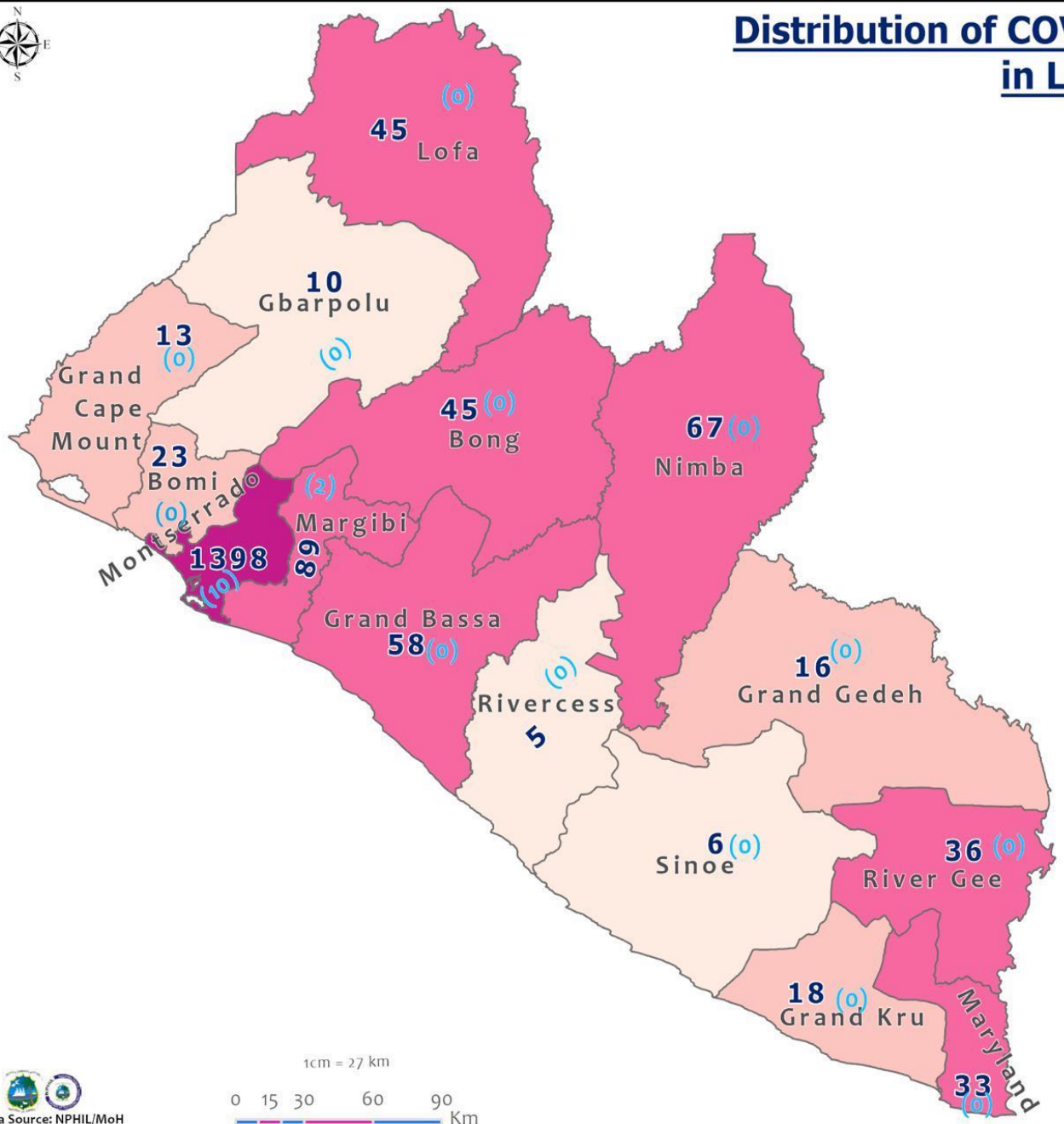
- Preparedness
- 28-Day Countdown
- Response



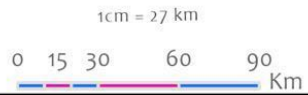
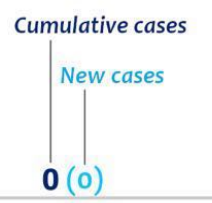
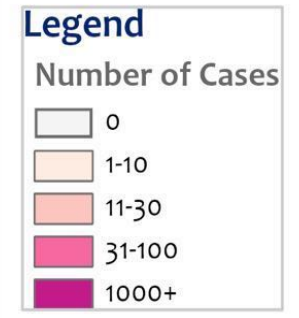
Data Source: NPHIL/MoH



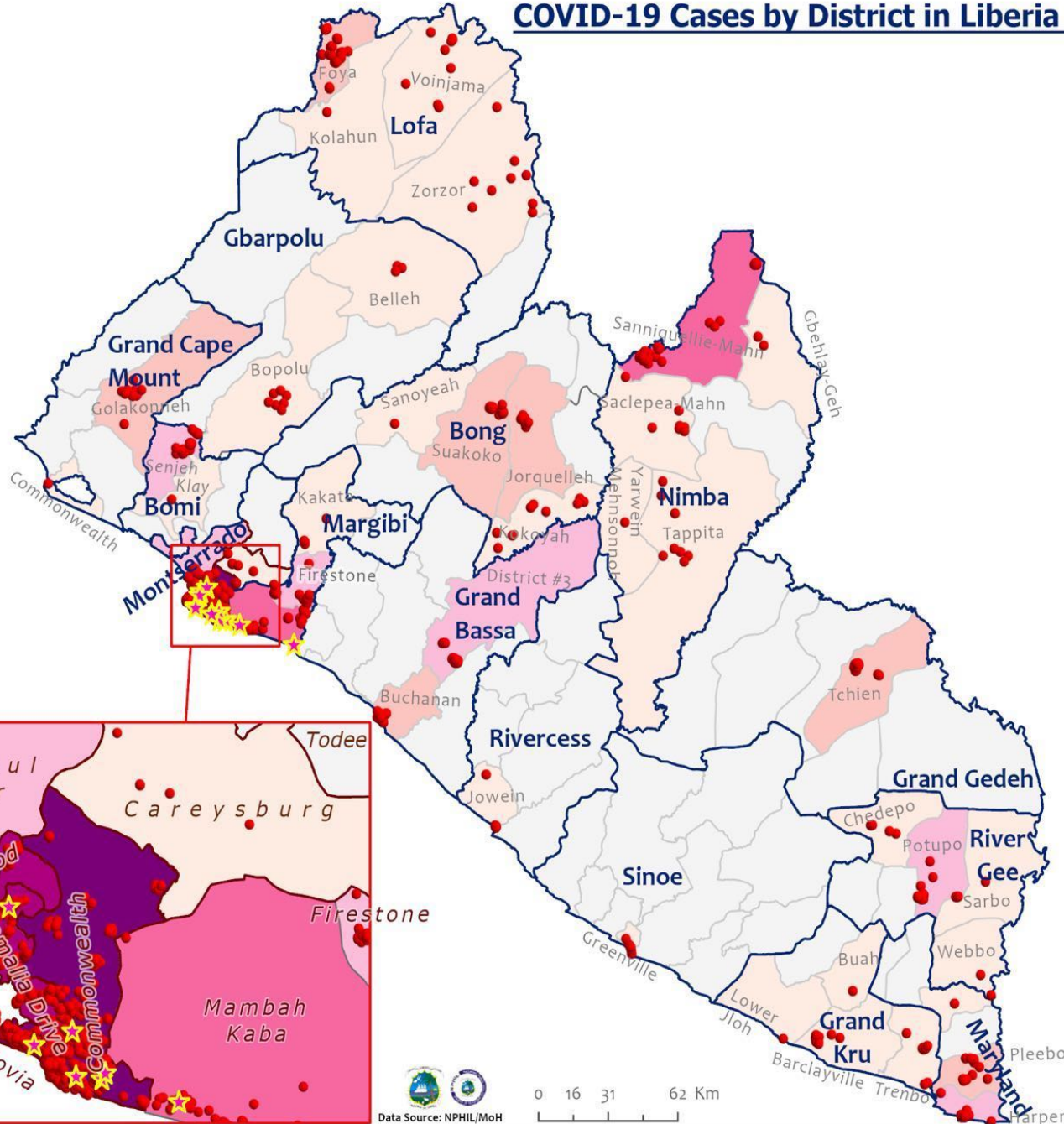
# Distribution of COVID-19 Cases by County in Liberia - January 8, 2021



Total cumulative cases:  
**1862**  
 Total new cases:  
**12**



# COVID-19 Cases by District in Liberia - January 8, 2021



**Total Cases: 1862**

Affected Counties	Cumulative Cases
Montserrado	1398
Margibi	89
Nimba	67
Grand Bassa	58
Lofa	45
Bong	45
River Gee	36
Maryland	33
Bomi	23
Grand Kru	18
Grand Gedeh	16
Grand Cape	13
Mount	10
Sinoe	6
Rivercess	5

## Legend

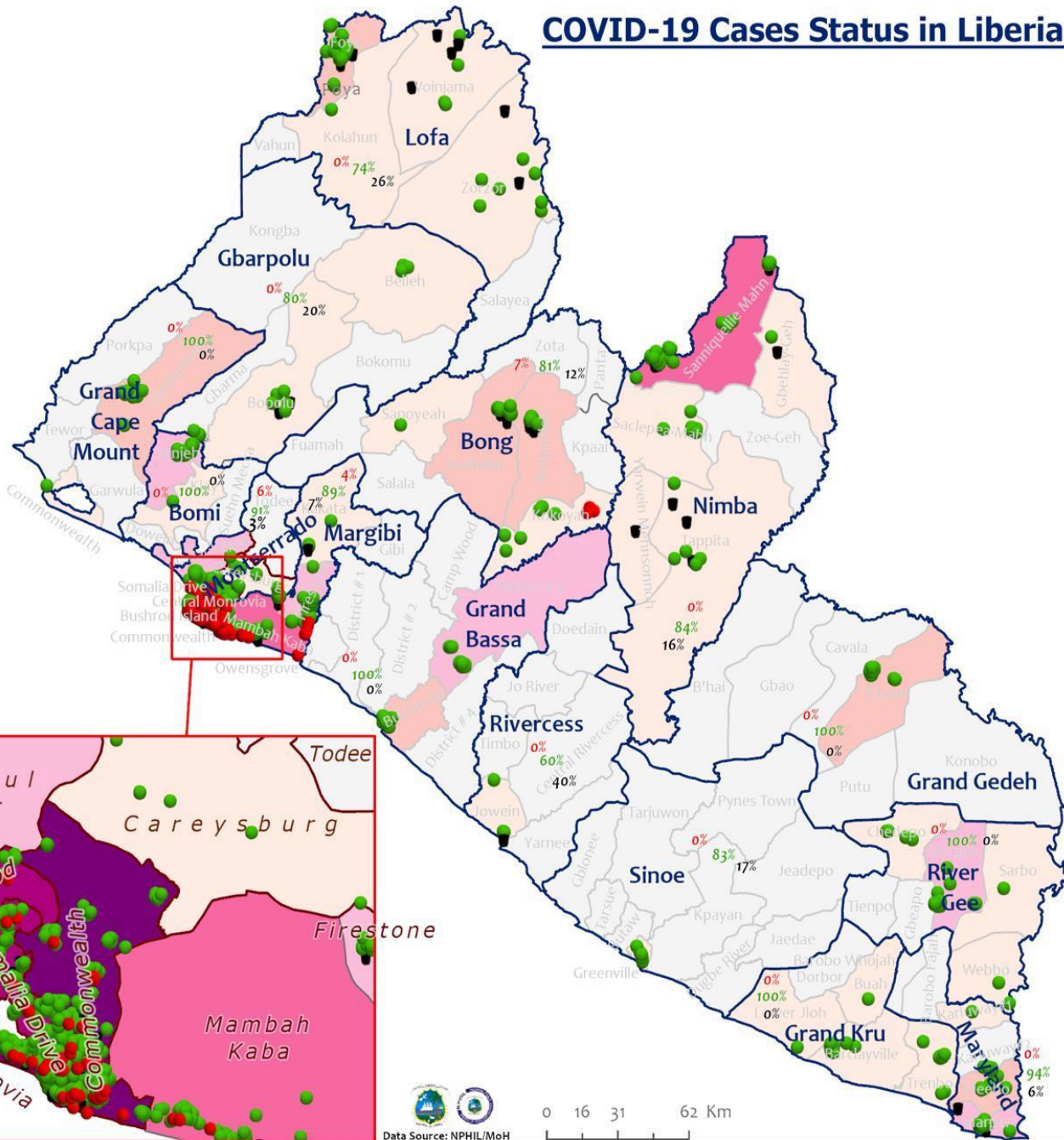
### Case Status

- ★ New confirmed case
- Confirmed cases

### Cases / District

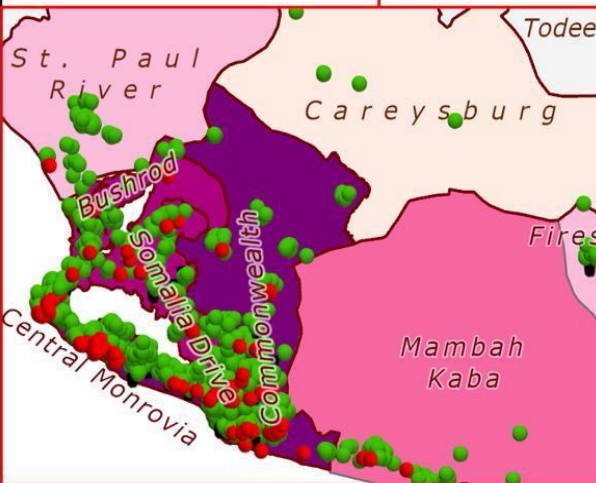
- 0
- 1-10
- 11-20
- 21-50
- 51-100
- 101-200
- 201-500

# COVID-19 Cases Status in Liberia - 8 January 2021



**Total Cases: 1862**

Affected Counties	Cumulative Cases
Montserrado	1398
Margibi	89
Nimba	67
Grand Bassa	58
Lofa	45
Bong	45
River Gee	36
Maryland	33
Bomi	23
Grand Kru	18
Grand Gedeh	16
Grand Cape	13
Mount	10
Gbarpolu	10
Sinoe	6
Rivercess	5



**Legend**

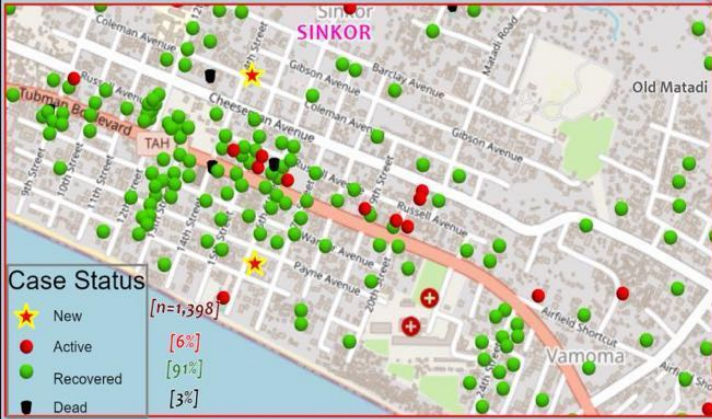
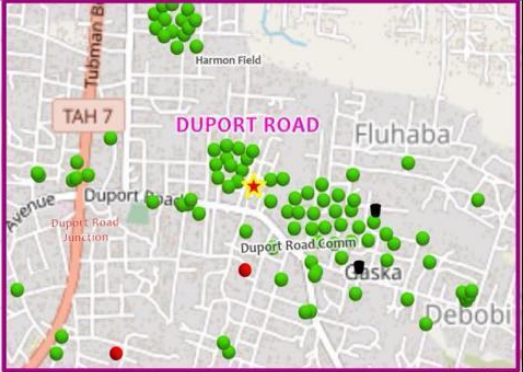
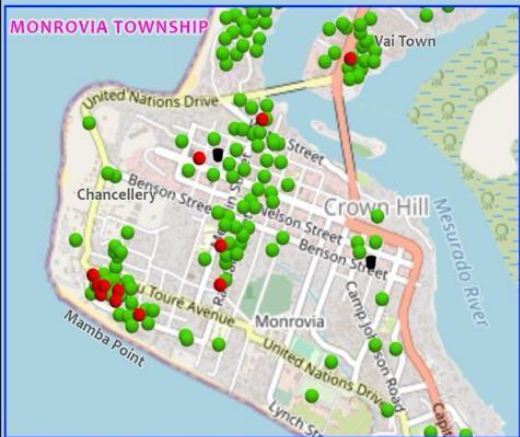
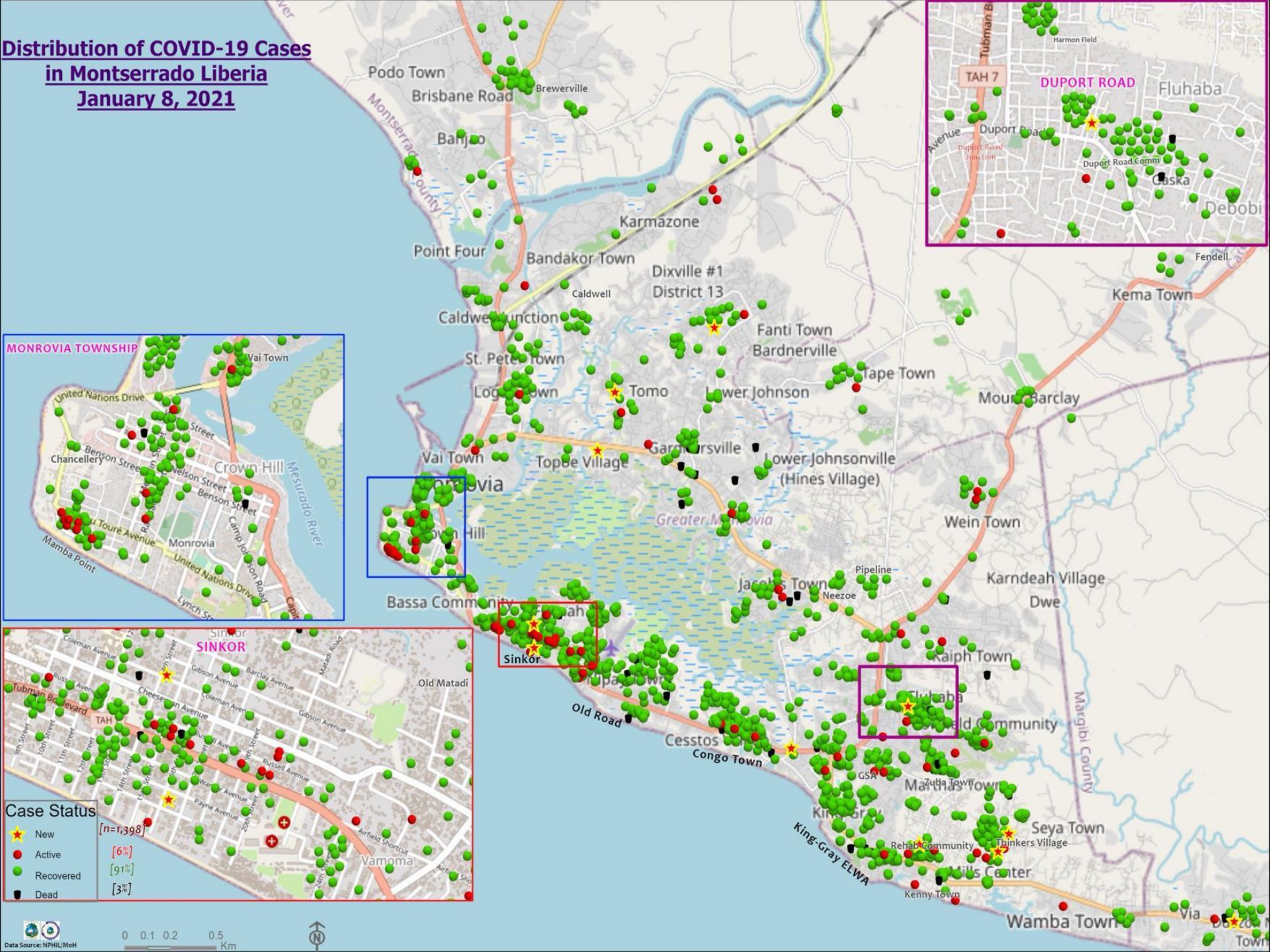
**Case Status**

- Active [5%]
- Recovered [91%]
- Dead [4%]

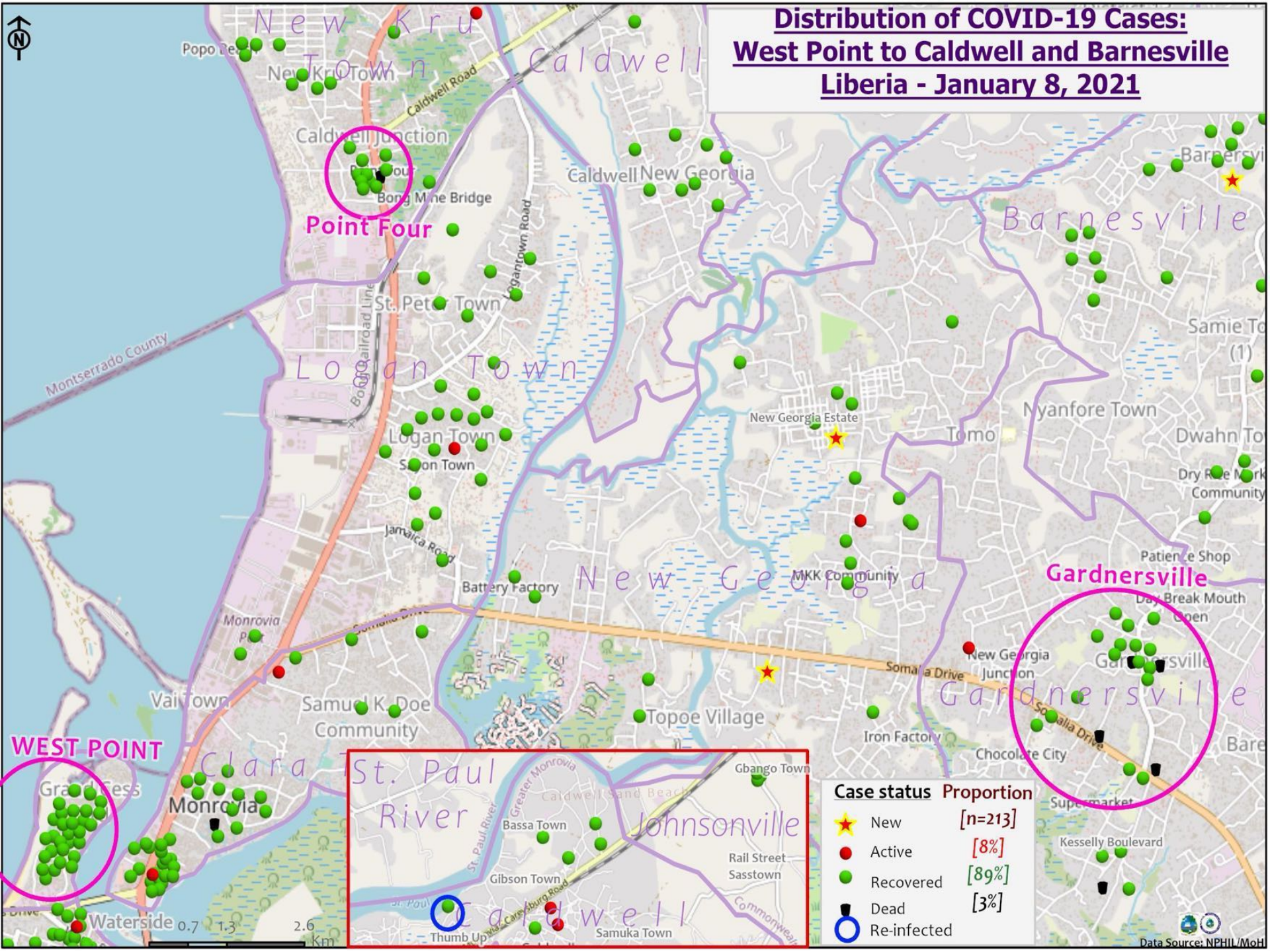
**Cases / District**

- 0
- 1-10
- 11-20
- 21-50
- 51-100
- 101-200
- 201-500

# Distribution of COVID-19 Cases in Montserrato Liberia January 8, 2021

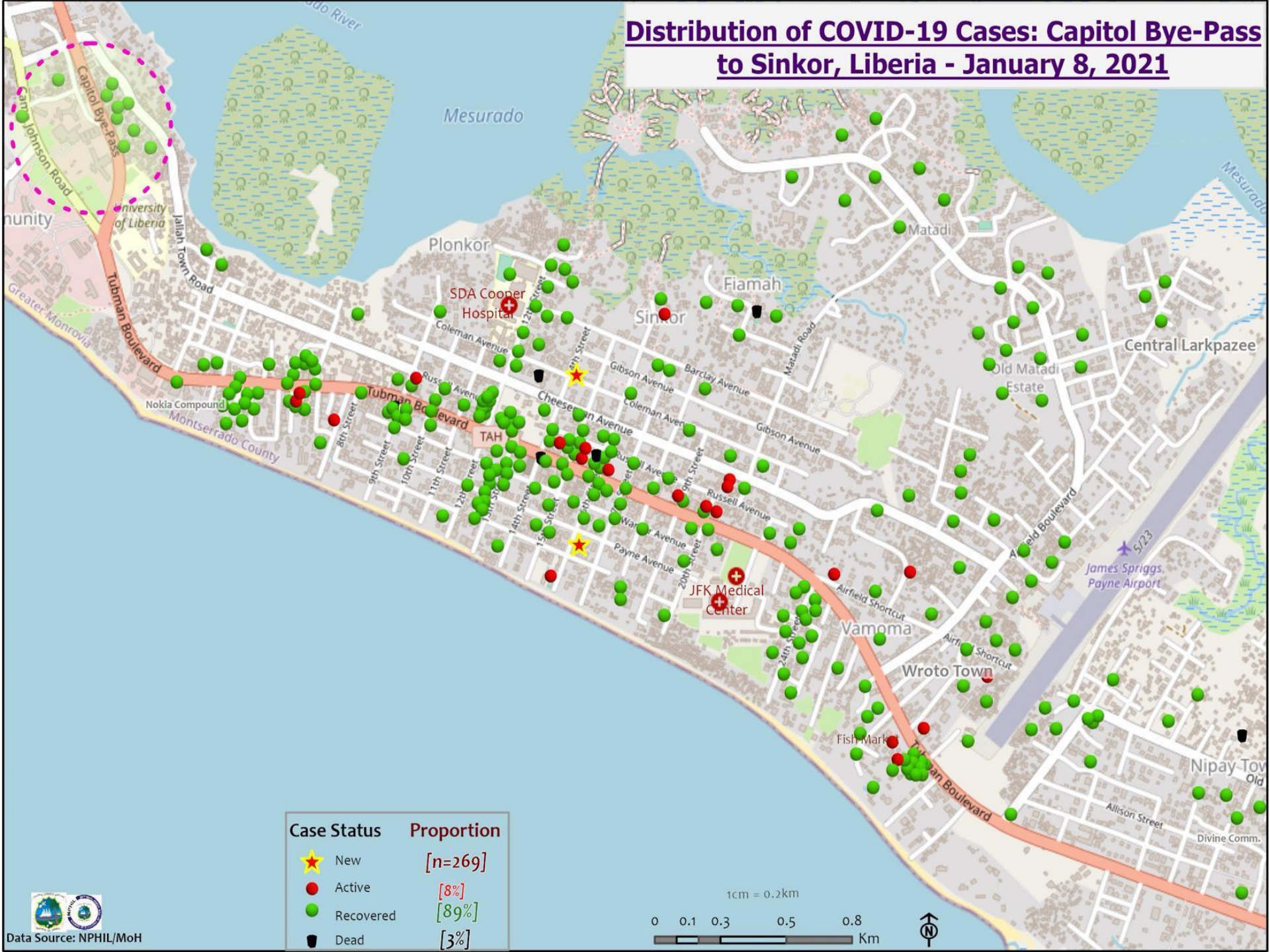


# Distribution of COVID-19 Cases: West Point to Caldwell and Barnesville Liberia - January 8, 2021

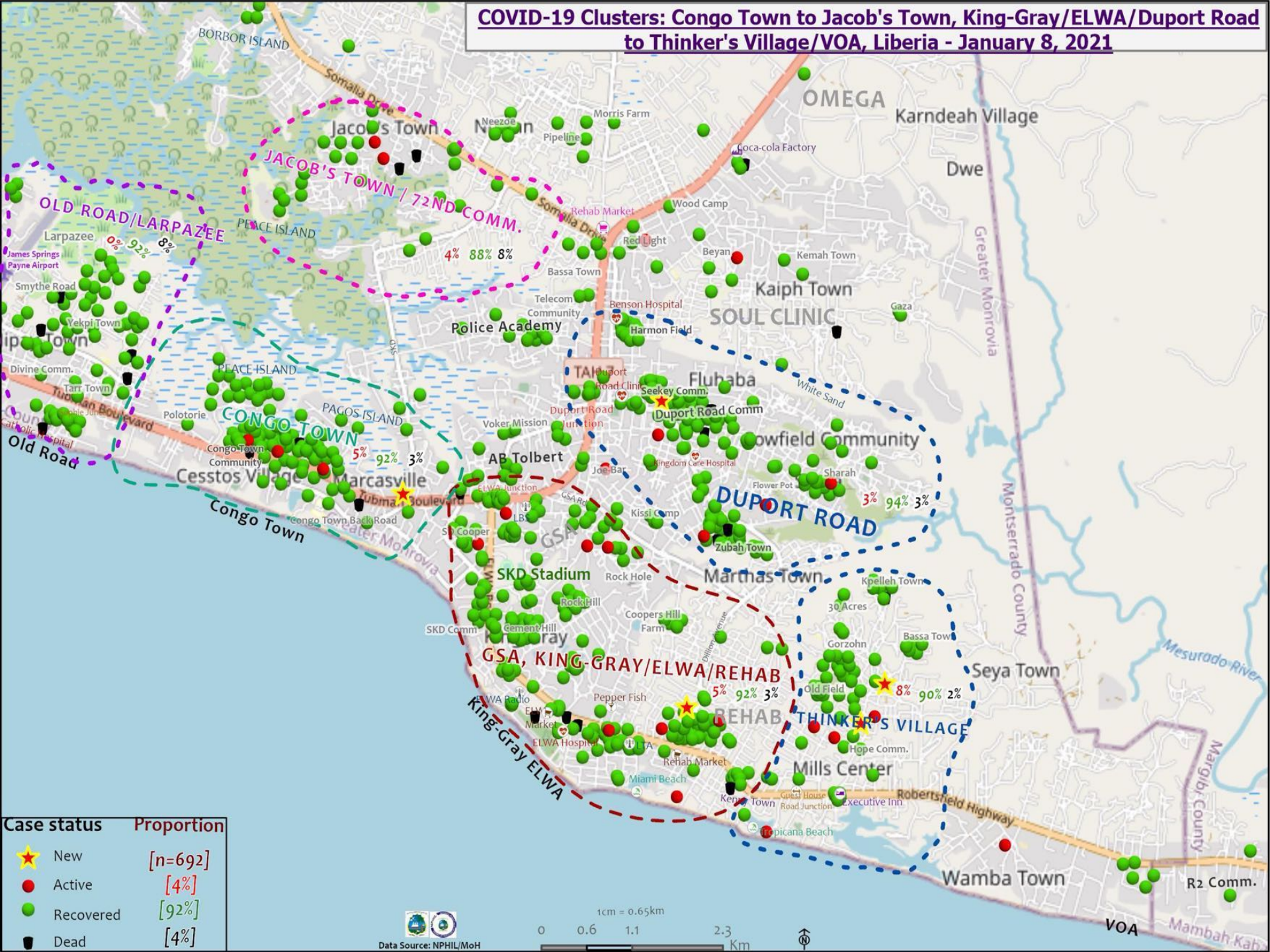


Case status	Proportion
★ New	[n=213]
● Active	[8%]
● Recovered	[89%]
● Dead	[3%]
○ Re-infected	

# Distribution of COVID-19 Cases: Capitol Bye-Pass to Sinkor, Liberia - January 8, 2021



# COVID-19 Clusters: Congo Town to Jacob's Town, King-Gray/ELWA/Duport Road to Thinker's Village/VOA, Liberia - January 8, 2021



Case status	Proportion
★ New	[n=692]
● Active	[4%]
● Recovered	[92%]
■ Dead	[4%]



Data Source: NPHIL/MoH

1cm = 0.65km

0 0.6 1.1 2.3 Km





# Summary of confirmed, recovered, active, and dead cases by reporting counties, Liberia, 16 March 2020 – 8 January 2021

County	Confirmed Cases		Recovered Cases		Active Cases	Dead Cases	
	New	Cum	New	Cum		New	Cum
Bomi	0	23	0	22	0	0	1
Bong	0	45	0	36	4	0	5
Gbarpolu	0	10	0	8	0	0	2
Grand Bassa	0	58	0	58	0	0	0
Grand Cape Mount	0	13	0	13	0	0	0
Grand Gedeh	0	16	0	16	0	0	0
Grand Kru	0	18	0	18	0	0	0
Lofa	0	45	0	34	0	0	11
Margibi	2	89	0	78	5	0	6
Maryland	0	33	0	31	0	0	2
Montserrado	10	1398	0	1278	78	0	43
Nimba	0	67	0	56	0	0	11
Rivercess	0	5	0	3	0	0	2
River Gee	0	36	0	36	0	0	0
Sinoe	0	6	0	5	0	0	1
<b>National</b>	<b>12</b>	<b>1862</b>	<b>0</b>	<b>1692</b>	<b>87</b>	<b>0</b>	<b>84</b>

# Daily Summary Report at Treatment Units – 8 January 2021

Treatment Facility Name	New Admissions	Cumulative Admission	Daily Discharges	Cumulative Recoveries	Daily Deaths	Cumulative Deaths	Currently in treatment
Bomi LGH Treatment Unit	0	18	0	18	0	0	0
Bong Treatment Unit	0	26	0	26	0	0	0
Chief Jallahlone Hospital Treatment Unit	0	1	0	1	0	0	0
Grand Bassa Arcelor Mittal Treatment Unit	0	5	0	5	0	0	0
Grand Bassa LGH Treatment Unit	0	3	0	3	0	0	0
LAC Treatment Unit	0	42	0	42	0	0	0
14 Military Hospital Treatment Unit	0	637	0	631	0	9	0
Union Treatment Center	0	78	0	78	0	0	0
Duside Hospital Treatment Unit	0	42	0	40	0	2	0
Martha Tubman Hospital Treatment Unit	0	12	0	13	0	0	0
Rally Time Treatment Unit	0	4	0	4	0	0	0
Sasstown Treatment Unit	0	7	0	7	0	0	0
Behwan Treatment Unit	0	7	0	7	0	0	0
FJ Grante Hospital Treatment Unit	0	5	0	5	0	0	0
JJ Dossen Hospital Treatment Unit	0	9	0	9	0	0	0
Pleebo Health Center Treatment Unit	0	21	0	21	0	0	0
Tellewoyan Memorial Hospital Treatment Unit	0	13	0	13	0	0	0
Foya Borma Hospital Treatment Unit	0	12	0	12	0	0	0
Zorzor Treatment Unit	0	6	0	6	0	0	0
Robert Sport Treatment Unit	0	1	0	1	0	0	0
Ganta United Methodist Hospital Treatment Unit	0	1	0	1	0	0	0
Arcelor Mittal Yekepa Treatment Unit	0	12	0	12	0	0	0
Jackson F. Doe Treatment Unit	0	5	0	4	0	1	0
St. Frances Hospital Treatment Unit	0	2	0	2	0	0	0
Fish Town Hospital Treatment Unit	0	36	0	36	0	0	0
E&J Medical Center Treatment Unit	0	20	0	19	0	1	0
<b>TOTAL</b>	<b>0</b>	<b>1025</b>	<b>0</b>	<b>1016</b>	<b>0</b>	<b>13</b>	<b>0</b>

# Laboratory Samples Evaluated – 8 January 2021

<b>County</b>	<b>Sample Evaluated</b>	<b>New Positive</b>	<b>Repeat Positive</b>	<b>Initial Negative</b>	<b>Repeat Test Negative</b>	<b>Pending Lab Result</b>
<b>Gbarpolu</b>	1	0	0	1	0	0
<b>Grand Cape Mount</b>	1	0	0	1	0	0
<b>Margibi</b>	22	2	0	20	0	0
<b>Montserrado</b>	184	10	0	174	0	0
<b>TOTAL</b>	<b>208</b>	<b>12</b>	<b>0</b>	<b>196</b>	<b>0</b>	<b>0</b>
<b>Outgoing Traveler</b>	206	10	0	196	0	0
<b>Incoming Traveler</b>	2	2	0	0	0	0
<b>Voluntary</b>	0	0	0	0	0	0

# Summary of COVID-19 Contact Tracing in Response Counties

County	New Contacts Line listed	Cumulative Contacts	No. of Health Care Workers as Contacts	Cumulative no. of Health Care Workers as contacts	Contacts became a case	Cumulative contacts that became a case	Contacts Completed 14 Days	Cumulative Contacts Completing 14 Days	Contacts Under Follow-up	Contacts lost to Follow-up
Montserratado	0	5417	0	508	0	189	0	5309	33	3
Margibi	0	480	0	125	0	42	0	470	10	0
Grand Bassa	0	457	0	140	0	51	0	407	0	0
Sinoe	0	191	0	30	0	1	0	191	0	0
Lofa	0	758	0	103	0	34	0	726	0	0
Nimba	0	613	0	53	0	25	0	550	0	0
Bong	0	302	0	70	0	28	0	300	76	0
Gbarpolu	0	87	0	13	0	8	0	87	0	0
Grand Cape Mount	0	49	0	3	0	4	0	51	0	0
RiverGee	0	123	0	13	0	30	0	123	0	0
Maryland	0	208	0	28	0	19	0	136	0	0
Bomi	0	180	0	17	0	15	0	177	0	0
Rivercess	0	102	0	55	0	0	0	88	0	0
Grand Kru	0	333	0	131	0	17	0	330	0	0
Grand Gedeh	0	163	0	49	0	6	0	125	0	0
<b>National</b>	<b>0</b>	<b>9463</b>	<b>0</b>	<b>1338</b>	<b>0</b>	<b>469</b>	<b>0</b>	<b>9070</b>	<b>119</b>	<b>3</b>

**Thank you for Listening**