



Liberia COVID-19 Daily Sitrep 297 (6th January 2021)

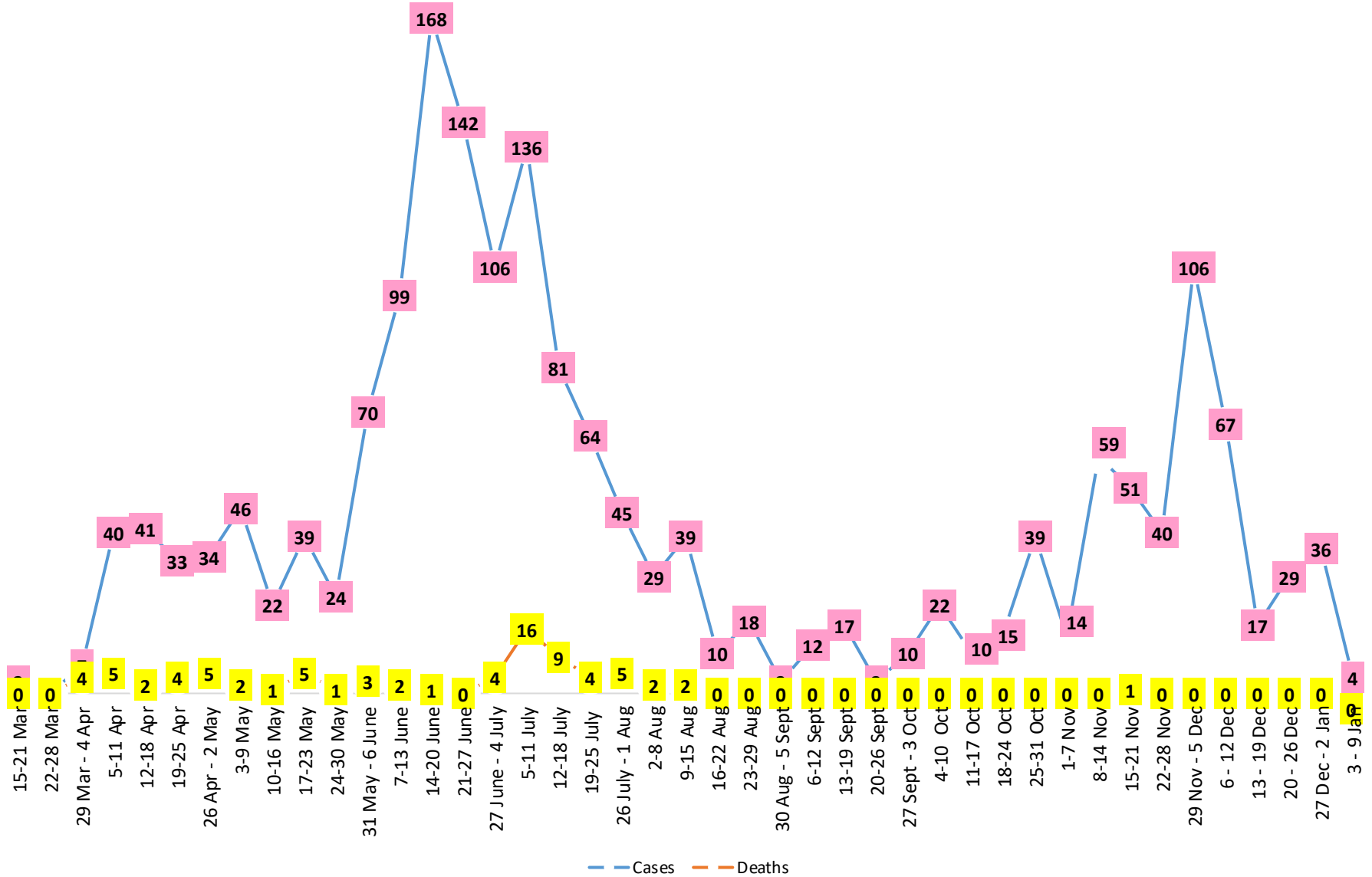
Summary of COVID-19 Cases by Reporting County, Liberia, 16 March 2020 – 6 January 2021

County	Laboratory Confirmed Cases	Confirmed Cases on Contact List	Confirmed Cumulative Cases
Bomi	0	0	23
Bong	0	0	45
Gbarpolu	0	0	10
Grand Bassa	0	0	58
Grand Cape Mount	0	0	13
Grand Kru	0	0	18
Grand Gedeh	0	0	16
Lofa	0	0	45
Margibi	0	0	87
Maryland	0	0	33
Montserrado	1	0	1388
Nimba	0	0	67
Rivercess	0	0	5
River Gee	0	0	36
Sinoe	0	0	6
NATIONAL	1	0	1850

Demographic Breakdown (Gender & Age) of Confirmed COVID-19 Cases (16 March 2020 – 6 January 2021)

County	<15 years		15 - 34		35 - 54		55+		All ages		Total Confirmed
	M	F	M	F	M	F	M	F	M	F	
Bomi	2	2	3	5	7	3	0	1	12	11	23
Bong	3	1	3	6	14	7	8	3	25	17	45
Gbarpolu	1	2	0	2	3	1	1	0	5	5	10
Grand Bassa	11	2	9	11	12	8	3	2	35	23	58
Grand Cape Mount	0	0	9	0	3	0	1	0	13	0	13
Grand Kru	0	0	2	5	4	5	2	0	8	10	18
Grand Gedeh	0	1	1	2	7	3	2	0	10	6	16
Lofa	3	3	8	3	13	5	8	2	32	13	45
Margibi	6	4	14	11	24	10	11	7	55	32	87
Maryland	2	0	9	6	9	4	1	2	21	12	33
Montserrado	49	46	343	193	379	161	149	68	920	468	1388
Nimba	1	4	14	8	26	6	5	3	46	21	67
Rivercess	0	0	2	3	0	0	0	0	2	3	5
River Gee	0	0	4	3	19	5	5	0	28	8	36
Sinoe	0	0	1	0	4	1	0	0	5	1	6
National	78	65	422	258	524	219	196	88	1217	630	1850

COVID-19 WEEKLY EPI-CURVE



Summary of COVID-19 Deaths by Reporting County, Liberia, 16 March 2020 – 6 January 2021

County	DAILY REPORT								Cumulative Deaths
	New Suspected Deaths	Laboratory Confirmed Deaths						Confirmed Deaths on Contact List	
		COVID-19 Treatment Unit	Total in COVID-19 Treatment Unit	Health Facility	Total in Health Facility	Community	Total in Community		
Bomi	0	0	0	0	1	0	0	0	1
Bong	0	0	0	0	4	0	1	0	5
Gbarpolu	0	0	0	0	2	0	0	0	2
Grand Bassa	0	0	0	0	0	0	0	0	0
Grand Cape Mount	0	0	0	0	0	0	0	0	0
Grand Gedeh	0	0	0	0	0	0	0	0	0
Grand Kru	0	0	0	0	0	0	0	0	0
Lofa	0	0	0	0	6	0	5	0	11
Maryland	0	0	0	0	2	0	0	0	2
Margibi	0	0	2	0	4	0	0	0	6
Montserrado	0	0	9	0	19	0	16	0	43
Nimba	0	0	2	0	5	0	4	0	11
Rivercess	0	0	0	0	1	0	1	0	2

The Liberia Case Fatality rate (CFR) officially considered is for deaths that occurred among patients in care at the COVID-19 treatment units across the country. As of 30 December 2020 , a total of 13 deaths have been recorded CFR=1.3%. The country is however keeping active surveillance on community deaths and deaths in non COVID-19 treatment health units.

Daily and Cumulative Healthcare Worker (HCW) COVID-19 Cases and Deaths by County, Liberia, 16 March 2020 – 6 January 2021

County	DAILY REPORT						CUMULATIVE CASES (ALIVE & DEAD)	
	New Suspected & High Risk Cases (Alive)			New Suspect Death	Laboratory Confirmed Cases	Confirmed Cases on Contact List	Confirmed	Deaths
	Suspect	High Risk	Total					
Bomi	0	0	0	0	0	0	5	0
Bong	0	0	0	0	0	0	19	3
Gbarpolu	0	0	0	0	0	0	1	0
Grand Bassa	0	0	0	0	0	0	21	0
Grand Gedeh	0	0	0	0	0	0	2	0
Grand Kru	0	0	0	0	0	0	14	0
Lofa	0	0	0	0	0	0	16	0
Margibi	0	0	0	0	0	0	12	1
Maryland	0	0	0	0	0	0	16	0
Montserrado	0	0	0	0	0	0	86	1
Nimba	0	0	0	0	0	0	14	0
Rivercess	0	0	0	0	0	0	3	0
River Gee	0	0	0	0	0	0	10	0
Sinoe	0	0	0	0	0	0	3	0
NATIONAL	0	0	0	0	0	0	222	5

Cadre Cases and Deaths by Health Care Workers (16 March 2020 – 6 January 2021)

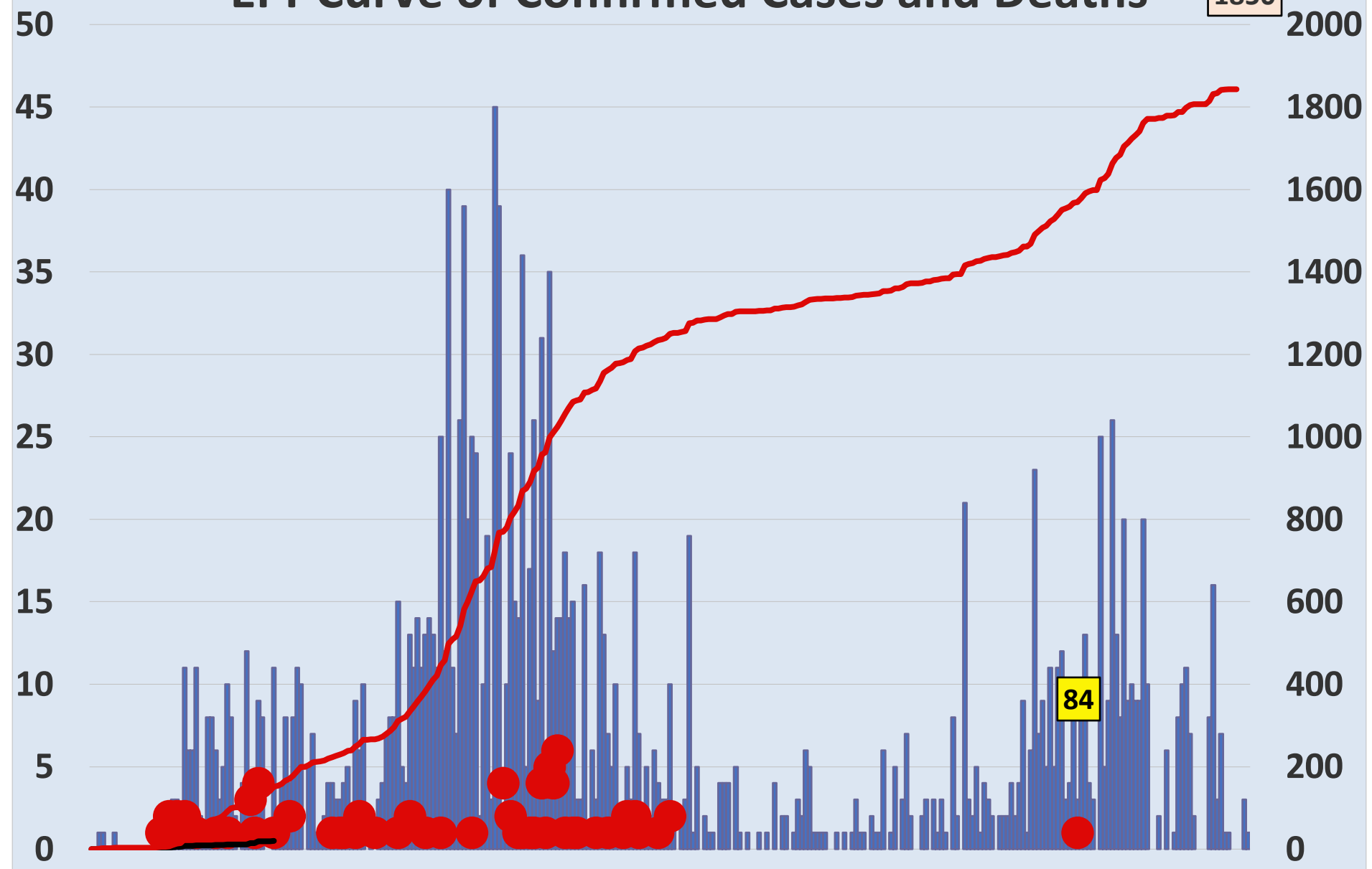
Health Care Worker Cadre	Montserratado		Margibi		Nimba		River Gee		Sinoe		Grand Kru		Gbarpolu		Bong		Lofa		Grand Bassa		Maryland		Bomi		Rivercess		Grand Gedeh		National (Total)	
	Cases	Deaths	Cases	Deaths	Cases	Deaths	Cases	Deaths	Cases	Deaths	Cases	Deaths	Cases	Deaths	Cases	Deaths	Cases	Deaths	Cases	Deaths	Cases	Deaths	Cases	Deaths	Cases	Deaths	Cases	Deaths	Cases	Deaths
Doctors	17	0	1	0	0	0	1	0	0	0	0	0	0	0	1	0	0	0	1	0	0	0	0	0	0	0	0	0	21	0
Pharmacists	4	0	0	0	0	0	0	0	0	0	0	0	0	0	0	0	0	0	0	0	0	0	0	0	0	0	0	4	0	
Nurses	22	1	2	0	2	0	5	0	0	0	2	0	1	1	12	1	8	0	5	0	1	0	1	0	0	0	0	61	3	
Nurse Aid	0	0	0	0	2	0	0	0	0	0	4	0	0	0	0	0	0	8	0	2	0	0	0	0	0	0	0	16	0	
Midwife	0	0	0	0	0	0	1	0	0	0	1	0	0	0	1	0	1	0	1	0	0	0	0	0	0	0	0	5	0	
Physician Assistants	8	0	1	0	1	0	1	0	0	0	1	0	0	0	0	0	1	0	1	0	0	0	0	0	0	0	0	14	0	
Lab Technician	9	0	1	0	2	0	0	0	1	0	1	0	0	0	0	0	2	0	0	0	10	0	0	0	3	0	0	29	0	
Environmental Health Technicians	5	0	0	0	0	0	0	0	0	0	0	0	0	0	0	0	0	0	0	0	0	0	0	0	0	0	0	5	0	
Dieticians	0	0	7	1	0	0	0	0	0	0	0	0	0	0	0	0	0	0	0	0	0	0	0	0	0	0	0	7	1	
Hospital Cleaner	1	0	0	0	0	0	0	0	0	0	1	0	0	0	1	0	0	0	1	0	2	0	0	0	0	0	0	6	0	
Others*	20	0	0	0	7	0	2	0	2	0	4	0	0	0	4	1	4	0	4	0	1	0	4	0	0	2	0	54	1	
Total:	86	1	12	1	14	0	10	0	3	0	14	0	1	1	19	2	16	0	21	0	16	0	5	0	3	0	2	0	222	5

***Others include the following:**

Radiologist, Microbiologist, Epidemiologist, Dispenser, Licensed Practical Nurse, Psychosocial worker, Hygienist, Logistician, Vaccinator, Ambulance Driver, Procurement Officer, Registrar, Accountant, Secretary, Hospital Administrator, Community Health Volunteer, GIS Specialist, EOC Coordinator

EPI-Curve of Confirmed Cases and Deaths

1850



■ Daily Cases
● Daily Deaths

COVID-19 Status in Liberia by County January 6, 2021

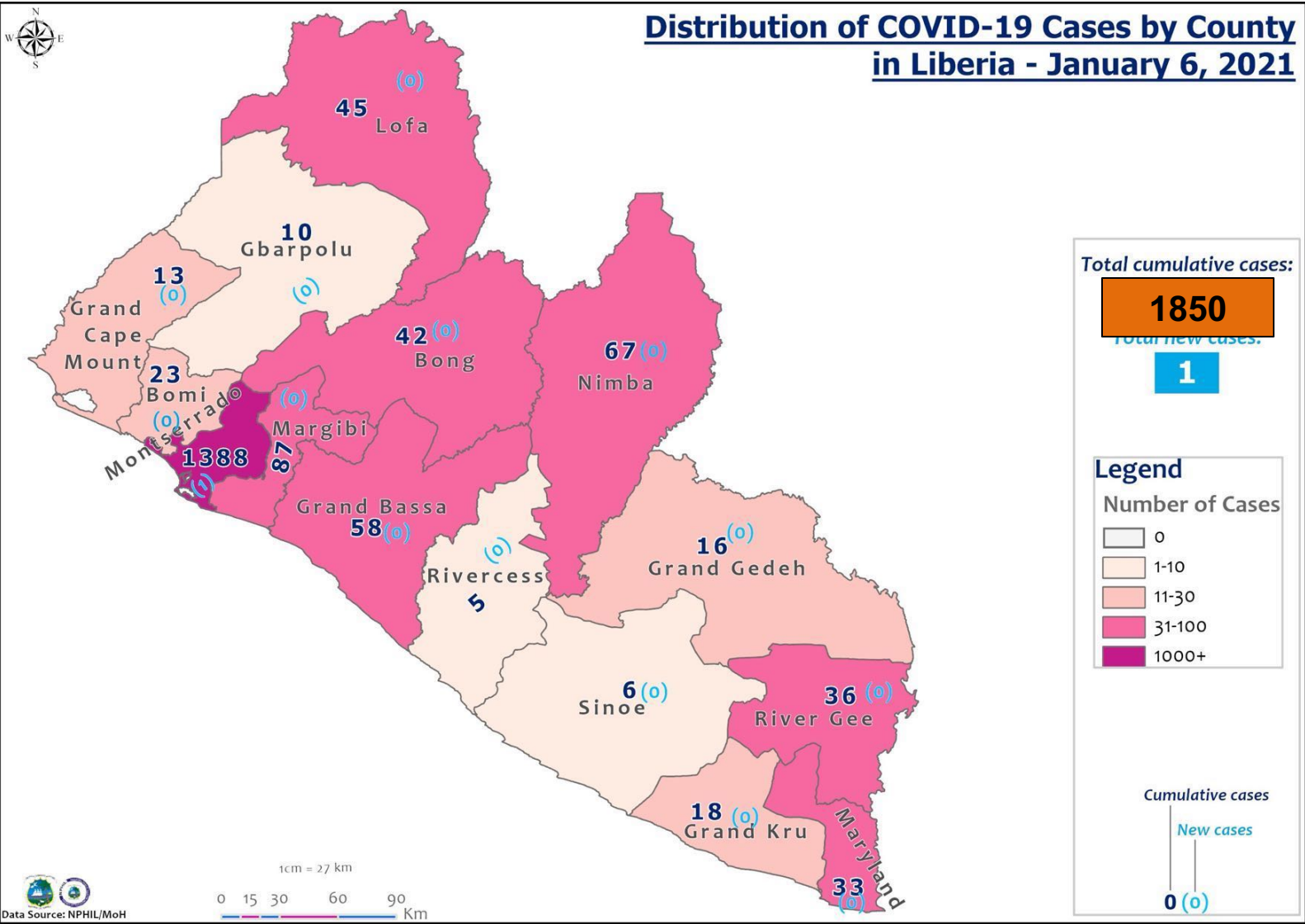


Legend

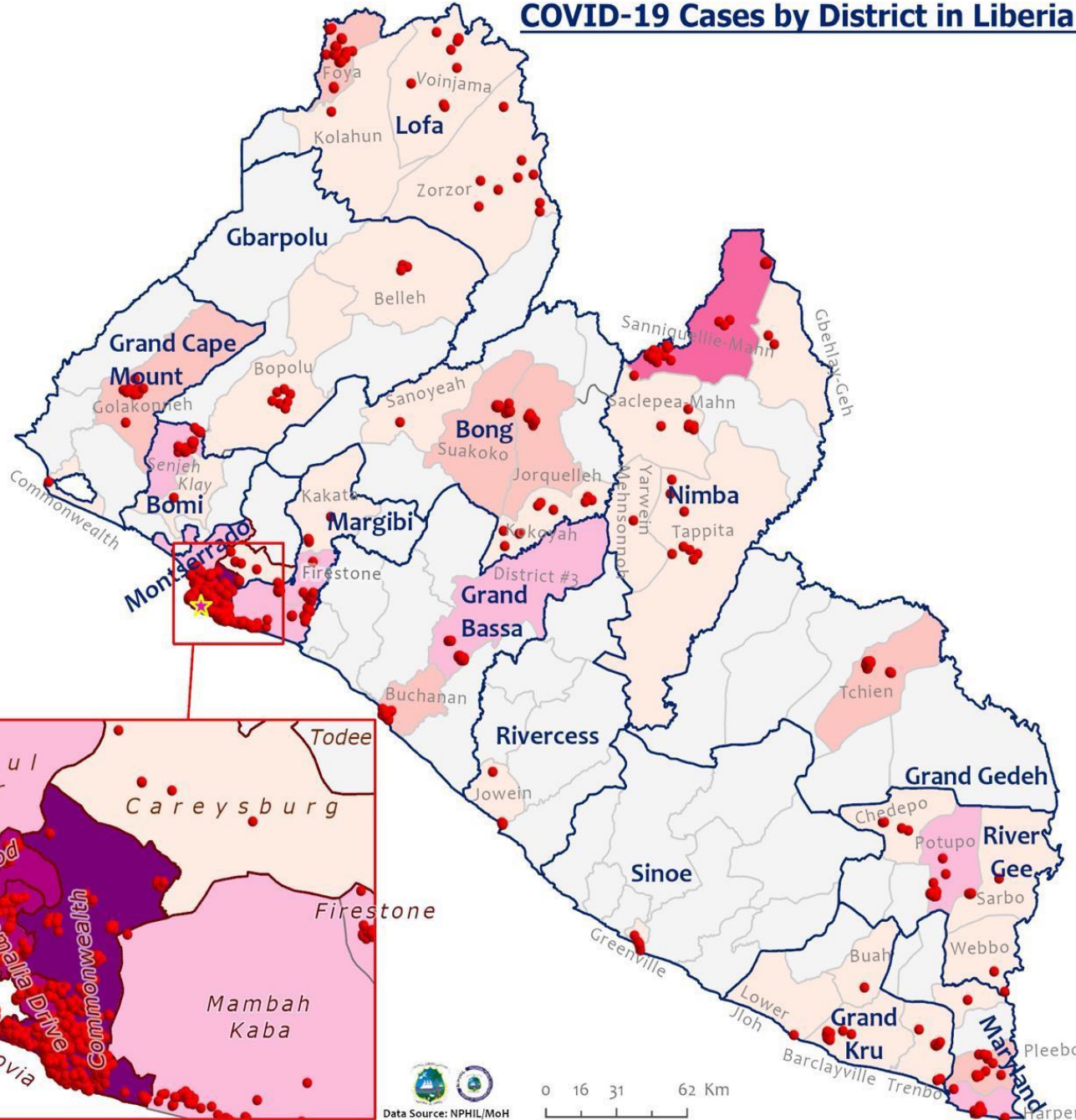
County Status

- Preparedness
- 28-Day Countdown
- Response

Distribution of COVID-19 Cases by County in Liberia - January 6, 2021



COVID-19 Cases by District in Liberia - January 6, 2021



Total Cases: 1850

Affected Counties	Cumulative Cases
Montserrado	1388
Margibi	87
Nimba	67
Grand Bassa	58
Lofa	45
Bong	42
River Gee	36
Maryland	33
Bomi	23
Grand Kru	18
Grand Gedeh	16
Grand Cape	13
Gbarpolu	10
Sinoe	6
Rivercess	5

Legend

Case Status

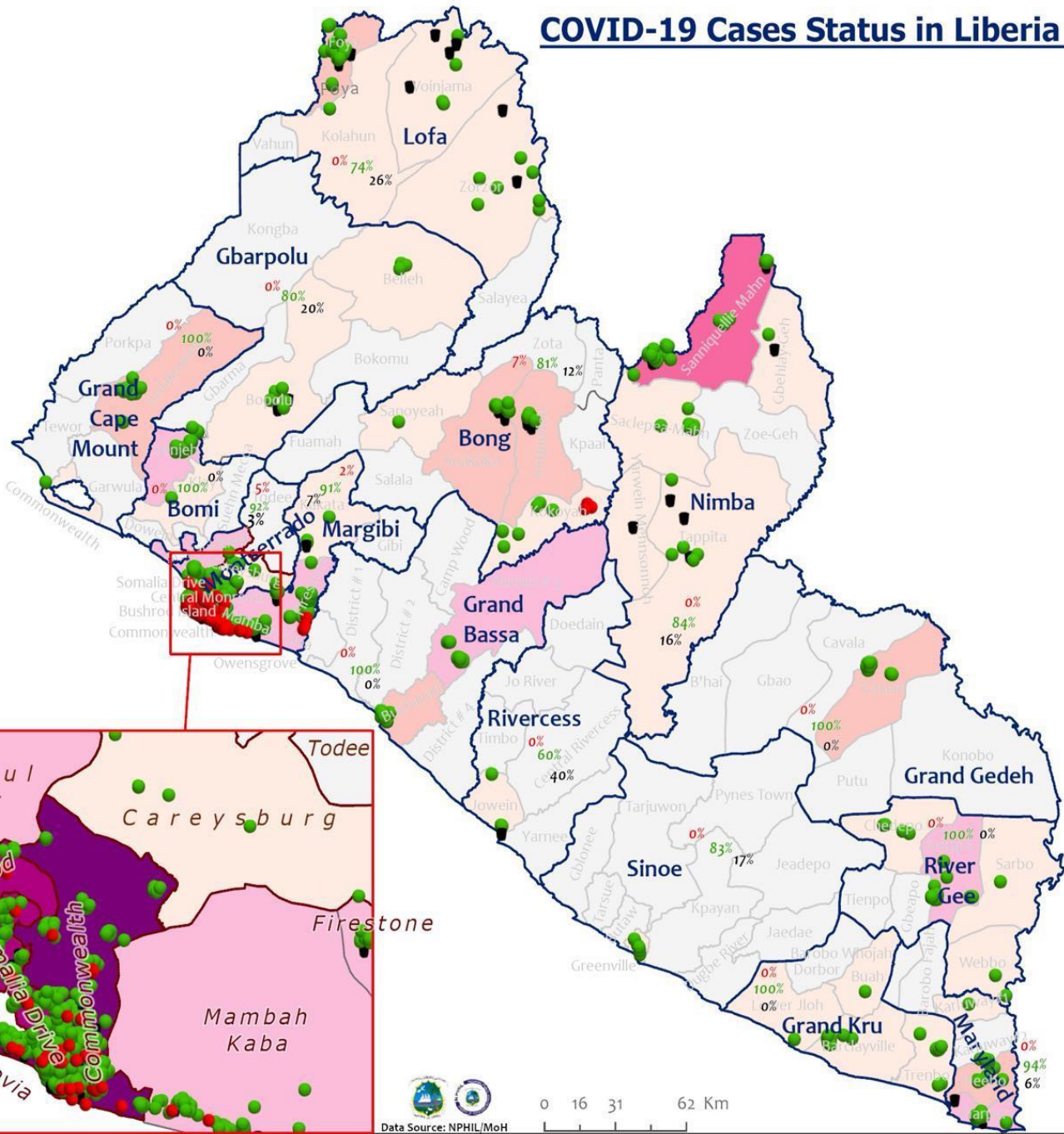
- ★ New confirmed case
- Confirmed cases

Cases / District

- 0
- 1-10
- 11-20
- 21-50
- 51-100
- 101-200
- 201-500



COVID-19 Cases Status in Liberia - 6 January 2021



Total Cases: 1850

Affected Counties	Cumulative Cases
Montserrado	1388
Margibi	87
Nimba	67
Grand Bassa	58
Lofa	45
Bong	42
River Gee	36
Maryland	33
Bomi	23
Grand Kru	18
Grand Gedeh	16
Grand Cape	13
Mount	10
Sinoe	6
Rivercess	5

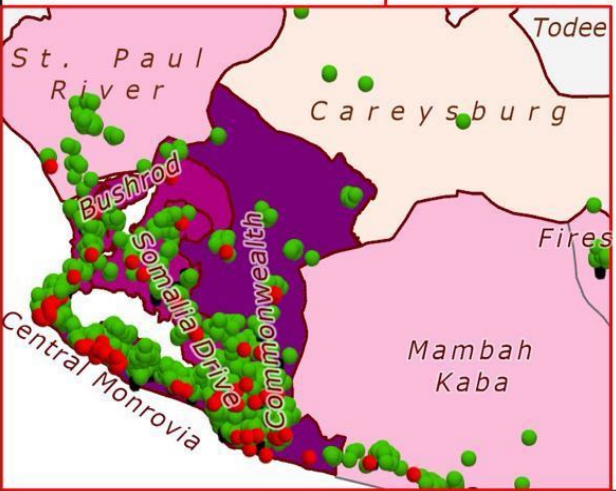
Legend

Case Status

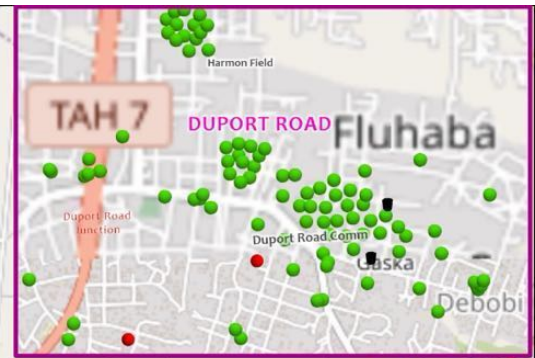
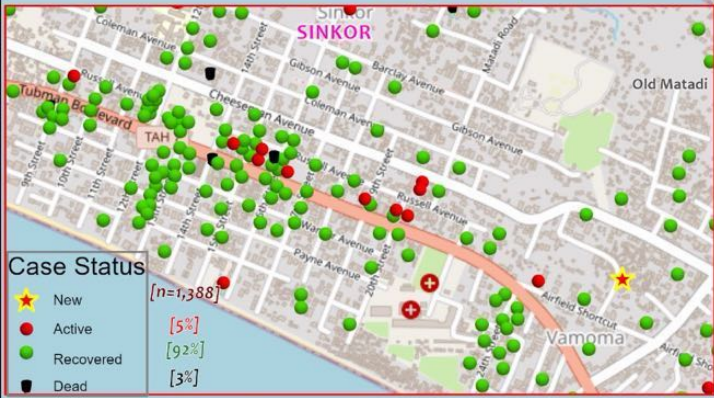
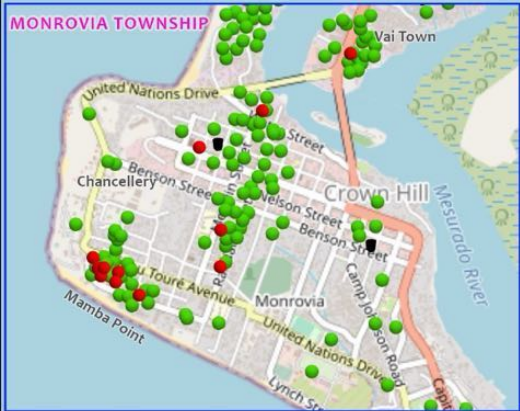
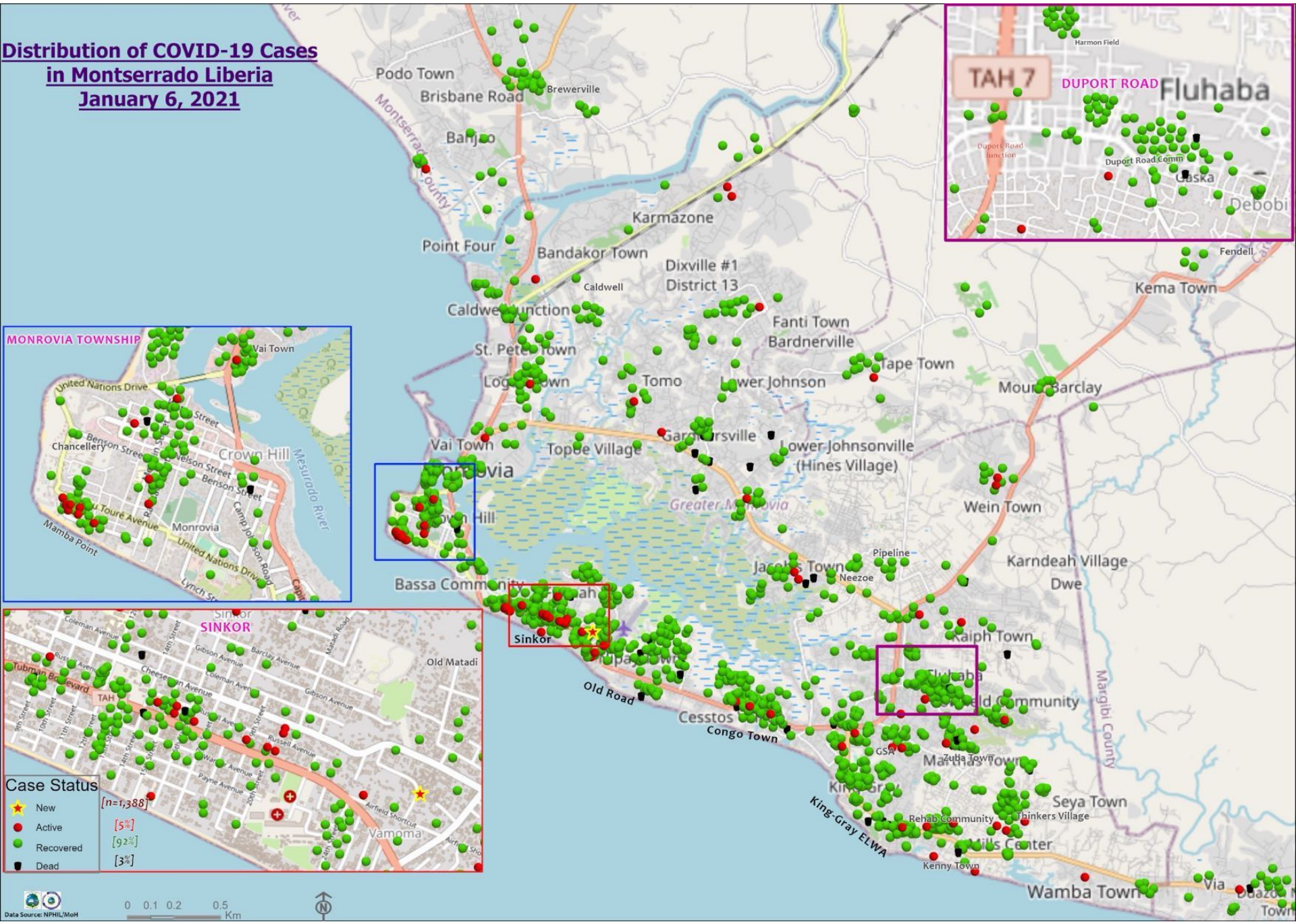
- Active [4%]
- Recovered [91%]
- Dead [5%]

Cases / District

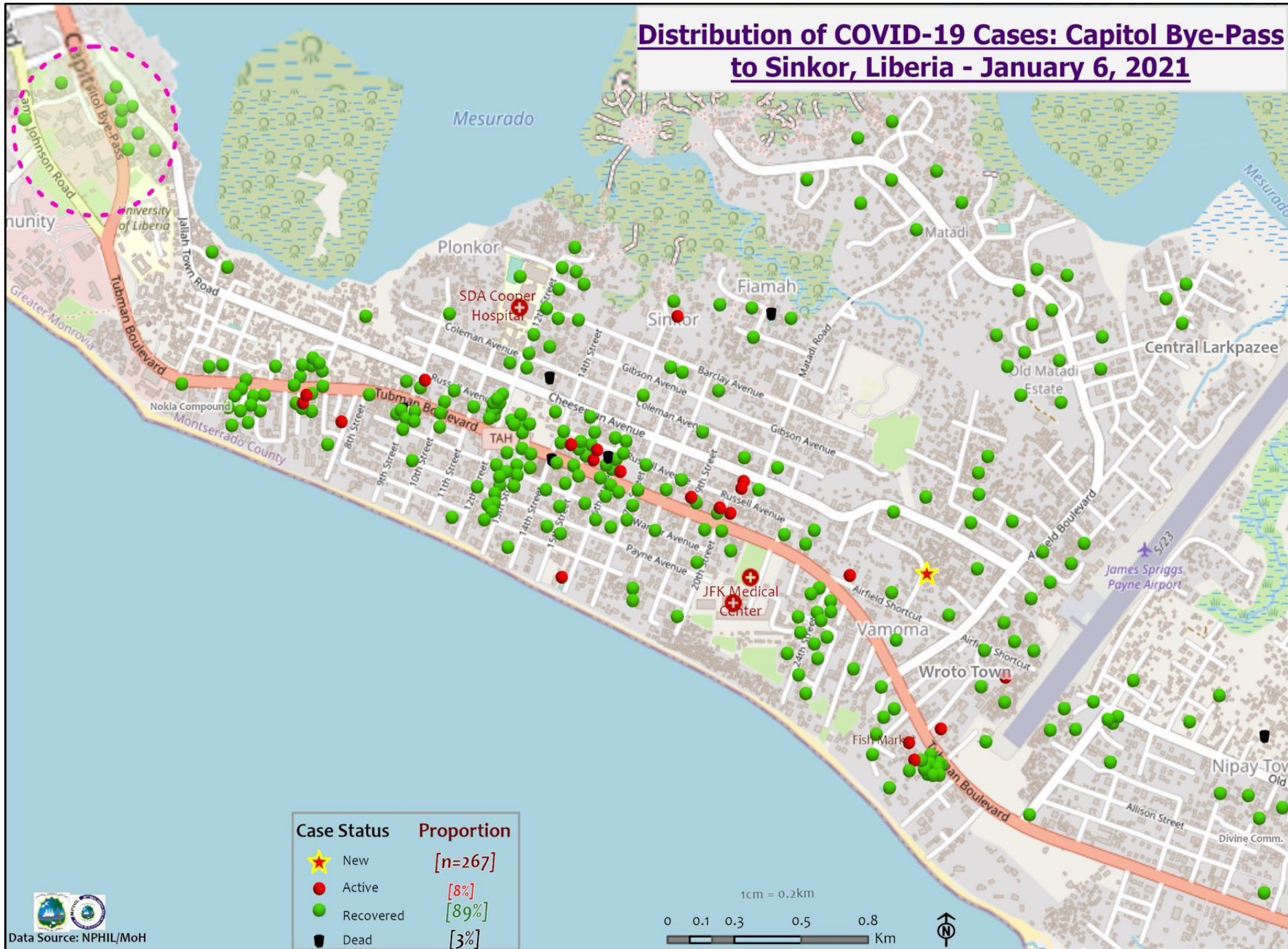
- 0
- 1-10
- 11-20
- 21-50
- 51-100
- 101-200
- 201-500



Distribution of COVID-19 Cases in Montserratado Liberia January 6, 2021



Distribution of COVID-19 Cases: Capitol Bye-Pass to Sinkor, Liberia - January 6, 2021



Summary of confirmed, recovered, active, and dead cases by reporting counties, Liberia, 16 March 2020 – 6 January 2021

County	Confirmed Cases		Recovered Cases		Active Cases	Dead Cases	
	New	Cum	New	Cum		New	Cum
Bomi	0	23	0	22	0	0	1
Bong	0	45	0	36	4	0	5
Gbarpolu	0	10	0	8	0	0	2
Grand Bassa	0	58	0	58	0	0	0
Grand Cape Mount	0	13	0	13	0	0	0
Grand Gedeh	0	16	0	16	0	0	0
Grand Kru	0	18	0	18	0	0	0
Lofa	0	45	0	34	0	0	11
Margibi	0	87	0	78	3	0	6
Maryland	0	33	0	31	0	0	2
Montserrado	1	1388	0	1278	68	0	43
Nimba	0	67	0	56	0	0	11
Rivercess	0	5	0	3	0	0	2
River Gee	0	36	0	36	0	0	0
Sinoe	0	6	0	5	0	0	1
National	1	1850	0	1692	75	0	84

Daily Summary Report at Treatment Units – 6 January 2021

Treatment Facility Name	New Admissions	Cumulative Admission	Daily Discharges	Cumulative Recoveries	Daily Deaths	Cumulative Deaths	Currently in treatment
Bomi LGH Treatment Unit	0	18	0	18	0	0	0
Bong Treatment Unit	0	26	0	26	0	0	0
Chief Jallahlone Hospital Treatment Unit	0	1	0	1	0	0	0
Grand Bassa Arcelor Mittal Treatment Unit	0	5	0	5	0	0	0
Grand Bassa LGH Treatment Unit	0	3	0	3	0	0	0
LAC Treatment Unit	0	42	0	42	0	0	0
14 Military Hospital Treatment Unit	0	637	0	631	0	9	0
Union Treatment Center	0	78	0	78	0	0	0
Duside Hospital Treatment Unit	0	42	0	40	0	2	0
Martha Tubman Hospital Treatment Unit	0	12	0	13	0	0	0
Rally Time Treatment Unit	0	4	0	4	0	0	0
Sasstown Treatment Unit	0	7	0	7	0	0	0
Behwan Treatment Unit	0	7	0	7	0	0	0
FJ Grante Hospital Treatment Unit	0	5	0	5	0	0	0
JJ Dossen Hospital Treatment Unit	0	9	0	9	0	0	0
Pleebo Health Center Treatment Unit	0	21	0	21	0	0	0
Tellewoyan Memorial Hospital Treatment Unit	0	13	0	13	0	0	0
Foya Borma Hospital Treatment Unit	0	12	0	12	0	0	0
Zorzor Treatment Unit	0	6	0	6	0	0	0
Robert Sport Treatment Unit	0	1	0	1	0	0	0
Ganta United Methodist Hospital Treatment Unit	0	1	0	1	0	0	0
Arcelor Mittal Yekepa Treatment Unit	0	12	0	12	0	0	0
Jackson F. Doe Treatment Unit	0	5	0	4	0	1	0
St. Frances Hospital Treatment Unit	0	2	0	2	0	0	0
Fish Town Hospital Treatment Unit	0	36	0	36	0	0	0
E&J Medical Center Treatment Unit	0	20	0	19	0	1	0
TOTAL	0	1025	0	1016	0	13	0

Laboratory Samples Evaluated – 6 January 2021

County	Sample Evaluated	New Positive	Repeat Positive	Initial Negative	Repeat Test Negative	Pending Lab Result
Bong	7	0	0	7	0	0
Grand Bassa	7	0	0	7	0	0
Grand Cape Mount	8	0	0	8	0	0
Margibi	41	0	0	40	0	1
Montserrado	405	1	0	401	0	3
Maryland	1	0	0	1	0	0
Nimba	2	0	0	2	0	0
River Gee	1	0	0	1	0	0
Rivercess	1	0	0	1	0	0
TOTAL	473	1	0	468	0	4
Outgoing Traveler	204	1	0	201	0	2
Incoming Traveler	269	0	0	267	0	2
Voluntary	0	0	0	0	0	0

Summary of COVID-19 Daily PoE in Response Counties – Jan. 6

Date of travel	Type of POE	Point of Entry Name	Type of conveyance	# of Travelers Arrival	# of Travelers departure	# of travelers elevated with temp	Total Travelers screened		Total # of Travelers	Cumulative Travelers
							Male	Female		
6-Jan	Airport	RIA	Air Morac	0	0	0	0	0	0	
			Brussels	45	78	0	68	55	123	
			AWA	10	22	0	22	10	32	
			Air France	31	36	0	37	30	67	
			Air Cote D'Ivoire	0	0	0	0	0	0	
			DHL	0	0	0	0	0	0	
			Kenya	0	0	0	0	0	0	
			Asky	69	0	0	53	16	69	
			Others	0	0	0	0	0	0	
	James Spriggs Payne Airport		0	0	0	0	0	0		
		Bo Water Side	Land	94	68	0	55	107	162	
	Buchanan	Vessel	0	0	0	0	0	0		
	Seaport	Freeport of Monrovia	Vessel	21	21	0	42	0	42	
Total:				270	225	0	277	218	495	495

Summary of COVID-19 Contact Tracing in Response Counties

County	New Contacts Line listed	Cumulative Contacts	No. of Health Care Workers as Contacts	Cumulative no. of Health Care Workers as contacts	Contacts became a case	Cumulative contacts that became a case	Contacts Completed 14 Days	Cumulative Contacts Completing 14 Days	Contacts Under Follow-up	Contacts lost to Follow-up
Montserrado	0	5417	0	508	0	189	0	5309	33	3
Margibi	0	480	0	125	0	42	0	470	10	0
Grand Bassa	0	457	0	140	0	51	0	407	0	0
Sinoe	0	191	0	30	0	1	0	191	0	0
Lofa	0	758	0	103	0	34	0	726	0	0
Nimba	0	613	0	53	0	25	0	550	0	0
Bong	0	302	0	70	0	28	0	300	12	0
Gbarpolu	0	87	0	13	0	8	0	87	0	0
Grand Cape Mount	0	49	0	3	0	4	0	51	0	0
RiverGee	0	123	0	13	0	30	0	123	0	0
Maryland	0	208	0	28	0	19	0	136	0	0
Bomi	0	180	0	17	0	15	0	177	0	0
Rivercess	0	102	0	55	0	0	0	88	0	0
Grand Kru	0	333	0	131	0	17	0	330	0	0
Grand Gedeh	0	163	0	49	0	6	0	125	0	0
National	0	9463	0	1338	0	469	0	9070	55	3

Thank you for Listening