



Liberia COVID-19 Daily Sitrep 475 (July 3, 2021)

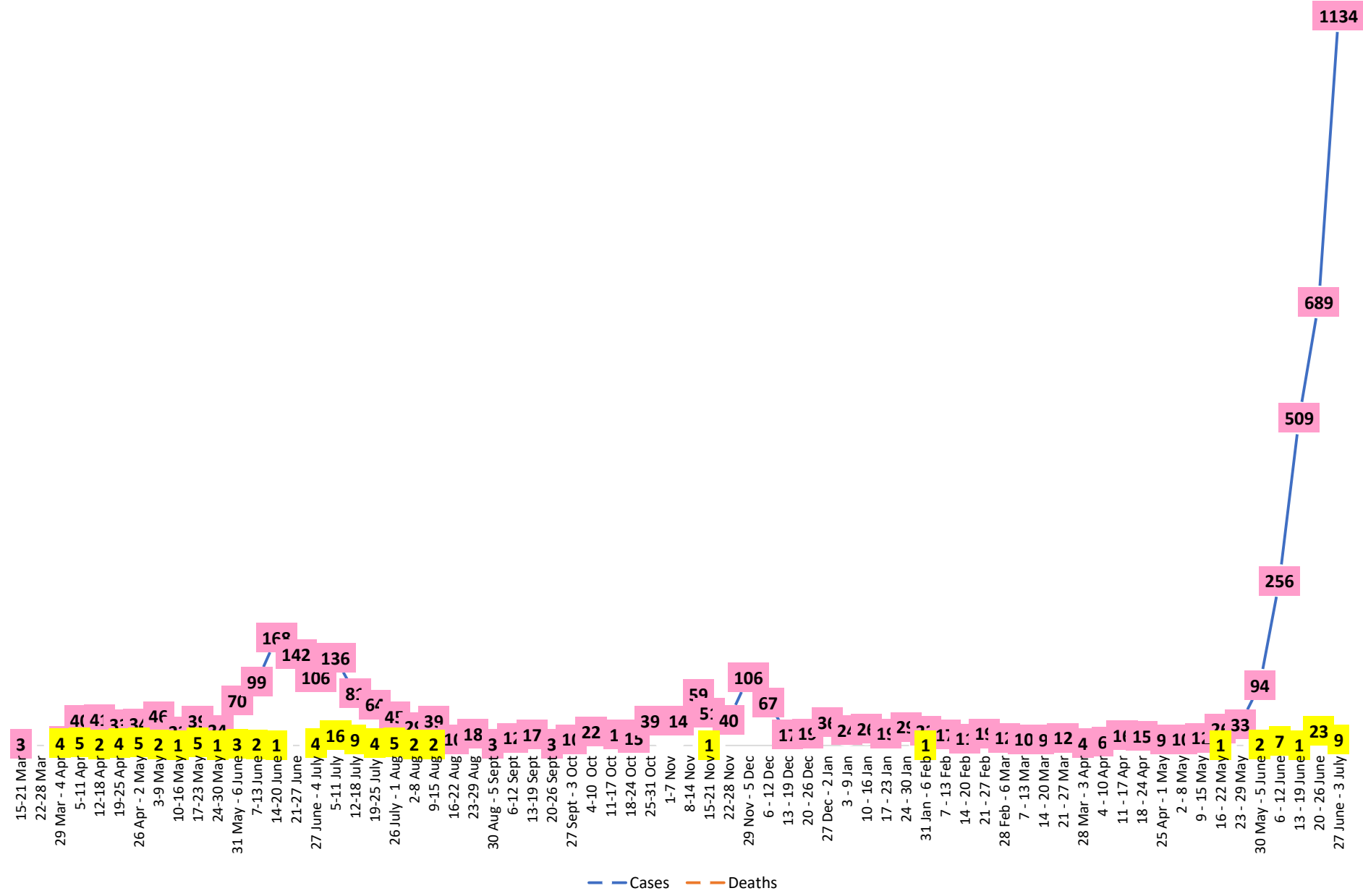
Summary of COVID-19 Cases by Reporting County, Liberia, 16 March 2020 – 3 July 2021

County	Laboratory Confirmed Cases	Confirmed Cases on Contact List	Confirmed Cumulative Cases
Bomi	0	0	61
Bong	3	0	102
Gbarpolu	0	0	38
Grand Bassa	1	0	90
Grand Cape Mount	1	0	50
Grand Kru	0	0	18
Grand Gedeh	0	0	17
Lofa	10	0	84
Margibi	4	0	218
Maryland	5	0	44
Montserrado	104	0	3979
Nimba	5	0	105
Rivercess	0	0	15
River Gee	0	0	36
Sinoe	0	0	13
NATIONAL	133	0	4870

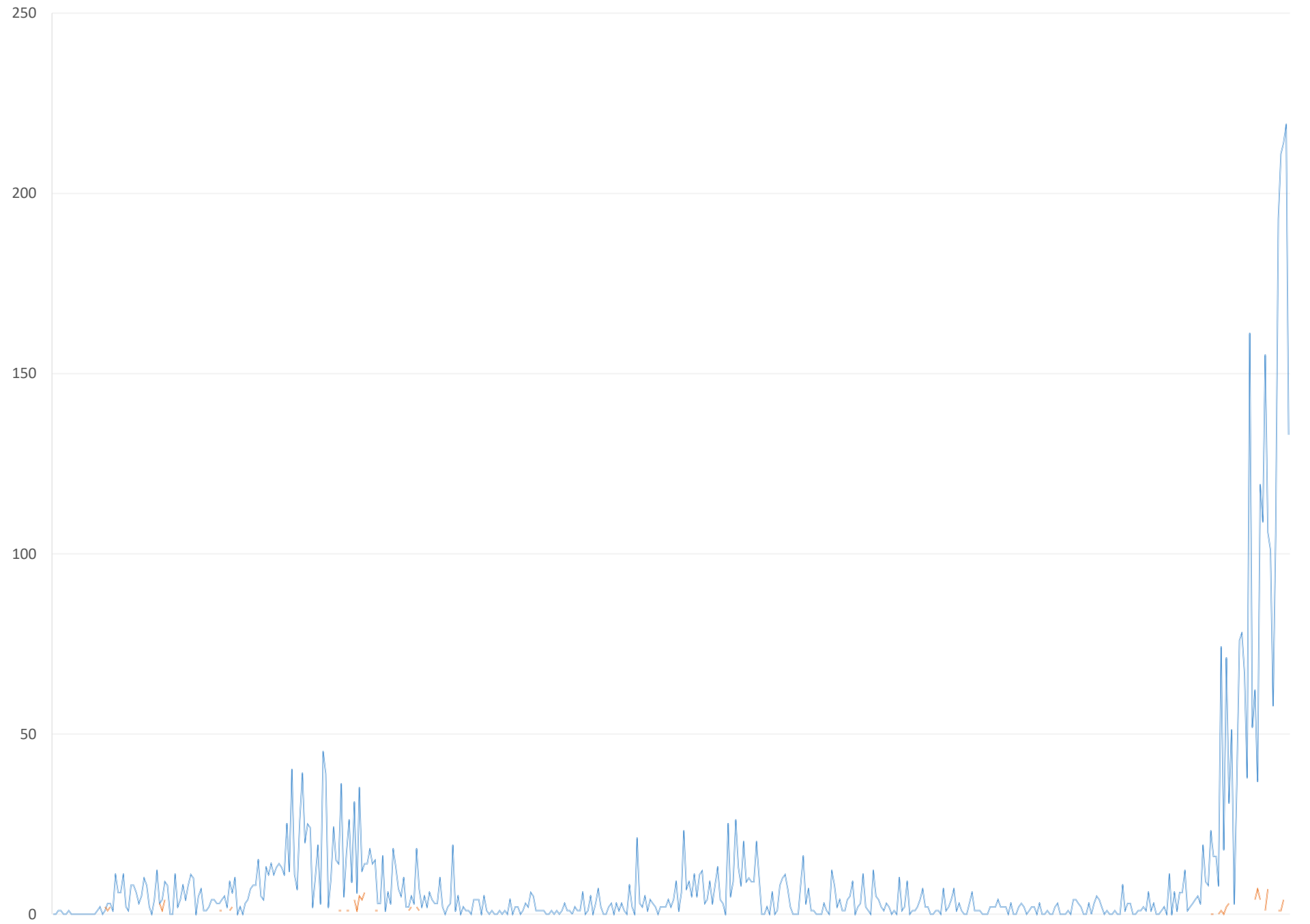
Demographic Breakdown (Gender & Age) of Confirmed COVID-19 Cases (16 March 2020 – 3 June 2021)

County	<15 years		15 - 34		35 - 54		55+		All ages		Total Confirmed
	M	F	M	F	M	F	M	F	M	F	
Bomi	2	2	7	12	25	9	2	2	36	25	61
Bong	3	2	11	10	41	15	13	7	68	34	102
Gbarpolu	1	2	9	4	16	4	2	0	28	10	38
Grand Bassa	14	6	14	14	19	11	8	4	55	35	90
Grand Cape Mount	1	0	20	0	26	0	3	0	50	0	50
Grand Kru	0	0	2	5	4	5	2	0	8	10	18
Grand Gedeh	0	1	1	2	7	4	2	0	10	7	17
Lofa	11	6	11	10	22	8	12	4	56	28	84
Margibi	7	6	30	21	69	33	38	14	144	74	218
Maryland	2	0	10	6	14	7	2	3	28	16	44
Montserrado	91	86	807	526	1177	530	469	293	2544	1435	3979
Nimba	1	4	15	14	38	13	15	5	69	36	105
Rivercess	0	0	2	3	5	2	2	1	9	6	15
River Gee	0	0	4	3	19	5	5	0	28	8	36
Sinoe	0	0	1	0	11	1	0	0	12	1	13
National	133	115	944	630	1493	647	575	333	3145	1725	4870

COVID-19 WEEKLY EPI-CURVE



Daily Cases Daily Deaths



Summary of COVID-19 Deaths by Reporting County, Liberia, 16 March 2020 – 3 July 2021

County	aw Suspected Deaths	COVID-19 Treatment Unit	Total in COVID-19 Treatment Unit	Health Facility	Total in Health Facility	Community	Total in Community	Confirmed Deaths on Contact List	Cumulative Deaths
Bomi	0	0	0	0	1	0	0	0	1
Bong	0	0	0	0	7	0	1	0	8
Gbarpolu	0	0	0	0	2	0	0	0	2
Grand Bassa	0	0	0	0	1	0	0	0	1
Grand Cape Mount	0	0	0	0	0	0	0	0	0
Grand Gedeh	0	0	0	0	0	0	0	0	0
Grand Kru	0	0	0	0	0	0	0	0	0
Lofa	0	0	0	0	6	0	5	0	11
Maryland	0	0	0	0	2	0	0	0	2
Margibi	0	0	2	0	6	0	0	0	8
Montserrado	0	2	26	0	38	2	18	0	82
Nimba	0	0	2	0	9	0	4	0	15
Rivercess	0	0	0	0	1	0	1	0	2
River Gee	0	0	0	0	0	0	0	0	0
Sinoe	0	0	0	0	1	0	0	0	1
National	0	2	30	0	74	2	29	0	133

Daily and Cumulative Healthcare Worker (HCW) COVID-19 Cases and Deaths by County, Liberia, 16 March 2020 – 3 July 2021

County	DAILY REPORT						CUMULATIVE CASES (ALIVE & DEAD)	
	New Suspected & High Risk Cases (Alive)			New Suspect Death	Laboratory Confirmed Cases	Confirmed Cases on Contact List	Confirmed	Deaths
	Suspect	High Risk	Total					
Bomi	0	0	0	0	0	0	8	0
Bong	0	0	0	0	0	0	21	4
Gbarpolu	0	0	0	0	0	0	1	0
Grand Bassa	0	0	0	0	0	0	21	0
Grand Gedeh	0	0	0	0	0	0	2	0
Grand Kru	0	0	0	0	0	0	14	0
Lofa	0	0	0	0	0	0	17	0
Margibi	0	0	0	0	0	0	12	1
Maryland	0	0	0	0	0	0	16	0
Montserrado	0	0	0	0	0	0	88	1
Nimba	0	0	0	0	0	0	15	0
Rivercess	0	0	0	0	0	0	3	0
River Gee	0	0	0	0	0	0	10	0
Sinoe	0	0	0	0	0	0	3	0
NATIONAL	0	0	0	0	0	0	231	6

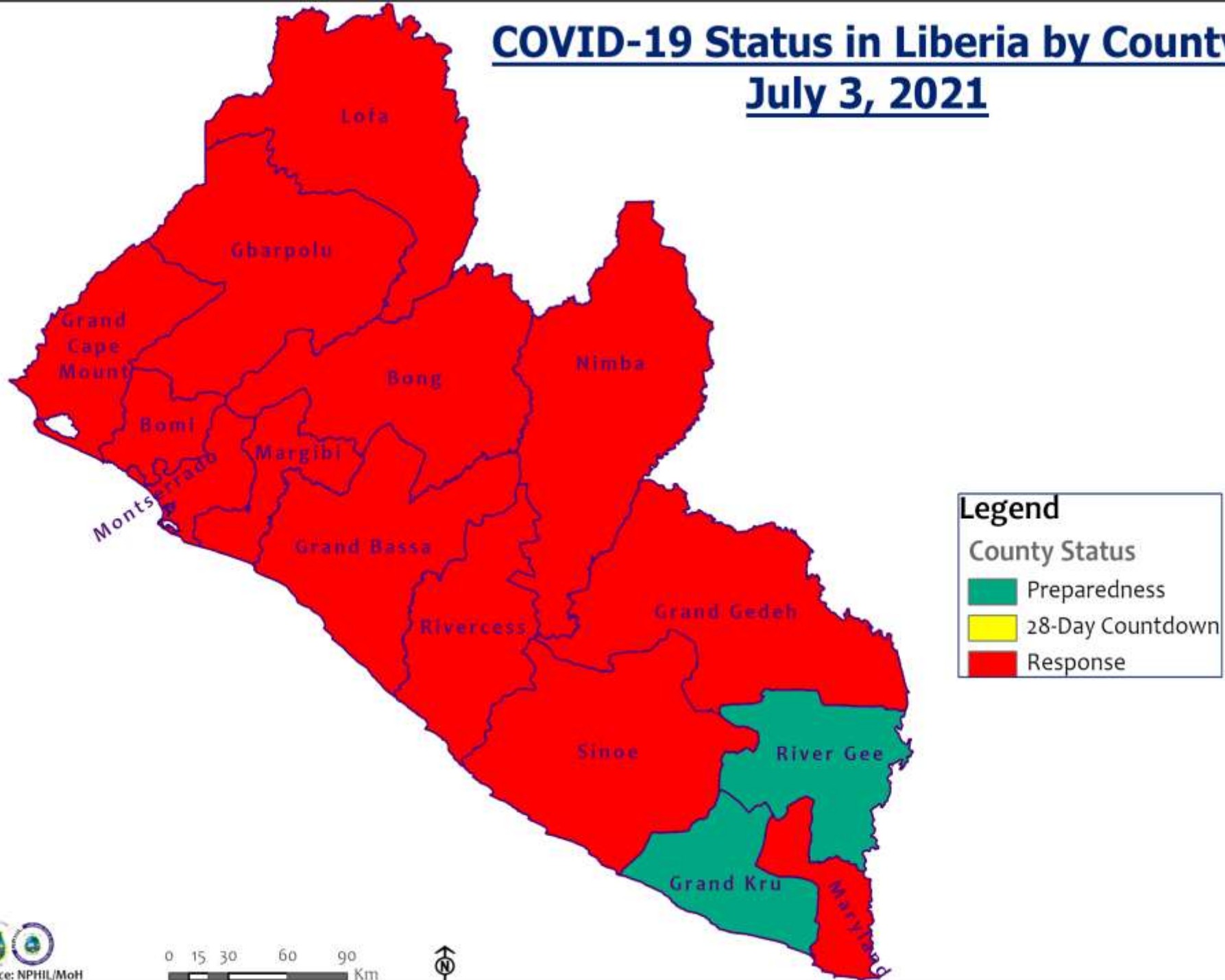
Cadre Cases and Deaths by Health Care Workers (16 March 2020 – 3 July 2021)

Health Care Worker Cadre	Montserratado		Margibi		Nimba		River Gee		Sinoe		Grand Kru		Gbarpolu		Bong		Lofa		Grand Bassa		Maryland		Bomi		Rivercess		Grand Gedeh		National (Total)	
	Cases	Deaths	Cases	Deaths	Cases	Deaths	Cases	Deaths	Cases	Deaths	Cases	Deaths	Cases	Deaths	Cases	Deaths	Cases	Deaths	Cases	Deaths	Cases	Deaths	Cases	Deaths	Cases	Deaths	Cases	Deaths	Cases	Deaths
Doctors	17	0	1	0	0	0	1	0	0	0	0	0	0	0	1	0	0	0	1	0	0	0	0	0	0	0	0	21	0	
Pharmacists	4	0	0	0	0	0	0	0	0	0	0	0	0	0	0	0	0	0	0	0	0	0	0	0	0	0	0	4	0	
Nurses	23	1	2	0	2	0	5	0	0	0	2	0	1	1	12	1	8	0	5	0	1	0	1	0	0	0	0	62	3	
Nurse Aid	0	0	0	0	2	0	0	0	0	0	4	0	0	0	0	0	0	0	8	0	2	0	0	0	0	0	0	16	0	
Midwife	0	0	0	0	0	0	1	0	0	0	1	0	0	0	1	0	1	0	1	0	0	0	0	0	0	0	0	5	0	
Physician Assistants	8	0	1	0	1	0	1	0	0	0	1	0	0	0	0	0	1	0	1	0	0	0	0	0	0	0	0	14	0	
Lab Technician	9	0	1	0	2	0	0	0	1	0	1	0	0	0	0	0	2	0	0	0	10	0	0	0	3	0	0	29	0	
Environmental Health Technicians	5	0	0	0	0	0	0	0	0	0	0	0	0	0	0	0	0	0	0	0	0	0	0	0	0	0	0	5	0	
Dieticians	0	0	7	1	0	0	0	0	0	0	0	0	0	0	0	0	0	0	0	0	0	0	0	0	0	0	0	7	1	
Hospital Cleaner	1	0	0	0	0	0	0	0	0	0	1	0	0	0	1	0	0	0	1	0	2	0	0	0	0	0	0	6	0	
Others*	21	0	0	0	7	0	2	0	2	0	4	0	0	0	4	1	5	0	4	0	1	0	5	0	0	2	0	57	1	
Total:	88	1	12	1	14	0	10	0	3	0	14	0	1	1	19	2	17	0	21	0	16	0	6	0	3	0	2	0	226	5

***Others include the following:**

Radiologist, Microbiologist, Epidemiologist, Dispenser, Licensed Practical Nurse, Psychosocial worker, Hygienist, Logistician, Vaccinator, Ambulance Driver, Procurement Officer, Registrar, Accountant, Secretary, Hospital Administrator, Community Health Volunteer, GIS Specialist, EOC Coordinator, M&E Officer

COVID-19 Status in Liberia by County July 3, 2021



Legend

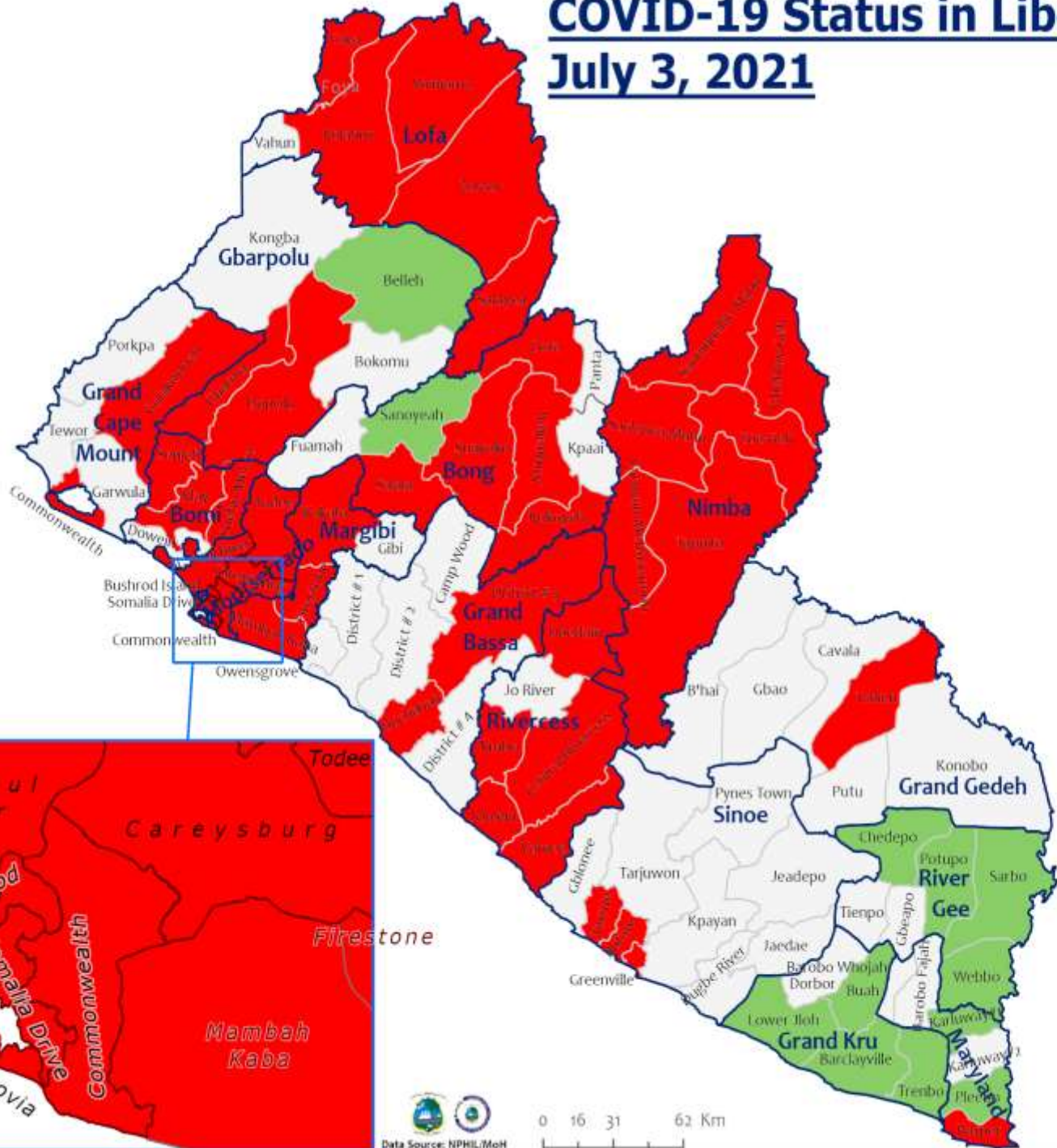
County Status

- Preparedness
- 28-Day Countdown
- Response



COVID-19 Status in Liberia by District

July 3, 2021



Total Cases: 4,870

Affected Counties	Cumulative Cases
Montserrado	3,978
Margibi	218
Nimba	105
Bong	102
Grand Bassa	90
Lofa	84
Bomi	61
Grand Cape Mount	51
Maryland	44
Gbarpolu	38
River Gee	36
Grand Kru	18
Grand Gedeh	17
Rivercess	15
Sinoe	13

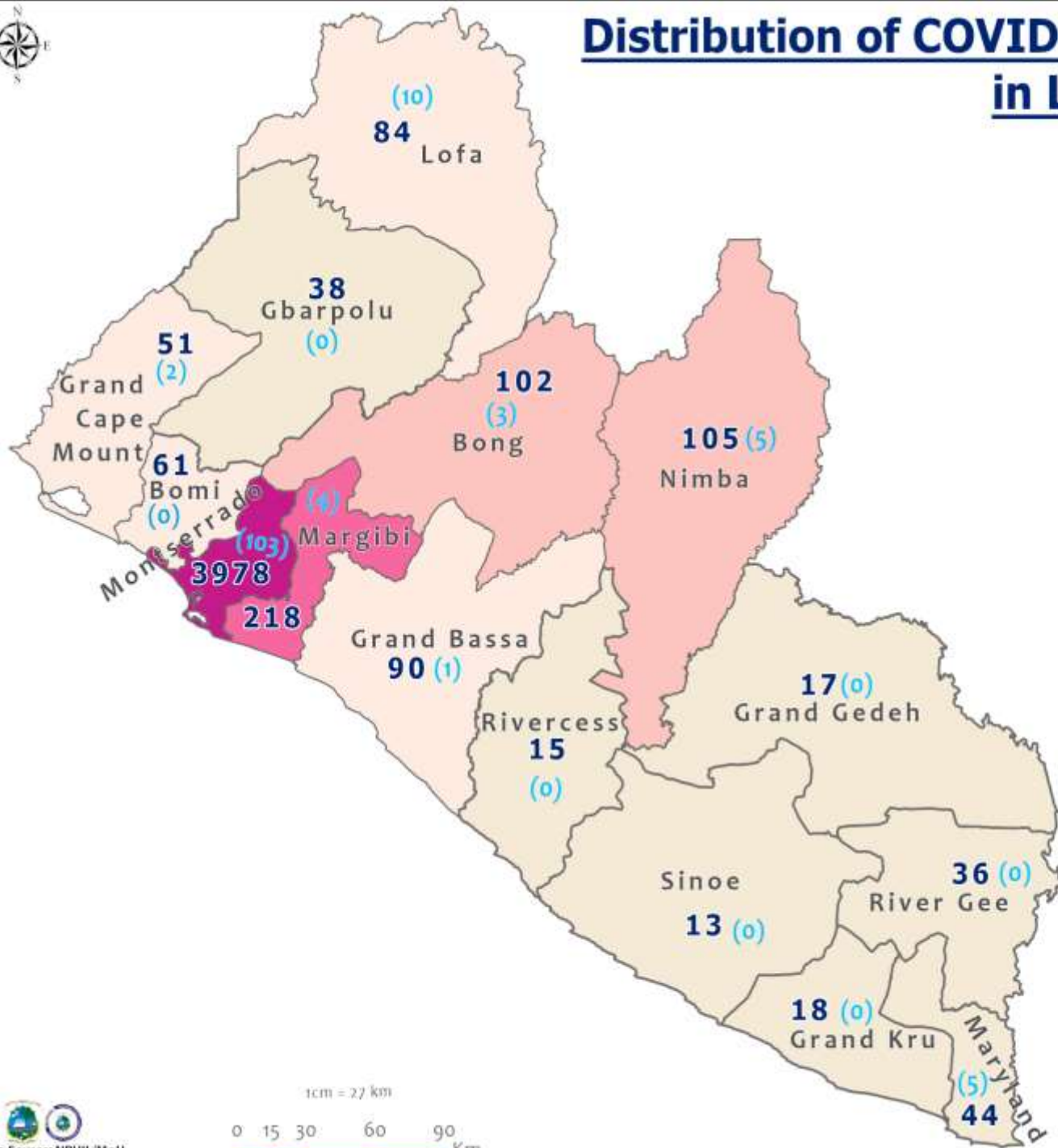
Legend

District Status

- Never had a case
- First time with active case(s)
- With active cases(s)
- With recovered cases only



Distribution of COVID-19 Cases by County in Liberia - July 3, 2021



Total cumulative cases:

4,870

Total new cases:

133

Legend

Number of Cases

- 1-50
- 51-100
- 101-200
- 201-400
- 401-4000

Cumulative cases

New cases

0 (0)

1cm = 27 km

0 15 30 60 90 Km



Summary of confirmed, recovered, active, and dead cases by reporting counties, Liberia, 16 March 2020 – 3 July 2021

County	Confirmed Cases		Recovered Cases		Active Cases	Dead Cases	
	New	Cum	New	Cum		New	Cum
Bomi	0	61	0	27	33	0	1
Bong	3	102	0	50	43	0	8
Gbarpolu	0	38	0	9	27	0	2
Grand Bassa	1	90	0	61	28	0	1
Grand Cape Mount	1	50	0	20	30	0	0
Grand Gedeh	0	17	0	16	1	0	0
Grand Kru	0	18	0	18	0	0	0
Lofa	10	84	0	34	39	0	11
Margibi	4	218	0	107	103	0	8
Maryland	5	44	0	32	10	0	2
Montserrado	104	3979	0	1931	1966	0	82
Nimba	5	105	0	62	28	0	15
Rivercess	0	15	0	3	10	0	2
River Gee	0	36	0	36	0	0	0
Sinoe	0	13	0	5	7	0	1
National	133	4870	0	2411	2325	0	133

Laboratory Samples Evaluated – 3 July 2021

County	Sample Evaluated	New Positive	Repeat Positive	Initial Negative	Repeat Test Negative	Pending Lab Result
Bomi	2	0	0	2	0	0
Bong	4	3	0	1	0	0
Gbarpolu	1	0	0	1	0	0
Grand Bassa	18	1	0	17	0	0
Grand Cape Mount	9	1	0	8	0	0
Grand Gedeh	19	0	0	19	0	0
Lofa	15	10	1	2	2	0
Margibi	33	4	1	28	0	0
Maryland	5	5	0	0	0	0
Montserrado	703	104	22	10	0	10
Nimba	13	5	8	0	0	0
Rivercess	1	0	0	1	0	0
TOTAL	823	133	24	654	0	10
Incoming Traveler	218	8	0	207	0	3
Outgoing Traveler	311	51	10	243	0	7
Voluntary	203	40	13	150	0	0
Post Mortem	1	1	0	0	0	0
County	44	19	1	22	2	3
Medical School	46	14	0	32	0	0
NRL	820	133	24	651	0	10
US-Embassy Lab	3	0	0	3	0	0

Incoming Travelers Testing Positive for COVID-19 (May 1 – ,3 July 2021)*

Country of embarkment	Cases
Ghana	12
UAE	5
USA	5
Nigeria	4
Pakistan	1
Australia	1
Lebanon	1
Canada	1
India	1
Others	12
Total	43

Occupation	Cases
Business	11
Student	5
PFM Consultant	1
Physician	1
Diplomat	1
Nurse Aide	1
Retired	1
Geologist	1
Others	21
Total	43

Nationality	Cases
Liberian	16
American	4
Ghanaian	4
Nigerian	3
Indian	2
Pakistani	1
Lebanese	1
Canadian	1
Australian	1
Others	10
Total	43

Flight	Cases
Kenya Airways	15
ASKY	11
SN Brussels	6
AWA	4
Air France	2
Others	5
Total	43

Summary of COVID-19 Contact Tracing in Response Counties

County	New Contacts Line listed	Cumulative Contacts	No. of Health Care Workers as Contacts	Cumulative no. of Health Care Workers as contacts	Contacts became a case	Cumulative contacts that became a case	Contacts Completed 14 Days	Cumulative Contacts Completing 14 Days	Contacts Under Follow-up	Contacts lost to Follow-up
Montserrado	22	8148	0	686	0	211	84	7073	999	6
Margibi	0	480	0	125	0	42	0	470	278	0
Grand Bassa	0	457	5	145	0	51	0	410	28	0
Sinoe	0	191	0	30	0	1	0	191	0	0
Lofa	0	758	17	103	0	34	0	726	46	0
Nimba	0	613	8	61	0	25	0	550	17	0
Bong	0	302	31	70	0	28	0	300	60	0
Gbarpolu	0	87	1	13	0	8	0	87	42	0
Grand Cape Mount	0	49	0	3	0	4	0	51	14	0
RiverGee	0	123	0	13	0	30	0	123	0	0
Maryland	0	208	0	28	0	19	0	136	7	0
Bomi	0	180	18	35	0	15	0	177	67	0
Rivercess	0	102	1	56	0	0	0	88	10	0
Grand Kru	0	333	0	131	0	17	0	330	0	0
Grand Gedeh	0	163	0	49	0	6	0	125	0	0
National	22	12194	81	1548	0	491	84	10837	1568	6

Thank you for Listening