



Liberia COVID-19 Daily Sitrep 474 (July 2, 2021)

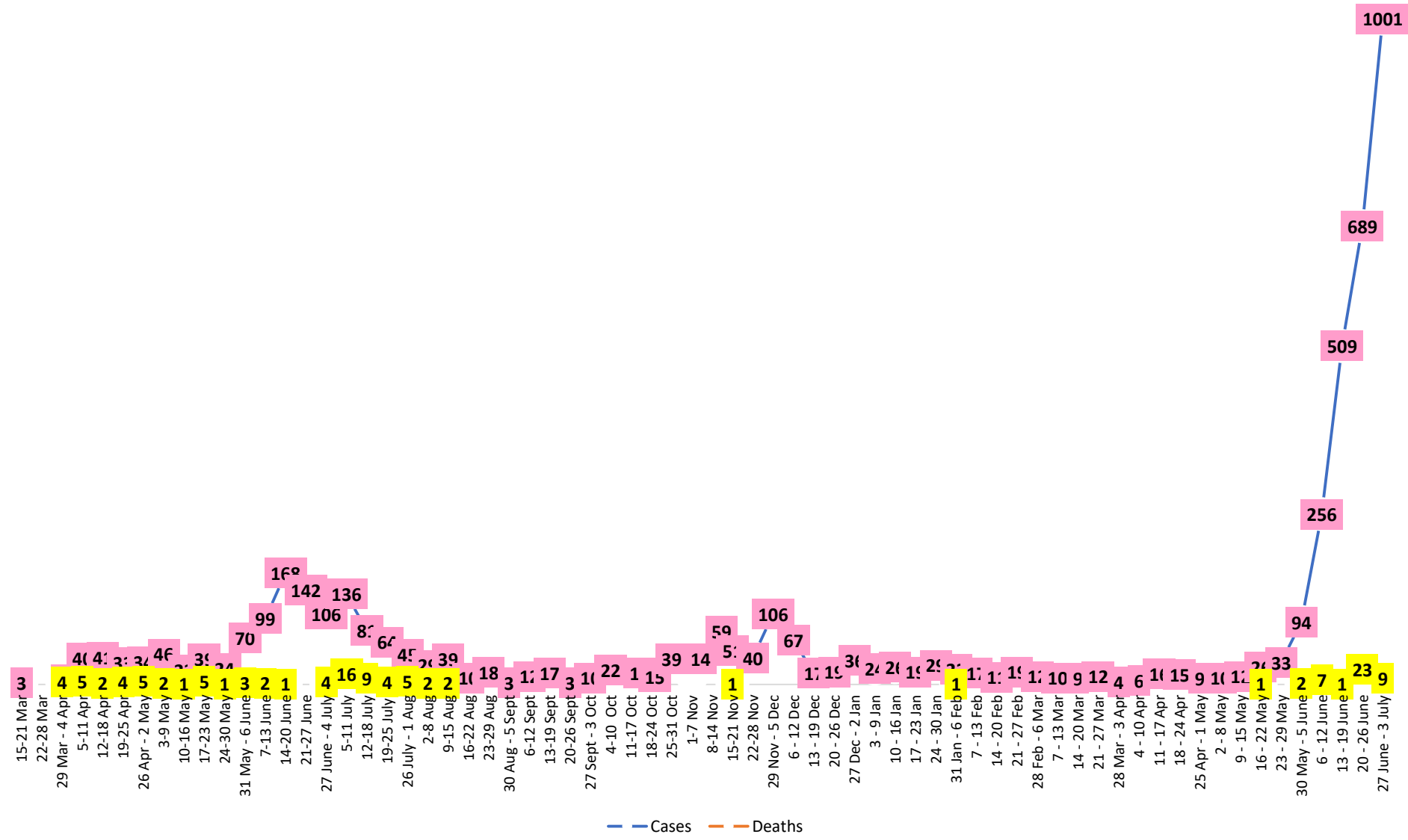
Summary of COVID-19 Cases by Reporting County, Liberia, 16 March 2020 – 2 July 2021

County	Laboratory Confirmed Cases	Confirmed Cases on Contact List	Confirmed Cumulative Cases
Bomi	16	0	61
Bong	0	0	99
Gbarpolu	0	0	38
Grand Bassa	5	0	89
Grand Cape Mount	2	0	49
Grand Kru	0	0	18
Grand Gedeh	0	0	17
Lofa	0	0	74
Margibi	11	0	214
Maryland	0	0	39
Montserrado	178	0	3875
Nimba	4	0	100
Rivercess	2	0	15
River Gee	0	0	36
Sinoe	1	0	13
NATIONAL	219	0	4737

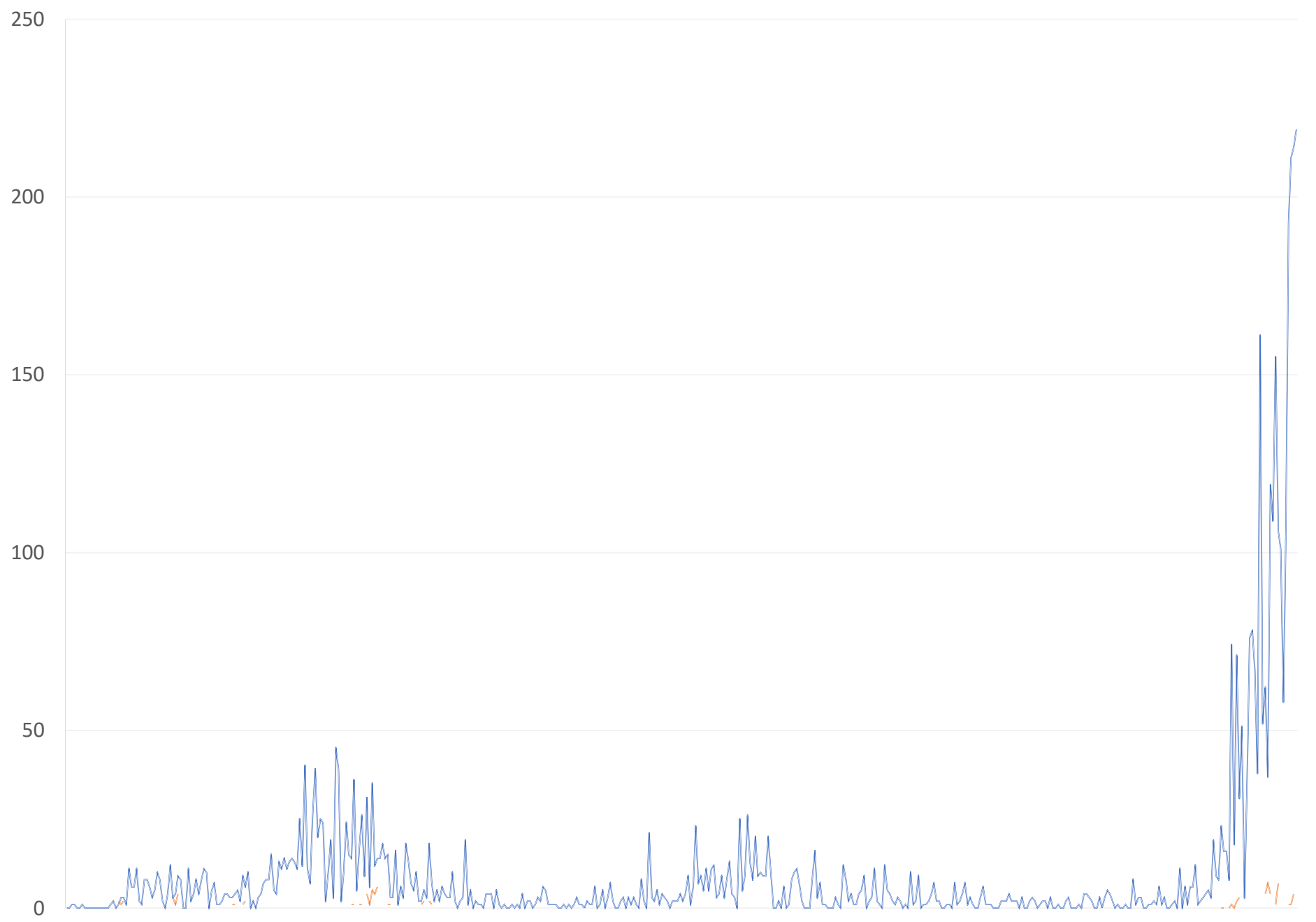
Demographic Breakdown (Gender & Age) of Confirmed COVID-19 Cases (16 March 2020 – 2 June 2021)

County	<15 years		15 - 34		35 - 54		55+		All ages		Total Confirmed
	M	F	M	F	M	F	M	F	M	F	
Bomi	2	2	7	12	25	9	2	2	36	25	61
Bong	3	2	11	10	40	13	13	7	67	32	99
Gbarpolu	1	2	9	4	16	4	2	0	28	10	38
Grand Bassa	14	6	14	14	19	11	8	3	55	34	89
Grand Cape Mount	1	0	19	0	26	0	3	0	49	0	49
Grand Kru	0	0	2	5	4	5	2	0	8	10	18
Grand Gedeh	0	1	1	2	7	4	2	0	10	7	17
Lofa	8	5	10	10	21	7	9	4	48	26	74
Margibi	7	6	30	21	68	32	37	13	142	72	214
Maryland	2	0	10	6	11	6	2	2	25	14	39
Montserrado	91	85	788	514	1141	518	454	284	2474	1401	3875
Nimba	1	4	15	13	36	13	13	5	65	35	100
Rivercess	0	0	2	3	5	2	2	1	9	6	15
River Gee	0	0	4	3	19	5	5	0	28	8	36
Sinoe	0	0	1	0	11	1	0	0	12	1	13
National	130	113	923	617	1449	630	554	321	3056	1681	4737

COVID-19 WEEKLY EPI-CURVE



Daily Cases Daily Deaths



Summary of COVID-19 Deaths by Reporting County, Liberia, 16 March 2020 – 2 July 2021

County	new Suspected Deaths	COVID-19 Treatment Unit	Total in COVID-19 Treatment Unit	Health Facility	Total in Health Facility	Community	Total in Community	Confirmed Deaths on Contact List	Cumulative Deaths
Bomi	0	0	0	0	1	0	0	0	1
Bong	0	0	0	0	7	0	1	0	8
Gbarpolu	0	0	0	0	2	0	0	0	2
Grand Bassa	0	0	0	0	1	0	0	0	1
Grand Cape Mount	0	0	0	0	0	0	0	0	0
Grand Gedeh	0	0	0	0	0	0	0	0	0
Grand Kru	0	0	0	0	0	0	0	0	0
Lofa	0	0	0	0	6	0	5	0	11
Maryland	0	0	0	0	2	0	0	0	2
Margibi	0	0	2	0	6	0	0	0	8
Montserrado	0	2	26	0	38	2	18	0	82
Nimba	0	0	2	0	9	0	4	0	15
Rivercess	0	0	0	0	1	0	1	0	2
River Gee	0	0	0	0	0	0	0	0	0
Sinoe	0	0	0	0	1	0	0	0	1
National	0	2	30	0	74	2	29	0	133

Daily and Cumulative Healthcare Worker (HCW) COVID-19 Cases and Deaths by County, Liberia, 16 March 2020 – 2 July 2021

County	DAILY REPORT						CUMULATIVE CASES (ALIVE & DEAD)	
	New Suspected & High Risk Cases (Alive)			New Suspect Death	Laboratory Confirmed Cases	Confirmed Cases on Contact List	Confirmed	Deaths
	Suspect	High Risk	Total					
Bomi	0	0	0	0	0	0	8	0
Bong	0	0	0	0	0	0	21	4
Gbarpolu	0	0	0	0	0	0	1	0
Grand Bassa	0	0	0	0	0	0	21	0
Grand Gedeh	0	0	0	0	0	0	2	0
Grand Kru	0	0	0	0	0	0	14	0
Lofa	0	0	0	0	0	0	17	0
Margibi	0	0	0	0	0	0	12	1
Maryland	0	0	0	0	0	0	16	0
Montserrado	0	0	0	0	0	0	88	1
Nimba	0	0	0	0	0	0	15	0
Rivercess	0	0	0	0	0	0	3	0
River Gee	0	0	0	0	0	0	10	0
Sinoe	0	0	0	0	0	0	3	0
NATIONAL	0	0	0	0	0	0	231	6

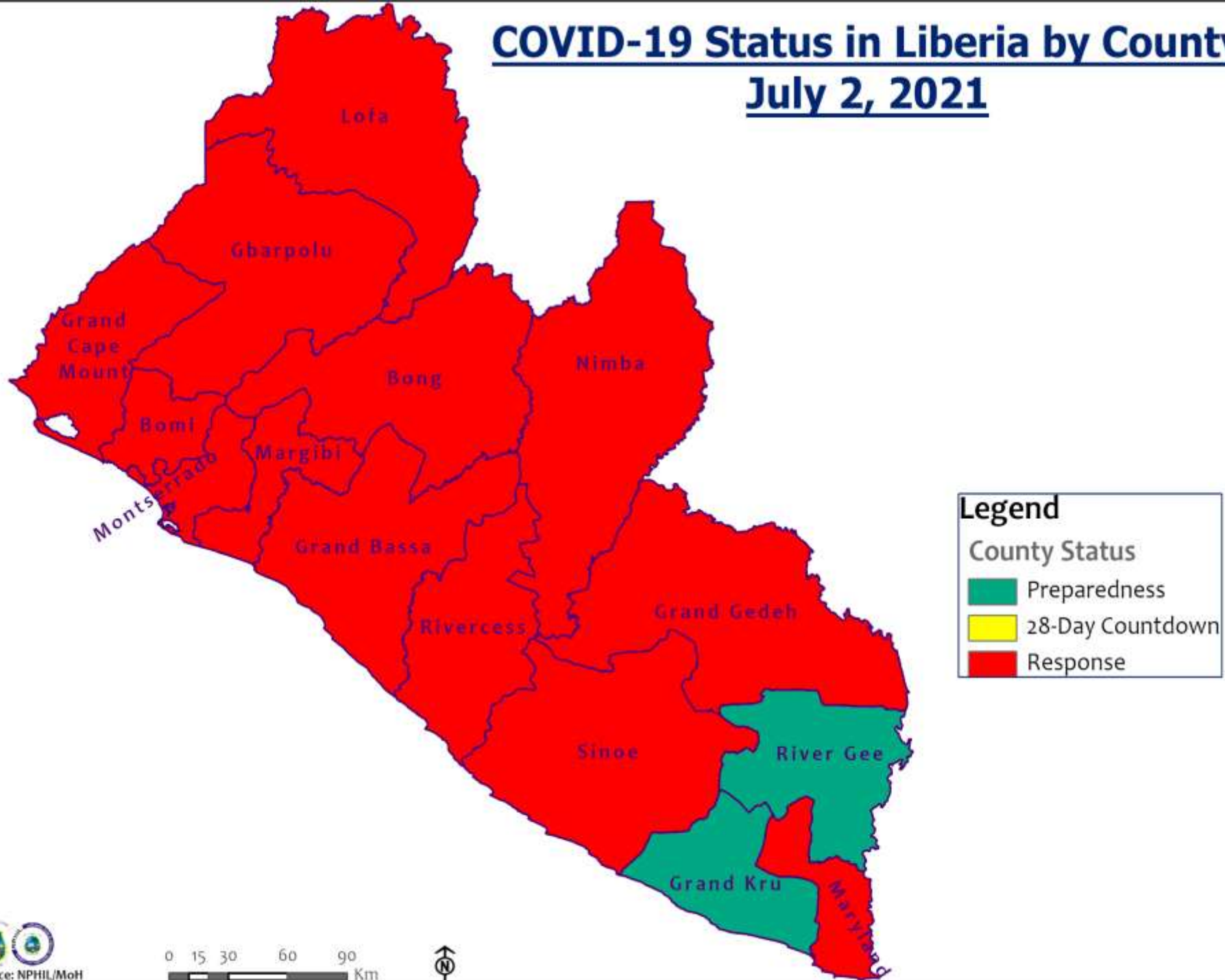
Cadre Cases and Deaths by Health Care Workers (16 March 2020 – 2 July 2021)

Health Care Worker Cadre	Montserratado		Margibi		Nimba		River Gee		Sinoe		Grand Kru		Gbarpolu		Bong		Lofa		Grand Bassa		Maryland		Bomi		Rivercess		Grand Gedeh		National (Total)	
	Cases	Deaths	Cases	Deaths	Cases	Deaths	Cases	Deaths	Cases	Deaths	Cases	Deaths	Cases	Deaths	Cases	Deaths	Cases	Deaths	Cases	Deaths	Cases	Deaths	Cases	Deaths	Cases	Deaths	Cases	Deaths	Cases	Deaths
Doctors	17	0	1	0	0	0	1	0	0	0	0	0	0	0	1	0	0	0	1	0	0	0	0	0	0	0	0	0	21	0
Pharmacists	4	0	0	0	0	0	0	0	0	0	0	0	0	0	0	0	0	0	0	0	0	0	0	0	0	0	0	4	0	
Nurses	23	1	2	0	2	0	5	0	0	0	2	0	1	1	12	1	8	0	5	0	1	0	1	0	0	0	0	62	3	
Nurse Aid	0	0	0	0	2	0	0	0	0	0	4	0	0	0	0	0	0	0	8	0	2	0	0	0	0	0	0	16	0	
Midwife	0	0	0	0	0	0	1	0	0	0	1	0	0	0	1	0	1	0	1	0	0	0	0	0	0	0	0	5	0	
Physician Assistants	8	0	1	0	1	0	1	0	0	0	1	0	0	0	0	0	1	0	1	0	0	0	0	0	0	0	0	14	0	
Lab Technician	9	0	1	0	2	0	0	0	1	0	1	0	0	0	0	0	2	0	0	0	10	0	0	0	3	0	0	29	0	
Environmental Health Technicians	5	0	0	0	0	0	0	0	0	0	0	0	0	0	0	0	0	0	0	0	0	0	0	0	0	0	0	5	0	
Dieticians	0	0	7	1	0	0	0	0	0	0	0	0	0	0	0	0	0	0	0	0	0	0	0	0	0	0	0	7	1	
Hospital Cleaner	1	0	0	0	0	0	0	0	0	0	1	0	0	0	1	0	0	0	1	0	2	0	0	0	0	0	0	6	0	
Others*	21	0	0	0	7	0	2	0	2	0	4	0	0	0	4	1	5	0	4	0	1	0	5	0	0	2	0	57	1	
Total:	88	1	12	1	14	0	10	0	3	0	14	0	1	1	19	2	17	0	21	0	16	0	6	0	3	0	2	0	226	5

***Others include the following:**

Radiologist, Microbiologist, Epidemiologist, Dispenser, Licensed Practical Nurse, Psychosocial worker, Hygienist, Logistician, Vaccinator, Ambulance Driver, Procurement Officer, Registrar, Accountant, Secretary, Hospital Administrator, Community Health Volunteer, GIS Specialist, EOC Coordinator, M&E Officer

COVID-19 Status in Liberia by County July 2, 2021



Legend

County Status

- Preparedness
- 28-Day Countdown
- Response



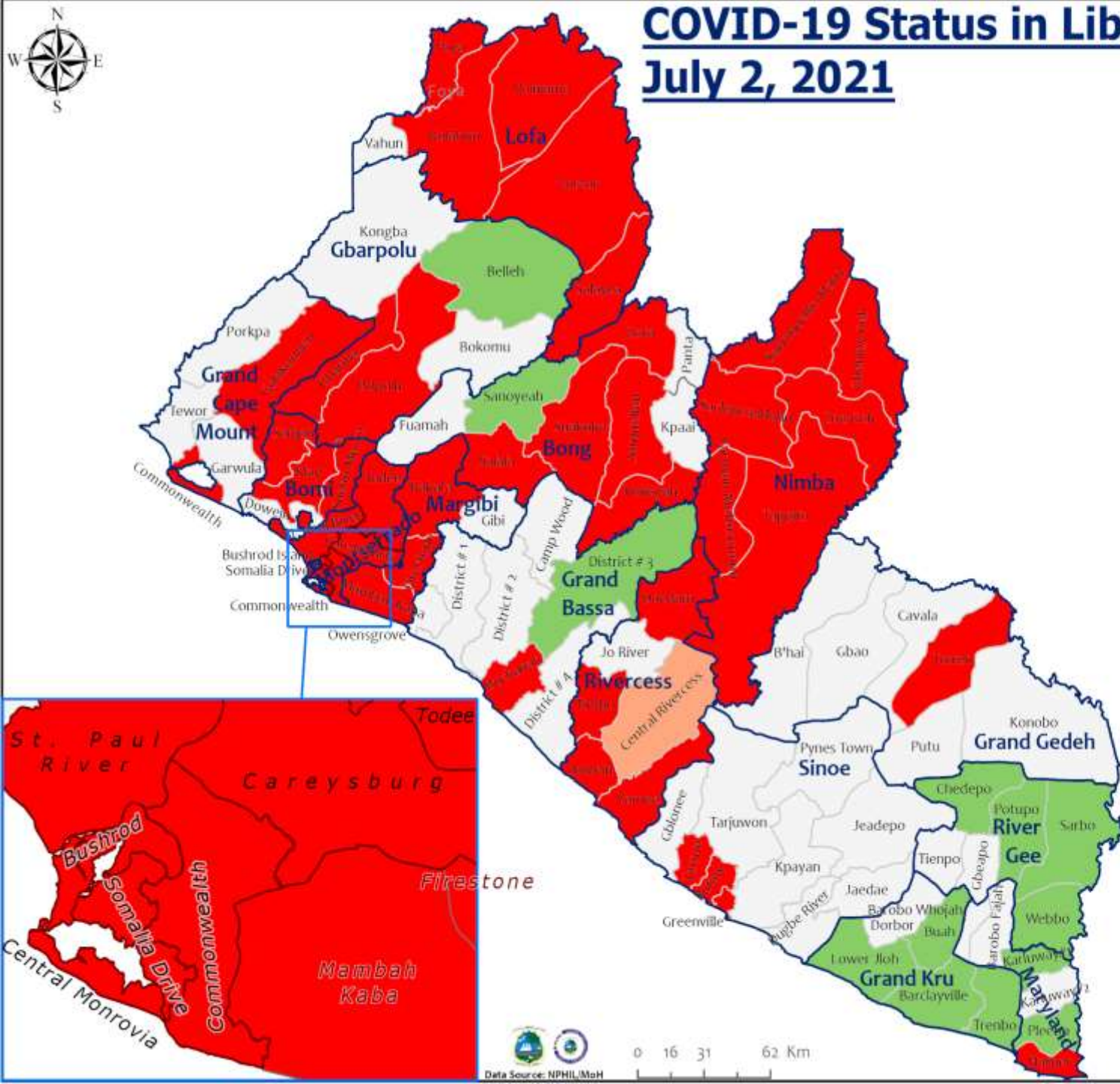
COVID-19 Status in Liberia by District

July 2, 2021



Total Cases: 4,737

Affected Counties	Cumulative Cases
Montserrado	3,875
Margibi	214
Nimba	100
Bong	99
Grand Bassa	89
Lofa	74
Bomi	61
Grand Cape	49
Mount	49
Maryland	39
Gbarpolu	38
River Gee	36
Grand Kru	18
Grand Gedeh	17
Rivercess	15
Sinoe	13

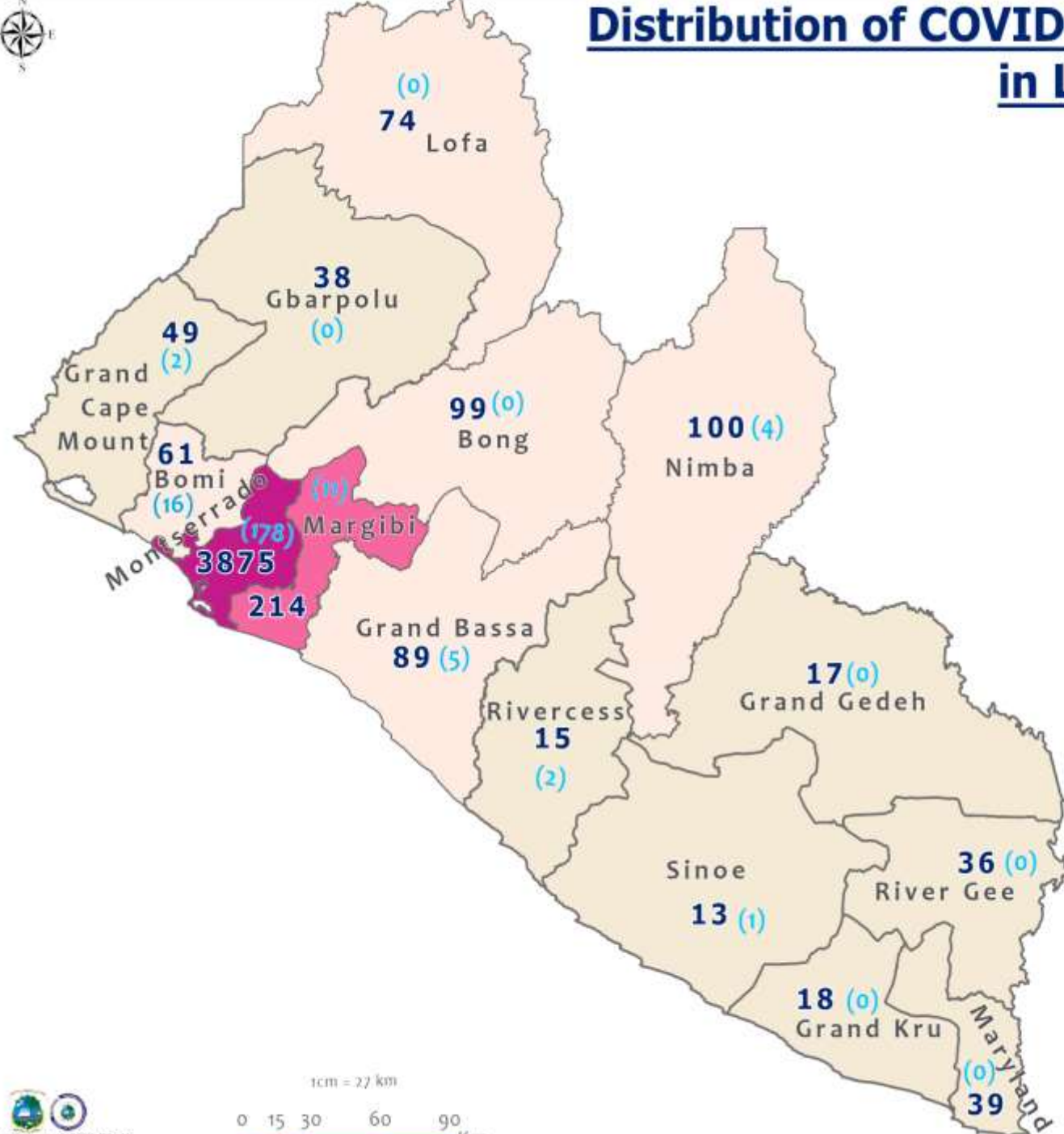


Legend

District Status

- Never had a case
- First time with active case(s)
- With active cases(s)
- With recovered cases only

Distribution of COVID-19 Cases by County in Liberia - July 2, 2021



Total cumulative cases:

4,737

Total new cases:

219

Legend

Number of Cases

- 1 - 50
- 51 - 100
- 101 - 200
- 201 - 400
- 401 - 4000

Cumulative cases

New cases

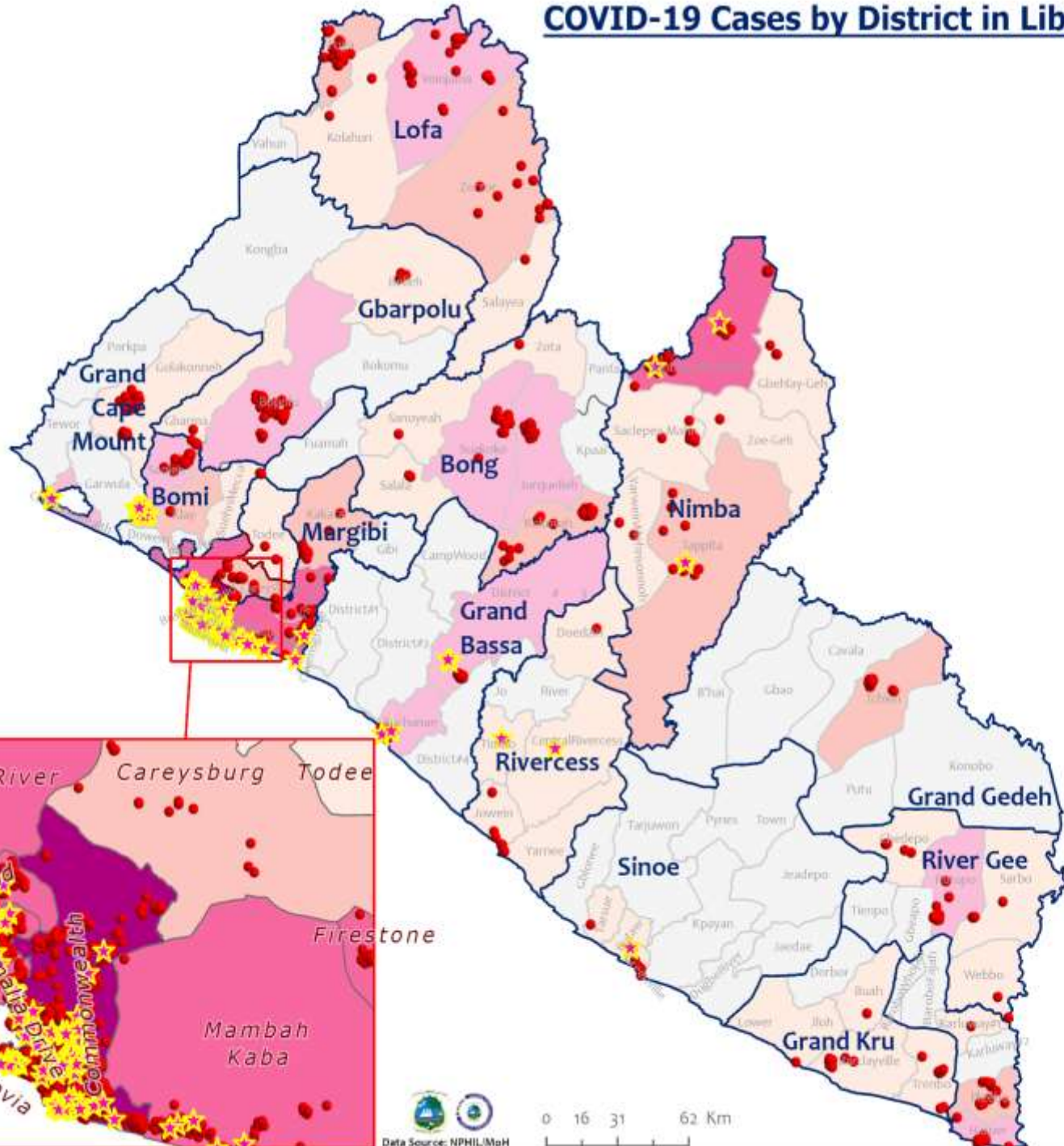
0 (0)

1cm = 27 km

0 15 30 60 90 Km



COVID-19 Cases by District in Liberia - July 2, 2021



Total Cases: 4,737

Affected Counties	Cumulative Cases
Montserrado	3,875
Margibi	214
Nimba	100
Bong	99
Grand Bassa	89
Lofa	74
Bomi	61
Grand Cape Mount	49
Maryland	39
Gbarpolu	38
River Gee	36
Grand Kru	18
Grand Gedeh	17
Rivercess	15
Sinoe	13

Legend

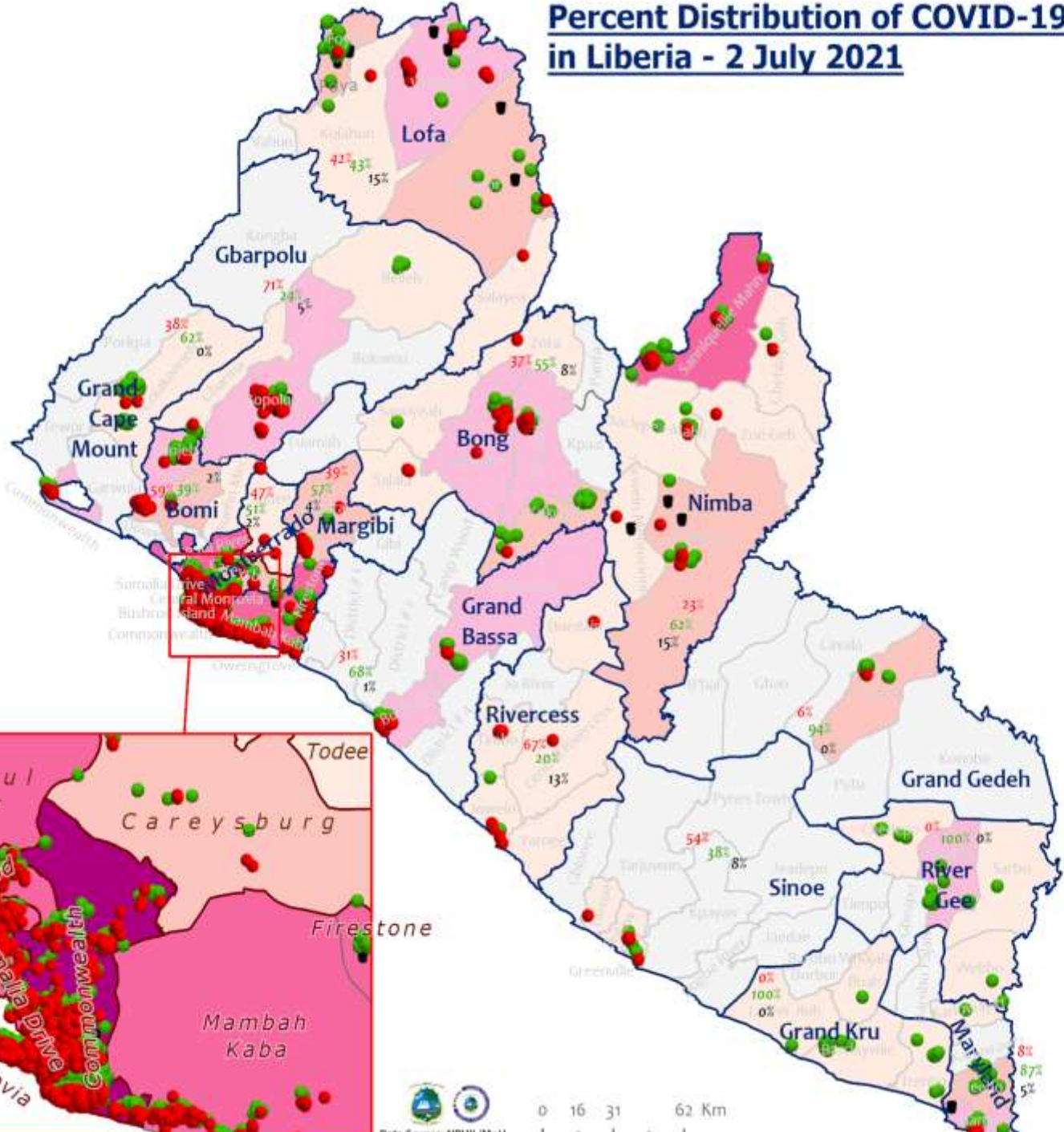
Case Status

- ★ New confirmed case
- Confirmed cases

Cases / District

- 0
- 1-10
- 11-20
- 21-50
- 51-500
- 501-1400
- 1401-2400

Percent Distribution of COVID-19 Cases by Status in Liberia - 2 July 2021



Total Cases: 4,737

Affected Counties	Cumulative Cases
Montserrado	3,875
Margibi	214
Nimba	100
Bong	99
Grand Bassa	89
Lofa	74
Boni	61
Grand Cape Mount	49
Mount	49
Maryland	39
Gbarpolu	38
River Gee	36
Grand Kru	18
Grand Gedeh	17
Rivercess	15
Sinoe	13

Legend

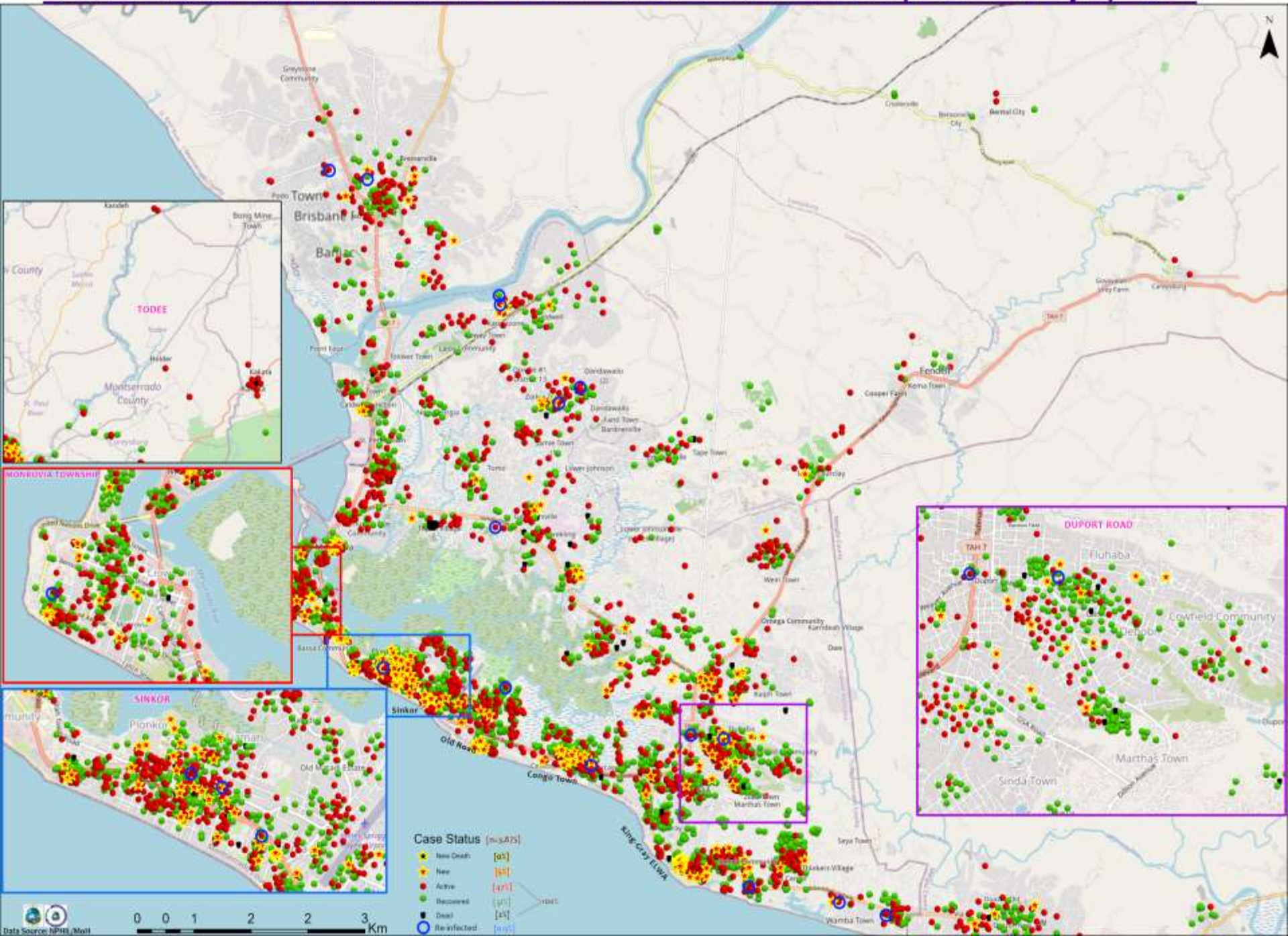
Case Status

- Active [41]
- Recovered [56%]
- Dead [3%]

Cases / District

- 0
- 1-10
- 11-20
- 21-50
- 51-500
- 501-1400
- 1401-2400

Distribution of COVID-19 Cases in Montserrado Communities, Liberia July 2, 2021



Summary of confirmed, recovered, active, and dead cases by reporting counties, Liberia, 16 March 2020 – 2 July 2021

County	Confirmed Cases		Recovered Cases		Active Cases	Dead Cases	
	New	Cum	New	Cum		New	Cum
Bomi	16	61	0	27	33	0	1
Bong	0	99	0	50	41	0	8
Gbarpolu	0	38	0	9	27	0	2
Grand Bassa	5	89	0	61	27	0	1
Grand Cape Mount	2	49	0	20	29	0	0
Grand Gedeh	0	17	0	16	1	0	0
Grand Kru	0	18	0	18	0	0	0
Lofa	0	74	0	34	29	0	11
Margibi	11	214	0	107	99	0	8
Maryland	0	39	0	32	5	0	2
Montserrado	178	3875	0	1931	1862	0	82
Nimba	4	100	0	62	23	0	15
Rivercess	2	15	0	3	10	0	2
River Gee	0	36	0	36	0	0	0
Sinoe	1	13	0	5	7	0	1
National	219	4737	0	2411	2193	0	133

Home-Base Care of COVID-19 – July 2, 2021

County	New Admissions	Currently in Admissions	No. Followed-up (In-person/Phone)	Cumulative Admissions	New Recoveries	Cumulative Recoveries	Referrals to TU	Cumulative Referrals to TU	New Death	Cumulative Deaths
Montserratado	0	341	180	925	66	555	0	29	0	0
Nimba				0						
Bong				0						
Maryland										
Cape Mount										
Lofa										
Margibi				0						
Total:	0	341	180	925	66	555	0	29	0	0

Laboratory Samples Evaluated – 2 July 2021

County	Sample Evaluated	New Positive	Repeat Positive	Initial Negative	Repeat Test Negative	Pending Lab Result
Bomi	21	16	1	2	0	2
Bong	2	0	1	1	0	0
Grand Bassa	15	5	5	4	0	1
Grand Cape Mount	8	2	0	6	0	0
Grand Gedeh	1	0	0	1	0	0
Margibi	25	11	0	13	0	0
Montserrado	504	178	21	293	0	12
Nimba	4	4	0	0	0	0
Rivercess	3	2	0	0	0	1
Sinoe	1	1	0	0	0	0
TOTAL	584	219	28	320	0	17
Incoming Traveler	213	107	0	104	0	0
Outgoing Traveler	257	72	18	154	0	13
Voluntary	76	16	7	52	0	1
Self Isolation	3	0	0	3	0	0
County	28	22	1	2	0	3
Suspected	1	0	0	1	0	0
Health facility	6	2	0	4	0	0
NRL	506	213	28	248	0	17
UN Clinic	24	0	0	24	0	0
US-Embassy Lab	1	0	0	1	0	0
PREVAIL-JFK	49	4	0	45	0	0
PREVAIL-STAR Base	4	2	0	2	0	0

Incoming Travelers Testing Positive for COVID-19 (May 1 – 2, July 2021)

Country of embarkment	Cases
Ghana	12
UAE	5
USA	5
Nigeria	4
Pakistan	1
Australia	1
Lebanon	1
Canada	1
India	1
Others	12
Total	43

Occupation	Cases
Business	11
Student	5
PFM Consultant	1
Physician	1
Diplomat	1
Nurse Aide	1
Retired	1
Geologist	1
Others	21
Total	43

Nationality	Cases
Liberian	16
American	4
Ghanaian	4
Nigerian	3
Indian	2
Pakistani	1
Lebanese	1
Canadian	1
Australian	1
Others	10
Total	43

Flight	Cases
Kenya Airways	15
ASKY	11
SN Brussels	6
AWA	4
Air France	2
Others	5
Total	43

Summary of COVID-19 Contact Tracing in Response Counties

County	New Contacts Line listed	Cumulative Contacts	No. of Health Care Workers as Contacts	Cumulative no. of Health Care Workers as contacts	Contacts became a case	Cumulative contacts that became a case	Contacts Completed 14 Days	Cumulative Contacts Completing 14 Days	Contacts Under Follow-up	Contacts lost to Follow-up
Montserrado	22	8148	0	686	0	211	84	7073	999	6
Margibi	0	480	0	125	0	42	0	470	278	0
Grand Bassa	0	457	5	145	0	51	0	410	28	0
Sinoe	0	191	0	30	0	1	0	191	0	0
Lofa	0	758	17	103	0	34	0	726	46	0
Nimba	0	613	8	61	0	25	0	550	17	0
Bong	0	302	31	70	0	28	0	300	60	0
Gbarpolu	0	87	1	13	0	8	0	87	42	0
Grand Cape Mount	0	49	0	3	0	4	0	51	14	0
RiverGee	0	123	0	13	0	30	0	123	0	0
Maryland	0	208	0	28	0	19	0	136	7	0
Bomi	0	180	18	35	0	15	0	177	67	0
Rivercess	0	102	1	56	0	0	0	88	10	0
Grand Kru	0	333	0	131	0	17	0	330	0	0
Grand Gedeh	0	163	0	49	0	6	0	125	0	0
National	22	12194	81	1548	0	491	84	10837	1568	6

Thank you for Listening