



Liberia COVID-19 Daily Sitrep 469 (June 27, 2021)

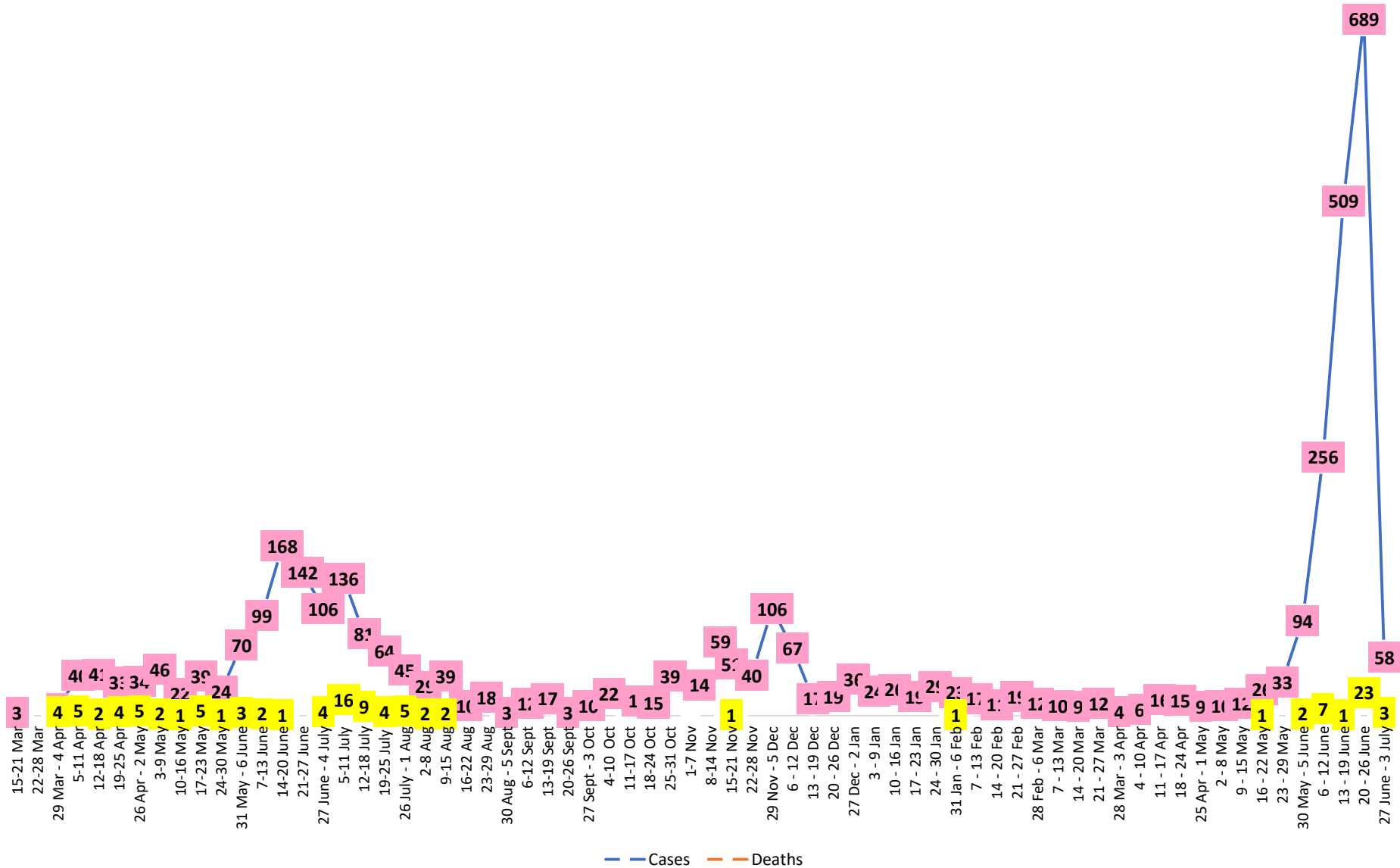
Summary of COVID-19 Cases by Reporting County, Liberia, 16 March 2020 – 27 June 2021

County	Laboratory Confirmed Cases	Confirmed Cases on Contact List	Confirmed Cumulative Cases
Bomi	10	0	45
Bong	0	0	81
Gbarpolu	0	0	26
Grand Bassa	0	0	81
Grand Cape Mount	1	0	33
Grand Kru	0	0	18
Grand Gedeh	0	0	16
Lofa	0	0	62
Margibi	1	0	157
Maryland	0	0	37
Montserrado	45	0	3095
Nimba	1	0	86
Rivercess	0	0	13
River Gee	0	0	36
Sinoe	0	0	8
NATIONAL	58	0	3794

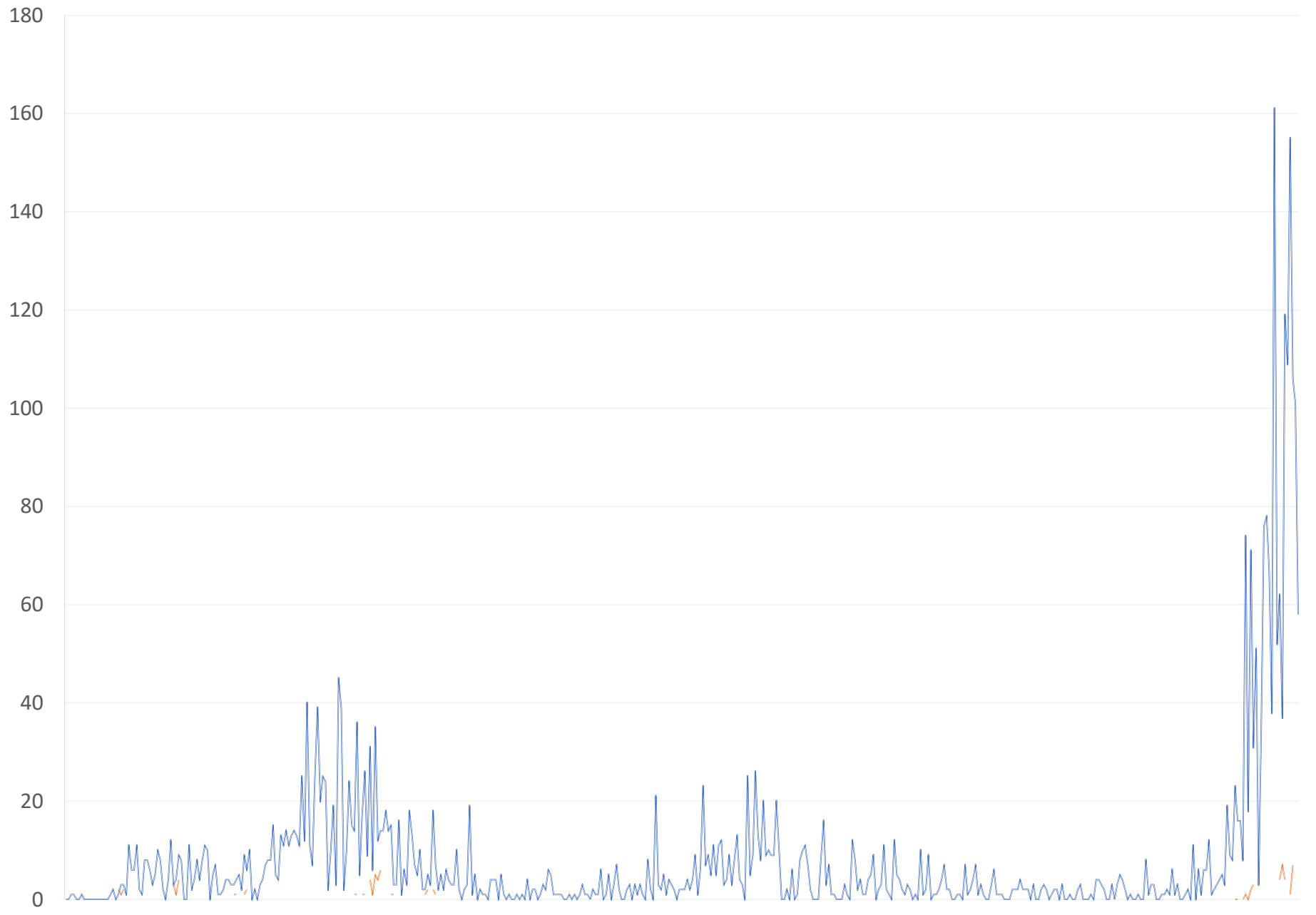
Demographic Breakdown (Gender & Age) of Confirmed COVID-19 Cases (16 March 2020 – 27 June 2021)

County	<15 years		15 - 34		35 - 54		55+		All ages		Total Confirmed
	M	F	M	F	M	F	M	F	M	F	
Bomi	2	2	7	9	13	9	1	2	23	22	45
Bong	3	1	10	9	28	12	13	5	54	27	81
Gbarpolu	1	2	5	4	8	4	2	0	16	10	26
Grand Bassa	14	4	13	13	18	10	6	3	51	30	81
Grand Cape Mount	0	0	14	0	17	0	2	0	33	0	33
Grand Kru	0	0	2	5	4	5	2	0	8	10	18
Grand Gedeh	0	1	1	2	7	3	2	0	10	6	16
Lofa	6	4	9	9	17	6	8	3	40	22	62
Margibi	7	6	24	16	46	21	25	12	102	55	157
Maryland	2	0	10	6	10	5	2	2	24	13	37
Montserrado	76	76	618	423	895	424	363	220	1952	1143	3095
Nimba	1	4	15	12	31	9	9	5	56	30	86
Rivercess	0	0	2	3	4	2	2	0	8	5	13
River Gee	0	0	4	3	19	5	5	0	28	8	36
Sinoe	0	0	1	0	6	1	0	0	7	1	8
National	112	100	735	514	1123	516	442	252	2412	1382	3794

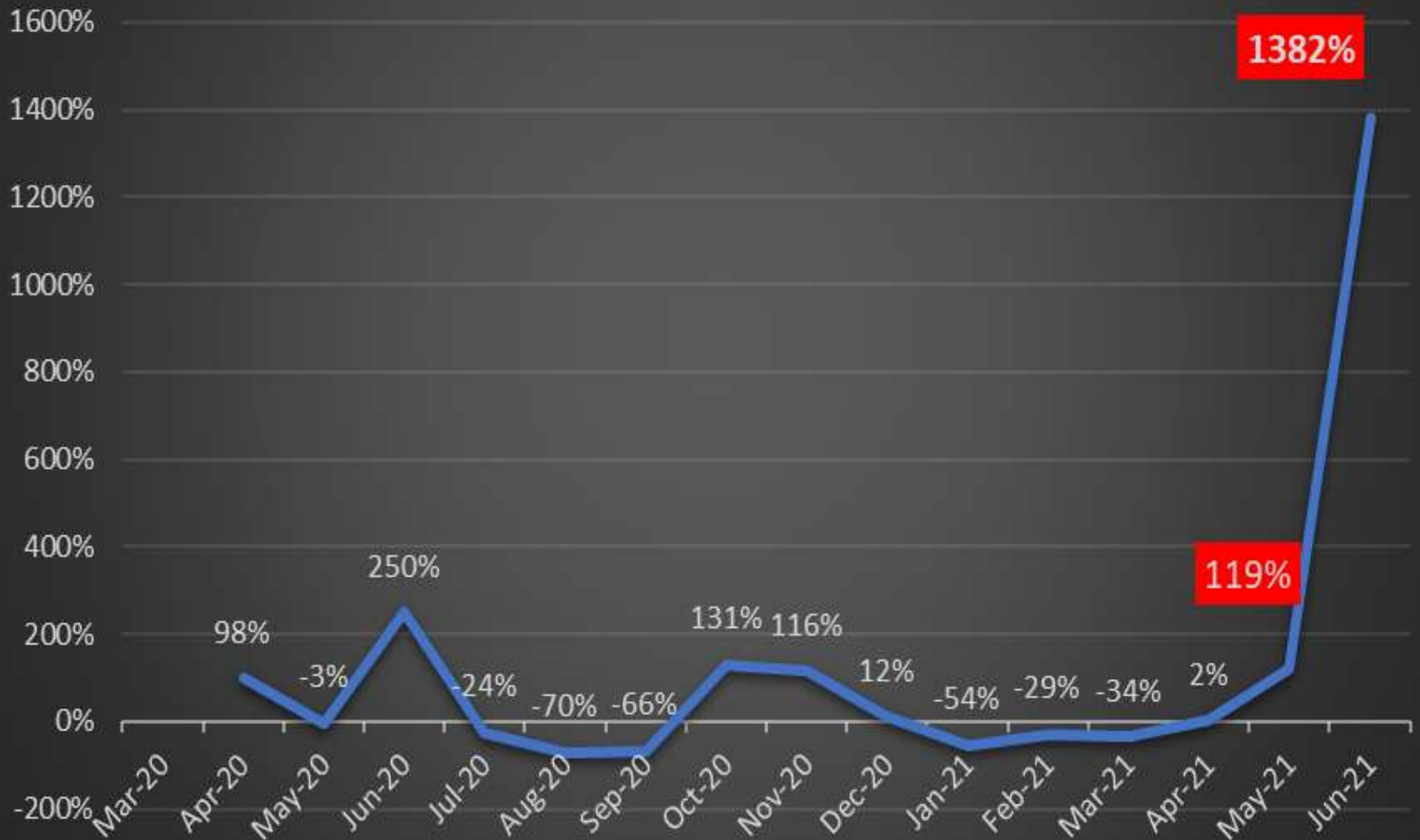
COVID-19 WEEKLY EPI-CURVE



Daily Cases Daily Deaths



Monthly % Changes of COVID-19 Cases in Liberia, March 16, 2020- June 26, 2021



Summary of COVID-19 Deaths by Reporting County, Liberia, 16 March 2020 – 27 June 2021

County	New Suspected Deaths	COVID-19 Treatment Unit	Total in COVID-19 Treatment Unit	Health Facility	Total in Health Facility	Community	Total in Community	Confirmed Deaths on Contact List	Cumulative Deaths
Bomi	0	0	0	0	1	0	0	0	1
Bong	0	0	0	0	7	0	1	0	8
Gbarpolu	0	0	0	0	2	0	0	0	2
Grand Bassa	0	0	0	0	1	0	0	0	1
Grand Cape Mount	0	0	0	0	0	0	0	0	0
Grand Gedeh	0	0	0	0	0	0	0	0	0
Grand Kru	0	0	0	0	0	0	0	0	0
Lofa	0	0	0	0	6	0	5	0	11
Maryland	0	0	0	0	2	0	0	0	2
Margibi	0	0	2	0	6	0	0	0	8
Montserrado	0	3	22	0	34	0	16	0	72
Nimba	0	0	2	0	9	0	4	0	15
Rivercess	0	0	0	0	1	0	1	0	2
River Gee	0	0	0	0	0	0	0	0	0
Sinoe	0	0	0	0	1	0	0	0	1
National	0	3	26	0	70	0	27	0	123

Daily and Cumulative Healthcare Worker (HCW) COVID-19 Cases and Deaths by County, Liberia, 16 March 2020 – 27 June 2021

County	DAILY REPORT						CUMULATIVE CASES (ALIVE & DEAD)	
	New Suspected & High Risk Cases (Alive)			New Suspect Death	Laboratory Confirmed Cases	Confirmed Cases on Contact List	Confirmed	Deaths
	Suspect	High Risk	Total					
Bomi	0	0	0	0	0	0	8	0
Bong	0	0	0	0	0	0	21	4
Gbarpolu	0	0	0	0	0	0	1	0
Grand Bassa	0	0	0	0	0	0	21	0
Grand Gedeh	0	0	0	0	0	0	2	0
Grand Kru	0	0	0	0	0	0	14	0
Lofa	0	0	0	0	0	0	17	0
Margibi	0	0	0	0	0	0	12	1
Maryland	0	0	0	0	0	0	16	0
Montserrado	0	0	0	0	0	0	88	1
Nimba	0	0	0	0	0	0	15	0
Rivercess	0	0	0	0	0	0	3	0
River Gee	0	0	0	0	0	0	10	0
Sinoe	0	0	0	0	0	0	3	0
NATIONAL	0	0	0	0	0	0	231	6

Cadre Cases and Deaths by Health Care Workers (16 March 2020 – 27 June 2021)

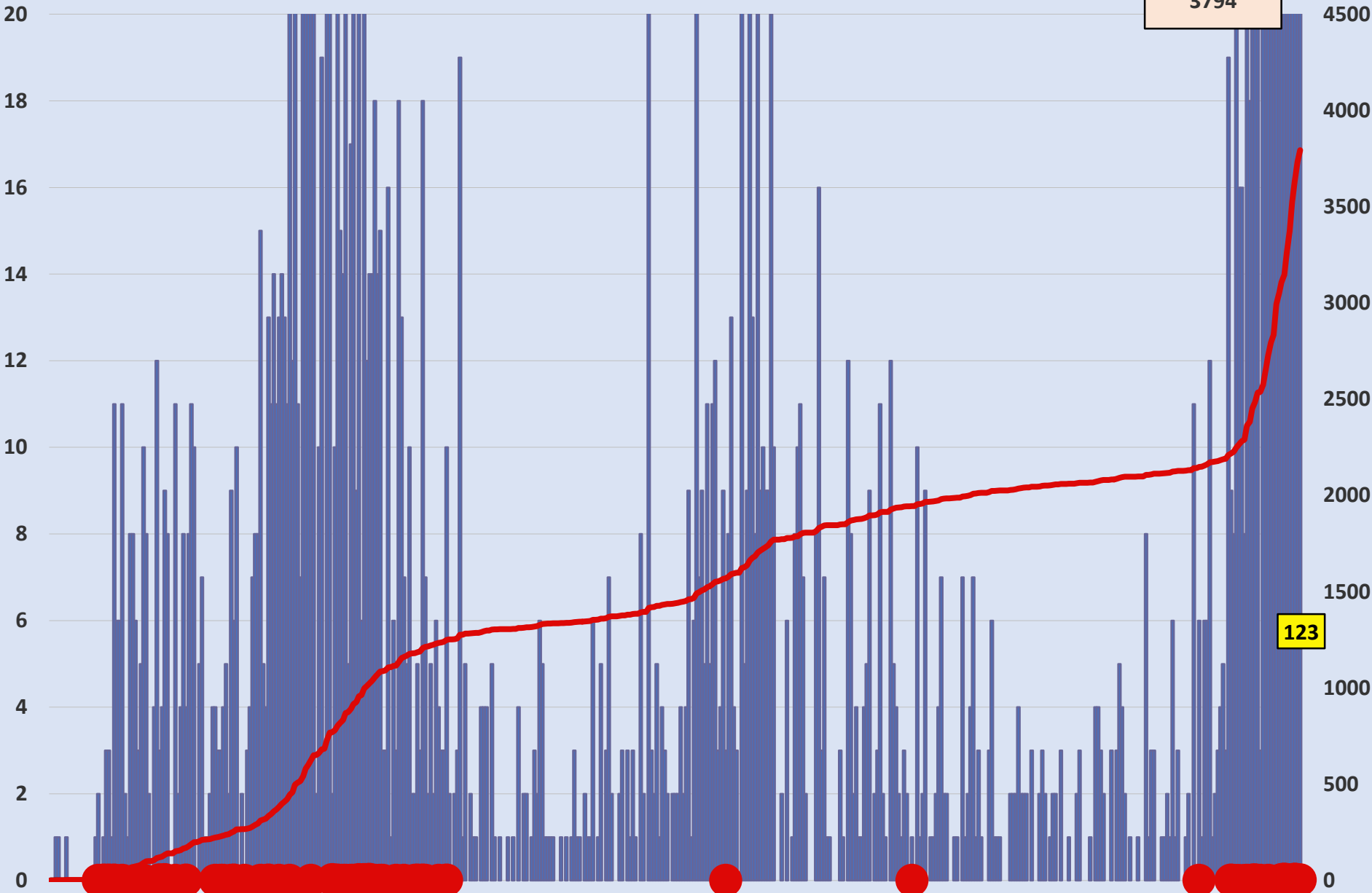
Health Care Worker Cadre	Montserratado		Margibi		Nimba		River Gee		Sinoe		Grand Kru		Gbarpolu		Bong		Lofa		Grand Bassa		Maryland		Bomi		Rivercess		Grand Gedeh		National (Total)	
	Cases	Deaths	Cases	Deaths	Cases	Deaths	Cases	Deaths	Cases	Deaths	Cases	Deaths	Cases	Deaths	Cases	Deaths	Cases	Deaths	Cases	Deaths	Cases	Deaths	Cases	Deaths	Cases	Deaths	Cases	Deaths	Cases	Deaths
Doctors	17	0	1	0	0	0	1	0	0	0	0	0	0	0	1	0	0	0	1	0	0	0	0	0	0	0	0	21	0	
Pharmacists	4	0	0	0	0	0	0	0	0	0	0	0	0	0	0	0	0	0	0	0	0	0	0	0	0	0	0	4	0	
Nurses	23	1	2	0	2	0	5	0	0	0	2	0	1	1	12	1	8	0	5	0	1	0	1	0	0	0	0	62	3	
Nurse Aid	0	0	0	0	2	0	0	0	0	0	4	0	0	0	0	0	0	0	8	0	2	0	0	0	0	0	0	16	0	
Midwife	0	0	0	0	0	0	1	0	0	0	1	0	0	0	1	0	1	0	1	0	0	0	0	0	0	0	0	5	0	
Physician Assistants	8	0	1	0	1	0	1	0	0	0	1	0	0	0	0	0	1	0	1	0	0	0	0	0	0	0	0	14	0	
Lab Technician	9	0	1	0	2	0	0	0	1	0	1	0	0	0	0	0	2	0	0	0	10	0	0	0	3	0	0	29	0	
Environmental Health Technicians	5	0	0	0	0	0	0	0	0	0	0	0	0	0	0	0	0	0	0	0	0	0	0	0	0	0	0	5	0	
Dieticians	0	0	7	1	0	0	0	0	0	0	0	0	0	0	0	0	0	0	0	0	0	0	0	0	0	0	0	7	1	
Hospital Cleaner	1	0	0	0	0	0	0	0	0	0	1	0	0	0	1	0	0	0	1	0	2	0	0	0	0	0	0	6	0	
Others*	21	0	0	0	7	0	2	0	2	0	4	0	0	0	4	1	5	0	4	0	1	0	5	0	0	2	0	57	1	
Total:	88	1	12	1	14	0	10	0	3	0	14	0	1	1	19	2	17	0	21	0	16	0	6	0	3	0	2	0	226	5

***Others include the following:**

Radiologist, Microbiologist, Epidemiologist, Dispenser, Licensed Practical Nurse, Psychosocial worker, Hygienist, Logistician, Vaccinator, Ambulance Driver, Procurement Officer, Registrar, Accountant, Secretary, Hospital Administrator, Community Health Volunteer, GIS Specialist, EOC Coordinator, M&E Officer

EPI-Curve of Confirmed Cases and Deaths

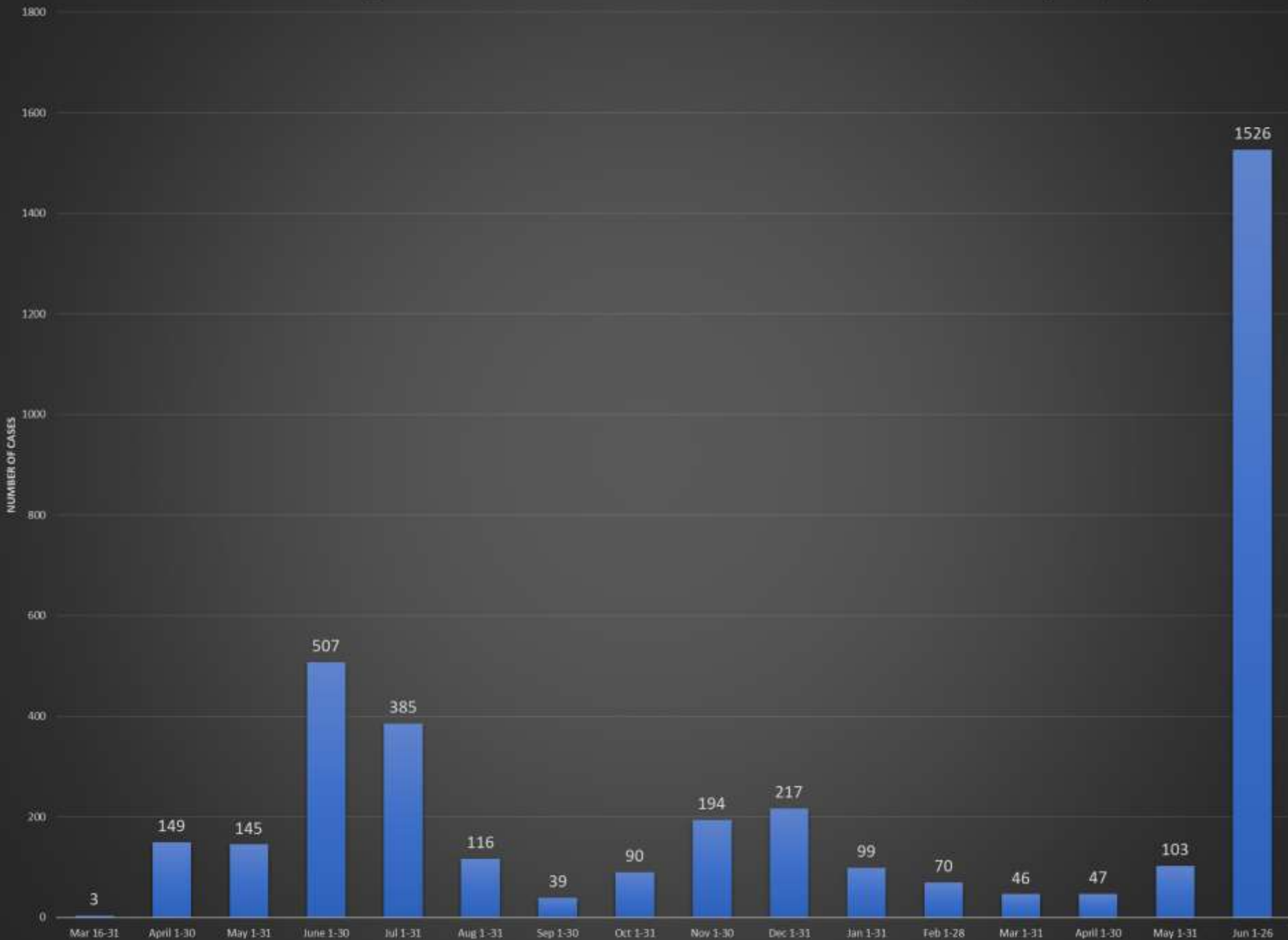
3794



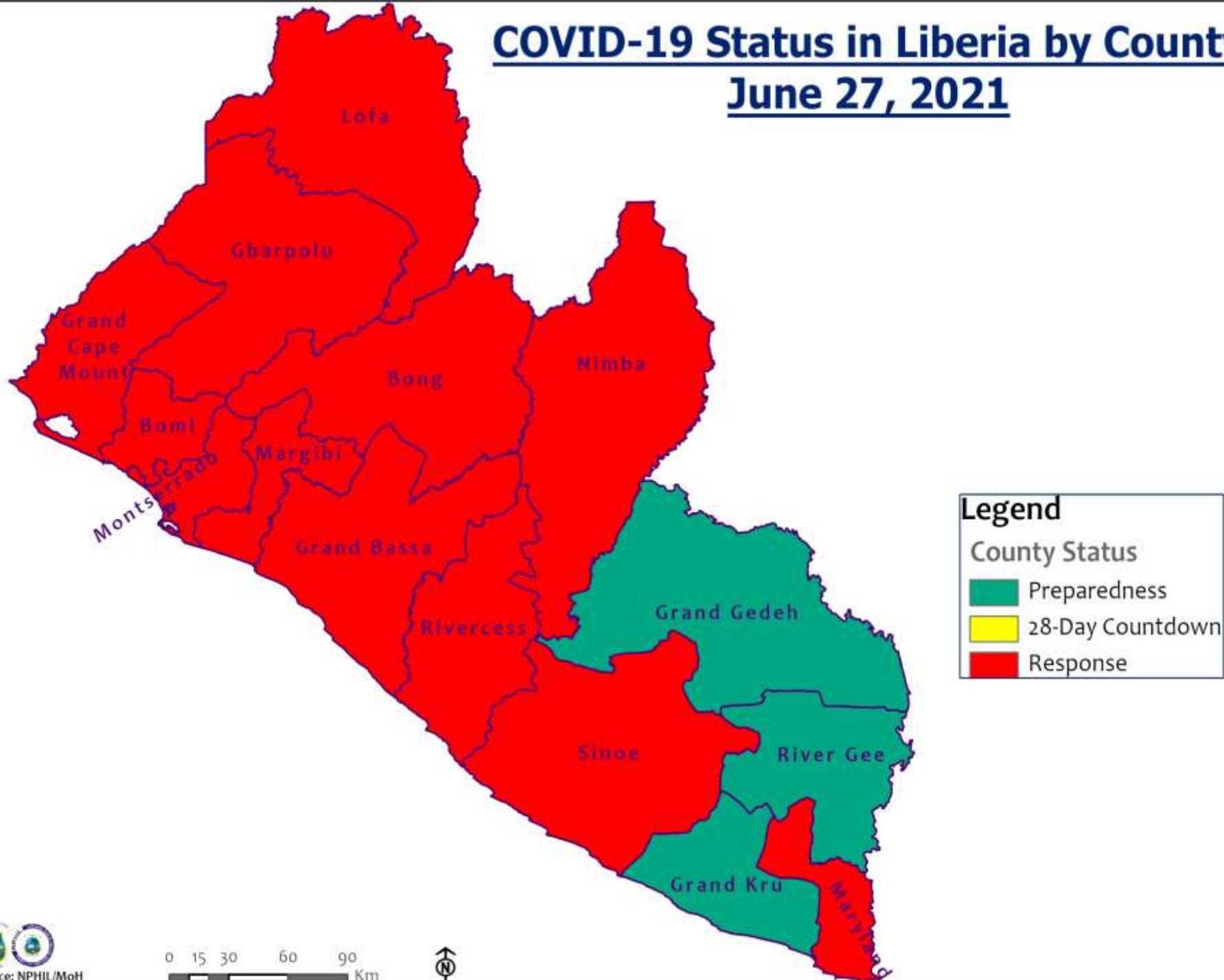
123

0

Full and Partial Monthly Confirmed COVID-19 Cases in Liberia - Mar 16, 2020 - Jun 26, 2021. (n = 3,736)



COVID-19 Status in Liberia by County June 27, 2021



Legend

County Status

- Preparedness
- 28-Day Countdown
- Response



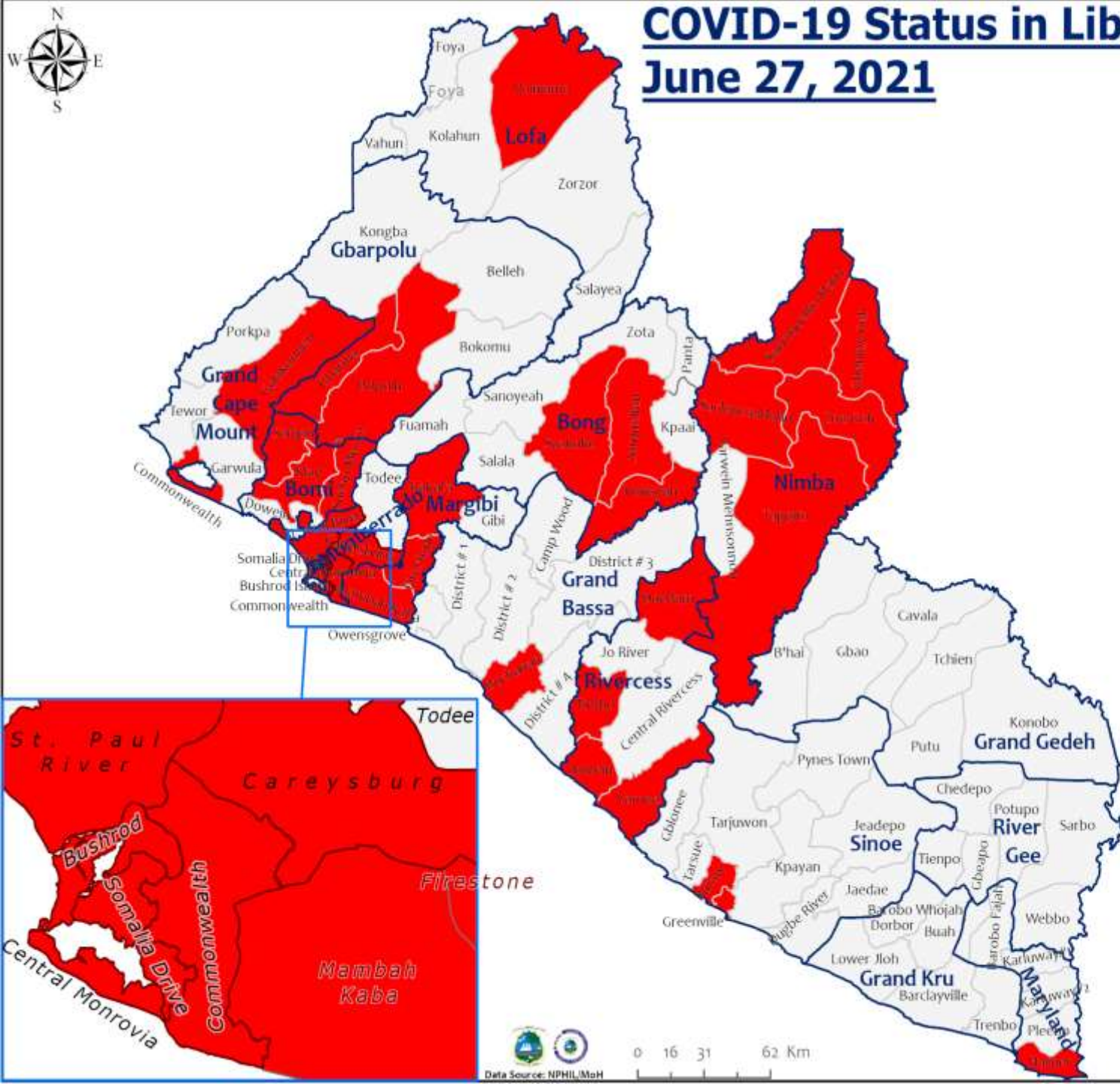
COVID-19 Status in Liberia by District

June 27, 2021



Total Cases: 3,794

Affected Counties	Cumulative Cases
Montserrado	3,095
Margibi	157
Nimba	86
Grand Bassa	81
Bong	81
Lofa	62
Bomi	45
Maryland	37
River Gee	36
Grand Cape	33
Mount	26
Gbarpolu	26
Grand Kru	18
Grand Gedeh	16
Rivercess	13
Sinoe	8

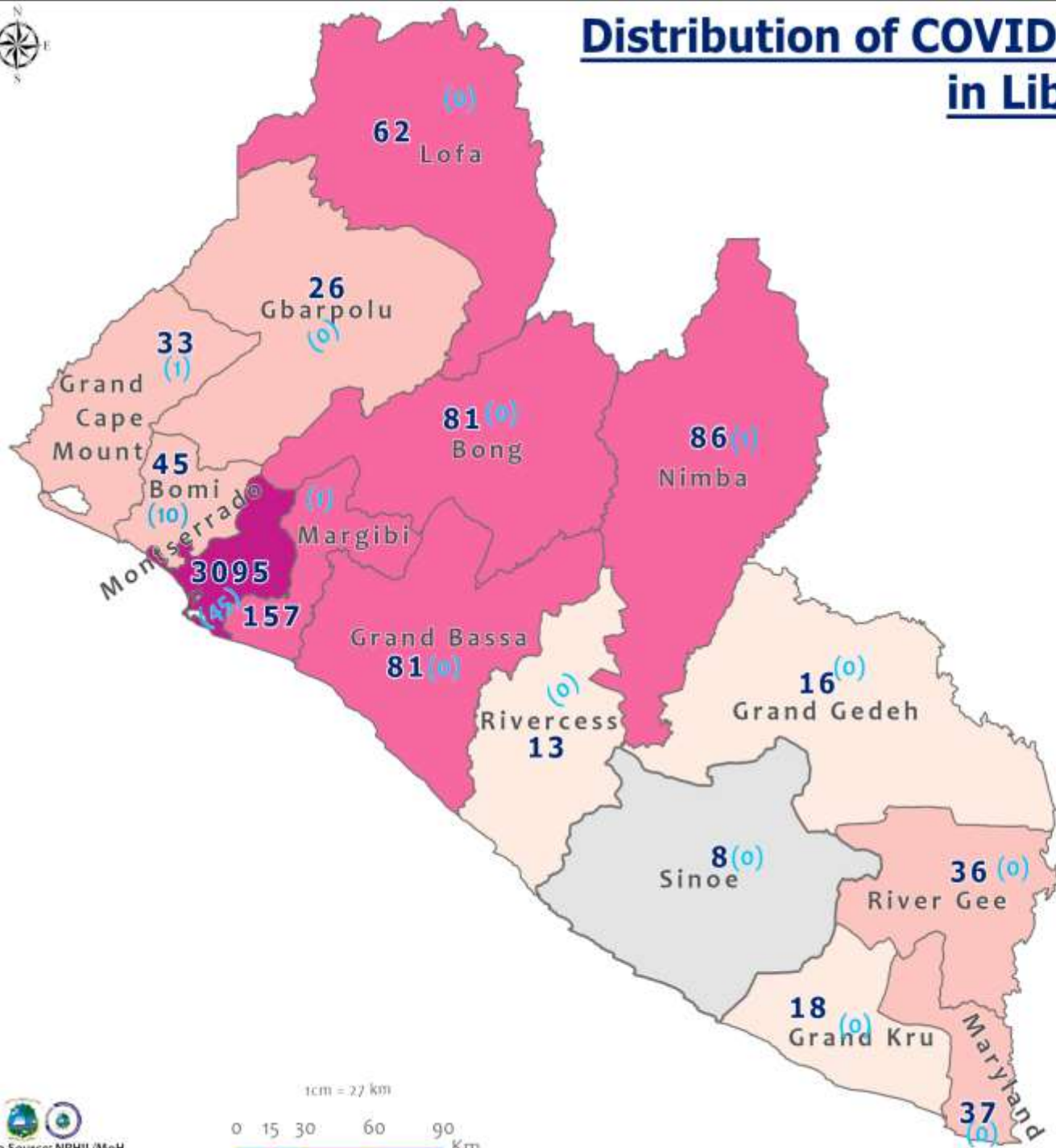


Legend

District Status

- No Active Case
- Has Active Case

Distribution of COVID-19 Cases by County in Liberia - June 27, 2021



Total cumulative cases:

3,794

Total new cases:

58

Legend

Number of Cases

- 0 - 10
- 11 - 20
- 21 - 50
- 51 - 200
- 201 - 3500

Cumulative cases

New cases

0 (0)

1cm = 27 km

0 15 30 60 90 Km

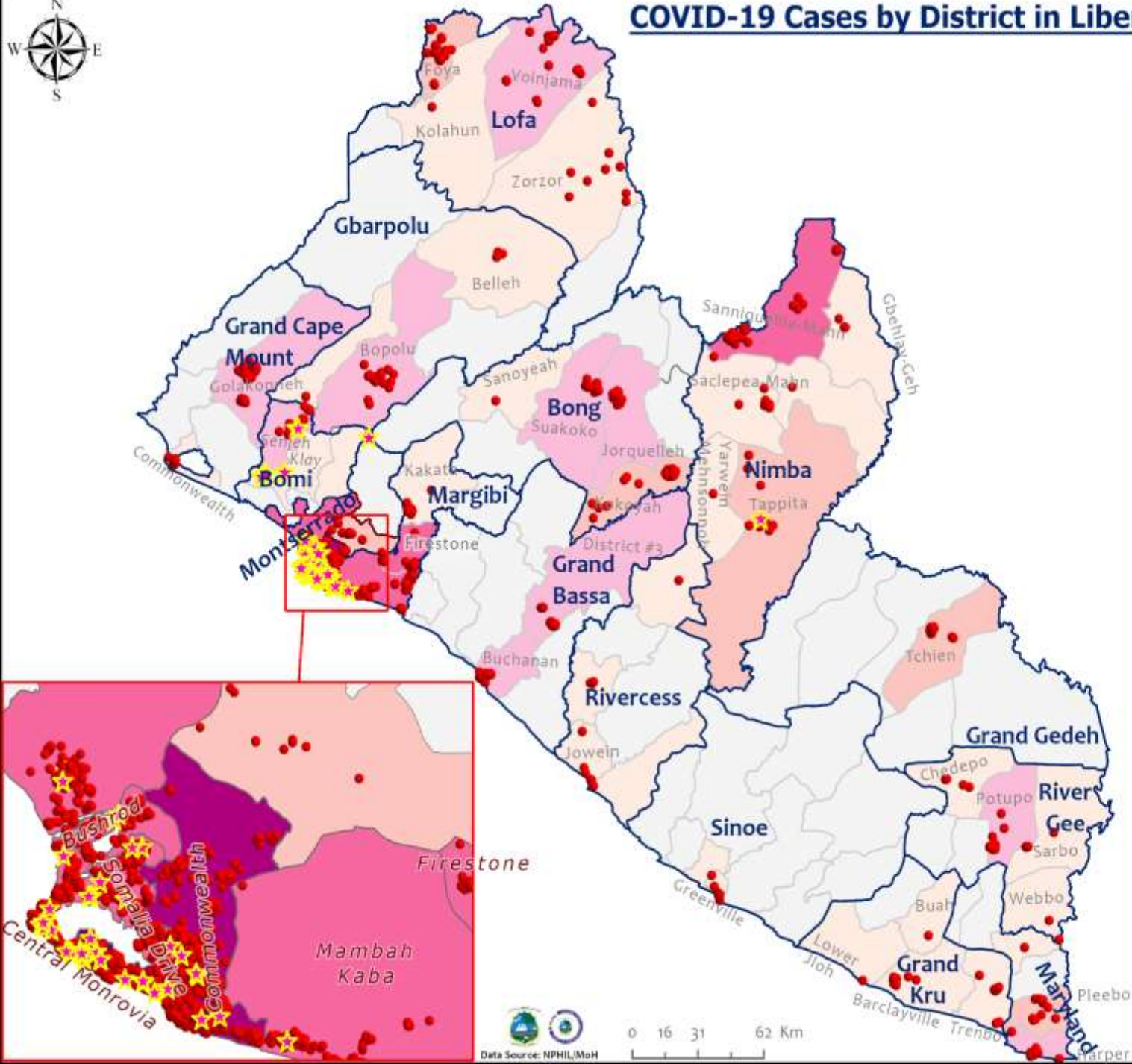


COVID-19 Cases by District in Liberia - June 27, 2021



Total Cases: 3,794

Affected Counties	Cumulative Cases
Montserrado	3,095
Margibi	157
Nimba	86
Grand Bassa	81
Bong	81
Lofa	62
Bomi	45
Maryland	37
River Gee	36
Grand Cape Mount	33
Gbarpolu	26
Grand Kru	18
Grand Gedeh	16
Rivercess	13
Sinoe	8



Legend

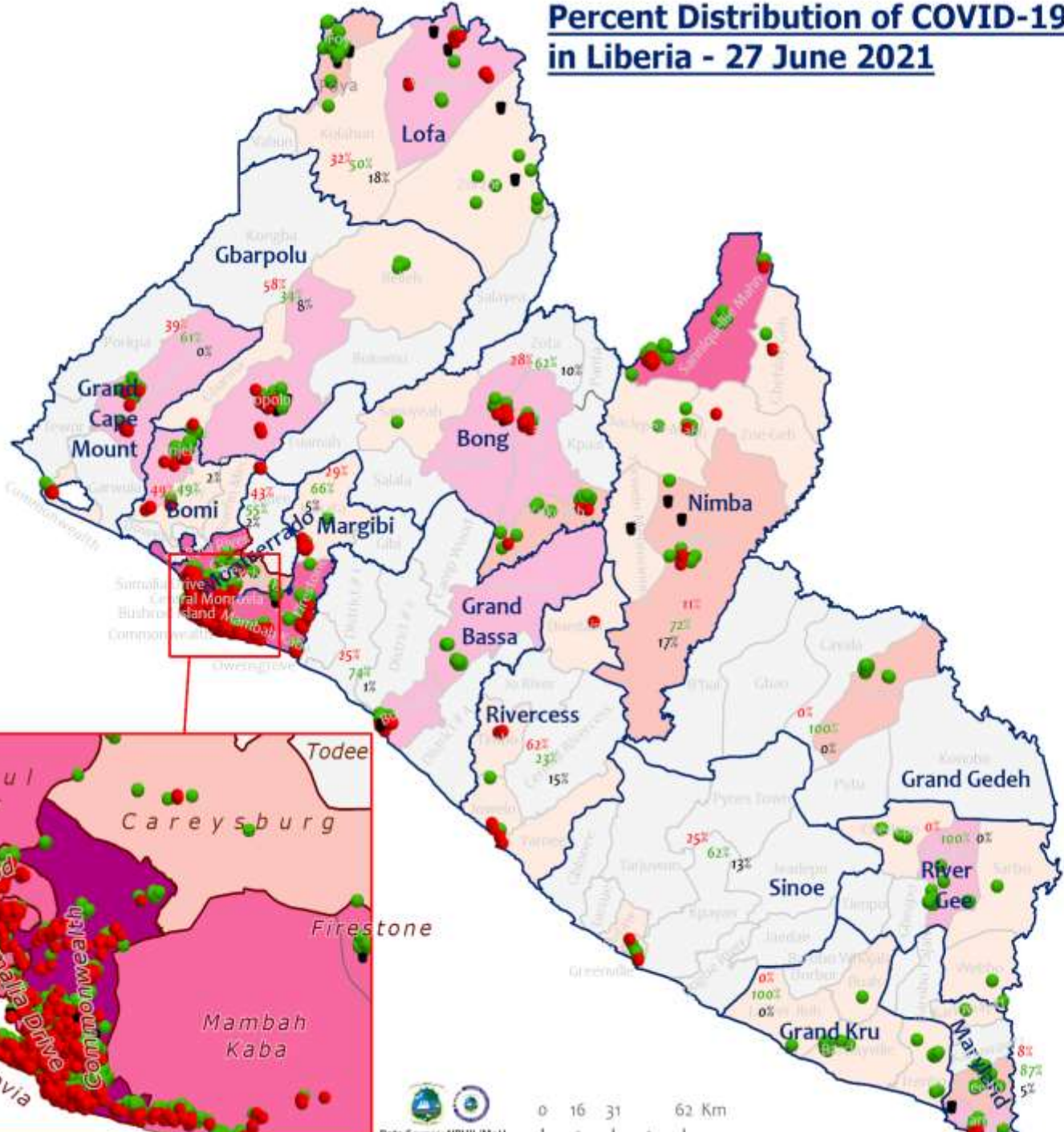
Case Status

- ★ New confirmed case
- Confirmed cases

Cases / District

- 0
- 1-10
- 11-20
- 21-50
- 51-500
- 500-1000
- 1000-1500

Percent Distribution of COVID-19 Cases by Status in Liberia - 27 June 2021



Total Cases: 3,794

Affected Counties	Cumulative Cases
Montserrado	3,095
Margibi	157
Nimba	86
Grand Bassa	81
Bong	81
Lofa	62
Bomi	45
Maryland	37
River Gee	36
Grand Cape Mount	33
Gbarpolu	26
Grand Kru	18
Grand Gedeh	16
Rivercess	13
Sinoe	8

Legend

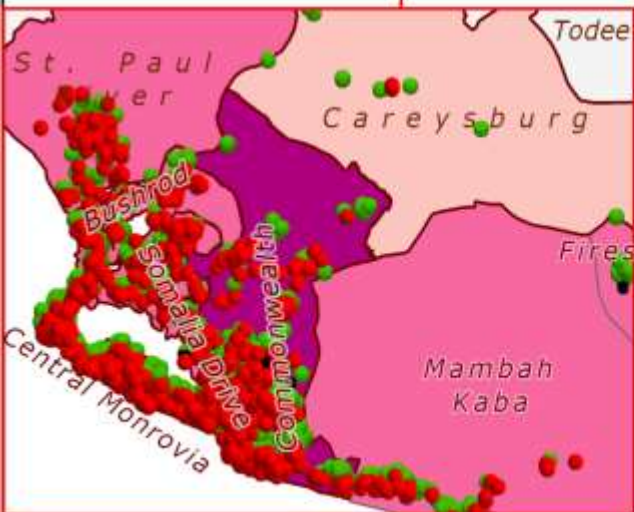
Case Status

- Active
- Recovered
- Dead

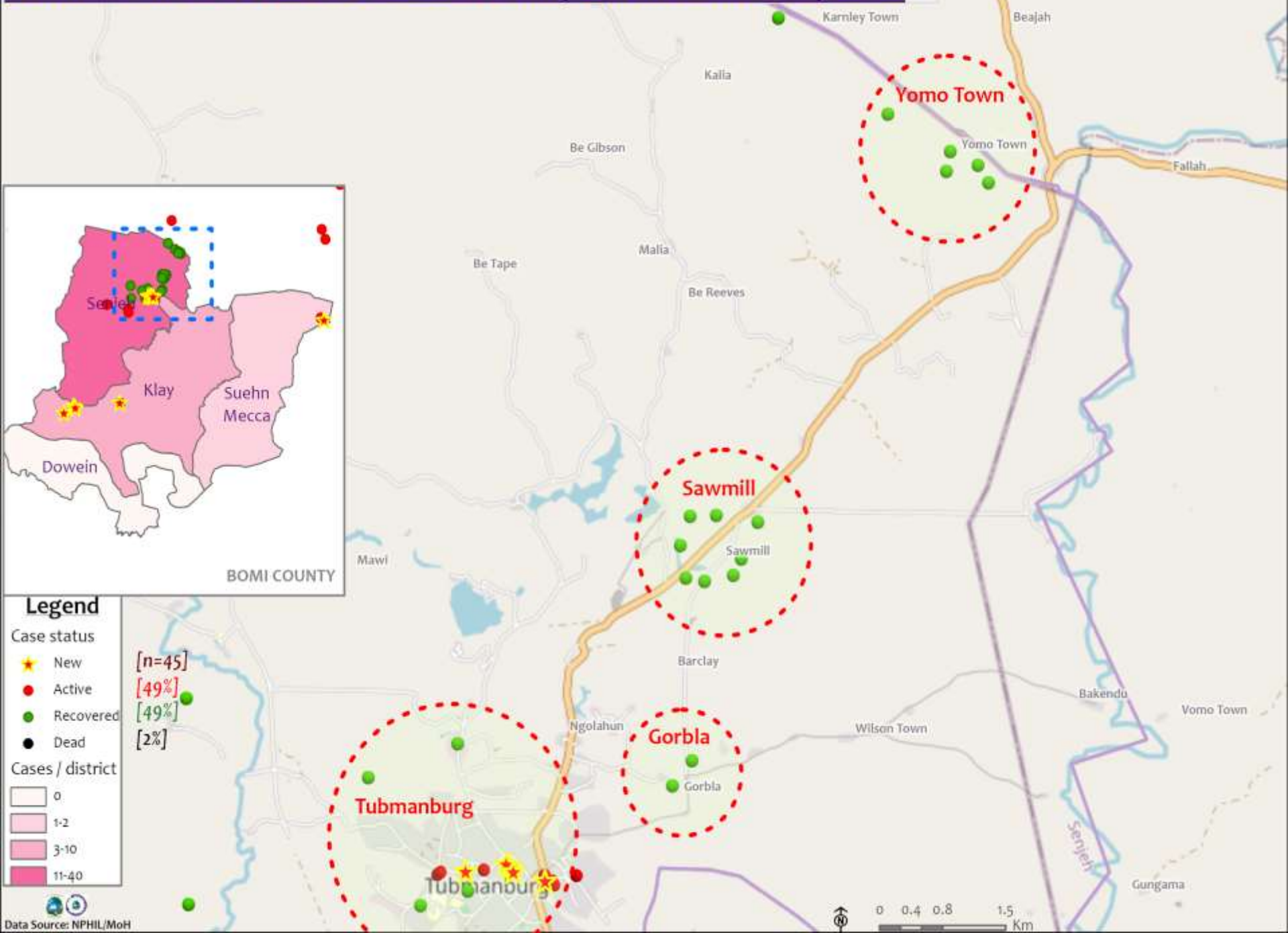
[37]
[60%]
[3%]

Cases / District

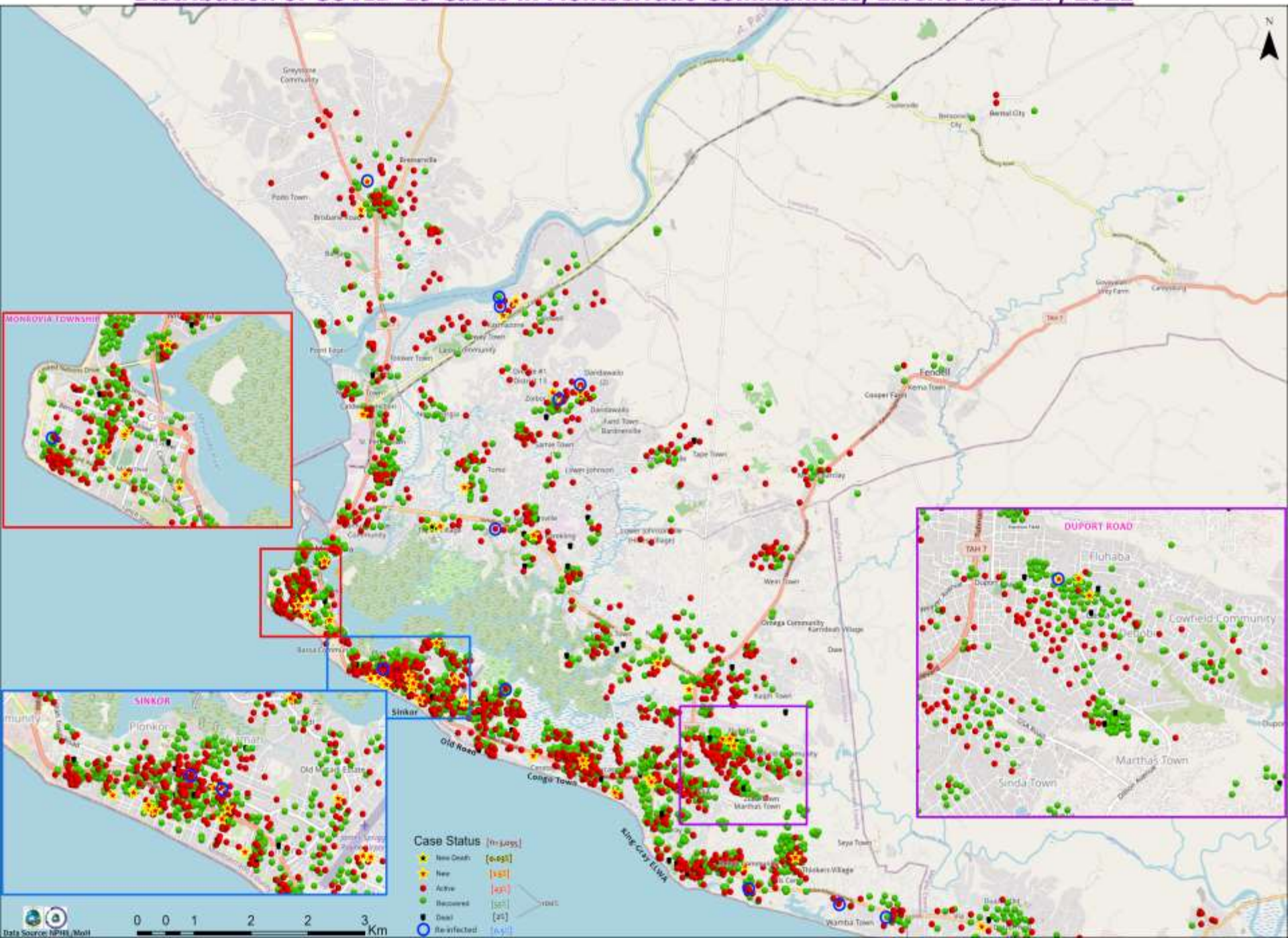
- 0
- 1-10
- 11-20
- 21-50
- 51-500
- 501-1000
- 1001-1500



Distribution of COVID-19 Cases in Bomi, Liberia - June 27, 2021



Distribution of COVID-19 Cases in Montserrat Communities, Liberia June 27, 2021



Home-Base Care of COVID-19 – June 27, 2021

County	New Admissions	Currently in Admissions	No. Followed-up (In-person/Phone)	Cumulative Admissions	New Recoveries	Cumulative Recoveries	Referrals to TU	Cumulative Referrals to TU	New Death	Cumulative Deaths
Montserrat	0	425	75	842	0	398	0	19	0	0
Nimba				0						
Bong				0						
Maryland										
Cape Mount										
Lofa										
Margibi				0						
Total:	0	425	75	842	0	398	0	19	0	0

Laboratory Samples Evaluated – 27 June 2021

County	Sample Evaluated	New Positive	Repeat Positive	Initial Negative	Repeat Test Negative	Pending Lab Result
Bomi	20	10	2	8	0	0
Bong	2	0	1	1	0	0
Grand Bassa	1	0	0	1	0	0
Grand Cape Mount	11	1	3	7	0	0
Margibi	14	1	0	12	0	1
Montserrado	216	45	7	154	0	10
Nimba	1	1	0	0	0	0
Grand Gedeh	2	0	0	2	0	0
TOTAL	267	58	13	185	0	11
Outgoing Traveler						
Outgoing Traveler	218	42	6	159	0	11
Voluntary						
Voluntary	12	4	1	7	0	0
Self Isolation						
Self Isolation	2	0	0	2	0	0
From county						
From county	32	11	5	16	0	0
Post Morten						
Post Morten	3	1	1	1	0	0
NRL						
NRL	265	58	13	183	0	11
US-Embassy Lab						
US-Embassy Lab	2	0	0	2	0	0
PREVAIL-JFK						
PREVAIL-JFK	0	0	0	0	0	0

Incoming Travelers Testing Positive for COVID-19 (June 1-27, 2021)

Country of embarkment	Cases
Ghana	2
Nigeria	2
D. R. Congo	1
Others	1
Total	6

Nationality	Cases
Liberian	3
Nigerian	1
Congolese	1
Others	1
Total	6

Occupation	Cases
Business	2
Others	4
Total	6

Flight	Cases
AWA	3
ASKY	1
Kenya Airways	1
Others	1
Total	6

Incoming Travelers Testing Positive for COVID-19 (May 1 – 27, June 2021)

Country of embarkment	Cases
Ghana	12
UAE	5
USA	5
Nigeria	3
Pakistan	1
Australia	1
Lebanon	1
Canada	1
India	1
Others	12
Total	42

Occupation	Cases
Business	10
Student	5
PFM Consultant	1
Physician	1
Diplomat	1
Nurse Aide	1
Retired	1
Geologist	1
Others	21
Total	42

Nationality	Cases
Liberian	16
American	4
Ghanaian	4
Indian	2
Nigerian	2
Pakistani	1
Lebanese	1
Canadian	1
Australian	1
Others	10
Total	42

Flight	Cases
Kenya Airways	15
ASKY	10
SN Brussels	6
AWA	4
Air France	2
Others	5
Total	42

Incoming Travelers Testing Positive for COVID-19 (Dec 2020 – 27 June 2021)

Country of embarkment	Cases
Ghana	28
USA	24
Nigeria	17
Lebanon	8
Cote D'Ivoire	6
UAE	5
India	4
Pakistan	3
Nepal	1
Others	37
Total	133

Flight	Cases
ASKY	38
Kenya Airways	26
SN Brussels	20
Air France	16
AWA	12
Air Cote D'Ivoire	10
Others	11
Total	133

Nationality	Cases
Liberian	47
American	18
Nigerian	12
Ghanaian	7
Indian	7
Lebanese	6
Canadian	4
Pakistani	3
Nepal	1
Others	28
Total	133

Occupation	Cases
Business	34
Student	16
Health worker	5
Engineer	4
Diplomat	1
Others	73
Total	133

Summary of COVID-19 Contact Tracing in Response Counties

County	New Contacts Line listed	Cumulative Contacts	No. of Health Care Workers as Contacts	Cumulative no. of Health Care Workers as contacts	Contacts became a case	Cumulative contacts that became a case	Contacts Completed 14 Days	Cumulative Contacts Completing 14 Days	Contacts Under Follow-up	Contacts lost to Follow-up
Montserratado	57	7512	0	648	0	211	42	6471	1029	0
Margibi	0	480	0	125	0	42	0	470	278	0
Grand Bassa	0	457	5	145	0	51	0	410	28	0
Sinoe	0	191	0	30	0	1	0	191	0	0
Lofa	0	758	17	103	0	34	0	726	46	0
Nimba	0	613	8	61	0	25	0	550	17	0
Bong	0	302	31	70	0	28	0	300	60	0
Gbarpolu	0	87	1	13	0	8	0	87	42	0
Grand Cape Mount	0	49	0	3	0	4	0	51	14	0
RiverGee	0	123	0	13	0	30	0	123	0	0
Maryland	0	208	0	28	0	19	0	136	7	0
Bomi	0	180	18	35	0	15	0	177	67	0
Rivercess	0	102	1	56	0	0	0	88	10	0
Grand Kru	0	333	0	131	0	17	0	330	0	0
Grand Gedeh	0	163	0	49	0	6	0	125	0	0
National	57	11558	81	1510	0	491	42	10235	1598	0

Thank you for Listening