



Liberia COVID-19 Daily Sitrep 445 (June 3, 2021)

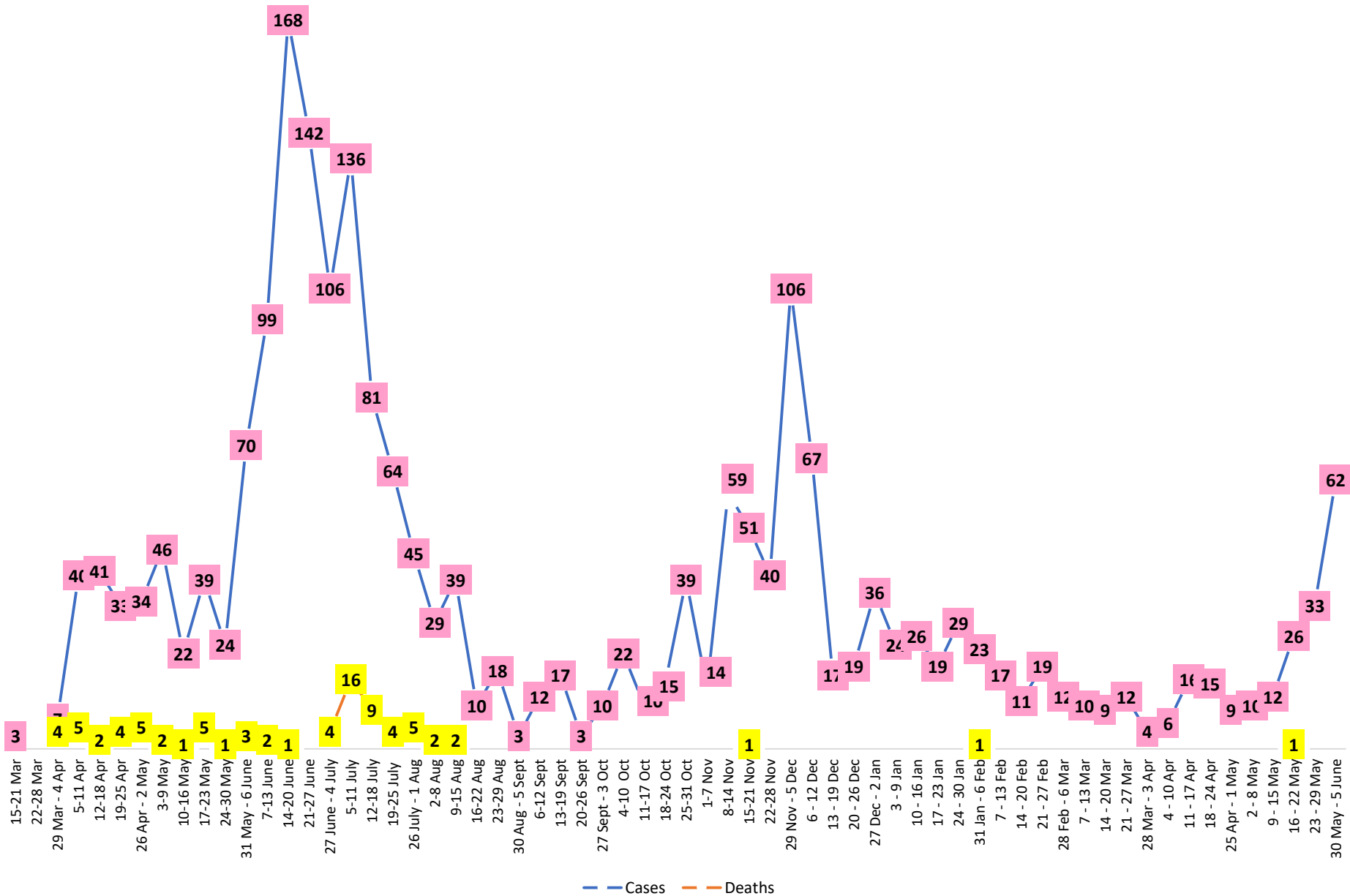
Summary of COVID-19 Cases by Reporting County, Liberia, 16 March 2020 – 3 June 2021

County	Laboratory Confirmed Cases	Confirmed Cases on Contact List	Confirmed Cumulative Cases
Bomi	0	0	23
Bong	0	0	56
Gbarpolu	0	0	11
Grand Bassa	0	0	60
Grand Cape Mount	0	0	20
Grand Kru	0	0	18
Grand Gedeh	0	0	16
Lofa	0	0	45
Margibi	0	0	106
Maryland	0	0	34
Montserrado	23	2	1741
Nimba	0	0	73
Rivercess	0	0	5
River Gee	0	0	36
Sinoe	0	0	6
NATIONAL	23	2	2250

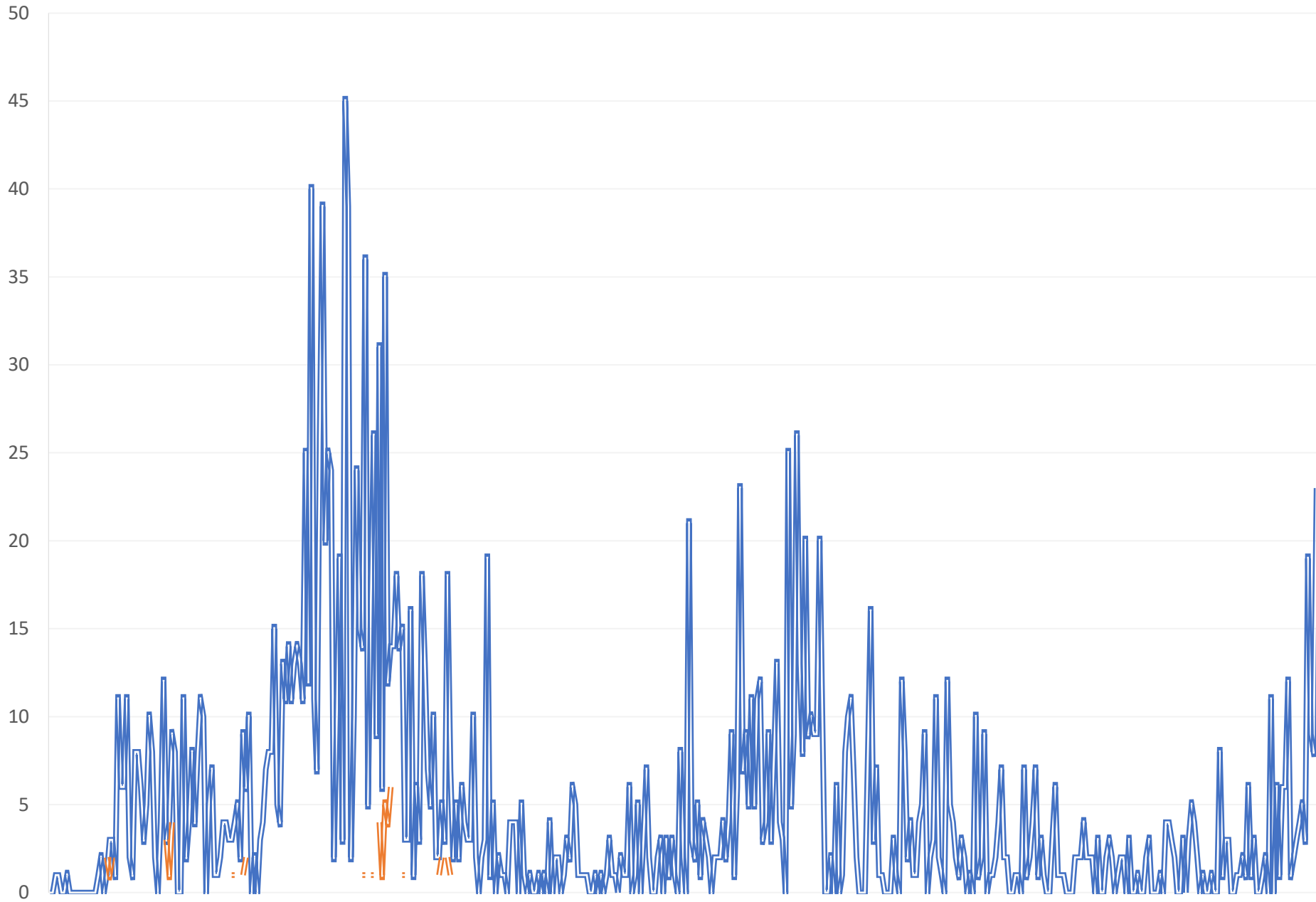
Demographic Breakdown (Gender & Age) of Confirmed COVID-19 Cases (16 March 2020 – 3 June 2021)

County	<15 years		15 - 34		35 - 54		55+		All ages		Total Confirmed
	M	F	M	F	M	F	M	F	M	F	
Bomi	2	2	3	5	7	3	0	1	12	11	23
Bong	3	1	6	6	20	9	8	3	37	19	56
Gbarpolu	1	2	0	2	4	1	1	0	6	5	11
Grand Bassa	11	2	9	11	13	8	4	2	37	23	60
Grand Cape Mount	0	0	11	0	8	0	1	0	20	0	20
Grand Kru	0	0	2	5	4	5	2	0	8	10	18
Grand Gedeh	0	1	1	2	7	3	2	0	10	6	16
Lofa	3	3	8	3	13	5	8	2	32	13	45
Margibi	6	4	15	13	28	12	18	10	67	39	106
Maryland	2	0	10	6	9	4	1	2	22	12	34
Montserrado	53	55	401	233	505	216	189	89	1148	593	1741
Nimba	1	4	15	10	28	6	5	4	49	24	73
Rivercess	0	0	2	3	0	0	0	0	2	3	5
River Gee	0	0	4	3	19	5	5	0	28	8	36
Sinoe	0	0	1	0	4	1	0	0	5	1	6
National	82	74	488	302	669	278	244	113	1483	767	2250

COVID-19 WEEKLY EPI-CURVE



— Daily Cases — Daily Deaths



The International News Headlines are Alarming!

Covid Updates: Africa Faces Third Wave as Vaccine Rollout Sputter
“The New York Times”

Alarm in Africa: Virus surges, vaccines grind to 'near halt'
“CTV News”

Africa needs at least 20 million Covid vaccine doses in the next six weeks,
WHO says
“CNBC”

Africans to get 5 million COVID vaccine doses from US
“Africa Times”

Summary of COVID-19 Deaths by Reporting County, Liberia, 16 March 2020 – 3 June 2021

County	ew Suspected Deaths	COVID-19 Treatment Unit	Total in COVID-19 Treatment Unit	Health Facility	Total in Health Facility	Community	Total in Community	Confirmed Deaths on Contact List	Cumulative Deaths
Bomi	0	0	0	0	1	0	0	0	1
Bong	0	0	0	0	4	0	1	0	5
Gbarpolu	0	0	0	0	2	0	0	0	2
Grand Bassa	0	0	0	0	0	0	0	0	0
Grand Cape Mount	0	0	0	0	0	0	0	0	0
Grand Gedeh	0	0	0	0	0	0	0	0	0
Grand Kru	0	0	0	0	0	0	0	0	0
Lofa	0	0	0	0	6	0	5	0	11
Maryland	0	0	0	0	2	0	0	0	2
Margibi	0	0	2	0	4	0	0	0	6
Montserrado	0	0	9	1	20	0	16	0	46
Nimba	0	0	2	0	5	0	4	0	11
Rivercess	0	0	0	0	1	0	1	0	2
River Gee	0	0	0	0	0	0	0	0	0
Sinoe	0	0	0	0	1	0	0	0	1
National	0	0	13	1	46	0	27	0	86

Daily and Cumulative Healthcare Worker (HCW) COVID-19 Cases and Deaths by County, Liberia, 16 March 2020 – 3 June 2021

County	DAILY REPORT						CUMULATIVE CASES (ALIVE & DEAD)	
	New Suspected & High Risk Cases (Alive)			New Suspect Death	Laboratory Confirmed Cases	Confirmed Cases on Contact List	Confirmed	Deaths
	Suspect	High Risk	Total					
Bomi	0	0	0	0	0	0	5	0
Bong	0	0	0	0	0	0	19	3
Gbarpolu	0	0	0	0	0	0	1	0
Grand Bassa	0	0	0	0	0	0	21	0
Grand Gedeh	0	0	0	0	0	0	2	0
Grand Kru	0	0	0	0	0	0	14	0
Lofa	0	0	0	0	0	0	16	0
Margibi	0	0	0	0	0	0	12	1
Maryland	0	0	0	0	0	0	16	0
Montserrado	0	0	0	0	0	0	88	1
Nimba	0	0	0	0	0	0	14	0
Rivercess	0	0	0	0	0	0	3	0
River Gee	0	0	0	0	0	0	10	0
Sinoe	0	0	0	0	0	0	3	0
NATIONAL	0	0	0	0	0	0	224	5

Cadre Cases and Deaths by Health Care Workers (16 March 2020 – 3 June 2021)

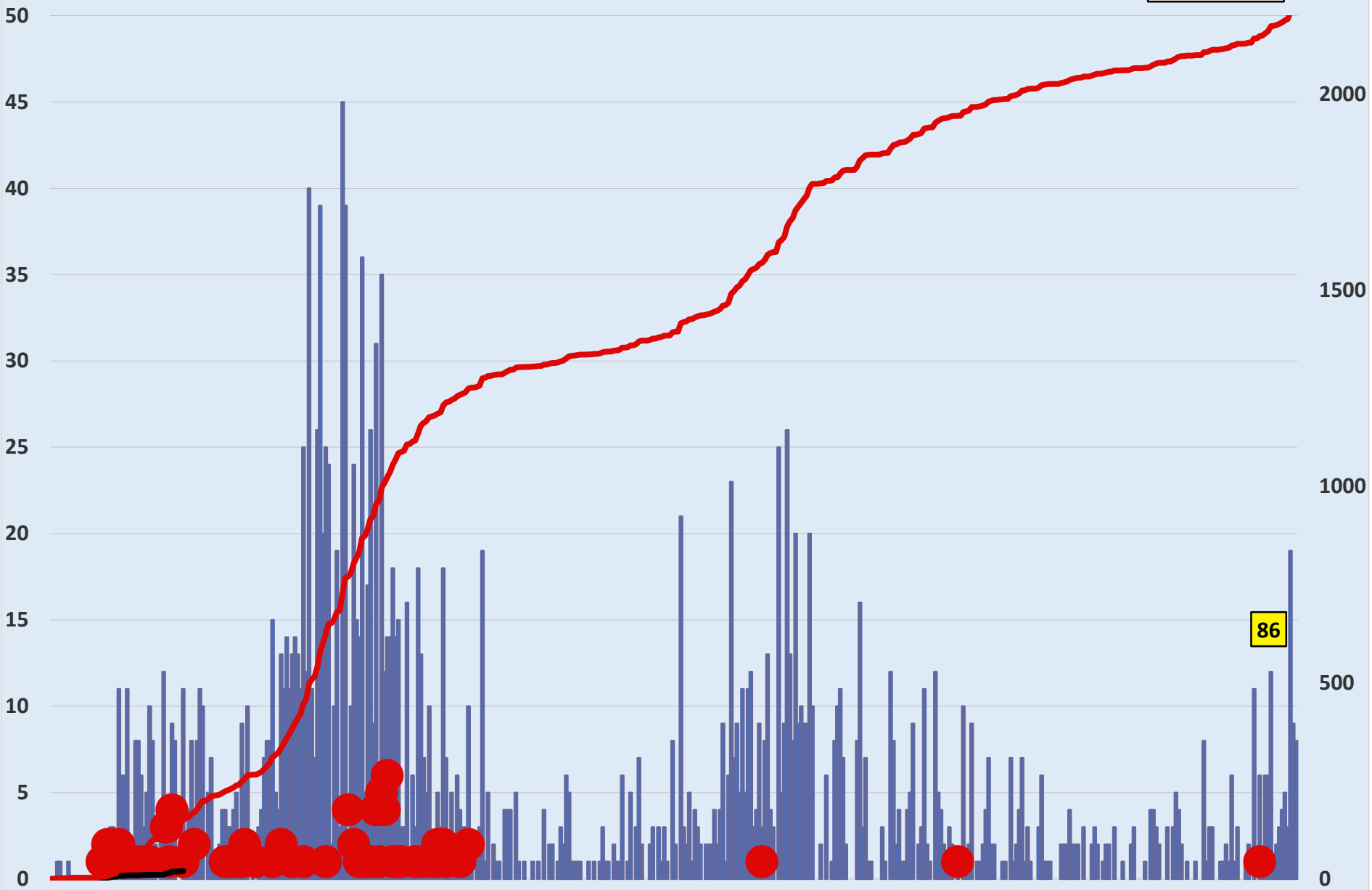
Health Care Worker Cadre	Montserratado		Margibi		Nimba		River Gee		Sinoe		Grand Kru		Gbarpolu		Bong		Lofa		Grand Bassa		Maryland		Bomi		Rivercess		Grand Gedeh		National (Total)	
	Cases	Deaths	Cases	Deaths	Cases	Deaths	Cases	Deaths	Cases	Deaths	Cases	Deaths	Cases	Deaths	Cases	Deaths	Cases	Deaths	Cases	Deaths	Cases	Deaths	Cases	Deaths	Cases	Deaths	Cases	Deaths	Cases	Deaths
Doctors	17	0	1	0	0	0	1	0	0	0	0	0	0	0	1	0	0	0	1	0	0	0	0	0	0	0	0	21	0	
Pharmacists	4	0	0	0	0	0	0	0	0	0	0	0	0	0	0	0	0	0	0	0	0	0	0	0	0	0	4	0		
Nurses	23	1	2	0	2	0	5	0	0	0	2	0	1	1	12	1	8	0	5	0	1	0	1	0	0	0	62	3		
Nurse Aid	0	0	0	0	2	0	0	0	0	0	4	0	0	0	0	0	0	8	0	2	0	0	0	0	0	0	16	0		
Midwife	0	0	0	0	0	0	1	0	0	0	1	0	0	0	1	0	1	0	1	0	0	0	0	0	0	0	5	0		
Physician Assistants	8	0	1	0	1	0	1	0	0	0	1	0	0	0	0	0	1	0	1	0	0	0	0	0	0	0	14	0		
Lab Technician	9	0	1	0	2	0	0	0	1	0	1	0	0	0	0	0	2	0	0	0	10	0	0	0	3	0	29	0		
Environmental Health Technicians	5	0	0	0	0	0	0	0	0	0	0	0	0	0	0	0	0	0	0	0	0	0	0	0	0	0	5	0		
Dieticians	0	0	7	1	0	0	0	0	0	0	0	0	0	0	0	0	0	0	0	0	0	0	0	0	0	0	7	1		
Hospital Cleaner	1	0	0	0	0	0	0	0	0	0	1	0	0	0	1	0	0	0	1	0	2	0	0	0	0	0	6	0		
Others*	21	0	0	0	7	0	2	0	2	0	4	0	0	0	4	1	4	0	4	0	1	0	4	0	0	2	0	55	1	
Total:	88	1	12	1	14	0	10	0	3	0	14	0	1	1	19	2	16	0	21	0	16	0	5	0	3	0	2	0	224	5

***Others include the following:**

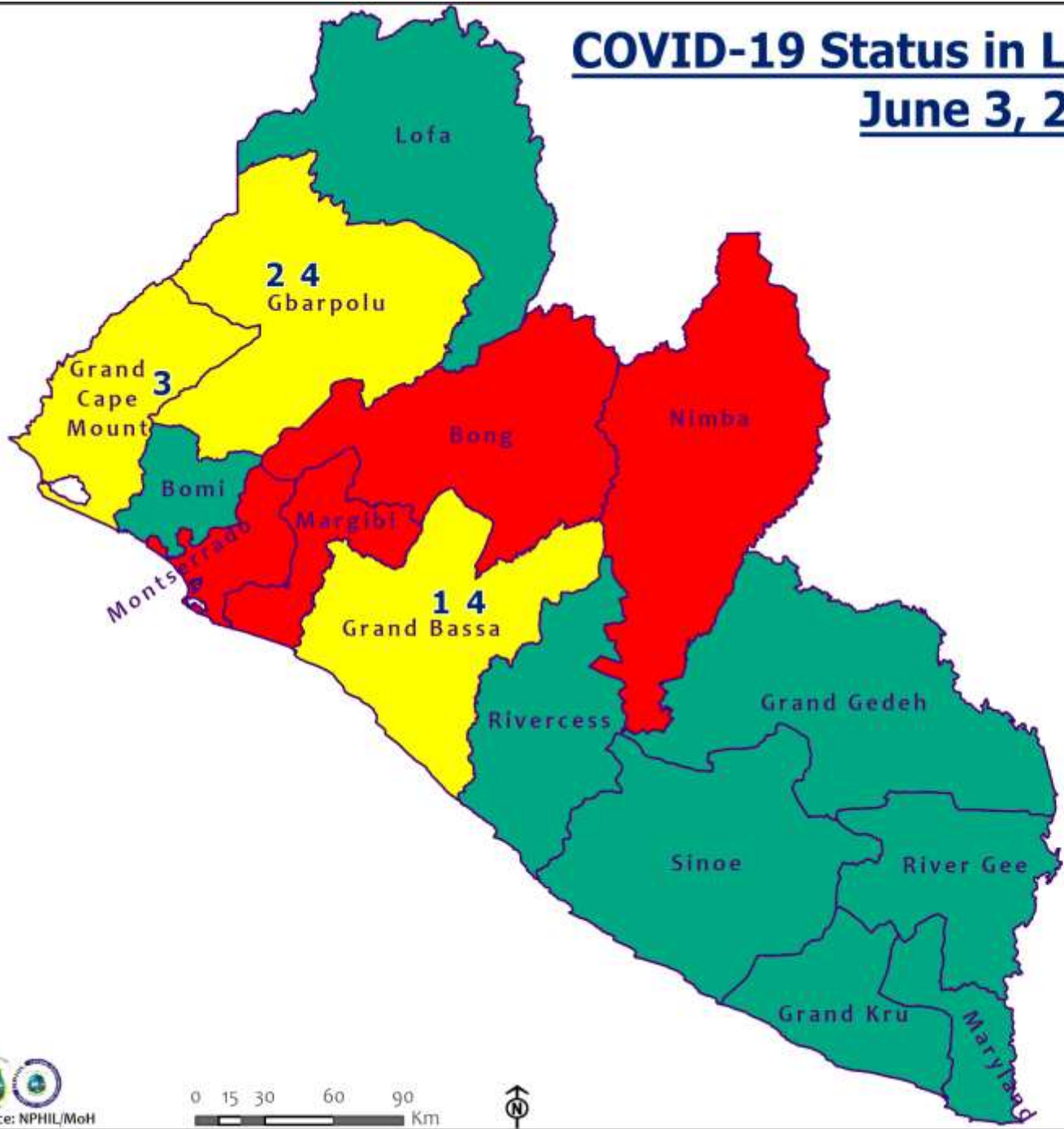
Radiologist, Microbiologist, Epidemiologist, Dispenser, Licensed Practical Nurse, Psychosocial worker, Hygienist, Logistician, Vaccinator, Ambulance Driver, Procurement Officer, Registrar, Accountant, Secretary, Hospital Administrator, Community Health Volunteer, GIS Specialist, EOC Coordinator

EPI-Curve of Confirmed Cases and Deaths

2250



COVID-19 Status in Liberia by County June 3, 2021



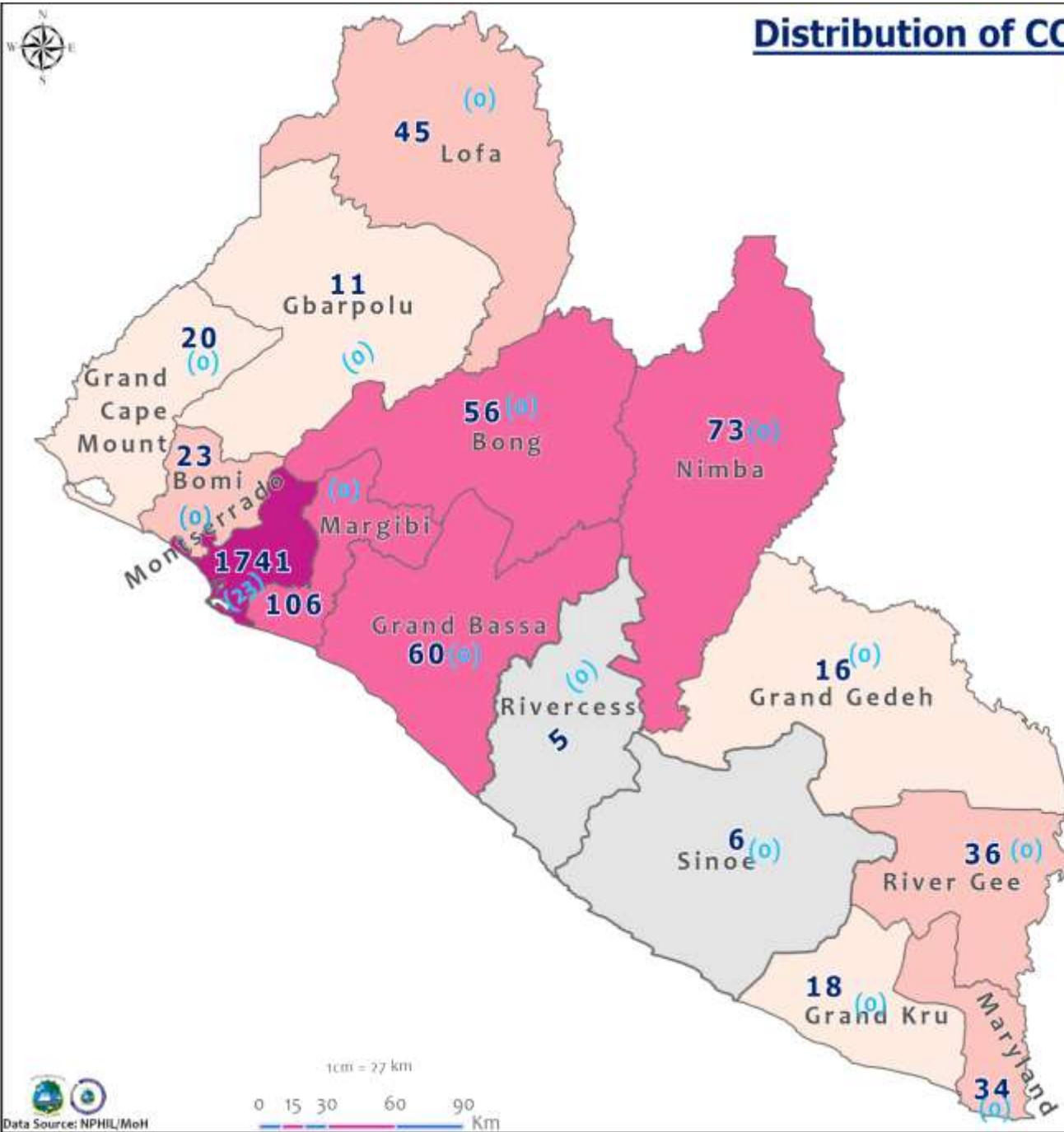
Legend

County Status

- Preparedness
- 28-Day Countdown
- Response



Distribution of COVID-19 Cases by County in Liberia - June 3, 2021



Total cumulative cases:

2250

Total new cases:

23

Legend

Number of Cases

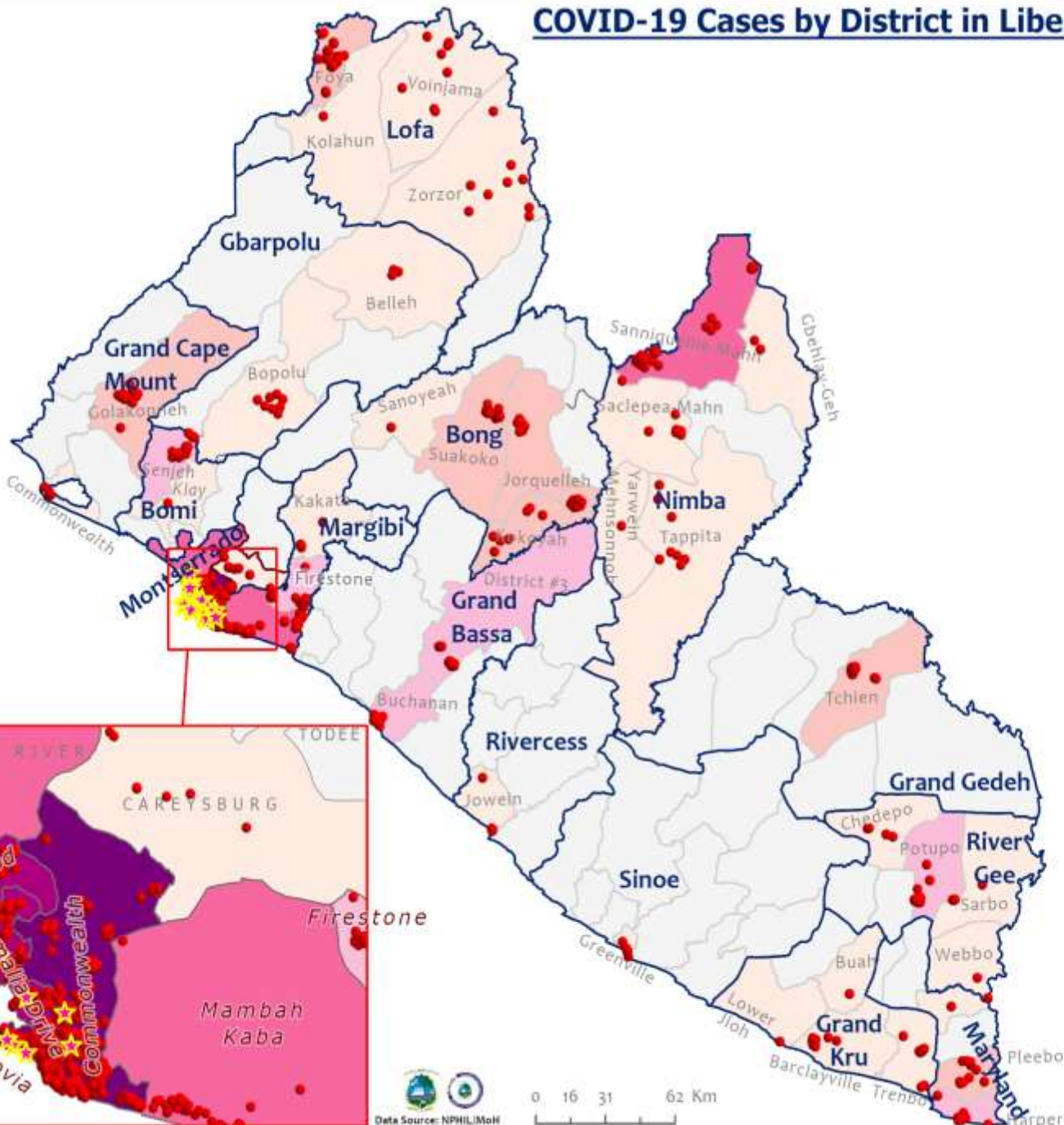
- 0 - 10
- 11 - 20
- 21 - 50
- 51 - 200
- 201 - 2000

Cumulative cases

New cases

0 (0)

COVID-19 Cases by District in Liberia - June 3, 2021



Total Cases: 2250

Affected Counties	Cumulative Cases
Montserrado	1741
Margibi	106
Nimba	73
Grand Bassa	60
Bong	56
Lofa	45
River Gee	36
Maryland	34
Bomi	23
Grand Cape Mount	20
Grand Kru	18
Grand Gedeh	16
Gbarpolu	11
Sinoe	6
Rivercess	5

Legend

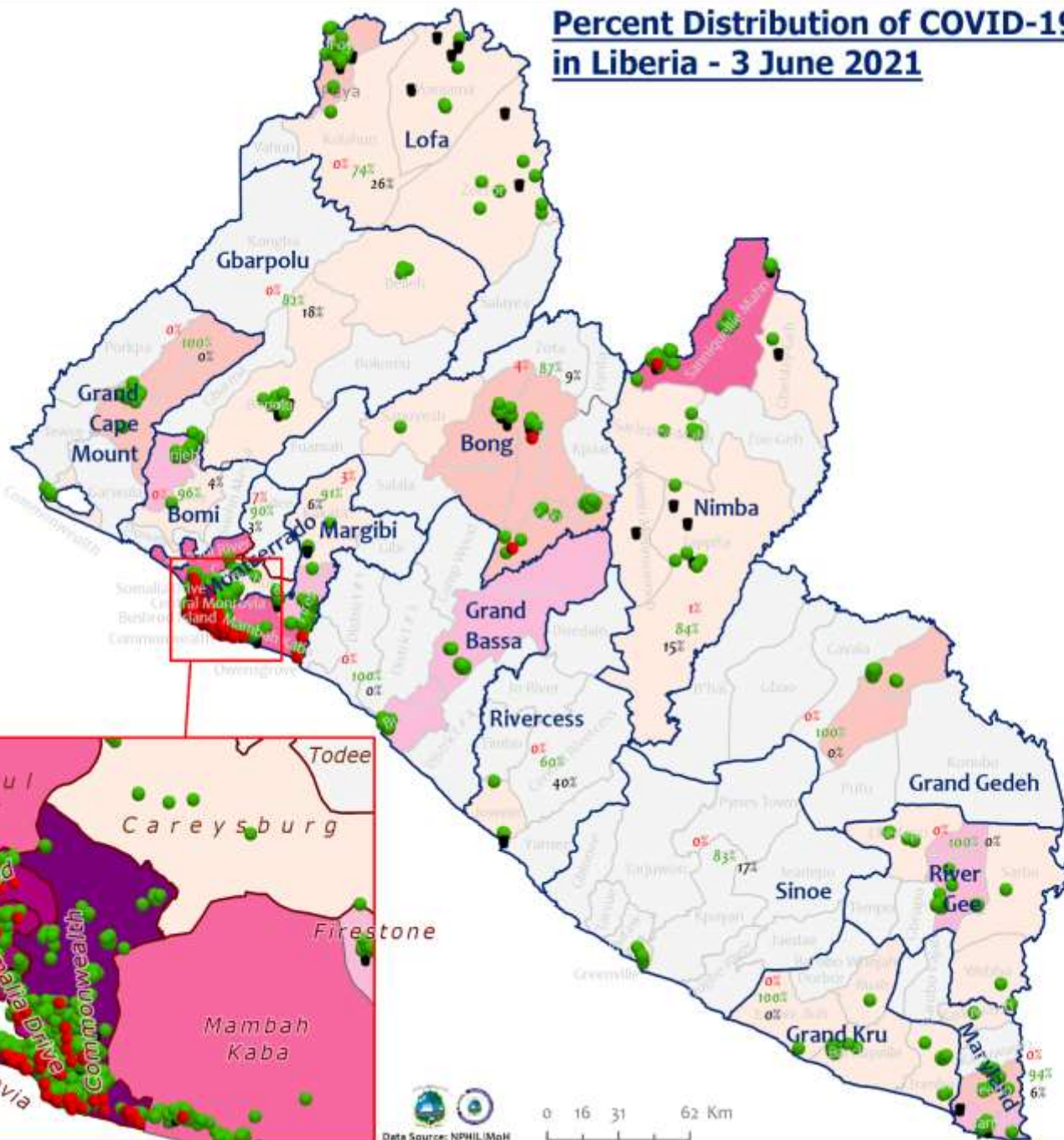
Case Status

- ★ New confirmed case
- Confirmed cases

Cases / District

- 0
- 1-10
- 11-20
- 21-50
- 51-100
- 101-200
- 201-600

Percent Distribution of COVID-19 Cases by Status in Liberia - 3 June 2021



Total Cases: 2250

Affected Counties	Cumulative Cases
Montserrado	1741
Margibi	106
Ninba	73
Grand Bassa	60
Bong	56
Lofa	45
River Gee	36
Maryland	34
Bomi	23
Grand Cape Mount	20
Grand Kru	18
Grand Gedeh	16
Gbarpolu	11
Sinoe	6
Rivercess	5

Legend

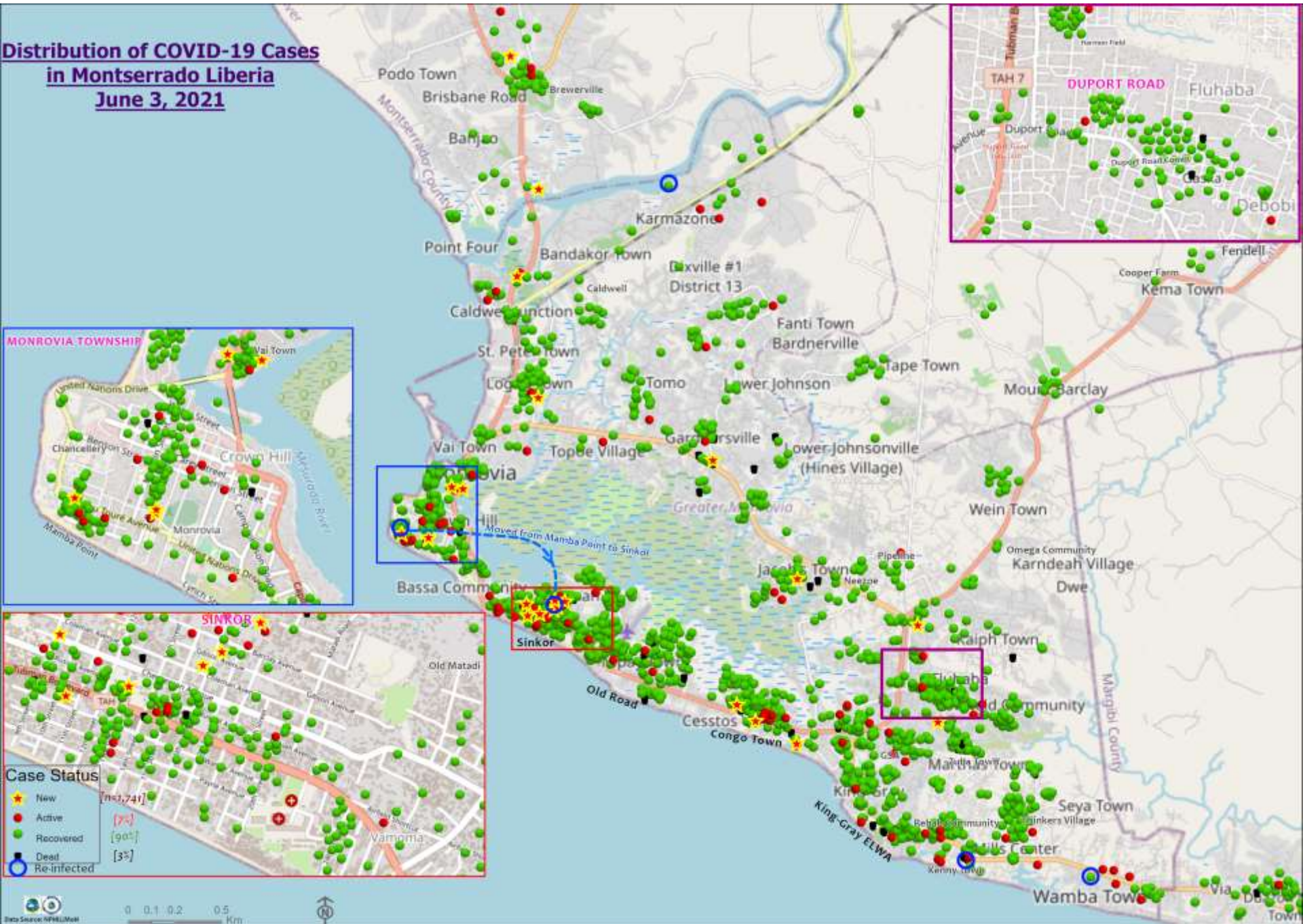
Case Status

- Active [5%]
- Recovered [91%]
- Dead [4%]

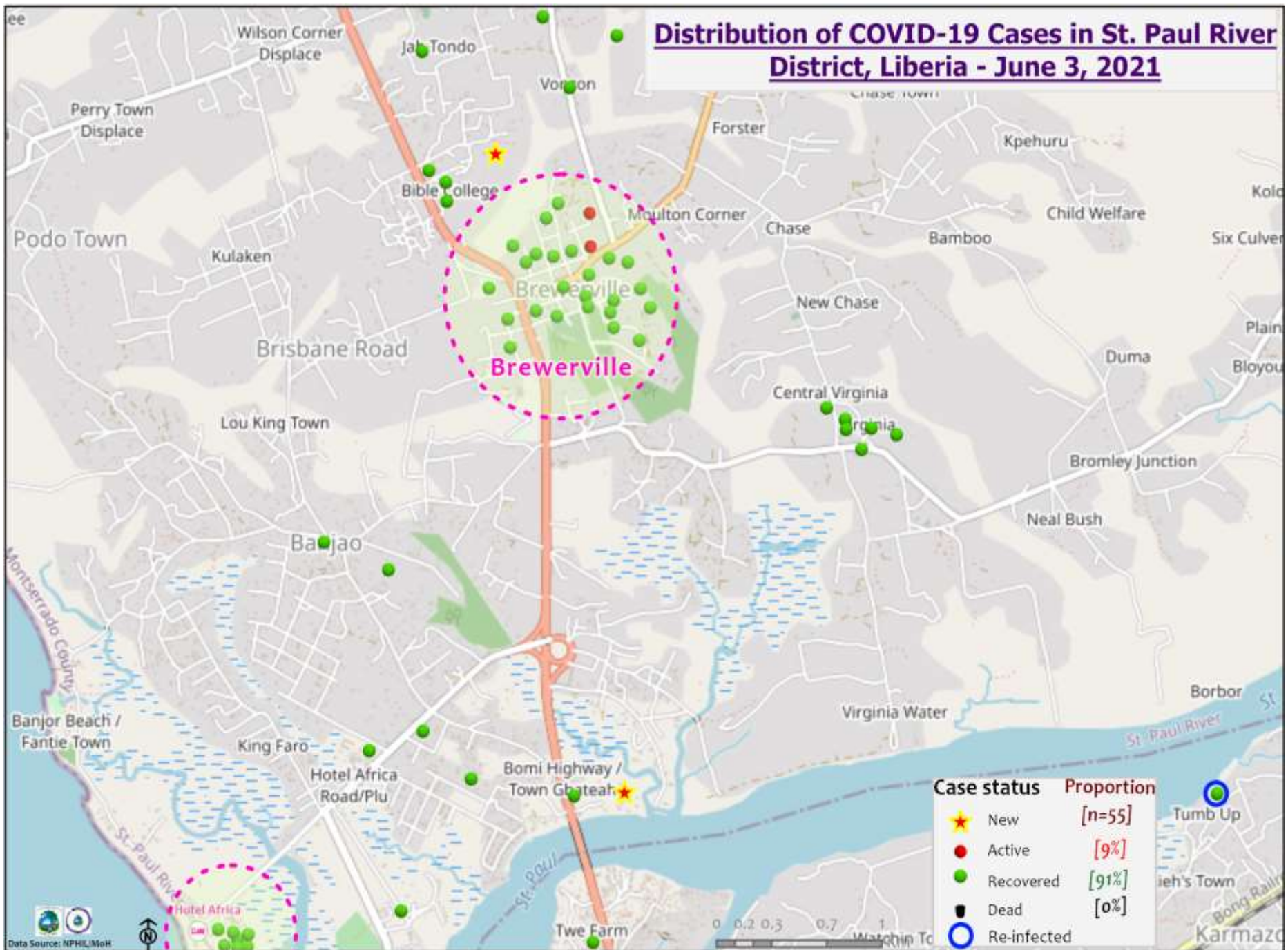
Cases / District

- 0
- 1-10
- 11-20
- 21-50
- 51-100
- 101-200
- 201-600

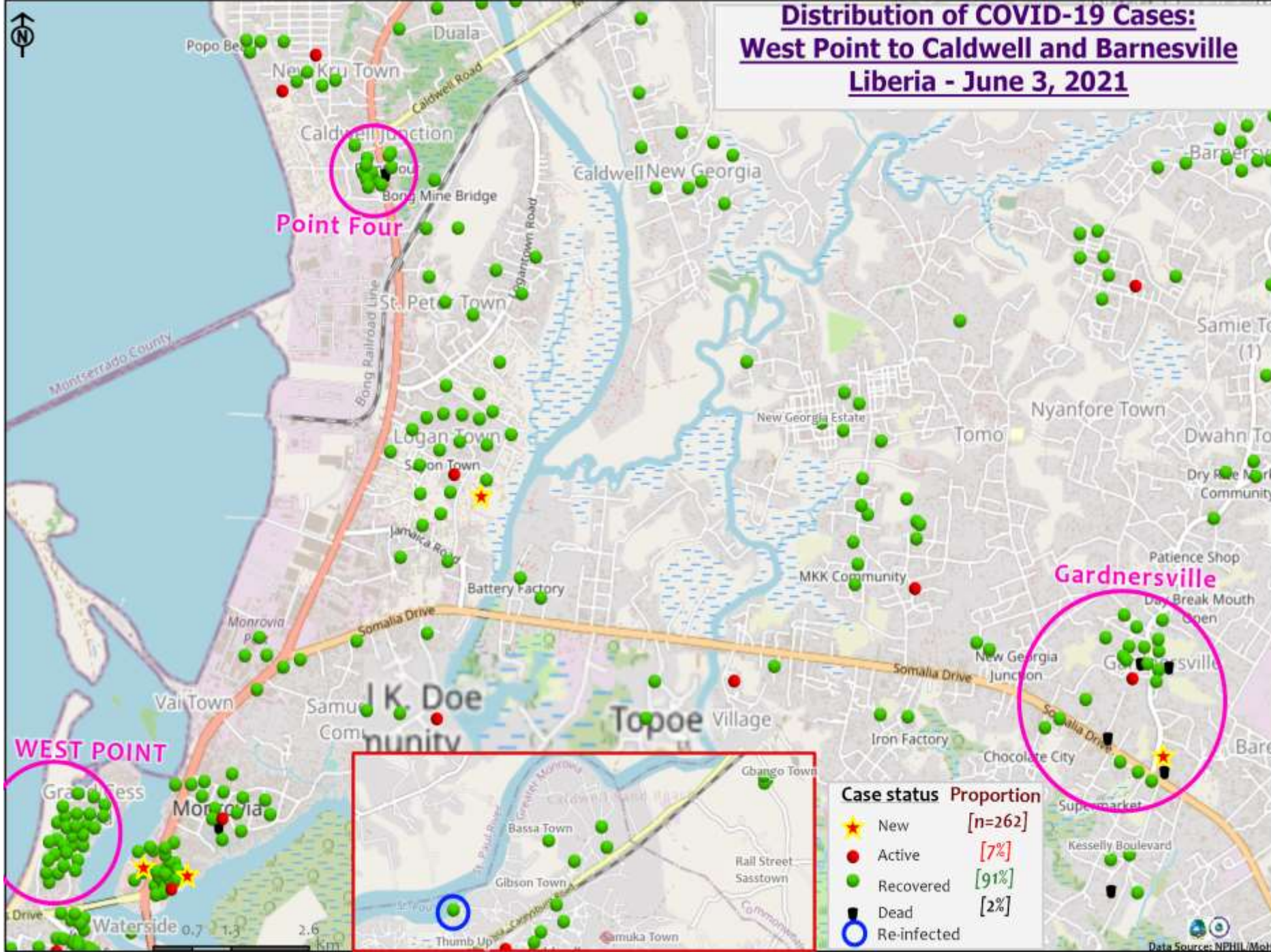
Distribution of COVID-19 Cases in Montserratado Liberia June 3, 2021



Distribution of COVID-19 Cases in St. Paul River District, Liberia - June 3, 2021



Distribution of COVID-19 Cases: West Point to Caldwell and Barnesville Liberia - June 3, 2021



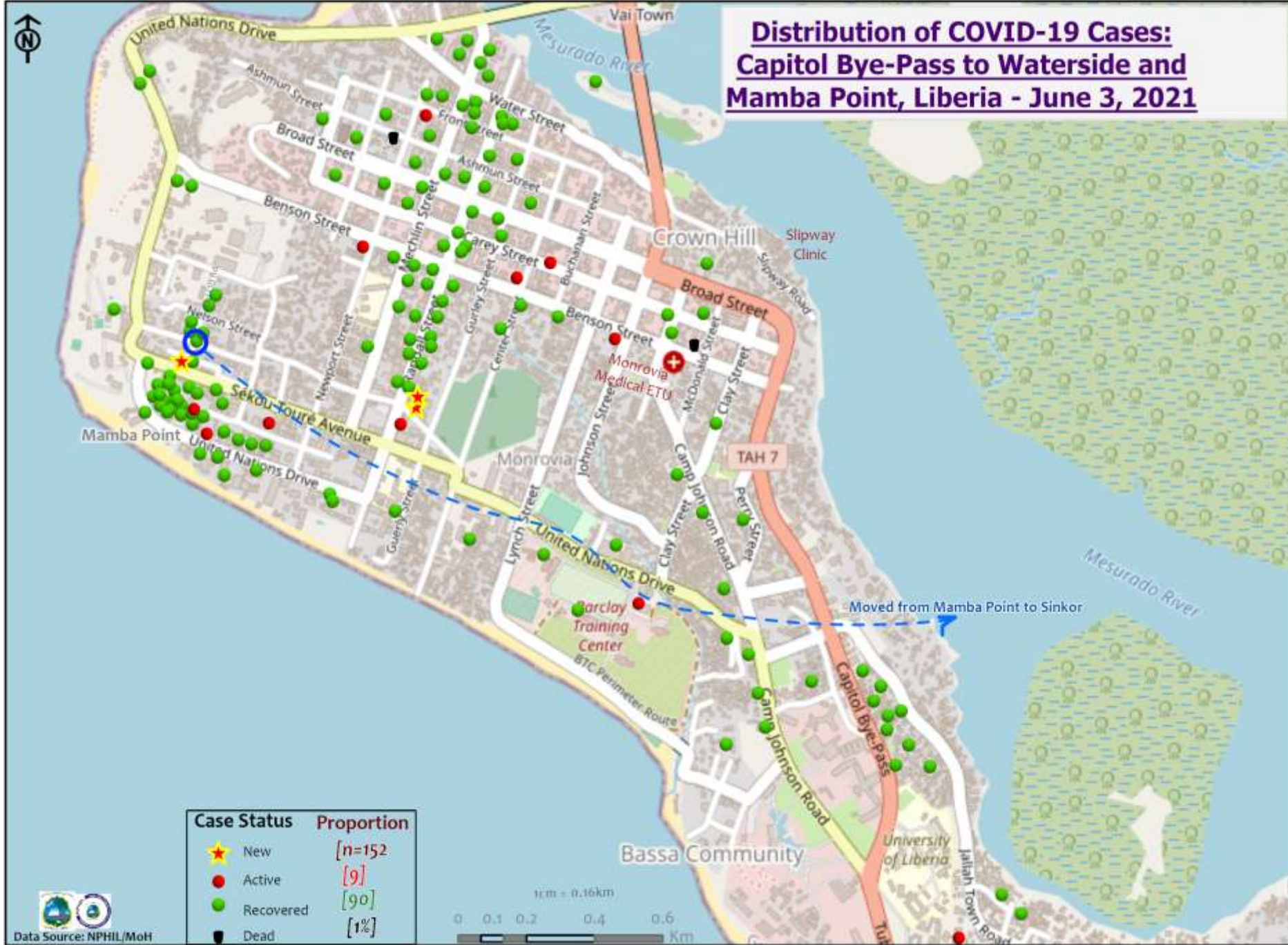
Point Four

WEST POINT

Gardnersville

Case status	Proportion
★ New	[n=262]
● Active	[7%]
● Recovered	[91%]
■ Dead	[2%]
○ Re-infected	

Distribution of COVID-19 Cases: Capitol Bye-Pass to Waterside and Mamba Point, Liberia - June 3, 2021



Case Status	Proportion
★ New	[n=152]
● Active	[9]
● Recovered	[90]
● Dead	[1%]

Distribution of COVID-19 Cases: Capitol Bye-Pass to Sinkor, Liberia - June 3, 2021



Case Status	Proportion
★ New	[n=371]
● Active	[9%]
● Recovered	[89%]
■ Dead	[2%]

COVID-19 Clusters: Congo Town to Jacob's Town, King-Gray/ELWA/Duport Road to Thinker's Village/VOA, Liberia - June 3, 2021



Case status	Proportion
★ New	[n=852]
● Active	[6%]
● Recovered	[91%]
■ Dead	[3%]
○ Re-infected	

Summary of confirmed, recovered, active, and dead cases by reporting counties, Liberia, 16 March 2020 – 3 June 2021

County	Confirmed Cases		Recovered Cases		Active Cases	Dead Cases	
	New	Cum	New	Cum		New	Cum
Bomi	0	23	0	22	0	0	1
Bong	0	56	0	49	2	0	5
Gbarpolu	0	11	0	9	0	0	2
Grand Bassa	0	60	0	60	0	0	0
Grand Cape Mount	0	20	0	20	0	0	0
Grand Gedeh	0	16	0	16	0	0	0
Grand Kru	0	18	0	18	0	0	0
Lofa	0	45	0	34	0	0	11
Margibi	0	106	0	97	3	0	6
Maryland	0	34	0	32	0	0	2
Montserrado	23	1741	5	1587	109	0	45
Nimba	0	73	0	61	1	0	11
Rivercess	0	5	0	3	0	0	2
River Gee	0	36	0	36	0	0	0
Sinoe	0	6	0	5	0	0	1
National	23	2250	5	2049	115	0	86

Daily Summary Report at Treatment Units – 3 June 2021

Treatment Facility Name	New Admissions	Cumulative Admission	Daily Discharges	Cumulative Recoveries	Daily Deaths	Cumulative Deaths	Currently in treatment
Bomi LGH Treatment Unit	0	18	0	18	0	0	0
Bong Treatment Unit	0	26	0	26	0	0	0
Chief Jallahlone Hospital Treatment Unit	0	1	0	1	0	0	0
Grand Bassa Arcelor Mittal Treatment Unit	0	6	0	6	0	0	0
Grand Bassa LGH Treatment Unit	0	3	0	3	0	0	0
LAC Treatment Unit	0	42	0	42	0	0	0
Starbase Treatment Unit	0	648	0	639	0	9	3
Union Treatment Center	0	78	0	78	0	0	0
Duside Hospital Treatment Unit	0	42	0	40	0	2	0
Martha Tubman Hospital Treatment Unit	0	13	0	13	0	0	0
Rally Time Treatment Unit	0	4	0	4	0	0	0
Sasstown Treatment Unit	0	7	0	7	0	0	0
Behwan Treatment Unit	0	7	0	7	0	0	0
FJ Grante Hospital Treatment Unit	0	5	0	5	0	0	0
JJ Dossen Hospital Treatment Unit	0	9	0	9	0	0	0
Pleebo Health Center Treatment Unit	0	21	0	21	0	0	0
Tellewoyan Memorial Hospital Treatment Unit	0	13	0	13	0	0	0
Foya Borma Hospital Treatment Unit	0	12	0	12	0	0	0
Zorzor Treatment Unit	0	6	0	6	0	0	0
Robert Sport Treatment Unit	0	1	0	1	0	0	0
Ganta United Methodist Hospital Treatment Unit	0	1	0	1	0	0	0
Arcelor Mittal Yekepa Treatment Unit	0	12	0	12	0	0	0
Jackson F. Doe Treatment Unit	0	5	0	4	0	1	0
St. Frances Hospital Treatment Unit	0	2	0	2	0	0	0
Fish Town Hospital Treatment Unit	0	36	0	36	0	0	0
E&J Medical Center Treatment Unit	0	20	0	19	0	1	0
TOTAL	0	1038	0	1025	0	13	3

3 suspected cases awaiting PCR test results

Home-Base Care of COVID-19 Cases

County	New Admissions	Currently in Admissions	No. Followed-up (In-person/Phone)	Cumulative Admissions	New Recoveries	Cumulative Recoveries	Referrals to TU	Cumulative Referrals to TU	New Death	Cumulative Deaths
Montserrat	2	26	26	285	5	251	0	8	0	0
Nimba				0						
Margibi				0						
Bong				0						
Total:	2	26	26	285	5	251	0	8	0	0

Laboratory Samples Evaluated – 3 June 2021

County	Sample Evaluated	New Positive	Repeat Positive	Initial Negative	Repeat Test Negative	Pending Lab Result
Bomi	1	0	0	1	0	0
Bong	3	0	0	3	0	0
Grand Bassa	2	0	0	2	0	0
Grand Cape Mount	4	0	0	4	0	0
Margibi	25	0	0	25	0	0
Montserrado	315	23	0	292	0	0
TOTAL	350	23	0	292	0	0
Outgoing Traveler						
Outgoing Traveler	53	17	0	36	0	0
Incoming Traveler						
Incoming Traveler	274	0	0	274	0	0
Voluntary						
Voluntary	5	3	0	2	0	0
Suspected						
Suspected	1	1	0	0	0	0
Contact						
Contact	17	2	0	15	0	0
NRL						
NRL	329	20	0	309	0	0
UN Clinic Lab						
UN Clinic Lab	21	3	0	18	0	0

Incoming Travelers Testing Positive for COVID-19 (May 1 - 3 June 2021)

Country of embarkment	Cases
Ghana	10
UAE	5
USA	5
Australia	1
Pakistan	1
Nigeria	1
Lebanon	1
Canada	1
India	1
Others	9
Total	35

Occupation	Cases
Business	8
Student	5
PFM Consultant	1
Physician	1
Diplomat	1
Nurse Aide	1
Retired	1
Geologist	1
Others	16
Total	35

Nationality	Cases
Liberian	13
American	4
Ghanaian	4
Indian	2
Pakistani	1
Nigerian	1
Lebanese	1
Canadian	1
Australian	1
Others	7
Total	35

Flight	Cases
Kenya Airways	14
ASKY	9
SN Brussels	6
Air France	2
AWA	1
Others	3
Total	35

National Covid-19 Vaccination Report

Less than 60 years (Not Older adults)					60 years and above (Older adults)					Total
At least one health condition			No Existing health condition		At least one health condition		No Existing health condition			
	Male	Female	Male	Female	Male	Female	Male	Female		
Health Care workers	649	608	5645	4467	132	76	304	242	12123	
Others	2163	1625	21286	13655	869	787	2146	1516	44047	
Total Cov-1	2812	2233	26931	18122	1001	863	2450	1758	56170	
Health Care workers	0	0	2	4	3	0	1	0	10	
Others	0	2	48	48	1	2	4	1	106	
Total Cov-2	0	2	50	52	4	2	5	1	116	
Total Vaccinated	2812	2235	26981	18174	1005	865	2455	1759	56286	

Summary of COVID-19 Contact Tracing in Response Counties

County	New Contacts Line listed	Cumulative Contacts	No. of Health Care Workers as Contacts	Cumulative no. of Health Care Workers as contacts	Contacts became a case	Cumulative contacts that became a case	Contacts Completed 14 Days	Cumulative Contacts Completing 14 Days	Contacts Under Follow-up	Contacts lost to Follow-up
Montserrado	38	6291	0	512	0	189	10	5507	113	3
Margibi	0	480	0	125	0	42	0	470	6	0
Grand Bassa	0	457	0	140	0	51	0	410	0	0
Sinoe	0	191	0	30	0	1	0	191	0	0
Lofa	0	758	0	103	0	34	0	726	0	0
Nimba	0	613	0	53	0	25	0	550	0	0
Bong	0	302	0	70	0	28	0	300	0	0
Gbarpolu	0	87	0	13	0	8	0	87	0	0
Grand Cape Mount	0	49	0	3	0	4	0	51	0	0
RiverGee	0	123	0	13	0	30	0	123	0	0
Maryland	0	208	0	28	0	19	0	136	0	0
Bomi	0	180	0	17	0	15	0	177	0	0
Rivercess	0	102	0	55	0	0	0	88	0	0
Grand Kru	0	333	0	131	0	17	0	330	0	0
Grand Gedeh	0	163	0	49	0	6	0	125	0	0
National	38	10337	0	1342	0	469	10	9271	119	3

Thank you for Listening