



# **Liberia COVID-19 Daily Sitrep 444 (June 2, 2021)**

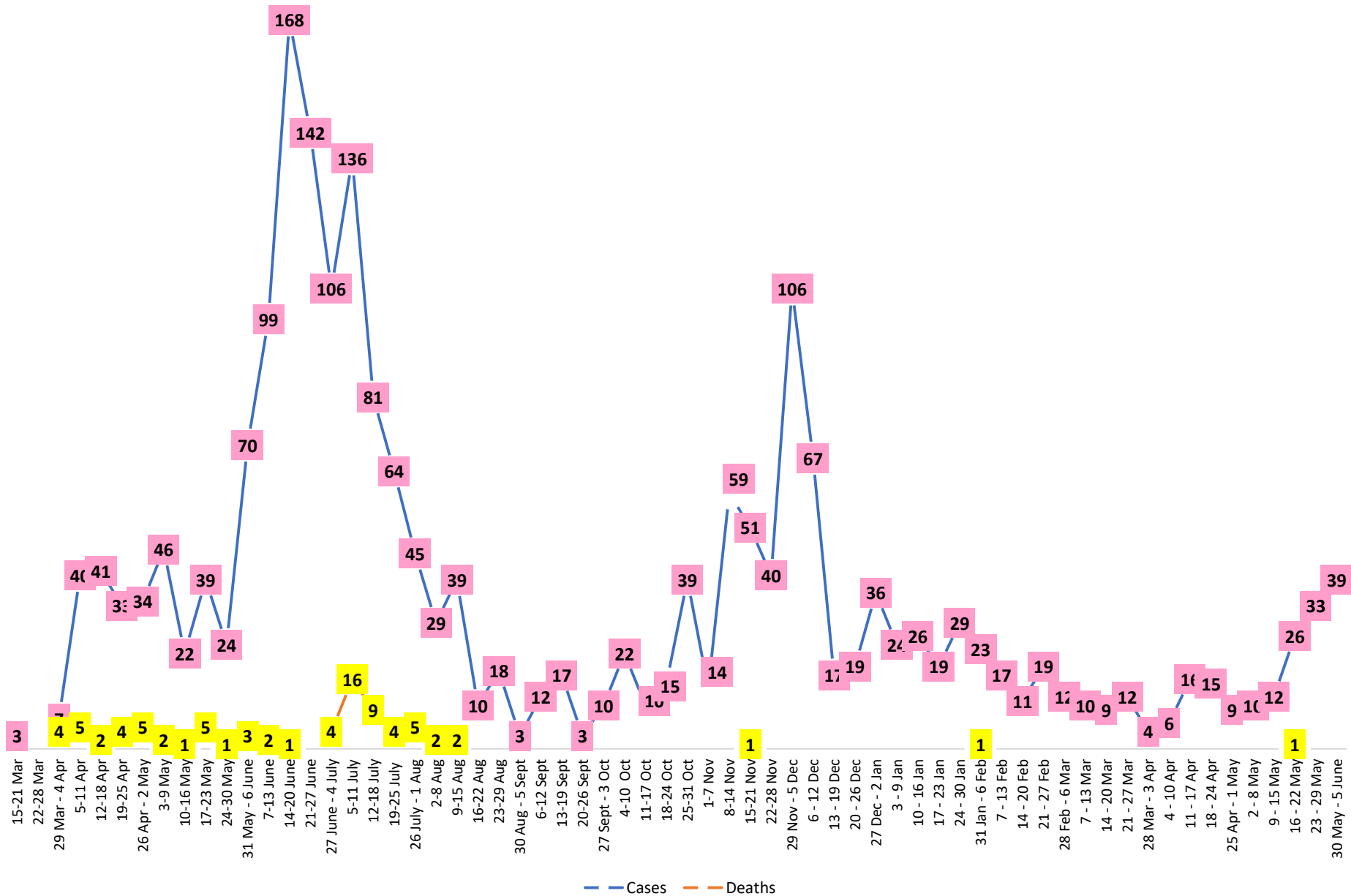
# Summary of COVID-19 Cases by Reporting County, Liberia, 16 March 2020 – 2 June 2021

County			Confirmed Cumulative Cases
	Laboratory Confirmed Cases	Confirmed Cases on Contact List	
<b>Bomi</b>	0	0	23
<b>Bong</b>	0	0	56
<b>Gbarpolu</b>	0	0	11
<b>Grand Bassa</b>	0	0	60
<b>Grand Cape Mount</b>	0	0	20
<b>Grand Kru</b>	0	0	18
<b>Grand Gedeh</b>	0	0	16
<b>Lofa</b>	0	0	45
<b>Margibi</b>	0	0	106
<b>Maryland</b>	0	0	34
<b>Montserrado</b>	<b>8</b>	<b>0</b>	<b>1718</b>
<b>Nimba</b>	0	0	73
<b>Rivercess</b>	0	0	5
<b>River Gee</b>	0	0	36
<b>Sinoe</b>	0	0	6
<b>NATIONAL</b>	<b>8</b>	<b>0</b>	<b>2227</b>

# Demographic Breakdown (Gender & Age) of Confirmed COVID-19 Cases (16 March 2020 – 02 June 2021)

County	<15 years		15 - 34		35 - 54		55+		All ages		Total Confirmed
	M	F	M	F	M	F	M	F	M	F	
Bomi	2	2	3	5	7	3	0	1	12	11	23
Bong	3	1	6	6	20	9	8	3	37	19	56
Gbarpolu	1	2	0	2	4	1	1	0	6	5	11
Grand Bassa	11	2	9	11	13	8	4	2	37	23	60
Grand Cape Mount	0	0	11	0	8	0	1	0	20	0	20
Grand Kru	0	0	2	5	4	5	2	0	8	10	18
Grand Gedeh	0	1	1	2	7	3	2	0	10	6	16
Lofa	3	3	8	3	13	5	8	2	32	13	45
Margibi	6	4	15	13	28	12	18	10	67	39	106
Maryland	2	0	10	6	9	4	1	2	22	12	34
<b>Montserrado</b>	<b>53</b>	<b>53</b>	<b>399</b>	<b>232</b>	<b>499</b>	<b>212</b>	<b>186</b>	<b>84</b>	<b>1137</b>	<b>581</b>	<b>1718</b>
Nimba	1	4	15	10	28	6	5	4	49	24	73
Rivercess	0	0	2	3	0	0	0	0	2	3	5
River Gee	0	0	4	3	19	5	5	0	28	8	36
Sinoe	0	0	1	0	4	1	0	0	5	1	6
<b>National</b>	<b>82</b>	<b>72</b>	<b>486</b>	<b>301</b>	<b>663</b>	<b>274</b>	<b>241</b>	<b>108</b>	<b>1472</b>	<b>755</b>	<b>2227</b>

# COVID-19 WEEKLY EPI-CURVE



# Summary of COVID-19 Deaths by Reporting County, Liberia, 16 March 2020 – 2 June 2021

County	ew Suspected Deaths	COVID-19 Treatment Unit	Total in COVID-19 Treatment Unit	Health Facility	Total in Health Facility	Community	Total in Community	Confirmed Deaths on Contact List	Cumulative Deaths
Bomi	0	0	0	0	1	0	0	0	1
Bong	0	0	0	0	4	0	1	0	5
Gbarpolu	0	0	0	0	2	0	0	0	2
Grand Bassa	0	0	0	0	0	0	0	0	0
Grand Cape Mount	0	0	0	0	0	0	0	0	0
Grand Gedeh	0	0	0	0	0	0	0	0	0
Grand Kru	0	0	0	0	0	0	0	0	0
Lofa	0	0	0	0	6	0	5	0	11
Maryland	0	0	0	0	2	0	0	0	2
Margibi	0	0	2	0	4	0	0	0	6
Montserrado	0	0	9	1	20	0	16	0	46
Nimba	0	0	2	0	5	0	4	0	11
Rivercess	0	0	0	0	1	0	1	0	2
River Gee	0	0	0	0	0	0	0	0	0
Sinoe	0	0	0	0	1	0	0	0	1
<b>National</b>	<b>0</b>	<b>0</b>	<b>13</b>	<b>1</b>	<b>46</b>	<b>0</b>	<b>27</b>	<b>0</b>	<b>86</b>

# Daily and Cumulative Healthcare Worker (HCW) COVID-19 Cases and Deaths by County, Liberia, 16 March 2020 – 2 June 2021

County	DAILY REPORT						CUMULATIVE CASES (ALIVE & DEAD)	
	New Suspected & High Risk Cases (Alive)			New Suspect Death	Laboratory Confirmed Cases	Confirmed Cases on Contact List	Confirmed	Deaths
	Suspect	High Risk	Total					
Bomi	0	0	0	0	0	0	5	0
Bong	0	0	0	0	0	0	19	3
Gbarpolu	0	0	0	0	0	0	1	0
Grand Bassa	0	0	0	0	0	0	21	0
Grand Gedeh	0	0	0	0	0	0	2	0
Grand Kru	0	0	0	0	0	0	14	0
Lofa	0	0	0	0	0	0	16	0
Margibi	0	0	0	0	0	0	12	1
Maryland	0	0	0	0	0	0	16	0
Montserrado	0	0	0	0	0	0	88	1
Nimba	0	0	0	0	0	0	14	0
Rivercess	0	0	0	0	0	0	3	0
River Gee	0	0	0	0	0	0	10	0
Sinoe	0	0	0	0	0	0	3	0
<b>NATIONAL</b>	<b>0</b>	<b>0</b>	<b>0</b>	<b>0</b>	<b>0</b>	<b>0</b>	<b>224</b>	<b>5</b>

# Cadre Cases and Deaths by Health Care Workers (16 March 2020 – 2 June 2021)

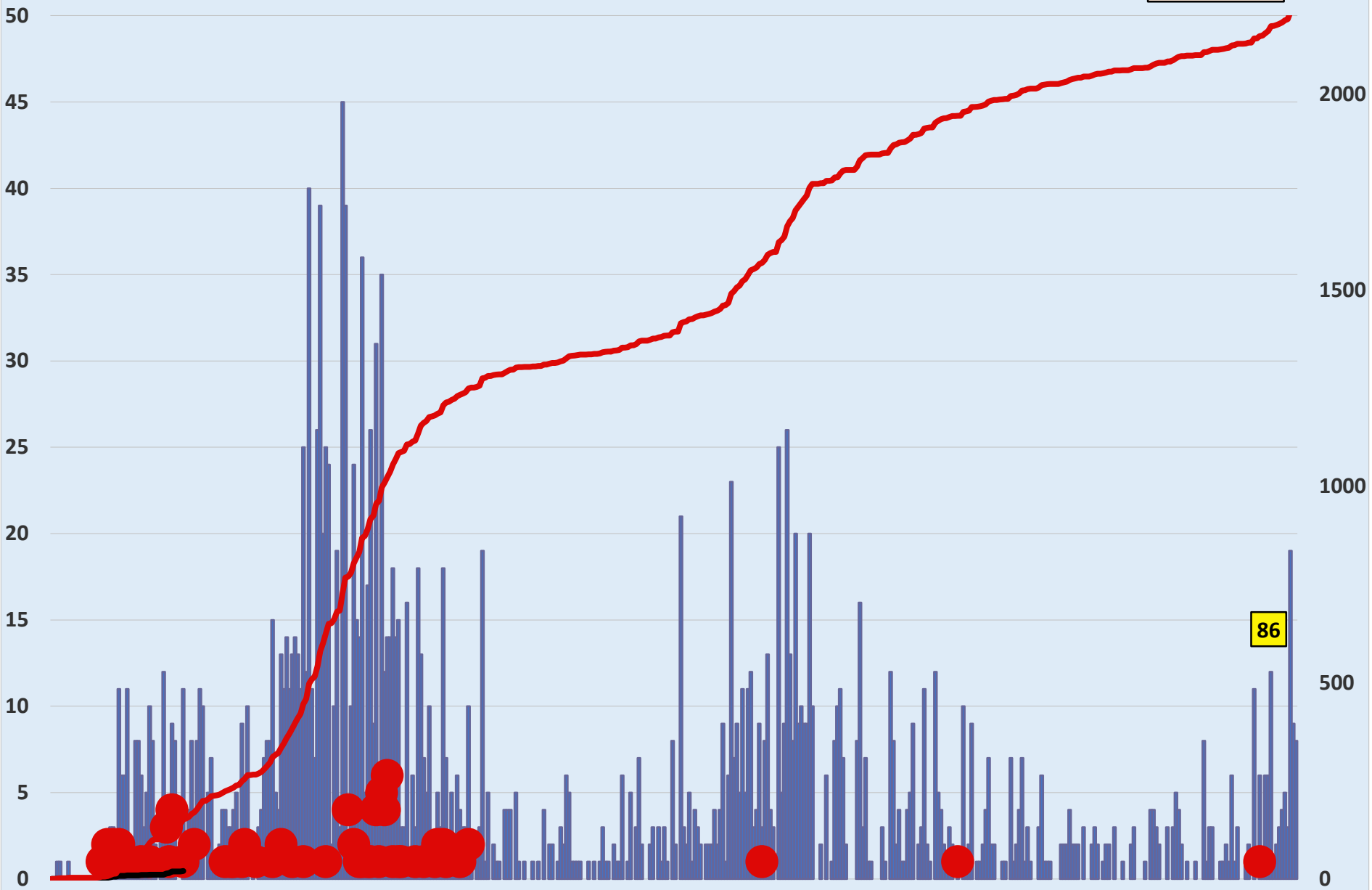
Health Care Worker Cadre	Montserratado		Margibi		Nimba		River Gee		Sinoe		Grand Kru		Gbarpolu		Bong		Lofa		Grand Bassa		Maryland		Bomi		Rivercess		Grand Gedeh		National (Total)	
	Cases	Deaths	Cases	Deaths	Cases	Deaths	Cases	Deaths	Cases	Deaths	Cases	Deaths	Cases	Deaths	Cases	Deaths	Cases	Deaths	Cases	Deaths	Cases	Deaths	Cases	Deaths	Cases	Deaths	Cases	Deaths		
Doctors	17	0	1	0	0	0	1	0	0	0	0	0	0	0	1	0	0	0	1	0	0	0	0	0	0	0	0	21	0	
Pharmacists	4	0	0	0	0	0	0	0	0	0	0	0	0	0	0	0	0	0	0	0	0	0	0	0	0	0	0	4	0	
Nurses	23	1	2	0	2	0	5	0	0	0	2	0	1	1	12	1	8	0	5	0	1	0	1	0	0	0	0	62	3	
Nurse Aid	0	0	0	0	2	0	0	0	0	0	4	0	0	0	0	0	0	0	8	0	2	0	0	0	0	0	0	16	0	
Midwife	0	0	0	0	0	0	1	0	0	0	1	0	0	0	1	0	1	0	1	0	0	0	0	0	0	0	0	5	0	
Physician Assistants	8	0	1	0	1	0	1	0	0	0	1	0	0	0	0	0	1	0	1	0	0	0	0	0	0	0	0	14	0	
Lab Technician	9	0	1	0	2	0	0	0	1	0	1	0	0	0	0	0	2	0	0	0	10	0	0	0	3	0	0	29	0	
Environmental Health Technicians	5	0	0	0	0	0	0	0	0	0	0	0	0	0	0	0	0	0	0	0	0	0	0	0	0	0	0	5	0	
Dieticians	0	0	7	1	0	0	0	0	0	0	0	0	0	0	0	0	0	0	0	0	0	0	0	0	0	0	0	7	1	
Hospital Cleaner	1	0	0	0	0	0	0	0	0	0	1	0	0	0	1	0	0	0	1	0	2	0	0	0	0	0	0	6	0	
Others*	21	0	0	0	7	0	2	0	2	0	4	0	0	0	4	1	4	0	4	0	1	0	4	0	0	2	0	55	1	
<b>Total:</b>	<b>88</b>	<b>1</b>	<b>12</b>	<b>1</b>	<b>14</b>	<b>0</b>	<b>10</b>	<b>0</b>	<b>3</b>	<b>0</b>	<b>14</b>	<b>0</b>	<b>1</b>	<b>1</b>	<b>19</b>	<b>2</b>	<b>16</b>	<b>0</b>	<b>21</b>	<b>0</b>	<b>16</b>	<b>0</b>	<b>5</b>	<b>0</b>	<b>3</b>	<b>0</b>	<b>2</b>	<b>0</b>	<b>224</b>	<b>5</b>

**\*Others include the following:**

***Radiologist, Microbiologist, Epidemiologist, Dispenser, Licensed Practical Nurse, Psychosocial worker, Hygienist, Logistician, Vaccinator, Ambulance Driver, Procurement Officer, Registrar, Accountant, Secretary, Hospital Administrator, Community Health Volunteer, GIS Specialist, EOC Coordinator***

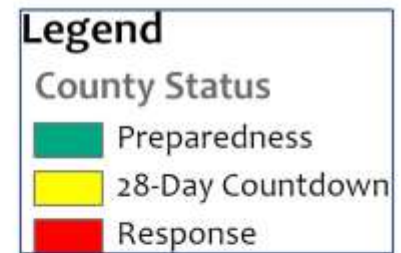
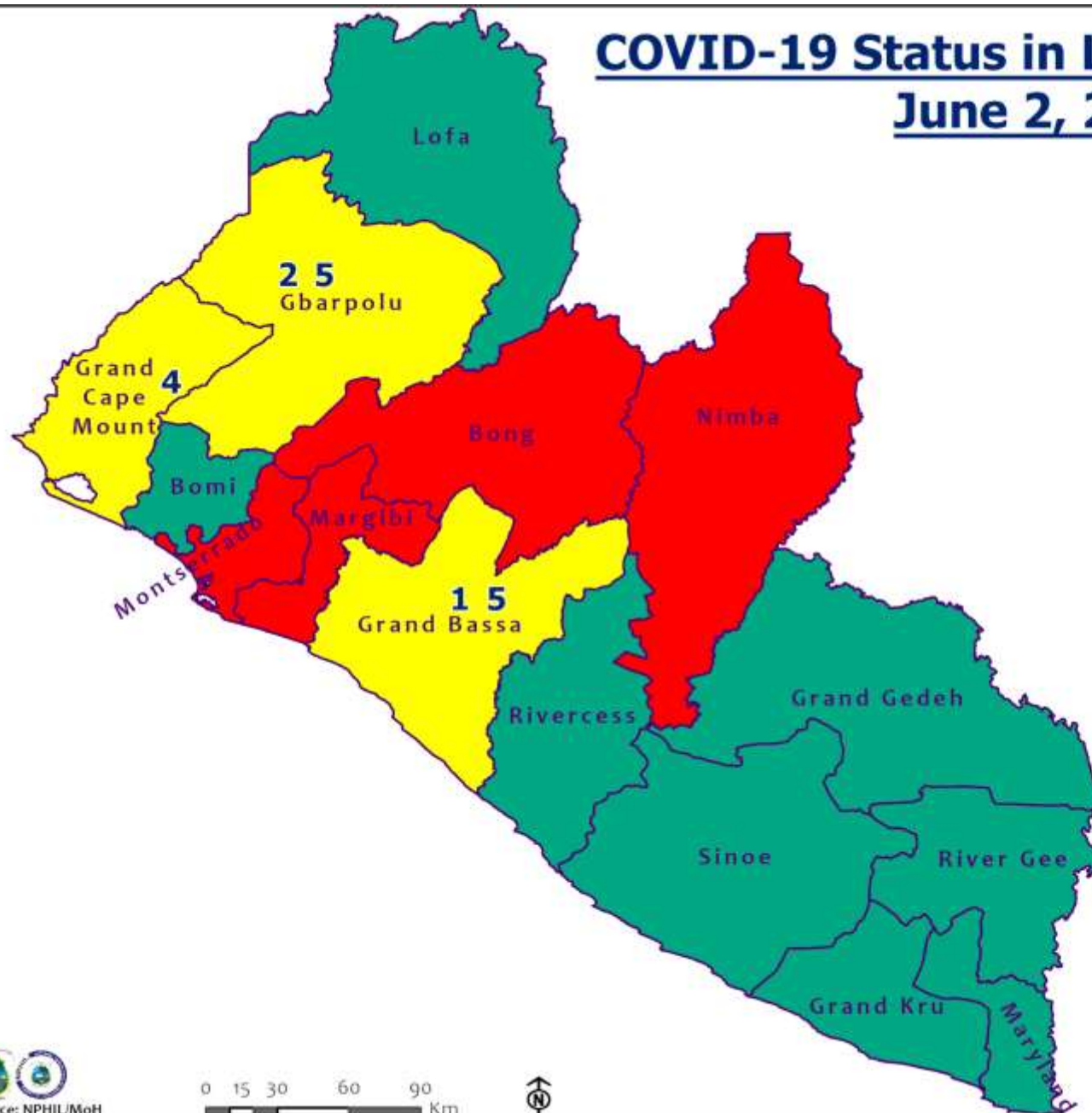
# EPI-Curve of Confirmed Cases and Deaths

2227





# COVID-19 Status in Liberia by County June 2, 2021

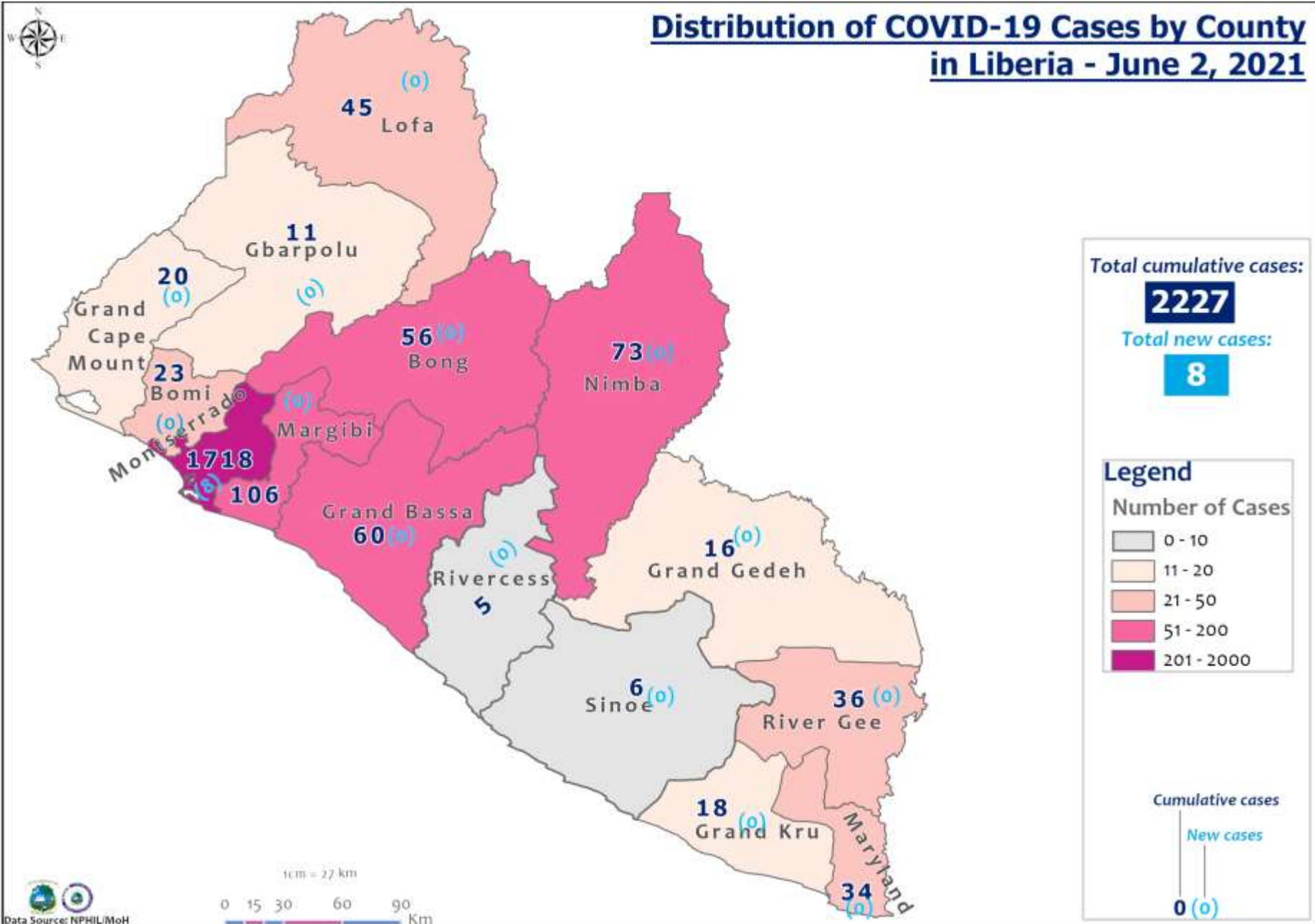


Data Source: NPHIL/MoH

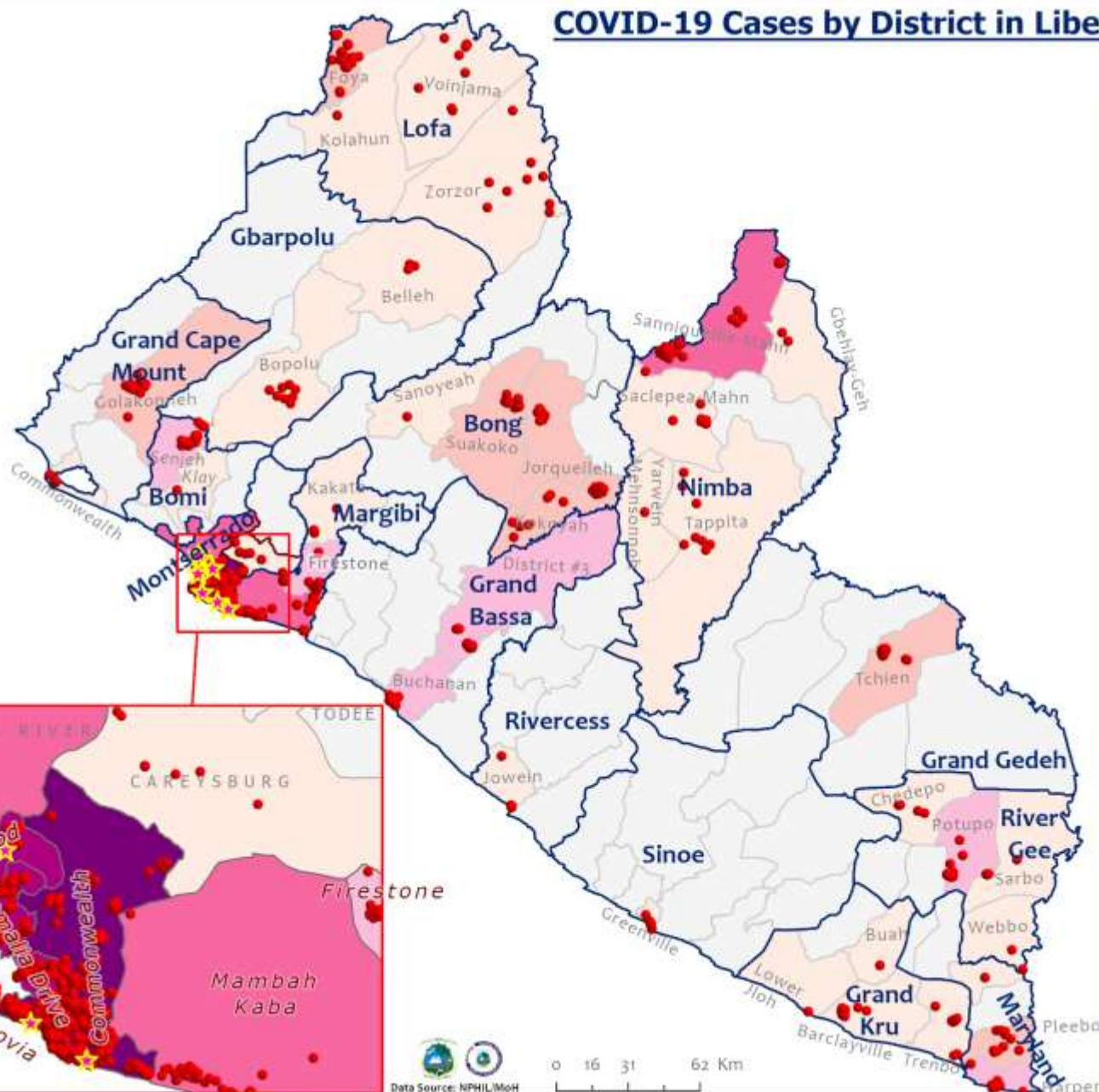
0 15 30 60 90  
Km



## Distribution of COVID-19 Cases by County in Liberia - June 2, 2021



# COVID-19 Cases by District in Liberia - June 2, 2021



**Total Cases: 2227**

Affected Counties	Cumulative Cases
Montserrado	1718
Margibi	106
Nimba	73
Grand Bassa	60
Bong	56
Lofa	45
River Gee	36
Maryland	34
Bomi	23
Grand Cape Mount	20
Grand Kru	18
Grand Gedeh	16
Gbarpolu	11
Sinoe	6
Rivercess	5

## Legend

### Case Status

- New confirmed case
- Confirmed cases

### Cases / District

- 0
- 1-10
- 11-20
- 21-50
- 51-100
- 101-200
- 201-600



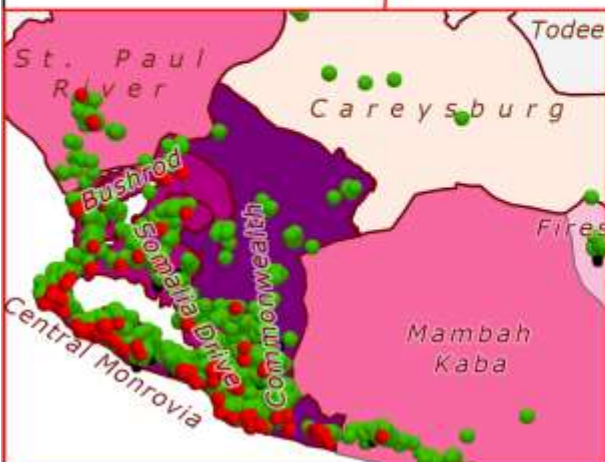
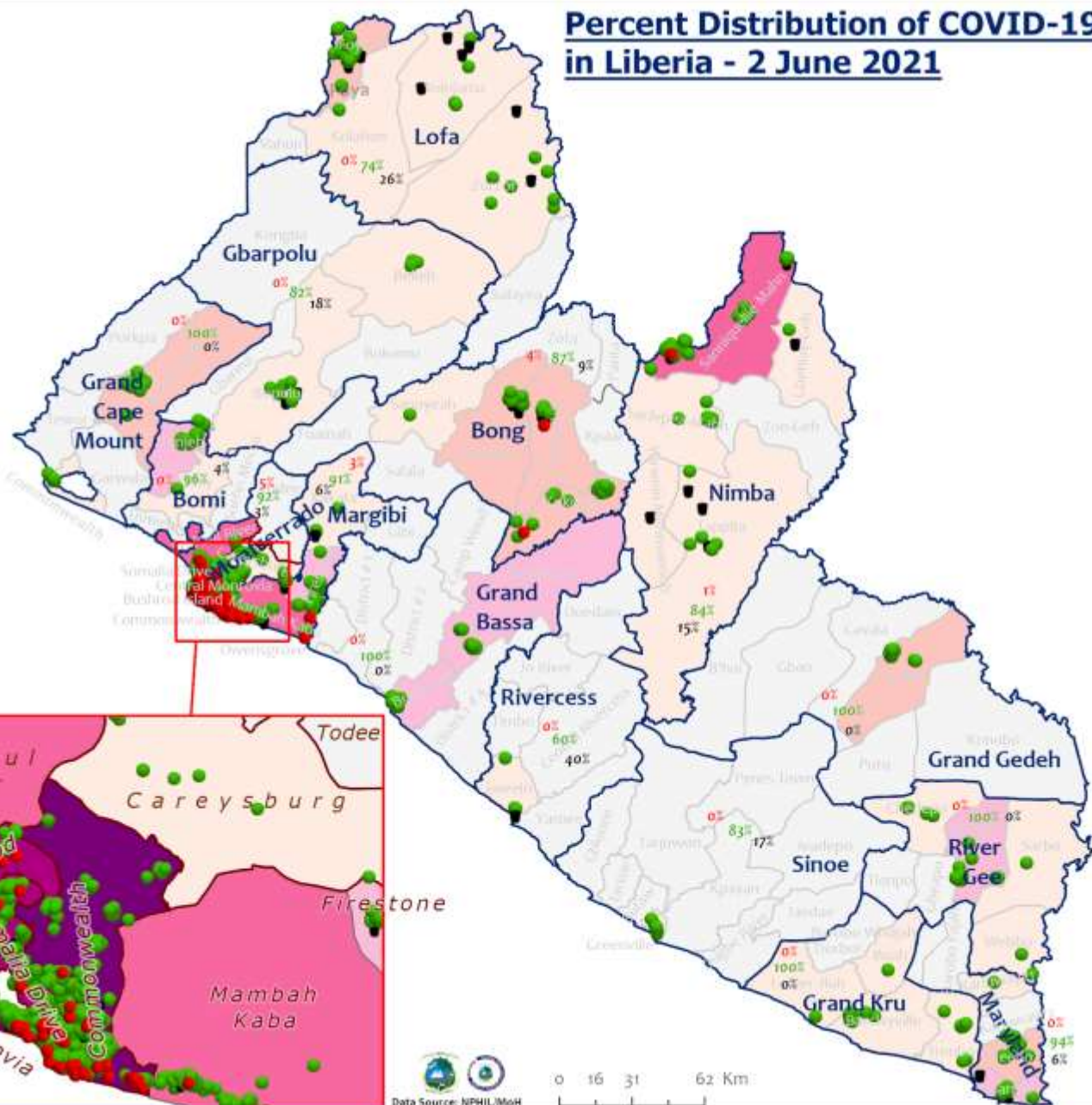
0 16 31 62 Km

Data Source: NPHIL/MoH





## Percent Distribution of COVID-19 Cases by Status in Liberia - 2 June 2021



**Total Cases: 2227**

Affected Counties	Cumulative Cases
Montserrado	1718
Margibi	106
Nimba	73
Grand Bassa	60
Bong	56
Lofa	45
River Gee	36
Maryland	34
Bomi	23
Grand Cape Mount	20
Grand Kru	18
Grand Gedeh	16
Gbarpolu	11
Sinoe	6
Rivercess	5

**Legend**

**Case Status**

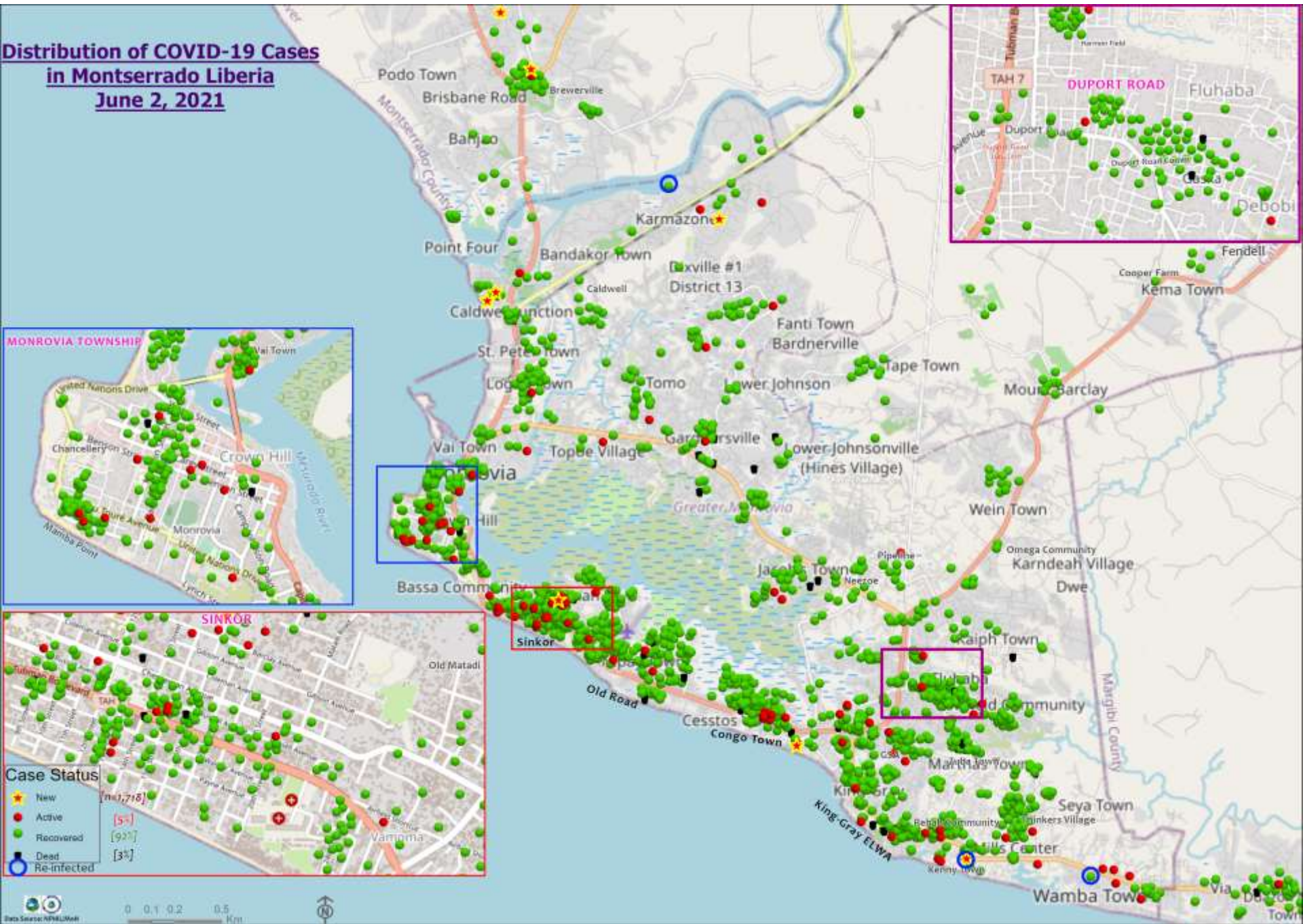
- Active [4%]
- Recovered [92%]
- Dead [4%]

**Cases / District**

- 0
- 1-10
- 11-20
- 21-50
- 51-100
- 101-200
- 201-600



# Distribution of COVID-19 Cases in Montserratado Liberia June 2, 2021

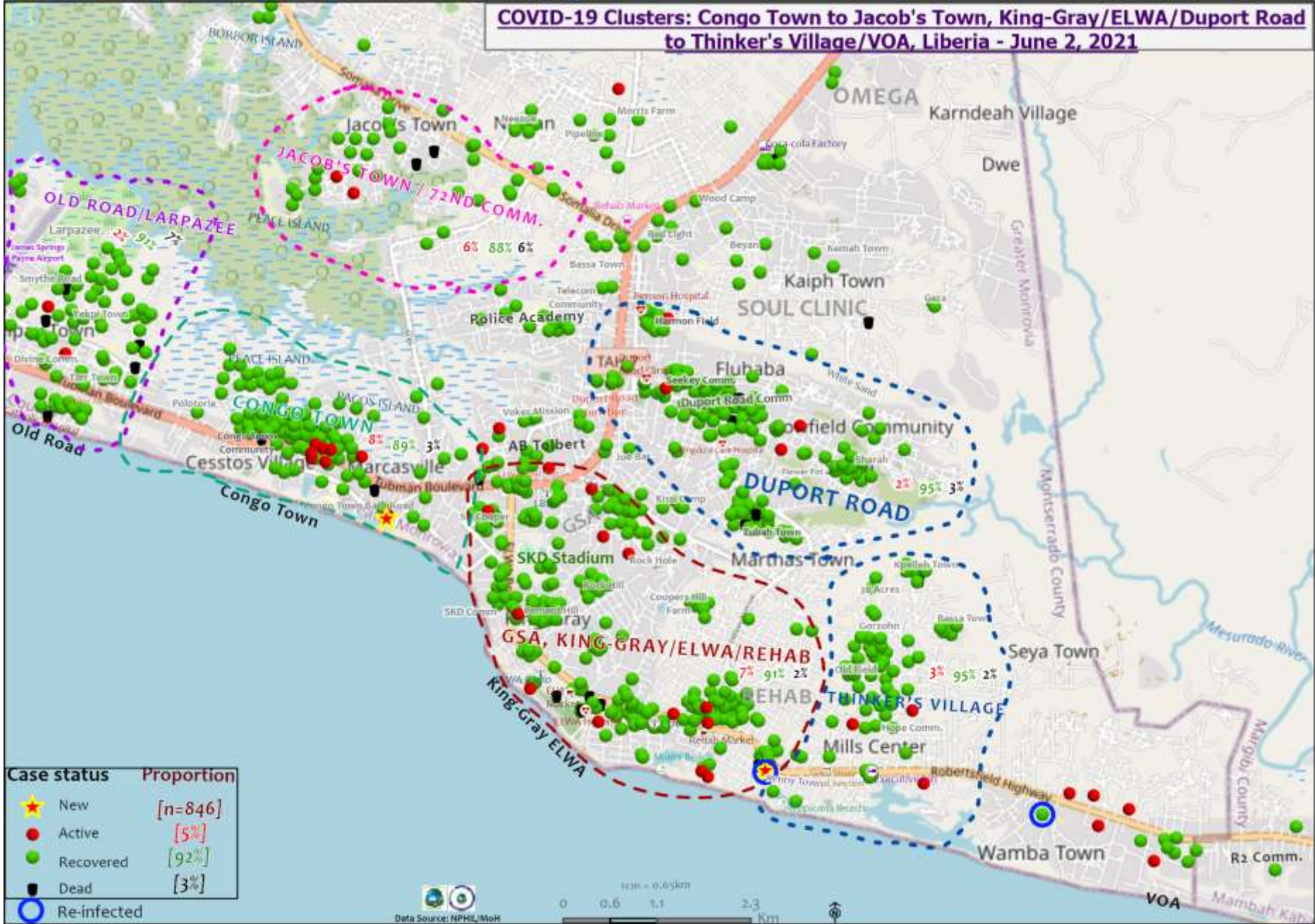


**Case Status**

★	New	[14,718]
●	Active	[5%]
●	Recovered	[92%]
■	Dead	[3%]
○	Re-infected	



**COVID-19 Clusters: Congo Town to Jacob's Town, King-Gray/ELWA/Duport Road to Thinker's Village/VOA, Liberia - June 2, 2021**



Case status	Proportion
★ New	[n=846]
● Active	[5%]
● Recovered	[92%]
■ Dead	[3%]
○ Re-infected	



## Daily Summary Report at Treatment Units – 2 June 2021

Treatment Facility Name	New Admissions	Cumulative Admission	Daily Discharges	Cumulative Recoveries	Daily Deaths	Cumulative Deaths	Currently in treatment
Bomi LGH Treatment Unit	0	18	0	18	0	0	0
Bong Treatment Unit	0	26	0	26	0	0	0
Chief Jallahlone Hospital Treatment Unit	0	1	0	1	0	0	0
Grand Bassa Arcelor Mittal Treatment Unit	0	6	0	6	0	0	0
Grand Bassa LGH Treatment Unit	0	3	0	3	0	0	0
LAC Treatment Unit	0	42	0	42	0	0	0
Starbase Treatment Unit	0	648	1	639	0	9	0
Union Treatment Center	0	78	0	78	0	0	0
Duside Hospital Treatment Unit	0	42	0	40	0	2	0
Martha Tubman Hospital Treatment Unit	0	13	0	13	0	0	0
Rally Time Treatment Unit	0	4	0	4	0	0	0
Sasstown Treatment Unit	0	7	0	7	0	0	0
Behwan Treatment Unit	0	7	0	7	0	0	0
FJ Grante Hospital Treatment Unit	0	5	0	5	0	0	0
JJ Dossen Hospital Treatment Unit	0	9	0	9	0	0	0
Pleebo Health Center Treatment Unit	0	21	0	21	0	0	0
Tellewoyan Memorial Hospital Treatment Unit	0	13	0	13	0	0	0
Foya Borma Hospital Treatment Unit	0	12	0	12	0	0	0
Zorzor Treatment Unit	0	6	0	6	0	0	0
Robert Sport Treatment Unit	0	1	0	1	0	0	0
Ganta United Methodist Hospital Treatment Unit	0	1	0	1	0	0	0
Arcelor Mittal Yekepa Treatment Unit	0	12	0	12	0	0	0
Jackson F. Doe Treatment Unit	0	5	0	4	0	1	0
St. Frances Hospital Treatment Unit	0	2	0	2	0	0	0
Fish Town Hospital Treatment Unit	0	36	0	36	0	0	0
E&J Medical Center Treatment Unit	0	20	0	19	0	1	0
<b>TOTAL</b>	<b>0</b>	<b>1038</b>	<b>1</b>	<b>1025</b>	<b>0</b>	<b>13</b>	<b>0</b>

2 suspected cases awaiting PCR test results



## Home-Base Care of COVID-19 Cases

County	New Admissions	Currently in Admissions	No. Followed-up (In-person/Phone)	Cumulative Admissions	New Recoveries	Cumulative Recoveries	Referrals to TU	Cumulative Referrals to TU	New Death	Cumulative Deaths
Montserratado	6	29	25	283	0	246	0	8	0	0
Nimba				0						
Margibi				0						
Bong				0						
<b>Total:</b>	6	29	25	283	0	246	0	8	0	0

# Laboratory Samples Evaluated – 02 June 2021

County	Sample Evaluated	New Positive	Repeat Positive	Initial Negative	Repeat Test Negative	Pending Lab Result
Bong	1	0	0	1	0	0
Grand Bassa	2	0	0	2	0	0
Margibi	11	0	0	11	0	0
Maryland	1	0	0	1	0	0
Montserrado	230	8	0	222	0	0
<b>TOTAL</b>	<b>245</b>	<b>8</b>	<b>0</b>	<b>237</b>	<b>0</b>	<b>0</b>
<b>Outgoing Traveler</b>	134	5	0	129	0	0
<b>Incoming Traveler</b>	84	0	0	84	0	0
<b>Voluntary</b>	13	1	0	12	0	0
<b>AFI Study</b>	14	2	0	12	0	0
<b>NRL</b>	232	7	0	225	0	0
<b>UN Clinic Lab</b>	13	1*	0	12	0	0

\*Contact of a case

# Incoming Travelers Testing Positive for COVID-19 (May 2021)

Country of embarkment	Cases
Ghana	10
UAE	5
USA	5
Australia	1
Pakistan	1
Nigeria	1
Lebanon	1
Canada	1
India	1
Others	9
<b>Total</b>	<b>35</b>

Occupation	Cases
Business	8
Student	5
PFM Consultant	1
Physician	1
Diplomat	1
Nurse Aide	1
Retired	1
Geologist	1
Others	16
<b>Total</b>	<b>35</b>

Nationality	Cases
Liberian	13
American	4
Ghanaian	4
Indian	2
Pakistani	1
Nigerian	1
Lebanese	1
Canadian	1
Australian	1
Others	7
<b>Total</b>	<b>35</b>

Flight	Cases
Kenya Airways	14
ASKY	9
SN Brussels	6
Air France	2
AWA	1
Others	3
<b>Total</b>	<b>35</b>

# Summary of COVID-19 Contact Tracing in Response Counties

County	New Contacts Line listed	Cumulative Contacts	No. of Health Care Workers as Contacts	Cumulative no. of Health Care Workers as contacts	Contacts became a case	Cumulative contacts that became a case	Contacts Completed 14 Days	Cumulative Contacts Completing 14 Days	Contacts Under Follow-up	Contacts lost to Follow-up
<b>Montserratado</b>	0	6253	0	512	0	189	0	5497	55	3
<b>Margibi</b>	0	480	0	125	0	42	0	470	6	0
<b>Grand Bassa</b>	0	457	0	140	0	51	0	410	0	0
<b>Sinoe</b>	0	191	0	30	0	1	0	191	0	0
<b>Lofa</b>	0	758	0	103	0	34	0	726	0	0
<b>Nimba</b>	0	613	0	53	0	25	0	550	0	0
<b>Bong</b>	0	302	0	70	0	28	0	300	0	0
<b>Gbarpolu</b>	0	87	0	13	0	8	0	87	0	0
<b>Grand Cape Mount</b>	0	49	0	3	0	4	0	51	0	0
<b>RiverGee</b>	0	123	0	13	0	30	0	123	0	0
<b>Maryland</b>	0	208	0	28	0	19	0	136	0	0
<b>Bomi</b>	0	180	0	17	0	15	0	177	0	0
<b>Rivercess</b>	0	102	0	55	0	0	0	88	0	0
<b>Grand Kru</b>	0	333	0	131	0	17	0	330	0	0
<b>Grand Gedeh</b>	0	163	0	49	0	6	0	125	0	0
<b>National</b>	<b>0</b>	<b>10299</b>	<b>0</b>	<b>1342</b>	<b>0</b>	<b>469</b>	<b>0</b>	<b>9261</b>	<b>61</b>	<b>3</b>

**Thank you for Listening**