



# **Liberia COVID-19 Daily Sitrep 436 (May 25, 2021)**

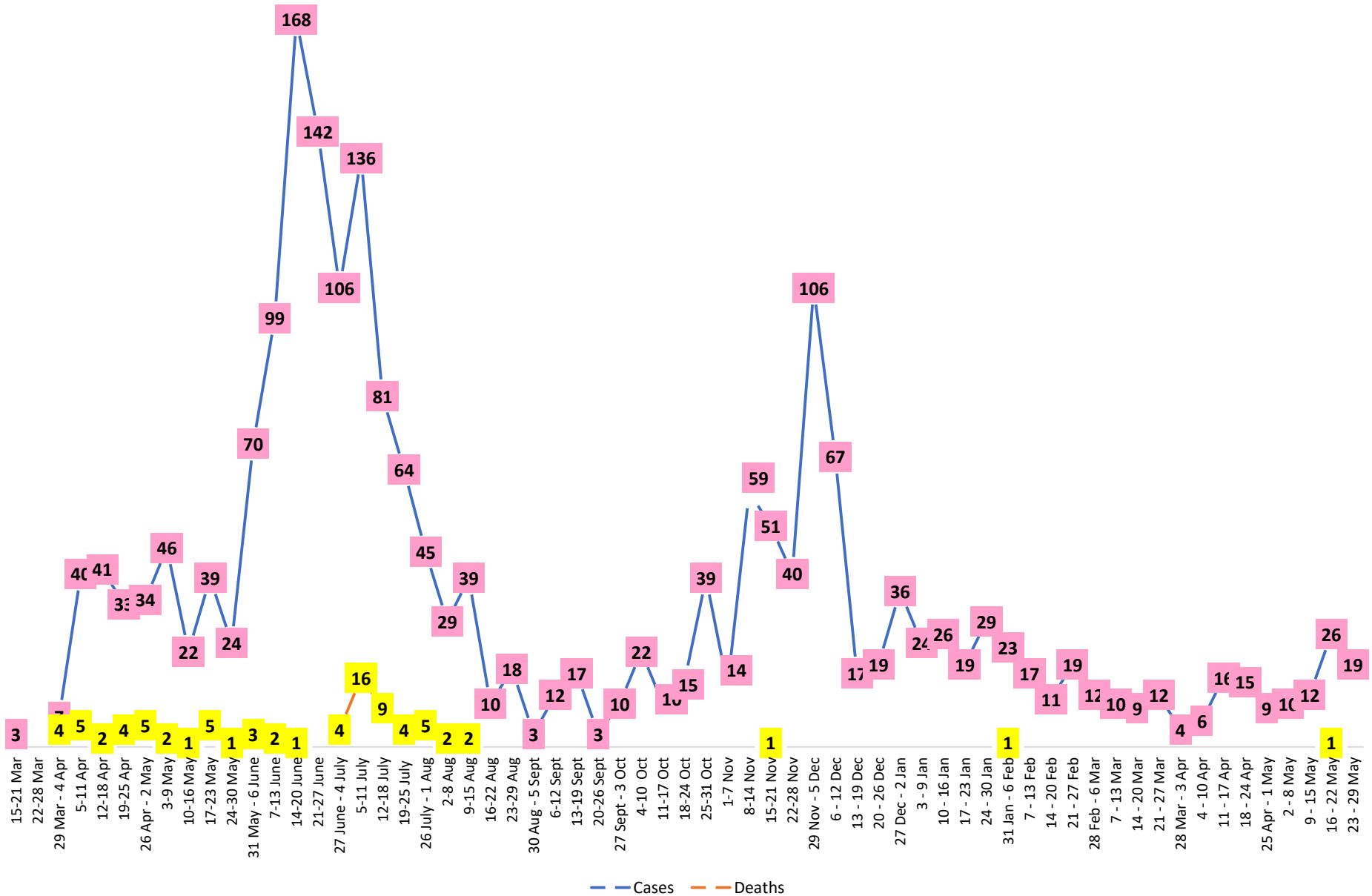
# Summary of COVID-19 Cases by Reporting County, Liberia, 16 March 2020 – 25 May 2021

<b>Bong</b>	0	0	54
<b>Gbarpolu</b>	0	0	11
<b>Grand Bassa</b>	0	0	60
<b>Grand Cape Mount</b>	0	0	20
<b>Grand Kru</b>	0	0	18
<b>Grand Gedeh</b>	0	0	16
<b>Lofa</b>	0	0	45
<b>Margibi</b>	0	0	105
<b>Maryland</b>	0	0	34
<b>Montserrado</b>	<b>1</b>	<b>0</b>	<b>1668</b>
<b>Nimba</b>	0	0	73
<b>Rivercess</b>	0	0	5
<b>River Gee</b>	0	0	36
<b>Sinoe</b>	0	0	6
<b>NATIONAL</b>	<b>1</b>	<b>0</b>	<b>2174</b>

# Demographic Breakdown (Gender & Age) of Confirmed COVID-19 Cases (16 March 2020 – 25 May 2021)

County	<15 years		15 - 34		35 - 54		55+		All ages		Total Confirmed
	M	F	M	F	M	F	M	F	M	F	
Bomi	2	2	3	5	7	3	0	1	12	11	23
Bong	3	1	4	6	20	9	8	3	35	19	54
Gbarpolu	1	2	0	2	4	1	1	0	6	5	11
Grand Bassa	11	2	9	11	13	8	4	2	37	23	60
Grand Cape Mount	0	0	11	0	8	0	1	0	20	0	20
Grand Kru	0	0	2	5	4	5	2	0	8	10	18
Grand Gedeh	0	1	1	2	7	3	2	0	10	6	16
Lofa	3	3	8	3	13	5	8	2	32	13	45
Margibi	6	4	15	13	28	12	17	10	66	39	105
Maryland	2	0	10	6	9	4	1	2	22	12	34
<b>Montserrado</b>	53	50	390	228	477	206	181	83	1101	567	1668
Nimba	1	4	15	10	28	6	5	4	49	24	73
Rivercess	0	0	2	3	0	0	0	0	2	3	5
River Gee	0	0	4	3	19	5	5	0	28	8	36
Sinoe	0	0	1	0	4	1	0	0	5	1	6
<b>National</b>	<b>82</b>	<b>69</b>	<b>475</b>	<b>297</b>	<b>641</b>	<b>268</b>	<b>235</b>	<b>107</b>	<b>1433</b>	<b>741</b>	<b>2174</b>

# COVID-19 WEEKLY EPI-CURVE



# Summary of COVID-19 Deaths by Reporting County, Liberia, 16 March 2020 – 25 May 2021

County	ew Suspected Deaths	COVID-19 Treatment Unit	Total in COVID-19 Treatment Unit	Health Facility	Total in Health Facility	Community	Total in Community	Confirmed Deaths on Contact List	Cumulative Deaths
Bomi	0	0	0	0	1	0	0	0	1
Bong	0	0	0	0	4	0	1	0	5
Gbarpolu	0	0	0	0	2	0	0	0	2
Grand Bassa	0	0	0	0	0	0	0	0	0
Grand Cape Mount	0	0	0	0	0	0	0	0	0
Grand Gedeh	0	0	0	0	0	0	0	0	0
Grand Kru	0	0	0	0	0	0	0	0	0
Lofa	0	0	0	0	6	0	5	0	11
Maryland	0	0	0	0	2	0	0	0	2
Margibi	0	0	2	0	4	0	0	0	6
Montserrado	0	0	9	1	20	0	16	0	46
Nimba	0	0	2	0	5	0	4	0	11
Rivercess	0	0	0	0	1	0	1	0	2
River Gee	0	0	0	0	0	0	0	0	0
Sinoe	0	0	0	0	1	0	0	0	1
<b>National</b>	<b>0</b>	<b>0</b>	<b>13</b>	<b>1</b>	<b>46</b>	<b>0</b>	<b>27</b>	<b>0</b>	<b>86</b>

# Daily and Cumulative Healthcare Worker (HCW) COVID-19 Cases and Deaths by County, Liberia, 16 March 2020 – 25 May 2021

County	DAILY REPORT						CUMULATIVE CASES (ALIVE & DEAD)	
	New Suspected & High Risk Cases (Alive)			New Suspect Death	Laboratory Confirmed Cases	Confirmed Cases on Contact List	Confirmed	Deaths
	Suspect	High Risk	Total					
Bomi	0	0	0	0	0	0	5	0
Bong	0	0	0	0	0	0	19	3
Gbarpolu	0	0	0	0	0	0	1	0
Grand Bassa	0	0	0	0	0	0	21	0
Grand Gedeh	0	0	0	0	0	0	2	0
Grand Kru	0	0	0	0	0	0	14	0
Lofa	0	0	0	0	0	0	16	0
Margibi	0	0	0	0	0	0	12	1
Maryland	0	0	0	0	0	0	16	0
Montserrado	0	0	0	0	0	0	88	1
Nimba	0	0	0	0	0	0	14	0
Rivercess	0	0	0	0	0	0	3	0
River Gee	0	0	0	0	0	0	10	0
Sinoe	0	0	0	0	0	0	3	0
NATIONAL	0	0	0	0	0	0	224	5

# Cadre Cases and Deaths by Health Care Workers (16 March 2020 – 25 May 2021)

	National (Total)	Deaths	Cases	Grand Gedeh	Deaths	Cases	Rivercess	Deaths	Cases	Bomi	Deaths	Cases	Maryland	Deaths	Cases	Grand Bassa	Deaths	Cases	Lofa	Deaths	Cases	Bong	Deaths	Cases	Gbarpolu	Deaths	Cases	Grand Kru	Deaths	Cases	Sinoe	Deaths	Cases	River Gee	Deaths	Cases	Nimba	Deaths	Cases	Margibi	Deaths	Cases	Montserrat	Deaths	Cases
		Health Care Worker Cadre	Deaths		Cases	Deaths		Cases	Deaths		Cases	Deaths		Cases	Deaths		Cases	Deaths		Cases	Deaths		Cases	Deaths		Cases	Deaths		Cases	Deaths		Cases	Deaths		Cases	Deaths		Cases	Deaths		Cases	Deaths		Cases	Deaths
Doctors		0	21		0	0		0	0		0	0		0	0		0	1		0	0		0	1		0	0		0	0		0	0		0	0		0	0		0	1		0	17
Pharmacists		0	4		0	0		0	0		0	0		0	0		0	0		0	0		0	0		0	0		0	0		0	0		0	0		0	0		0	0		0	4
Nurses		3	62		0	0		0	0		0	1		0	1		0	5		8	0		1	12		1	1		0	2		0	0		5	0		2	0		2	0		1	23
Nurse Aid		0	16		0	0		0	0		0	0		0	2		0	8		0	0		0	0		0	0		4	0		0	0		0	0		2	0		0	0		0	0
Midwife		0	5		0	0		0	0		0	0		0	0		0	1		0	1		0	1		0	0		1	0		0	0		1	0		1	0		0	0		0	0
Physician Assistants		0	14		0	0		0	0		0	0		0	0		0	1		0	1		0	0		0	0		1	0		0	0		1	0		1	0		1	0		0	8
Lab Technician		0	29		0	0		0	0		0	0		0	10		0	0		0	2		0	0		0	0		1	0		0	0		0	0		2	0		1	0		0	9
Environmental Health Technicians		0	5		0	0		0	0		0	0		0	0		0	0		0	0		0	0		0	0		0	0		0	0		0	0		0	0		0	0		0	5
Dieticians		1	7		0	0		0	0		0	0		0	0		0	0		0	0		0	0		0	0		0	0		0	0		0	0		1	0		7	0		0	0
Hospital Cleaner		0	6		0	0		0	0		0	0		0	2		0	1		0	0		0	1		0	0		1	0		0	0		0	0		0	0		0	0		0	1
Others*		1	55		0	2		0	0		0	4		0	0		0	4		0	4		1	4		0	0		4	0		2	0		2	0		7	0		0	0		0	21
Total:		5	224		0	2		0	3		0	5		0	16		0	21		0	16		2	19		1	1		0	14		0	3		0	10		1	14		1	12		1	88

*\*Others include the following:*

*Radiologist, Microbiologist, Epidemiologist, Dispenser, Licensed Practical Nurse, Psychosocial worker, Hygienist, Logistician, Vaccinator, Ambulance Driver, Procurement Officer, Registrar, Accountant, Secretary, Hospital Administrator, Community Health Volunteer, GIS Specialist, EOC Coordinator*

EPI-Curve of Confirmed Cases and Deaths

2174

2000

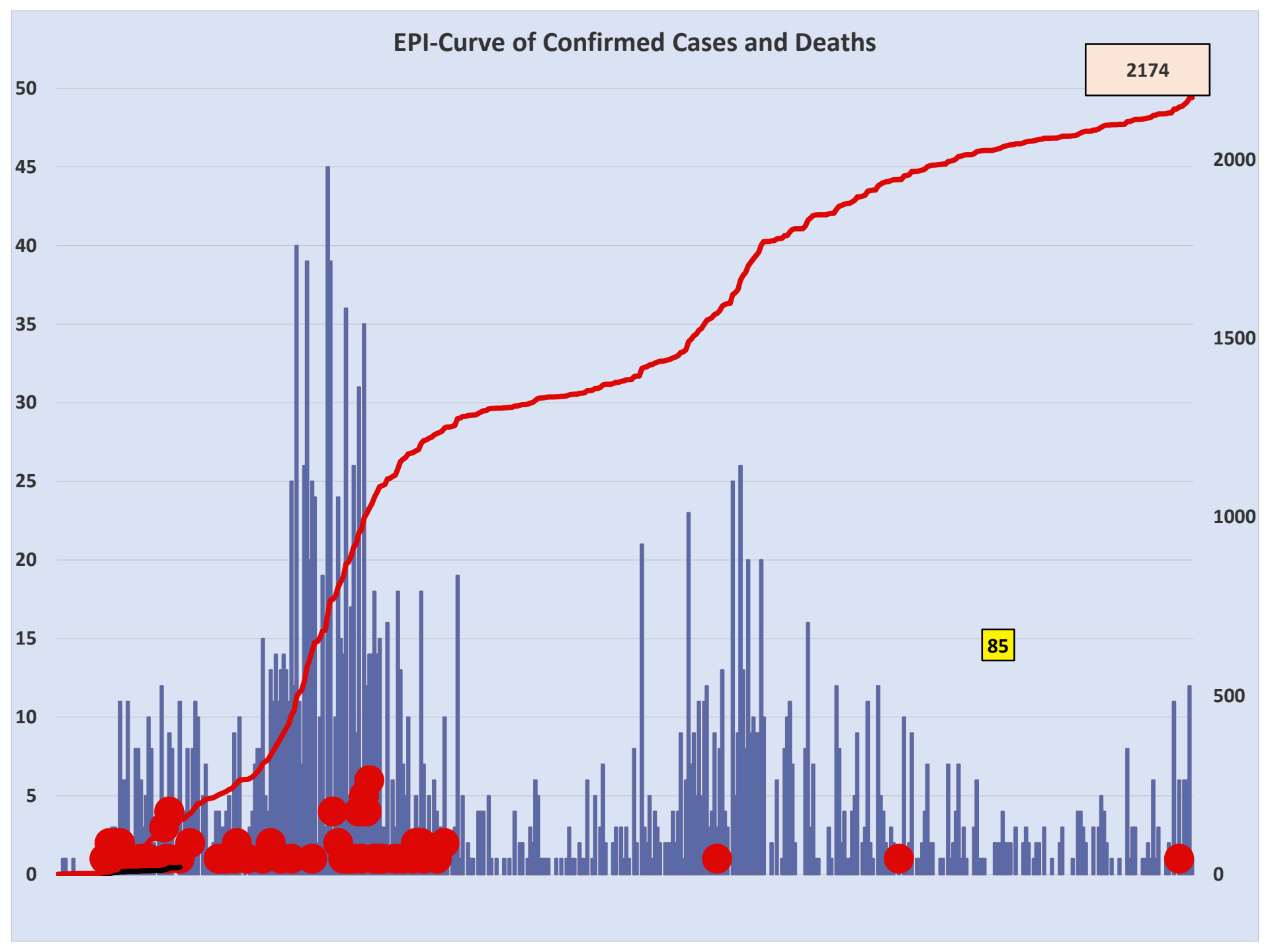
1500

1000

500

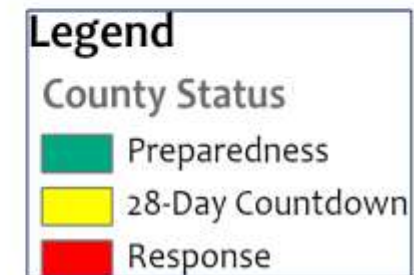
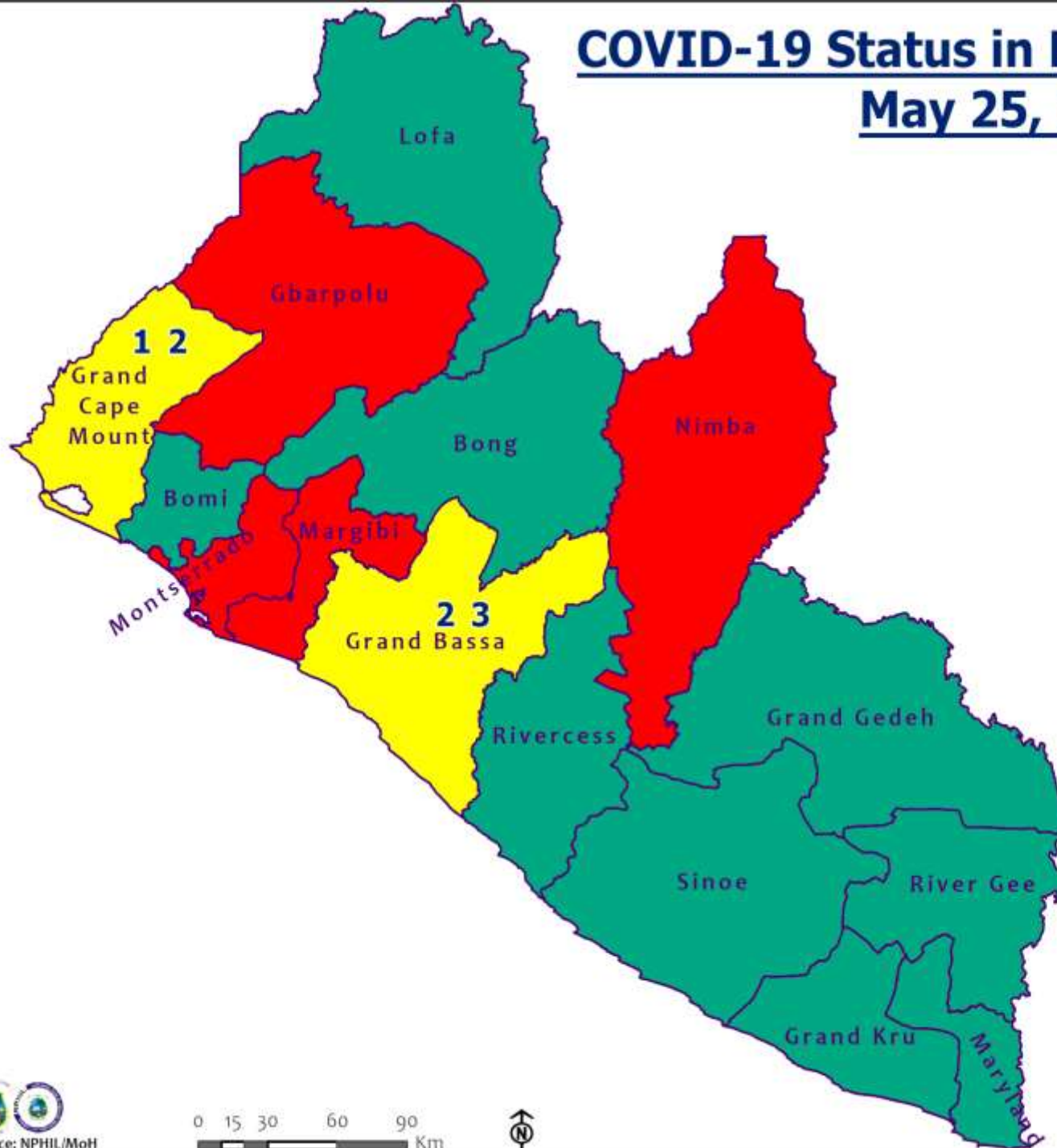
0

85

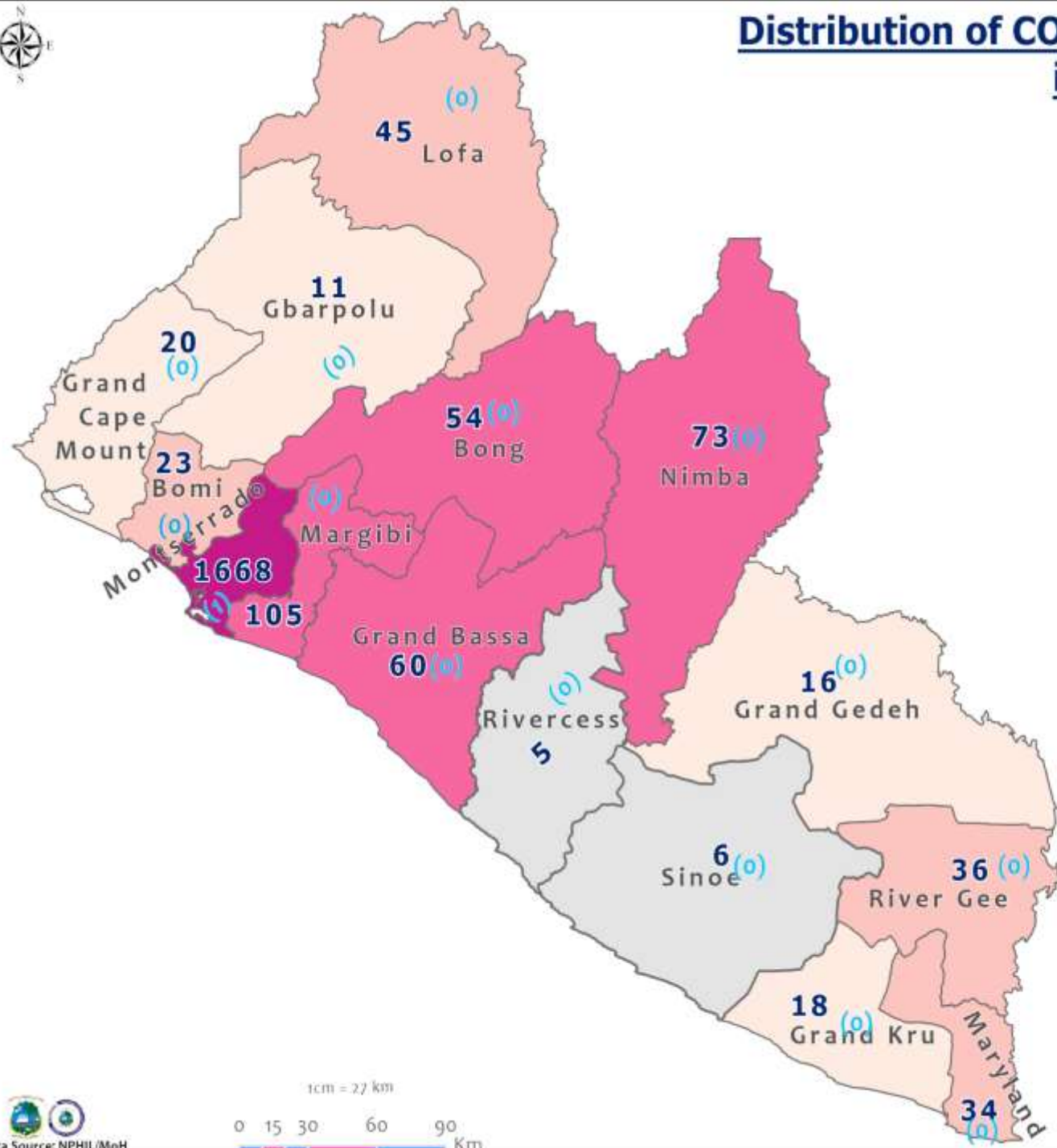


# COVID-19 Status in Liberia by County

## May 25, 2021



# Distribution of COVID-19 Cases by County in Liberia - May 25, 2021



Total cumulative cases:

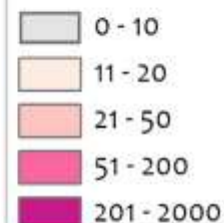
**2174**

Total new cases:

**1**

## Legend

Number of Cases

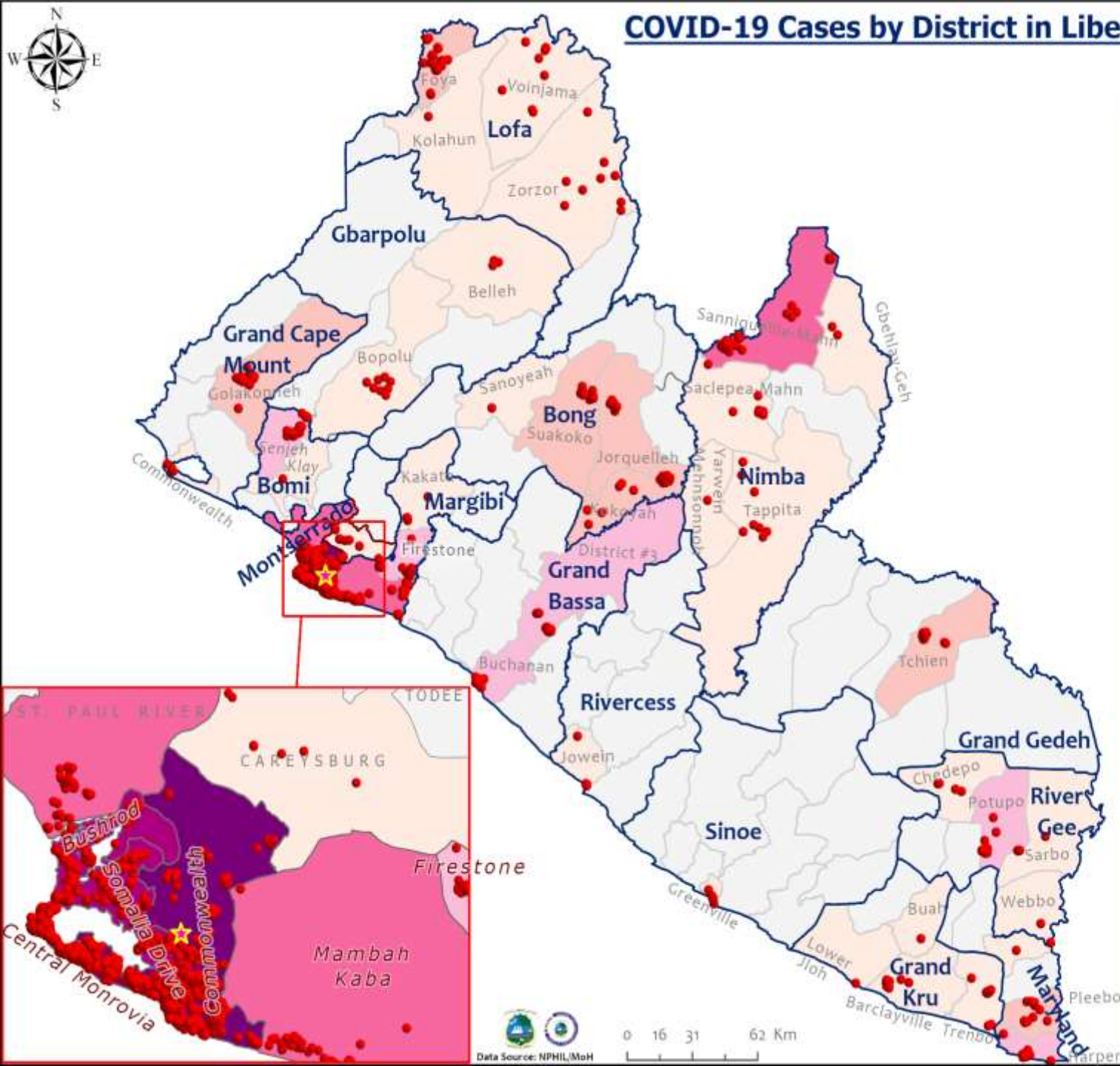


Cumulative cases

New cases

0 (0)

# COVID-19 Cases by District in Liberia - May 25, 2021



**Total Cases: 2174**

Affected Counties	Cumulative Cases
Montserrado	1668
Margibi	105
Nimba	73
Grand Bassa	60
Bong	54
Lofa	45
River Gee	36
Maryland	34
Bomi	23
Grand Cape Mount	20
Grand Kru	18
Grand Gedeh	16
Gbarpolu	11
Sinoe	6
Rivercess	5



# Percent Distribution of COVID-19 Cases by Status in Liberia - 25 May 2021

**Total Cases: 2174**

Affected Counties	Cumulative Cases
Montserrado	1668
Margibi	105
Nimba	73
Grand Bassa	60
Bong	54
Lofa	45
River Gee	36
Maryland	34
Bomi	23
Grand Cape Mount	20
Grand Kru	18
Grand Gedeh	16
Gbarpolu	11
Sinoe	6
Rivercess	5

## Legend

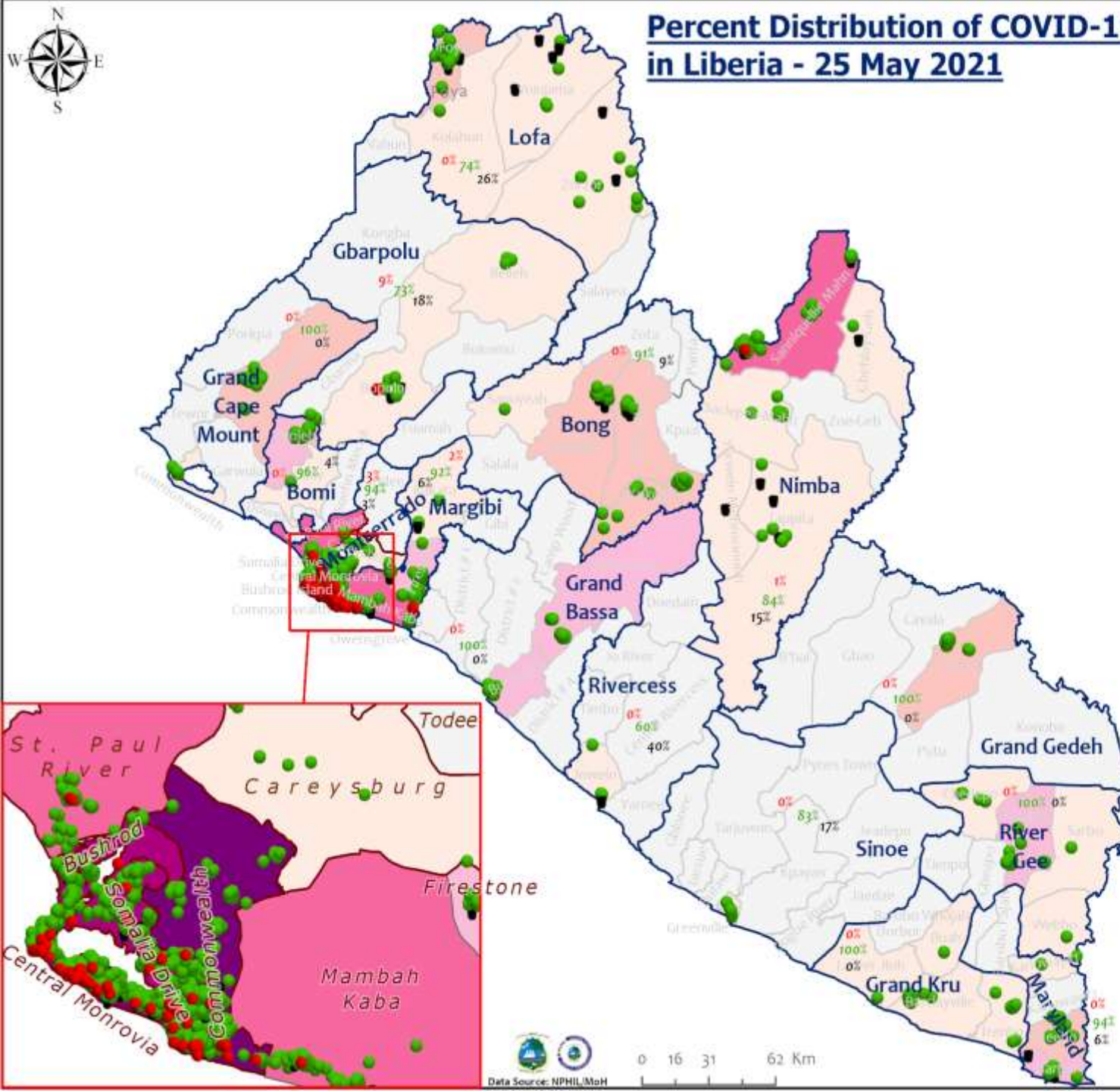
### Case Status

- Active
- Recovered
- Dead

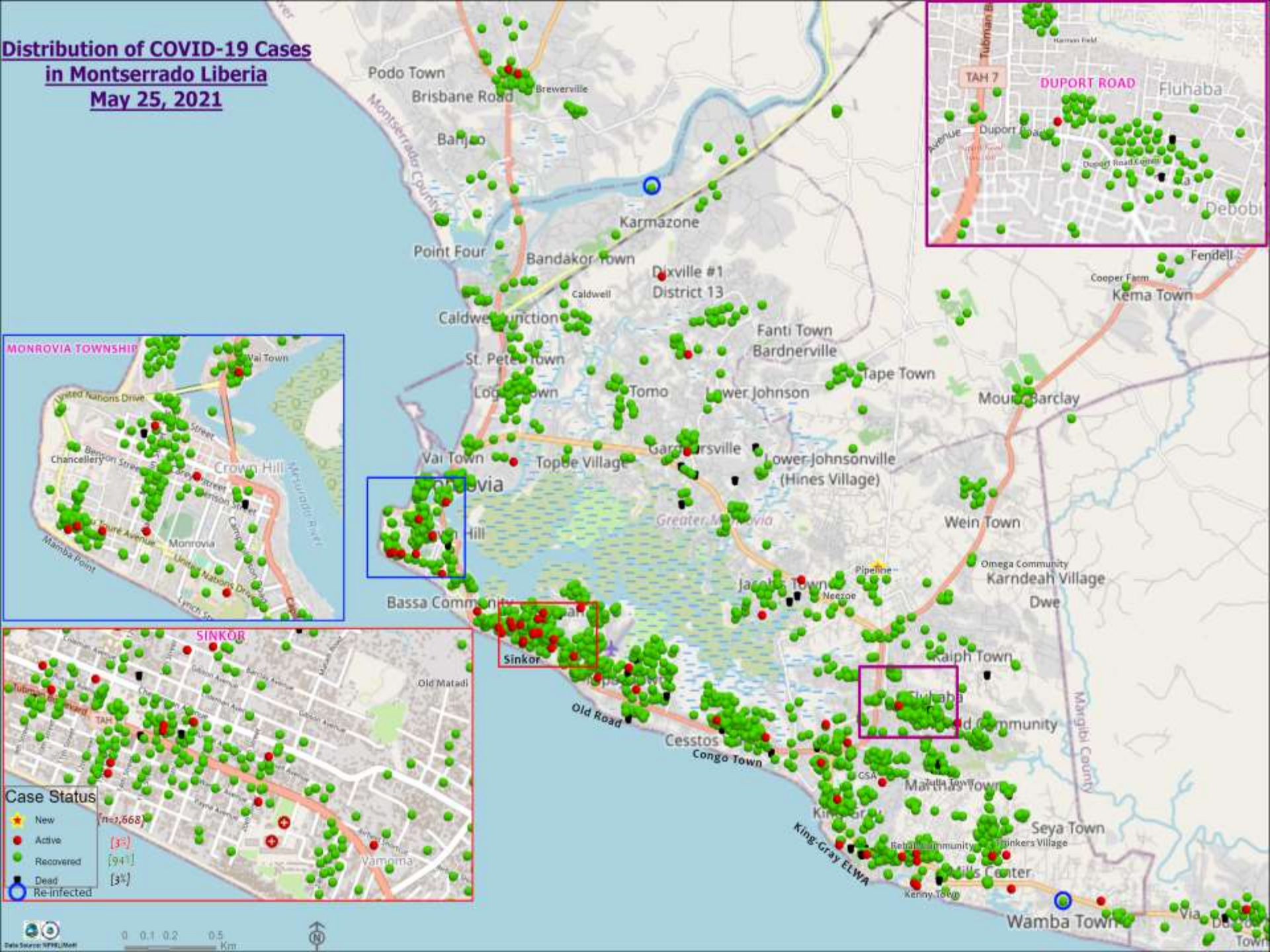
### Cases / District

- 0
- 1-10
- 11-20
- 21-50
- 51-100
- 101-200
- 201-600

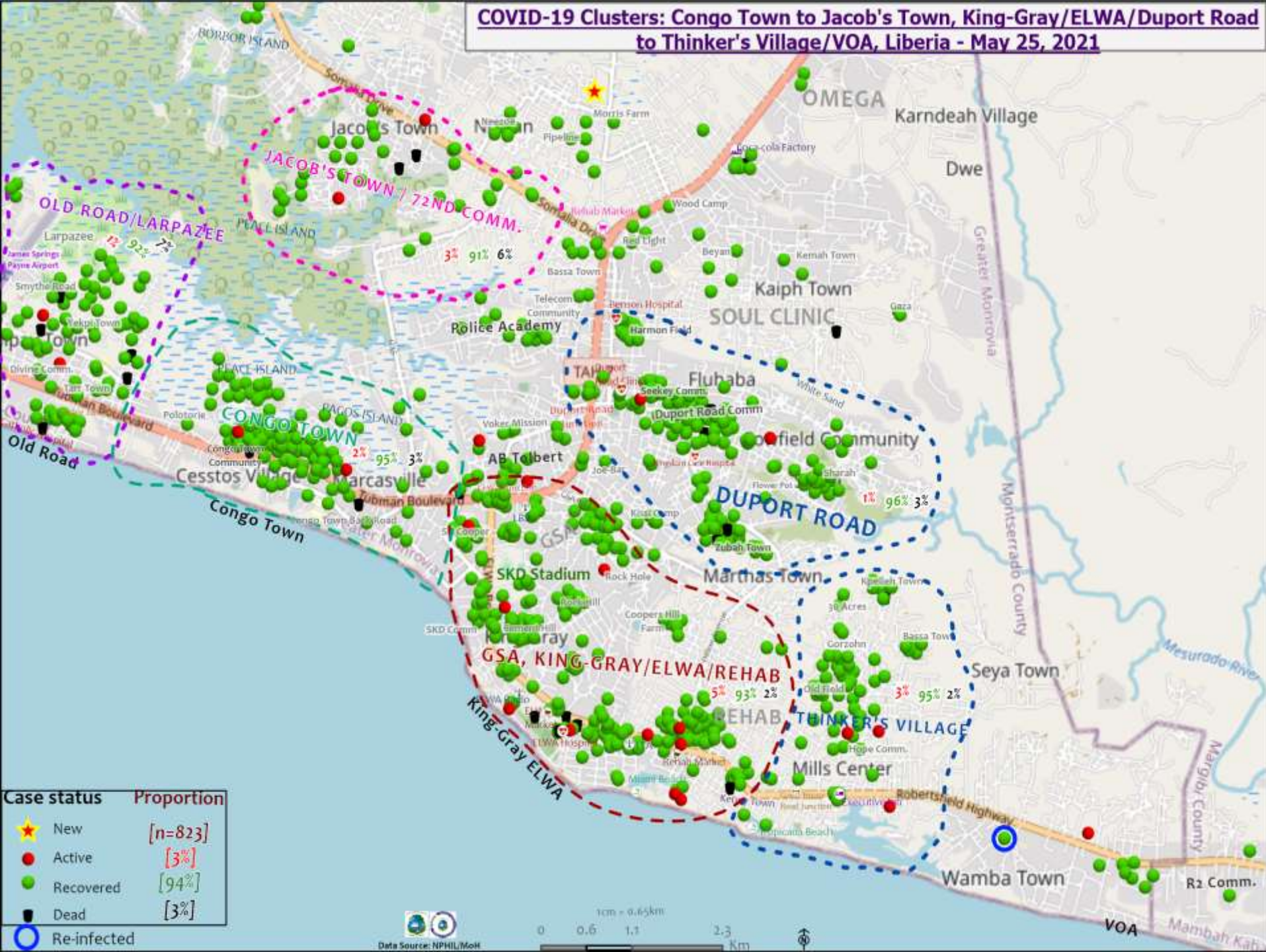
[3%]  
[93%]  
[4%]



# Distribution of COVID-19 Cases in Montserrat Liberia May 25, 2021



# COVID-19 Clusters: Congo Town to Jacob's Town, King-Gray/ELWA/Duport Road to Thinker's Village/VOA, Liberia - May 25, 2021



# Summary of confirmed, recovered, active, and dead cases by reporting counties, Liberia, 16 March 2020 – 24 May 2021

County	Confirmed Cases		Recovered Cases		Active Cases	Dead Cases	
	New	Cum	New	Cum		New	Cum
Bomi	0	23	0	22	0	0	1
Bong	0	54	0	49	0	0	5
Gbarpolu	0	11	0	8	1	0	2
Grand Bassa	0	60	0	60	0	0	0
Grand Cape Mount	0	20	0	20	0	0	0
Grand Gedeh	0	16	0	16	0	0	0
Grand Kru	0	18	0	18	0	0	0
Lofa	0	45	0	34	0	0	11
Margibi	0	105	0	97	2	0	6
Maryland	0	34	0	32	0	0	2
Montserrado	1	1668	0	1572	51	0	45
Nimba	0	73	0	61	1	0	11
Rivercess	0	5	0	3	0	0	2
River Gee	0	36	0	36	0	0	0
Sinoe	0	6	0	5	0	0	1
<b>National</b>	<b>1</b>	<b>2174</b>	<b>0</b>	<b>2033</b>	<b>55</b>	<b>0</b>	<b>86</b>

## Daily Summary Report at Treatment Units – 25 May 2021

Treatment Facility Name	New Admissions	Cumulative Admission	Daily Discharges	Cumulative Recoveries	Daily Deaths	Cumulative Deaths	Currently in treatment
Bomi LGH Treatment Unit	0	18	0	18	0	0	0
Bong Treatment Unit	0	26	0	26	0	0	0
Chief Jallahlone Hospital Treatment Unit	0	1	0	1	0	0	0
Grand Bassa Arcelor Mittal Treatment Unit	0	6	0	6	0	0	0
Grand Bassa LGH Treatment Unit	0	3	0	3	0	0	0
LAC Treatment Unit	0	42	0	42	0	0	0
Starbase Treatment Unit	0	648	0	637	0	9	3
Union Treatment Center	0	78	0	78	0	0	0
Duside Hospital Treatment Unit	0	42	0	40	0	2	0
Martha Tubman Hospital Treatment Unit	0	13	0	13	0	0	0
Rally Time Treatment Unit	0	4	0	4	0	0	0
Sasstown Treatment Unit	0	7	0	7	0	0	0
Behwan Treatment Unit	0	7	0	7	0	0	0
FJ Grante Hospital Treatment Unit	0	5	0	5	0	0	0
JJ Dossen Hospital Treatment Unit	0	9	0	9	0	0	0
Pleebo Health Center Treatment Unit	0	21	0	21	0	0	0
Tellewoyan Memorial Hospital Treatment Unit	0	13	0	13	0	0	0
Foya Borma Hospital Treatment Unit	0	12	0	12	0	0	0
Zorzor Treatment Unit	0	6	0	6	0	0	0
Robert Sport Treatment Unit	0	1	0	1	0	0	0
Ganta United Methodist Hospital Treatment Unit	0	1	0	1	0	0	0
Arcelor Mittal Yekepa Treatment Unit	0	12	0	12	0	0	0
Jackson F. Doe Treatment Unit	0	5	0	4	0	1	0
St. Frances Hospital Treatment Unit	0	2	0	2	0	0	0
Fish Town Hospital Treatment Unit	0	36	0	36	0	0	0
E&J Medical Center Treatment Unit	0	20	0	19	0	1	0
<b>TOTAL</b>	<b>0</b>	<b>1038</b>	<b>0</b>	<b>1023</b>	<b>0</b>	<b>13</b>	<b>3</b>

3 of the 5 persons admitted at Starbase tested negative for Covid-19 but are contacts of the positive cases

# Home-Base Care of COVID-19 Cases

County	New Admissions	Currently in Admissions	No. Followed-up (In-person/Phone)	Cumulative Admissions	New Recoveries	Cumulative Recoveries	Referrals to TU	Cumulative Referrals to TU	New Death	Cumulative Deaths
Montserrado	0	15	13	262	5	239	0	8	0	0
Gbarpolu				0						
Margibi				0						
Nimba				0						
<b>Total:</b>	0	15	13	262	5	239	0	8	0	0

# Laboratory Samples Evaluated – 25 May 2021

County	Sample Evaluated	New Positive	Repeat Positive	Initial Negative	Repeat Test Negative	Pending Lab Result
Bong	3	0	0	3	0	0
Grand Bassa	6	0	0	6	0	0
Margibi	7	0	0	6	0	1
Maryland	1	0	0	1	0	0
Montserrado	2586	1	0	245	0	10
Nimba	1	0	0	1	0	0
<b>TOTAL</b>	<b>274</b>	<b>1</b>	<b>0</b>	<b>262</b>	<b>0</b>	<b>11</b>
Outgoing Traveler	253	1	0	241	0	11
Incoming Traveler	0	0	0	0	0	0
Voluntary	21	0	0	21	0	0
AFI Study	0	0	0	0	0	0
NRL	273	1	0	261	0	11
UN Clinic Lab	1	0	0	1	0	0

# Incoming Travelers Testing Positive for COVID-19 (May 2021)

Country of embarkment	Cases
Ghana	10
UAE	5
USA	3
Australia	1
Pakistan	1
Nigeria	1
Lebanon	1
Canada	1
India	1
Others	7
<b>Total</b>	<b>31</b>

Occupation	Cases
Business	7
Student	5
PFM Consultant	1
Physician	1
Diplomat	1
Nurse Aide	1
Retired	1
Geologist	1
Others	13
<b>Total</b>	<b>31</b>

Nationality	Cases
Liberian	11
American	4
Ghanaian	4
Indian	2
Pakistani	1
Nigerian	1
Lebanese	1
Canadian	1
Australian	1
Others	5
<b>Total</b>	<b>31</b>

Flight	Cases
Kenya Airways	13
ASKY	9
SN Brussels	4
Air France	2
AWA	1
N/A	2
<b>Total</b>	<b>31</b>

# Summary of COVID-19 Contact Tracing in Response Counties

County	New Contacts Line listed	Cumulative Contacts	No. of Health Care Workers as Contacts	Cumulative no. of Health Care Workers as contacts	Contacts became a case	Cumulative contacts that became a case	Contacts Completed 14 Days	Cumulative Contacts Completing 14 Days	Contacts Under Follow-up	Contacts lost to Follow-up
Montserratado	0	5603	0	512	0	189	0	5497	42	3
Margibi	0	480	0	125	0	42	0	470	6	0
Grand Bassa	0	457	0	140	0	51	0	410	0	0
Sinoe	0	191	0	30	0	1	0	191	0	0
Lofa	0	758	0	103	0	34	0	726	0	0
Nimba	0	613	0	53	0	25	0	550	0	0
Bong	0	302	0	70	0	28	0	300	0	0
Gbarpolu	0	87	0	13	0	8	0	87	0	0
Grand Cape Mount	0	49	0	3	0	4	0	51	0	0
RiverGee	0	123	0	13	0	30	0	123	0	0
Maryland	0	208	0	28	0	19	0	136	0	0
Bomi	0	180	0	17	0	15	0	177	0	0
Rivercess	0	102	0	55	0	0	0	88	0	0
Grand Kru	0	333	0	131	0	17	0	330	0	0
Grand Gedeh	0	163	0	49	0	6	0	125	0	0
National	0	9649	0	1342	0	469	0	9261	48	3

**Thank you for Listening**