



Liberia COVID-19 Daily Sitrep 342 (20th February 2021)

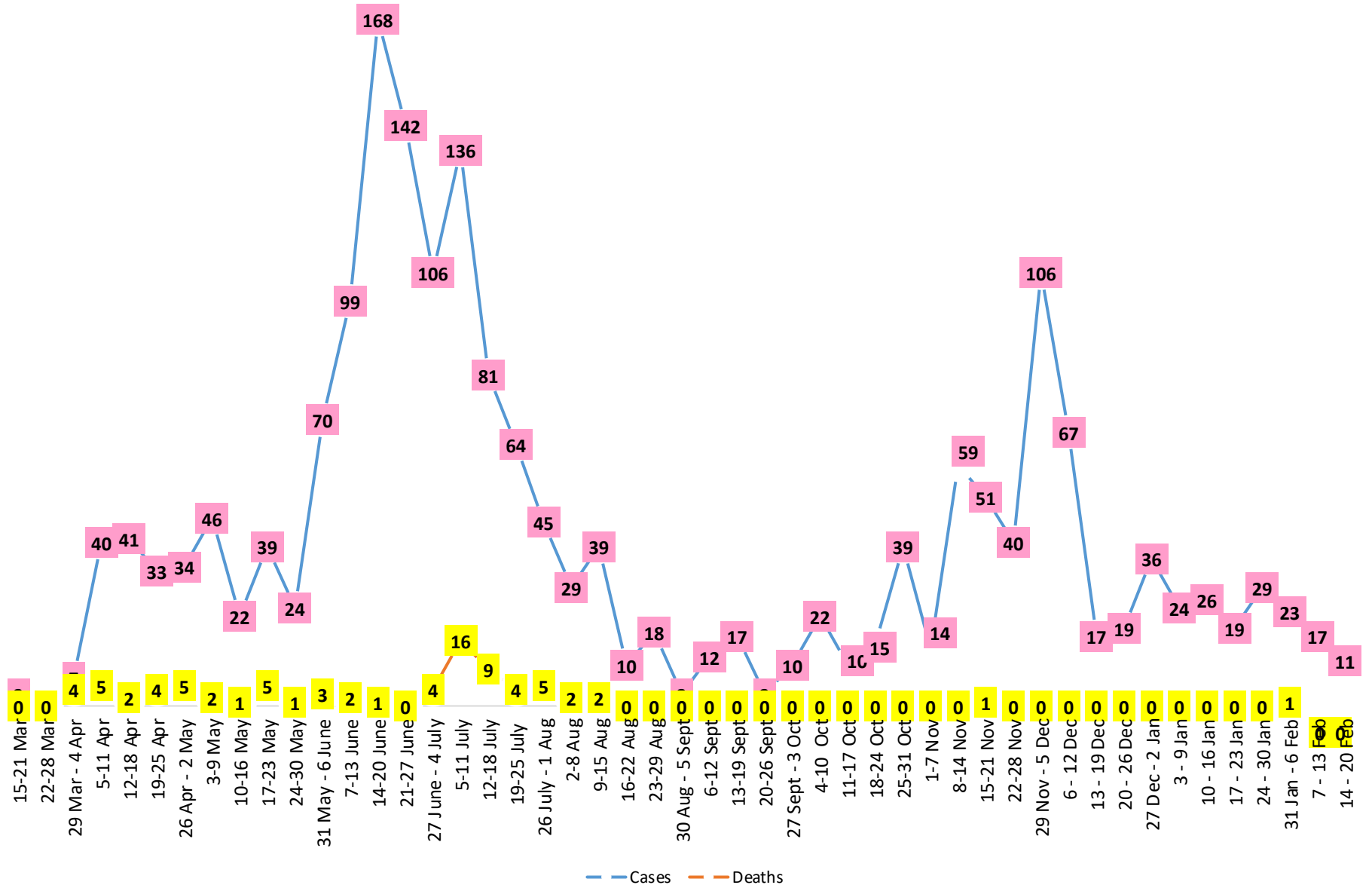
Summary of COVID-19 Cases by Reporting County, Liberia, 16 March 2020 – 20 February 2021

County	Laboratory Confirmed Cases	Confirmed Cases on Contact List	Confirmed Cumulative Cases
Bomi	0	0	23
Bong	0	0	48
Gbarpolu	0	0	10
Grand Bassa	0	0	59
Grand Cape Mount	0	0	16
Grand Kru	0	0	18
Grand Gedeh	0	0	16
Lofa	0	0	45
Margibi	0	0	96
Maryland	0	0	33
Montserrado	7	0	1513
Nimba	0	0	71
Rivercess	0	0	5
River Gee	0	0	36
Sinoe	0	0	6
NATIONAL	7	0	1995

Demographic Breakdown (Gender & Age) of Confirmed COVID-19 Cases (16 March 2020 – 20 February 2021)

County	<15 years		15 - 34		35 - 54		55+		All ages		Total Confirmed
	M	F	M	F	M	F	M	F	M	F	
Bomi	2	2	3	5	7	3	0	1	12	11	23
Bong	3	1	3	6	15	9	8	3	29	19	48
Gbarpolu	1	2	0	2	3	1	1	0	5	5	10
Grand Bassa	11	2	9	11	13	8	3	2	36	23	59
Grand Cape Mount	0	0	9	0	6	0	1	0	16	0	16
Grand Kru	0	0	2	5	4	5	2	0	8	10	18
Grand Gedeh	0	1	1	2	7	3	2	0	10	6	16
Lofa	3	3	8	3	13	5	8	2	32	13	45
Margibi	6	4	14	12	26	12	14	8	60	36	96
Maryland	2	0	9	6	9	4	1	2	21	12	33
Montserrado	51	48	360	210	425	187	163	69	999	514	1513
Nimba	1	4	15	10	27	6	5	3	48	23	71
Rivercess	0	0	2	3	0	0	0	0	2	3	5
River Gee	0	0	4	3	19	5	5	0	28	8	36
Sinoe	0	0	1	0	4	1	0	0	5	1	6
National	80	67	440	278	578	249	213	90	1311	684	1995

COVID-19 WEEKLY EPI-CURVE



Summary of COVID-19 Deaths by Reporting County, Liberia, 16 March 2020 – 20 February 2021

County	ew Suspected Deaths	COVID-19 Treatment Unit	Total in COVID-19 Treatment Unit	Health Facility	Total in Health Facility	Community	Total in Community	onfirmed Deaths on Contact List	Cumulative Deaths
Bomi	0	0	0	0	1	0	0	0	1
Bong	0	0	0	0	4	0	1	0	5
Gbarpolu	0	0	0	0	2	0	0	0	2
Grand Bassa	0	0	0	0	0	0	0	0	0
Grand Cape Mount	0	0	0	0	0	0	0	0	0
Grand Gedeh	0	0	0	0	0	0	0	0	0
Grand Kru	0	0	0	0	0	0	0	0	0
Lofa	0	0	0	0	6	0	5	0	11
Maryland	0	0	0	0	2	0	0	0	2
Margibi	0	0	2	0	4	0	0	0	6
Montserrado	0	0	9	0	19	0	16	0	43
Nimba	0	0	2	0	5	0	4	0	11
Rivercess	0	0	0	0	1	0	1	0	2
River Gee	0	0	0	0	0	0	0	0	0
Sinoe	0	0	0	0	1	0	0	0	1
National	0	0	13	0	45	0	27	0	85

The Liberia Case Fatality rate (CFR) officially considered is for deaths that occurred among patients in care at the COVID-19 treatment units across the country. As of 30 December 2020 , a total of 13 deaths have been recorded CFR=1.3%. The country is however keeping active surveillance on community deaths and deaths in non COVID-19 treatment health units.

Daily and Cumulative Healthcare Worker (HCW) COVID-19 Cases and Deaths by County, Liberia, 16 March 2020 – 20 February 2021

County	DAILY REPORT						CUMULATIVE CASES (ALIVE & DEAD)	
	New Suspected & High Risk Cases (Alive)			New Suspect Death	Laboratory Confirmed Cases	Confirmed Cases on Contact List	Confirmed	Deaths
	Suspect	High Risk	Total					
Bomi	0	0	0	0	0	0	5	0
Bong	0	0	0	0	0	0	19	3
Gbarpolu	0	0	0	0	0	0	1	0
Grand Bassa	0	0	0	0	0	0	21	0
Grand Gedeh	0	0	0	0	0	0	2	0
Grand Kru	0	0	0	0	0	0	14	0
Lofa	0	0	0	0	0	0	16	0
Margibi	0	0	0	0	0	0	12	1
Maryland	0	0	0	0	0	0	16	0
Montserrado	0	0	0	0	0	0	88	1
Nimba	0	0	0	0	0	0	14	0
Rivercess	0	0	0	0	0	0	3	0
River Gee	0	0	0	0	0	0	10	0
Sinoe	0	0	0	0	0	0	3	0
NATIONAL	0	0	0	0	0	0	224	5

Cadre Cases and Deaths by Health Care Workers (16 March 2020 – 20 February 2021)

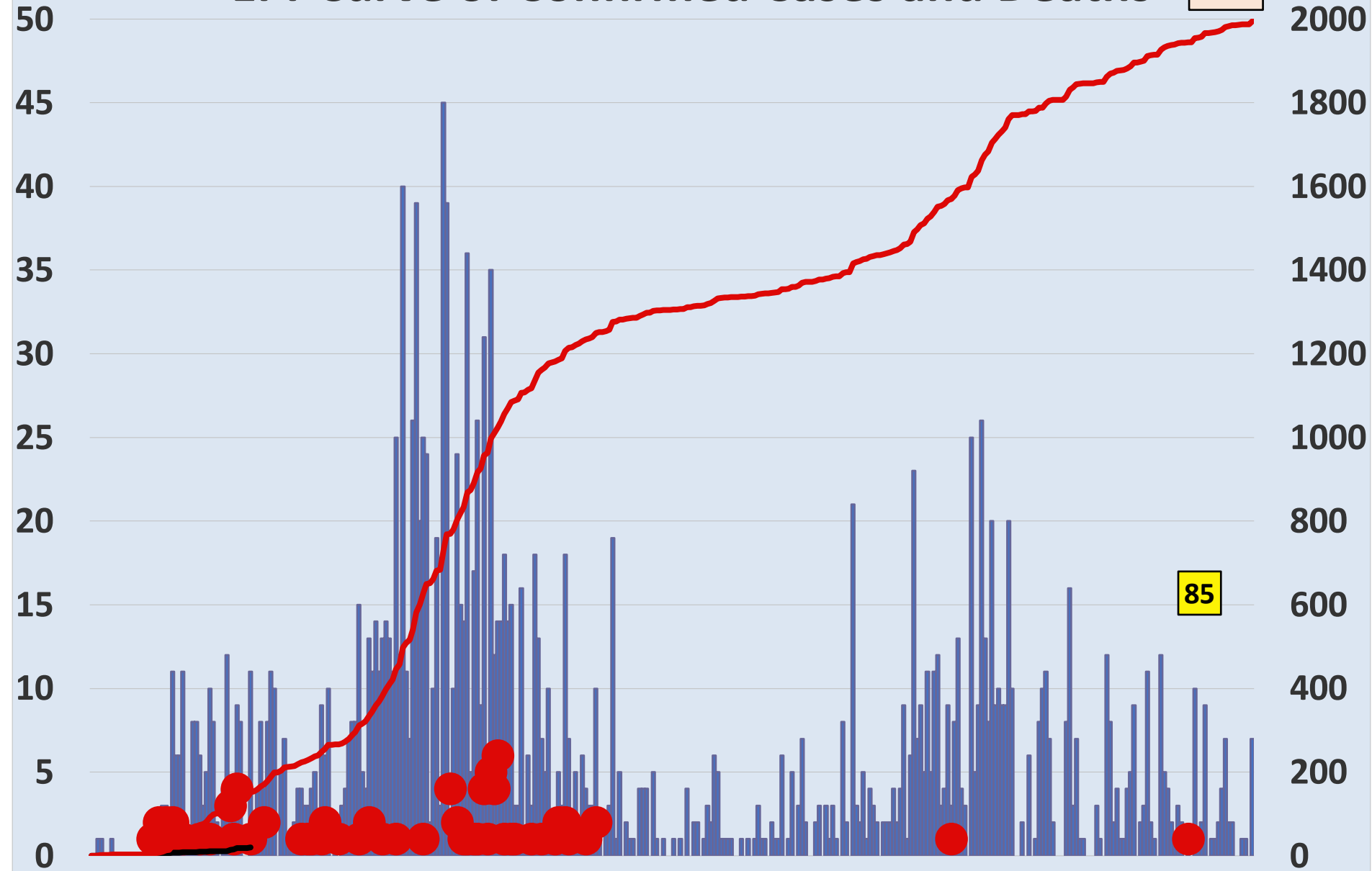
Health Care Worker Cadre	Montserratado		Margibi		Nimba		River Gee		Sinoe		Grand Kru		Gbarpolu		Bong		Lofa		Grand Bassa		Maryland		Bomi		Rivercess		Grand Gedeh		National (Total)	
	Cases	Deaths	Cases	Deaths	Cases	Deaths	Cases	Deaths	Cases	Deaths	Cases	Deaths	Cases	Deaths	Cases	Deaths	Cases	Deaths	Cases	Deaths	Cases	Deaths	Cases	Deaths	Cases	Deaths	Cases	Deaths	Cases	Deaths
Doctors	17	0	1	0	0	0	1	0	0	0	0	0	0	0	1	0	0	0	1	0	0	0	0	0	0	0	0	21	0	
Pharmacists	4	0	0	0	0	0	0	0	0	0	0	0	0	0	0	0	0	0	0	0	0	0	0	0	0	0	0	4	0	
Nurses	23	1	2	0	2	0	5	0	0	0	2	0	1	1	12	1	8	0	5	0	1	0	1	0	0	0	0	62	3	
Nurse Aid	0	0	0	0	2	0	0	0	0	0	4	0	0	0	0	0	0	8	0	2	0	0	0	0	0	0	0	16	0	
Midwife	0	0	0	0	0	0	1	0	0	0	1	0	0	0	1	0	1	0	1	0	0	0	0	0	0	0	0	5	0	
Physician Assistants	8	0	1	0	1	0	1	0	0	0	1	0	0	0	0	0	1	0	1	0	0	0	0	0	0	0	0	14	0	
Lab Technician	9	0	1	0	2	0	0	0	1	0	1	0	0	0	0	0	2	0	0	0	10	0	0	0	3	0	0	29	0	
Environmental Health Technicians	5	0	0	0	0	0	0	0	0	0	0	0	0	0	0	0	0	0	0	0	0	0	0	0	0	0	0	5	0	
Dieticians	0	0	7	1	0	0	0	0	0	0	0	0	0	0	0	0	0	0	0	0	0	0	0	0	0	0	0	7	1	
Hospital Cleaner	1	0	0	0	0	0	0	0	0	0	1	0	0	0	1	0	0	0	1	0	2	0	0	0	0	0	0	6	0	
Others*	21	0	0	0	7	0	2	0	2	0	4	0	0	0	4	1	4	0	4	0	1	0	4	0	0	2	0	55	1	
Total:	88	1	12	1	14	0	10	0	3	0	14	0	1	1	19	2	16	0	21	0	16	0	5	0	3	0	2	0	224	5

***Others include the following:**

Radiologist, Microbiologist, Epidemiologist, Dispenser, Licensed Practical Nurse, Psychosocial worker, Hygienist, Logistician, Vaccinator, Ambulance Driver, Procurement Officer, Registrar, Accountant, Secretary, Hospital Administrator, Community Health Volunteer, GIS Specialist, EOC Coordinator

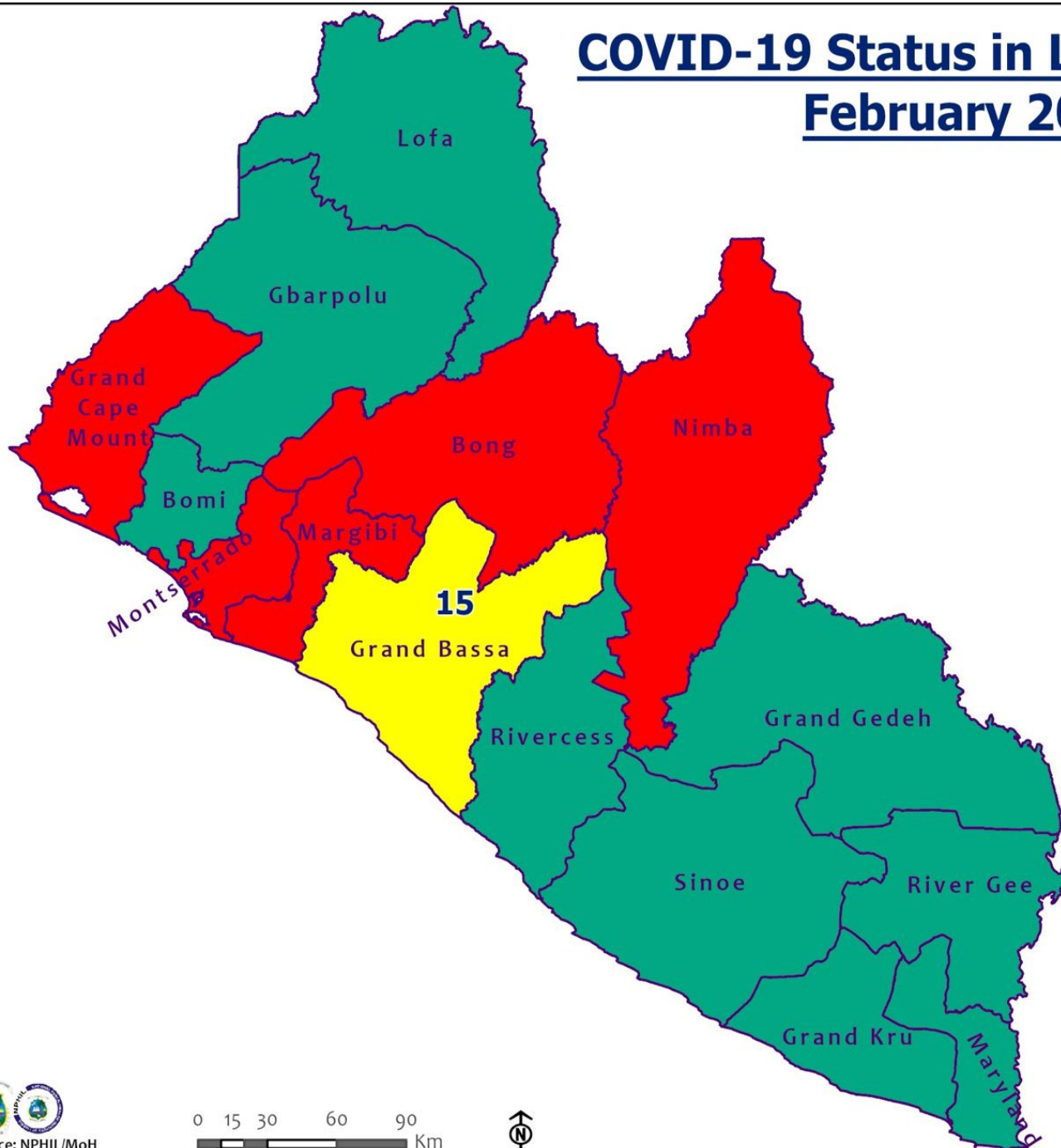
EPI-Curve of Confirmed Cases and Deaths

1995



■ Daily Cases
● Daily Deaths

COVID-19 Status in Liberia by County February 20, 2021



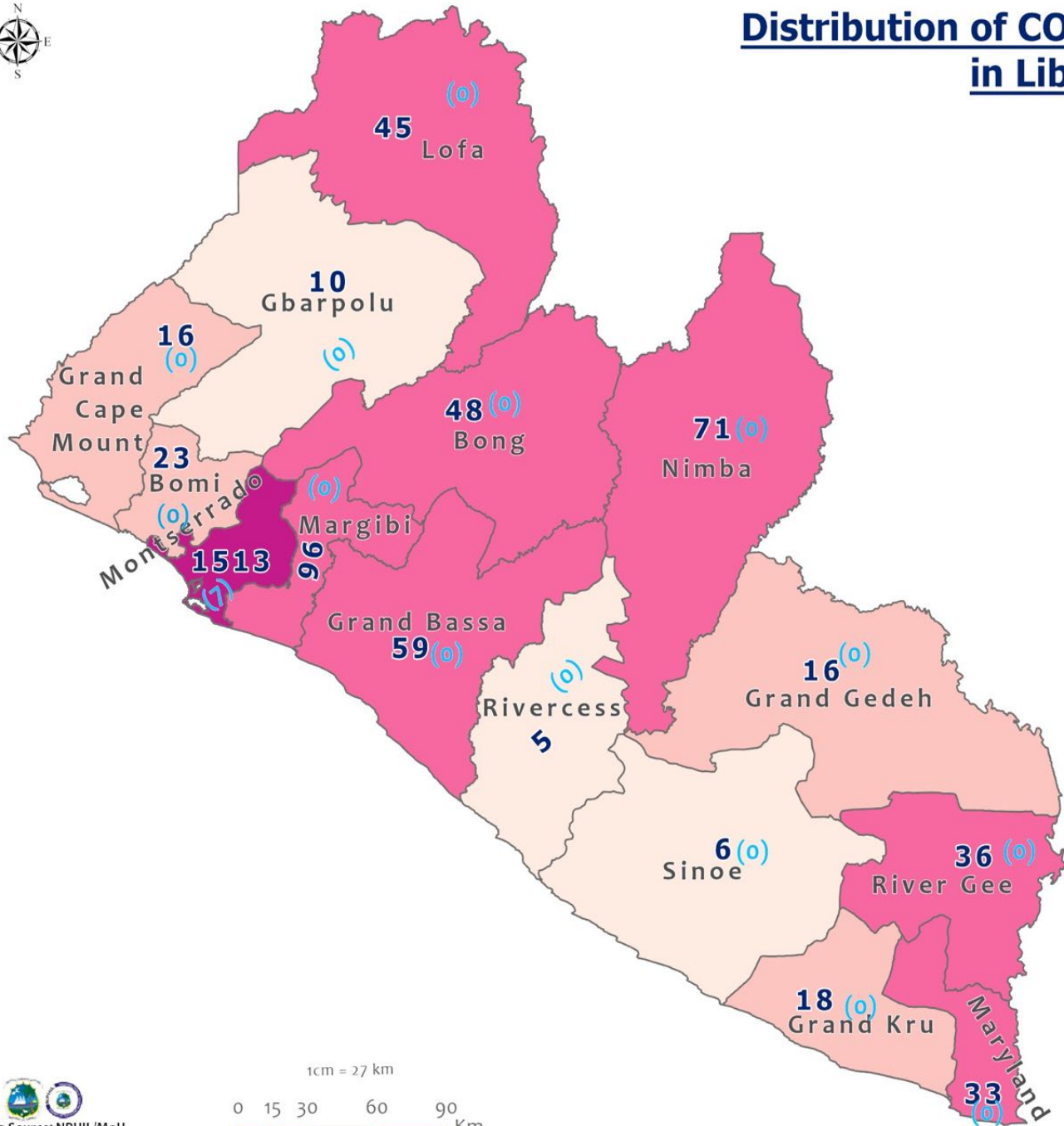
Legend

County Status

- Preparedness
- 28-Day Countdown
- Response



Distribution of COVID-19 Cases by County in Liberia - February 20, 2021



Total cumulative cases:

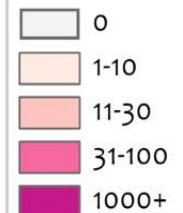
1995

Total new cases:

7

Legend

Number of Cases



Cumulative cases

New cases

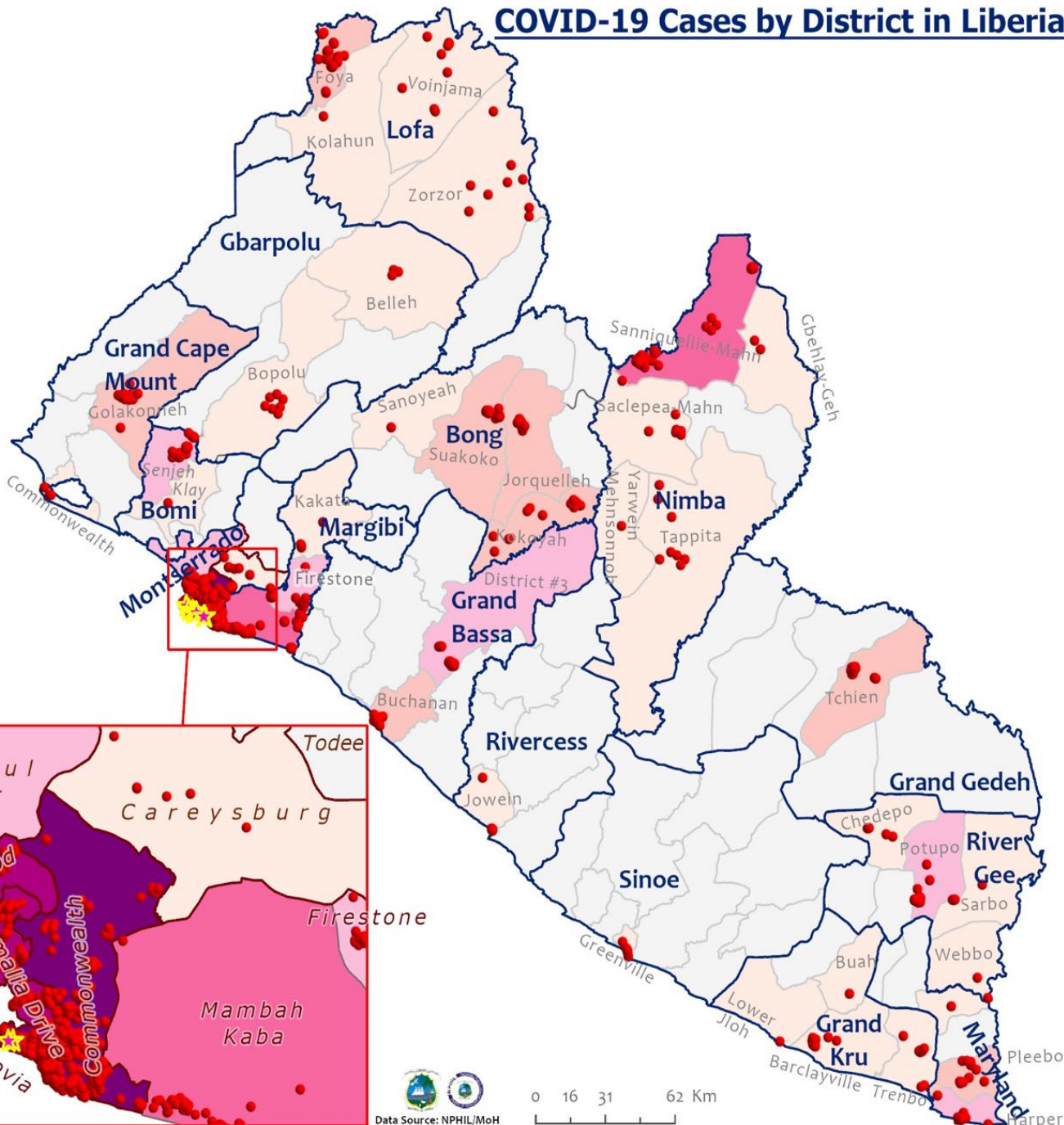
0 (0)

1cm = 27 km

0 15 30 60 90 Km



COVID-19 Cases by District in Liberia - February 20, 2021



Total Cases: 1995

Affected Counties	Cumulative Cases
Montserrado	1513
Margibi	96
Nimba	71
Grand Bassa	59
Bong	48
Lofa	45
River Gee	36
Maryland	33
Bomi	23
Grand Kru	18
Grand Gedeh	16
Grand Cape	16
Gbarpolu	10
Sinoe	6
Rivercess	5

Legend

Case Status

- ★ New confirmed case
- Confirmed cases

Cases / District

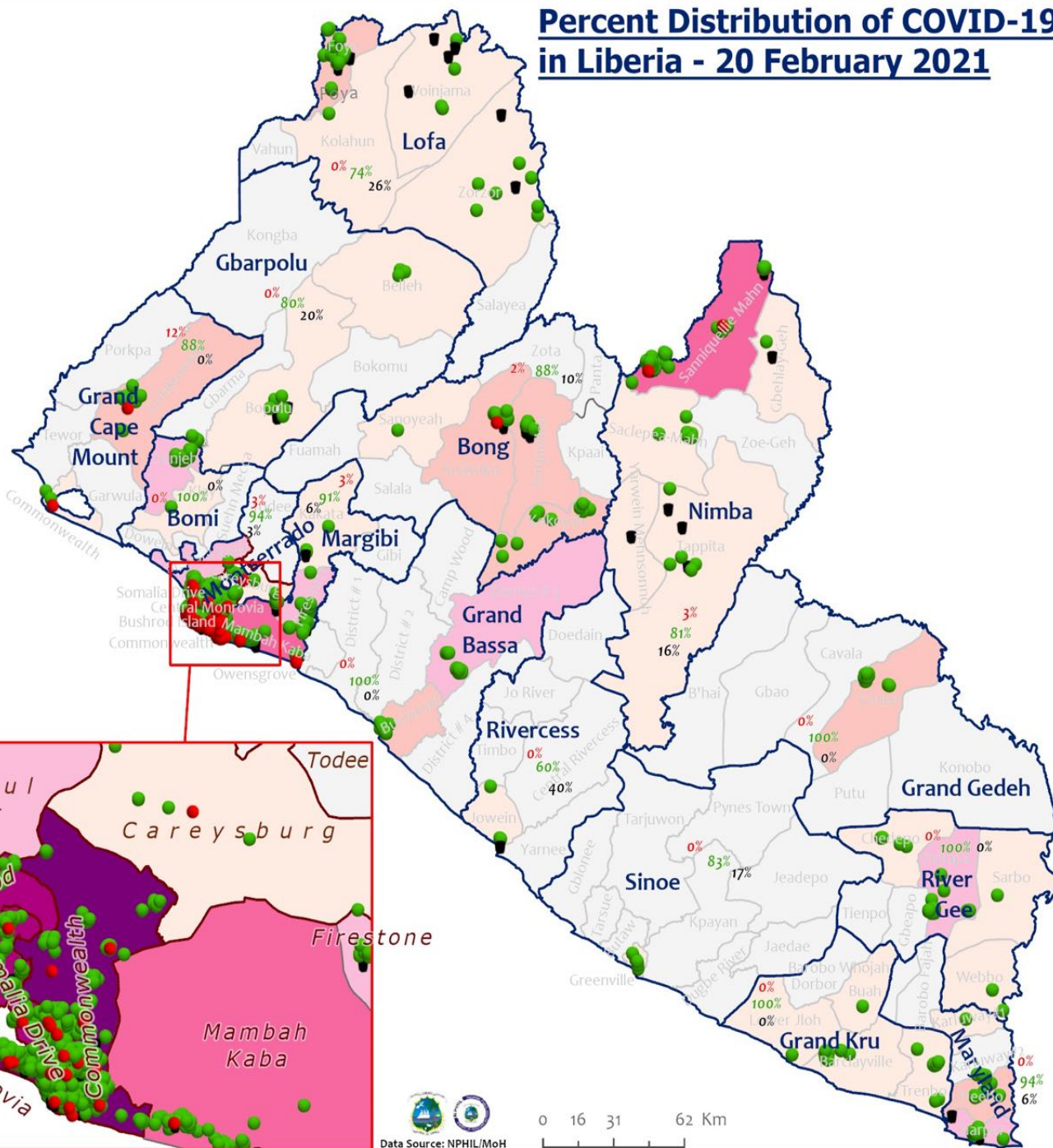
- 0
- 1-10
- 11-20
- 21-50
- 51-100
- 101-200
- 201-600



0 16 31 62 Km

Data Source: NPHIL/MoH

Percent Distribution of COVID-19 Cases by Status in Liberia - 20 February 2021



Total Cases: 1995

Affected Counties	Cumulative Cases
Montserrado	1513
Margibi	96
Nimba	71
Grand Bassa	59
Bong	48
Lofa	45
River Gee	36
Maryland	33
Boni	23
Grand Kru	18
Grand Gedeh	16
Grand Cape	16
Mount	16
Gbarpolu	10
Sinoe	6
Rivercess	5

Legend

Case Status

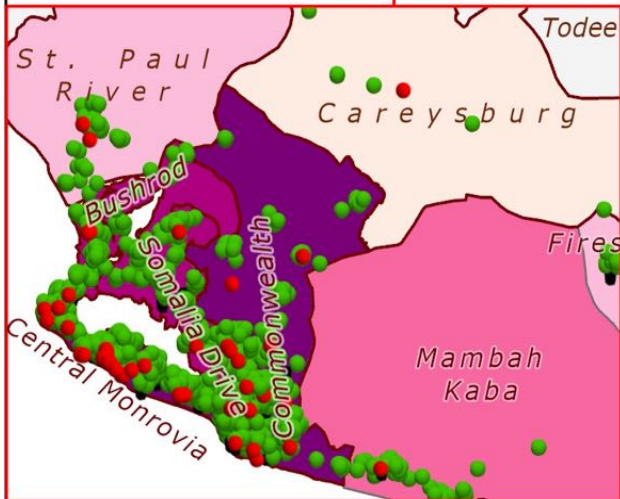
- Active
- Recovered
- Dead

Cases / District

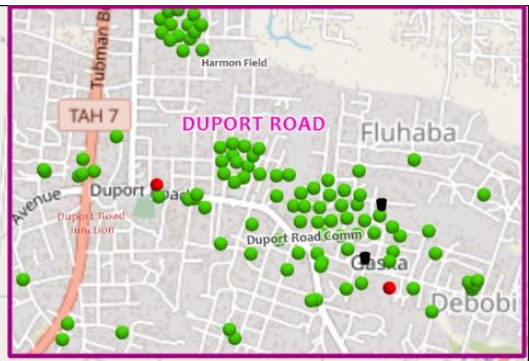
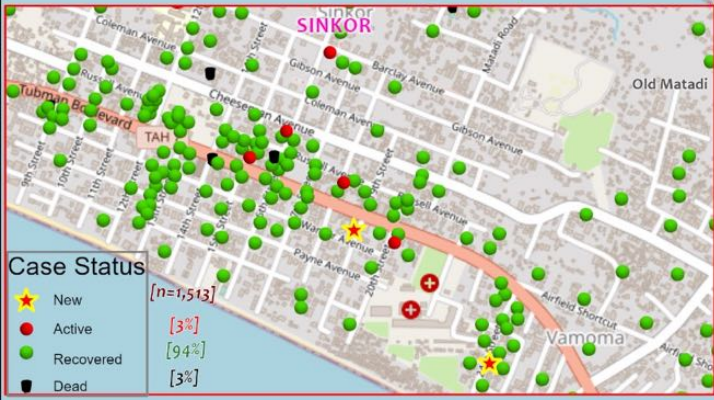
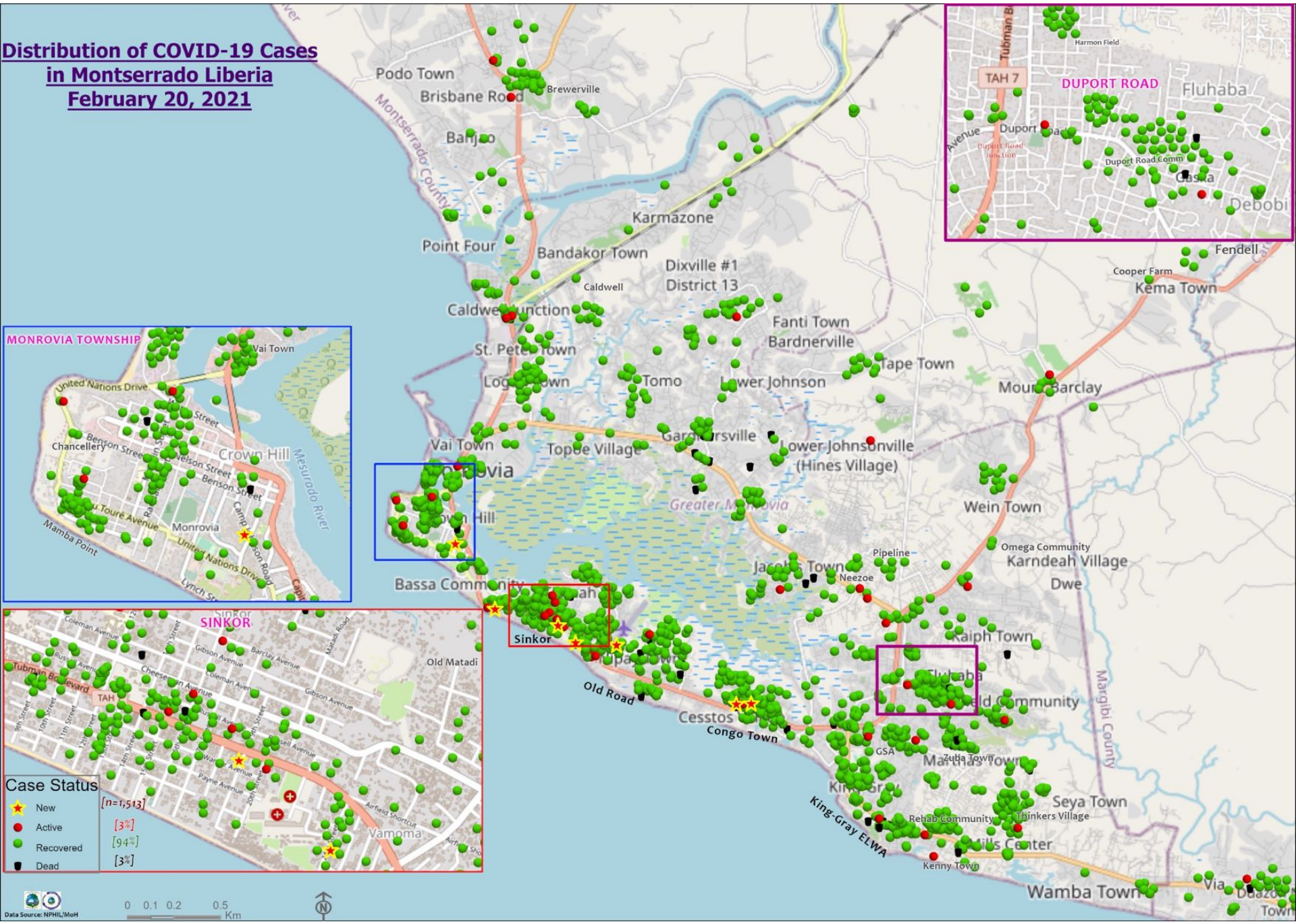
- 0
- 1-10
- 11-20
- 21-50
- 51-100
- 101-200
- 201-600

Inset Legend:

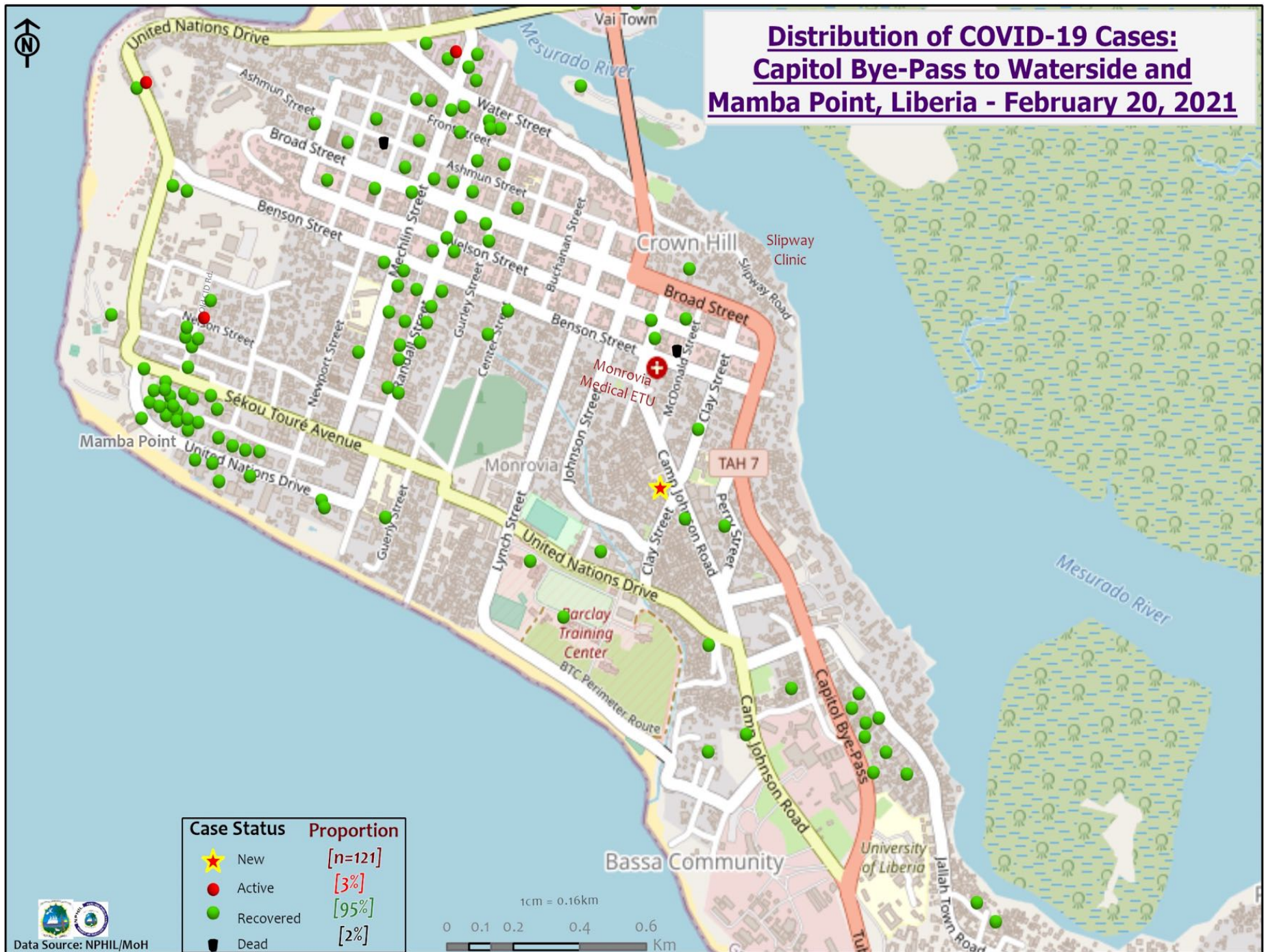
- [3%] Active
- [93%] Recovered
- [4%] Dead



Distribution of COVID-19 Cases in Montserratado Liberia February 20, 2021

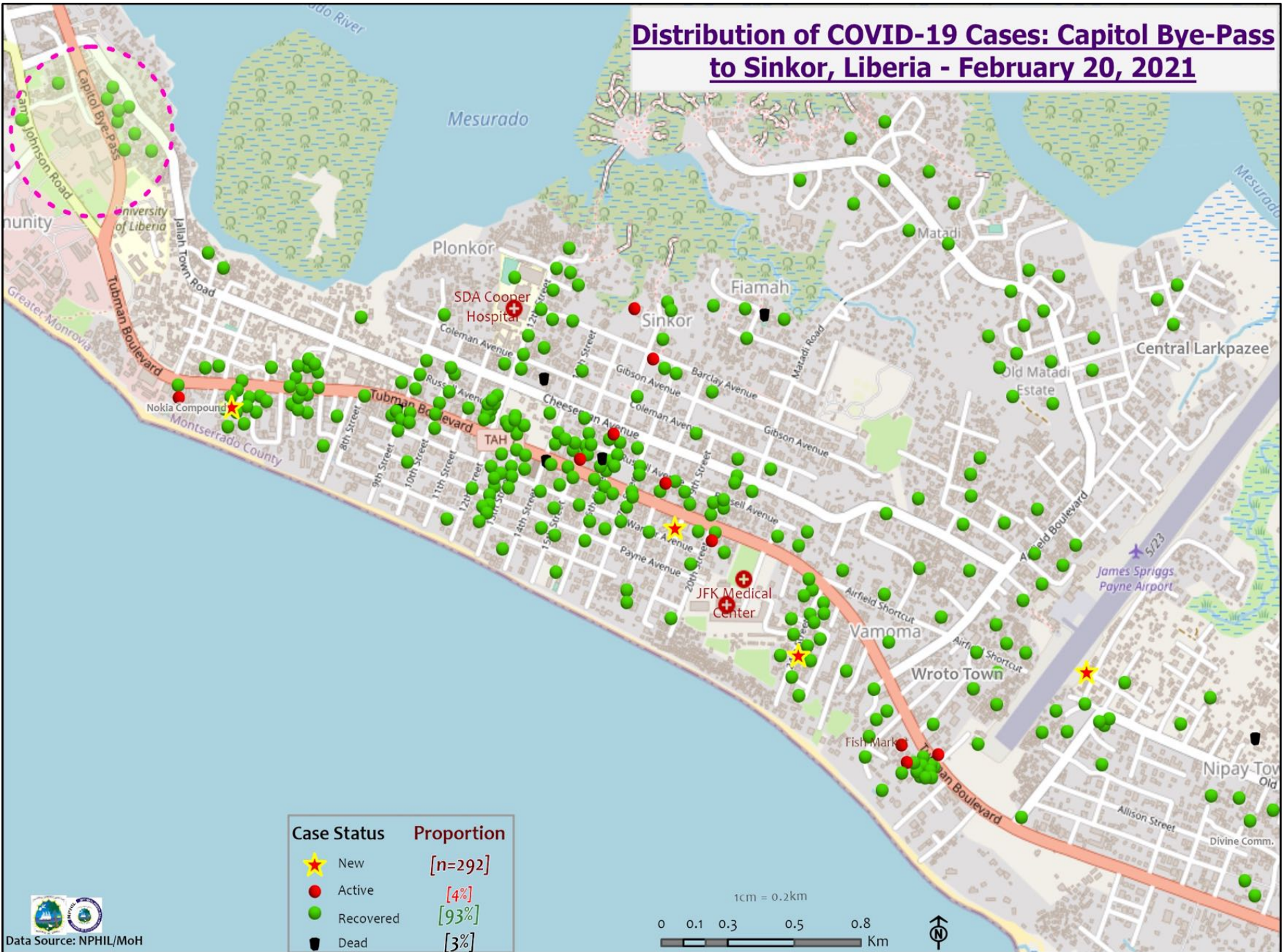


Distribution of COVID-19 Cases: Capitol Bye-Pass to Waterside and Mamba Point, Liberia - February 20, 2021

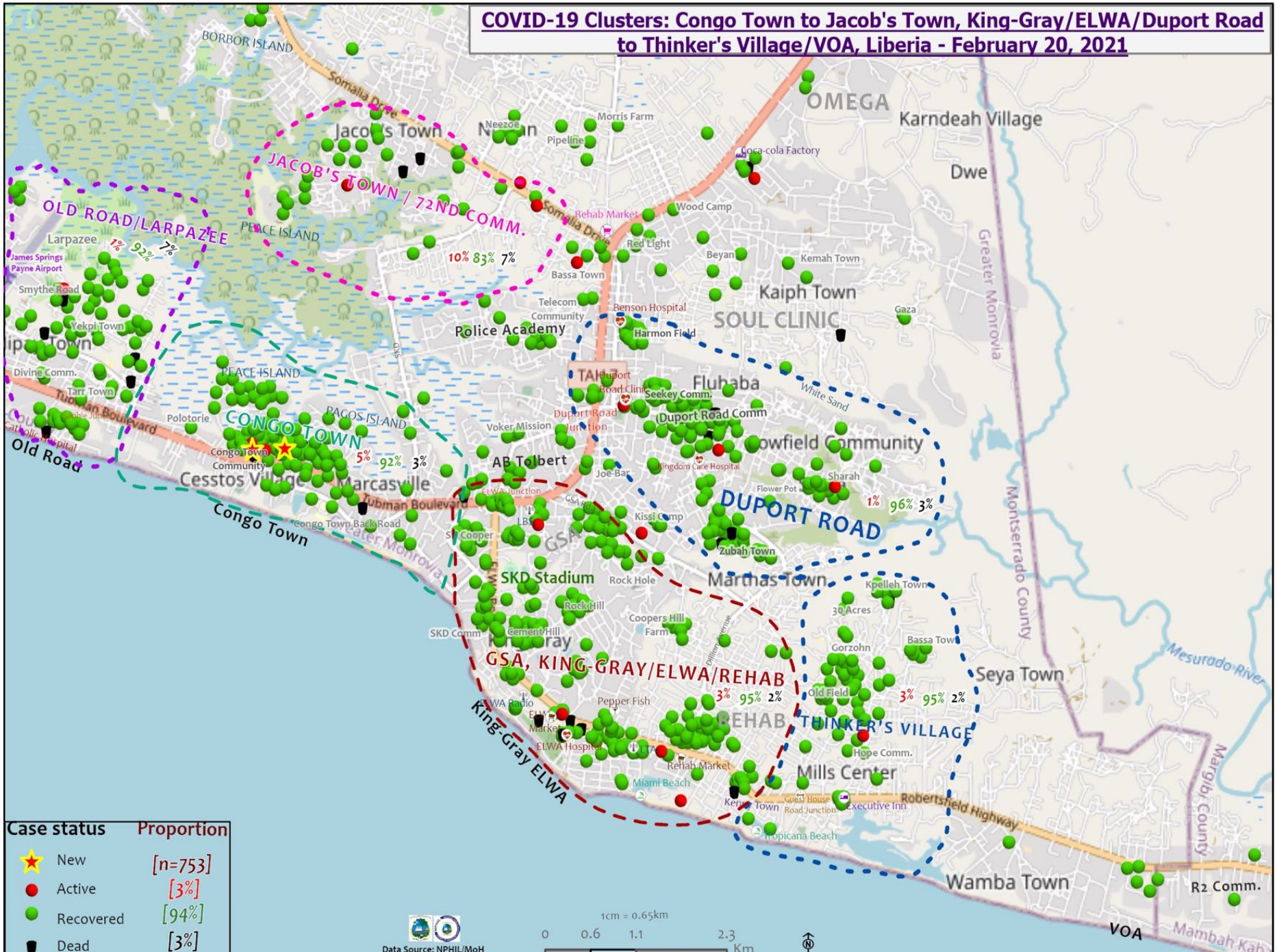


Case Status	Proportion
★ New	[n=121]
● Active	[3%]
● Recovered	[95%]
● Dead	[2%]

Distribution of COVID-19 Cases: Capitol Bye-Pass to Sinkor, Liberia - February 20, 2021



COVID-19 Clusters: Congo Town to Jacob's Town, King-Gray/ELWA/Duport Road to Thinker's Village/VOA, Liberia - February 20, 2021



Case status	Proportion
★ New	[n=753]
● Active	[3%]
● Recovered	[94%]
■ Dead	[3%]

Summary of confirmed, recovered, active, and dead cases by reporting counties, Liberia, 16 March 2020 – 20 February 2021

County	Confirmed Cases		Recovered Cases		Active Cases	Dead Cases	
	New	Cum	New	Cum		New	Cum
Bomi	0	23	0	22	0	0	1
Bong	0	48	0	41	1	0	5
Gbarpolu	0	10	0	8	0	0	2
Grand Bassa	0	59	0	59	0	0	0
Grand Cape Mount	0	16	0	14	2	0	0
Grand Gedeh	0	16	0	16	0	0	0
Grand Kru	0	18	0	18	0	0	0
Lofa	0	45	0	34	0	0	11
Margibi	0	96	0	87	3	0	6
Maryland	0	33	0	31	0	0	2
Montserrado	7	1513	0	1424	45	0	44
Nimba	0	71	0	58	2	0	11
Rivercess	0	5	0	3	0	0	2
River Gee	0	36	0	36	0	0	0
Sinoe	0	6	0	5	0	0	1
National	7	1995	0	1856	53	0	85

Daily Summary Report at Treatment Units – 20 February 2021

Treatment Facility Name	New Admissions	Cumulative Admission	Daily Discharges	Cumulative Recoveries	Daily Deaths	Cumulative Deaths	Currently in treatment
Bomi LGH Treatment Unit	0	18	0	18	0	0	0
Bong Treatment Unit	0	26	0	26	0	0	0
Chief Jallahlone Hospital Treatment Unit	0	1	0	1	0	0	0
Grand Bassa Arcelor Mittal Treatment Unit	0	6	0	6	0	0	0
Grand Bassa LGH Treatment Unit	0	3	0	3	0	0	0
LAC Treatment Unit	0	42	0	42	0	0	0
Starbase Treatment Unit	0	643	0	634	0	9	0
Union Treatment Center	0	78	0	78	0	0	0
Duside Hospital Treatment Unit	0	42	0	40	0	2	0
Martha Tubman Hospital Treatment Unit	0	13	0	13	0	0	0
Rally Time Treatment Unit	0	4	0	4	0	0	0
Sasstown Treatment Unit	0	7	0	7	0	0	0
Behwan Treatment Unit	0	7	0	7	0	0	0
FJ Grante Hospital Treatment Unit	0	5	0	5	0	0	0
JJ Dossen Hospital Treatment Unit	0	9	0	9	0	0	0
Pleebo Health Center Treatment Unit	0	21	0	21	0	0	0
Tellewoyan Memorial Hospital Treatment Unit	0	13	0	13	0	0	0
Foya Borma Hospital Treatment Unit	0	12	0	12	0	0	0
Zorzor Treatment Unit	0	6	0	6	0	0	0
Robert Sport Treatment Unit	0	1	0	1	0	0	0
Ganta United Methodist Hospital Treatment Unit	0	1	0	1	0	0	0
Arcelor Mittal Yekepa Treatment Unit	0	12	0	12	0	0	0
Jackson F. Doe Treatment Unit	0	5	0	4	0	1	0
St. Frances Hospital Treatment Unit	0	2	0	2	0	0	0
Fish Town Hospital Treatment Unit	0	36	0	36	0	0	0
E&J Medical Center Treatment Unit	0	20	0	19	0	1	0
TOTAL	0	1033	0	1020	0	13	0

Home-Base Care of COVID-19 Cases

County	New Admissions	Currently in Admissions	No. Followed-up (In-person/Phone)	Cumulative Admissions	New Recoveries	Cumulative Recoveries	Referrals to TU	Cumulative Referrals to TU	New Death	Cumulative Deaths
Montserrat	0	10	10	179	0	166	0	5	0	0
Grand Cape Mount				0						
Nimba				0						
Margibi				0						
Bong				0						
Total:	0	10	10	179	0	166	0	5	0	0

Laboratory Samples Evaluated – 20 February 2021

County	Sample Evaluated	New Positive	Repeat Positive	Initial Negative	Repeat Test Negative	Pending Lab Result
Bong	3	0	0	2	0	1
Grand Bassa	1	0	0	1	0	0
Grand Cape Mount	11	0	0	10	0	1
Margibi	26	0	0	20	0	6
Montserrado	340	7	0	275	0	58
Nimba	4	0	0	3	0	1
TOTAL	385	7	0	311	0	67
 						
Outgoing Traveler	241	5	0	201	0	35
Incoming Traveler	138	2	0	104	0	32
Voluntary	6	0	0	6	0	0

Summary of COVID-19 Daily PoE in Response Counties – Feb. 20

Date of travel	Type of PoE	Point of Entry Name	Type of conveyance	# of Travelers Arrival	# of Travelers departure	# of travelers with elevated temp	Total Travelers screened		Total Passengers tested on Arrival	Total Foreign diplomat Exempted	# of Children under 5 years not tested	Passengers staying less than 5 days exempted	Total passports collected	Total # of Travelers	
							Male	Female							
20-Feb	Airport		Air Morac	0	0	0	0	0	0	0	0	0	0	0	
			Brussels	0	0	0	0	0	0	0	0	0	0	0	0
			AWA	0	0	0	0	0	0	0	0	0	0	0	0
			Air France	17	35	0	37	15	13	1	1	2	0	52	
			Air Cote D'Ivoire	0	28	0	19	9	-9	6	3	0	0	28	
			DHL	0	0	0	0	0	0	0	0	0	0	0	
			Kenya	19	64	0	50	33	18	0	1	0	1	83	
			Asky	74	0	0	60	14	66	3	2	3	1	74	
			Others	0	0	0	0	0	0	0	0	0	0	0	
	James Spriggs Payne Airport		0	0	0	0	0	0	0	0	0	0			
	Bo Water Side	Land	0	0	0	0	0	0	0	0	0	0			
		Buchanan	Vessel	22	22	0	0	0	0	0	0	0	44		
Seaport	Freeport of Monrovia	Vessel	0	0	0	44	0	0	0	0	0	44			
Total:				132	149	0	210	71	88	10	7	5	2	281	

Summary of COVID-19 Contact Tracing in Response Counties

County	New Contacts Line listed	Cumulative Contacts	No. of Health Care Workers as Contacts	Cumulative no. of Health Care Workers as contacts	Contacts became a case	Cumulative contacts that became a case	Contacts Completed 14 Days	Cumulative Contacts Completing 14 Days	Contacts Under Follow-up	Contacts lost to Follow-up
Montserrado	0	5490	0	508	0	189	23	5395	16	3
Margibi	0	480	0	125	0	42	0	470	58	0
Grand Bassa	0	457	0	140	0	51	0	410	0	0
Sinoe	0	191	0	30	0	1	0	191	0	0
Lofa	0	758	0	103	0	34	0	726	0	0
Nimba	0	613	0	53	0	25	0	550	0	0
Bong	0	302	0	70	0	28	0	300	2	0
Gbarpolu	0	87	0	13	0	8	0	87	0	0
Grand Cape Mount	0	49	0	3	0	4	0	51	2	0
RiverGee	0	123	0	13	0	30	0	123	0	0
Maryland	0	208	0	28	0	19	0	136	0	0
Bomi	0	180	0	17	0	15	0	177	0	0
Rivercess	0	102	0	55	0	0	0	88	0	0
Grand Kru	0	333	0	131	0	17	0	330	0	0
Grand Gedeh	0	163	0	49	0	6	0	125	0	0
National	0	9536	0	1338	0	469	23	9159	78	3

Thank you for Listening